

EAST L.A. BLDG. DIST. NO. 6

PROFILE ALIGNMENT AND GRADE OF P.C. 4934
 SANITARY SEWERS PAGE 1
 TO BE CONSTRUCTED IN

GAYHART STREET 26,550

PRIVATE CONTRACT NO. 4934

W.S. 36

1 SHEET, 2 PAGES

SCALE: 1" = 40' OCTOBER, 1958

PREPARED IN THE OFFICES OF

CENTRAL MANUFACTURING DISTRICT, INC.

By Arthur H. Cook

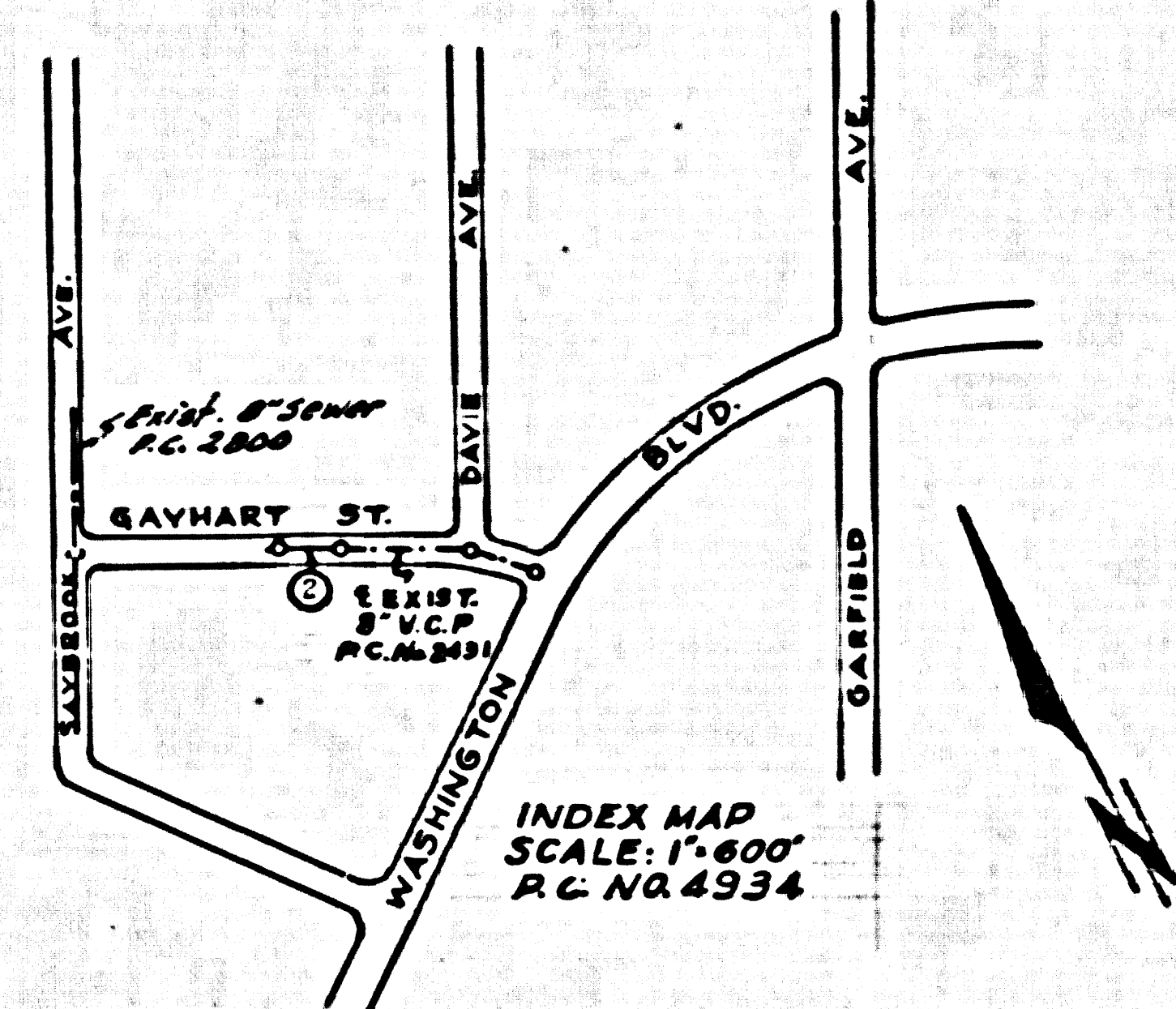
REG. C. E. NO. 1127

FOR LEGEND SEE PLAN NO. S-A-64

- NOTES
1. PROVIDE STAKES ON THE PROPERTY LINE OR PROPERTY LINES PRODUCED AT RIGHT ANGLES TO THE SEWER LINE AT THE CENTER LINE OF EACH MANHOLE.
 2. NO REPRESENTATIVE OF THE COUNTY ENGINEER WILL SURVEY OR LAY OUT ANY PORTION OF THE WORK.
 3. THE OWNER OR HIS AUTHORIZED REPRESENTATIVE SHALL FURNISH THE COUNTY ENGINEER WITH GRADE SHEETS AND STATIONING FOR ALL HOUSE LAY-OUTS AND Y BRANCHES AND SHALL PROVIDE STAKES FOR THEM AT THEIR PROPER LOCATIONS WITH STATIONING PLAINLY MARKED. ANY CHANGE IN LOCATION SHALL BE REQUESTED IN WRITING BY THE OWNER OR HIS REPRESENTATIVE.
 4. THE PRIVATE ENGINEER SHALL FURNISH THE HOUSE LAY-OUT SHEETS AT THE PROPERTY LINE BELOW THE TOP OF CURB ELEVATION FOR EACH HOUSE LATERAL ON THE GRADE SHEET.
 5. NO REVISIONS SHALL BE MADE IN THESE PLANS WITHOUT THE APPROVAL OF THE COUNTY ENGINEER.
 6. USE STANDARD MANHOLE FRAMES AND COVERS, S-117, ~~UNLESS OTHERWISE SPECIFIED.~~
 7. USE STANDARD STRENGTH PIPE ~~UNLESS OTHERWISE SPECIFIED.~~
 8. USE CEMENT MORTAR OR "WEDGE-LOCK" OR "SPED SEAL" FOR ALL V.C.P. JOINTS PER SPECS. SECS. 56 & 61.
 9. RESURFACE ALL TRENCH WITHIN PAVED AREA TO MEET L.A. COUNTY ROAD DEPT. OR CALIF. STATE HIGHWAY REQUIREMENTS IN ACCORDANCE WITH PERMITS.
 10. SHOW CLEAR FOUR FEET OF SEWER AT POINTS OF INTERFERENCE WITH POLES, CASE IN, S-172.
 11. ~~UNLESS OTHERWISE SPECIFIED, ALL STRUCTURES SHALL BE CONSTRUCTED PER SPECS. S-114.~~
 12. ALL STRUCTURES SHALL BE BRICK SEWER STRUCTURES, S-114, ~~UNLESS OTHERWISE SPECIFIED.~~
 13. FOR ALLOWABLE LEAKAGE TEST USE FORMULA NO. 8, SPECS. SEC. 54.
 14. ~~UNLESS OTHERWISE SPECIFIED, ALL STRUCTURES SHALL BE CONSTRUCTED PER SPECS. S-114.~~
 15. THE CONTRACTOR SHALL NOTIFY THE CONSTRUCTION & STORM DRAIN DIVISION BY TELEPHONE, HANDBOOK 9-67, EXT. 361, AT LEAST TWENTY-FOUR HOURS BEFORE STARTING ANY WORK UNDER THIS CONTRACT.

B.M. 513224 Elev. 160.729
 Washington Blvd. 153 Ft. S. of E Gayhart St.
 Brass Cap Man. on E. curb at B.C.

NO CHARGE
 FOR CONNECTIONS
L. Curtis 11-28-58



NOTES

GRADE TO WHICH THIS IMPROVEMENT IS TO BE CONSTRUCTED AND SHOWN ON PLANS AND PROFILES, BEING POINTS FOR TOP OF CURB, CENTER LINE OF STREETS, OR CENTER LINE OF ALLEYS ARE SHOWN BY CIRCLES ON PROFILES. AT ALL POINTS BETWEEN INTERMEDIATE POINTS THE GRADE SHALL BE ESTABLISHED SO AS TO CONFORM TO A STRAIGHT LINE DRAWN BETWEEN SAID DESIGNATED POINTS.

SEWERAGE AND THE 1957 ABOVE U.S.C. & G.S. SEA LEVEL DATUM OF 1929.

THE SEWERAGE AND THE DATA HEREON ARE HEREBY MADE A PART OF THE SPECIFICATIONS.

WORK SHALL BE CONSTRUCTED ACCORDING TO SPECIFICATIONS ON FILE IN THE OFFICE OF THE COUNTY ENGINEER AND SHALL BE PROSECUTED ONLY IN THE PRESENCE OF THE COUNTY ENGINEER.

BEFORE WORK CAN BE STARTED, THE CONTRACTOR MUST OBTAIN A PERMIT TO EXCAVATE IN COUNTY STREETS FROM THE L.A. COUNTY ROAD DEPT., DISTRICT OFFICE NO. 45, AND MAKE A DEPOSIT WITH THE COUNTY ENGINEER, ROOM 324 PAM AMERICAN BUILDING, 238 SO. BROADWAY SUBJECT TO COVER THE COST OF CONSTRUCTION INSPECTION AND SPECIFIC PLANS.

APPROVAL OF THIS PLAN BY THE COUNTY OF LOS ANGELES DOES NOT CONSTITUTE A REPRESENTATION AS TO THE ACCURACY OF THE LOCATION OR THE EXISTENCE OR NON-EXISTENCE OF ANY UNDERGROUND UTILITY PIPE, OR STRUCTURE WITHIN THE LIMITS OF THE PROJECT. THIS NOTE APPLIES TO ALL PAGES.

IF WORK IS TO BE DONE IN A STATE HIGHWAY, A PERMIT MUST BE OBTAINED FROM THE STATE OF CALIFORNIA, DIVISION OF HIGHWAYS, 128 SOUTH SPRING STREET.

COUNTY OF LOS ANGELES, CALIFORNIA

APPROVED, JOHN A. LAMPS, COUNTY ENGINEER

APPROVED, A. M. BAWN, CHIEF ENGINEER

BY John A. Lamps SANITATION ENGINEER

BY A. M. Bawn CHIEF ENGINEER

CHECKED BY W. W. Wick 11-28-58

OFFICE OF COUNTY ENGINEER, REG. C. E. NO. 3505

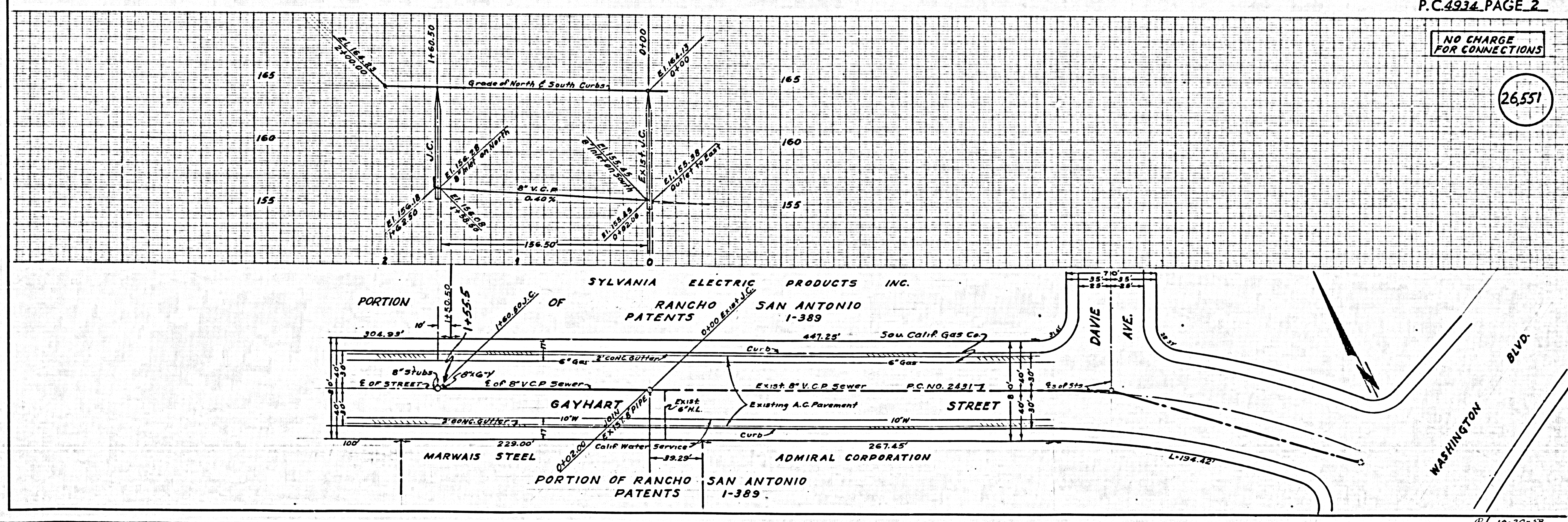
APPROVED, INDUSTRIAL WASTE DIVISION

BY Bernard D. Valachy 10/20/58

P.C. 4934 PAGE 2

NO CHARGE FOR CONNECTIONS

26,551



10-20-58