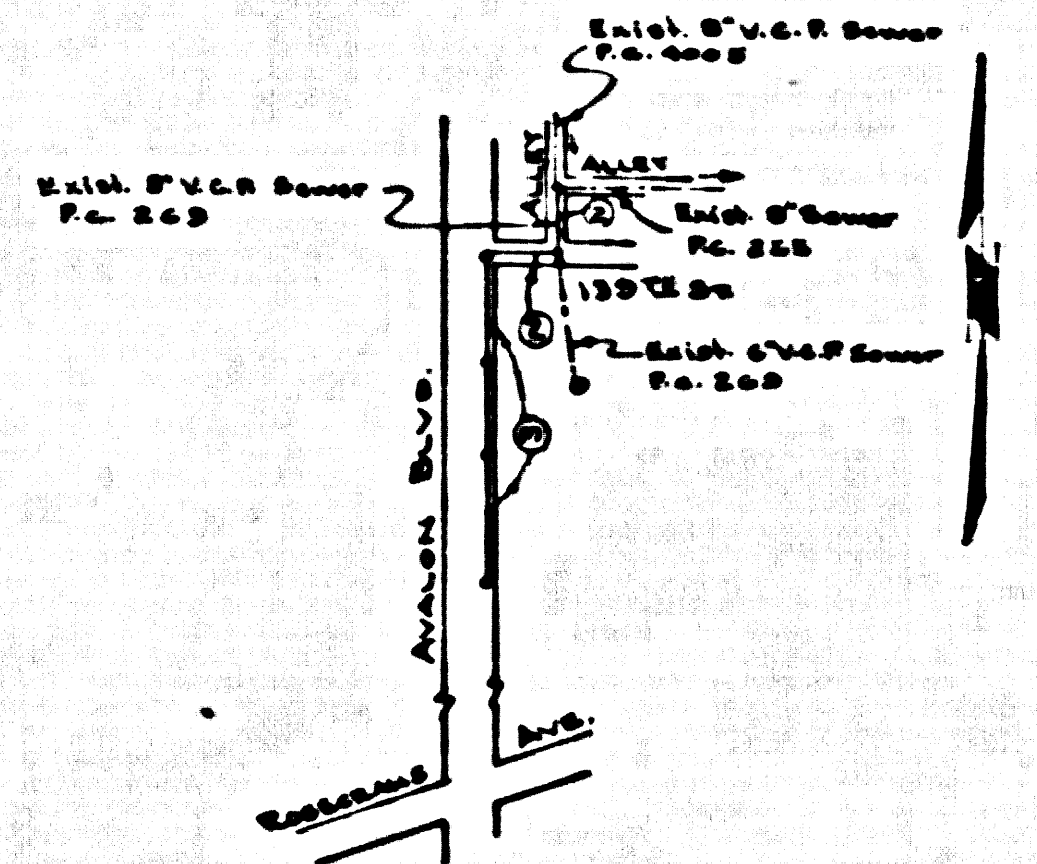


D.M. 57 1081 Elev. 118.965 (1953)
 L & T in 844' east of Wily Gas Pump Island
 to Union Oil Gas Station #1421G Avalon Blvd.
 210' N. of E. Rosecrans Ave. & 258' E. of Avalon Blvd.



INDEX MAP
 Scale 1"=600'
 P.C. 4936

LENNOX BLDG. DIST. NO. 7

- NOTE:
 PROVIDE STAKES ON THE PROPERTY LINE OR PROPERTY LINES PRODUCED AT RIGHT ANGLES TO THE SEWER LINE AT THE CENTER LINE OF EACH MANHOLE.
- NO REPRESENTATIVE OF THE COUNTY ENGINEER WILL SURVEY OR LAYOUT ANY PORTION OF THE WORK.
- THE OWNER OR HIS AUTHORIZED REPRESENTATIVE SHALL FURNISH THE COUNTY ENGINEER WITH GRADE SHEETS AND STATION FOR ALL HOUSE LATERALS AND V BRANCHES AND SHALL PROVIDE STAKE FOR THEM AT THEIR PROPER LOCATIONS WITH STATIONING AND PLANNED MARKERS. ANY CHANGE IN LOCATION SHALL BE REQUESTED IN WRITING BY THE OWNER OR HIS REPRESENTATIVE.
- NO REVISIONS SHALL BE MADE IN THESE PLANS WITHOUT THE APPROVAL OF THE COUNTY ENGINEER.
- USE STANDARD MANHOLE FRAMES AND COVERS, S-A-117, EXCEPT AS NOTED.
 - USE STANDARD STRUCTURE PIPE EXCEPT AS NOTED.
 - USE CHAMFER HOUSES, "B" FLEED-SEAL, OR "WEDGE-LOCK" FOR ALL VITRIFIED CLAY PIPE JOINTS PER S.P.C. & SEC. 34 & 46.
 - BRIDGE ALL TRENCHES WITHIN PAVED AREA TO MEET L.A. COUNTY ROAD DEPT. OR CALIF. STATE HIGHWAY DEPT. REQUIREMENTS IN ACCORDANCE WITH PERMITS.
 - ENCASE FOUR FEET OF SEWER AT POINTS OF INTERFERENCE WITH POLES, CABLES, ETC., S-A-176.
 - HOUSE LATERALS TO BE CONSTRUCTED WITH SEWER AT PROPERTY LINE. SEE SHOW CURB GRADE EXCEPT AS NOTED.
 - ALL STRUCTURES SHALL BE BRICK SEWER STRUCTURES, S-A-104, EXCEPT AS NOTED.
 - FOR ALLOWABLE LEAKAGE TEST USE FORMULA NO. 1, S.P.C. & SEC. 54.
 - MANHOLE TOPS IN UNPAVED RIGHTS-OF-WAY TO BE 6" ABOVE FINISHED GRADE.
- 10 THE CONTRACTOR SHALL NOTIFY THE CONSTRUCTION & STORM DRAIN DIVISION BY TELEPHONE, MADISON 5-4747, SIX 368, AT LEAST 24 HOURS BEFORE STARTING ANY WORK UNDER THIS CONTRACT.

PROFILE ALIGNMENT AND GRADE OF P.C. 4936
 SANITARY SEWERS PAGE 1

AVALON BLVD. (26688)

PRIVATE CONTRACT NO. 4936

W.S. 26
 2 SHEETS, 3 PAGES

SCALE: VERT. 1"=6' HORIZ. 1"=40' OCT. 1958

PREPARED IN THE OFFICES OF
 OLSON SURVEYING SERVICE

By *James H. Olson*
 REG. C. E. NO. 26688

FOR LEGEND SEE PLAN NO. S-A-64

NOTE:
 GRADES TO WHICH THIS IMPROVEMENT IS TO BE CONSTRUCTED ARE SHOWN ON PLANS AND PROFILE. GRADE POINTS FOR TOP OF CURB, CENTER LINE OF STREET, OR CENTER LINE OF ALLEY ARE SHOWN BY CIRCLES ON PROFILE. AT ALL POINTS BETWEEN DESIGNATED POINTS THE GRADE SHALL BE ESTABLISHED SO AS TO CONFORM TO A STRAIGHT LINE BETWEEN SAID DESIGNATED POINTS.

ELEVATIONS ARE IN FEET ABOVE U.S.C. & G.S. S.E.A. LEVEL DATUM OF 1929.

THE SEWERING AND THE DATA HEREON ARE HEREBY MADE A PART OF THE SPECIFICATIONS.

WORK SHALL BE CONSTRUCTED ACCORDING TO SPECIFICATIONS ON FILE IN THE OFFICE OF THE COUNTY ENGINEER AND SHALL BE INSPECTED ONLY BY THE OFFICE OF THE COUNTY ENGINEER.

BEFORE WORK CAN BE STARTED, THE CONTRACTOR MUST OBTAIN A PERMIT TO EXCAVATE IN COUNTY STREETS FROM THE L.A. COUNTY ROAD DEPT., DISTRICT #3, AND MAKE A DEPOSIT WITH THE COUNTY ENGINEER, ROOM 224 SAN AMERICAN BUILDING, 224 S. HOPE STREET, LOS ANGELES, CALIF. TO COVER THE COST OF CONSTRUCTION INSPECTION AND RECORD PLANS.

APPROVAL OF THIS PLAN BY THE COUNTY OF LOS ANGELES DOES NOT CONSTITUTE A REPRESENTATION AS TO THE ACCURACY OF THE LOCATION OF OR THE EXISTENCE OR NON-EXISTENCE OF ANY UNDERGROUND UTILITY PIPE, OR STRUCTURE WITHIN THE LIMITS OF THIS PROJECT. THE NOTE APPLIES TO ALL PAGES.

IF WORK IS TO BE DONE IN A STATE HIGHWAY, A PERMIT MUST BE OBTAINED FROM THE STATE OF CALIFORNIA, DIVISION OF HIGHWAYS, 120 SOUTH SPRING STREET.

COUNTY OF LOS ANGELES, CALIFORNIA

APPROVED, JOHN A. LAMBE, COUNTY ENGINEER APPROVED, A. M. RAWN, CHIEF ENGINEER

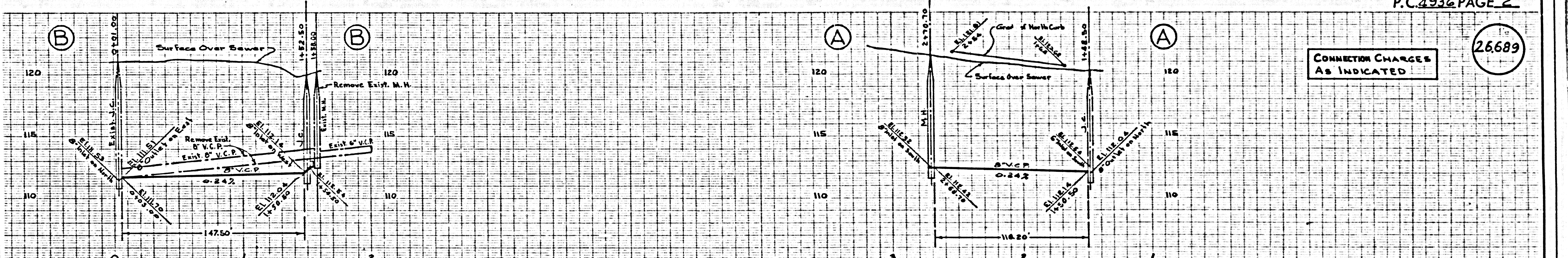
By *John A. Lambe* By *A. M. Rawn*
 COUNTY ENGINEER OFFICE ENGINEER

CHECKED BY *Eric O. Williams*
 OFFICE OF COUNTY ENGINEER, REG. C. E. NO. 26688

Approved By *Baronard J. Valachi* 12/4/58
 Industrial Waste Division

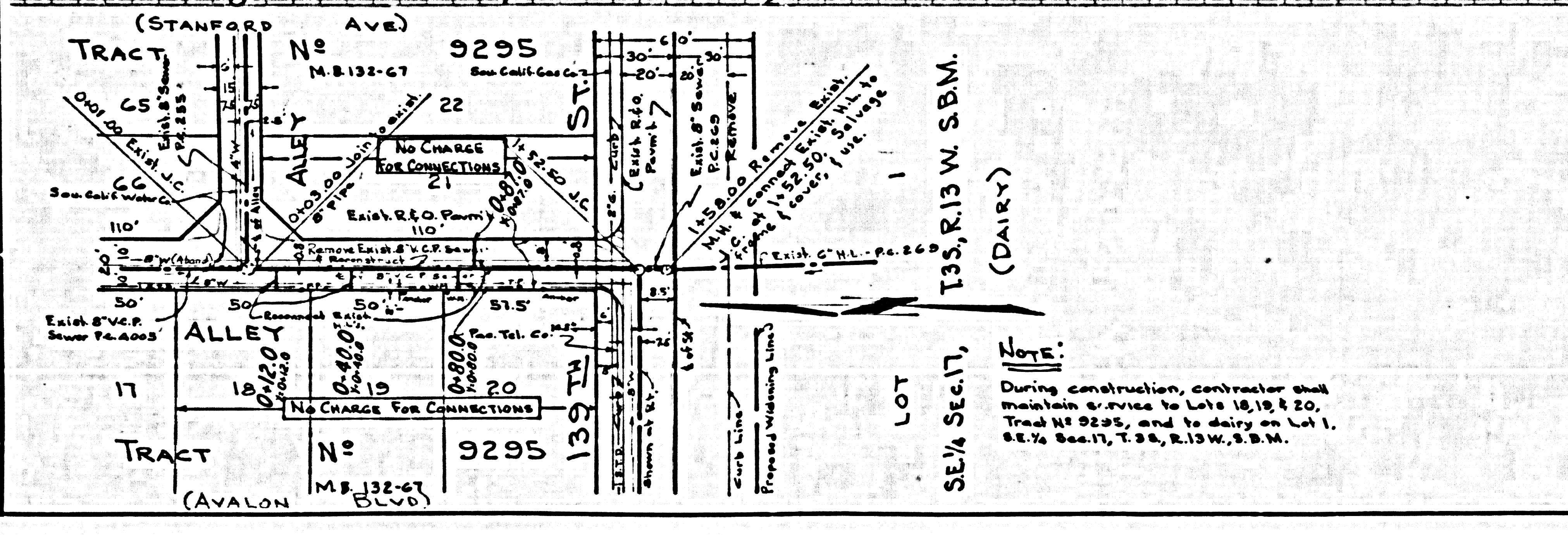
CONNECTION CHARGES
 AS INDICATED
L. Curtis 11-5-58

P.C. 4936 PAGE 2

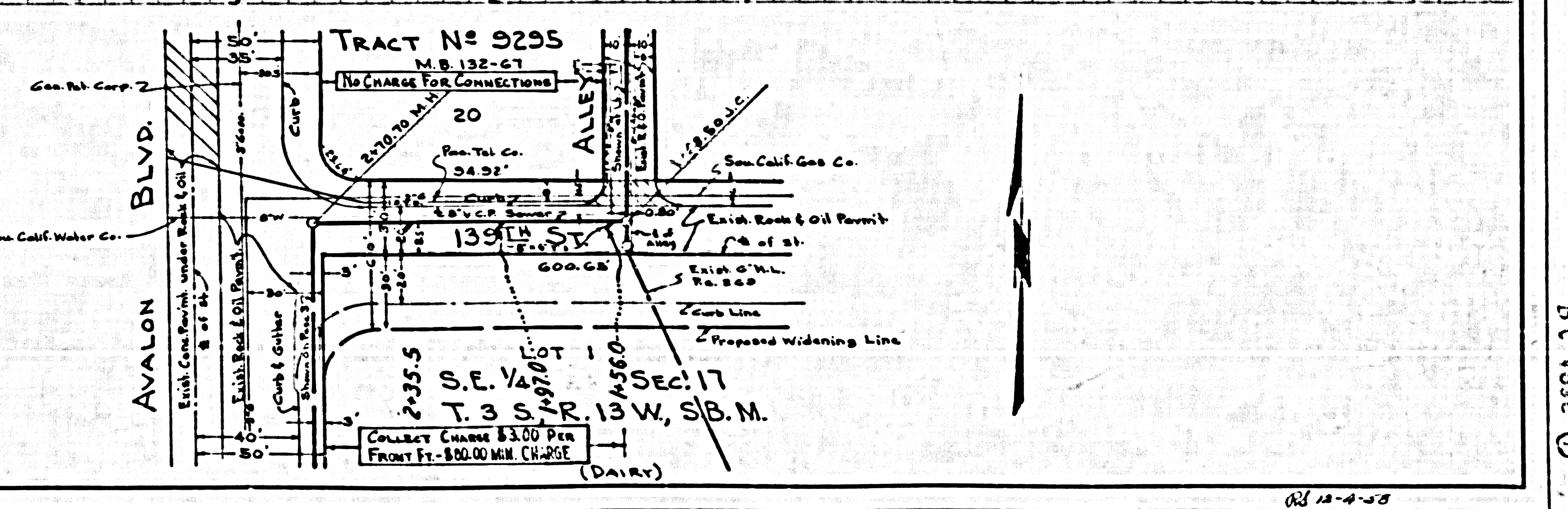


CONNECTION CHARGES
 AS INDICATED

(26688)



NOTE:
 During construction, contractor shall maintain service to Lots 18, 19 & 20, Tract No. 9295, and to dairy on Lot 1, S.E. 1/4 Sec. 17, T. 3 S., R. 13 W., S.B.M.

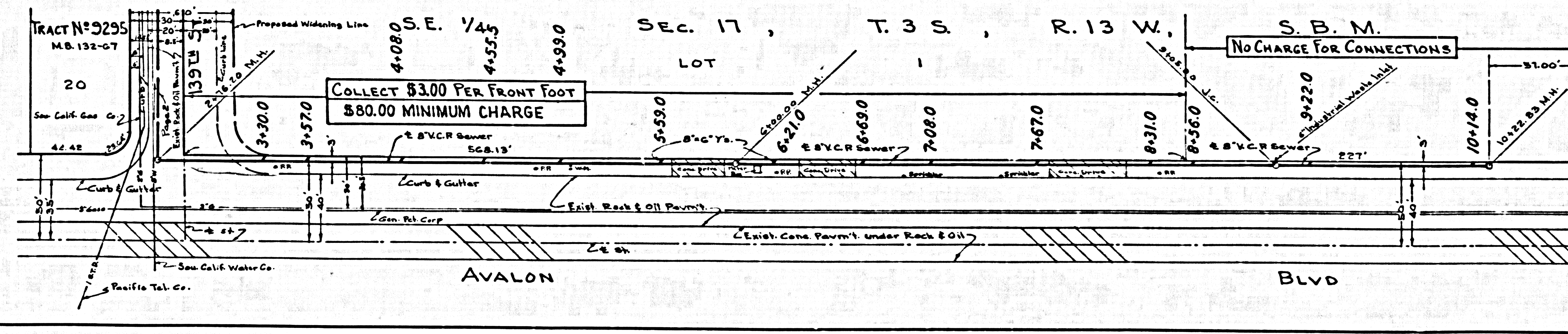
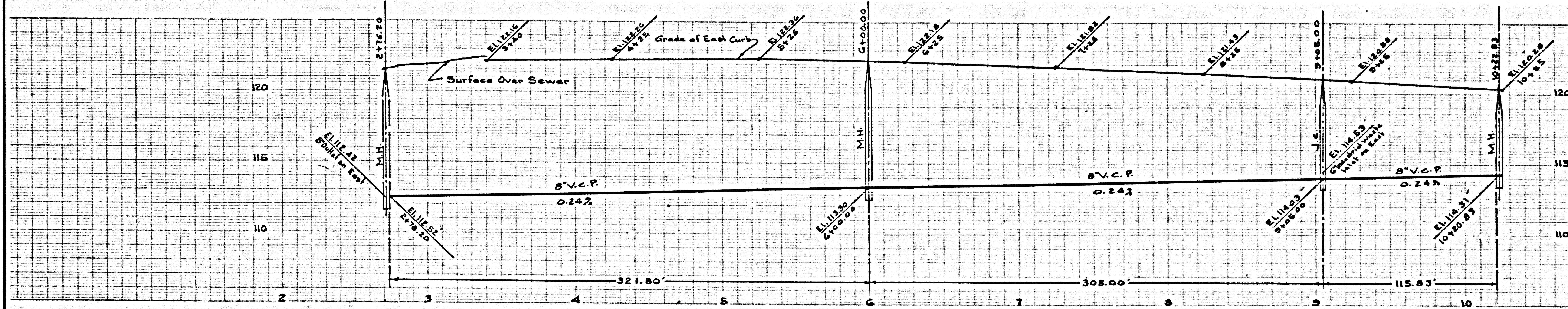


TRACT No. 9295
 M.B. 132-67
 No CHARGE FOR CONNECTIONS
 20
 139' CH. ST.
 2-35.5 S.E. 1/4 Sec. 17
 T. 3 S., R. 13 W., S.B.M.
 COLLECTOR CHARGE \$3.00 PER FRONT FT. - \$20.00 MIN. (CH. 256)

12-4-58

26,690

COLLECT CHARGES AS INDICATED



P.C. 4936