

B.M. 2977 Elev. 120.855 (1955)  
 L.A. Dept. of Public Works 571  
 Brass Cap Man. in case 2 E. of E. Cor. of Avalon Blvd.  
 at ab. cor. N.E. Cor. 138th St. & Avalon Blvd. Marked '46-W'

# LENNOX BLDG. DIST. NO. 7

PROFILE ALIGNMENT AND GRADE OF **P.C. 4939**  
**SANITARY SEWERS PAGE 1**  
 TO BE CONSTRUCTED IN

**ALLEY WEST OF STANFORD AVE.**  
**PRIVATE CONTRACT NO. 4939**

W.S. 26  
 1 SHEET, 2 PAGES  
 SCALE: VERT. 1" = 4' HORIZ. 1" = 10' OCT 1958  
 PREPARED IN THE OFFICES OF

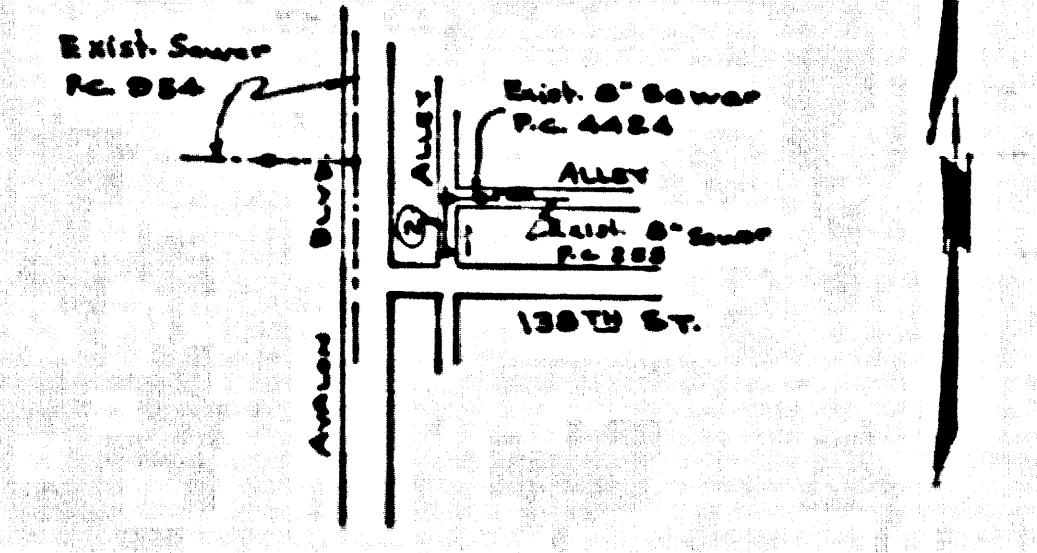
**OLSON SURVEYING SERVICE**

By: *[Signature]*  
 REG. C. E. NO. 2666

FOR LEGEND SEE PLAN NO. S-A-64

NOTE:  
 GRADES TO WHICH THIS IMPROVEMENT IS TO BE CONSTRUCTED ARE SHOWN ON PLANS AND PROFILES. GRADE POINTS FOR TOP OF CURBS, CENTER LINE OF ALLEYS ARE SHOWN BY CHAINS OR PROFILES. AT ALL POINTS BETWEEN DESIGNATED POINTS THE GRADE SHALL BE ESTABLISHED SO AS TO CONFORM TO A STRAIGHT LINE DRAWN BETWEEN SAID DESIGNATED POINTS.  
 ELEVATIONS ARE IN FEET ABOVE M.S.C. & S.E. SEA LEVEL DATUM OF 1929.  
 THIS DRAWING AND THE DATA HEREON ARE HEREBY MADE A PART OF THE SPECIFICATIONS.  
 WORK SHALL BE CONSTRUCTED ACCORDING TO SPECIFICATIONS ON FILE IN THE OFFICE OF THE COUNTY ENGINEER AND SHALL BE PROSECUTED ONLY IN THE PRESENCE OF THE COUNTY ENGINEER.  
 BEFORE WORK CAN BE STARTED, THE CONTRACTOR MUST OBTAIN A PERMIT TO EXCAVATE IN COUNTY STREETS FROM THE COUNTY ROAD DEPT., DISTRICT OFFICE NO. 3, AND MAKE A DEPOSIT WITH THE COUNTY ENGINEER, ROOM 24 PAN AMERICAN BUILDING, 755 SO. BROADWAY, SUFFICIENT TO COVER THE COST OF CONSTRUCTION INSPECTION AND RECORD PLANS.  
 APPROVAL OF THIS PLAN BY THE COUNTY OF LOS ANGELES DOES NOT CONSTITUTE A REPRESENTATION AS TO THE ACCURACY OF THE LOCATION OR OF THE EXISTENCE OR NON-EXISTENCE OF ANY UNDERGROUND UTILITY PIPES OR STRUCTURES WITHIN THE LIMITS OF THIS PROJECT. THIS NOTE APPLIES TO ALL PAGES.  
 IF WORK IS TO BE DONE IN A STATE HIGHWAY, A PERMIT MUST BE OBTAINED FROM THE STATE OF CALIFORNIA, DIVISION OF HIGHWAYS, 138 SOUTH SPRING STREET.

- NOTES
1. PROVIDE STAKES ON THE PROPERTY LINE OR PROPERTY LINES PRODUCED AT RIGHT ANGLES TO THE SEWER LINE AT THE "ENTER" LINE OF EACH MANHOLE.
  2. NO REPRESENTATIVE OF THE COUNTY ENGINEER WILL SURVEY OR LAY OUT ANY PORTION OF THE WORK.
  3. THE OWNER OR HIS AUTHORIZED REPRESENTATIVE SHALL FURNISH THE COUNTY ENGINEER WITH GRADE SHEETS AND STATIONING FOR ALL HOUSE LATERALS AND Y BRANCHES AND SHALL PROVIDE STAKES FOR THEM AT THEIR PROPER LOCATIONS WITH STATIONING PLAINLY MARKED. ANY CHANGE IN LOCATION SHALL BE SECURED BY WRITING BY THE OWNER OR HIS REPRESENTATIVE.
  4. THE PRIVATE ENGINEER SHALL FURNISH THE HOUSE LATERAL WITHIN AT THE PROPERTY LINE BELOW GRADE OF 2' OF ALLEY FOR EACH HOUSE LATERAL ON THE GRADE SHEET.
  5. NO REVISIONS SHALL BE MADE IN THESE PLANS WITHOUT THE APPROVAL OF THE COUNTY ENGINEER.
  6. USE STANDARD MANHOLE FRAMES AND COVERS, S-117.
  7. USE STANDARD STRENGTH PIPE.
  8. USE CEMENT MORTAR OR "WEDGE-LOCK" OR "SPED-SEAL" FOR ALL V.C.P. JOINTS PER SPECS. SECL. 31 & 41.
  9. RESURFACE ALL TRENCH WITHIN PAVED AREA TO MEET L.A. COUNTY ROAD DEPT. OR CALIF. STATE HIGHWAY REQUIREMENTS IN ACCORDANCE WITH PERMITS.
  10. INCREASE FOUR FEET OF SEWER AT POINTS OF INTERFERENCE WITH POLES, CASE NO. S-172.
  11. HOUSE LATERALS TO BE CONSTRUCTED WITH 1/2" RISE PER FOOT TO THE PROPERTY LINE.
  12. ALL STRUCTURES SHALL BE BRICK SEWER STRUCTURES, S-116.
  13. FOR ALLOWABLE LEAKAGE TEST USE FORMULA NO. 1 - SPECS. SEC. 31.
  14. THE CONTRACTOR SHALL NOTIFY THE CONSTRUCTION & STORM DRAIN DIVISION BY TELEPHONE, BARRISON 9-4747, EXT. 361, AT LEAST TWENTY-FOUR HOURS BEFORE STARTING ANY WORK UNDER THIS CONTRACT.



INDEX MAP  
 Scale 1" = 600'  
 P.C. 4939

No CHARGE FOR CONNECTIONS  
*L. Curtis 11-14-58*

COUNTY OF LOS ANGELES, CALIFORNIA

APPROVED, JOHN A. LAMBE, COUNTY ENGINEER  
 APPROVED, A. M. RAWNS, CHIEF ENGINEER

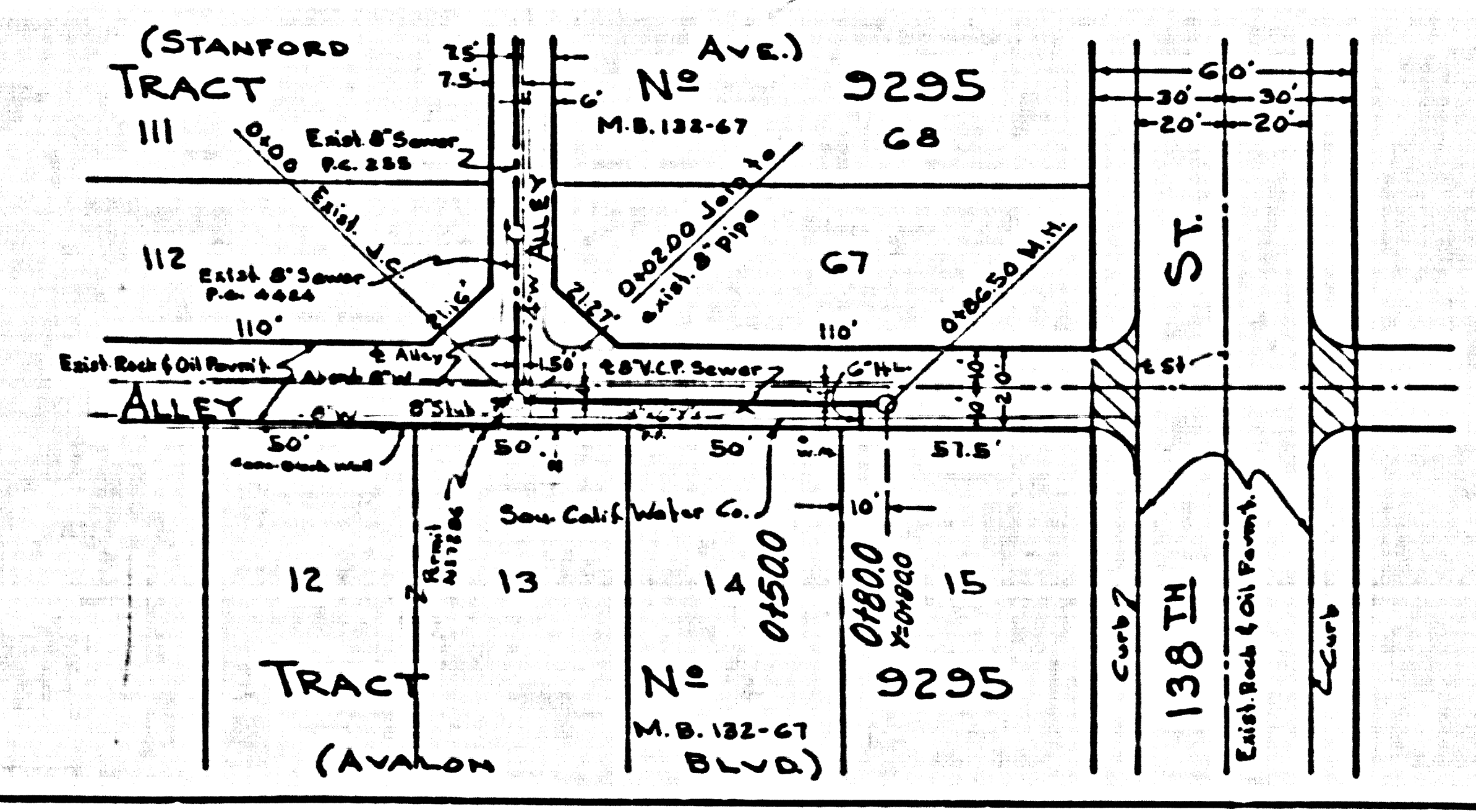
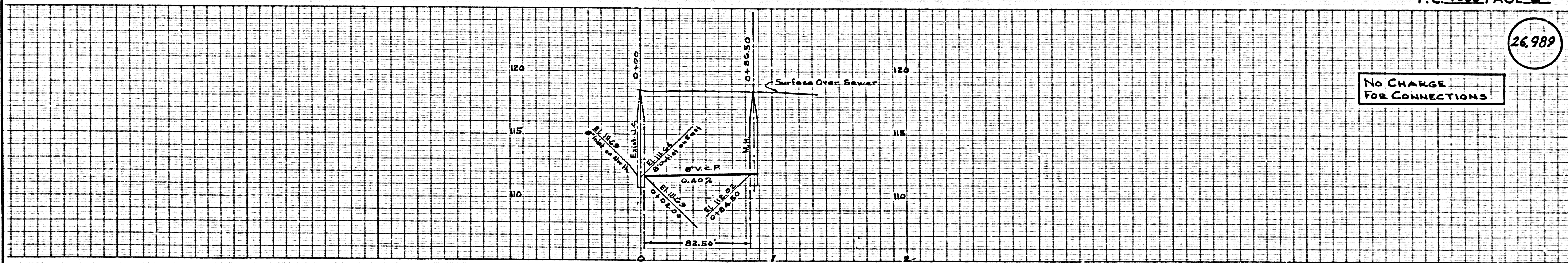
By: *[Signature]* SANITATION ENGINEER  
 By: *[Signature]* OFFICE ENGINEER

CHECKED BY: *[Signature]*  
 OFFICE OF COUNTY ENGINEER, REG. C. E. NO. 3226

P.C. 4939 PAGE 2

26,989

No CHARGE FOR CONNECTIONS



Rev 10-20-58