

31. 55' 1/2" Rev. 5' 1/2"  
 C.C.N. center of  
 North Hadwell @  
 N.W. Corner Meuna  
 Loc. Ave & Grand Ave.  
 San Dimas Quad.

**SAN DIMAS BLDG. DIST. NO. 10**

- NOTES:**
- PROVIDE STAKES ON THE PROPERTY LINE OR PROPERTY LINE PRODUCED AT RIGHT ANGLES TO THE SEWER LINE AT THE CENTER LINE OF EACH MANHOLE.
  - NO REPRESENTATIVE OF THE COUNTY ENGINEER WILL SURVEY OR LAYOUT ANY PORTION OF THE WORK.
  - THE OWNER OR HIS AUTHORIZED REPRESENTATIVE SHALL FURNISH THE COUNTY ENGINEER WITH GRADE SHEETS AND STATION FOR ALL HOUSE LATERALS AND Y BRANCHES AND SHALL PROVIDE STAKES FOR THESE AT THEIR PROPER LOCATIONS WITH STATIONING PLAINLY MARKED. ANY CHANGE IN LOCATION SHALL BE REQUESTED BY WRITING BY THE OWNER OR HIS REPRESENTATIVE.
  - NO REVISIONS SHALL BE MADE IN THESE PLANS WITHOUT THE APPROVAL OF THE COUNTY ENGINEER.
  - USE STANDARD MANHOLE FRAMES AND COVERS, S.A-117, EXCEPT AS NOTED.
  - USE STANDARD STRENGTH PIPE EXCEPT AS NOTED.
  - USE CAMBIE MORTAR FOR ALL "V" JOINTS IN 8" V.C.P. SPEC'S, SEC 20148.
  - RESURFACE ALL TERRACE WITHIN PAVED AREA TO MEET L. A. COUNTY ROAD DEPT., OR CALIF. STATE HIGHWAY DEPT. SPECIFICATIONS IN ACCORDANCE WITH PERMITS.
  - BRIDGE FOUR FEET OF SEWER AT POINTS OF INTERFERENCE WITH POLES, S.A-117E, C.S.S. 117.
  - HOUSE LATERALS TO BE CONSTRUCTED WITH INVERTS AT PROPERTY LINE 2 FEET BELOW CURB GRADE EXCEPT AS NOTED.
  - ALL STRUCTURES SHALL BE BUILT SEWER STRUCTURES, S.A-104, EXCEPT AS NOTED.
  - FOR ALLOWABLE SIZES USE FORMULA NO. 1, SPEC'S, SEC 24.
  - MANHOLE BOX IN UNIMPROVED HIGHWAY TO BE 6" MORE PROTRUSION GRASS.
  - The private Engineer is to furnish House Lateral Depth of the Property Line below the top of curb elevation for each house lateral on the grade sheet.

**NOTE:**  
 THE CONTRACTOR SHALL NOTIFY THE CONSTRUCTION AND STORM DRAIN DIVISION BY TELEPHONE, MADISON 9-4747, EXT. 302, AT LEAST 24 HOURS BEFORE STARTING ANY WORK UNDER THIS CONTRACT.

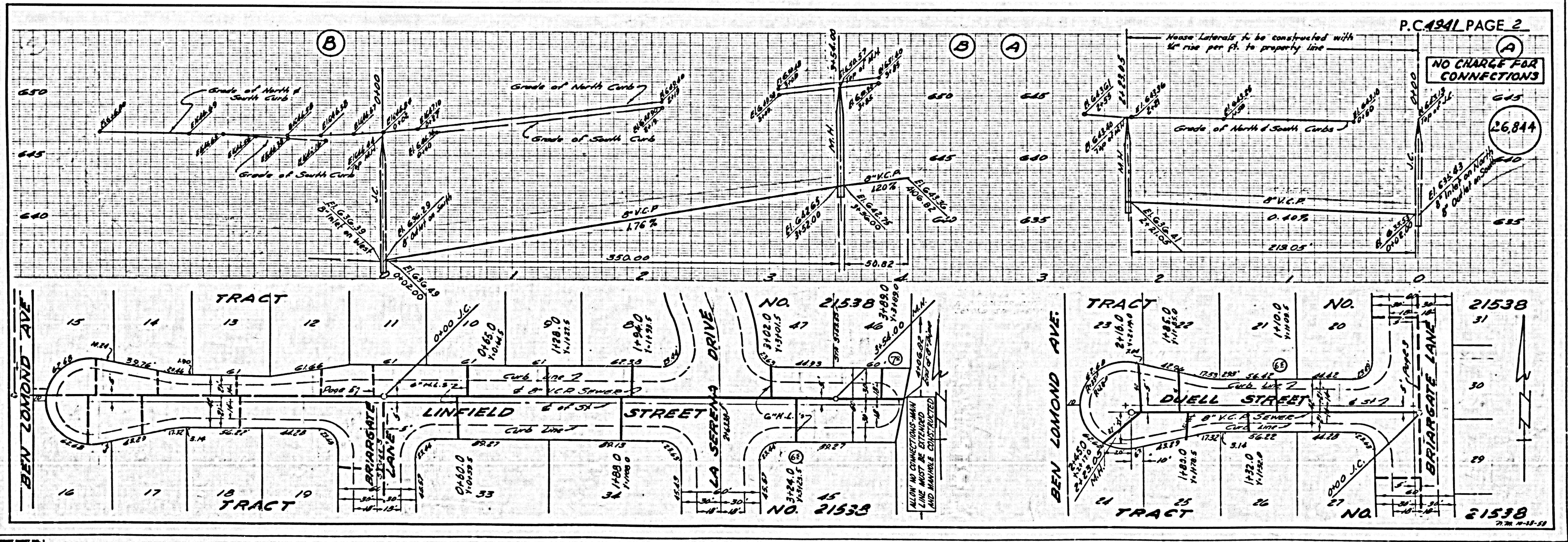
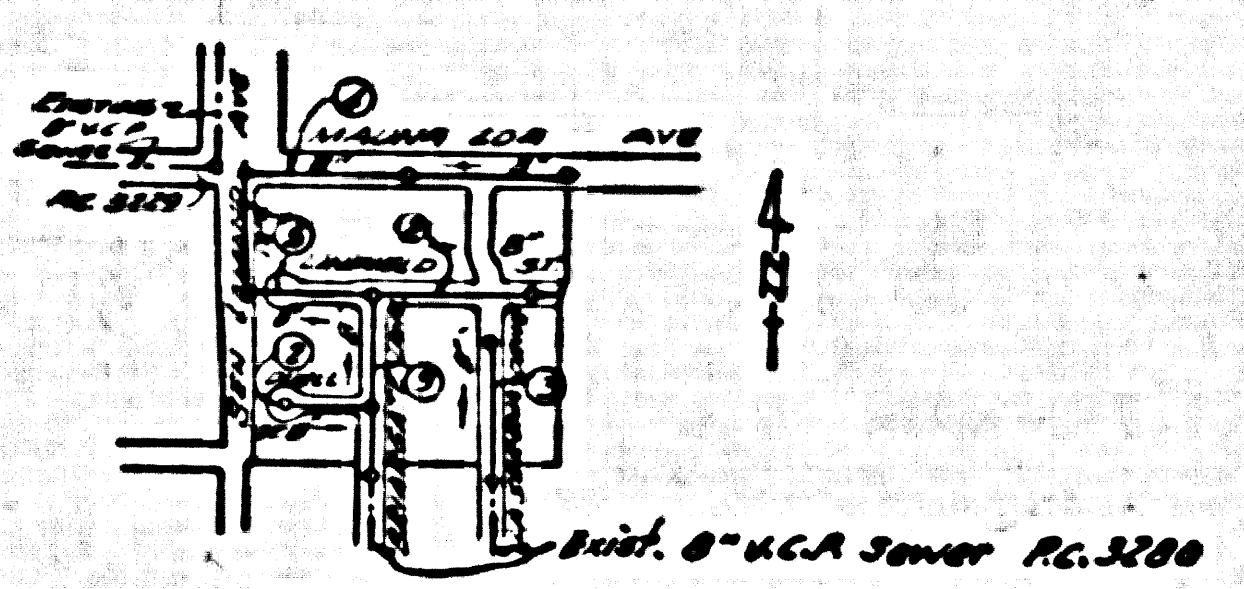
PROFILE ALIGNMENT AND GRADE OF **P.C. 4941**  
**SANITARY SEWERS** PAGE **L**  
 TO BE CONSTRUCTED IN  
**TRACT NO. 21538** (26,843)

**PRIVATE CONTRACT NO. 4941**  
 W.S. 47  
 3 SHEETS, 5 PAGES  
 SCALE: VERT. 1"=4' HORIZ. 1"=40' OCTOBER, 1958  
 PREPARED IN THE OFFICES OF  
**L. FREDERICK FRICK**  
 189 W. BARKLEY ST. COVINA, CALIF.  
 BY *L. Frederick Frick*  
 REG. C. E. NO. 7588  
 FOR LEGEND SEE PLAN NO. S-A-64

**NOTES:**  
 GRADES TO WHICH THIS IMPROVEMENT IS TO BE CONSTRUCTED ARE SHOWN ON PLANS AND PROFILES. GRADE POINTS FOR TOP OF CURB, CENTER LINE OF STREETS, OR CENTER LINE OF ALLEYS ARE SHOWN BY CIRCLES ON PLANS AT ALL POINTS BETWEEN ESTABLISHED POINTS THE GRADE SHALL BE ESTABLISHED SO AS TO CONFORM TO A STRAIGHT LINE BETWEEN SAID ESTABLISHED POINTS.  
 ELEVATIONS ARE IN FEET ABOVE M.S.L. OF SEA LEVEL. SEE SPEC'S, SECTION 20148.  
 THE DRAWING AND THE DATA HEREON ARE HEREBY MADE A PART OF THE SPECIFICATIONS.  
 WORK SHALL BE CONSTRUCTED ACCORDING TO SPECIFICATIONS ON FILE IN THE OFFICE OF THE COUNTY ENGINEER AND SHALL BE PROSECUTED ONLY IN THE PRESENCE OF THE COUNTY ENGINEER.  
 BEFORE WORK CAN BE STARTED, THE CONTRACTOR MUST OBTAIN A PERMIT TO EXCAVATE IN COUNTY STREETS FROM THE L. A. COUNTY ROAD DEPT., SPEC'S, SEC. 20148, AND MAKE A DEPOSIT WITH THE COUNTY ENGINEER ROOM 244 SAN ANTONIO BUILDING, 348 N. BROADWAY SUFFICIENT TO COVER THE COST OF CONSTRUCTION INSPECTION AND RECORD PLANS.  
 APPROVAL OF THE PLAN BY THE COUNTY OF LOS ANGELES DOES NOT CONSTITUTE A REPRESENTATION AS TO THE ACCURACY OF THE LOCATION OR THE EXISTENCE OR NON-EXISTENCE OF ANY UNDERGROUND UTILITY PIPE, OR STRUCTURE WITHIN THE LIMITS OF THE PROJECT. THIS NOTE APPLIES TO ALL PAGES.  
 IF WORK IS TO BE DONE IN A STATE HIGHWAY, A PERMIT MUST BE OBTAINED FROM THE STATE OF CALIFORNIA, DIVISION OF HIGHWAYS, 128 SOUTH SPRING STREET.

**COUNTY OF LOS ANGELES, CALIFORNIA**  
 APPROVED, JOHN A. LAMBE, COUNTY ENGINEER  
 APPROVED, A. M. RAWL, CHIEF ENGINEER  
 BY *L. Frederick Frick* (L. A. COUNTY ENGINEER)  
 BY *L. Frederick Frick* (CHIEF ENGINEER)  
 CHECKED BY *L. Frederick Frick* 11-6-58  
 OFFICE OF COUNTY ENGINEER, REG. C. E. NO. 2445

**COLLECT CHARGES AS INDICATED**  
*7777 C. Ginnis 11-6-58*



P.C. 4941 PAGE 2

NO CHARGE FOR CONNECTIONS

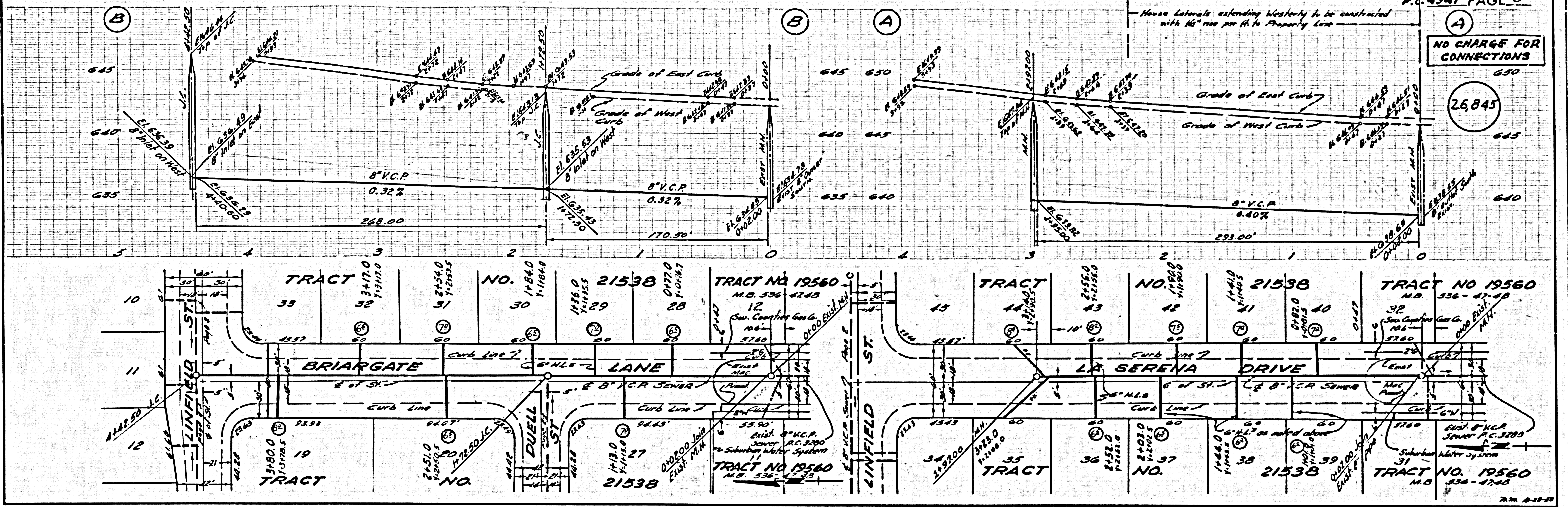
(26,844)

ALLOW NO CONNECTIONS MAIN LINE MUST BE OBTAINED AND MANHOLE CONSTRUCTED

7-27-58-11

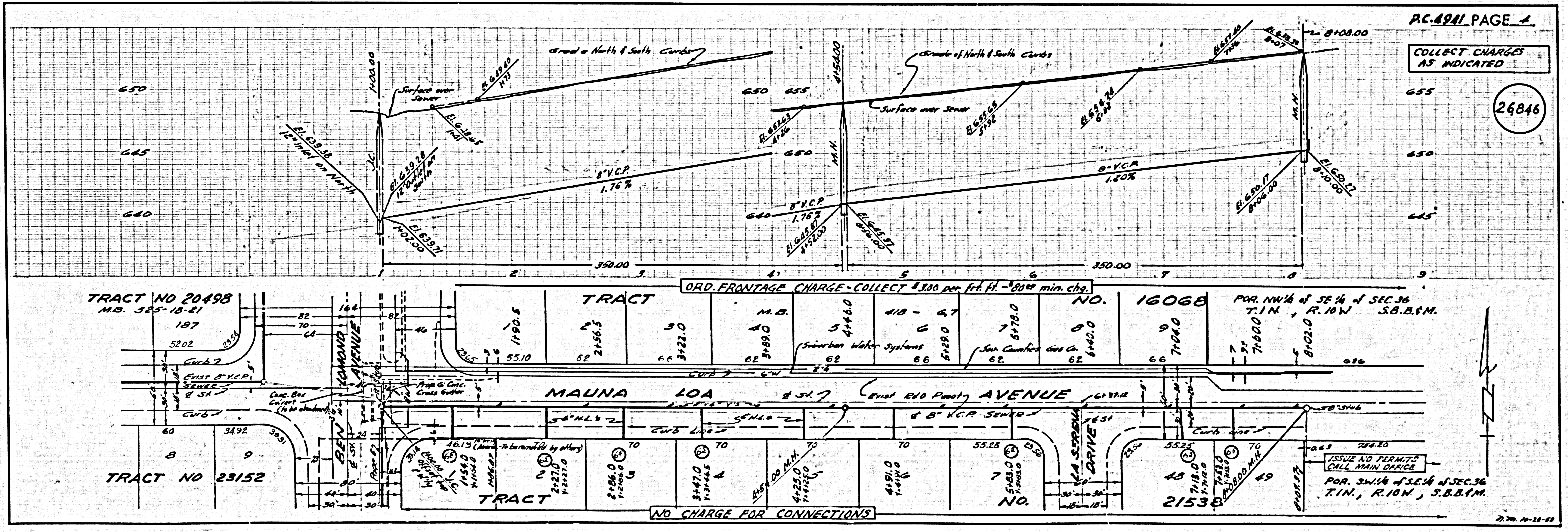
NO CHARGE FOR CONNECTIONS

26845



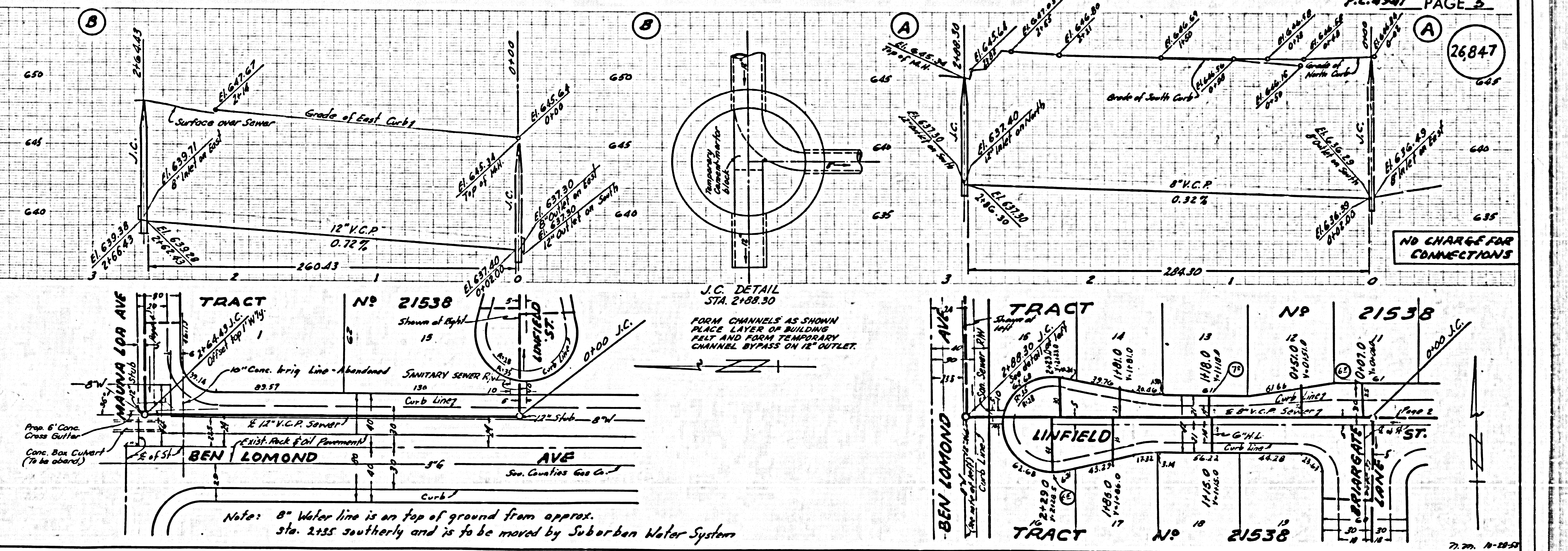
COLLECT CHARGES AS INDICATED

26846



ISSUE NO PERMITS CALL MAIN OFFICE FOR SW/4 of SE 1/4 of SEC. 36 T. 1 N., R. 10 W., S.B.B.M.

26847



NO CHARGE FOR CONNECTIONS

J.C. DETAIL  
STA. 2+88.30  
FORM CHANNELS AS SHOWN  
PLACE LAYER OF BUILDING  
FELT AND FORM TEMPORARY  
CHANNEL BYPASS ON 12" OUTLET.

Note: 8" Water line is on top of ground from approx. sta. 2+35 southerly and is to be moved by Suburban Water System