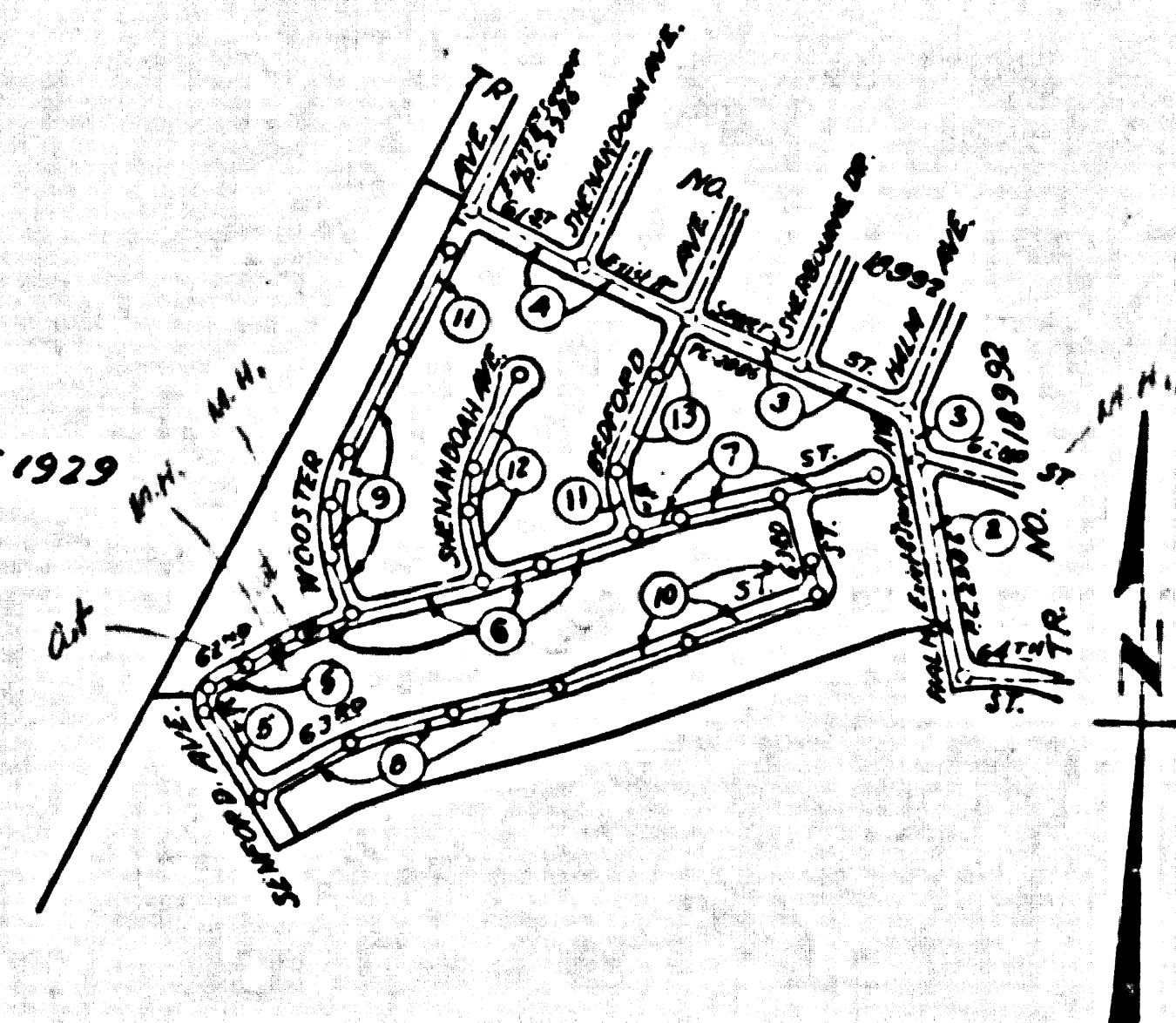


B.M.-L.G. 754-360 B.M.-A.M. Elev. 184.17 Bolt
 2' North 1st in Line 2' N. of N.W. Corner of
 N.E. Ramp off Houston Ave. to La Compa Blvd.
 L.A.I.F.B. 200-H (Elev. 183.745) Rd. Dept. Elev.

B.M. L.A.I. Company P.B. 263 Pg. 3. Elev. 125.35
 Chiswick Knob E. curb Corning Ave. N.E. Return
 6' 4" Street and Corning Ave.

NOTE:
 Old L.A. City Datum - Add 5.575 for Road Department
 Old L.A. City Datum - Add 5.775 for U.S.C. & G.S. Sea level Datum of 1929



INDEX MAP
 SCALE 1"=500'
 TRACT NO. 24252
 P.C. 4943

LENNOX BLDG. DIST. NO. 7

- NOTE:
 PROVIDE STAKES ON THE PROPERTY LINE OR PROPERTY LINES PRODUCED AT RIGHT ANGLES TO THE SEWER LINE AT THE CENTER LINE OF EACH MANHOLE.
 NO REPRESENTATIVE OF THE COUNTY ENGINEER WILL SURVEY OR LAYOUT ANY PORTION OF THE WORK.
 THE OWNER OR HIS AUTHORIZED REPRESENTATIVE SHALL FURNISH THE COUNTY ENGINEER WITH GRADE SHEETS AND STATION FOR ALL HOUSE LATERALS AND Y BRANCHES AND SHALL PROVIDE STAKES FOR THEM AT THEIR PROPER LOCATIONS WITH STATIONING PLAINLY SHOWN. ANY CHANGE IN LOCATION SHALL BE REQUESTED BY WRITING BY THE OWNER OR HIS REPRESENTATIVE.
 NO REVISIONS SHALL BE MADE IN THESE PLANS WITHOUT THE APPROVAL OF THE COUNTY ENGINEER.
- USE STANDARD MANHOLE FRAMES AND COVERS, S.A.-117, EXCEPT AS NOTED.
 - USE STANDARD STRENGTH PIPE EXCEPT AS NOTED.
 - USE "THREE-LOCK" OR "SPRUE-SEAL" FOR ALL WETTED CLAY PIPE JOINTS.
 - USE LIGHT WEIGHT AND STRENGTH PIPE SPEC'S, SEC. 3, 3B AND 4B.
 - RESURFACE ALL TRENCHES WITHIN PAVED AREAS TO MEET L.A. COUNTY ROAD DEPT., OR CALIF. STATE HIGHWAY DEPT. REQUIREMENTS IN ACCORDANCE WITH PERMITS.
 - ENCASE FOUR FEET OF SEWER AT POINTS OF INTERFERENCE WITH POLES, S.A.-172-CASE III.
 - HOUSE LATERALS TO BE CONSTRUCTED WITH INVERTS AT PROPERTY LINE. FIRST SHOW CURB GRADE EXCEPT AS NOTED.
 - ALL STRUCTURES SHALL BE BRICK SEWER STRUCTURES, S.A.-104, EXCEPT AS NOTED.
 - FOR ALLOWANCE LOADS TEST USE FORMULA NO. 1, SPEC'S, SEC. 54.
 - THE PRIVATE ENGINEER IS TO FURNISH THE HOUSE LATERAL DEPTH AT THE PROPERTY LINE BELOW THE TOP OF CURB ELEVATION OR CENTER LINE OF ALLEY FOR EACH HOUSE LATERAL ON THE OWNER'S SHEET.
 - THE CONTRACTOR SHALL NOTIFY THE CONSTRUCTION AND STORM DRAIN DIVISION BY TELEPHONE, MADISON 9-4747, EXT. 362, AT LEAST 24 HOURS BEFORE STARTING ANY WORK UNDER THIS CONTRACT.

PROFILE ALIGNMENT AND GRADE OF P.C. 4943
 SANITARY SEWERS PAGE 1
 TO BE CONSTRUCTED IN
 TRACT NO. 24252 (27,700)

PRIVATE CONTRACT NO. 4943

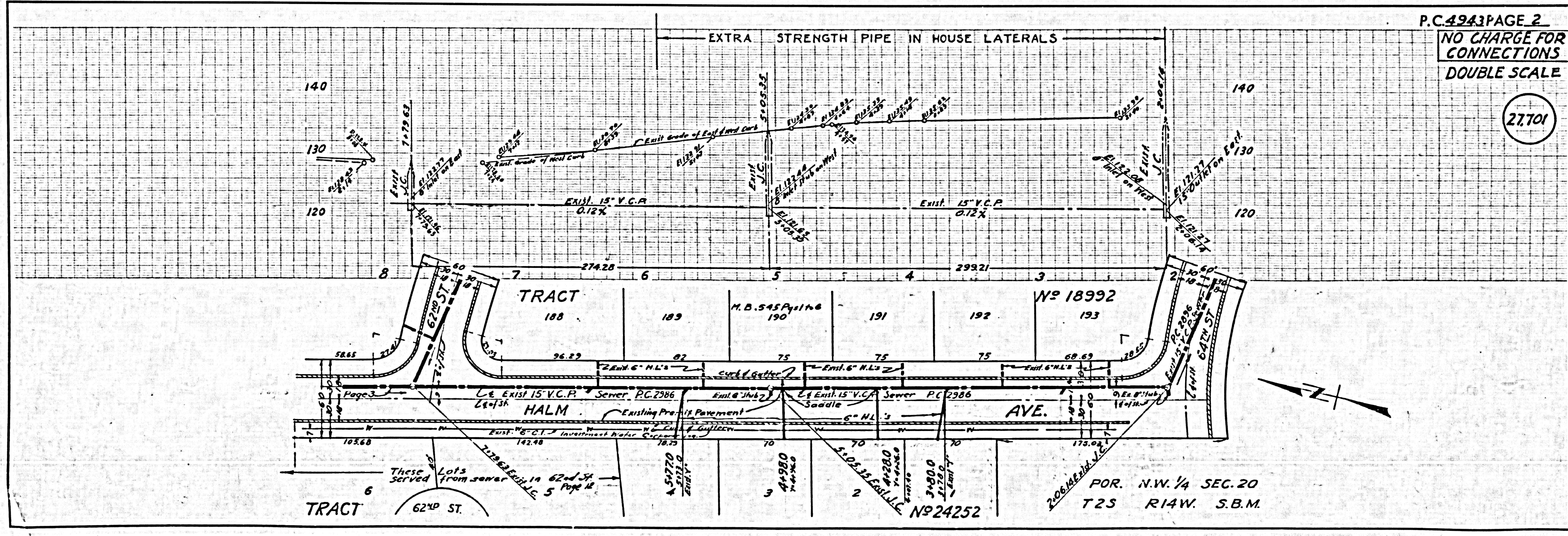
W.S. 24
 7 SHEETS, 13 PAGES
 SCALE: VERT. 1"=6' HORIZ. 1"=40' Oct. 1958
 PREPARED IN THE OFFICES OF
 L.A. INVESTMENT CO.
 BY *J.D. Mowbray*
 C.E. Mowbray REG. C.E. NO. 1629
 FOR LEGEND SEE PLAN NO. S-A-64

NOTE:
 GRADES TO WHICH THIS IMPROVEMENT IS TO BE CONSTRUCTED ARE SHOWN ON PLANS AND PROFILES. GRADE POINTS FOR TOP OF CURB, CENTER LINE OF STREETS, OR CENTER LINE OF ALLEYS ARE SHOWN BY CIRCLES ON PROFILES. AT ALL POINTS BETWEEN DESIGNATED POINTS THE GRADE SHALL BE DETERMINED SO AS TO CONFORM TO A STRAIGHT LINE DRAWN BETWEEN SAID DESIGNATED POINTS.
 ELEVATIONS ARE IN FEET ABOVE L.A. CITY DATUM 259.272 TO CORNER V.C.P. 16.1 SEA LEVEL DATUM OF 1929.
 THIS DRAWING AND THE DATA HEREON ARE HEREBY MADE A PART OF THE SPECIFICATIONS.
 WORK SHALL BE CONSTRUCTED ACCORDING TO SPECIFICATIONS ON FILE IN THE OFFICE OF THE COUNTY ENGINEER AND SHALL BE PROSECUTED ONLY IN THE PRESENCE OF THE COUNTY ENGINEER.
 BEFORE WORK CAN BE STARTED, THE CONTRACTOR MUST OBTAIN A PERMIT TO EXCAVATE IN COUNTY SHEETS FROM THE L.A. COUNTY SOIL BUREAU. THE CONTRACTOR SHALL MAKE A REPORT WITH THE COUNTY ENGINEER, ROOM 204 SAN ANTONIO BLDG., 225 SO. BROADWAY, SUFFICIENT TO COVER THE COST OF CONSTRUCTION INSPECTION AND RECORD PLANS.
 APPROVAL OF THIS PLAN BY THE COUNTY OF LOS ANGELES DOES NOT CONSTITUTE A REPRESENTATION AS TO THE ACCURACY OF THE LOCATION OF OR THE EXISTENCE OR NON-EXISTENCE OF ANY UNDERGROUND UTILITY PIPE, OR STRUCTURE WITHIN THE BIRTH OF THIS PROJECT. THE BUREAU HAS NO RECORD OF ANY SUCH UTILITY PIPE OR STRUCTURE WITHIN THE BIRTH OF THIS PROJECT. THE BUREAU HAS NO RECORD OF ANY SUCH UTILITY PIPE OR STRUCTURE WITHIN THE BIRTH OF THIS PROJECT.
 IF WORK IS TO BE DONE IN A STATE HIGHWAY, A PERMIT SHALL BE OBTAINED FROM THE STATE OF CALIFORNIA, DIVISION OF HIGHWAYS, 128 SOUTH SPRING STREET.

ISSUE NO PERMITS UNTIL
 OUTLET IS CONSTRUCTED

NO CHARGE FOR
 CONNECTIONS
Alvin R. H. A.

COUNTY OF LOS ANGELES, CALIFORNIA
 APPROVED, JOHN A. LAMME, COUNTY ENGINEER
 APPROVED, A. M. RAWN, CHIEF ENGINEER
 BY *J.D. Mowbray* SANITATION ENGINEER
 BY *A. M. Rawn* CHIEF ENGINEER
 CHECKED BY *J. K. Dade* 1-20-59
 OFFICE OF COUNTY ENGINEER, 2ND FLOOR, 225 S. BROADWAY

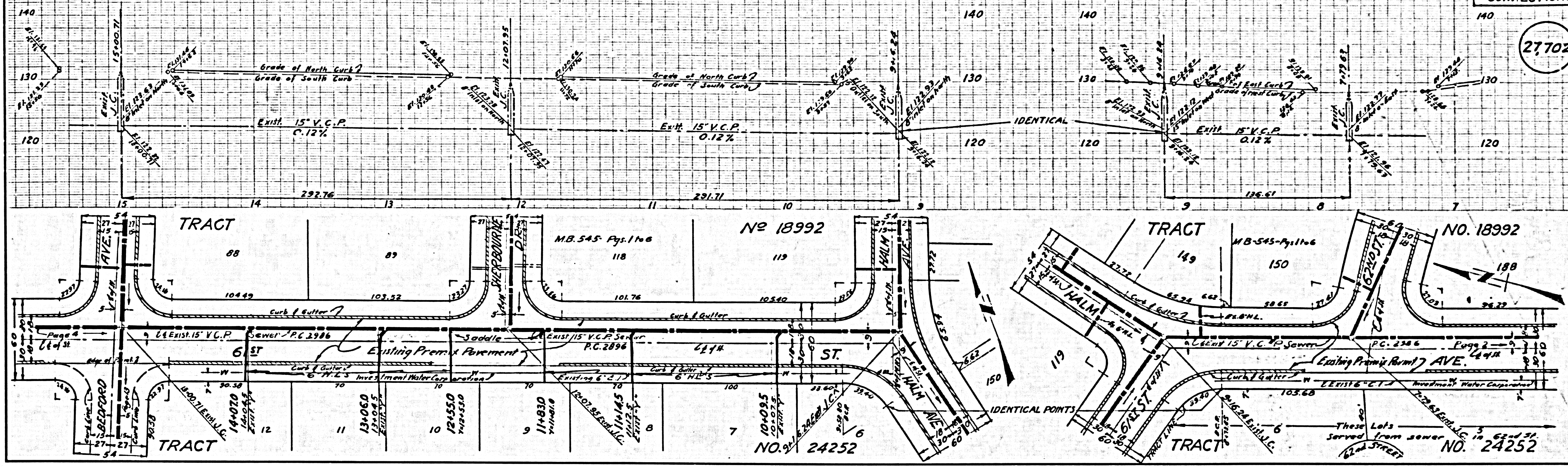


P.C. 4943 PAGE 2
 NO CHARGE FOR
 CONNECTIONS
 DOUBLE SCALE
 (27,701)

POR. N.W. 1/4 SEC. 20
 T2S R14W. S.B.M.

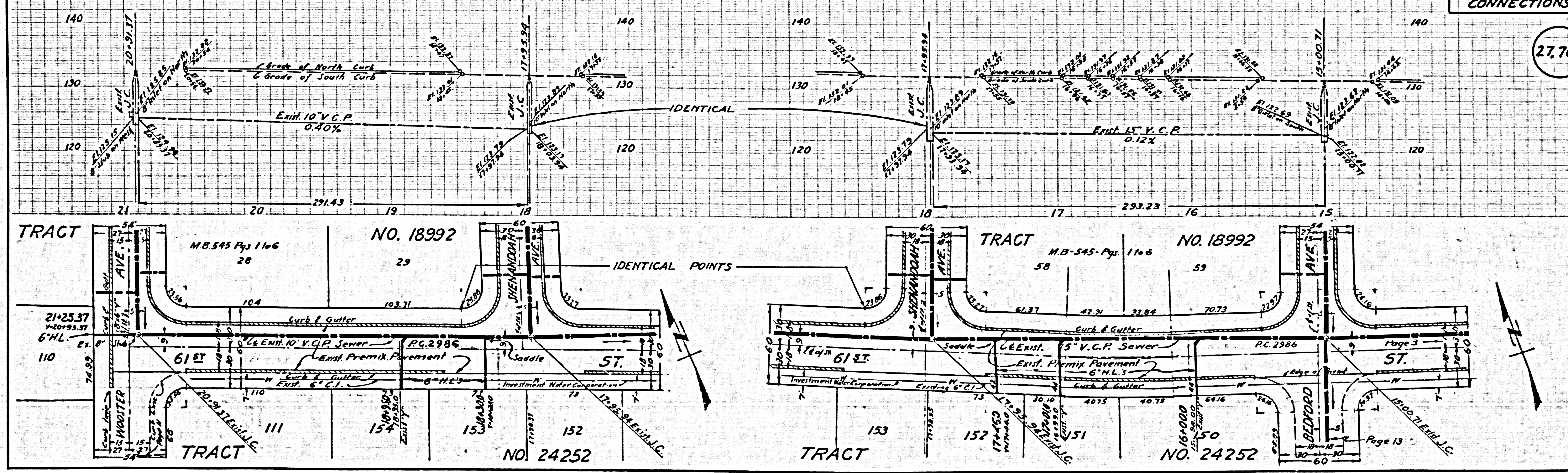
NO CHARGE FOR
CONNECTIONS

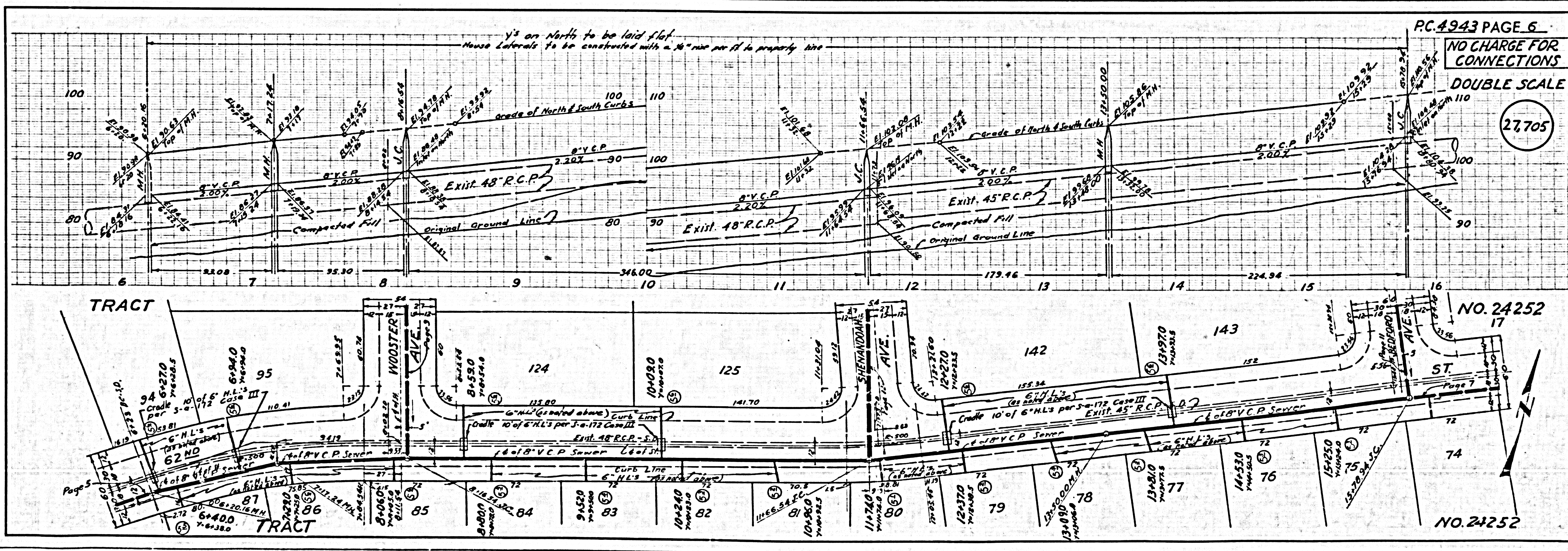
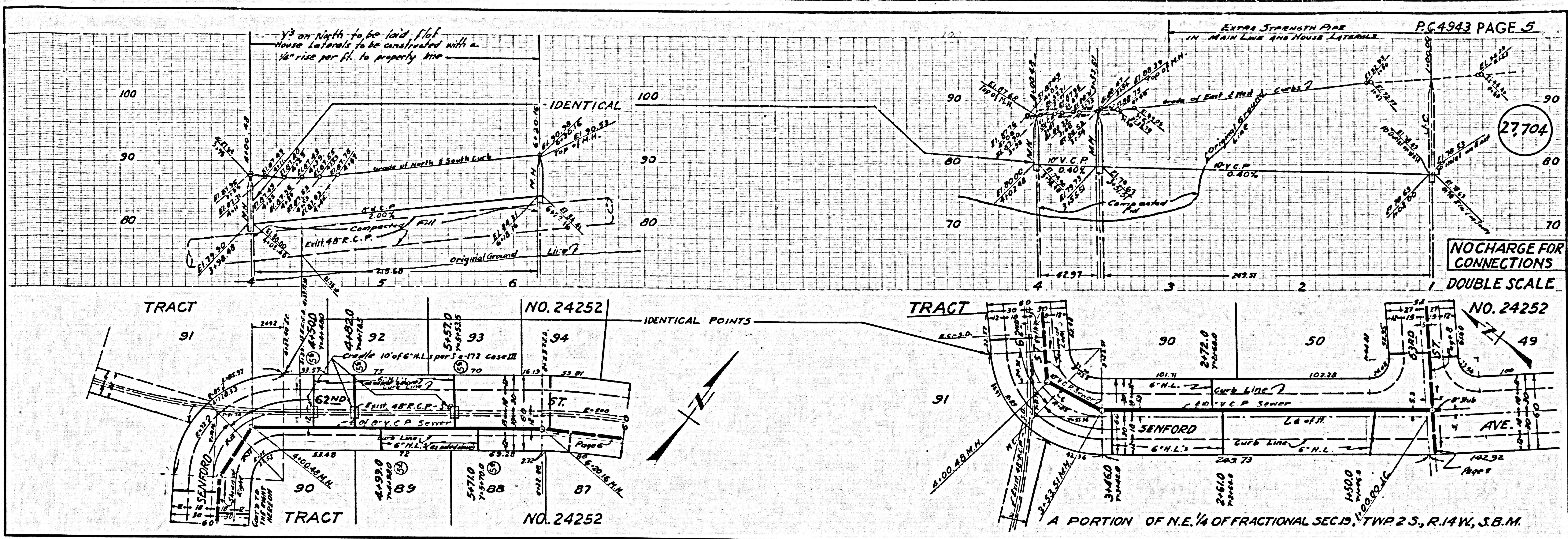
27.702



NO CHARGE FOR
CONNECTIONS

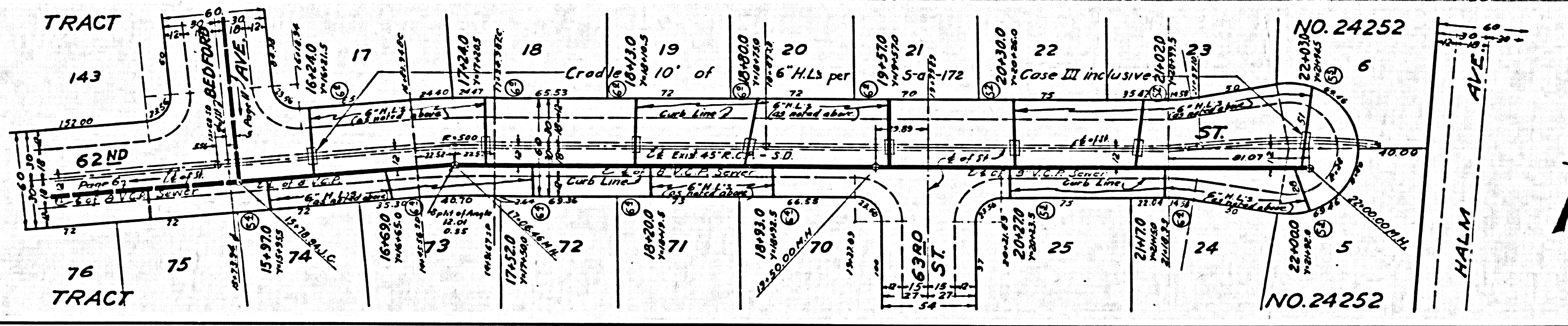
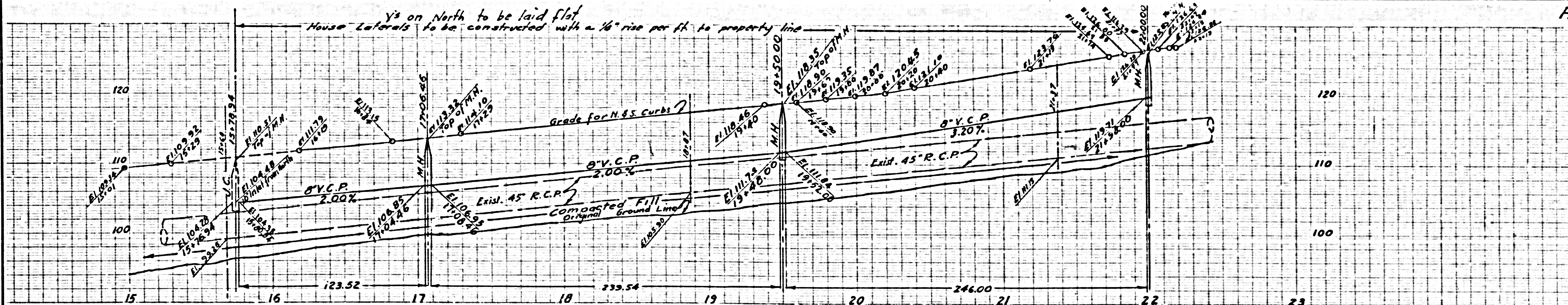
27.703





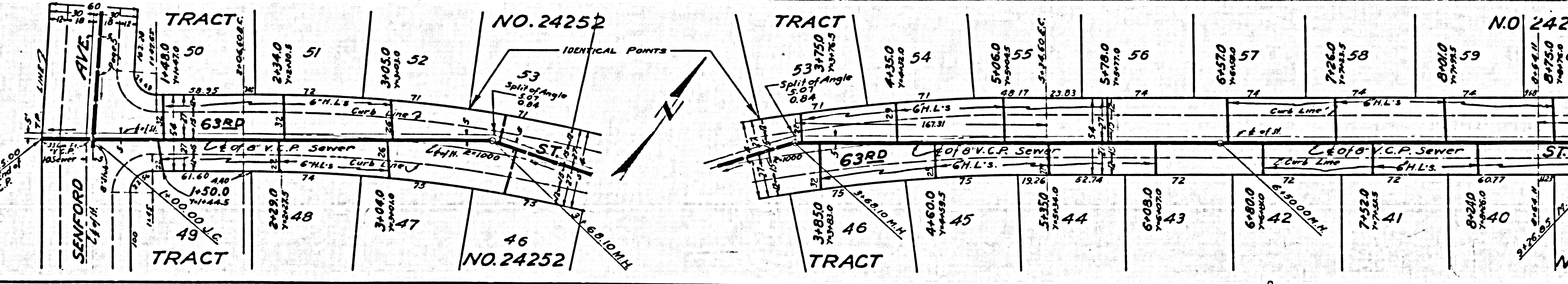
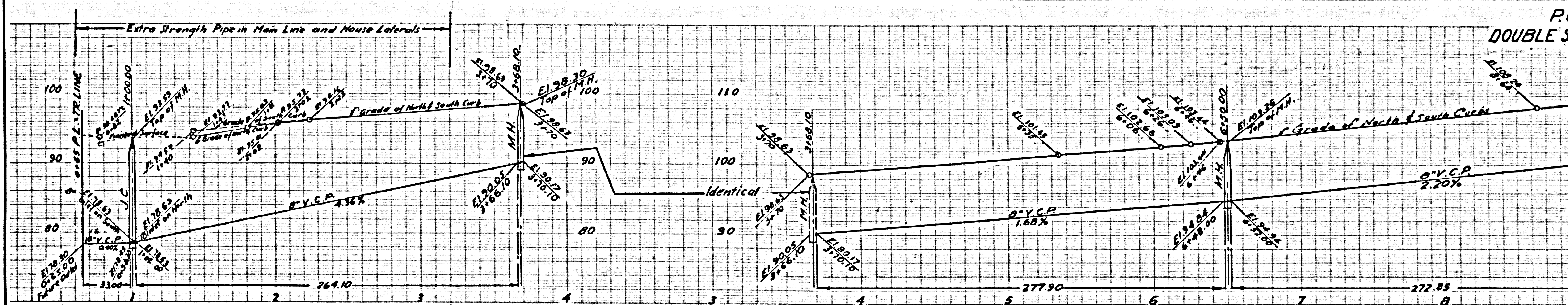
NO CHARGE FOR CONNECTIONS
DOUBLE SCALE

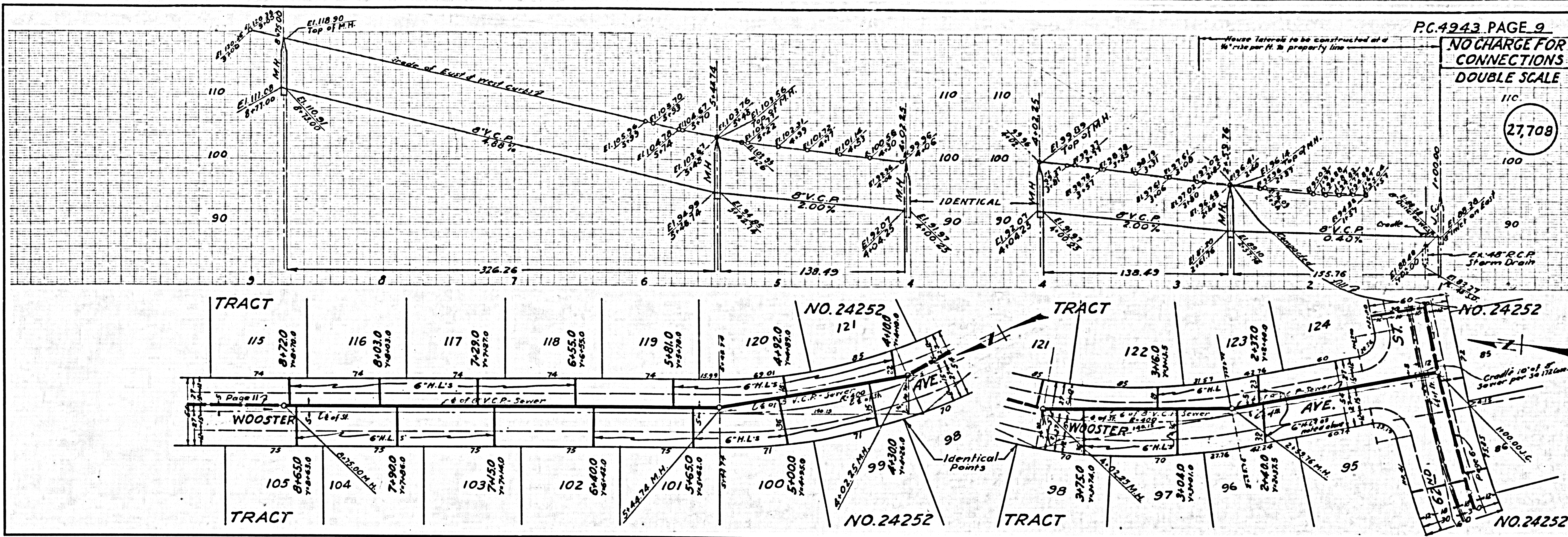
27,706



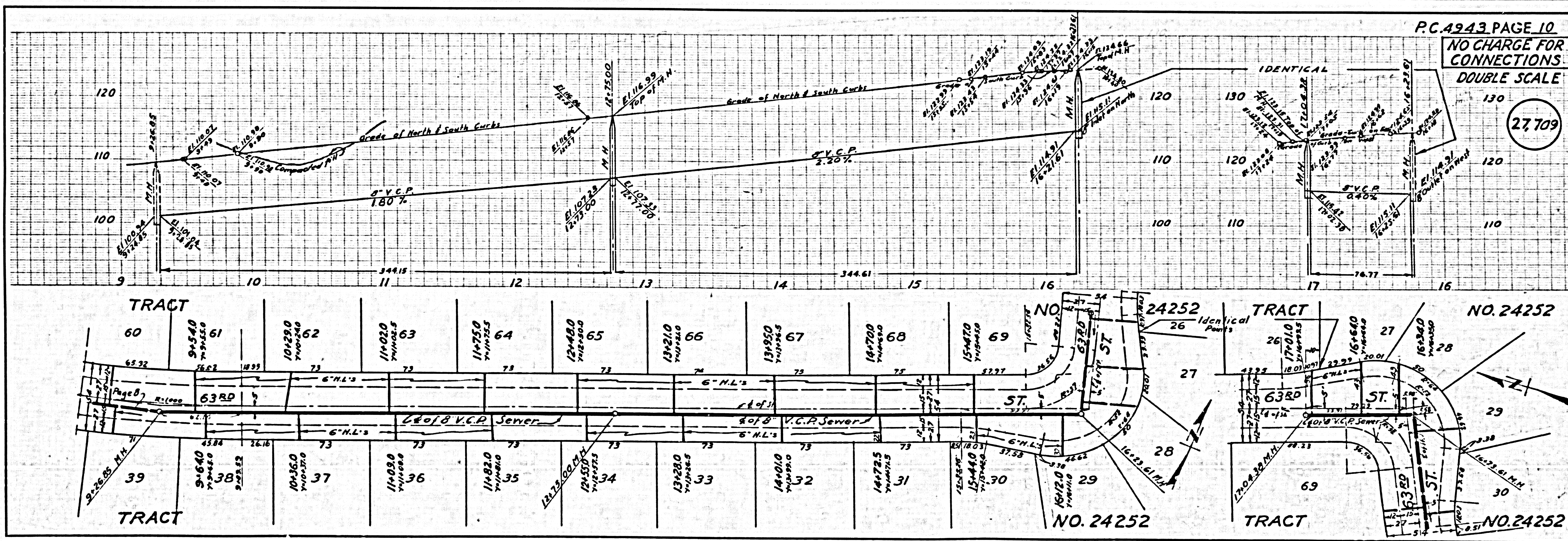
DOUBLE SCALE NO CHARGE FOR CONNECTIONS

27,707





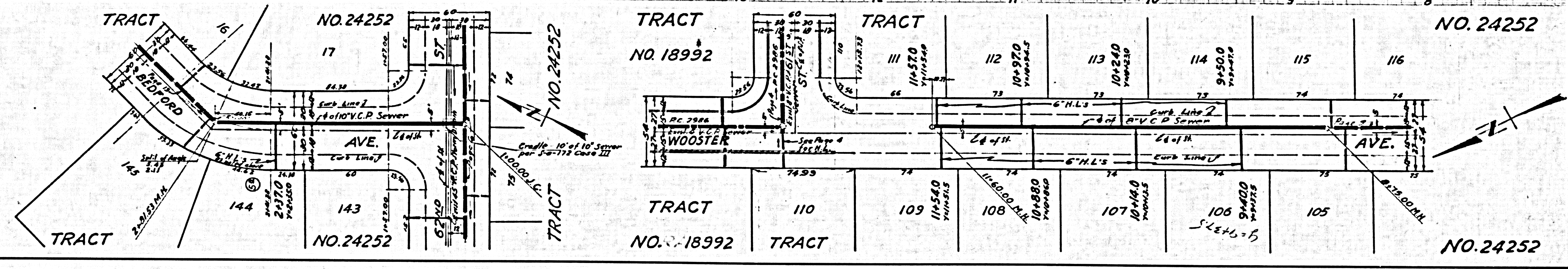
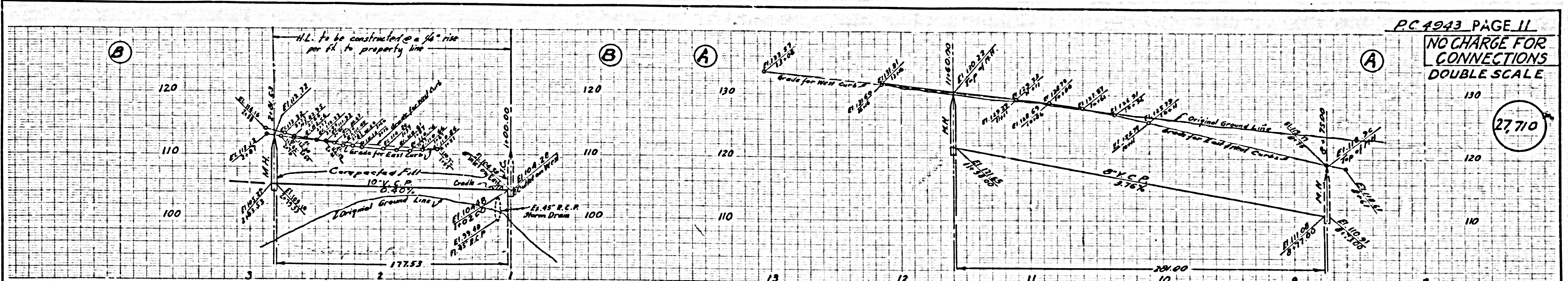
M.H. M.H. M.H. M.H. M.H. J.C.



M.H. M.H. M.H.

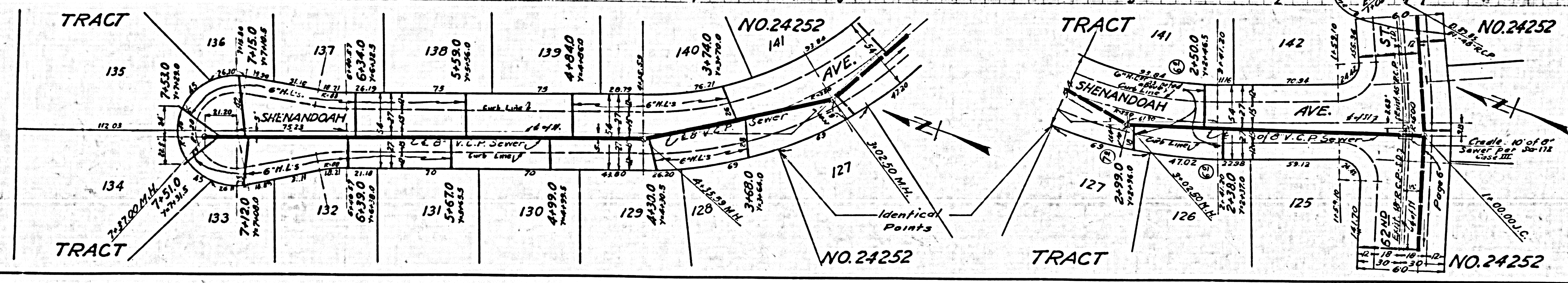
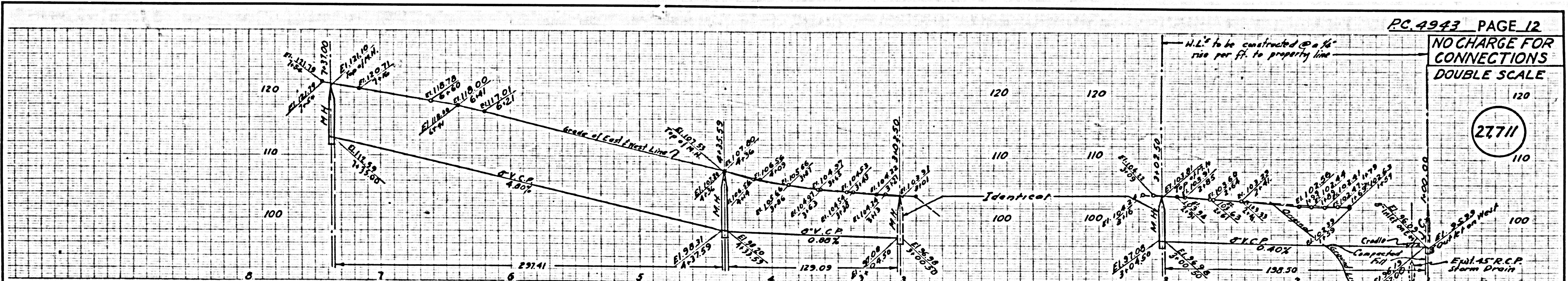
NO CHARGE FOR CONNECTIONS DOUBLE SCALE

27,710



NO CHARGE FOR CONNECTIONS DOUBLE SCALE

27,711



PC.4943 PAGE 13
NO CHARGE FOR CONNECTIONS
DOUBLE SCALE

21712

