

LENNOX BLDG. DIST. NO. 7

PROFILE ALIGNMENT AND GRADE OF
SANITARY SEWERS PAGE 1

TRACT NO 24566

PRIVATE CONTRACT NO. 4947

W.S. 26
2 SHEETS; 4 PAGES

SCALE: VERT. 1" = 4' HORIZ. 1" = 20'

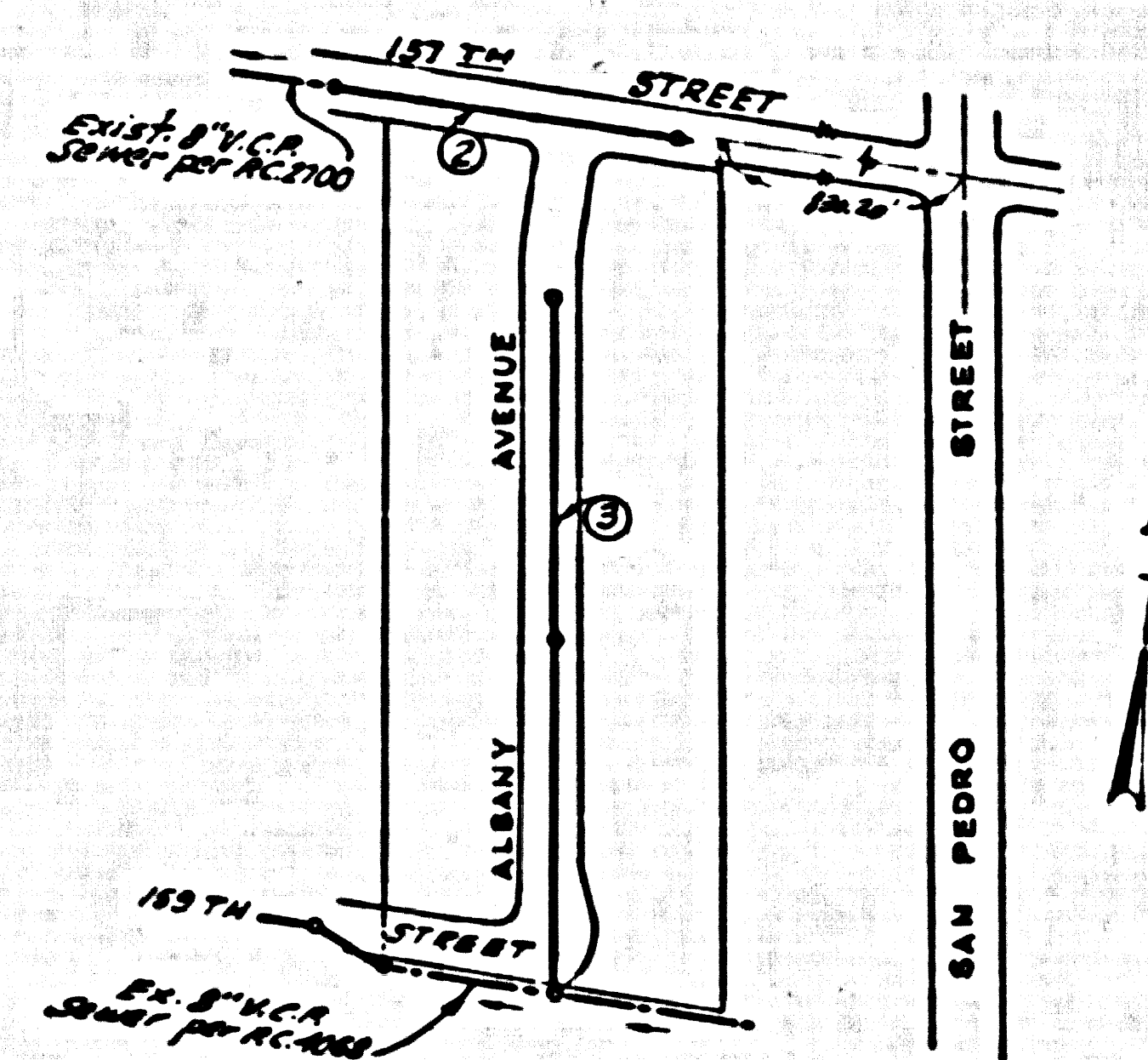
OCTOBER, 1958.

PREPARED IN THE OFFICES OF

BARCLAY - PEARSON CO., INC.

REG. C. E. NO. 8742

FOR LEGEND SEE PLAN NO. S-A-64



INDEX MAP
SCALE 1"=200'
TRACT NO 24566
P.C. 4947

CONNECTION - CHARGES
AS INDICATED

- NOTES:
- PROVIDE STAKES ON THE PROPERTY LINE OR PROPERTY LINES PRODUCED AT RIGHT ANGLES TO THE SEWER LINE AT THE CENTER LINE OF EACH MANHOLE.
 - NO REPRESENTATIVE OF THE COUNTY ENGINEER WILL SURVEY OR LAYOUT ANY PORTION OF THE WORK.
 - THE OWNER OR HIS AUTHORIZED REPRESENTATIVE SHALL FURNISH THE COUNTY ENGINEER WITH GRADE SHEETS AND STATION FOR ALL HOUSE LATERALS AND T BRANCHES AND SHALL PROVIDE STAKES FOR THEM AT THEIR PROPER LOCATIONS WITH STATIONING PLAINLY MARKED. ANY CHANGE IN LOCATION SHALL BE REQUESTED IN WRITING BY THE OWNER OR HIS REPRESENTATIVE.
 - NO REVISIONS SHALL BE MADE IN THESE PLANS WITHOUT THE APPROVAL OF THE COUNTY ENGINEER.
 - USE STANDARD MANHOLE FRAMES AND COVERS, S-A-117, EXCEPT AS NOTED.
 - USE STANDARD STRENGTH PIPE EXCEPT AS NOTED.
 - USE CEMENT MORTAR FOR ALL VITRIFIED CLAY PIPE JOINTS.
 - REFERENCE ALL TRENCH WIDTHS UNLESS NOTED TO MEET L. A. COUNTY ROAD DEPT., OR CALIF. STATE HIGHWAY DEPT. DIMENSIONS IN ACCORDANCE WITH PERMITS.
 - ENCASE FOUR FEET OF SEWER AT POINTS OF INTERFERENCE WITH POLES, S-A-119.
 - HOUSE LATERALS TO BE CONSTRUCTED WITH INVERTS AT PROPERTY LINE 6" BELOW CURB GRADE EXCEPT AS NOTED.
 - ALL STRUCTURES SHALL BE BRICK SEWER STRUCTURES, S-A-104, EXCEPT AS NOTED.
 - FOR ALLOWABLE GARAGE TRENCH USE FORMULA NO. 1 SPEC'S, SEC. 24.
 - MANHOLE TOPS IN UNIMPROVED SEWERS TO BE 6" ABOVE FINISHED GRADE.
 - ALL THE LOCATIONS SHOWN FOR EXISTING SUBSTRUCTURES HAVE BEEN TAKEN FROM RECORDS AND THEIR CORRECTNESS AND COMPLETENESS IS IN NO WAY GUARANTEED. IT SHALL BE THE CONTRACTOR'S RESPONSIBILITY ALONE TO DEFINITELY LOCATE ALL UNDERGROUND LINES OF EVERY NATURE WHETHER SHOWN HEREON OR NOT, AND PROTECT THEM FROM DAMAGE. THE CONTRACTOR SHALL BEAR THE TOTAL EXPENSE OF REPAIR TO ANY LINE DAMAGED BY ANY OPERATION IN CONNECTION WITH THE PROSECUTION OF THIS WORK.
 - THE PRIVATE ENGINEER IS TO FURNISH THE HOUSE LATERAL DEPTH AT THE PROPERTY LINE BELOW THE TOP OF CURB ELEVATION FOR EACH HOUSE LATERAL ON THE GRADE SHEET.
- NOTE:
- THE CONTRACTOR SHALL NOTIFY THE CONSTRUCTION AND STORM DRAIN DIVISION BY TELEPHONE, MADISON 8-4747, EXT. 662 AT LEAST 24 HOURS BEFORE STARTING ANY WORK UNDER THIS CONTRACT.

BENCH MARK
BY 221 ELEV. 62.00 CUT SPK. W. END OF CURB ACROSS
AVENUE 1400' N. E. OF OLIVE 125' W. OF E. OF AVENUE
± 40' E. OF E. SAN PEDRO @ BASE OF HEADWALL

Elev. of this bench per 1855 (Base line) datum = 61.62164'
Subtract 0.76' from all from all elevations hereon to be
on 1955 (Base line) datum.

NOTES:

GRADES TO WHICH THE IMPROVEMENT IS TO BE CONSTRUCTED ARE SHOWN ON PLANS AND PROFILE GRADE POINTS FOR TOP OF CURB, CENTER LINE OF STREET, OR CENTER LINE OF ALLEY ARE INDICATED BY CIRCLES ON PROFILES AT ALL POINTS BETWEEN DESIGNATED POINTS THE GRADE SHALL BE ESTABLISHED SO AS TO CONFORM TO A STRAIGHT LINE DRAWN BETWEEN SAID DESIGNATED POINTS.

REVISIONS ARE IN PEE ABOVE U.S.C. & G.S. SEA LEVEL DATUM OF 1929.

THIS DRAWING AND THE DATA HEREON ARE HEREBY MADE A PART OF THE SPECIFICATIONS.

WORK SHALL BE CONSTRUCTED ACCORDING TO SPECIFICATIONS ON FILE IN THE OFFICE OF THE COUNTY ENGINEER AND SHALL BE PROSECUTED ONLY IN THE PRESENCE OF THE COUNTY ENGINEER.

BEFORE WORK CAN BE STARTED, THE CONTRACTOR MUST OBTAIN A PERMIT TO EXCAVATE IN COUNTY STREETS FROM THE L. A. COUNTY ROAD DEPT., S-A-117, AND MAKE A DEPOSIT WITH THE COUNTY ENGINEER, ROOM 304 PAN AMERICAN BUILDING, 338 SO. HOUGHAWAY AVENUE TO COVER THE COST OF CONSTRUCTION INSPECTION AND RECORD PLANS.

APPROVAL OF THIS PLAN BY THE COUNTY OF LOS ANGELES DOES NOT CONSTITUTE A REPRESENTATION AS TO THE ACCURACY OF THE LOCATION OR THE EXISTENCE OR NON-EXISTENCE OF ANY UNDERGROUND UTILITY PIPE, OR STRUCTURE WITHIN THE LIMITS OF THE PROJECT. THIS NOTE APPLIES TO ALL PAGES.

IF WORK IS TO BE DONE ON A STATE HIGHWAY, A PERMIT MUST BE OBTAINED FROM THE STATE OF CALIFORNIA, DIVISION OF HIGHWAYS, 120 SOUTH SPRING STREET.

COUNTY OF LOS ANGELES, CALIFORNIA

APPROVED, JOHN A. LAMME, COUNTY ENGINEER

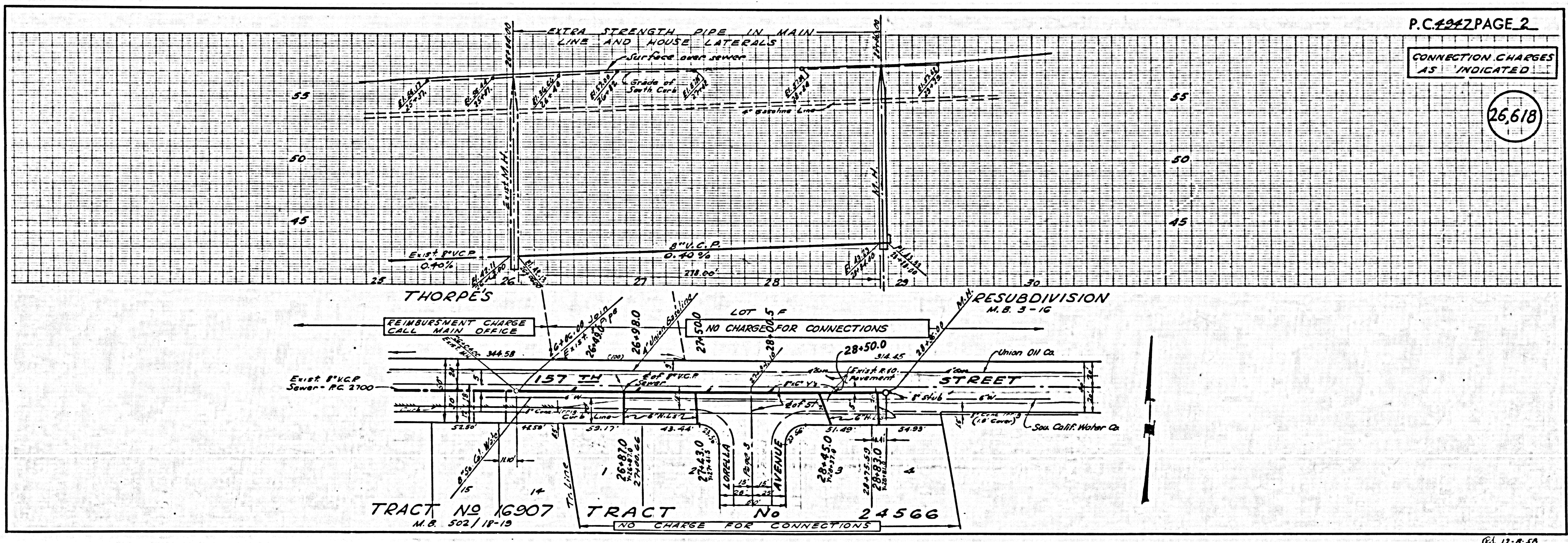
APPROVED, G.E. COMPTON, CHIEF ENGINEER

BY *L.A. Hughes* CHIEF ENGINEER

BY *G.E. Compton* CHIEF ENGINEER

CHECKED BY *W. D. Oude* 11-12-58

OFFICE OF COUNTY ENGINEER, REG. C. E. NO. 9424



P.C. 4947 PAGE 2

CONNECTION CHARGES
AS INDICATED

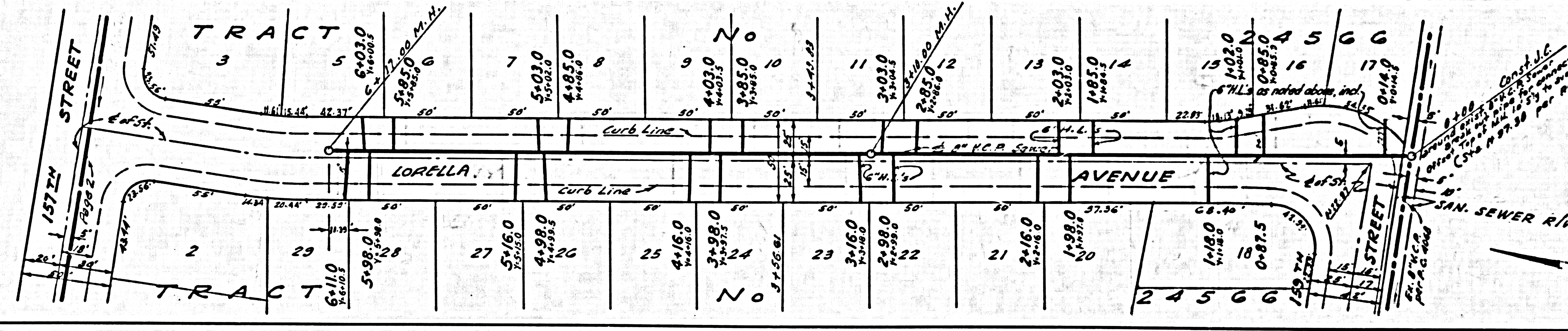
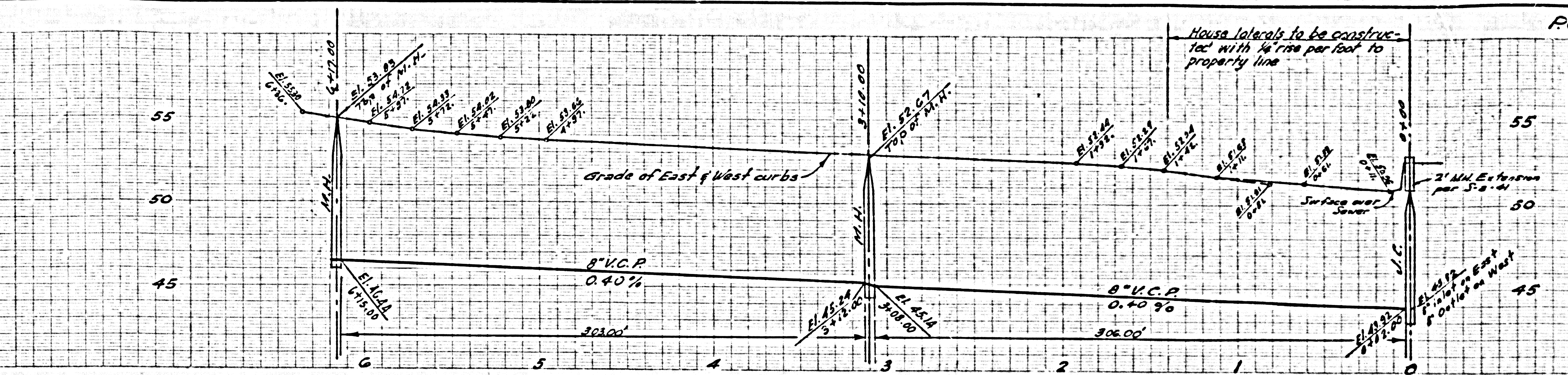
26,618

TRACT NO 16907 M.B. 502/18-19

TRACT No 24566 NO CHARGE FOR CONNECTIONS

NO CHARGE FOR CONNECTIONS

26,619



66-12-8-58

CONNECTION CHARGES AS INDICATED

26,620

