

WHITTIER BLDG. DIST. NO. 11

PROFILE ALIGNMENT AND GRADE OF P.C. 4949

SANITARY SEWERS PAGE 1

TO BE CONSTRUCTED IN

TRACT N^o 24561 26832

PRIVATE CONTRACT NO. 4949

W.S. 34

3 SHEETS, 5 PAGES

SCALE: HORIZ. 1" = 40' VERT. 1" = 5'

SEPT. 11, 1958

PREPARED IN THE OFFICES OF

KEMMERER ENGINEERING CO., INC.

By: *Harold C. Thomson*
REG. C. E. NO. 3226

FOR LEGEND SEE PLAN NO. S-A-64

NOTE: GRADES TO WHICH THE IMPROVEMENT IS TO BE CONSTRUCTED ARE SHOWN ON PLANS AND PROFILE. GRADE POINTS FOR TOP OF CURB, CENTER LINE OF STREET, OR CENTER LINE OF ALLEY ARE SHOWN BY CIRCLES ON PROFILES. AT ALL POINTS BETWEEN RESPECTIVE POINTS THE GRADE SHALL BE ESTABLISHED TO BE TO CENTER LINE PLUMBY BETWEEN SAID POINTS. ELEVATIONS ARE 36 FEET ABOVE U.S. C.A.S. SEA LEVEL (M.T.C. 22 FEET). THIS DRAWING AND THE DATA HEREON ARE HEREBY MADE A PART OF THE SPECIFICATIONS. WORK SHALL BE CONSTRUCTED ACCORDING TO SPECIFICATIONS ON FILE IN THE OFFICE OF THE COUNTY ENGINEER AND SHALL BE PROSECUTED ONLY IN THE PRESENCE OF THE COUNTY ENGINEER. SPECIAL WORK CAN BE STARTED; THE CONTRACTOR MUST OBTAIN A PERMIT TO OCCUPY IN COUNTY STREETS FROM THE L.A. COUNTY ROAD DEPT., 2157 MAIN ST., AND MAKE A DEPOSIT WITH THE COUNTY ENGINEER, ROOM 224 MAIN AMERICAN BLDG., ONE \$10.00 BOND TO COVER THE COST OF CONSTRUCTION INSPECTION AND SECOND PLANS. APPROVAL OF THIS PLAN BY THE COUNTY OF LOS ANGELES DOES NOT CONSTITUTE A REPRESENTATION AS TO THE ACCURACY OF THE LOCATION OF OR THE EXISTENCE OR NON-EXISTENCE OF ANY UNDERGROUND UTILITY PIPE, OR STRUCTURE WITHIN THE LIMITS OF THE PROJECT. THIS NOTE APPLIES TO ALL PAGES. IF WORK IS TO BE DONE IN A STATE HIGHWAY, A PERMIT MUST BE OBTAINED FROM THE STATE OF CALIFORNIA, DIVISION OF HIGHWAYS, 120 SOUTH BRIDGE STREET.

COUNTY OF LOS ANGELES, CALIFORNIA

APPROVED, JOHN A. LAMME, COUNTY ENGINEER

APPROVED, C.E. COMPTON, CHIEF ENGINEER

By: *John A. Lamme* SANITATION ENGINEER

By: *L. Posthumus* OFFICE ENGINEER

CHECKED BY: *W. O'Neil* 12-15-58

OFFICE OF COUNTY ENGINEER, REG. C. E. NO. 3226

SUBMITTED BY: *Robert L. Johnson* 12-11-58
FOR CERTIFIED ARCHITECT/ENGINEER, REG. C. E. NO. 3871

NOTES:

- PROVIDE STAKES ON THE PROPERTY LINE OR PROPERTY LINES PRODUCED AT RIGHT ANGLES TO THE SEWER LINE AT THE CENTER LINE OF EACH MANHOLE.
- NO REPRESENTATIVE OF THE COUNTY ENGINEER WILL SURVEY OR LAYOUT ANY PORTION OF THE WORK.
- THE OWNER OR HIS AUTHORIZED REPRESENTATIVE SHALL FURNISH THE COUNTY ENGINEER WITH GRADE SHEETS AND STATION FOR ALL HOUSE LATERALS AND Y BRANCHES AND SHALL PROVIDE STAKES FOR THEM AT THEIR PROPER LOCATIONS WITH STATIONING PLAINLY MARKED. ANY CHANGE IN LOCATION SHALL BE REQUESTED IN WRITING BY THE OWNER OR HIS REPRESENTATIVE.
- NO REVISIONS SHALL BE MADE IN THESE PLANS WITHOUT THE APPROVAL OF THE COUNTY ENGINEER.
- USE STANDARD MANHOLE FRAMES AND COVERS, S.A.-117, EXCEPT AS NOTED.
- USE STANDARD STRENGTH PIPE EXCEPT AS NOTED.
- USE CEMENT PORTLAND CONCRETE, 1500-1000, 100% SAND-100% GRAVEL FOR ALL UTILITY CLEAN PIPING JOINTS, FOR SPECIAL S.A.C. 240 AS SPECIFIED IN ACCORDANCE WITH PERMITS.
- ENCASE FOUR FEET OF SEWERS AT POINTS OF INTERFERENCE WITH POLES, S.A.-175, CLASS 2.
- HOUSE LATERALS TO BE CONSTRUCTED WITH INVERTS AT PROPERTY LINE... 0' JUST BELOW CURB GRADE EXCEPT AS NOTED.
- ALL STRUCTURES SHALL BE BRICK SEWER STRUCTURES, S.A.-194, EXCEPT AS NOTED.
- FOR ALLOWABLE LEAKAGE TEST USE FORMULA NO. 1, SPEC. SEC. 66.
- MANHOLE TOPS IN IMPROVED RIGHTS-OF-WAY TO BE 6" ABOVE FINISHED GRADE.
- THE PRIVATE BANSAMER IS TO FURNISH THE HOUSE LATERAL DEPTH AT THE PROPERTY LINE BEHIND THE TOP OF CURB ELEVATION FOR EACH HOUSE LATERAL ON THE GRADE SHEET.

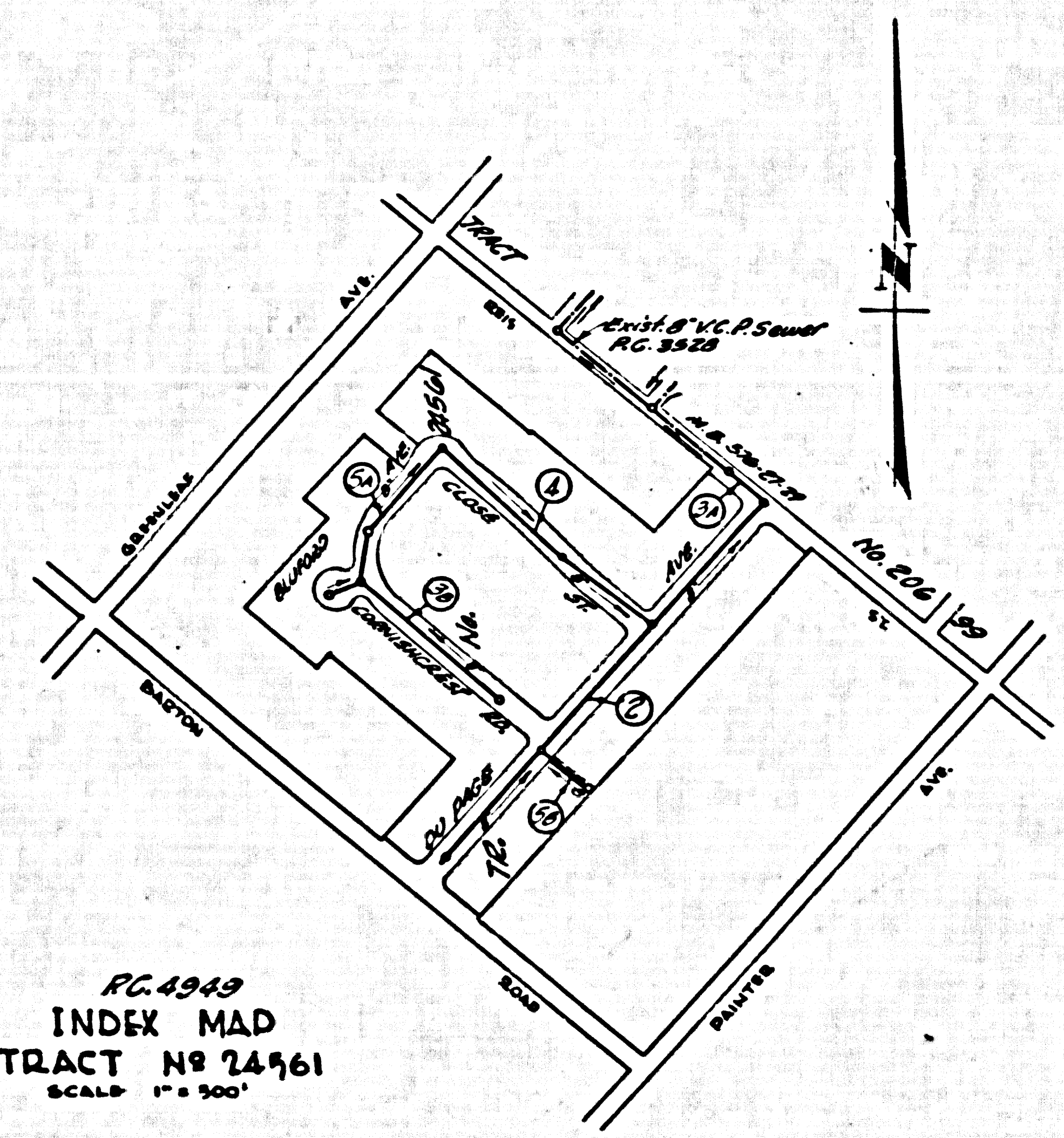
B.M. S.V. 1171 ELEV. 148.505 (1944)
LEADS TO MAIL IN EAST SIDE OF CONC. WALK
IN FRONT OF EDISON CO. SUB-STATION
214' SO. OF & OF LOS ANGELES ST. BETWEEN
GOSSELINK AVE. & SANTA FE ST. (SANTA FE ST. QUAD.)

COLLECT CHARGES AS INDICATED

W. O'Neil 12-11-58

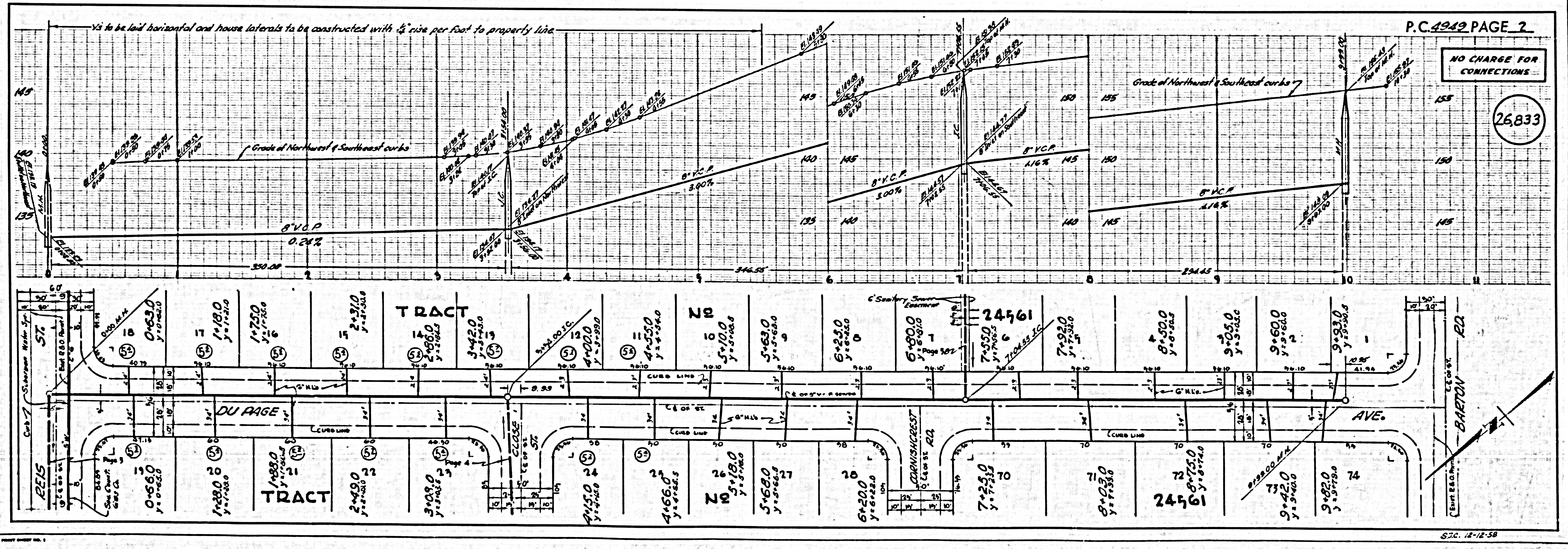
NOTE:

THE CONTRACTOR SHALL NOTIFY THE CONSTRUCTION AND STOP WORK DESIGN BY TELEPHONE, MADISON 9-4747, EX. 620, AT LEAST 24 HOURS BEFORE STARTING ANY WORK UNDER THIS CONTRACT.



PC. 4949
INDEX MAP
TRACT N^o 24561
SCALE: 1" = 500'

Connection Change 9/18/57/1058



P.C. 4949 PAGE 2

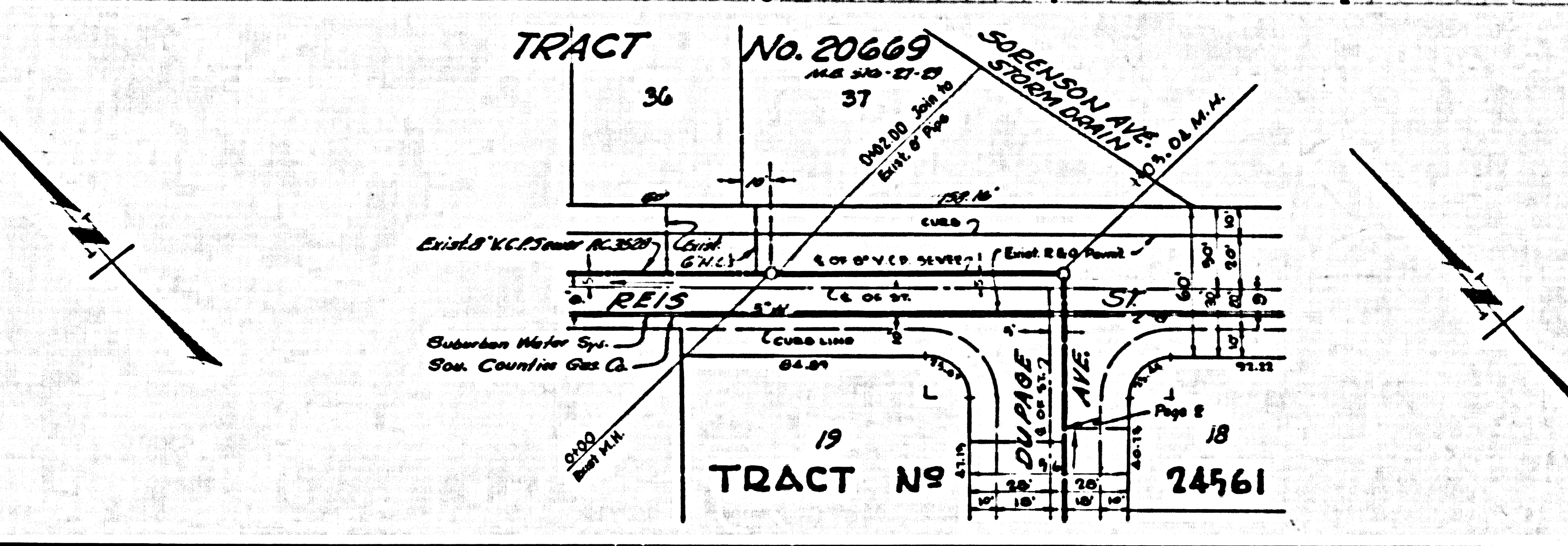
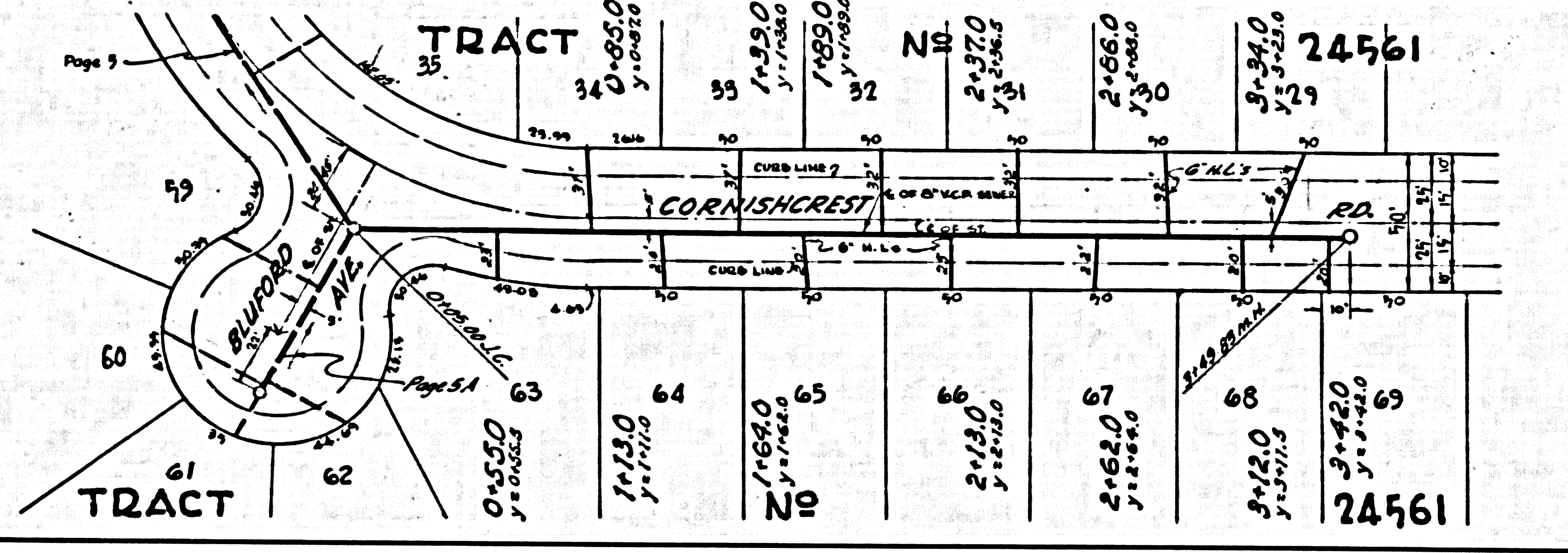
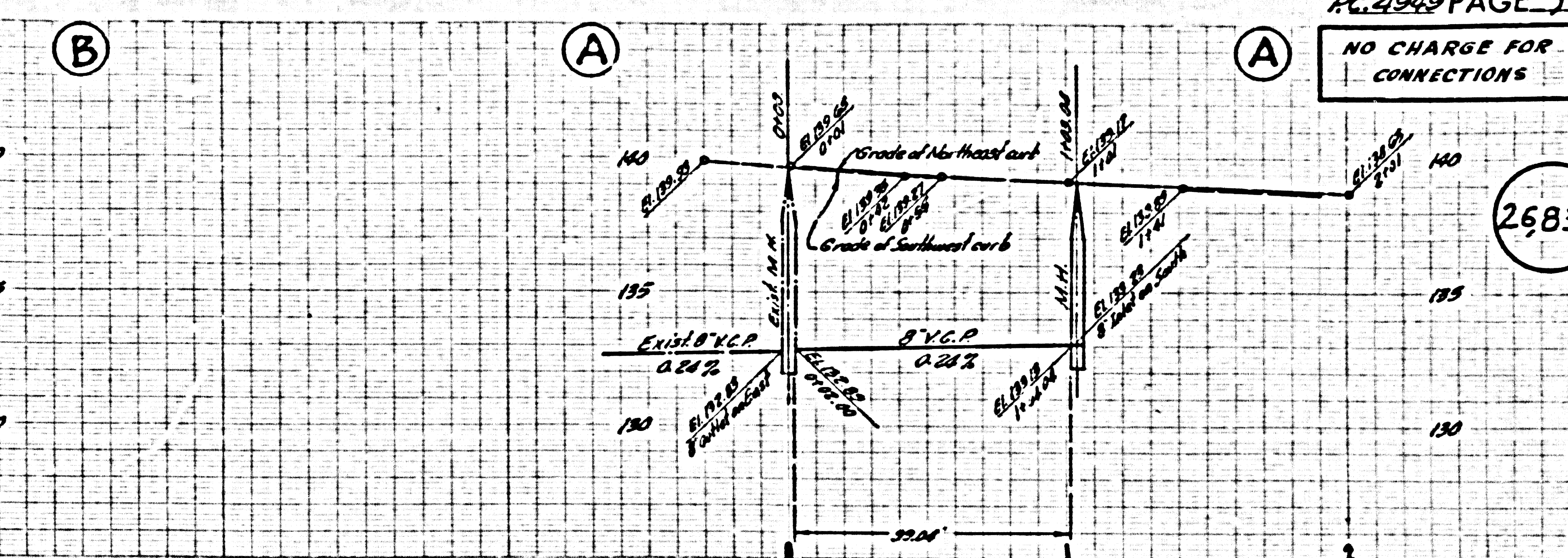
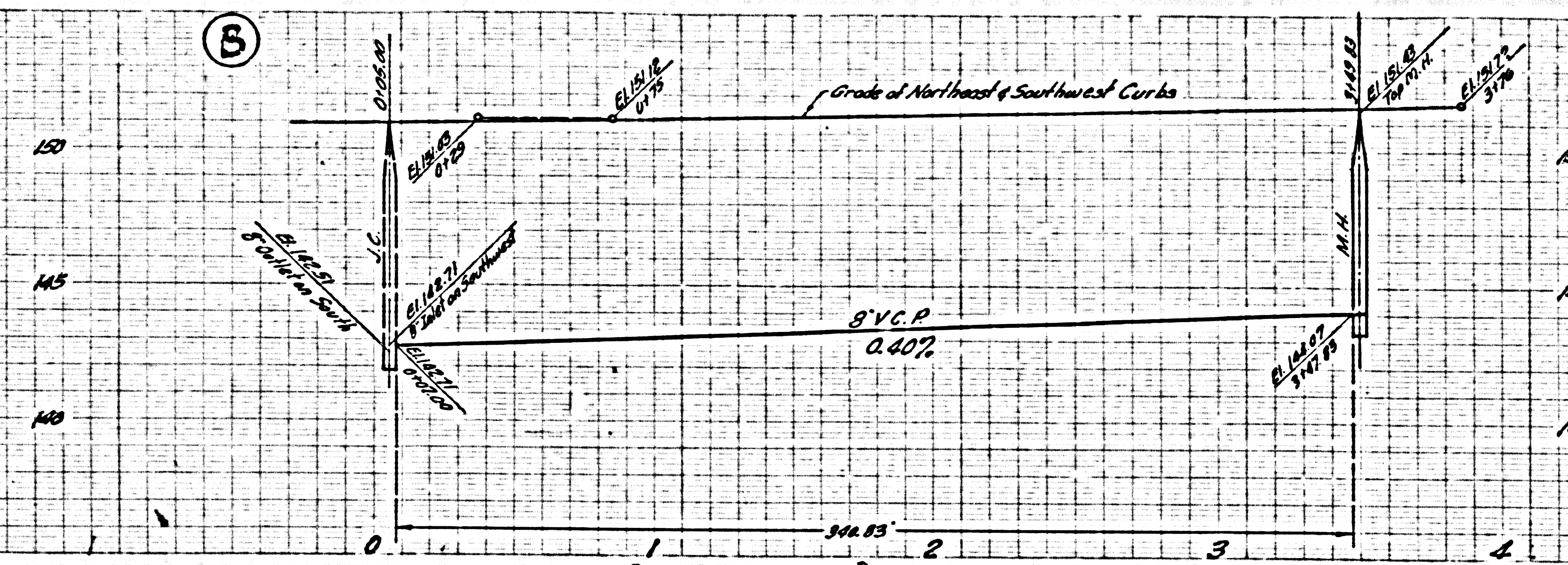
NO CHARGE FOR CONNECTIONS

26832

S7C. 12-12-58

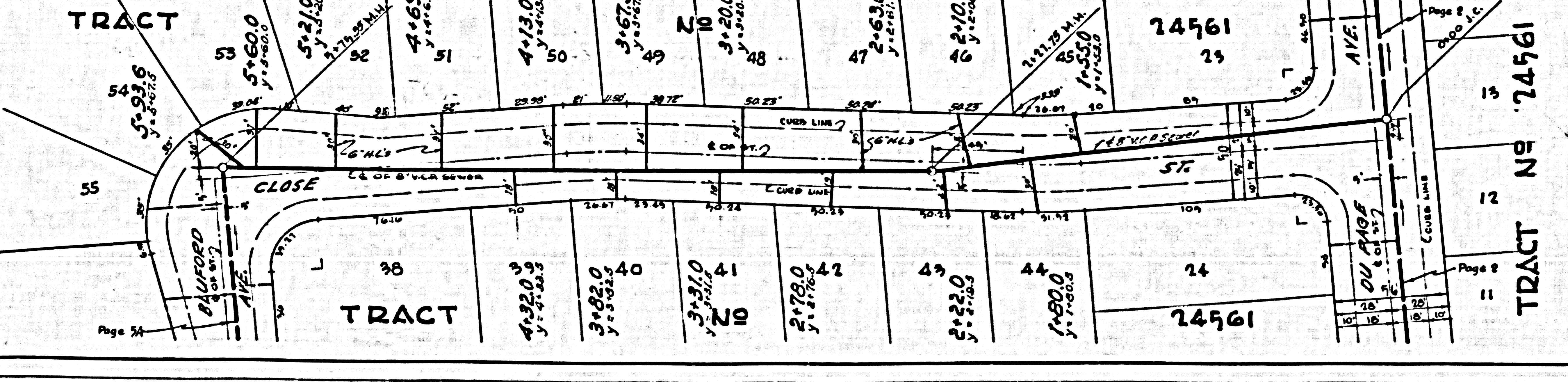
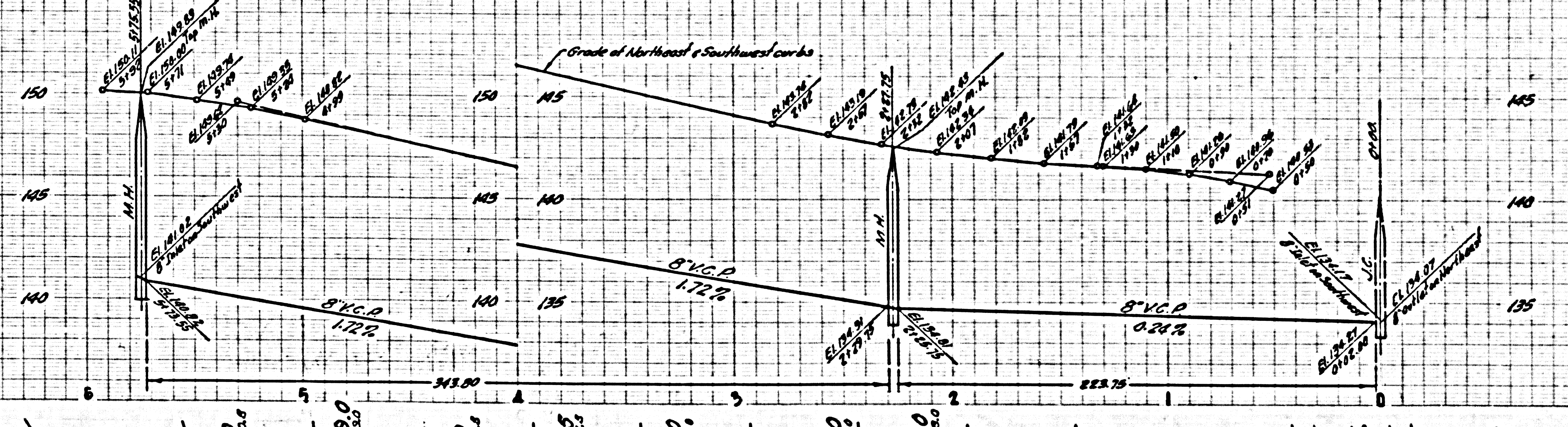
NO CHARGE FOR CONNECTIONS

26834



NO CHARGE FOR CONNECTIONS

26835



COLLECT CHARGES AS INDICATED

26,836

