

NOTE:

Provide stakes on the property lines or property lines produced at right angles to the sewer line at the center line of each manhole.

No representative of the County Engineer will survey or layout any portion of the work.

The owner or his authorized representative shall furnish the County Engineer with grade sheets and stations for all house laterals and Y branches and shall provide stakes for them at their proper locations with stationing plainly marked. Any change in location shall be requested in writing by the owner or his representative.

No revisions shall be made in these plans without the approval of the County Engineer.

1. Use standard manhole frames and covers, S-a-117 EXCEPT AS NOTED
2. Use standard strength pipe except as noted.
3. Use cement mortar OR "WEDGE-LOCK" OR "SPEED-SEAL" FOR ALL VITRIFIED CLAY PIPE JOINTS PER SPECS. SEC. 38 & 48
4. Resurface all trench within paved area to meet L.A. County Road Dept. or California State Highway Dept requirements in accordance with permit.
5. Encase four feet of sewer at points of interference with poles, S-a-172 CASE III
6. All structures shall be brick sewer structures, S-a-104 EXCEPT AS NOTED
7. For allowable leakage test, use Formula No. 1, Spec's, Sec. 54
8. Manhole tops in unimproved Rights Of Way to be 6" above finish grade.
9. THE CONTRACTOR SHALL NOTIFY THE CONSTRUCTION AND STORM DRAIN DIVISION BY TELEPHONE MA 8-4747 EXT. 382 AT LEAST 24 HOURS BEFORE STARTING ANY WORK UNDER THIS CONTRACT.

PROFILE, ALIGNMENT AND GRADE OF
SANITARY SEWERS
 TO BE CONSTRUCTED
 FOR
UNION ICE COMPANY

PC. 4950
PAGE 1

26,709

PRIVATE CONTRACT NO. 4950
W. S. 36
1 SHEET, 2 PAGES

Scale: VERT. 1"=4'
HORIZ. 1"=40'

PREPARED IN THE OFFICES OF
JAMES A. LYNCH

By *James A. Lynch* Reg. C.E. No. 6055
FOR LEGEND SEE PLAN NO. S-6-64

NOTE:

Grades to which this improvement is to be constructed are shown on plans and profiles. Grade points for top of curbs, center line of streets, or center line of alleys are shown by circles on profiles. At all points between designated points the grade shall be established so as to conform to a straight line drawn between said designated points.

Elevations are in feet above U.S.C. & G.S. SEA LEVEL DATUM OF 1929.

This drawing and the data hereon are hereby made a part of the specifications.

Work shall be constructed according to specifications on file in the office of the County Engineer and shall be prosecuted only in the presence of the County Engineer.

Before work can be started, the contractor must obtain a permit to excavate in County streets from the L.A. County Road Dept., RD. DIST. 8 and make a deposit with the County Engineer, 233 SO. BROADWAY sufficient to cover the cost of construction inspection and record plans.

Approval of this plan by the County of Los Angeles does not constitute a representation as to the accuracy of the location of or the existence or non-existence of any underground utility, pipe, or structure within the limits of this project. This note applies to all sheets.

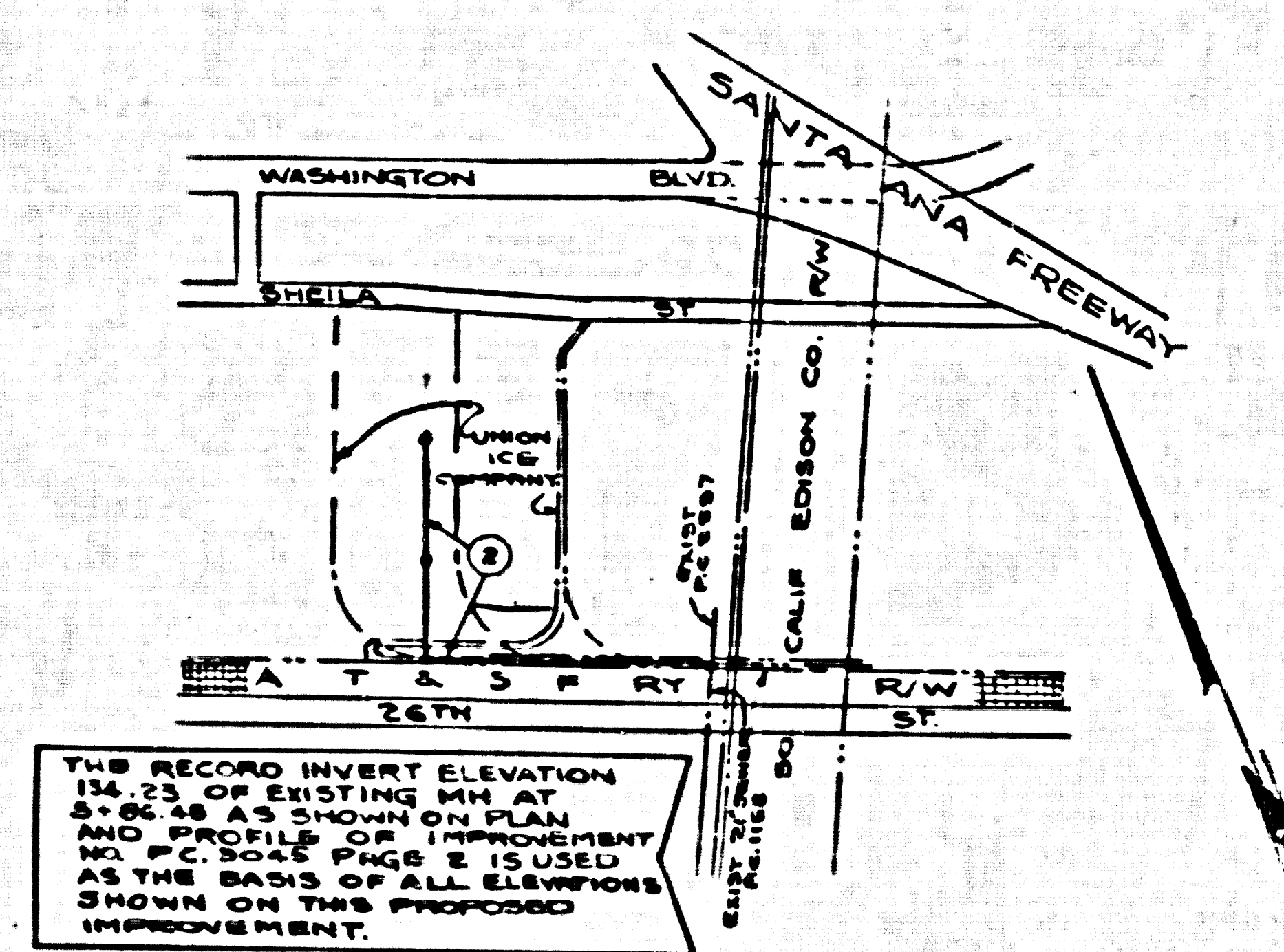
If work is to be done in a State Highway, a permit must be obtained from the State of California, Division of Highways, 120 South Spring Street.

COUNTY OF LOS ANGELES, CALIFORNIA

Approved, JOHN A. LAMBE County Engineer
 Approved, C.R. Compton
 Chief Eng. of SAN DIST. NO. 2
 By *L.H. Hughes*
 Checked by *W. Wade* 11-30-58
 Office of County Engineer, Reg. C.E. No. 9486
 Submitted *N.F. Brannan*
 SAN GABRIEL VALLEY REGIONAL ENGINEER

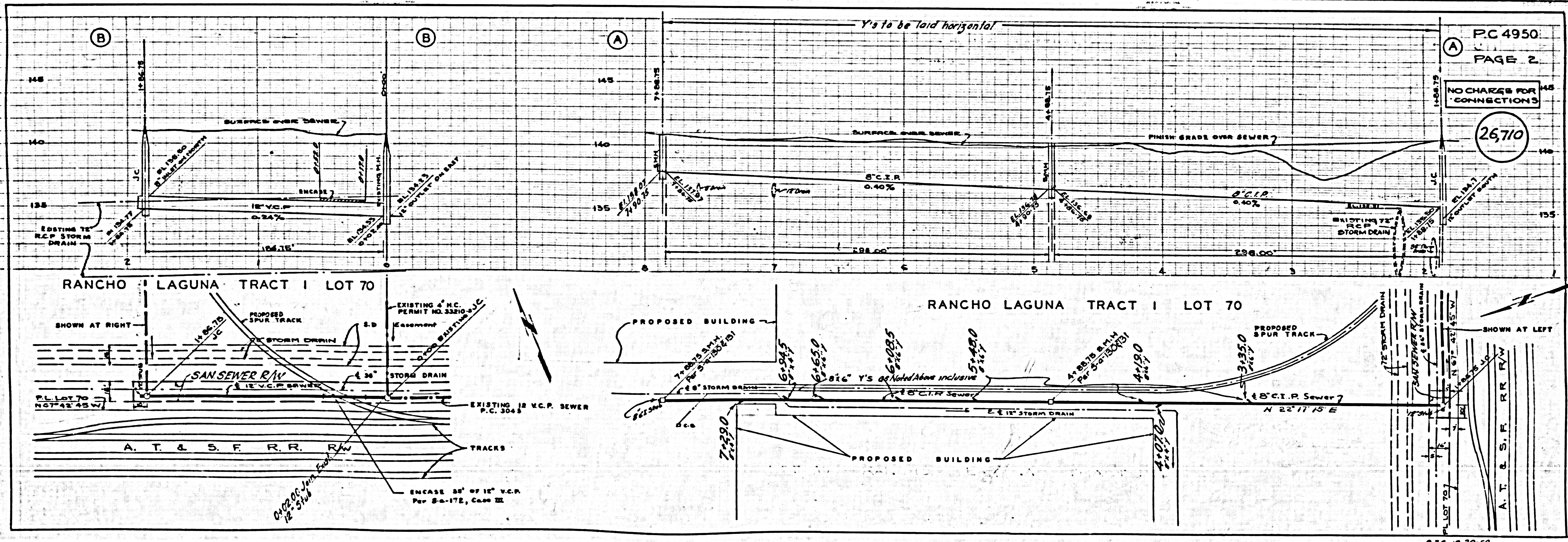
NO CHARGE FOR CONNECTIONS
Per Code 12-3-58

APPROVED
INDUSTRIAL WASTE DIVISION
BY: *Neil N. Colburn*



THIS RECORD INVERT ELEVATION IS BASED UPON THE RECORD INVERT ELEVATION OF EXISTING MANHOLE AT ST. 6+48 AS SHOWN ON PLAN AND PROFILE OF IMPROVEMENT. NO P.C. SCALE PAGE 2 IS USED AS THE BASIS OF ALL ELEVATIONS SHOWN ON THIS PROPOSED IMPROVEMENT.

INDEX MAP
SCALE 1"=500'
PC. 4950



PC 4950
PAGE 2

NO CHARGE FOR CONNECTIONS

26,710

S.J.C. 12-30-58