

B.M. 5Y 850 Elev. 144.621  
 Ct. spk. in E. curb of Wilma Ave. S' N. of curb return  
 at NE. corner of Wilma Ave. & Washington Blvd. (1955)

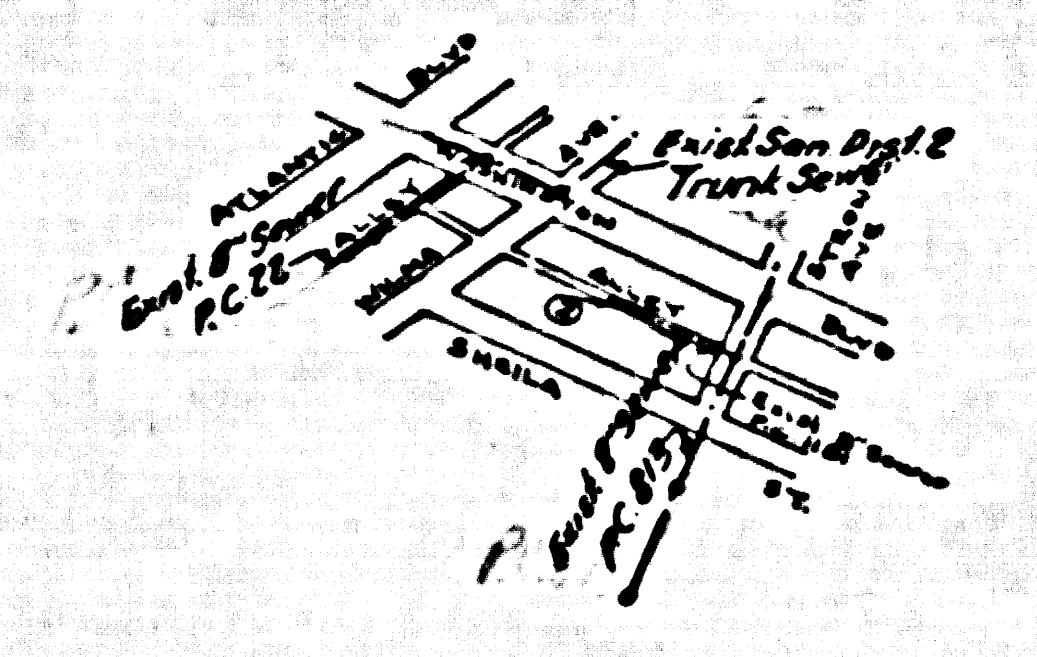
EAST LOS ANGELES BLDG. DIST. NO. G

PROFILE ALIGNMENT AND GRADE OF P.C. 4953  
 SANITARY SEWERS PAGE 1  
 TO BE CONSTRUCTED IN  
 ALLEY SOUTH OF WASHINGTON BLVD.

PRIVATE CONTRACT NO. 4953  
 W.S. 36  
 1 SHEET, 2 PAGES  
 SCALE: VERT. 1"=4' HORIZ. 1"=20' OCT. 1958  
 PREPARED IN THE OFFICES OF  
 OLSON SURVEYING SERVICE  
 BY W. H. Olson  
 REG. C. E. NO. 2122

26,546

- NOTES
1. PROVIDE STAKES ON THE PROPERTY LINE OR PROPERTY LINES PRODUCED AT RIGHT ANGLES TO THE SEWER LINE AT THE CENTER LINE OF EACH MANHOLE.
  2. NO REPRESENTATIVE OF THE COUNTY ENGINEER WILL SURVEY OR LAY OUT ANY PORTION OF THE WORK.
  3. THE OWNER OR HIS AUTHORIZED REPRESENTATIVE SHALL FURNISH THE COUNTY ENGINEER WITH GRADE SHEETS AND STATIONING FOR ALL HOUSE LATERALS AND Y BRANCHES AND SHALL PROVIDE STAKES FOR THEM AT THEIR PROPER LOCATIONS WITH 5" x 8" FISHING PLANK MARKERS. ANY CHANGE IN LOCATION SHALL BE REQUESTED BY WRITING BY THE OWNER OR HIS REPRESENTATIVE.
  4. THE PRIVATE ENGINEER SHALL FURNISH THE HOUSE LATERAL DEPTH AT THE PROPERTY LINE SHOWING THE GRADE OF THE CENTERLINE OF ALLEY FOR EACH HOUSE LATERAL ON THE GRADE SHEET.
  5. NO REVISIONS SHALL BE MADE IN THESE PLANS WITHOUT THE APPROVAL OF THE COUNTY ENGINEER.
  6. USE STANDARD MANHOLE FRAMES AND COVERS, 6-0" x 11", EXCEPT AS NOTED.
  7. USE STANDARD STRENGTH PIPE EXCEPT AS NOTED.
  8. USE CEMENT MORTAR OR "WEDGE-LOCK" OR "SPEED-SEAL" FOR ALL V.C.P. JOINTS PER S.P.C.S., SECT. 26 & 27.
  9. RESURFACE ALL TRENCH WITHIN PAVED AREA TO MEET L.A. COUNTY ROAD DEPT. OR CALIF. STATE HIGHWAY REQUIREMENTS IN ACCORDANCE WITH PERMITS.
  10. ENCASE FOUR FEET OF SEWER AT POINTS OF INTERFERENCE WITH POLES, CASE 11, S-0-172.
  11. HOUSE LATERALS TO BE CONSTRUCTED WITH INVERTS AT PROPERTY LINE 6" FEET BELOW THE GRADE OF THE CENTERLINE OF ALLEY.
  12. ALL STRUCTURES SHALL BE BRICK SEWER STRUCTURES, S-104, EXCEPT AS NOTED.
  13. FOR ALLOWABLE LEAKAGE TEST USE FORMULA NO. 1, S.P.C.S., SEC. 24.
  14. MANHOLE TOPS IN UNIMPROVED RIGHTS-OF-WAY TO BE SIX INCHES ABOVE FINISHED GRADE.
  15. THE CONTRACTOR SHALL NOTIFY THE CONSTRUCTION & SPERM DIVISION BY TELEPHONE, MADISON 9-2700, EXT. 342, AT LEAST TWENTY-FOUR HOURS BEFORE STARTING ANY WORK UNDER THIS CONTRACT.



INDEX MAP  
 Scale: 1"=600'  
 P.C. 4953

No CHARGE FOR CONNECTIONS  
W. H. Olson 10-3-58

NOTES

GRADES TO WHICH THIS IMPROVEMENT IS TO BE CONSTRUCTED ARE SHOWN ON PLANS AND PROFILE. GRADE POINTS FOR TOP OF CURB, CENTER LINE OF STREET, OR CENTER LINE OF ALLEYS ARE SHOWN BY CIRCLES ON PROFILE. AT ALL POINTS BETWEEN DESIGNATED POINTS THE GRADE SHALL BE ESTABLISHED SO AS TO CONFORM TO A STRAIGHT LINE DRAWN BETWEEN SAID DESIGNATED POINTS.

ELEVATIONS ARE IN FEET ABOVE U.S.C. & G.S. SEA LEVEL DATUM OF 1929.

THE DRAWING AND THE DATA HEREON ARE HEREBY MADE A PART OF THE SPECIFICATIONS.

WORK SHALL BE CONSTRUCTED ACCORDING TO SPECIFICATIONS ON FILE IN THE OFFICE OF THE COUNTY ENGINEER AND SHALL BE PROSECUTED ONLY IN THE PRESENCE OF THE COUNTY ENGINEER.

BEFORE WORK CAN BE STARTED, THE CONTRACTOR MUST OBTAIN A PERMIT TO EXCAVATE IN COUNTY STREETS FROM THE L.A. COUNTY ROAD DEPT., DISTRICT OFFICE NO. 66, AND MAKE A DEPOSIT WITH THE COUNTY ENGINEER, ROOM 254 PABR AMERICAN BUILDING, 330 SO. BRADWAY, SUFFICIENT TO COVER THE COST OF CONSTRUCTION INSPECTION AND RECORD PLANS.

APPROVAL OF THIS PLAN BY THE COUNTY OF LOS ANGELES DOES NOT CONSTITUTE A REPRESENTATION AS TO THE ACCURACY OF THE LOCATION OF OR THE EXISTENCE OR NON-EXISTENCE OF ANY UNDERGROUND UTILITY POLE OR STRUCTURE WITHIN THE LIMITS OF THIS PROJECT. THE BUYER ASSUMES ALL RISK.

IF WORK IS TO BE DONE IN A STATE HIGHWAY, A PERMIT MUST BE OBTAINED FROM THE STATE OF CALIFORNIA, DIVISION OF HIGHWAYS, 120 SOUTH SPRING STREET.

COUNTY OF LOS ANGELES, CALIFORNIA

APPROVED, JOHN A. LAMBE, COUNTY ENGINEER

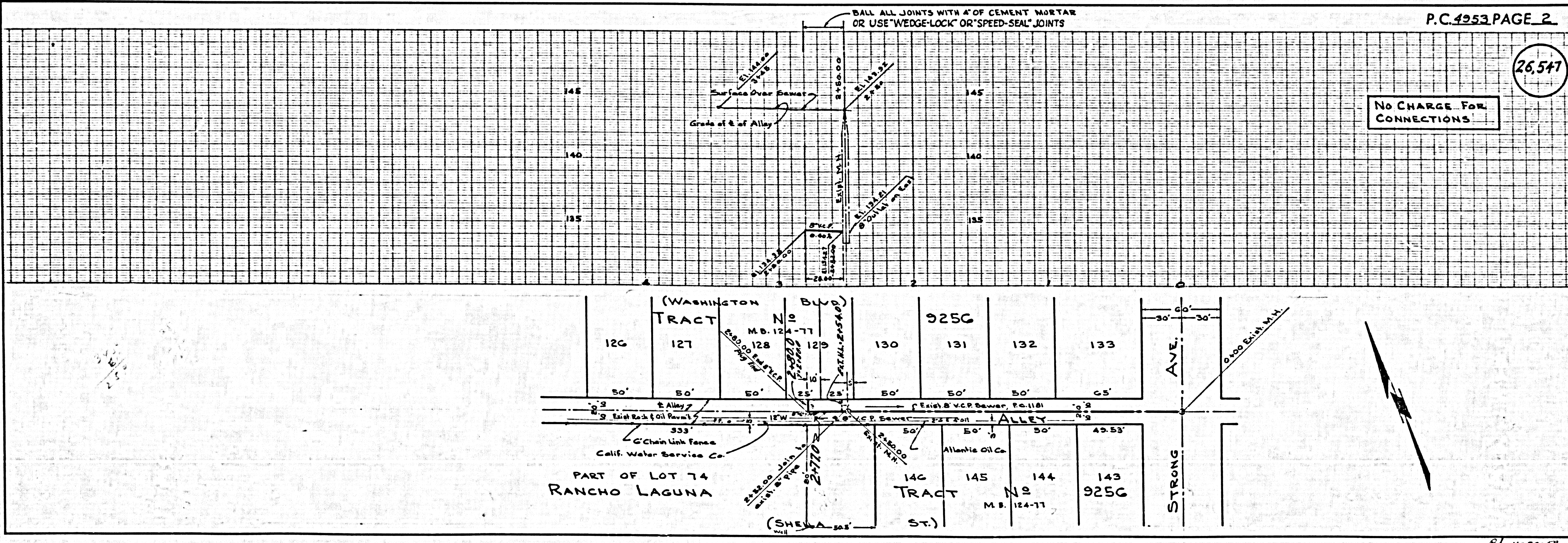
APPROVED, E. E. Conner, COUNTY ENGINEER

BY W. H. Olson SANITATION ENGINEER

CHECKED BY W. H. Olson OFFICE ENGINEER

OFFICE OF COUNTY ENGINEER, Rm. C. & E. NO. 2112

Submitted By N. F. Brumder  
 San Gabriel Valley Regional Engineer



P.C. 4953, PAGE 2

26,547

No CHARGE FOR CONNECTIONS

11-20-58