

BC 4823 CAPITAL PROJECT NO 214805 Page 1 of 4 Pages

TBM (I-35W) EL 2346.26 FB 2283-72
Fd. Lg. Bt. Spk. in PP#K4284Y at N.W. Cor
of Ave I & 55th St. W.

LANCASTER BUILDING DISTRICT NO. 8

PC NO. 4967
CAPITAL PROJECT NO. 9749.02

PROFILE, ALIGNMENT AND GRADE OF
SANITARY SEWERS
TO BE CONSTRUCTED FOR

29,689

MIRA LOMA T.B. SEGREGATION HOSPITAL AND RECALCITRANT UNIT

PAGE 1 OF 4 PAGES

SCALE: HORIZ. 1" = 40' VERT. 1" = 8' NOVEMBER, 1959

COUNTY OF LOS ANGELES, CALIFORNIA

JOHN A. LAMIE COUNTY ENGINEER

SUBMITTED *C.E. PITCHES*
ASSISTANT SANITATION ENGINEER

APPROVED *C.R. Compton*
SANITATION ENGINEER

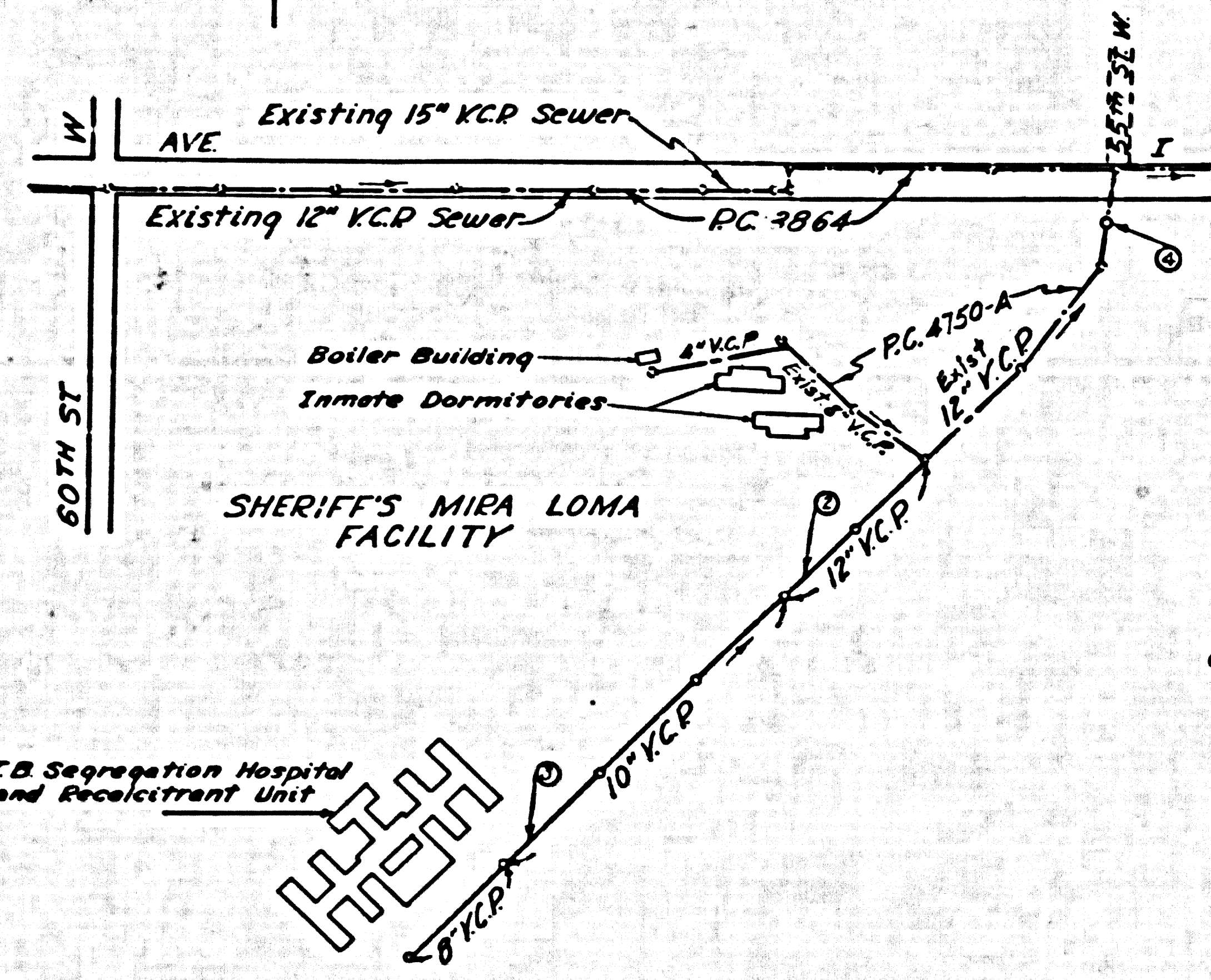
PETER J. PITCHES
SANITARY, L.A. COUNTY
BY *C.W. Lee*

C. R. COMPTON
COUNTY ENGINEER OF COUNTY
SANITATION DISTRICT NO. 14
BY *C.W. Lee*
OFFICE ENGINEER

FOR LEGEND
SEE PLAN NO. S-A-44

NOTE: GRADES TO WHICH THIS IMPROVEMENT IS TO BE CONSTRUCTED ARE SHOWN ON PLANS AND PROFILES. GRADE POINTS FOR TOP OF CURB, CENTER LINE OF STREET OR CENTER LINE OF ALLEY ARE SHOWN BY CIRCLES ON PROFILES. AT ALL POINTS BETWEEN DESIGNATED POINTS THE GRADE SHALL BE ESTABLISHED SO AS TO CONFORM TO A GRADE LINE DRAWN BETWEEN SAID DESIGNATED POINTS.
ELEVATIONS ARE IN FEET ABOVE U.S.C. & G.S. SEA LEVEL BATHY AS OF 1929
UNIT PRICES FOR ADDITIONAL WORK WHICH MAY BE REQUIRED BUT WHICH CANNOT BE ASCERTAINED IN ADVANCE, SHALL BE SUBMITTED IN THE PROPOSAL.
THIS DRAWING AND THE DATA HEREON ARE HEREBY MADE A PART OF THE SPECIFICATIONS.

REFERENCES		
W. S. 71 C-4	DESIGNED	TEN
A. B. 3203-14	TRACED	TEN
F. B.	CHECKED	SCHAFFER
		Nor 1959
		Nor 1959
		JAN. 1960

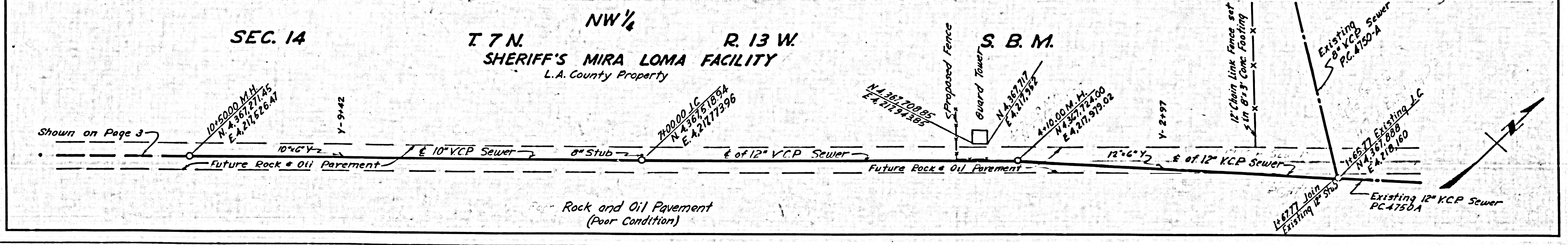
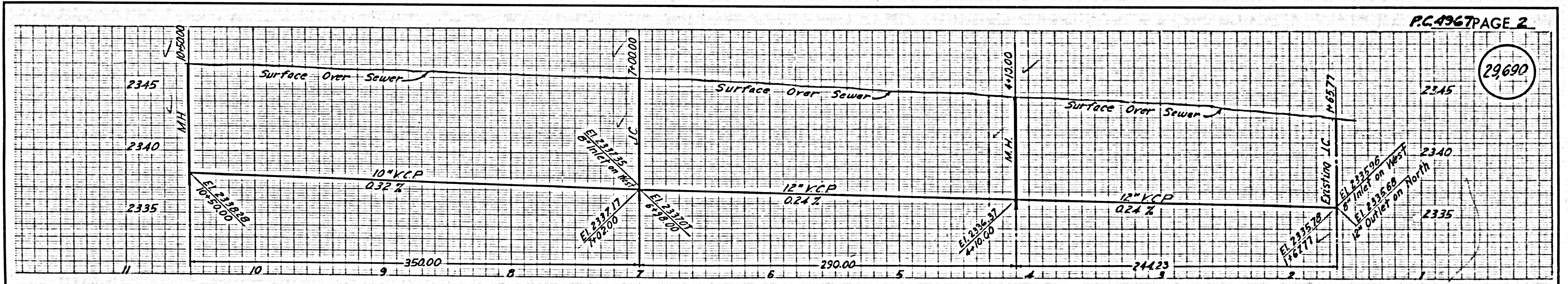


Index Map
Scale: 1" = 400'
PC No. 4967
Capital Project No. 974902

- USE STANDARD STRENGTH PIPE EXCEPT AS NOTED.
- USE CEMENT MORTAR OR "WEDGE LOCK" OR "SPEED SEAL" FOR ALL V.C.P. JOINT PER SPEC. SEC. 28 & 48.
- ALL STRUCTURES SHALL BE BRICK SEWER STRUCTURES AS PER PLAN NO. S-A-104, EXCEPT AS NOTED.
- USE STANDARD MANHOLE FRAMES AND COVERS AS PER PLAN NO. S-A-117, EXCEPT AS NOTED.
- RESURFACE TRENCH WITHIN PAVED AREA WITH PRECAST ROCK AND ONE INCHES IN THICKNESS EXCEPT AS NOTED.
- USE FORMULA NO. 1 SEC. 54 OF SPECIFICATIONS TO COMPUTE ALLOWABLE LEAKAGE.
- THE CONTRACTOR SHALL NOTIFY THE DESIGN AND STORM DRAIN DIVISION BY TELEPHONE MADISON 9-4747, EXT. 362 AT LEAST 24 HOURS BEFORE STARTING ANY WORK UNDER THIS CONTRACT.
- CONSTRUCT HOUSE LATERALS WITH INVERTS AT PROPERTY LINE.
- 6 FEET BELOW CURB GRADE, OR GRADE OF CENTER LINE OF STREET EXCEPT AS NOTED.

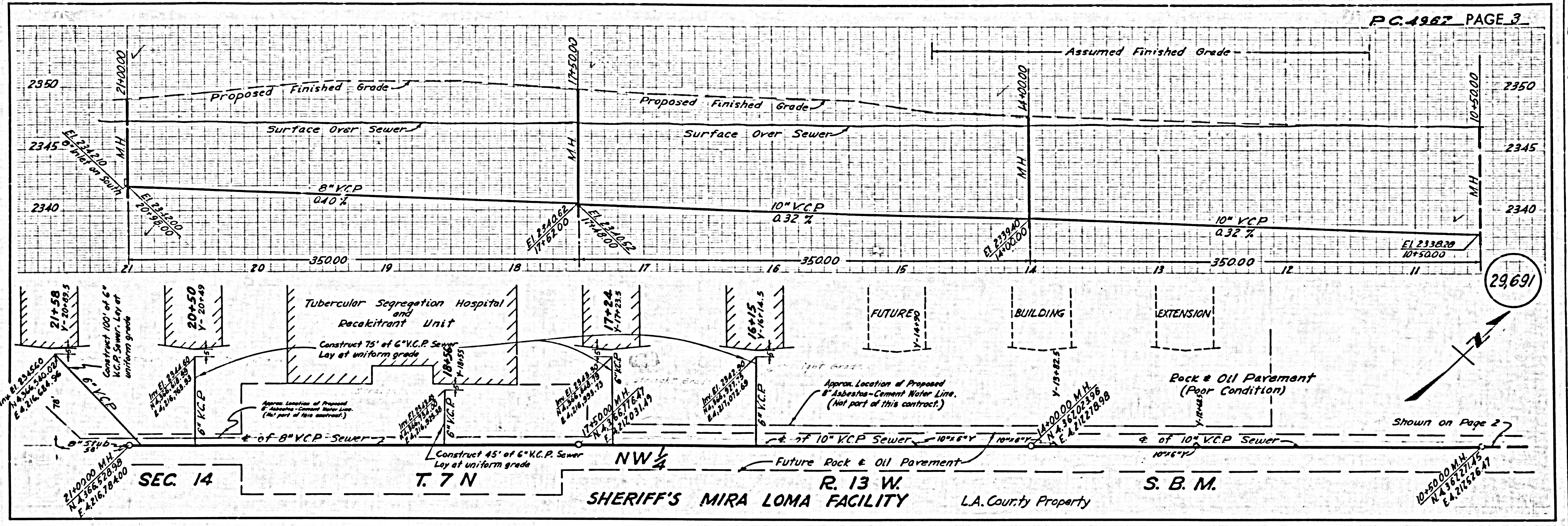
- FIGURES IN CIRCLES AT ENDS OF HOUSE LATERALS INDICATE DEPTH BELOW CURB GRADE, OR GRADE OF CENTER LINE OF STREET.
- FIGURES IN CIRCLES AT ENDS OF HOUSE LATERALS INDICATE HOUSE LATERALS SHALL BE CONSTRUCTED WITH 1/2" RISE PER FOOT TO PROPERTY LINE.
- WORDS IN CIRCLES AT ENDS OF HOUSE LATERALS INDICATE THEY SHALL BE SAID HORIZONTAL AND HOUSE LATERALS SHALL BE CONSTRUCTED WITH 1/2" RISE PER FOOT TO PROPERTY LINE.
- CONSTRUCTION IN STATE HIGHWAYS SHALL CONFORM WITH STATE HIGHWAY PERMITS.

Approval of this plan by the County of Los Angeles does not constitute a representation as to the accuracy of the location or existence or non-existence of any underground utility pipe or structure within the limits of this project. This note applies to all sheets.

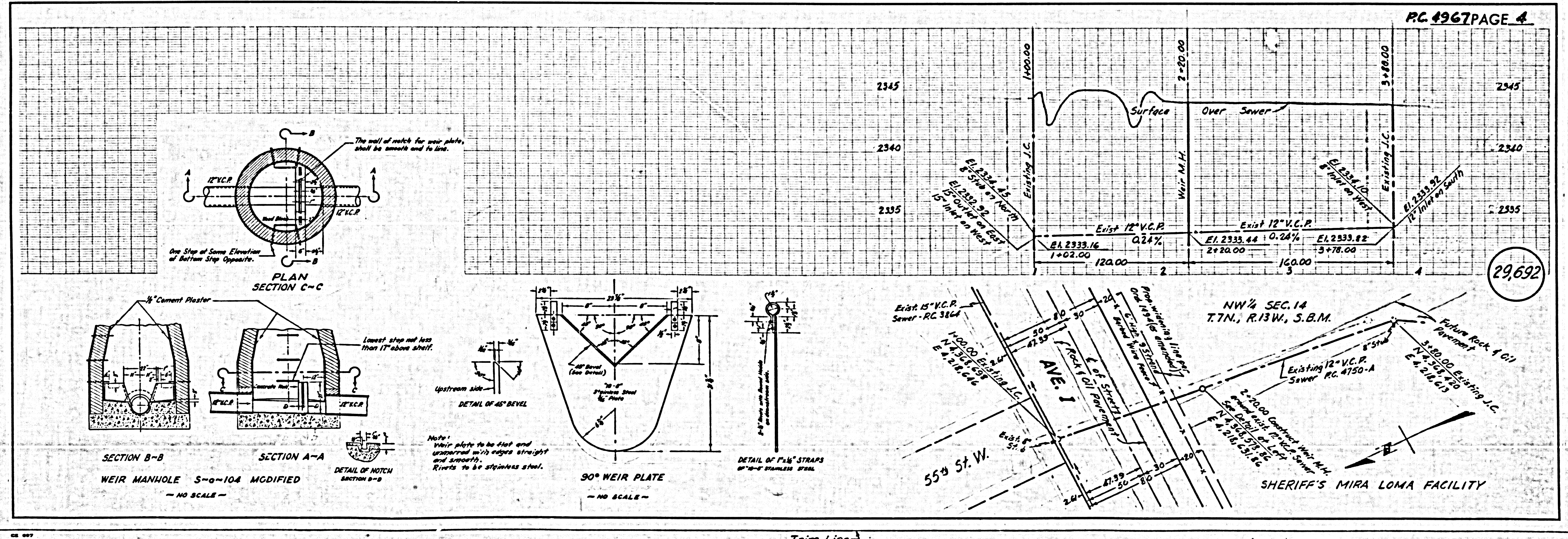


U.S. CHK'D
R.M.S. CHK'D 3-7-66 MD

BC 4823 CAPITAL PROJECT NO 214805 Page 1 of 4 Pages



J.G. CHK'D
E.M.S. CHK'D 3-7-60 NVD



Top of X-Section - PC. 4750-A J.G. CHK'D
E.M.S. CHK'D 3-7-60 NVD

Trim Line

PC 4967 CAPILAT PROTECT NO 214305 Pades 214305 Pades

PC 4967 CAPILAT PROTECT NO 214305 Pades 214305 Pades

Trim Line