

**SAN DIMAS BLDG. DIST. NO. 10**

PROFILE ALIGNMENT AND GRADE OF **P.C. 4972**  
**SANITARY SEWERS** PAGE **1**  
 TO BE CONSTRUCTED IN

**TRACT N° 24659** (26,562)

**PRIVATE CONTRACT NO. 4972.**

W.S. 48  
 1 SHEET, 2 PAGES

SCALE: VERT. 1" = 4' HORIZ. 1" = 40'  
 NOV, 1958

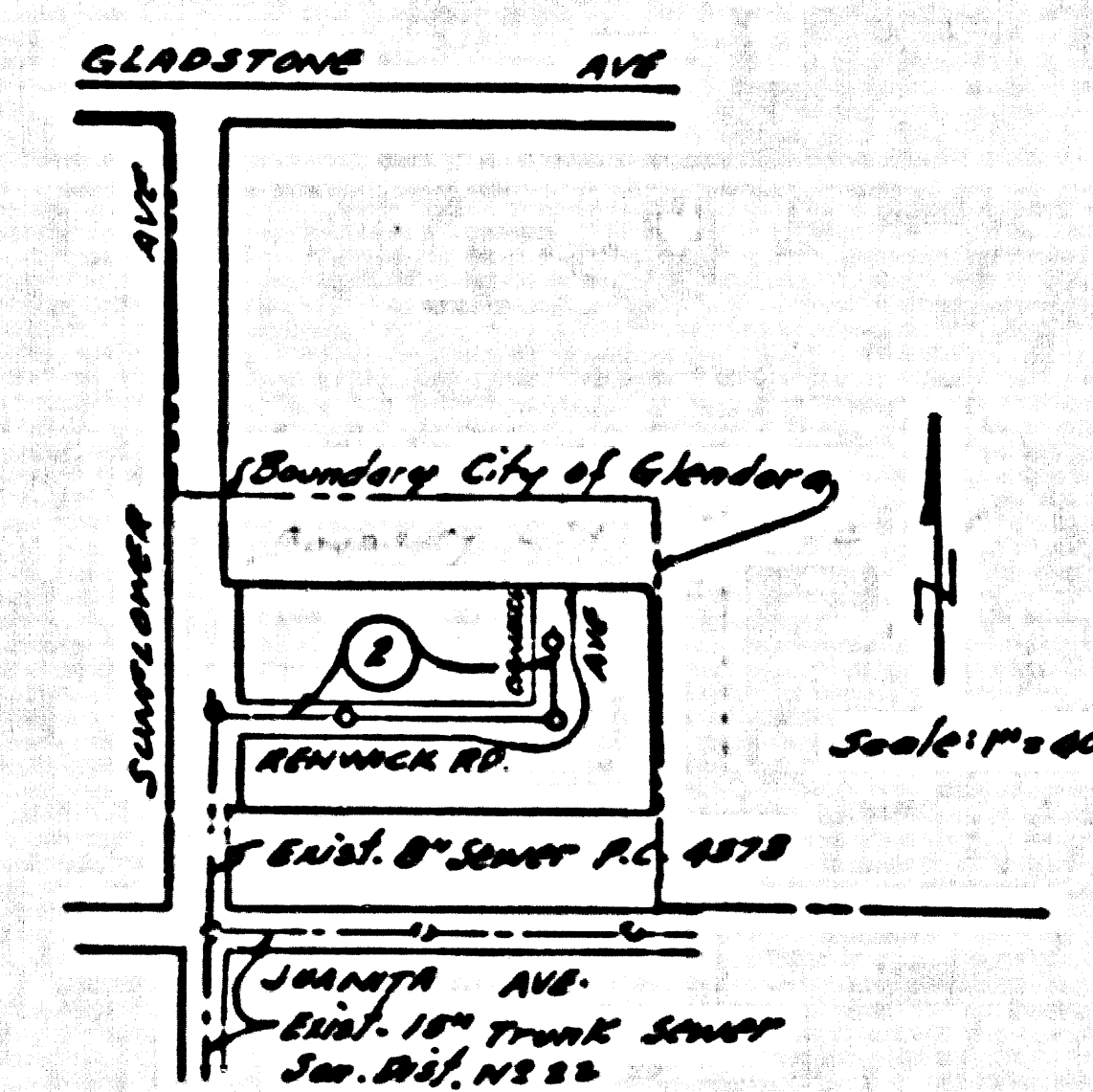
PREPARED IN THE OFFICES OF  
**L. FREDRICK PACK**

By *L. Fredrick Pack*  
 REG. C. E. NO. 2465

FOR LEGEND SEE PLAN NO. S-A-04

- NOTES:
- PROVIDE STAKES ON THE PROPERTY LINE OR PROPERTY LINES PRODUCED AT RIGHT ANGLES TO THE SEWER LINE AT THE CENTER LINE OF EACH MANHOLE.
  - NO REPRESENTATIVE OF THE COUNTY ENGINEER WILL BE PRESENT TO LAY OUT ANY PORTION OF THE WORK.
  - THE OWNER OR HIS AUTHORIZED REPRESENTATIVE SHALL FURNISH THE COUNTY ENGINEER WITH GRADE SHEETS AND STATIONING FOR ALL HOUSE LATERALS AND MAIN LINES AND SHALL PROVIDE STAKES FOR THEM AT THE PROPOSED LOCATIONS WITH STATIONING PROMINENTLY MARKED. ANY CHANGE IN LOCATION SHALL BE REQUESTED IN WRITING BY THE OWNER OR HIS REPRESENTATIVE.
  - THE PRIVATE ENGINEER SHALL FURNISH THE HOLY LATERAL SERVICE AT THE PROPERTY LINE BELOW THE TOP OF CURB ELEVATION FOR EACH HOUSE LATERAL ON THE GRADE SHEET.
  - NO REVISIONS SHALL BE MADE IN THESE PLANS WITHOUT THE APPROVAL OF THE COUNTY ENGINEER.
  - USE STANDARD MANHOLE FRAMES AND COVERS, S-117, EXCEPT AS NOTED.
  - USE STANDARD STRENGTH PIPE EXCEPT AS NOTED.
  - USE CHAINE MORTAR OR "WEDGE LOCK" OR "SPED-LOC" FOR ALL V.C.P. JOINTS PER SPEC., SECS. 26 & 27.
  - RESURFACE ALL TRENCH WITHIN PAVED AREA TO MEET L.A. COUNTY ROAD DEPT. OR CALIF. STATE HIGHWAY DEPARTMENT'S IN ACCORDANCE WITH PERMITS.
  - INDICATE FOUR FEET OF SEWER AT POINTS OF INTERFERENCE WITH POLES, CASE IN, S-117E.
  - ALL LATERALS TO BE CONSTRUCTED WITH INVERTS AT PROPERTY LINE  $\dots$  FEET BELOW CURB GRADE EXCEPT AS NOTED.
  - ALL STRUCTURES SHALL BE BRICK SEWER STRUCTURES, S-104, EXCEPT AS NOTED.
  - FOR FLOODABLE LEAKAGE TEST USE FORMULA NO. 1, SPEC., SEC. 24.
  - MANHOLE SOPS IN IMPROVED RIGHTS-OF-WAY TO BE SIX INCHES ABOVE FINISHED GRADE.
  - THE CONTRACTOR SHALL NOTIFY THE CONSTRUCTION & STORM DRAIN DIVISION BY TELEPHONE, MARSHON 9-26, EXT. 342, AT LEAST TWENTY-FOUR HOURS BEFORE STARTING ANY WORK UNDER THIS CONTRACT.

B.M. S.G. 25 El. 792.135 L. & T. near  
 E. end of Sunflower Ave on  
 North curb of Gladstone Ave



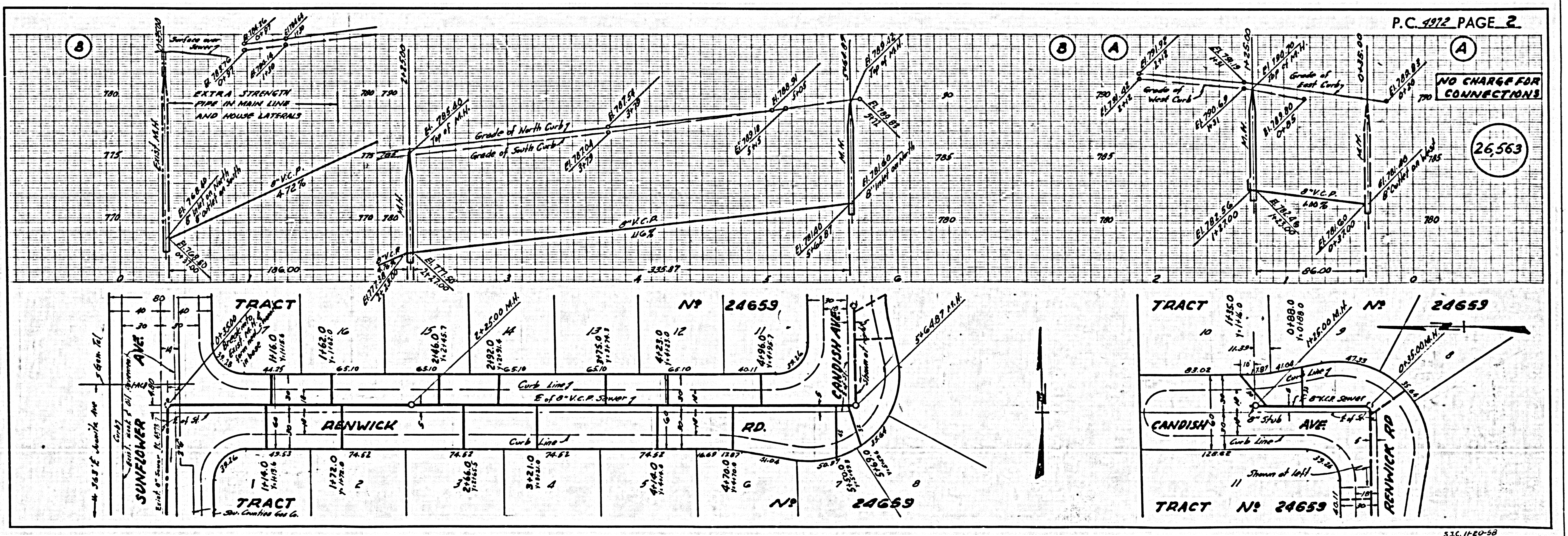
INDEX MAP  
 TRACT N° 24659  
 P.C. 4972

**NO CHARGE FOR CONNECTIONS**  
*L. Fredrick Pack*  
 11-21-58

NOTES:  
 GRADES TO WHICH THE IMPROVEMENT IS TO BE CONSTRUCTED ARE SHOWN ON PLANS AND PROFILE. GRADE POINTS FOR TOP OF CURBS, CENTER LINE OF STREETS, OR CENTER LINE OF ALLEYS ARE SHOWN BY CIRCLES ON PROFILES. AT ALL POINTS BETWEEN DESIGNATED POINTS THE GRADE SHALL BE ESTABLISHED SO AS TO CONFORM TO A STRAIGHT LINE DRAWN BETWEEN SAID DESIGNATED POINTS.  
 ELEVATIONS ARE IN FEET ABOVE U.S.C. & G.S. MEAN DATUM OF 1929.  
 THIS DRAWING AND THE DATA HEREON ARE HEREBY MADE A PART OF THE SPECIFICATIONS.  
 WORK SHALL BE COMPLETED ACCORDING TO SPECIFICATIONS ON FILE IN THE OFFICE OF THE COUNTY ENGINEER AND SHALL BE PROSECUTED ONLY IN THE PRESENCE OF THE COUNTY ENGINEER.  
 BEFORE WORK CAN BE STARTED, THE CONTRACTOR MUST OBTAIN A PERMIT TO EXCAVATE IN COUNTY STREETS FROM THE L.A. COUNTY ROAD DEPT., DISTRICT OFFICE, INC. AND MAKE A REPORT WITH THE COUNTY ENGINEER, ROOM 204 PAM AMERICAN BUILDING, 128 SO. BROADWAY SUBJECT TO COVER THE COST OF CONSTRUCTION INSPECTION AND RECORD PLANS.  
 APPROVAL OF THIS PLAN BY THE COUNTY OF LOS ANGELES DOES NOT CONSTITUTE A REPRESENTATION AS TO THE ACCURACY OF THE LOCATION OF OR THE EXISTENCE OR NON-EXISTENCE OF ANY UNDERGROUND UTILITY PIPE, OR STRUCTURE WITHIN THE LIMITS OF THIS PROJECT. THIS NOTE APPLIES TO ALL PAGES.  
 IF WORK IS TO BE DONE IN A STATE HIGHWAY, A PERMIT MUST BE OBTAINED FROM THE STATE OF CALIFORNIA, DIVISION OF HIGHWAYS, 128 SOUTH SPRING STREET.

COUNTY OF LOS ANGELES, CALIFORNIA

APPROVED, JOHN A. LAMBE, COUNTY ENGINEER  
 APPROVED, A. M. BAWN, CHIEF ENGINEER  
 BY *L. Fredrick Pack* (LAWYER) BY *A. M. Bawn* (ENGINEER)  
 CHECKED BY *S. C. Davis*  
 OFFICE OF COUNTY ENGINEER, BLDG. C & NO. 2465



P.C. 4972 PAGE 2

**NO CHARGE FOR CONNECTIONS**

(26,563)

TRACT N° 24659

TRACT N° 24659

S.C. 11-20-58