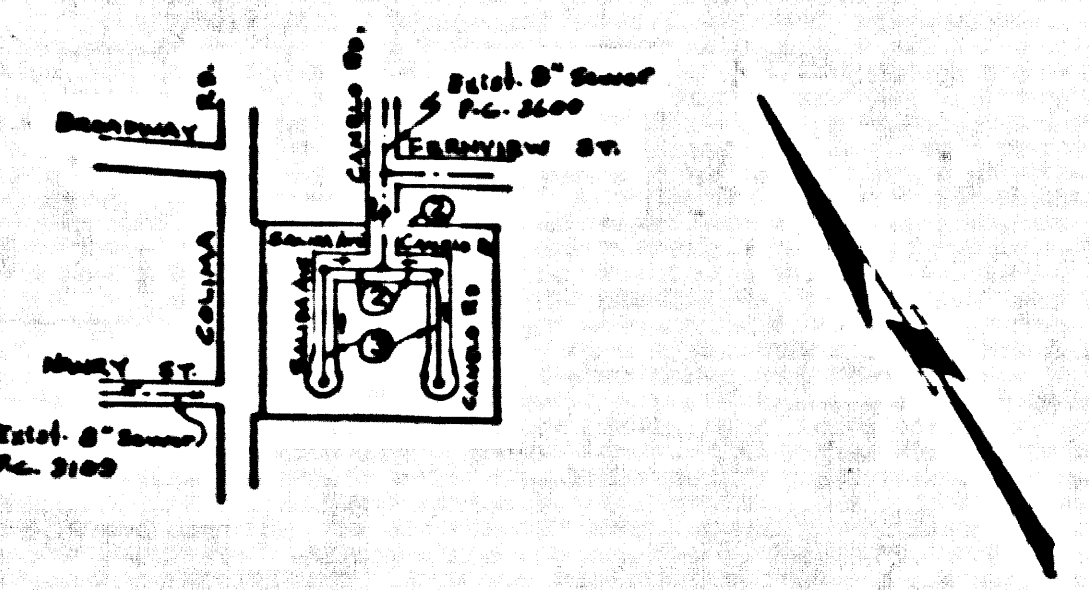


BM. 51 1230 Elev. 215.289
 L & T. in N.E. Cor. cen. walk 720' W. of & Colima Rd 345' S.
 & Broadway. House No 10901 on Colima Rd (Santa Fe Quad) 1055



INDEX MAP
 Scale: 1"=600'
 TRACT No. 24557
 P.C. 4975

WHITTIER BLDG. DIST. NO. 11

- NOTES
1. PROVIDE STAKES ON THE PROPERTY LINE OR PROPERTY LINES PERPENDICULAR AT RIGHT ANGLES TO THE SEWER LINE AT THE CENTER LINE OF EACH MANHOLE.
 2. NO REPRESENTATIVE OF THE COUNTY ENGINEER WILL SUPERVISE OR TAKE CARE ANY PORTION OF THE WORK.
 3. THE OWNER OR HIS AUTHORIZED REPRESENTATIVE SHALL FURNISH THE COUNTY ENGINEER WITH GRADE SHEETS AND STATIONING FOR ALL HOUSE LATERALS AND Y BRANCHES AND SHALL PROVIDE STAKES FOR THEM AT THEIR PROPER LOCATIONS WITH STATIONING PLAINLY MARKED. ANY CHANGE IN LOCATION SHALL BE EQUALIZED BY NOTIFYING THE OWNER OR HIS REPRESENTATIVE.
 4. THE PRIVATE ENGINEER SHALL FURNISH THE HOUSE LATERAL BIRTH AT THE PROPERTY LINE BELOW THE TOP OF CURB ELEVATION FOR EACH HOUSE LATERAL ON THE GRADE SHEET.
 5. NO REVISIONS SHALL BE MADE IN THESE PLANS WITHOUT THE APPROVAL OF THE COUNTY ENGINEER.
 6. USE STANDARD MANHOLE FRAMES AND COVERS, 6-117.
 7. USE STANDARD STRENGTH PIPE.
 8. USE CEMENT MORTAR OR "WEDGE-LOCK" OR "SPRUE-SEAL" FOR ALL V.C.P. JOINTS PER SPEC. SECS. 20 & 8.
 9. RESURFACE ALL TRENCH WITHIN PAVED AREA TO MEET L.A. COUNTY ROAD DEPT. OR CALIF. STATE HIGHWAY REQUIREMENTS IN ACCORDANCE WITH PERMITS.
 10. ENCASE FOUR FEET OF SEWER AT POINTS OF INTERFERENCE WITH POLES. (L&M III, 8-172).
 11. HOUSE LATERALS TO BE CONSTRUCTED WITH INVERTS AT PROPERTY LINE $\frac{1}{2}$ FEET BELOW CURB GRADE.
 12. ALL STRUCTURES SHALL BE BRICK SEWER STRUCTURES, 6-114.
 13. FOR ALLOWABLE LEAKAGE TEST USE FORMULA NO. 2, SPEC. SEC. 54.
 14. MANHOLE TOPS IN UNAPPROVED RIGHTS-OF-WAY TO BE SIX INCHES ABOVE FINISHED GRADE.
 15. THE CONTRACTOR SHALL NOTIFY THE CONSTRUCTION & STORM DRAIN DIVISION BY TELEPHONE, MADISON 9-6700, EXT. 345, AT LEAST TWENTY-FOUR HOURS BEFORE STARTING ANY WORK UNDER THIS CONTRACT.

NO CHARGE FOR CONNECTIONS
E. Mueller 11-28-58

PROFILE ALIGNMENT AND GRADE OF **P.C. 4975**
SANITARY SEWERS PAGE 1
 TO BE CONSTRUCTED IN

TRACT No 24557 (26,969)

PRIVATE CONTRACT NO. 4975

W.S. 34
 2 SHEETS, 3 PAGES

SCALE: VERT. $\frac{1}{2}$ "=1' HORIZ. $\frac{1}{4}$ "=1' OCT. 1958

PREPARED IN THE OFFICE OF
OLSON SURVEYING SERVICE

By: *Carl Olson*
 REG. C. E. NO. 12222

FOR LEGEND SEE PLAN NO. S-A-64

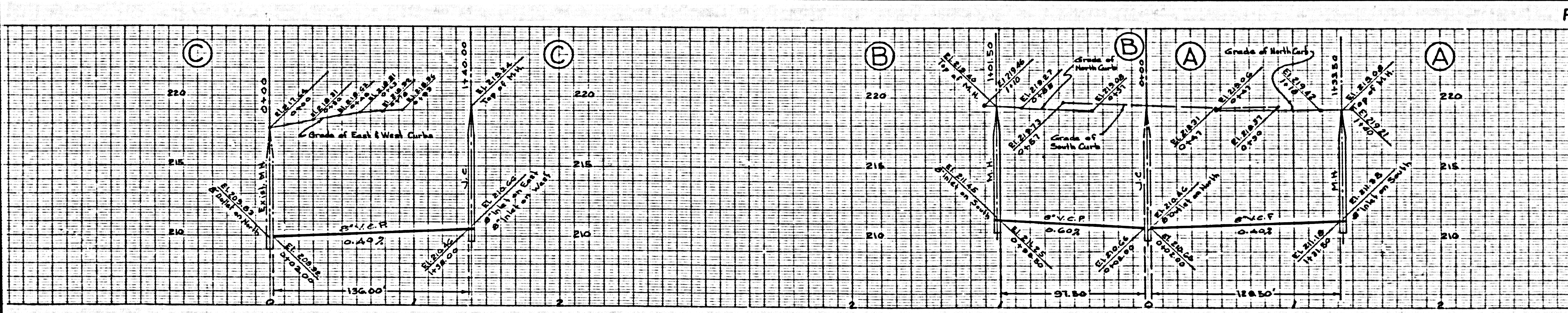
NOTE
 GRADES TO WHICH THIS IMPROVEMENT IS TO BE CONSTRUCTED ARE SHOWN ON PLANS AND PROFILES. GRADE POINTS FOR TOP OF CURBS, CENTER LINE OF STREETS, OR CENTER LINE OF ALLEYS ARE SHOWN BY CIRCLES ON PROFILES. AT ALL POINTS BETWEEN INDICATED POINTS THE GRADE SHALL BE ESTABLISHED SO AS TO CONFORM TO A STRAIGHT LINE DRAWN BETWEEN SAID DESIGNATED POINTS.
 ELEVATIONS ARE IN FEET ABOVE U.S.C. & G.S. SEA LEVEL DATUM OF 1929.
 THIS DRAWING AND THE DATA HEREON ARE HEREBY MADE A PART OF THE SPECIFICATIONS.
 BEFORE WORK CAN BE STARTED, THE CONTRACTOR MUST OBTAIN A PERMIT TO EXCAVATE IN THE COUNTY STREETS AND SHALL BE PROSECUTED ONLY IN THE PRESENCE OF THE COUNTY ENGINEER.
 BEFORE WORK CAN BE STARTED, THE CONTRACTOR MUST DEPOSIT WITH THE COUNTY ENGINEER, ROOM 324 PAM AMERICAN BUILDING, 225 SO. BROADWAY, SAN FRANCISCO, THE COST OF CONTINUING INSPECTION AND RECORD PLANS.
 APPROVAL OF THIS PLAN BY THE COUNTY OF LOS ANGELES DOES NOT CONSTITUTE A REPRESENTATION AS TO THE ACCURACY OF THE LOCATION OR OF THE EXISTENCE OR NON-EXISTENCE OF ANY UNDERGROUND UTILITY PIPE, OR STRUCTURE WITHIN THE LIMITS OF THE PROJECT. THIS NOTE APPLIES TO ALL PAGES.
 IF WORK IS TO BE DONE IN A STATE HIGHWAY, A PERMIT MUST BE OBTAINED FROM THE STATE OF CALIFORNIA, DIVISION OF HIGHWAYS, 120 SOUTH SPRING STREET.

COUNTY OF LOS ANGELES, CALIFORNIA

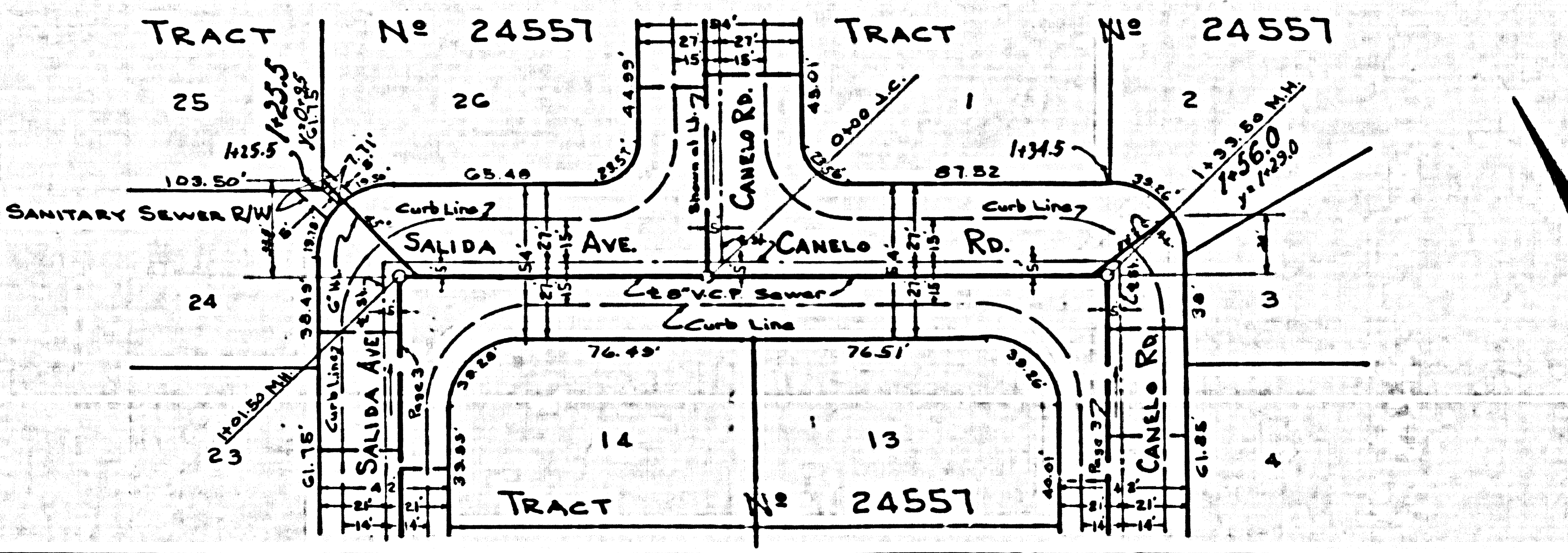
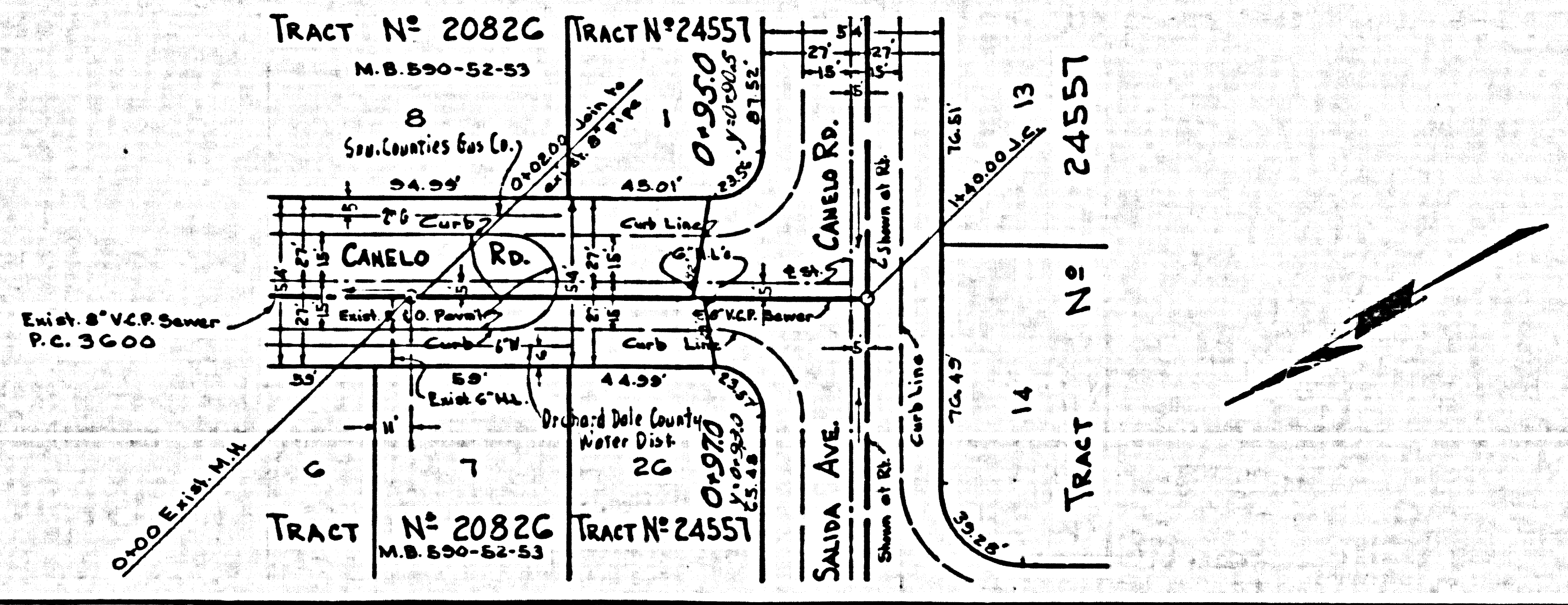
APPROVED, JOHN A. LAMBE, COUNTY ENGINEER
 APPROVED, E. POMPTON, CHIEF ENGINEER
 CO. SAN. DIV. NO. 1A
 BY: *John A. Lambe* BY: *E. Pompton*
 SANITATION ENGINEER CHIEF ENGINEER
 CHECKED BY: *James K. Onda*
 OFFICE OF COUNTY ENGINEER, P.C. 4975

Submitted By: *John L. Esten* 12-22-58
 Leo C. Lee Regional Engineer, Reg. C.E. No. 3871

P.C. 4975, PAGE 2



NO CHARGE FOR CONNECTIONS



S7C 12-23-58

