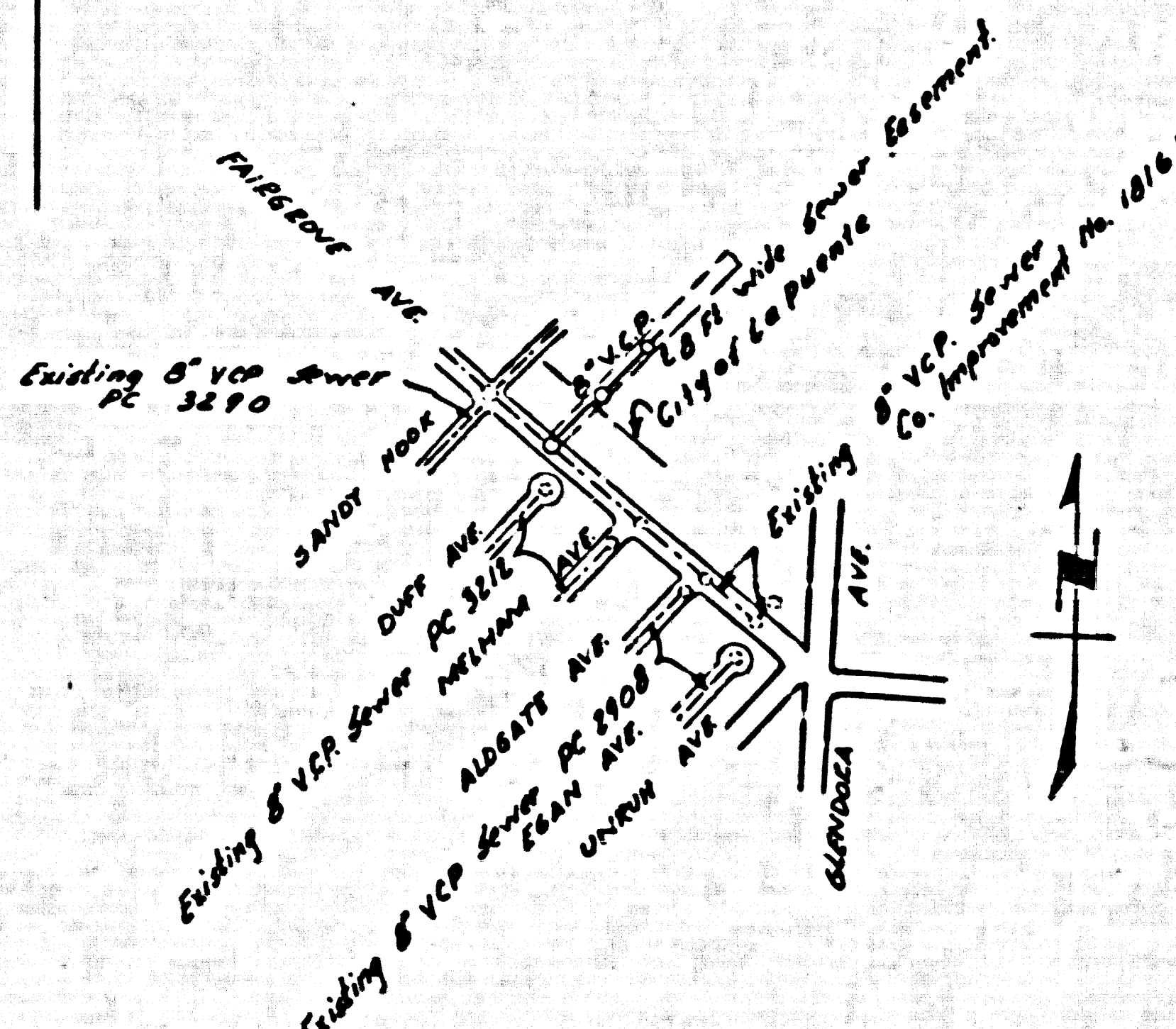


BM AZ93A Elev 330.006 F.B. 1926 Pg. 50B
 Fairgrove Avenue and Sandy Hook SW corner
 Bond spike 5' west of Mend curb return. (Mend. AZ93)



INDEX MAP
 Scale: 1" = 600'
 P.C. 4983

CONNECTION CHARGES
 AS INDICATED
L. Custer 2-16-58

PUENTE BLDG. DIST. NO. 2

- NOTES:
1. PROFILE STARTS ON THE PROPERTY LINE OR PROPERTY LINES PRODUCED AT RIGHT ANGLES TO THE SEWER LINE AT THE CENTER LINE OF EACH MANHOLE.
 2. NO REPRESENTATIVE OF THE COUNTY ENGINEER WILL SURVEY OR LAY OUT ANY PORTION OF THE WORK.
 3. THE OWNER OR HIS AUTHORIZED REPRESENTATIVE SHALL FURNISH THE COUNTY ENGINEER WITH GRADE SHEETS AND STATIONINGS FOR ALL HOUSE LATERALS AND Y BRANCHES AND SHALL PROVIDE EASES FOR THESE AT THEIR PROPER LOCATIONS WITH STATIONING PLANNET MARKS. ANY CHANGE IN LOCATION SHALL BE REQUESTED IN WRITING BY THE OWNER OR HIS REPRESENTATIVE.
 4. NO REVISIONS SHALL BE MADE IN THESE PLANS WITHOUT THE APPROVAL OF THE COUNTY ENGINEER.
 5. USE STANDARD MANHOLE FRAMES AND COVERS, 8-117, EXCEPT AS NOTED.
 6. USE STANDARD EIGHTHOLE PIPE EXCEPT AS NOTED.
 7. USE CEMENT MORTAR OR "WOOD JOCK" OR "SPIDER-BEAM" FOR ALL V.C.P. JOINTS PER SPCC'S, SECS. 26 & 27.
 8. RESURFACE ALL TRENCH WITHIN PAVED AREA TO MEET L.A. COUNTY ROAD DEPT. OR CALIF. STATE HIGHWAY REQUIREMENTS IN ACCORDANCE WITH PERMITS.
 9. INCASE FOUR FEET OF SEWER AT POINTS OF INTERFERENCE WITH POLES, CASE III, 8-172.
 10. ALL STRUCTURES SHALL BE BRICK SEWER STRUCTURES, 8-194, EXCEPT AS NOTED.
 11. FOR ALLOWABLE LEAKAGE TEST USE FORMULA NO. 1, SPCC'S, SEC. 54.
 12. MANHOLE TOPS IN UNIMPROVED RIGHTS-OF-WAY TO BE 6" INCHES ABOVE FINISHED GRADE.
 13. THE CONTRACTOR SHALL NOTIFY THE CONSTRUCTION & STORM DRAIN DIVISION BY TELEPHONE, MARSHEN 9-4707, EXT. 241, AT LEAST TWENTY-FOUR HOURS BEFORE STARTING ANY WORK UNDER THIS CONTRACT.

PROFILE ALIGNMENT AND GRADE OF P.C. 4983
 SANITARY SEWERS PAGE 1

TO BE CONSTRUCTED IN
**FAIRGROVE AVENUE &
 A SEWER RIGHT OF WAY**
 PRIVATE CONTRACT NO. 4983

W.S. 38
 1 SHEET, 2 PAGES
 SCALE: HORIZ. 1" = 40' VERT. 1" = 4'
 NOV. 21, 1958
 PREPARED IN THE OFFICES OF

26,785

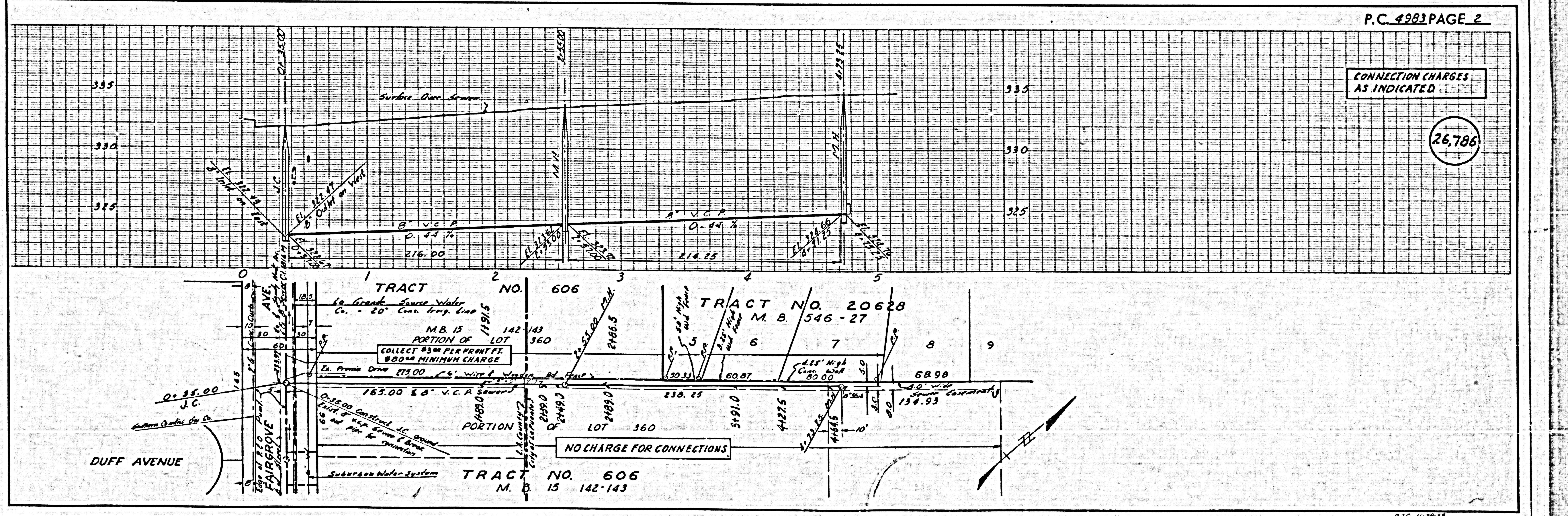
BY: *Charles A. Thompson*
 CIVIL ENGINEER
 FOR LEGEND SEE PLAN NO. S-A-64

NOTE:
 GRADES TO WHICH THIS IMPROVEMENT IS TO BE CONNECTED ARE SHOWN ON PLANS AND PROFILE. GRADE POINTS FOR 800 OR CUBIC FEET OF CURBS, CENTER LINE OF STREETS, OR CENTER LINE OF ALLEYS ARE SHOWN BY CIRCLES ON PROFILES. AT ALL POINTS BETWEEN INDICATED POINTS THE GRADE SHALL BE ESTABLISHED SO AS TO CONFORM TO A STRAIGHT LINE BETWEEN SAID INDICATED POINTS.
 ELEVATIONS ARE IN FEET ABOVE M.T.C. & S.S. SEA LEVEL DATUM OF 1929.
 THE DRAWING AND THE DATA HEREON ARE HEREBY MADE A PART OF THE SPECIFICATIONS. THE CONTRACTOR SHALL BE RESPONSIBLE FOR OBTAINING ALL NECESSARY PERMITS FROM THE L.A. COUNTY ROAD DEPT., DISTRICT OFFICE NO. 1, AND MAKE A REPORT WITH THE COUNTY ENGINEER, ROOM 1204 PINE STREET, 2ND FLOOR BROADWAY SUBURBAN TO COVER THE COST OF CONSTRUCTION INSPECTION AND RECORD PLANS.
 APPROVAL OF THIS PLAN BY THE COUNTY OF LOS ANGELES DOES NOT CONSTITUTE A REPRESENTATION AS TO THE ACCURACY OF THE LOCATION OR THE EXISTENCE OR NON-EXISTENCE OF ANY UNRECORDED BRICK PIPE, OR STRUCTURE WITHIN THE LIMITS OF THE PROJECT. THE WORKER SHALL BE RESPONSIBLE TO A STRAIGHT LINE BETWEEN SAID INDICATED POINTS.
 IF WORK IS TO BE DONE IN A STATE HIGHWAY, A PERMIT MUST BE OBTAINED FROM THE STATE OF CALIFORNIA, DIVISION OF HIGHWAYS, 120 SOUTH BRANDBURG STREET.

COUNTY OF LOS ANGELES, CALIFORNIA
 APPROVED, JOHN A. LAMBE, COUNTY ENGINEER
 APPROVED, C. R. COOPPER, CHIEF ENGINEER
 BY: *Allen S. ...* SANITATION ENGINEER
 BY: *W. B. ...* OFFICE ENGINEER
 CHECKED BY: *JK Under 2-17-58*
 OFFICE OF COUNTY ENGINEER, BOX C. E. NO. 3416

William L. ...
 CIVIL ENGINEER
 APPROVED - CITY OF LA PUENTE

INDUSTRIAL WASTE APPROVAL
 BY: *Jack ...* DATE 12-12-58



CONNECTION CHARGES
 AS INDICATED

26,786