

**LA PUENTE BLDG. DIST. NO. 2.02**

PROFILE ALIGNMENT AND GRADE OF **P.C. 4985**  
**SANITARY SEWERS** PAGE **1**  
 TO BE CONSTRUCTED IN **J.N. 0862.19**

**TRACT NO. 24501** (27,719)  
 J.N. 0862.16  
**PRIVATE CONTRACT NO. 4985**

W.S. 38  
 2 SHEETS, 2 PAGES

SCALE: VERT. 1"=5'  
 HORIZ. 1"=50' SEPT. 1958

PREPARED IN THE OFFICES OF

**KEMMERER ENGINEERING CO., INC.**

FOR LEGEND SEE PLAN NO. S-A-64

NOTE: GRADES TO WHICH THIS IMPROVEMENT IS TO BE CONSTRUCTED AND SHOWN ON PLANS AND PROFILES. GRADE POINTS FOR TOP OF CURBS, CENTER LINE OF STREETS, OR CENTER LINE OF ALLEYS ARE SHOWN BY CIRCLES ON PROFILES. AT ALL POINTS BETWEEN DESIGNATED POINTS THE GRADE SHALL BE ESTABLISHED SO AS TO COMPLY TO A STRAIGHT LINE DRAWN BETWEEN SAID DESIGNATED POINTS.  
 ELEVATIONS ARE IN FEET ABOVE U.S.C. & G.S. SEA LEVEL DATUM OF 1929.  
 THIS DRAWING AND THE DATA HEREON ARE HEREBY MADE A PART OF THE SPECIFICATIONS.  
 WORK SHALL BE CONSTRUCTED ACCORDING TO SPECIFICATIONS ON FILE IN THE OFFICE OF THE CITY ENGINEER AND SHALL BE PROSECUTED ONLY IN THE PRESENCE OF THE CITY ENGINEER.  
 BEFORE WORK CAN BE STARTED, THE CONTRACTOR MUST OBTAIN A PERMIT TO EXCAVATE IN CITY STREETS FROM THE L.A. COUNTY ROAD DEPT., DIST. AND MAKE A REPORT WITH THE CITY ENGINEER, ROOM 304 SAN JERONIMO BLDG., 125 S.O. BROADWAY, SUFFICIENT TO COVER THE COST OF CONSTRUCTION INSPECTION AND RECORD PLANS.  
 APPROVAL OF THIS PLAN BY THE CITY OF LA PUENTE DOES NOT CONSTITUTE A REPRESENTATION AS TO THE ACCURACY OF THE LOCATION OF OR THE EXISTENCE OF NON EXISTENCE OF ANY UNDERGROUND UTILITY PIPE, OR STRUCTURE WITHIN THE LIMITS OF THIS PROJECT THIS NOTE APPLIES TO ALL PAGES.  
 IF WORK IS TO BE DONE BY A STATE EMPLOYEE, A PERMIT MUST BE OBTAINED FROM THE STATE OF CALIFORNIA, DIVISION OF HIGHWAYS 120 SOUTH SPRING STREET.

**CITY OF LA PUENTE, CALIFORNIA**

APPROVED, JOHN A. LAMBE, CITY ENGINEER  
 APPROVED, C.A. COMPANY, CHIEF ENGINEER  
 BY *[Signature]* BY *[Signature]*  
 SANITATION ENGINEER OFFICE ENGINEER  
 CHECKED BY *[Signature]*  
 OFFICE OF CITY ENGINEER, 125 S.O. BROADWAY

SUBMITTED *[Signature]*  
 SAN GABRIEL VALLEY REGIONAL ENGINEER

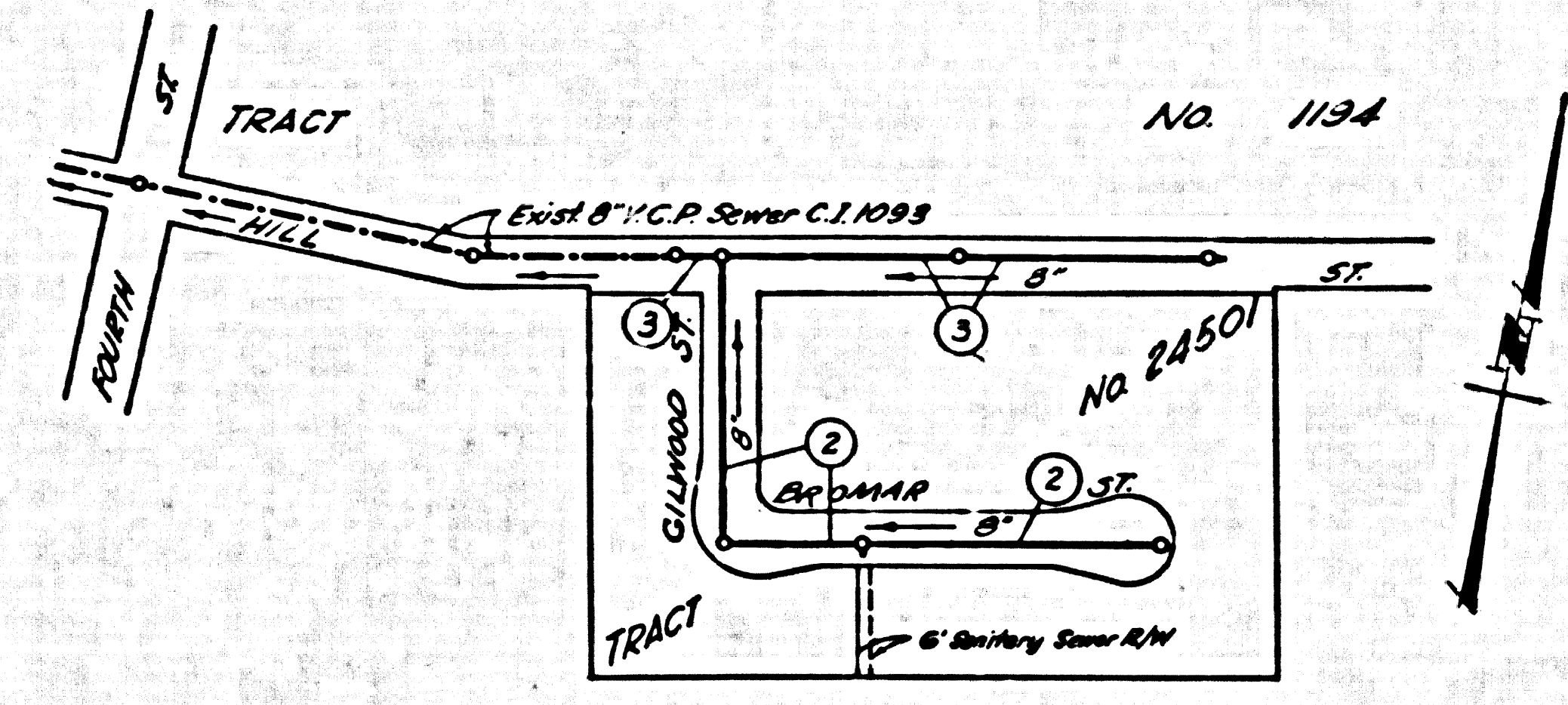
- NOTES:
1. PROFILE STAGES ON THE PROPERTY LINE OR PROPERTY LINES PRODUCED AT RIGHT ANGLES TO THE SEWER LINE AT THE CENTER LINE OF EACH PARCELS.
  2. NO REPRESENTATIVE OF THE CITY ENGINEER WILL SURVEY OR LAYOUT ANY PORTION OF THE WORK.
  3. THE OWNER OR HIS AUTHORIZED REPRESENTATIVE SHALL FURNISH THE CITY ENGINEER WITH GRADE SHEETS AND STATION FOR ALL HOUSE LATERALS AND BRANCHES AND SHALL FURNISH STAGE PLUS FROM AT THEIR PROPER LOCATIONS WITH STATIONING AND PLANNING NUMBER AND CHANGE IN LOCATION SHALL BE REQUESTED IN WRITING BY THE OWNER OR HIS REPRESENTATIVE.
  4. NO REVISIONS SHALL BE MADE IN THESE PLANS WITHOUT THE APPROVAL OF THE CITY ENGINEER.
  5. USE STANDARD SANITARY BRANES AND COVERS, S-A-117, EXCEPT AS NOTED.
  6. USE STANDARD STRENGTH PIPE EXCEPT AS NOTED.
  7. USE CEMENT MORTAR "WEDGE-LOCK" OR "SPEED-LOCK" FOR ALL INTERIOR SLAY AND BRANCHES; USE S.P.C.C. 201-1-10-48.
  8. RESURFACE ALL TRENCH WITHIN PAVED AREA TO MEET L.A. COUNTY ROAD DEPT. OR CALIF. STATE HIGHWAY DEPT. SPECIFICATIONS IN ACCORDANCE WITH PERMITS.
  9. ENCASE FOUR FEET OF SEWER AT POINTS OF INTERFERENCE WITH POLES, S-A-178, CASE II.
  10. HOUSE LATERALS TO BE CONSTRUCTED WITH BRISSETS AT PROPERTY LINE. SEE PLAN SHOW CURB GRADE EXCEPT AS NOTED.
  11. ALL STRUCTURES SHALL BE BRICK SEWER STRUCTURES, S-A-194, EXCEPT AS NOTED.
  12. FOR ALLOWABLE LEAKAGE TEST USE FORMULA NO. 1 S.P.C.C. 201-1-10-48.
  13. MANHOLE TOPS IN UNIMPROVED RIGHTS-OF-WAY TO BE 6" ABOVE FINISHED GRADE.
  14. THE PROPERTY ENGINEER IS TO PROVIDE THE SHORTEST LATERAL DEPTH AT THE PROPERTY LINE BELOW THE TOP OF CURB ELEVATION FOR EACH HOUSE LATERAL ON THIS DOUBLE SCALE.
  15. THE CONTRACTOR SHALL NOTIFY THE CONSTRUCTION DIVISION BY TELEPHONE, MADISON 2474, EXT. 362, AT LEAST 24 HOURS BEFORE STARTING ANY WORK UNDER THIS CONTRACT.

**DOUBLE SCALE**

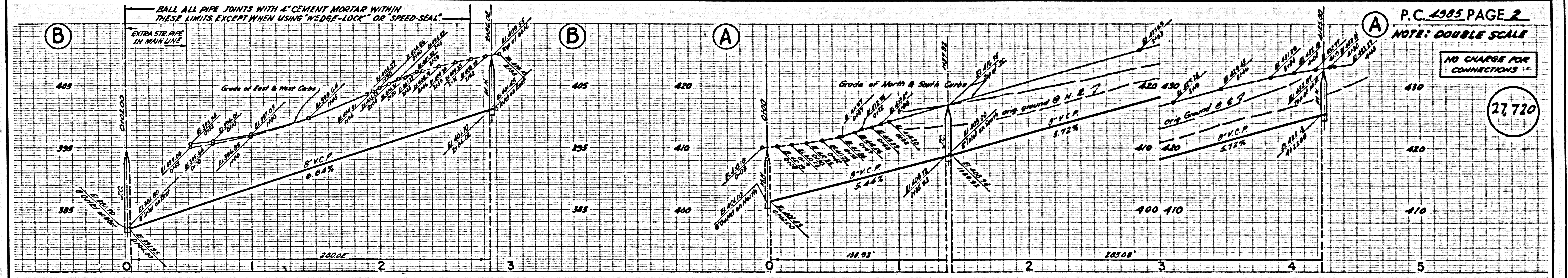
**E.M. S.B. 1031, L.A. COUNTY SURV. AREA**  
 INTERSECTION OF GILWOOD AVENUE  
 & HILL STREET TO EAST N. EDGE OF BROMAR  
 Cap. Extension 353 710 - 0000 Line 1958.

**CONNECTION CHARGES**  
**AS INDICATED**  
 7.77¢ per foot 1-28-59

**CITY OF LA PUENTE**  
 APPROVED *[Signature]*  
 CITY MANAGER



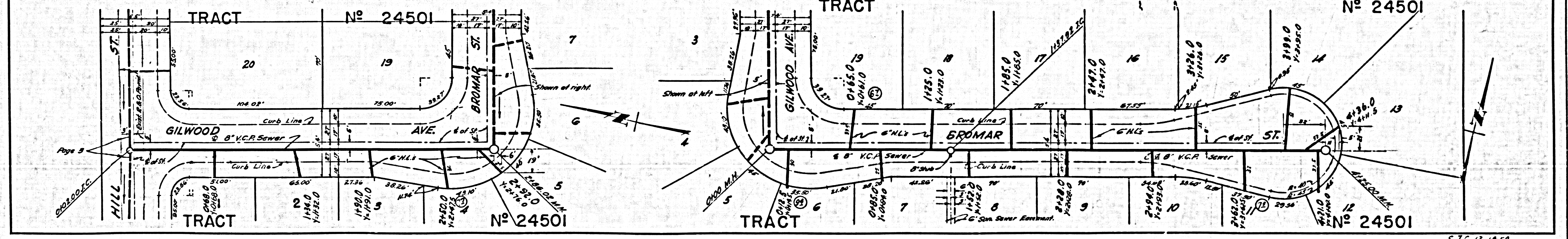
**INDEX MAP**  
**TRACT NO. 24501**  
 P.C. 4985 SCALE 1"=200'



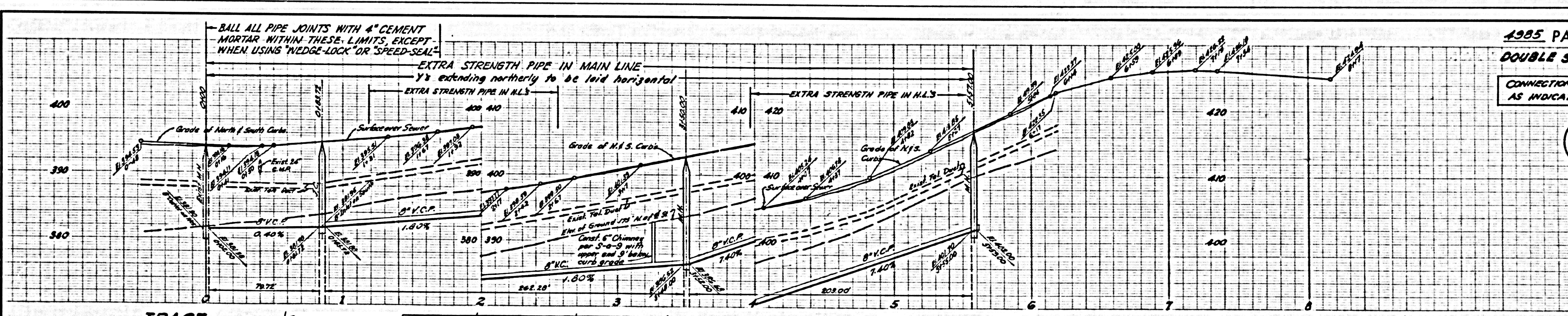
**P.C. 4985 PAGE 2**  
**NOTE: DOUBLE SCALE**

**NO CHARGE FOR CONNECTIONS**

(27,720)



S.T.C. 12-18-58



1985 PAGE 3  
 DOUBLE SCALE  
 CONNECTION CHARGES  
 AS INDICATED

27721

