

B.M. 51 1566 Elev. 148.657
 1/4 in. W. end of Catch Basin at N.E.
 Corner of Garfield and Slavson
 Avenues. 1955 adj.

EAST LOS ANGELES BLDG. DIST. NO. 6

- NOTES:**
- PROVIDE STAKES ON THE PROPERTY LINE OR PROPERTY LINES PRODUCED AT RIGHT ANGLES TO THE DRIVE LINE AT THE CENTER LINE OF EACH MANHOLE.
 - NO REPRESENTATIVE OF THE COUNTY ENGINEER WILL SURVEY OR LAYOUT ANY PORTION OF THE WORK.
 - THE OWNER OR HIS AUTHORIZED REPRESENTATIVE SHALL FURNISH THE COUNTY ENGINEER WITH GRAB SHEETS AND STATION FOR ALL HOUSE LATERALS AND T BRANCHES AND SHALL PROVIDE STAKES FOR THEM AT THEIR PROPER LOCATIONS WITH STATION AND PLAIN MARKS. ANY CHANGE IN LOCATION SHALL BE REQUESTED IN WRITING BY THE OWNER OR HIS REPRESENTATIVE.
 - NO REVISIONS SHALL BE MADE IN THESE PLANS WITHOUT THE APPROVAL OF THE COUNTY ENGINEER.
 - USE STANDARD MANHOLE FRAMES AND COVERS, S.A.-177.
 - USE STANDARD STRENGTH PIPE.
 - USE CEMENT MORTAR OF "WEDGE-LOCK" OR "SPEED SEAL" FOR ALL VITRIFIED CLAY PIPE JOINTS PER SPEC'S. SEC. 26 / 40.
 - REFURFACE ALL TRUCKS WITHIN PAVED AREA TO MEET L. A. COUNTY ROAD DEPT., OR CALIF. STATE HIGHWAY DEPT. STANDARDS IN ACCORDANCE WITH PERMITS.
 - INDICATE FOUR FEET OF DRIVE AS POINTS OF INTERFERENCE WITH PAVES, S.A.-177, CASE 37.
 - HOUSE LATERALS TO BE CONSTRUCTED WITH BRICKS AT PROPERTY LINE. SEE SHOW CURB GRADE.
 - ALL STRUCTURES SHALL BE BRICK SEWER STRUCTURES, S.A.-104.
 - FOR ALLOWABLE LOADS SEE USE FORMULA NO. _____ SPEC. SEC. 50.
 - THE PRIVATE ENGINEER SHALL FURNISH THE HOUSE LATERAL DEPTH AT THE PROPERTY LINE BELOW THE TOP OF CURB ELEVATION FOR EACH HOUSE LATERAL ON THE GRADE SHEET.
 - THE CONTRACTOR SHALL NOTIFY THE CONSTRUCTION AND STORM DRAIN DIVISION BY TELEPHONE, MADISON 9-4747 EXT. 302, AT LEAST 24 HOURS BEFORE STARTING ANY WORK UNDER THIS CONTRACT.

PROFILE ALIGNMENT AND GRADE OF **P.C. 4986**
SANITARY SEWERS PAGE **1**
 TO BE CONSTRUCTED IN **26,683**

TELEGRAPH ROAD

PRIVATE CONTRACT NO. 4986

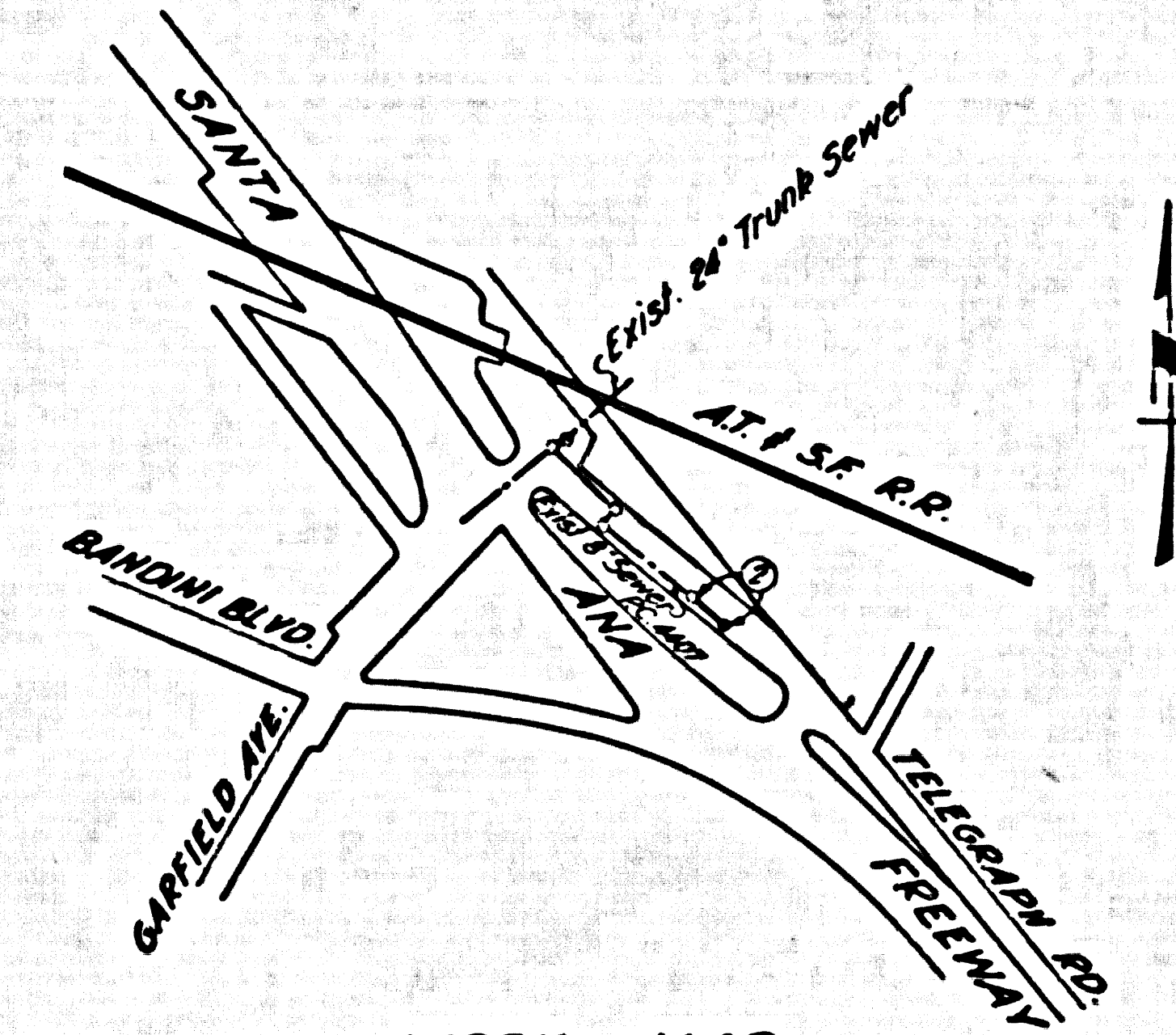
W.S. 3E
 1 SHEET, 2 PAGES

SCALE: VERT. 1" = 4' HORIZ. 1" = 40'
 DECEMBER, 1958

PREPARED IN THE OFFICES OF
Mc DANIEL ENGINEERING CO.

BY *A. H. Daniel*
 REG. C. E. NO. 2802

FOR LEGEND SEE PLAN NO. S-A-64



INDEX MAP
 P.C. 4986
 Scale: 1" = 600'

NO CHARGE FOR CONNECTIONS

B.M. Redwell 1-10-59

APPROVED, INDUSTRIAL WASTE DIVISION

BY *Frank J. G. [Signature]*

NOTE:
 GRADES TO WHICH THIS IMPROVEMENT IS TO BE CONSTRUCTED ARE SHOWN ON PLANS AND PROFILES. GRADE POINTS FOR TOP OF CURB, CENTER LINE OF DRIVE, OR CENTER LINE OF ALLEYS ARE SHOWN BY CIRCLES ON PROFILES. AT ALL POINTS BETWEEN INDICATED POINTS THE GRADE SHALL BE ESTABLISHED SO AS TO CONFORM TO A BRANDED LINE DRAWN BETWEEN SAID DESIGNATED POINTS.
 ELEVATIONS ARE IN FEET ABOVE U.S.C. & G.S. SEA LEVEL DATUM OF 1929.
 THIS DRAWING AND THE DATA HEREON ARE HEREBY MADE A PART OF THE SPECIFICATIONS.
 BEFORE WORK CAN BE STARTED, THE CONTRACTOR MUST OBTAIN A PERMIT TO EXCAVATE IN COUNTY OFFICES AND SHALL BE PROSECUTED CIVILLY IN THE PRESENCE OF THE COUNTY ENGINEER. ROOM 541 SAN AMERICAN BUILDING, 233 S.W. BROADWAY, SAN FRANCISCO, CALIF. TO COVER THE COST OF CONSTRUCTION INSPECTION AND RECORD PLANS.
 APPROVAL OF THIS PLAN BY THE COUNTY OF LOS ANGELES DOES NOT CONSTITUTE A REPRESENTATION AS TO THE ACCURACY OR THE LOCATION OF OR THE EXISTENCE OR NON-EXISTENCE OF ANY UNDERGROUND UTILITY PIPE, OR STRUCTURE WITHIN THE RANGE OF THIS PROJECT. THE CONTRACTOR SHALL VERIFY THE LOCATION OF ALL UTILITIES TO ALL PAGES.
 IF WORK IS TO BE DONE IN A STATE HIGHWAY, A PERMIT MUST BE OBTAINED FROM THE STATE OF CALIFORNIA, DIVISION OF HIGHWAYS, 120 SOUTH BRIDGE STREET.

COUNTY OF LOS ANGELES, CALIFORNIA

APPROVED, JOHN A. LAMBE, COUNTY ENGINEER

APPROVED, C.E. CAMPBELL, CHIEF ENGINEER

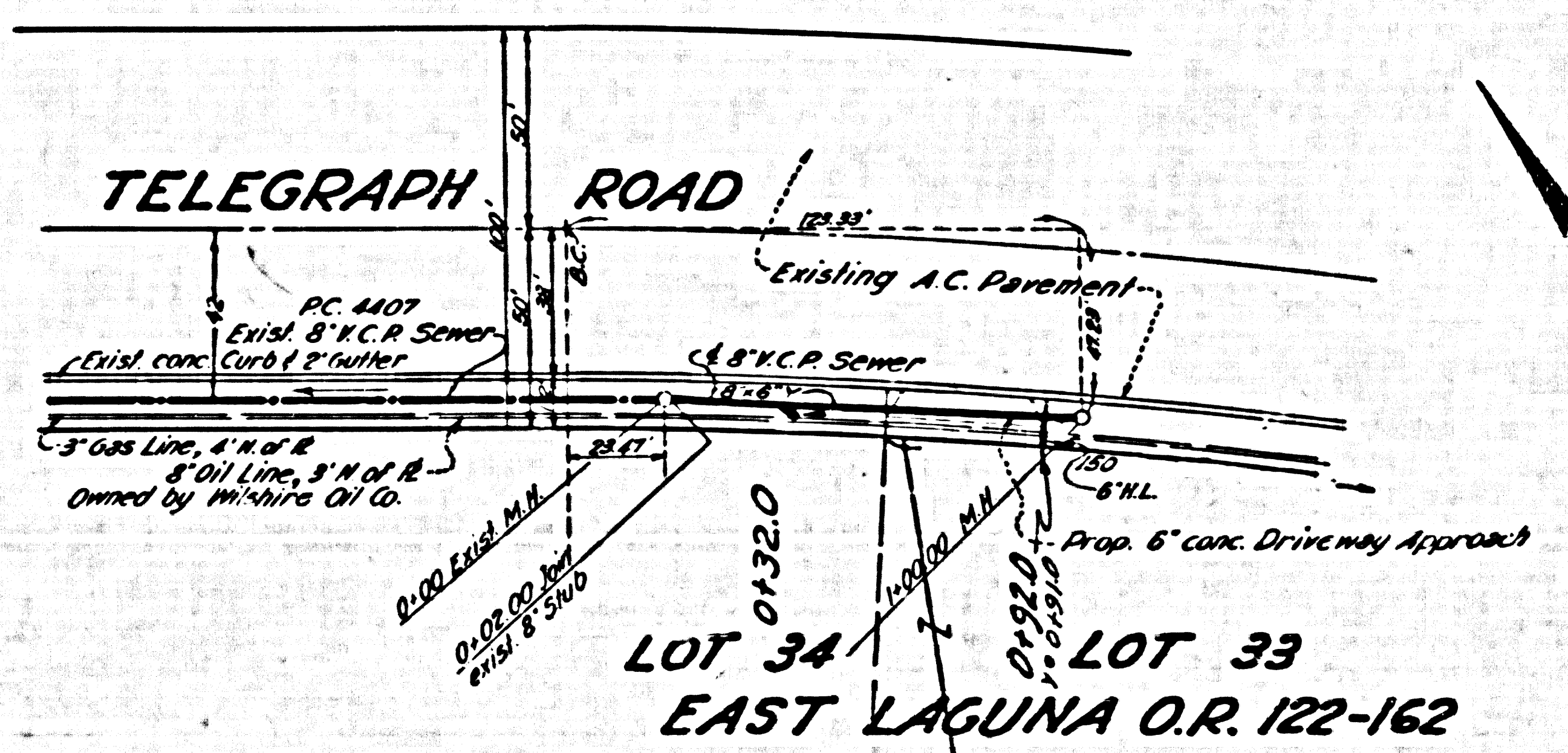
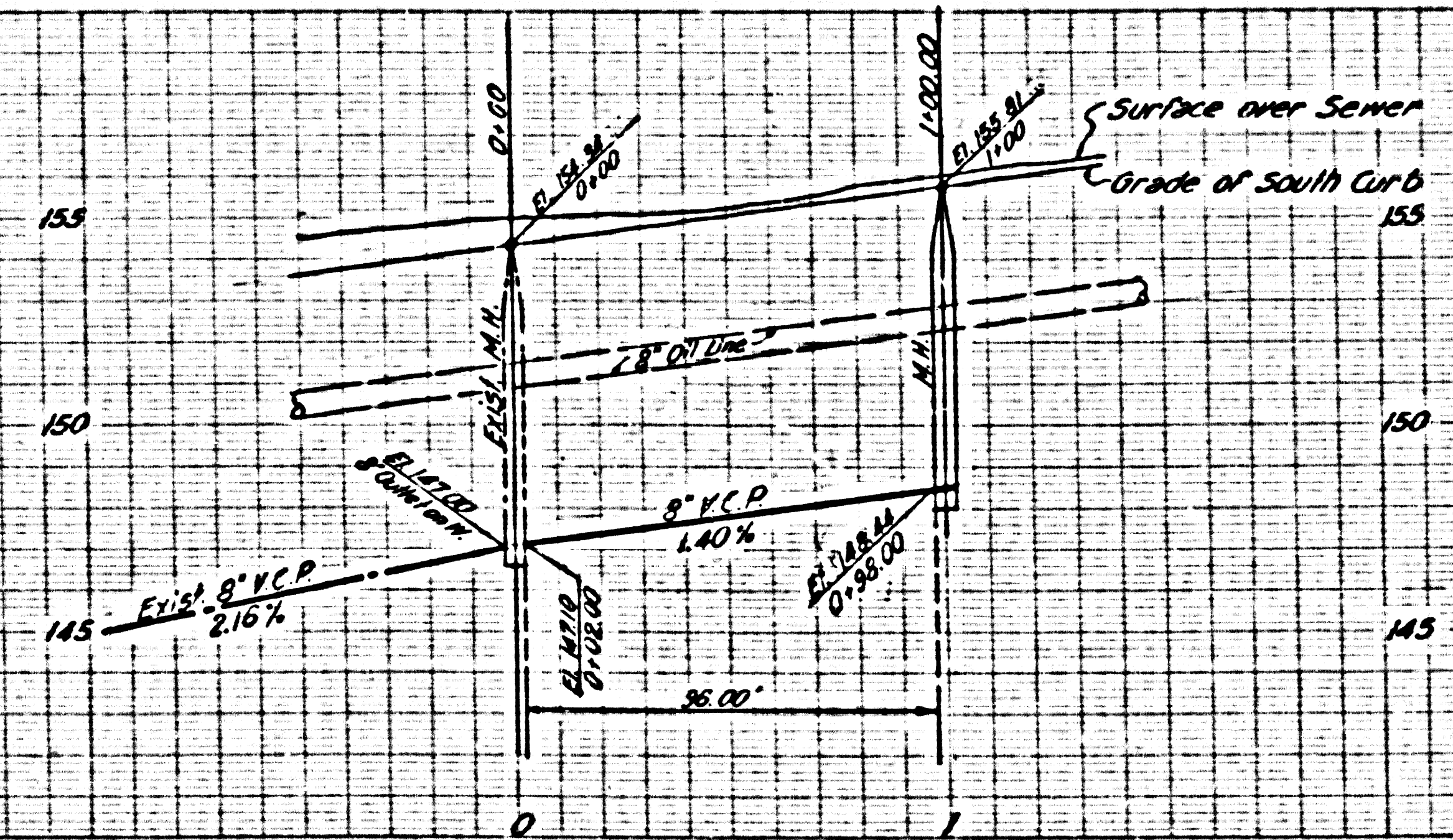
BY *A. H. Daniel* CAPTAIN CIVIL ENGINEER
 BY *[Signature]* OFFICE ENGINEER
 CHECKED BY *Carl E. [Signature]*
 OFFICE OF COUNTY ENGINEER, REG. C. E. NO. 2622

SUBMITTED *A. F. [Signature]*
 SAN GABRIEL VALLEY REGION ENGINEER

P.C. 4986 PAGE 2

NO CHARGE FOR CONNECTIONS

26,684



Note: The location and depth of the 3" Gas Line and 8" Oil Line, owned by the Wilshire Oil Co., are from record information only. Contractor should verify their location by exposing said pipes at the site prior to actual construction.

LOT 34
 LOT 33
 EAST LAGUNA O.R. 122-162

DL 1-14-59