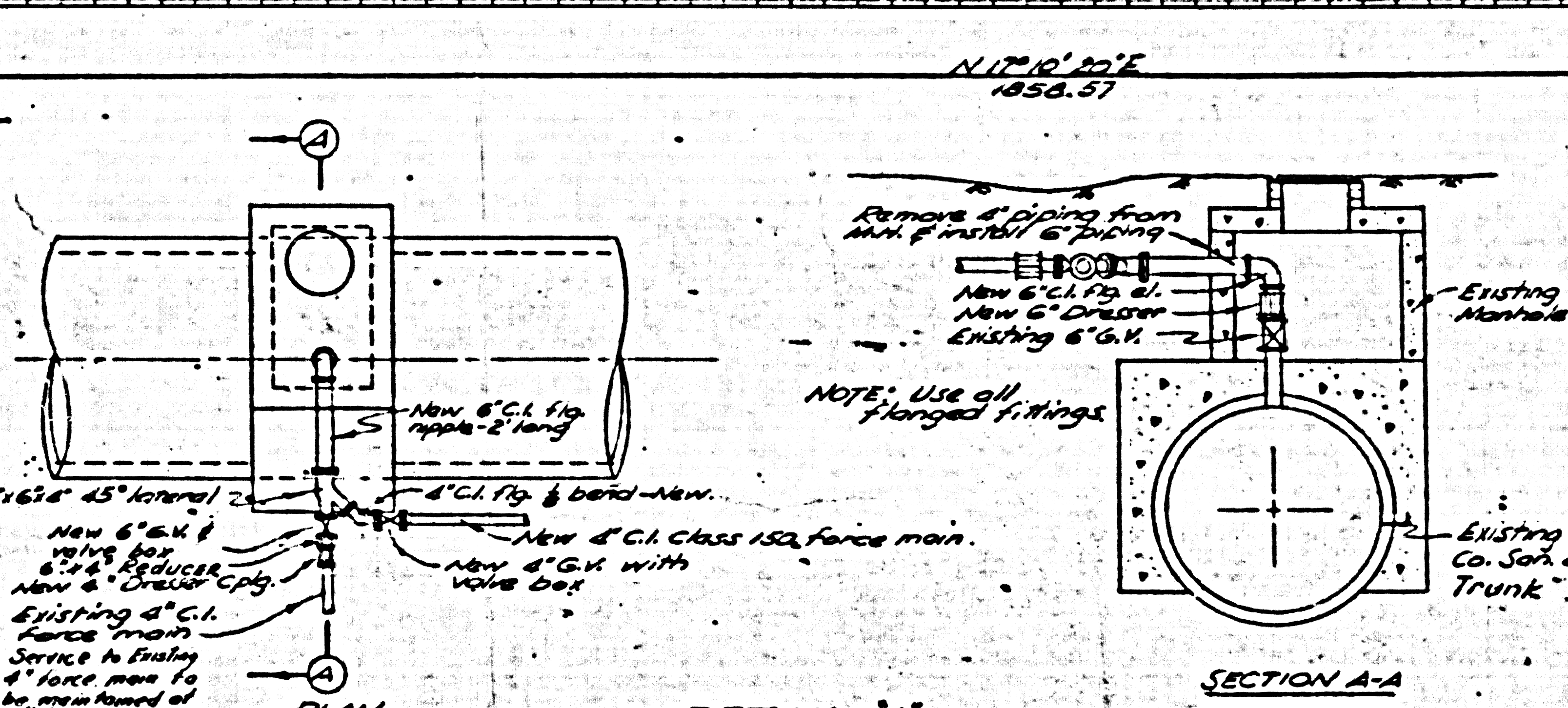
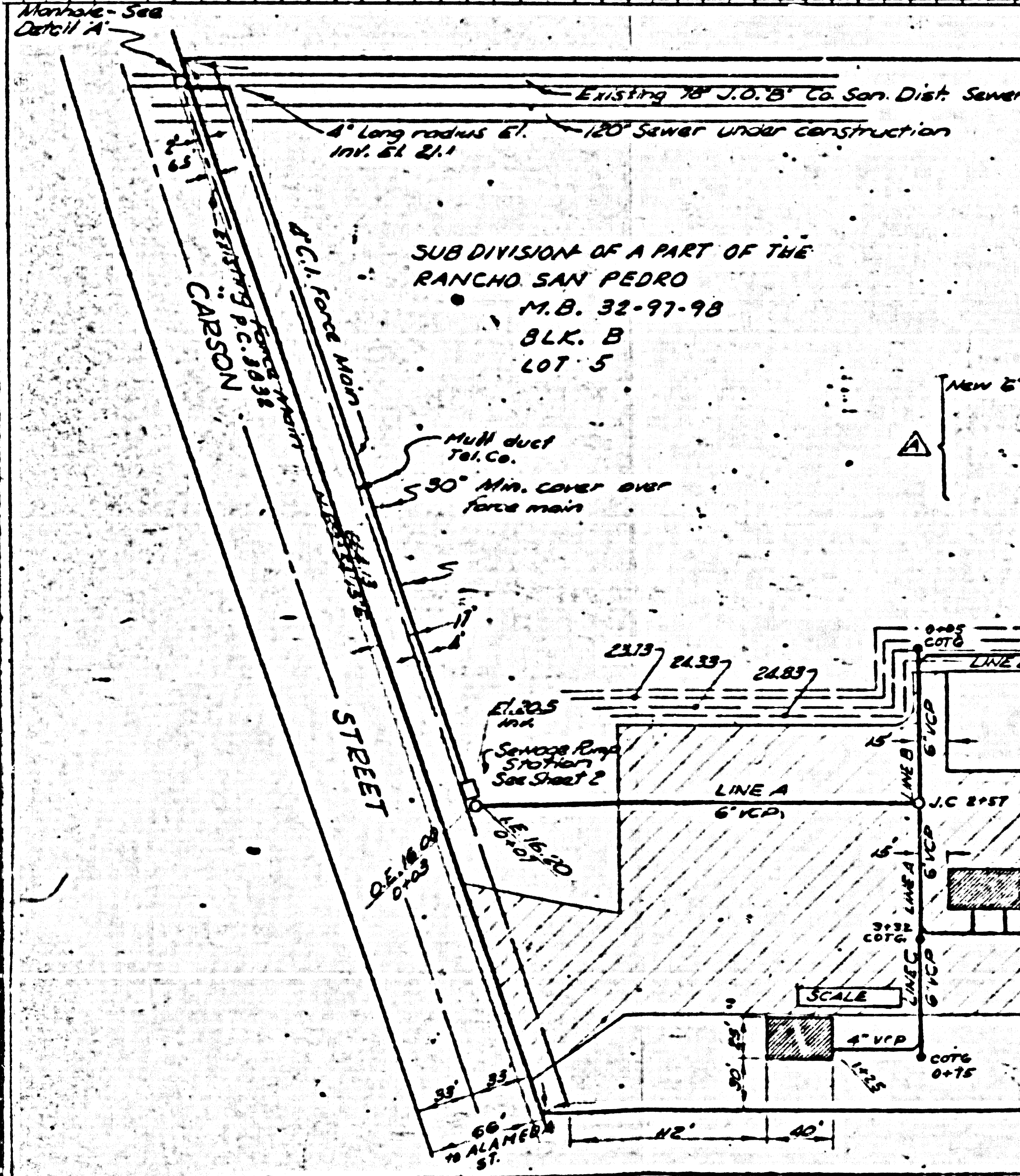


Scale: Vert. 1\"/>

PRIVATE CONTRACT NO. 4991
LUTHERA
DATE: 10/31/58
SHEETS: 2



DETAIL A
Scale 1/2\"/>

- NOTES:
1. All construction shall be in conformance with applicable plumbing codes.
 2. All construction methods shall be in conformance with Los Angeles Co. Standard Specifications for Construction of Sanitary Sewers.
 3. Cast iron pipe joints to lead coated "Tytar" or mechanical joint except as noted.
 4. Clay pipe joints to be "Wedge-Lock," "Speed-Seal" or equal.
 5. All structures shall be brick sewer structures, 5'-0\"/>
 - 6. Use standard Manhole Frames and Covers, 5'-0\"/>
 - 7. Manhole tops in unpaved areas to be 6\"/>

BEFORE WORK CAN BE STARTED, THE CONTRACTOR MUST OBTAIN A PERMIT TO EXCAVATE IN COUNTY STREETS FROM L.A. COUNTY ROAD DEPARTMENT, 5530 W. 8328 ST. AND A PERMIT TO COVER CONSTRUCTION, INSPECTION AND RECORD PLANS FROM THE COUNTY ENGINEER, ROOM 324, 253 SOUTH BROADWAY.

NOTE: THE CONTRACTOR SHALL NOTIFY THE CONSTRUCTION AND SEWER DRAIN DIVISION BY TELEPHONE, MADISON 9-4747, EXT. 302, AT LEAST 24 HOURS BEFORE STARTING ANY WORK UNDER THIS CONTRACT.

COUNTY OF LOS ANGELES, CALIFORNIA
APPROVED: [Signature] County Engineer
By [Signature] City Engineer
Checked: [Signature] 12-9-58
Office of County Engineer, Room C.E. 116, 2416

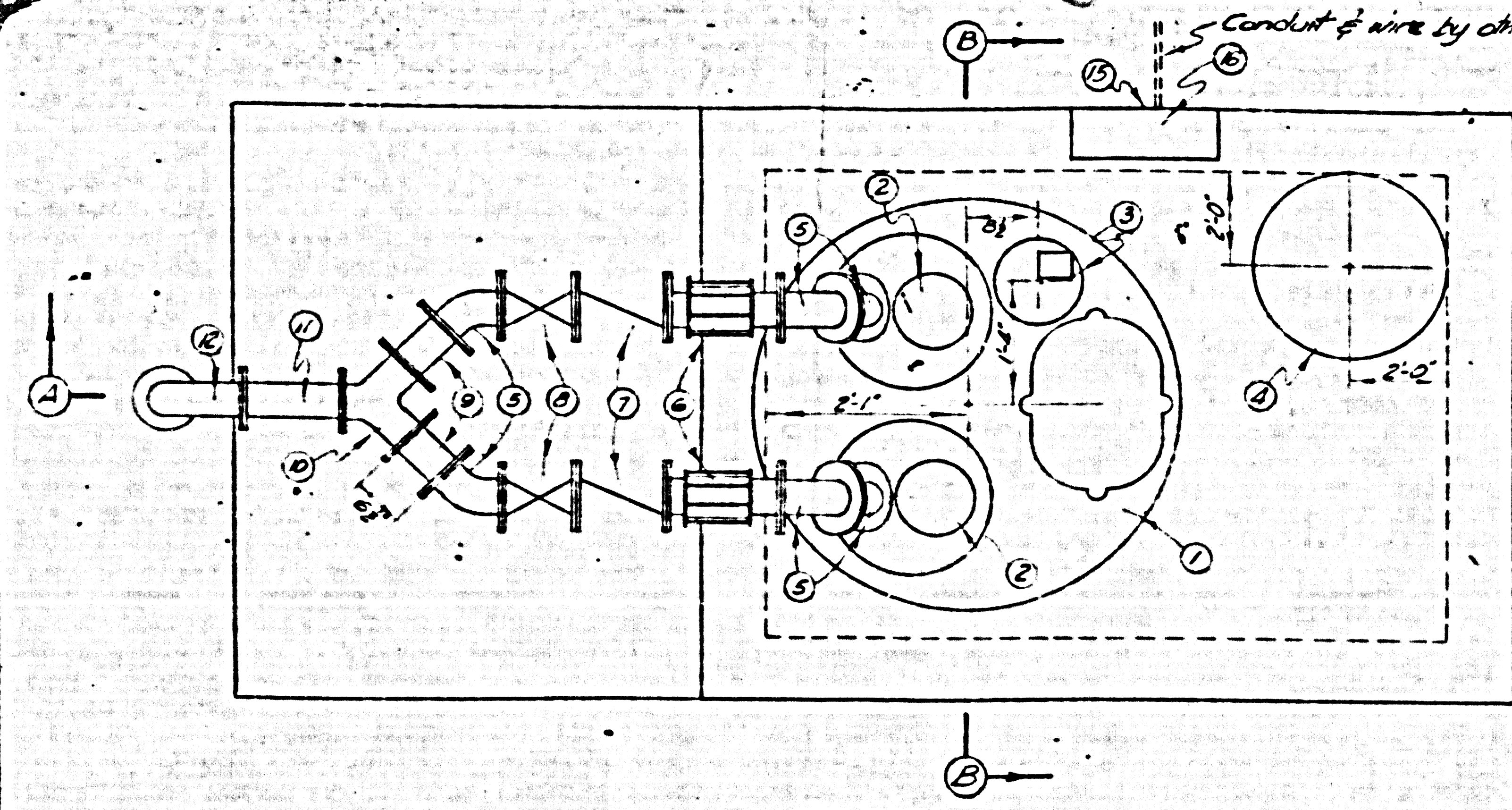
THE ABOVE APPROVAL APPLIES TO 4\"/>

Scale 1\"/>

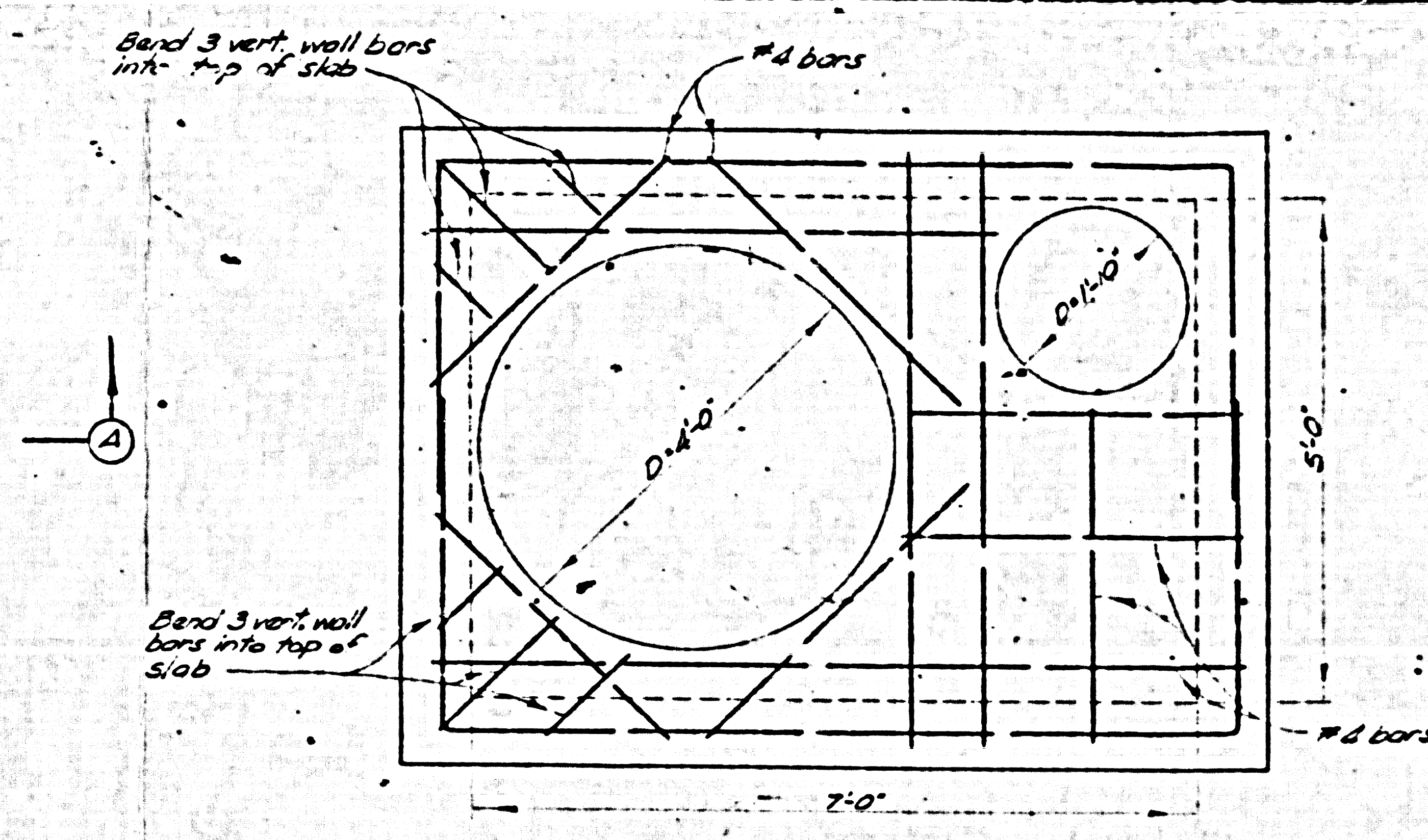
THIS PROJECT ADAPTED AS A PUBLIC FACILITY
CALIF. 2-1532C

REVISED 11.5.58 BY ENGINEER PC 4991

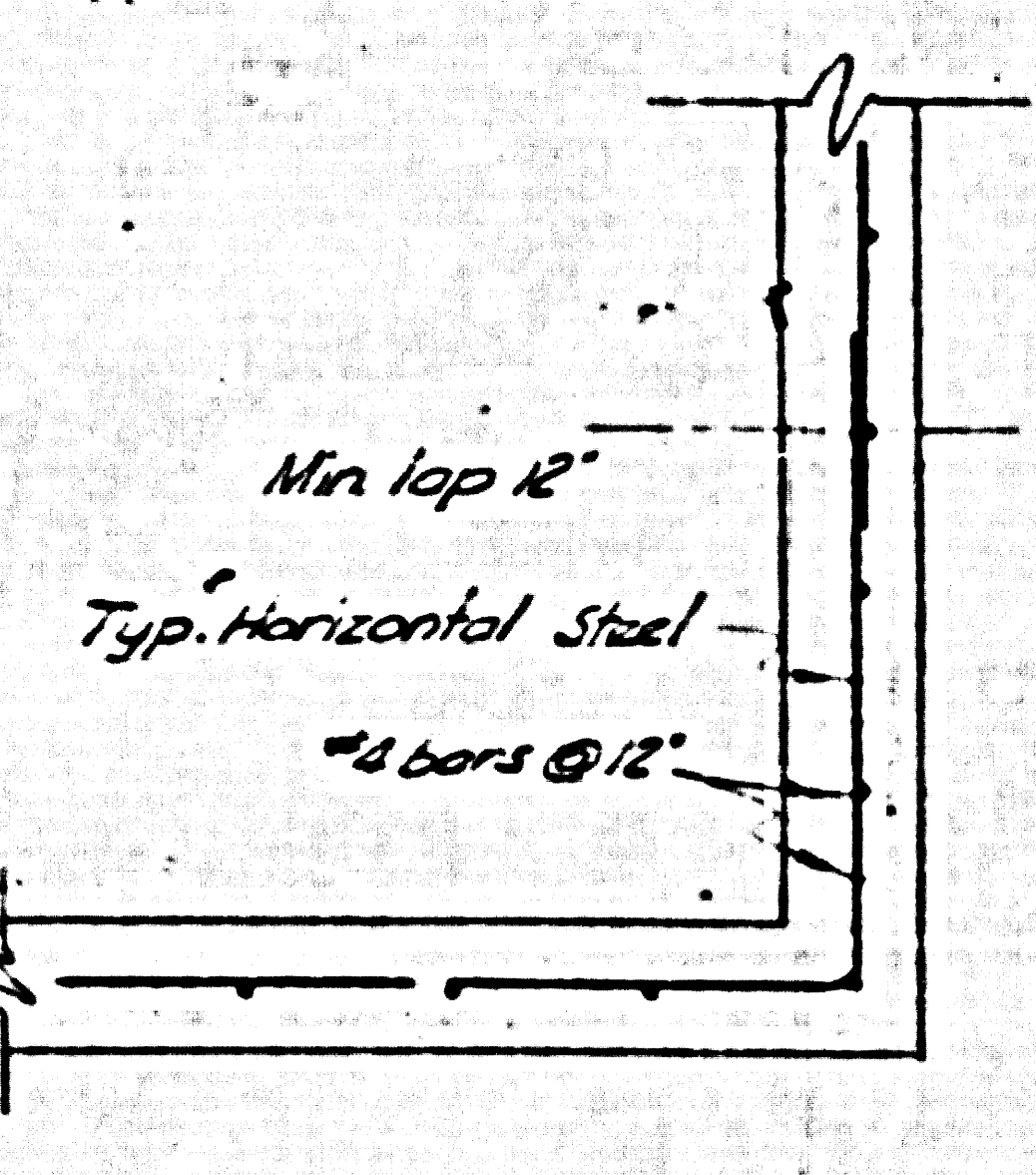
| | |
|---|----------------------|
| CAL ENGINEERS 2240 PARKWAY DR. EL MONTE, CALIF. | SOULE STEEL CO. |
| Date: Oct. 31, 1958 | SANITARY SEWERS |
| Scale: As Shown | |
| Approved: [Signature] | Drawing No. CE 197-1 |



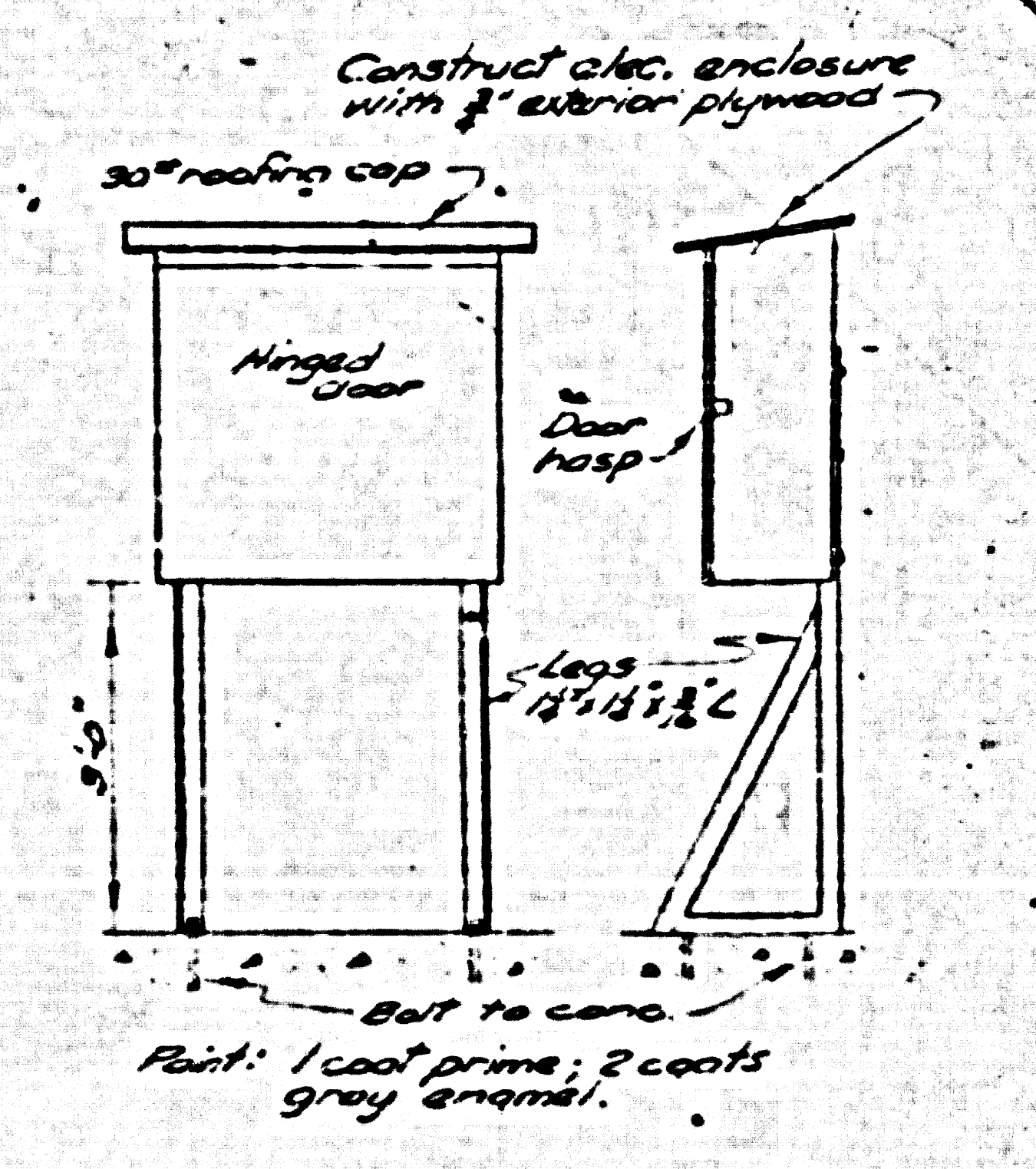
PLAN



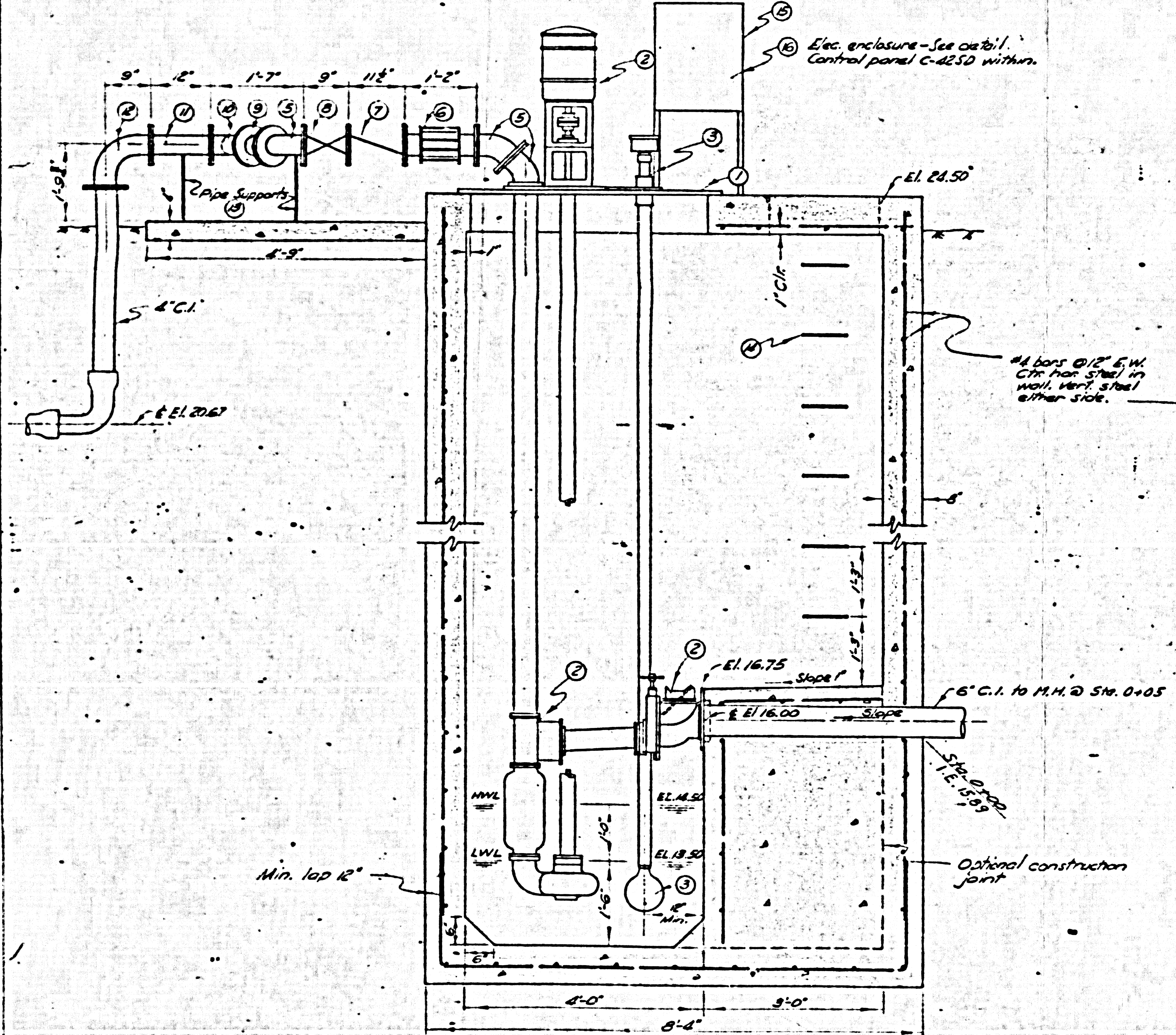
TOP SLAB - REINFORCEMENT



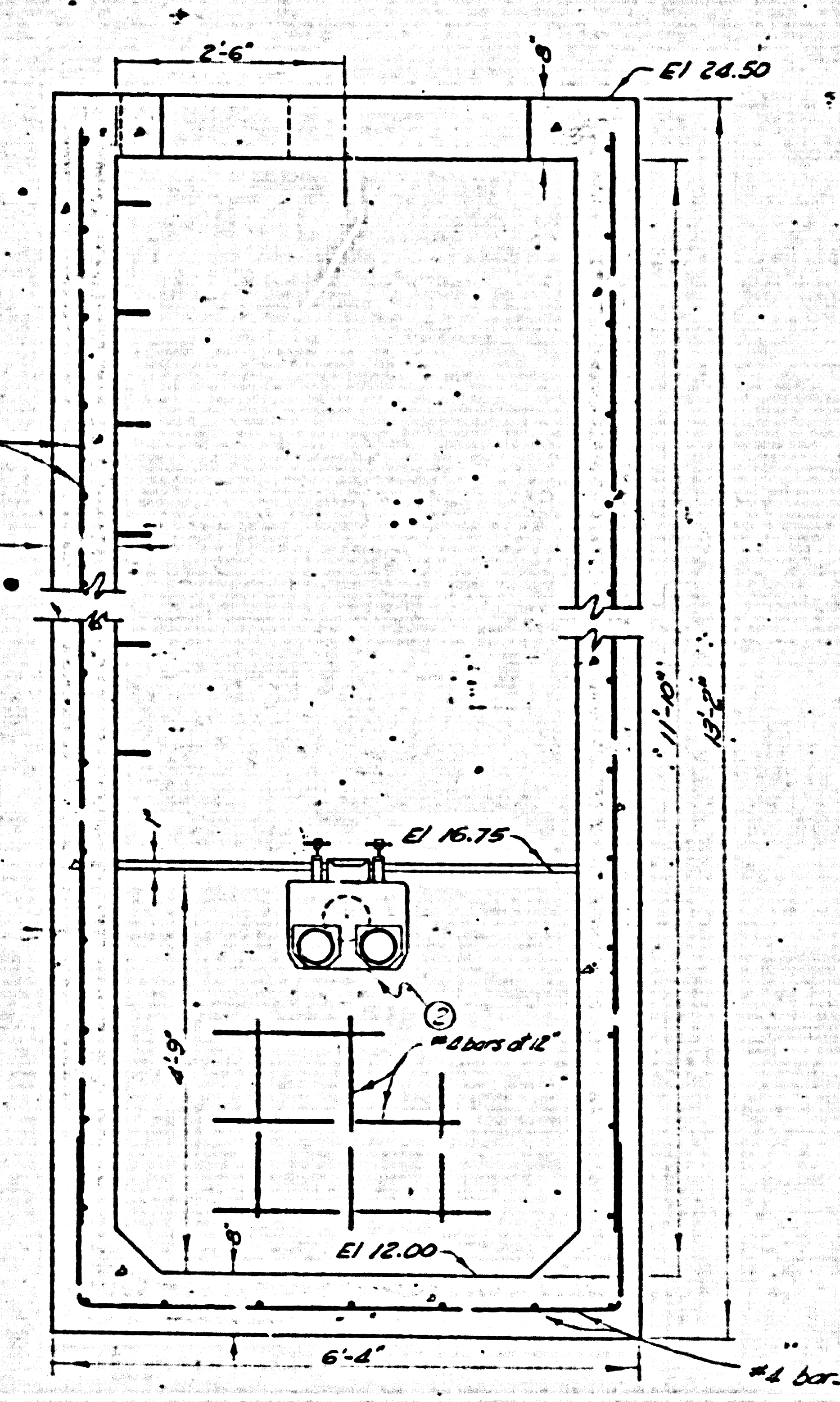
CORNER DETAIL



ELECTRICAL ENCLOSURE
No Score



SECTION A-A



SECTION B-B

- NOTES:
- Steel basin cover for duplex pump installation - cover for 48" basin dia. O.D. = 53". Chicago Pump Co. F-6.
 - Type "F" Flush Klean Installation 6"x4" VCS NCCB by Chicago Pump Co. Includes duplex pumps, motors, basin cover (1), controls, and inlet fitting. 2-EP motors 3 φ - 220v/440v Pump impeller dia. 6".
 - Chicago Pump Co. Sealtrac "Y-60" w/offset mounting flange.
 - Manhole frame and cover 22" dia. Alhambra Foundry A-2025 or equal. Cast iron frame and cover.
 - 4" 125 lb flanged 45° Elbow.
 - 4" Dresser coupling - Style 3B.
 - 4" flanged swing check valve - Crane No. 373 or equal.
 - 4" 125 lb flanged gate valve. Crane No. 461 or equal.
 - 4"x6" flanged spool.
 - True Flanged Wye - 4"x4"x4".
 - 4"x12" flanged spool.
 - 4" 90° long radius flanged elbow.
 - Pipe supports - Crane No. 264G. 3 required.
 - Manhole steps - Alhambra Foundry A-330 or equal.
 - High water alarm bell-G. 220/110v 60 cycle transformer.
 - Electrical control panel. Chicago Pump Co. No. C-425D. Panel to be equipped w/circuit breakers - See Detail.
- Concrete: All concrete and steel shall conform to Los Angeles Co. Building code. Concrete mix shall be designed to produce 3000 psi concrete at 28 days. Design stresses based on 2000 psi concrete.
 - Steel: To be deformed bars, intermediate grade.
 - Elevated material to be spread uniformly around pump station.
 - All electrical work shall be in conformance w/ Los Angeles Co. Electrical Code.
 - All piping and equipment not submerged shall have 1 coat of Rust Penetrating Primer No. 622 and 2 coats of Gray Glomax Enamel as manufactured by Inertol Company, Inc., Los Angeles, Calif.

PC. 4991
Sheet 2 of 2

| | |
|--|------------------------|
| CAL ENGINEERS 2240 PARKWAY DR. EL MONTE, CALIF | SOULÉ STEEL COMPANY |
| Date: Nov. 10, 1958 | PUMP STATION |
| Scale: 3/8" = 1'-0" | |
| Approved: Russell G. Ludwig RE 6752 | Drawing CE 187-2 |