

BENCH MARK SY 1432 EWN 66078  
 1.7' IN WEST END OF CURB, NEARWELL 230'  
 N. and 2.45' N. of E. of ARTESIA  
 and Palo Verde. (Bellflower Creek)

NO CHARGE  
 FOR CONNECTIONS  
 E. Revised 1-27-53

# BELFLOWER BLDG. DIST. NO. 4.07

- NOTE:
1. PROVIDE STAKES ON THE PROPERTY LINE OR PROPERTY LINES PRODUCED AT RIGHT ANGLES TO THE SEWER LINE AT THE CENTER LINE OF EACH MANHOLE.
  2. ANY REPRESENTATIVE OF THE CITY ENGINEER WILL SURVEY OR LAY OUT ANY PORTION OF THE WORK.
  3. THE OWNER OR HIS AUTHORIZED REPRESENTATIVE SHALL FURNISH THE CITY ENGINEER WITH GRADE SHEETS AND STATIONING FOR ALL HOUSE LATERALS AND Y BRANCHES AND SHALL PROTECT STAKES FOR THEM AT THEIR PROPER LOCATIONS WITH STATIONING PLAINLY MARKED. ANY CHANGE IN LOCATION SHALL BE REQUESTED IN WRITING BY THE OWNER OR HIS REPRESENTATIVE.
  4. THE PRIVATE ENGINEER SHALL FURNISH THE HOUSE LATERAL DEPTH AT THE PROPERTY LINE BELOW THE TOP OF CURB ELEVATION FOR EACH HOUSE LATERAL ON THE GRADE SHEET.
  5. NO REVISIONS SHALL BE MADE IN THESE PLANS WITHOUT THE APPROVAL OF THE CITY ENGINEER.
  6. USE STANDARD MANHOLE FRAMES AND COVERS, 5-0-117.
  7. USE STANDARD STRENGTH PIPE.
  8. RESURFACE ALL TRENCH WITHIN PAVED AREA TO MEET L.A. COUNTY ROAD DEPT. OR CALIF. STATE HIGHWAY REQUIREMENTS IN ACCORDANCE WITH PERMITS.
  9. ENCASE FOUR FEET OF SEWER AT POINTS OF INTERFERENCE WITH POLES, CASE NO. 5-0-172.
  10. HOUSE LATERALS TO BE CONSTRUCTED WITH 1/4" RISE PER FOOT TO PROPERTY LINE.
  11. ALL STRUCTURES SHALL BE BRICK SEWER STRUCTURES, 5-0-104.
  12. FOR ALLOWABLE LEAKAGE TEST USE FORMULA NO. 2, SPEC'S. SEC. 54.
  13. MANHOLE TOPS IN UNIMPROVED RIGHTS-OF-WAY TO BE SIX INCHES ABOVE FINISHED GRADE.
  14. THE CONTRACTOR SHALL NOTIFY THE CONSTRUCTION & STORM DRAIN DIVISION BY TELEPHONE, JAMISON 6-07, PER. 284, AT LEAST TWENTY FOUR HOURS BEFORE STARTING ANY WORK UNDER THIS CONTRACT.
  15. USE JOINT COMPOUND, "WEDGE-LOCK", OR "SPEED-SEAL" FOR ALL VITRIFIED CLAY PIPE JOINTS PER SPEC'S, SEC'S 33, 34 & 48. IF GROUND WATER IS ENCOUNTERED, "METAL FIBRING GASKETS", "WEDGE LOCK", OR "SPEED-SEAL", SHALL BE USED PER SPEC'S, SEC'S 34, 35, 36, & 48.

PROFILE ALIGNMENT AND GRADE OF **P.C. 4992**  
**SANITARY SEWERS** PAGE **1**  
 TO BE CONSTRUCTED IN J.N. **087119**

TRACT N<sup>o</sup> 24524

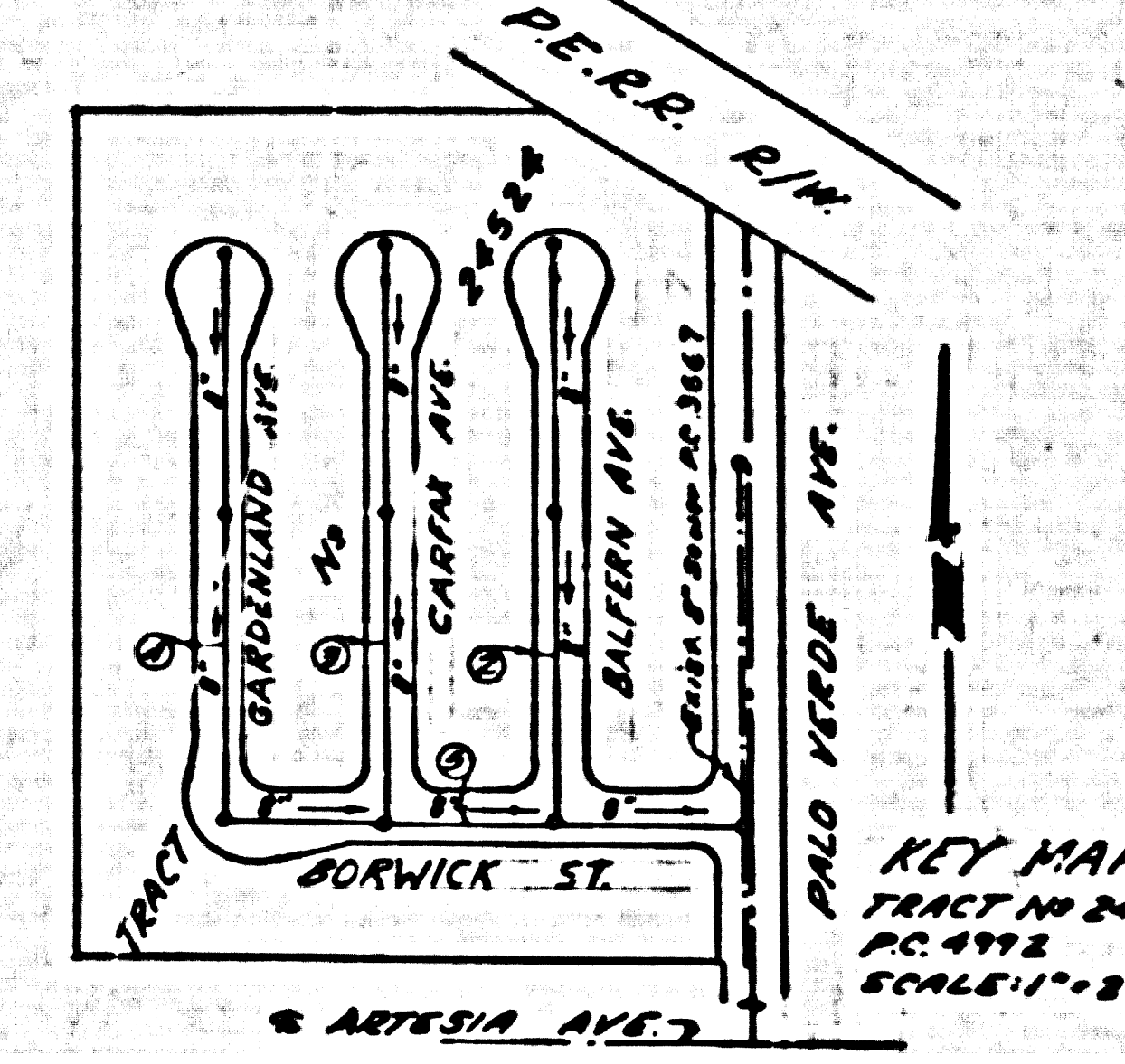
PRIVATE CONTRACT NO. 4992  
 JOB NUMBER **087119**  
 W.S. 33

3 SHEETS, 5 PAGES  
 SCALE: HORIZ. 1" = 50' VERT. 1" = 5'  
 DECEMBER, 1953  
 PREPARED IN THE OFFICES OF

28,050

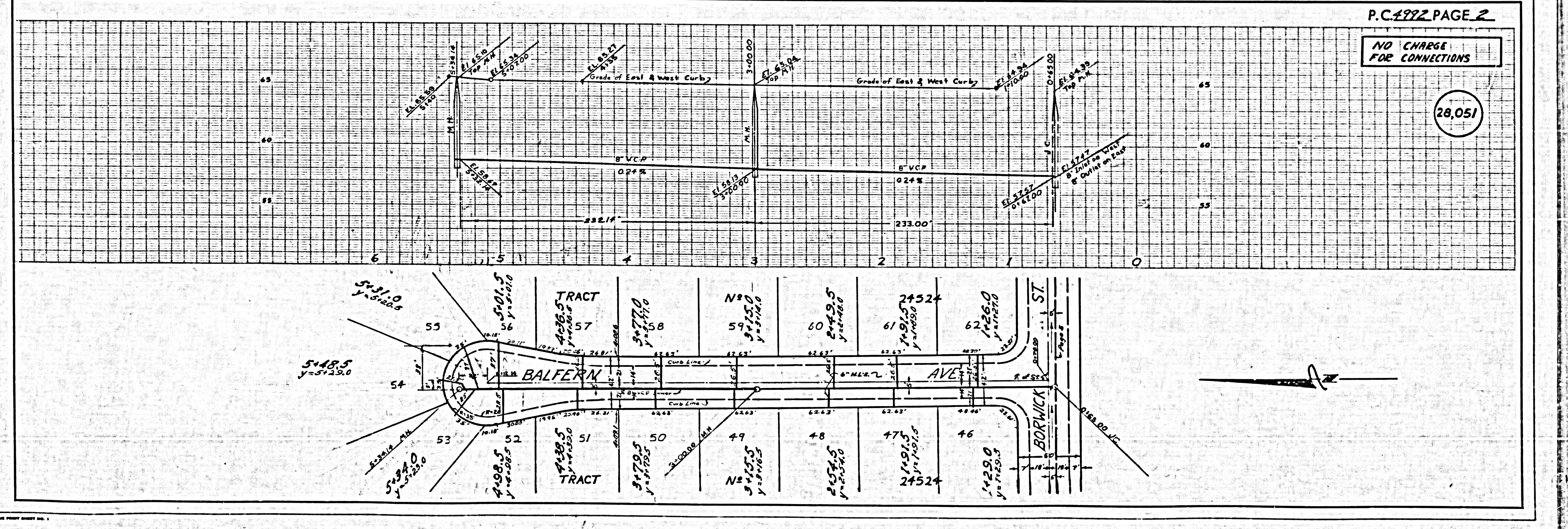
**MANNING ENGINEERING Co.**  
 by *James Manning*  
 REG. C. E. NO. 1876

FOR LEGEND SEE PLAN NO. S-A-64



NOTE:  
 GRADES TO WHICH THIS IMPROVEMENT IS TO BE CONSTRUCTED ARE SHOWN ON PLANS AND PROFILE. GRADE POINTS FOR TOP OF CURB, CENTER LINE OF STREET, OR CENTER LINE OF SEWER ARE SHOWN BY CIRCLES ON PROFILE AT ALL POINTS BETWEEN DESIGNATED POINTS THE GRADE SHALL BE ESTABLISHED SO AS TO COMFORM TO A STRAIGHT LINE BETWEEN SAID DESIGNATED POINTS.  
 ELEVATIONS ARE IN FEET ABOVE U.S.C. & G.S. SEA LEVEL DATUM OF 1929.  
 THIS DRAWING AND THE DATA HEREON ARE HEREBY MADE A PART OF THE SPECIFICATIONS.  
 WORK SHALL BE CONSTRUCTED ACCORDING TO SPECIFICATIONS ON FILE IN THE OFFICE OF THE CITY ENGINEER AND SHALL BE PROSECUTED ONLY IN THE PRESENCE OF THE CITY ENGINEER.  
 BEFORE WORK CAN BE STARTED, THE CONTRACTOR MUST OBTAIN A PERMIT TO EXCAVATE IN COUNTY STREETS FROM THE L.A. COUNTY ROAD DEPT. DISTRICT OFFICE NO. 4, AND MAKE A DEPOSIT WITH THE CITY OF BELFLOWER, 1923 BELFLOWER AVE. FOR THE COST OF CONSTRUCTION INSPECTION AND RECORD PLANS.  
 SUPPLY OF THIS PLAN BY THE CITY OF BELFLOWER DOES NOT CONSTITUTE A REPRESENTATION AS TO THE ACCURACY OF THE LOCATION OF OR THE EXISTENCE OR NON-EXISTENCE OF ANY UNDERGROUND UTILITY PIPE, OR STRUCTURE WITHIN THE LIMITS OF THIS PROJECT. THE WORK APPLICABLE TO ALL PAGES.  
 IF WORK IS TO BE DONE IN A STATE HIGHWAY, A PERMIT MUST BE OBTAINED FROM THE STATE OF CALIFORNIA, DIVISION OF HIGHWAYS, 120 SOUTH BRIDGE STREET.

**CITY OF BELFLOWER, CALIFORNIA**  
 APPROVED, JOHN A. LAMME, CITY ENGINEER  
 APPROVED, C.E. COMPTON, CHIEF ENGINEER  
 by *J.A. Lamme* by *C.E. Compton*  
 SUPERVISOR DISTRICT ENGINEER OFFICE ENGINEER  
 CHECKED BY *J.K. Wicks*  
 OFFICE OF COUNTY ENGINEER, REG. C. E. NO. 3556  
 SUBMITTED BY: *John A. Peterson* 1-27-53  
 Los Angeles Regional Engineer RCE 3871



P.C. 4992 PAGE 2

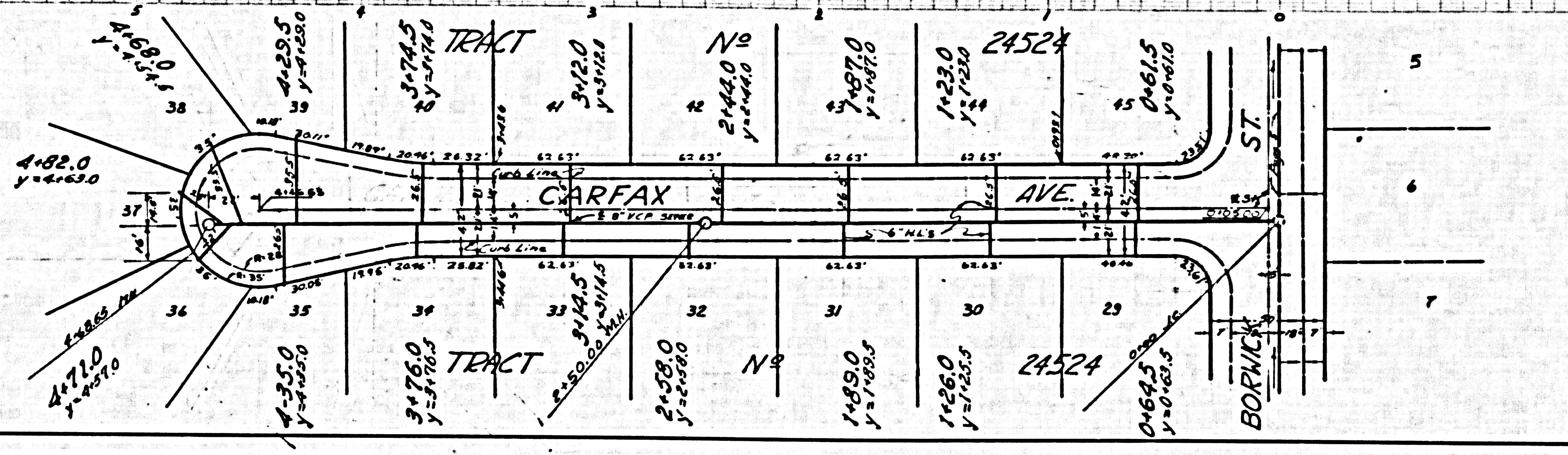
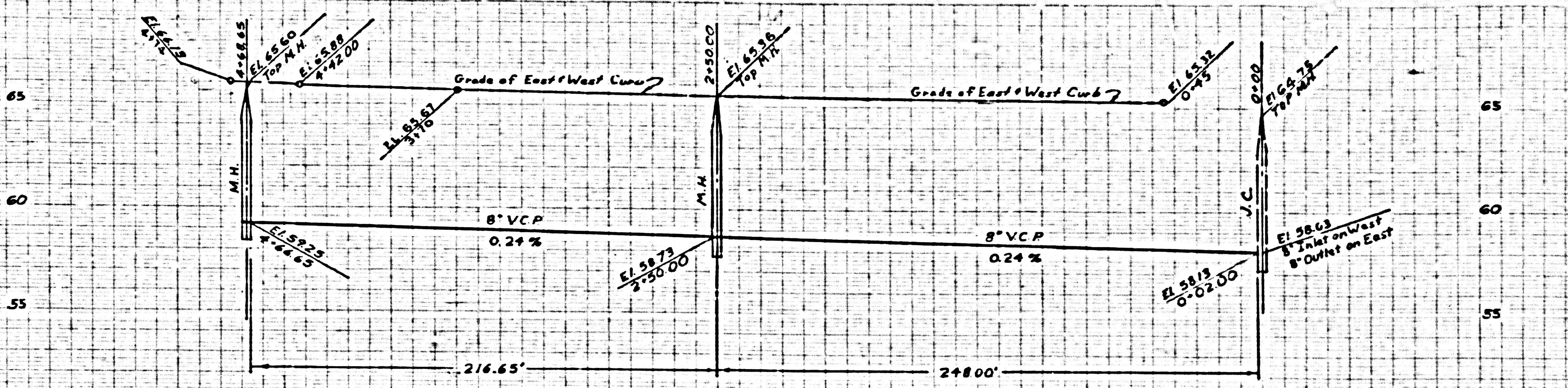
NO CHARGE  
 FOR CONNECTIONS

28,051



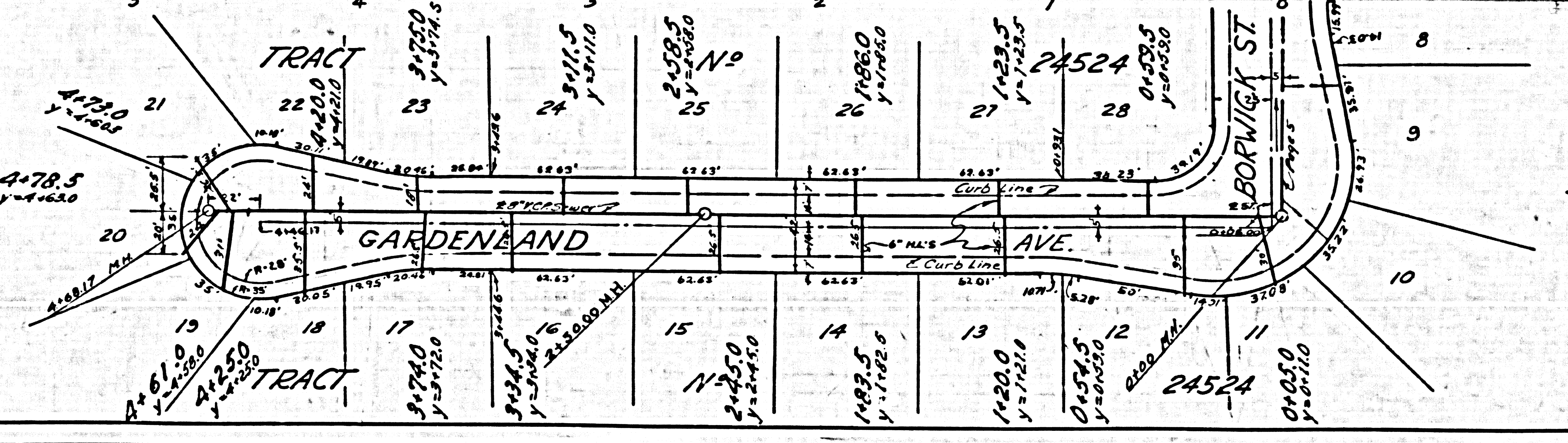
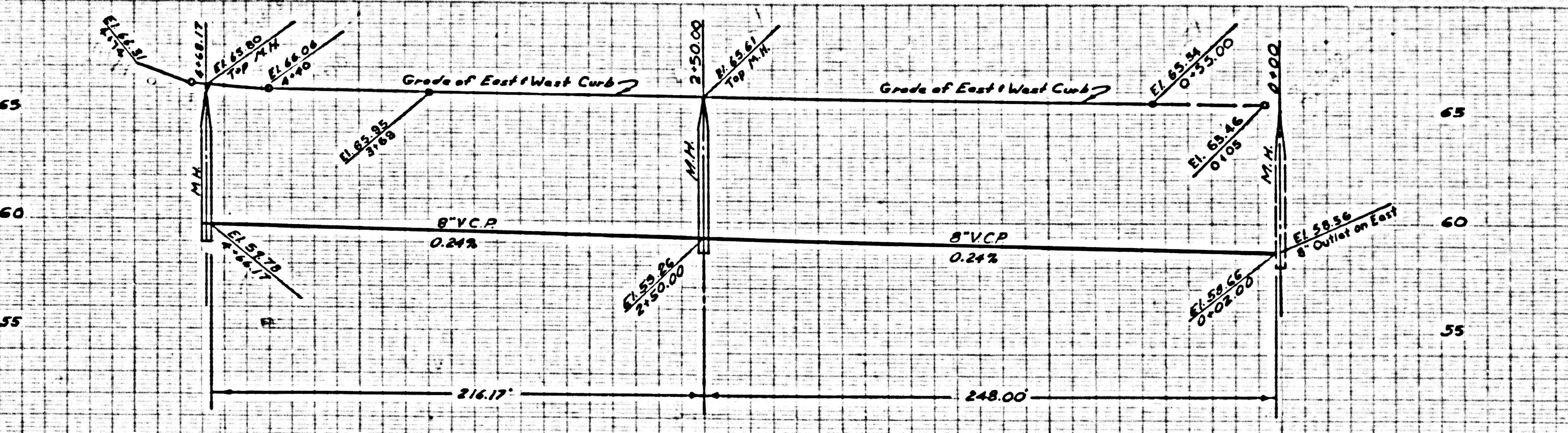
NO CHARGE FOR CONNECTIONS

28,052



NO CHARGE FOR CONNECTIONS

28,053

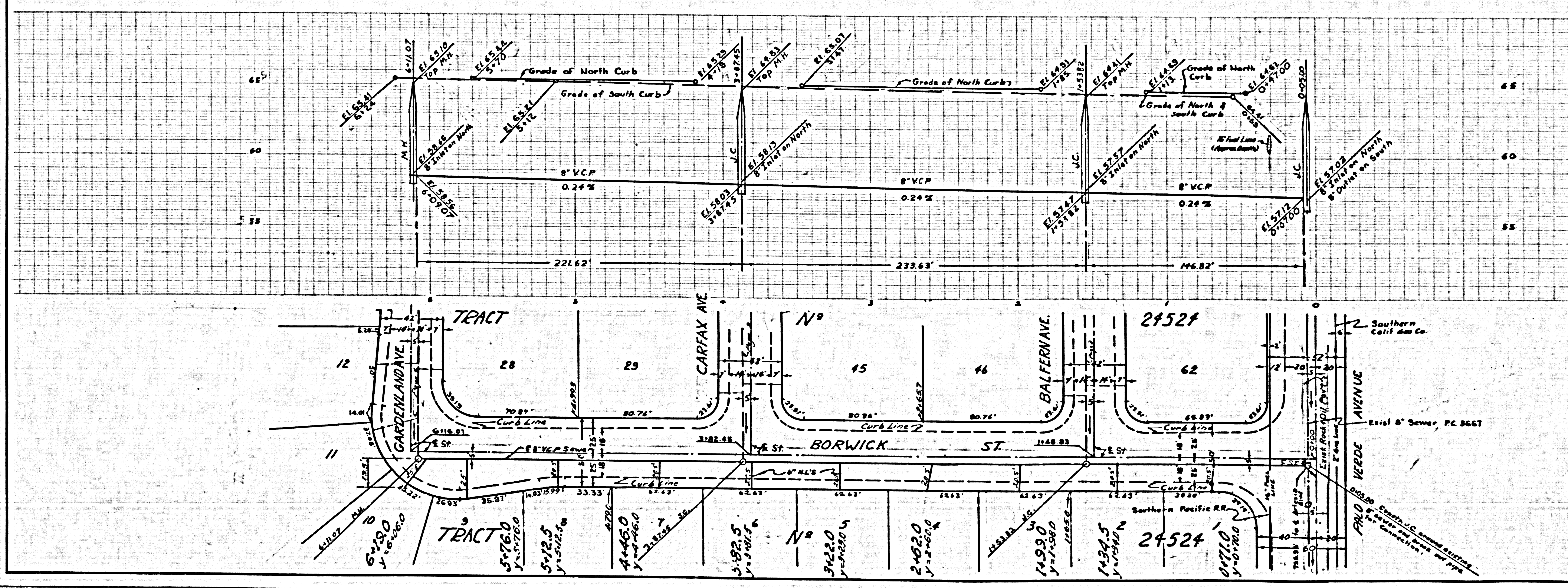


U.S.G.P. 100 OR SMALL SCALE PRINT SHEET NO. 1



NO CHARGE FOR CONNECTIONS

28,054



U. S. G. P. 1925, DIST. BY THE ENGINEERING DEPT. OF THE ARMY, WASHINGTON, D. C.