

TEMPLE CITY BLDG. DIST. NO. 5

PROFILE ALIGNMENT AND GRADE OF P.C. 4997  
 SANITARY SEWERS PAGE 1  
 TO BE CONSTRUCTED IN

**SANITARY SEWER EASEMENT**  
 IN LOT 31, TRACT NO 10530  
 PRIVATE CONTRACT NO. 4997

W.S. 46  
 1 SHEET, 2 PAGES  
 SCALE: VERT. 1" = 4' HORIZ. 1" = 20'  
 JANUARY, 1959

26864

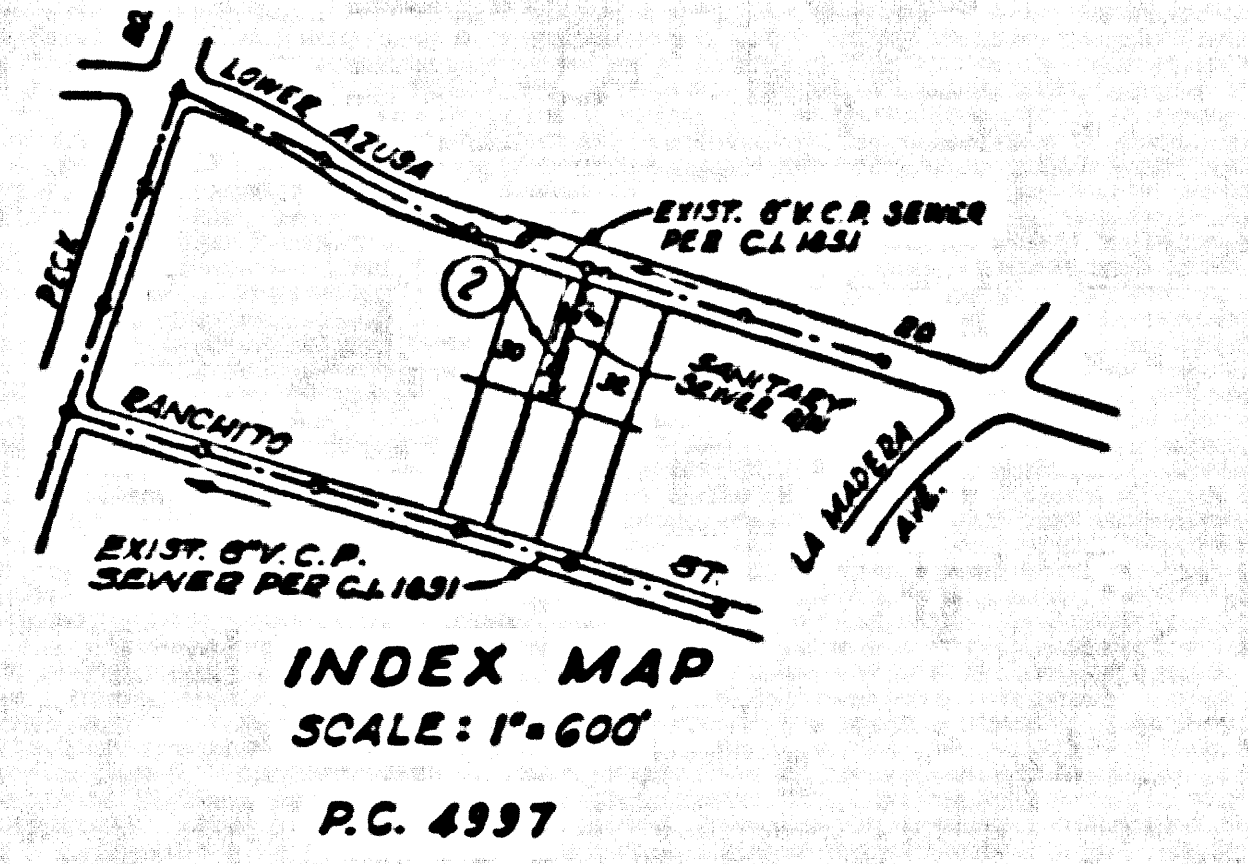
PREPARED BY THE OFFICES OF  
 A. RICHARD BROWN, JR.  
 7633 COMMERCE AVENUE, TEMPE, ARIZONA, U.S.A.  
 PHONE: LANSBURG 3-1333  
 REG. C. E. NO. 6753

FOR LEGEND SEE PLAN NO. S-A-64

**BENCH MARK SG 380**  
 L & T IN CONC. RETAINING WALL AT W. EDGE OF MAG. DIAPHR. 1.30' N. OF S. LOWER AZUSA RD. HOUSE #11749, FLUSH WITH GROUND ELEV. 326.299 COVINA QUAD. 1955

- NOTES:
1. PROVIDE STAKES ON THE PROPERTY LINE OR PROPERTY LINES PRODUCED AT RIGHT ANGLES TO THE SEWER LINE AT THE CENTER LINE OF EACH MANHOLE.
  2. THE REPRESENTATIVE OF THE COUNTY ENGINEER WILL VERIFY OR LAY OUT ANY PORTION OF THE WORK.
  3. THE OWNER OR HIS AUTHORIZED REPRESENTATIVE SHALL FURNISH THE COUNTY ENGINEER WITH GRADE SHEETS AND STAKING FOR ALL HOUSE LATERALS AND V BRANCHES AND SHALL - HOUSE STAKES FOR THESE AT THEIR PROPERTY LOCATIONS WITH STATIONING PLAINLY MARKED. ANY CHANGE IN LOCATION SHALL BE REQUESTED IN WRITING BY THE OWNER OR HIS REPRESENTATIVE.
  4. THE PRIVATE ENGINEER SHALL FURNISH THE HOUSE LATERAL DEPTH AT THE PROPERTY LINE BELOW THE TOP .7 CURB ELEVATION FOR EACH HOUSE LATERAL ON THE HOUSE SHEET.
  5. NO REVISIONS SHALL BE MADE IN THESE PLANS WITHOUT THE APPROVAL OF THE COUNTY ENGINEER.
  6. USE STANDARD MANHOLE FRAMES AND COVERS, 5-117, EXCEPT AS NOTED.
  7. USE STANDARD STRENGTH PIPE EXCEPT AS NOTED.
  8. USE CEMENT PLASTER OR "WEDGE-LOCK" OR "TYPED-SEAL" FOR ALL V.C.P. JOINTS PER SPEC., SECT. 56 & 62.
  9. RESURFACE ALL TRENCH WITHIN PAVED AREA TO MEET L.A. COUNTY ROAD DEPT. OR CALIF. STATE HIGHWAY REQUIREMENTS IN ACCORDANCE WITH PERMITS.
  10. EXHUME FOUR FEET OF SEWER AT POINTS OF INTERFERENCE WITH POLES, CASE 88, 5-172.
  11. ALL STRUCTURES SHALL BE BRICK SEWER STRUCTURES, 5-174, EXCEPT AS NOTED.
  12. FOR ALLOWABLE LEAKAGE TEST USE FORMULA NO. 1 SPEC., SEC. 54.
  13. MANHOLE TOPS IN UNIMPROVED RIGHTS-OF-WAY TO BE LEVEL WITH FINISHED GRADE.
  14. THE CONTRACTOR SHALL NOTIFY THE CONSTRUCTION & BROOM BRUSH DIVISION BY TELEPHONE, BARRISON 9-4747, EXT. 245, AT LEAST TWENTY-FOUR HOURS BEFORE STARTING ANY WORK UNDER THIS CONTRACT.

NO CHARGE FOR CONNECTIONS  
 N.F. Bravender 3-5-59



NOTES:  
 GRADES TO WHICH THE IMPROVEMENT IS TO BE CONSTRUCTED ARE SHOWN ON PLANS AND PROFILES. GRADE POINTS FOR TOP OF CURB, CENTER LINE OF STREET, OR CENTER LINE OF ALLEY ARE SHOWN BY CIRCLES ON PROFILES. AT ALL POINTS BETWEEN DESIGNATED POINTS THE GRADE SHALL BE ESTABLISHED SO AS TO COMFORM TO A STRAIGHT LINE DRAWN BETWEEN SAID DESIGNATED POINTS.  
 ELEVATIONS ARE IN FEET ABOVE U.S.C. & G.S. SEA LEVEL DATUM OF 1929.  
 THIS DRAWING AND THE DATA HEREON ARE HEREBY MADE A PART OF THE SPECIFICATIONS.  
 WORK SHALL BE CONSTRUCTED ACCORDING TO SPECIFICATIONS ON FILE IN THE OFFICE OF THE COUNTY ENGINEER AND SHALL BE PROSECUTED ONLY IN THE PRESENCE OF THE COUNTY ENGINEER.  
 BEFORE WORK CAN BE STARTED, THE CONTRACTOR MUST OBTAIN A PERMIT TO EXCAVATE IN COUNTY STREETS FROM THE L.A. COUNTY ROAD DEPT., DISTRICT OFFICE NO. 1, AND MAKE A DEPOSIT WITH THE COUNTY ENGINEER, ROOM 324 FARM ANGLICAN BUILDING, 126 SO. BRADWAY, SUFFICIENT TO COVER THE COST OF CONSTRUCTION INSPECTION AND RECORD PLANS.  
 APPROVAL OF THIS PLAN BY THE COUNTY OF LOS ANGELES DOES NOT CONSTITUTE A REPRESENTATION AS TO THE ACCURACY OF THE LOCATION OR OF THE EXISTENCE OR NON-EXISTENCE OF ANY UNDERGROUND UTILITY PIPE, OR STRUCTURE WITHIN THE LIMITS OF THIS PROJECT. THIS NOTE APPLIES TO ALL PAGES.  
 IF WORK IS TO BE DONE IN A STATE HIGHWAY, A PERMIT MUST BE OBTAINED FROM THE STATE OF CALIFORNIA, DIVISION OF HIGHWAYS, 126 SOUTH BRADWAY STREET.

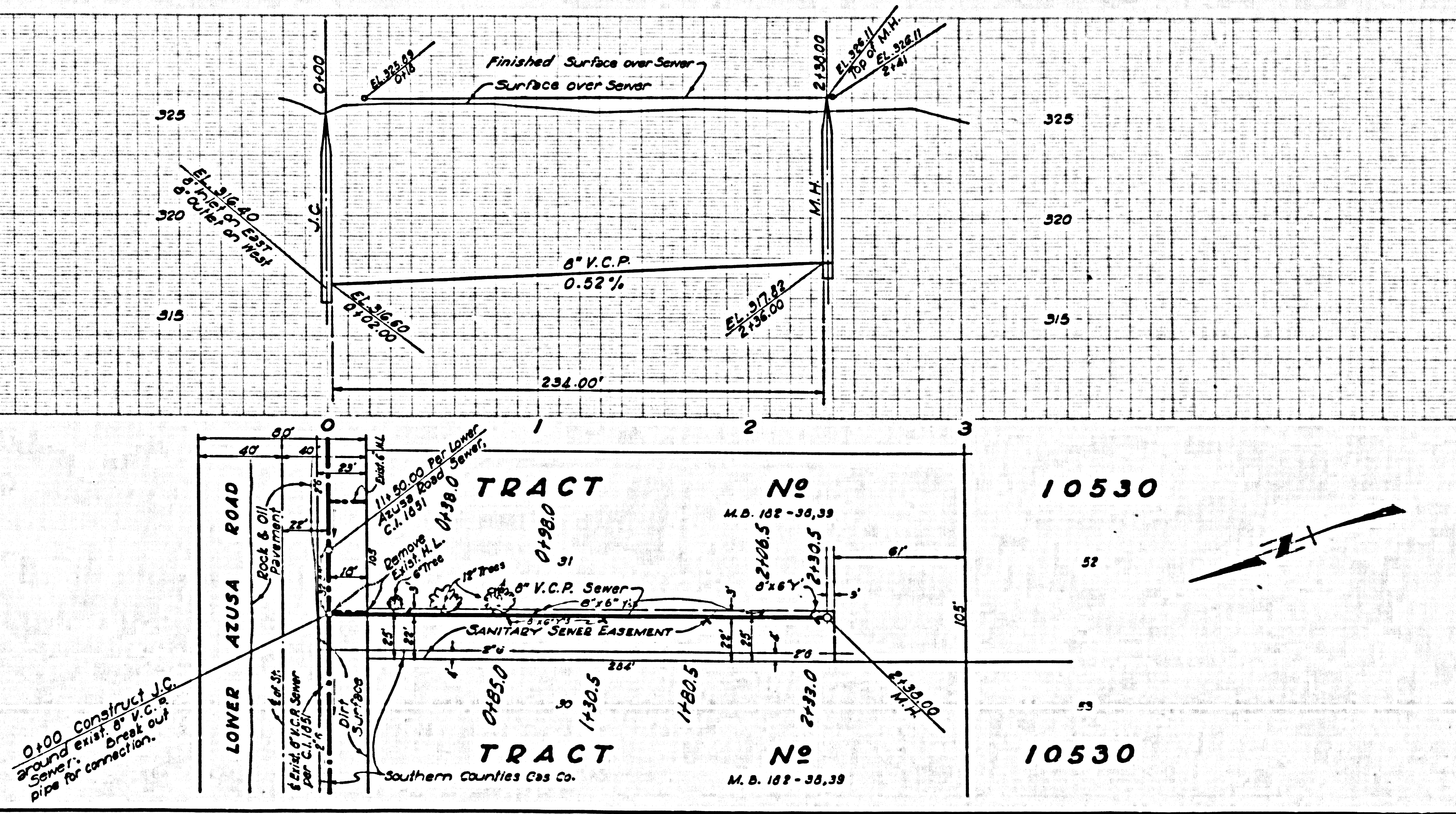
COUNTY OF LOS ANGELES, CALIFORNIA  
 APPROVED, JOHN A. LAMME, COUNTY ENGINEER  
 APPROVED, C.B. COMPTON, CHIEF ENGINEER  
 CO. SEAL NO. 15  
 BY: *A.H. Hughes* SANITATION ENGINEER  
 BY: *E.L. Demott* CHIEF ENGINEER  
 CHECKED BY: *Sk. White* 2-6-59  
 OFFICE OF COUNTY ENGINEER, R.M. C. & N. 5455

SUBMITTED: *N.F. Bravender*  
 SAN GABRIEL VALLEY REGIONAL ENGINEER

P.C. 4997 PAGE 2

NO CHARGE FOR CONNECTIONS

26865



U.S.C. & G.S. SEA LEVEL DATUM OF 1929