

TEMPLE CITY BLDG. DIST. NO. 5

PROFILE ALIGNMENT AND GRADE OF P.C. 4998
 SANITARY SEWERS PAGE 1
 TO BE CONSTRUCTED IN

SANITARY SEWER EASEMENT
 IN LOT 2, TRACT NO. 8538
 PRIVATE CONTRACT NO. 4998

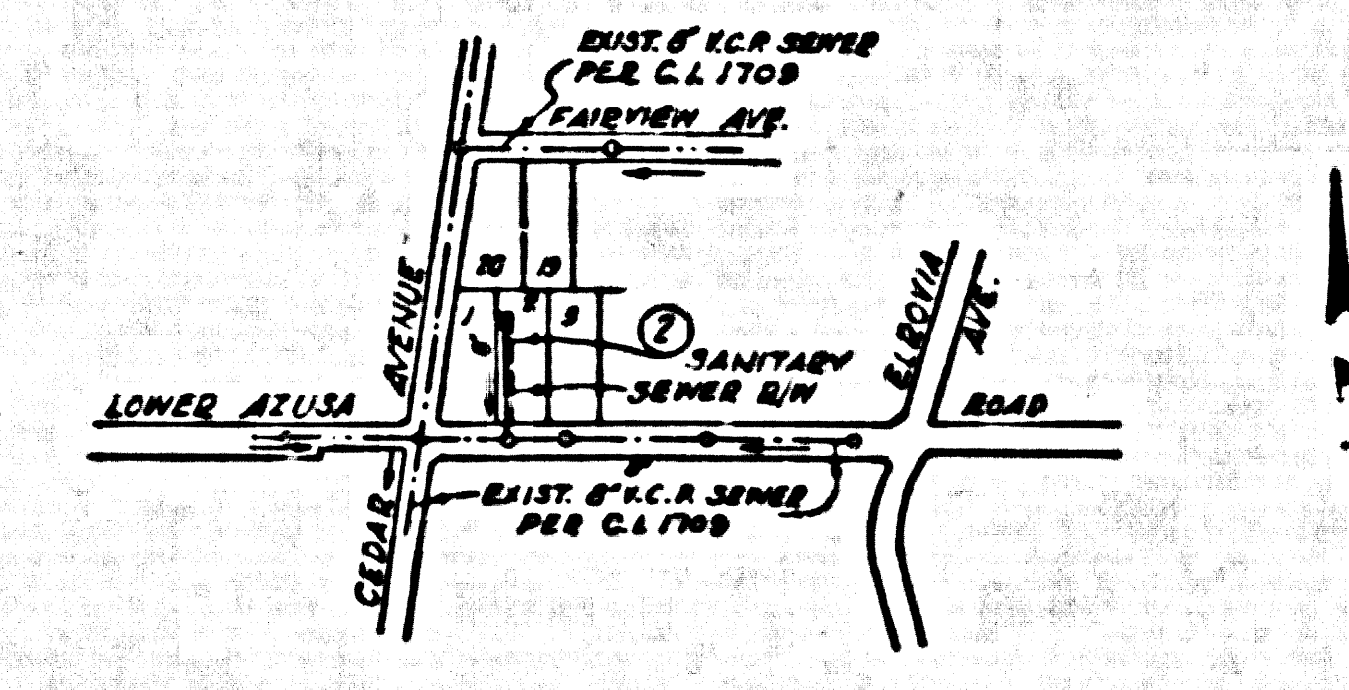
W.S. 46
 1 SHEET, 2 PAGES
 SCALE: VERT. 1"=4' HORIZ. 1"=40' JANUARY, 1959
 PREPARED IN THE OFFICES OF
 A. RICHARD BROWN, JR.
 7632 COMMONWEALTH AVE., BUENA PARK, CALIF.
 PHONE: LO 9333
 REG. C. E. NO. 3355
 FOR LEGEND SEE PLAN NO. S.A-64

26,850

BENCH MARK S.G. 283
 L.E.T. ON S.E. COR. OF CONC. SLAB 2'30"
 S. OF E. LOWER AZUSA RD. & 1'36" W.
 OF E. CEDAR AVE.
 ELEV. 318.514 BASE LINE 1955

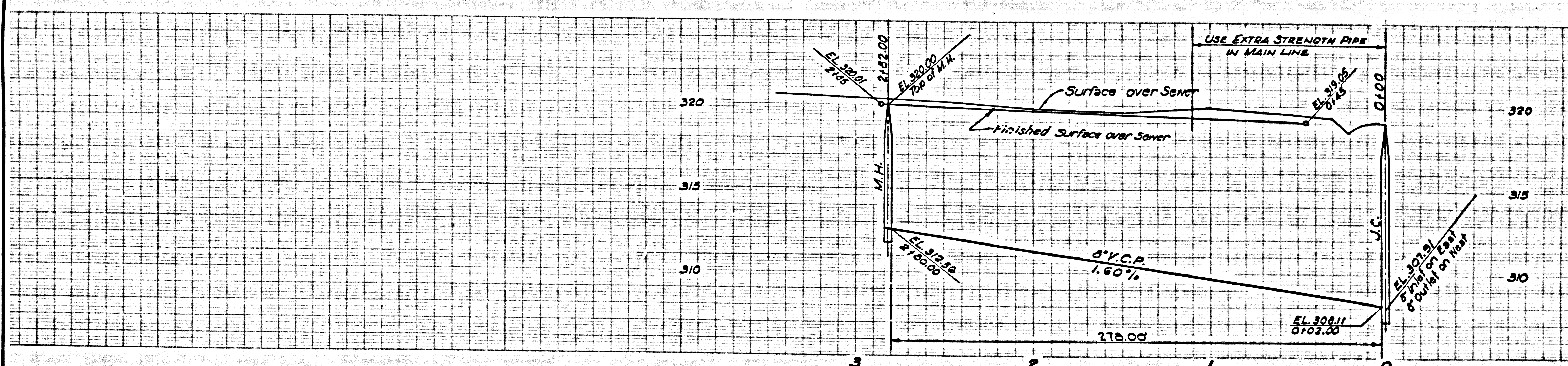
- NOTES:
1. PROVIDE STAKES C.I. THE PROPERTY LINE OR PROPERTY LINES PRODUCED AT RIGHT ANGLES TO THE SEWER LINE AT THE CENTER LINE OF EACH MANHOLE.
 2. NO REPRESENTATIVE OF THE COUNTY ENGINEER WILL SURVEY OR LAY OUT ANY PORTION OF THE WORK.
 3. THE OWNER OR HIS AUTHORIZED REPRESENTATIVE SHALL FURNISH THE COUNTY ENGINEER WITH GRADE SHEETS AND STATIONING FOR ALL HOUSE LATERALS AND Y BRANCHES AND SHALL PROVIDE STAKES FOR THESE AT THEIR PROPER LOCATIONS WITH STATIONING PLAINLY MARKED. ANY CHANGE IN LOCATION SHALL BE REQUESTED IN WRITING BY THE OWNER OR HIS REPRESENTATIVE.
 4. THE PRIVATE ENGINEER SHALL FURNISH THE HOUSE LATERAL DEPTH AT THE PROPERTY LINE BELOW IN: TOP OF CURB ELEVATION FOR EACH HOUSE LATERAL ON THE GRADE SHEET.
 5. NO REVISIONS SHALL BE MADE IN THESE PLANS WITHOUT THE APPROVAL OF THE COUNTY ENGINEER.
 6. USE STANDARD MANHOLE FRAMES AND COVERS, 6-11 1/2", EXCEPT AS NOTED.
 7. USE STANDARD STRENGTH PIPE EXCEPT AS NOTED.
 8. USE CEMENT MORTAR OR "WIDEG-LOCK" OR "SPICED-BEAT" FOR ALL V.C.P. JOINTS PER SPECS. SECT. 26 & 48.
 9. SURFACE ALL TRENCH WITHIN PAVED AREA TO MEET L.A. COUNTY ROAD DEPT. OR CALIF. STATE HIGHWAY DEPARTMENT'S IN ACCORDANCE WITH PERMITS.
 10. DISCASE FOUR FEET OF SEWER AT POINTS OF INTERFERENCE WITH POLES, CASE III, 6-6-172.
 11. ALL STRUCTURES SHALL BE BRICK SEWER STRUCTURES, 6-18", EXCEPT AS NOTED.
 12. FOR ALLOWABLE LEAKAGE TEST USE FORMULA NO. 1, SPECS., SEC. 54.
 13. MANHOLE TOPS IN UNIMPROVED RIGHTS-OF-WAY TO BE LEVEL WITH FINISHED GRADE.
 14. THE CONTRACTOR SHALL NOTIFY THE CONSTRUCTION & STORM DRAIN DIVISION BY TELEPHONE, MADISON 9-47, EXT. 365, AT LEAST TWENTY-FOUR HOURS BEFORE STARTING ANY WORK UNDER THIS CONTRACT.

NO CHARGE
 FOR CONNECTIONS
 L. Carter 2-24-59



INDEX MAP
 SCALE: 1"=500'
 P.C. 4998

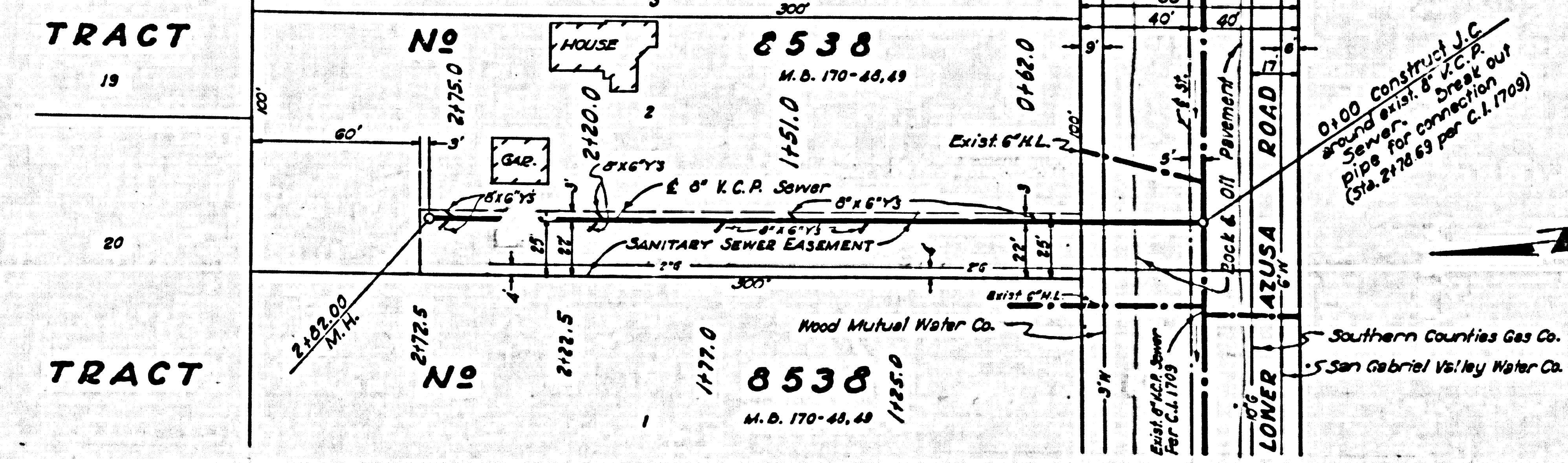
NOTES:
 GRADES TO WHICH THE IMPROVEMENT IS TO BE CONSTRUCTED ARE SHOWN ON PLANS AND PROFILES. GRADE POINTS FOR TOP OF CURBS, CENTER LINE OF SHEETS, OR CENTER LINE OF ALLEYS ARE SHOWN BY CIRCLES ON PROFILES AT ALL POINTS BETWEEN DESIGNATED POINTS THE GRADE SHALL BE ESTABLISHED SO AS TO CONFORM TO A STRAIGHT LINE DRAWN BETWEEN SAID DESIGNATED POINTS.
 ELEVATIONS ARE IN FEET ABOVE U.S.C. & G.S. SEA LEVEL DATUM OF 1929.
 THIS DRAWING AND THE DATA HEREON ARE HEREBY MADE A PART OF THE SPECIFICATIONS.
 WORK SHALL BE CONSTRUCTED ACCORDING TO SPECIFICATIONS ON FILE IN THE OFFICE OF THE COUNTY ENGINEER AND SHALL BE INSPECTED ONLY IN THE PRESENCE OF THE COUNTY ENGINEER.
 BEFORE WORK CAN BE STARTED, THE CONTRACTOR MUST OBTAIN A PERMIT TO EXCAVATE IN COUNTY STREETS FROM THE MANHOLE, 235 SO BROADWAY SUFFICIENT TO COVER THE COST OF CONSTRUCTION INSPECTION AND SECOND PLANE APPROVAL OF THIS PLAN BY THE COUNTY OF LOS ANGELES SOAS NOT CONSTITUTE A REPRESENTATION AS TO THE ACCURACY OF THE LOCATION OF OR THE EXISTENCE OF ANY UNDERGROUND UTILITY PIPE OR STRUCTURE WITHIN THE LIMITS OF THIS PROJECT. THIS NOTE APPLIES TO ALL PAGES.
 IF WORK IS TO BE DONE IN A STATE HIGHWAY, A PERMIT MUST BE OBTAINED FROM THE STATE OF CALIFORNIA, DIVISION OF HIGHWAYS, 120 SOUTH SPRING STREET.
 COUNTY OF LOS ANGELES, CALIFORNIA
 APPROVED, JOHN A. LAMBE, COUNTY ENGINEER
 APPROVED, C. E. COMPTON, CHIEF ENGINEER
 BY *L. P. Estlin* SANITATION ENGINEER
 BY *L. P. Estlin* OFFICE ENGINEER
 CHECKED BY *W. H. White*
 OFFICE OF COUNTY ENGINEER, 212 C. E. NO. 3406
 SUBMITTED: *N. F. Brannan*
 SAN GABRIEL VALLEY REGIONAL ENGINEER



P.C. 4998 PAGE 2

NO CHARGE FOR CONNECTIONS

26,851



NOTE:
 Tunneling will not be required in Lower Azusa Road. Until permanent paving can be removed, a temporary pavement will be required in accordance with the Road Dept. permit.