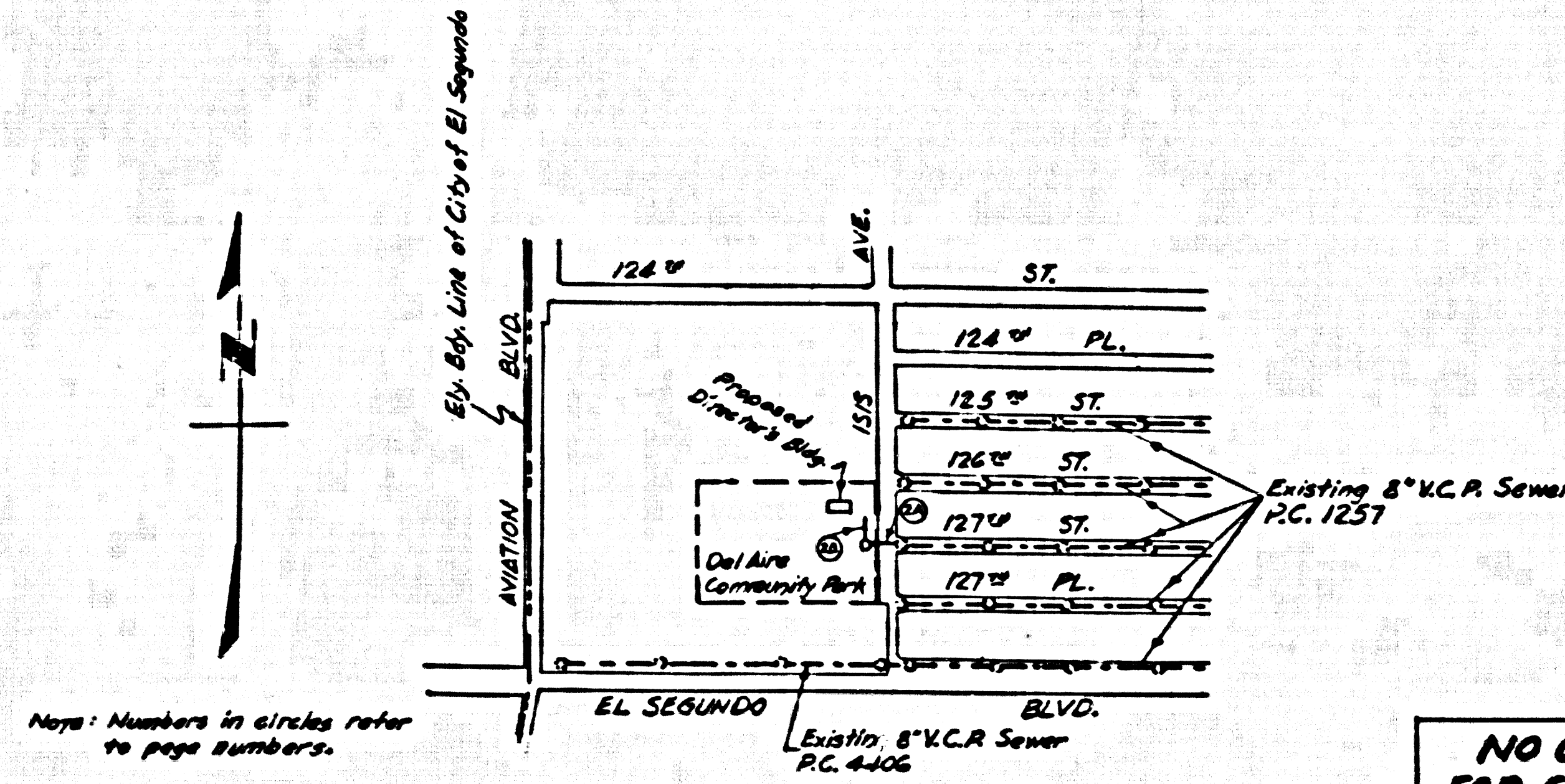


B.M. DAP1 Elev. 92.13 ft. C.S.F.B. 2311-18
P.K. nail in lead, 5 ft. East of East end of
curb return at SE cor. of Isis Ave. & 126th St.



INDEX MAP
CAPITAL PROJECT NO. 8875.06
P.C. NO. 5001
Scale: 1" = 600'

**NO CHARGE
FOR CONNECTIONS**
Arthur Slavin

LENNOX BUILDING DISTRICT NO. 7

USE STANDARD STRENGTH PIPE EXCEPT AS NOTED.
USE CEMENT MORTAR FOR ALL VITRIFIED CLAY PIPE JOINTS.
ALL STRUCTURES SHALL BE BRICK SEWER STRUCTURES AS PER PLAN NO. S-A-104, EXCEPT AS NOTED.
USE STANDARD MANHOLE FRAMES AND COVERS AS PER PLAN NO. S-A-117, EXCEPT AS NOTED.
RESURFACE TRENCH WITHIN PAVED AREA WITH PREMIX ROCK AND OR 3 INCHES IN THICKNESS EXCEPT AS NOTED ON 6 INCHES OF AGGREGATE BASE MATERIAL.
USE FORMULA NO. 1 SEC. 54 OF SPECIFICATIONS TO COMPUTE ALLOWABLE LEAKAGE.

- FIGURES IN CIRCLES AT ENDS OF HOUSE LATERALS INDICATE DEPTH BELOW CURB GRADE OR GRADE OF CENTER LINE OF STREET.
- FIGURES IN CIRCLES AT ENDS OF HOUSE LATERALS INDICATE HOUSE LATERALS SHALL BE CONSTRUCTED WITH $\frac{1}{8}$ " RISE PER FOOT TO PROPERTY LINE.
- WORDS IN CIRCLES AT ENDS OF HOUSE LATERALS INDICATE THEY SHALL BE LAID HORIZONTAL AND HOUSE LATERALS SHALL BE CONSTRUCTED WITH $\frac{1}{8}$ " RISE PER FOOT TO PROPERTY LINE.
- CONSTRUCTION IN STATE HIGHWAYS SHALL CONFORM WITH STATE HIGHWAY PERMIT.

Approval of this plan by the County of Los Angeles does not constitute a representation as to the accuracy of the location of or existence or non-existence of any underground utility pipe or structure within the limits of this project.

CAPITAL PROJECT NO. 8875.06

PROFILE, ALIGNMENT AND GRADE OF
SANITARY SEWERS
TO BE CONSTRUCTED IN
127th STREET
AND OTHER RIGHTS OF WAY
P.C. NO. 5001
PAGE 1 OF 2 PAGES

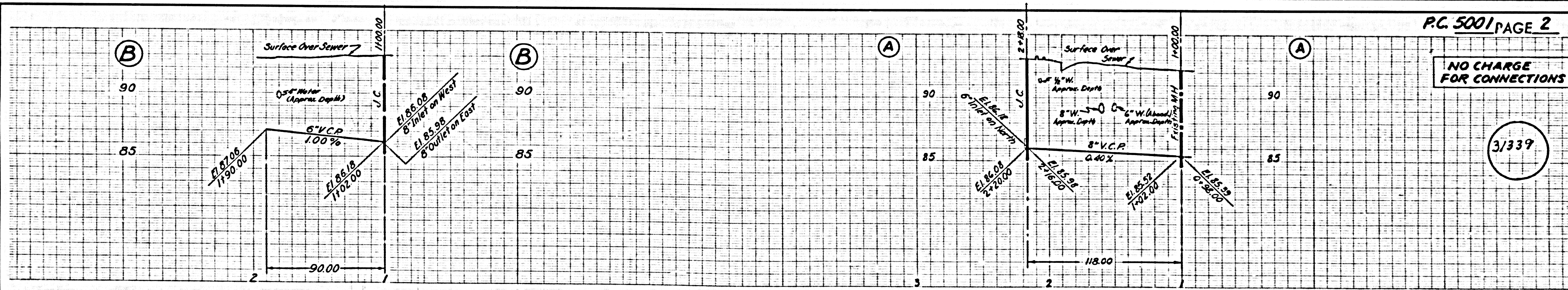
3/338

SCALE: HORIZ. 1" = 40' VERT. 1" = 4' DEC. 1959
COUNTY OF LOS ANGELES, CALIFORNIA
JOHN A. LAMBE COUNTY ENGINEER
SUBMITTED: *Arthur Slavin* DESIGN ENGINEER
APPROVED: *C. E. Pender* ASSISTANT SANITATION ENGINEER
PROJECT APPROVAL: *W. J. Johnson* BY *R. J. Paige* M. S. JOHNSON BY R. J. PAIGE
C. B. COMPTON CIVIL ENGINEER OF COUNTY SANITATION DISTRICT NO. 8
W. J. Johnson OFFICE ENGINEER

FOR LEGEND SEE PLAN NO. S-A-44

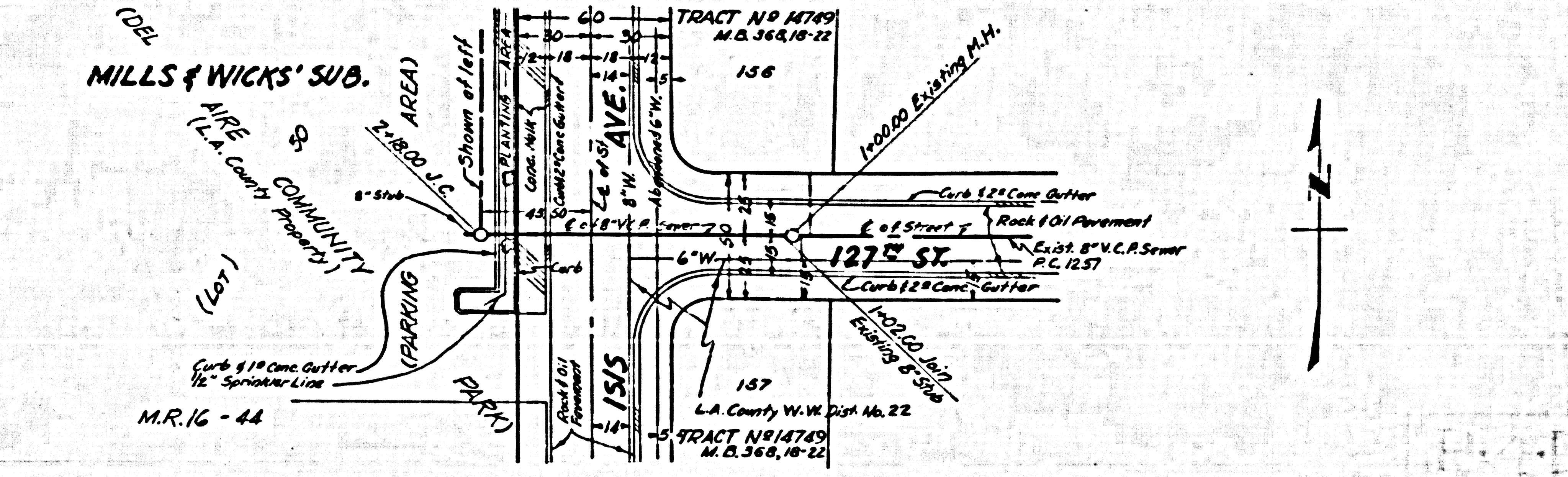
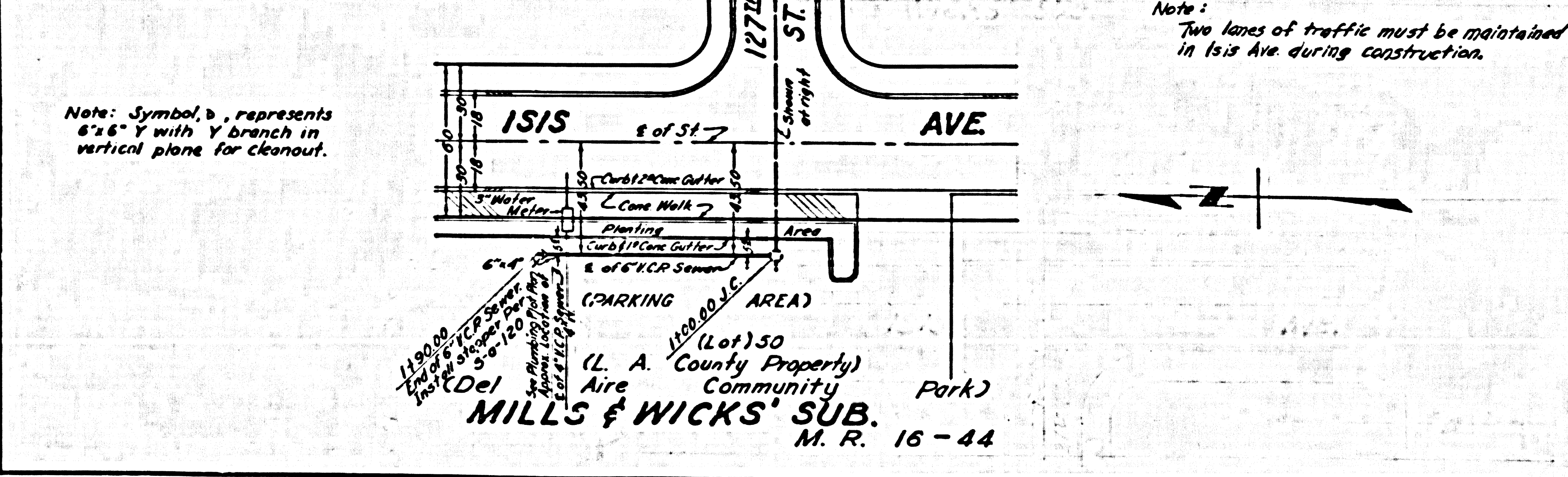
NOTES: GRADES TO WHICH THIS IMPROVEMENT IS TO BE CONSTRUCTED ARE SHOWN ON PLANS AND PROFILES. GRADE POINTS FOR TOP OF CURB, CENTER LINE OF STREET OR CENTER LINE OF ALLEY ARE INDICATED BY CIRCLES ON PROFILES AT ALL POINTS BETWEEN REGULATED POINTS THE GRADE SHALL BE ESTABLISHED SO AS TO CONFORM TO A STRAIGHT LINE DRAWN BETWEEN SAID REGULATED POINTS. SPECIFICATIONS ARE IN PART ADOPTED U.S.C. & G.S. SEA LEVEL DATUM AS OF 1929. LIMIT POINTS FOR ADDITIONAL WORK WHICH MAY BE REQUIRED BUT WHICH CANNOT BE ASCERTAINED IN ADVANCE, SHALL BE SHOWN IN THE PROFILES. THIS DRAWING AND THE DATA HEREON ARE HEREBY MADE A PART OF THE SPECIFICATIONS.

REFERENCES	DESIGNED	Schafar	Dec. 1959
W. S. 25-B-1	TRACED	Schafar	Dec. 1959
A. B. 4140-17, 20, 21	CHECKED	Yelinek	Dec. 1959
F. B. 2311-65-69			



**NO CHARGE
FOR CONNECTIONS**

3/339



P.C. NO. 5001 CAPITAL PROJECT NO. 8875.06 TRIM LINE 151.51

P.C. NO. 5001 CAPITAL PROJECT NO. 8875.06 TRIM LINE 151.51

NOTE: THIS DRAWING UTILIZED AT THE P.D.D. OF PLANS FOR SPEC. 2117 ON 953 BY ARCHITECTURAL DIVISION
C.S. 82439 / 1/2" X 36" / 1/4" 1972
U.G. CHK'D: *Rob. 12-3-59*
B.M.S. CHK'D: *12-3-59 M.V.O.*