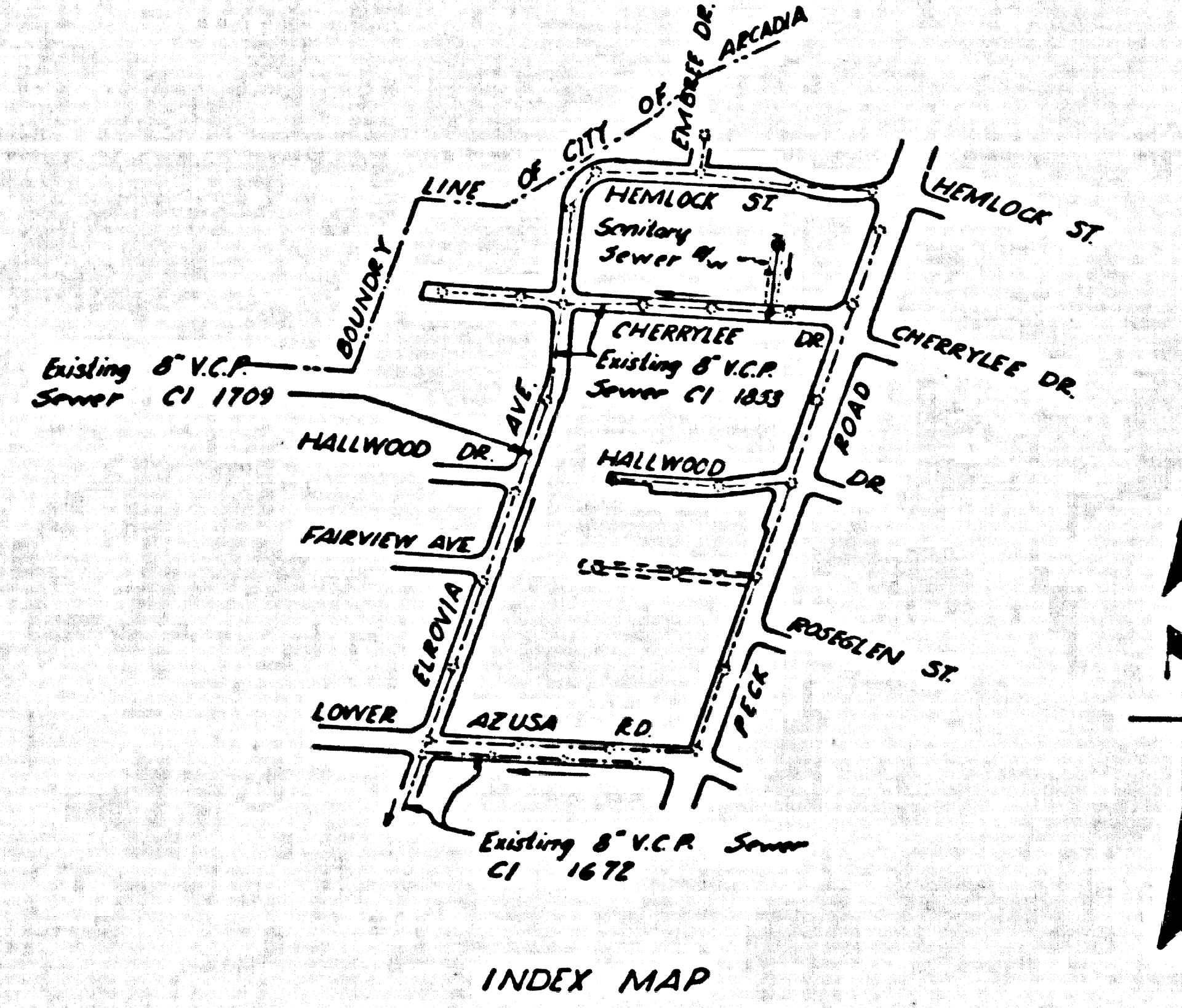


B.M. T.F. 194 Elev. 330.476 F.B. 1734 Pg 137  
 Post Rd. (E. side), 65° 2' N of Cherryline Dr. to West  
 Bl. spike in S.W. Cor. Conc. drive to Fire Station, Eng. Co. #57



Scale 1" = 600'

TEMPLE CITY BLDG. DIST. NO. 5

- NOTES:
1. PROFILE STAKES ON THE PROPERTY LINE OR PROPERTY LINES PRODUCED AT RIGHT ANGLES TO THE LINES AT THE CENTER LINE OF EACH MANHOLE.
  2. NO REPRESENTATIVE OF THE COUNTY ENGINEER WILL SURVEY OR LAY OUT ANY PORTION OF THE WORK.
  3. THE OWNER OR HIS AUTHORIZED REPRESENTATIVE SHALL FURNISH THE COUNTY ENGINEER WITH GRADE SHEETS AND STATIONING FOR ALL HOUSE LATERALS AND Y BRANCHES AND SHALL PROVIDE STAKES FOR THEM AT THEIR PROPER LOCATIONS WITH STATIONING PLAINLY MARKED. ANY CHANGE IN LOCATION SHALL BE REQUESTED IN WRITING BY THE OWNER OR HIS REPRESENTATIVE.
  4. THE PRIVATE ENGINEER SHALL FURNISH THE HOUSE LATERAL DEPTH AT THE PROPERTY LINE BELOW THE TOP OF CURB. STATIONING FOR EACH HOUSE LATERAL ON THE GRADE SHEET.
  5. NO REVISIONS SHALL BE MADE IN THESE PLANS WITHOUT THE APPROVAL OF THE COUNTY ENGINEER.
  6. USE STANDARD MANHOLE FRAMES AND COVERS, 9-6" I.D. EXCEPT AS NOTED.
  7. USE STANDARD STRENGTH PIPE EXCEPT AS NOTED.
  8. USE CEMENT MORTAR OR "WEDGE LOCK" OR "SPED-BAL" FOR ALL V.C.P. JOINTS PER SPEC'S, SECS. 10 & 11.
  9. RESURFACE ALL TRENCHES WITHIN PAVED AREA TO MEET L.A. COUNTY ROAD DEPT. OR CALIF. STATE HIGHWAY REQUIREMENTS IN ACCORDANCE WITH PERMITS.
  10. INCASE FOUR FEET OF SEWER AT POINTS OF INTERFERENCE WITH POLES, CABLE, ETC., 8-6-172.
  11. HOUSE LATERALS TO BE CONSTRUCTED WITH INVERTS AT PROPERTY LINE. SEE GRADE SHEET FOR DETAILS.
  12. ALL STRUCTURES SHALL BE BRICK SEWER STRUCTURES, 8-6" I.D. EXCEPT AS NOTED.
  13. FOR ALLOWABLE LEAKAGE TEST USE FORMULA NO. 1 - SPEC'S, SEC. 54.
  14. MANHOLE TOPS IN UNIMPROVED SECTIONS OF WAYS TO BE SIX INCHES ABOVE FINISHED GRADE.
  15. THE CONTRACTOR SHALL NOTIFY THE CONSTRUCTION & SYSTEMS DIVISION BY TELEPHONE, HANDBOOK 9-6-57, EXT. 343, AT LEAST TWENTY FOUR HOURS BEFORE STARTING ANY WORK UNDER THIS CONTRACT.

NO CHARGE FOR CONNECTIONS  
 7. 7/10/57

PROFILE ALIGNMENT AND GRADE OF P.C. 5005  
 SANITARY SEWERS PAGE 1  
 TO BE CONSTRUCTED IN

SANITARY SEWER EASEMENT IN LOTS 4 AND 5, TRACT NUMBER 10745  
 PRIVATE CONTRACT NO. 5005

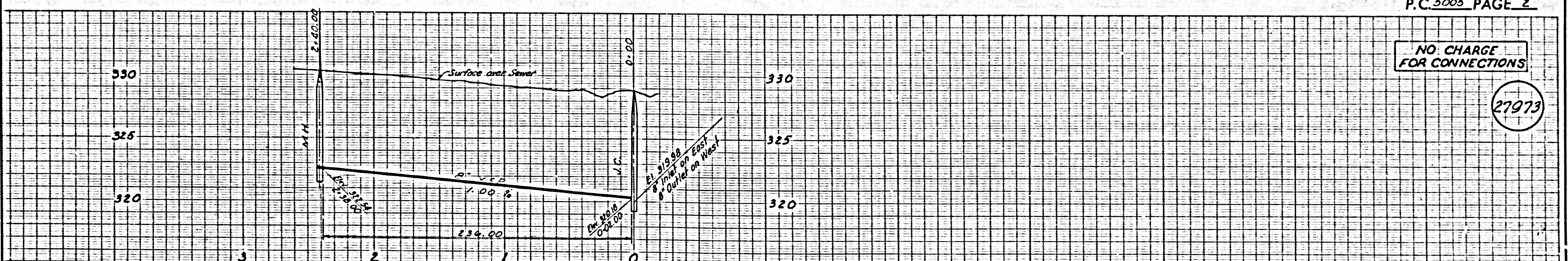
W.S. 46  
 1 SHEET, 2 PAGES  
 SCALE: 1" = 40' DECEMBER, 1958  
 PREPARED IN THE OFFICES OF

FOR LEGEND SEE PLAN NO. S-A-64

NOTES:  
 GRADES TO WHICH THIS IMPROVEMENT IS TO BE CONSTRUCTED ARE SHOWN ON PLANS AND PROFILES. GRADE POINTS FOR TOP OF CURB, CENTER LINE OF SIDEWALKS, OR CENTER LINE OF ALLEYS ARE SHOWN BY CIRCLES ON PROFILES AT ALL POINTS BETWEEN DESIGNATED POINTS. THE GRADE SHALL BE ESTABLISHED SO AS TO CONFORM TO A STRAIGHT LINE DRAWN BETWEEN SAID DESIGNATED POINTS.  
 ELEVATIONS ARE IN FEET ABOVE U.S.C. & G.S. MEAN SEAS LEVEL OF 1929.  
 THESE DRAWINGS AND THE DATA HEREON ARE HEREBY MADE A PART OF THE SPECIFICATIONS.  
 WORK SHALL BE CONSTRUCTED ACCORDING TO SPECIFICATIONS ON FILE IN THE OFFICE OF THE COUNTY ENGINEER AND SHALL BE PROSECUTED ONLY IN THE PRESENCE OF THE COUNTY ENGINEER.  
 BEFORE WORK CAN BE STARTED, THE CONTRACTOR MUST OBTAIN A PERMIT TO EXCAVATE IN COUNTY STREETS FROM THE L.A. COUNTY ROAD DEPT., DISTRICT OFFICE NO. 1, AND MAKE A DEPOSIT WITH THE COUNTY ENGINEER, ROOM 384 MAIN AMERICAN BUILDING, 215 SO. BROADWAY, SUFFICIENT TO COVER THE COST OF CONSTRUCTION INSPECTION AND RECORD PLANS.  
 APPROVAL OF THIS PLAN BY THE COUNTY OF LOS ANGELES DOES NOT CONSTITUTE A REPRESENTATION AS TO THE ACCURACY OF THE LOCATION OR OF THE EXISTENCE OR NON-EXISTENCE OF ANY UNRECORDED RIGHTS, PIPES, OR STRUCTURES WITHIN THE LIMITS OF THIS PROJECT. THIS NOTE APPLIES TO ALL PAGES.  
 IF WORK IS TO BE DONE IN A STATE HIGHWAY, A PERMIT MUST BE OBTAINED FROM THE STATE OF CALIFORNIA, DIVISION OF HIGHWAYS, 120 SOUTH SPRING STREET.

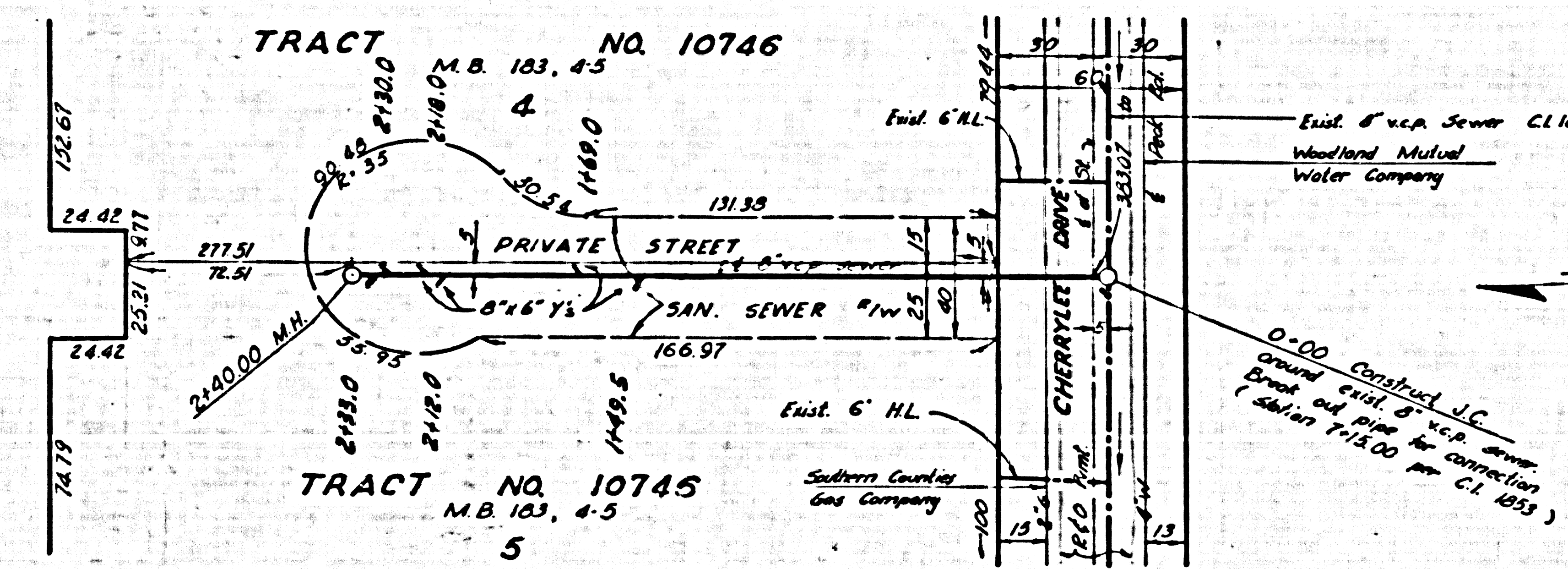
COUNTY OF LOS ANGELES, CALIFORNIA  
 APPROVED, JOHN A. LAMBE, COUNTY ENGINEER  
 APPROVED, C. R. COMPTON, CHIEF ENGINEER  
 BY [Signature] SANITATION ENGINEER  
 CHECKED BY [Signature] OFFICE OF COUNTY ENGINEER, S.E.C. NO. 9406

P.C. 5005 PAGE 2



NO CHARGE FOR CONNECTIONS

27973



BC 2002