

B.M. 5Y 2859 EL. 43.575 (1955) Gardena Quad.
 L.A.B.N. N. side conc. base of signal lights
 ± 50' W. E. Broadway ± 45' S. E. Olive St.

LENNOX BLDG. DIST. NO. 7

PROFILE ALIGNMENT AND GRADES OF P.C. 5006
 SANITARY SEWERS PAGE 1
 TO BE CONSTRUCTED IN
 BROADWAY (26,738)

PRIVATE CONTRACT NO. 5006

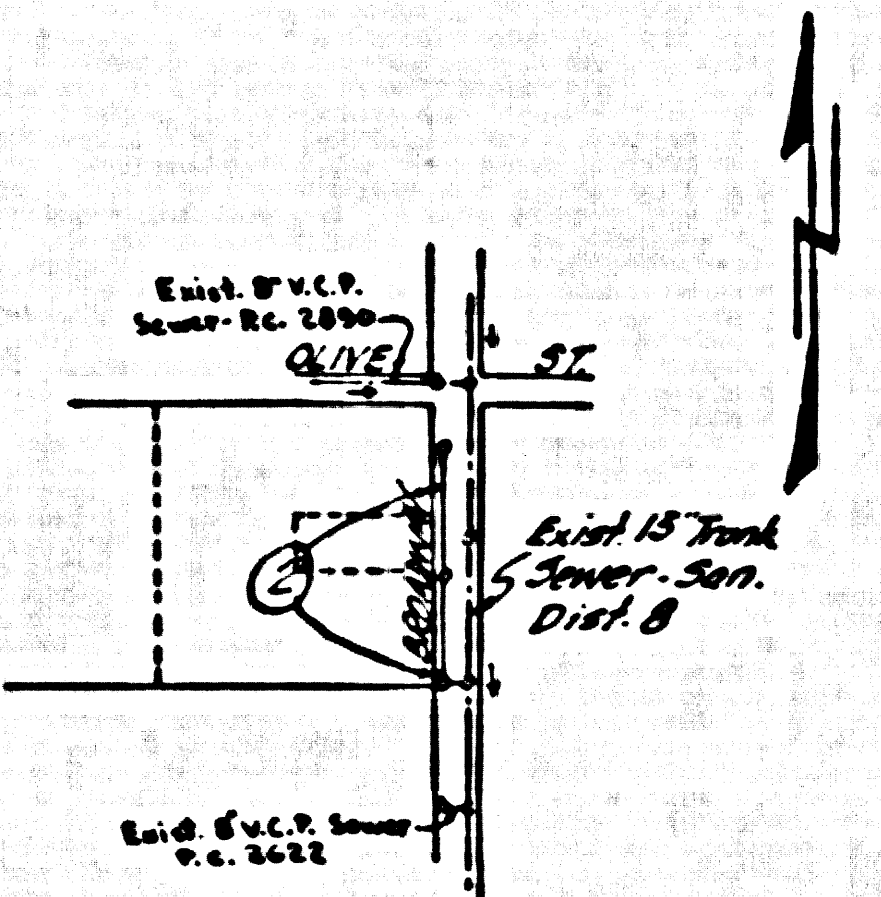
W.S. 26
 1 SHEET, 2 PAGES

SCALE: VERT. 1" = 4' HORIZ. 1" = 40'
 DEC. 1958
 PREPARED IN THE OFFICES OF
 OLSON SURVEYING SERVICE

By: *Charles Olson*
 No. C. E. No. 7223

FOR LEGEND SEE PLAN NO. S-A-64

- NOTES
1. PROFILE STAGES ON THE PROPERTY LINE OR PROPERTY LINES PRODUCED AT RIGHT ANGLES TO THE SEWER LINE AT THE CENTER LINE OF EACH BRANCHING.
 2. NO REPRESENTATIVE OF THE COUNTY ENGINEER WILL SURVEY OR LAY OUT ANY PORTION OF THE WORK.
 3. THE OWNER OR HIS AUTHORIZED REPRESENTATIVE SHALL FURNISH THE COUNTY ENGINEER WITH GRADE SHEETS AND STATIONING FOR ALL HOUSE LATERALS AND Y BRANCHES AND SHALL PROVIDE STAKES FOR THEM AT THEIR PROPER LOCATIONS WITH STATIONING PLAINLY MARKED. ANY CHANGE IN LOCATION SHALL BE REQUESTED IN WRITING BY THE OWNER OR HIS REPRESENTATIVE.
 4. THE PRIVATE ENGINEER SHALL FURNISH THE HOUSE LATERAL DEPTH AT THE PROPERTY LINE SHOWING THE TOP OF LENS REVISION FOR EACH HOUSE LATERAL ON THE GRADE SHEET.
 5. NO REVISIONS SHALL BE MADE IN THESE PLANS WITHOUT THE APPROVAL OF THE COUNTY ENGINEER.
 6. USE STANDARD MANHOLE FRAMES AND COVERS, S-117, EXCEPT AS NOTED.
 7. USE CENTRAL STRENGTH PIPE.
 8. USE CAMBIE MONITOR OR "WEDGE-LOCK" OR "SPRIG-SEAL" FOR ALL V.C.P. JOINTS PER SPEC'S, SECT. 20 & 21.
 9. RESURFACE ALL TRENCH WITHIN PAVED AREA TO MEET L.A. COUNTY ROAD DEPT. OR CALIF. STATE HIGHWAY REQUIREMENTS IN ACCORDANCE WITH PERMITS.
 10. EXPOSE FOUR FEET OF SEWER AT POINTS OF INTERFERENCE WITH POLES, CASE III, S-117.
 11. HOUSE LATERALS TO BE CONSTRUCTED WITH INVERTS AT PROPERTY LINE ± 6" FEET BELOW CURB GRADE EXCEPT AS NOTED.
 12. ALL STRUCTURES SHALL BE BRICK SEWER STRUCTURES, S-104, EXCEPT AS NOTED.
 13. FOR ALLOWABLE LEAKAGE TEST USE FORMULA NO. 100, SPEC'S, SEC. 24.
 14. MANHOLE TOPS IN UNPAVED AREAS SHALL BE 24" HIGHER ABOVE FINISHED GRADE.
 15. THE CONTRACTOR SHALL NOTIFY THE CONSTRUCTION & STORM DRAIN DIVISION BY TELEPHONE, HANDBOOK S-412, LET. 162, AT LEAST TWENTY-FOUR HOURS BEFORE STARTING ANY WORK UNDER THIS CONTRACT.



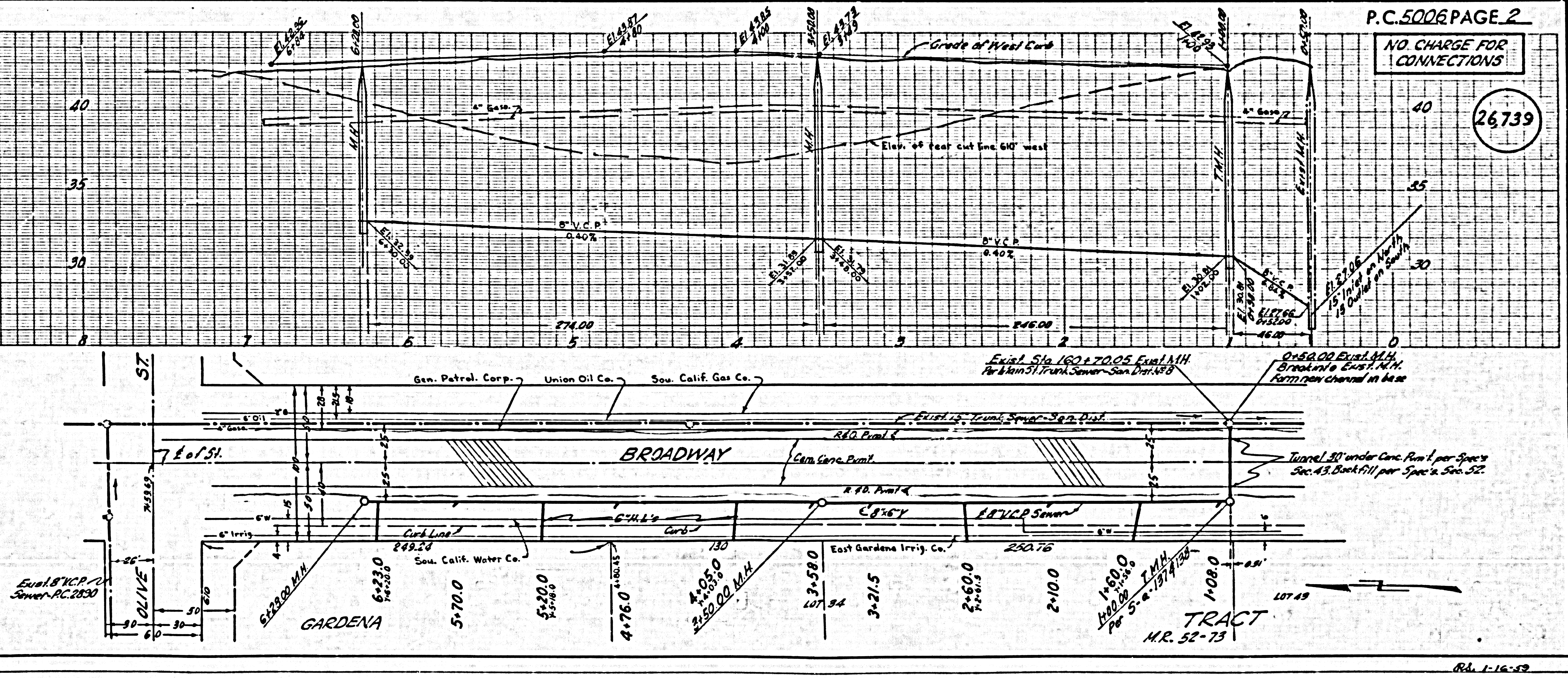
NO CHARGE FOR CONNECTIONS
Carl P. Brown 1/15/59

NOTES
 GRADES TO WHICH THIS IMPROVEMENT IS TO BE CONSTRUCTED ARE SHOWN ON PLANS AND PROFILE. GRADE POINTS FOR TOP OF CURB, CENTER LINE OF STREETS, OR CENTER LINE OF ALLEYS ARE SHOWN BY CIRCLES ON PROFILES AT ALL POINTS BETWEEN DESIGNATED POINTS THE GRADE SHALL BE ESTABLISHED SO AS TO COMPARE TO A STRAIGHT LINE DRAWN BETWEEN SAID DESIGNATED POINTS.
 ELEVATIONS ARE IN FEET ABOVE U.S.C. & G.S. MEAN SEA LEVEL UNLESS OTHERWISE NOTED.
 THIS DRAWING AND THE DATA HEREON ARE HEREBY MADE A PART OF THE SPECIFICATIONS WHICH SHALL BE CONSTRUCTED ACCORDING TO SPECIFICATIONS ON FILE IN THE OFFICE OF THE COUNTY ENGINEER AND SHALL BE PROSECUTED IN THE INTEREST OF THE COUNTY ENGINEER.
 BEFORE WORK CAN BE STARTED, THE CONTRACTOR MUST OBTAIN A PERMIT TO EXCAVATE IN COUNTY EROSION FROM THE L.A. COUNTY SOILS DEPT., DISTRICT OFFICE NO. 1, AND MAKE A DEPOSIT WITH THE COUNTY ENGINEER, ROOM 224 PAVAN ARCADE BUILDING, 330 SO. BROADWAY SUBJECT TO THE COST OF CONSTRUCTION INSPECTION AND RECORD PLANS.
 APPROVAL OF THIS PLAN BY THE COUNTY OF LOS ANGELES DOES NOT CONSTITUTE A REPRESENTATION AS TO THE ACCURACY OF THE LOCATION OR OF THE EXISTENCE OR NON-EXISTENCE OF ANY UNDERGROUND UTILITY PIPE, OR STRUCTURE WITHIN THE LIMITS OF THIS PROJECT. THIS NOTE APPLIES TO ALL PAGES.
 IF WORK IS TO BE DONE IN A STAIN EXPOSURE, A PERMIT MUST BE OBTAINED FROM THE STATE OF CALIFORNIA, DIVISION OF HIGHWAYS, 120 SOUTH SPRING STREET.

COUNTY OF LOS ANGELES, CALIFORNIA

APPROVED, JOHN A. LAMBE, COUNTY ENGINEER
 APPROVED, C. E. COMPTON, CHIEF ENGINEER
 BY: *John A. Lambe* (Signature)
 BY: *C. E. Compton* (Signature)
 CHECKED BY: *Samuel K. Oide 1-15-59*
 OFFICE OF COUNTY ENGINEER, SEC. 2 & E. NO. 2342

APPROVED, INDUSTRIAL WASTE DIVISION
 BY: *Samuel K. Oide 1/15/59*



P.C. 5006 PAGE 2
 NO CHARGE FOR CONNECTIONS
 (26,738)

TRACT
 M.R. 52-73

Rev. 1-16-59