

PUENTE BLDG. DIST. NO. 2

PROFILE ALIGNMENT AND GRADE OF P.C. 5008
 SANITARY SEWERS PAGE 1
 TO BE CONSTRUCTED IN
TRACT 24602

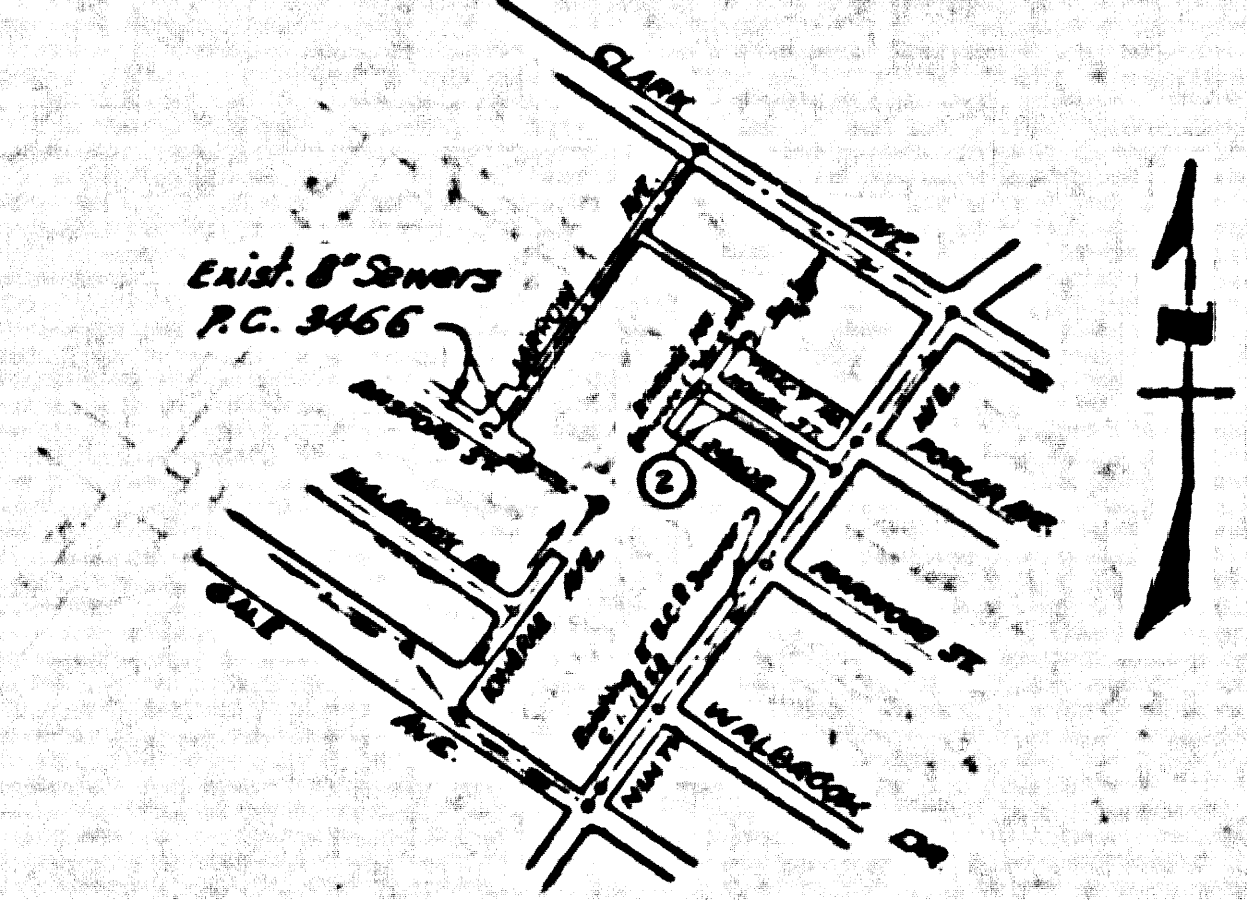
PRIVATE CONTRACT NO. 5008
 W.S. 37
 SHEET, 2 PAGES
 SCALE: VERT. 1" = 4' HORIZ. 1" = 40'
 DATE: December, 1958
 PREPARED IN THE OFFICES OF
Pond ENGINEERS CO.
 By: *Marshall C. Pond*
 REG. C. E. NO. 8292
 FOR LEGEND SEE PLAN NO. S-A-64

- NOTES
1. PROFILE STAKES ON THE PROPERTY LINE OR PROPERTY LINES PRODUCED AT RIGHT ANGLES TO THE SEWER LINE AT THE CENTER LINE OF EACH MANHOLE.
 2. NO REPRESENTATIVE OF THE COUNTY ENGINEERS WILL SURVEY OR LAY OUT ANY PORTION OF THE WORK.
 3. THE OWNER OR HIS AUTHORIZED REPRESENTATIVE SHALL FURNISH THE COUNTY ENGINEERS WITH GRADE SHEETS AND STATIONING FOR ALL HOUSE LATERALS AND Y BRANCHES AND SHALL PROVIDE STAKES FOR THEM AT THEIR PROPER LOCATIONS WITH STATIONING PLAINLY MARKED. ANY CHANGE IN LOCATION SHALL BE REQUESTED IN WRITING BY THE OWNER OR HIS REPRESENTATIVE.
 4. THE PRIVATE ENGINEERS SHALL FURNISH THE HOUSE LATERAL DEPTH AT THE PROPERTY LINE BELOW THE TOP OF CURB ELEVATION FOR EACH HOUSE LATERAL ON THE GRADE SHEET.
 5. NO REVISIONS SHALL BE MADE IN THESE PLANS WITHOUT THE APPROVAL OF THE COUNTY ENGINEER.
 6. USE STANDARD MANHOLE FRAMES AND COVERS, S-117, EXCEPT AS NOTED.
 7. USE STANDARD STRENGTH PIPE EXCEPT AS NOTED.
 8. USE CEMENT MORTAR OR "WEDGE-LOCK" OR "SPYER SEAL" FOR ALL V.C.P. JOINTS PER SPEC. SECS. 56 & 61.
 9. RESURFACE ALL TRENCH WITHIN PAVED AREA TO MEET L.A. COUNTY ROAD DEPT. CALIF. STATE HIGHWAY REQUIREMENTS IN ACCORDANCE WITH PERMITS.
 10. ENCASE PLUMB FEET OF SEWER AT POINTS OF INTERFERENCE WITH POLES, CABLES, ETC. PER SPEC. SEC. 56-172.
 11. HOUSE LATERALS TO BE CONSTRUCTED WITH INVERTS AT PROPERTY LINE... FEET BELOW CURB GRADE EXCEPT AS NOTED.
 12. ALL STRUCTURES SHALL BE BRICK SEWER STRUCTURES, S-104, EXCEPT AS NOTED.
 13. FOR ALLOWABLE LEAKAGE TEST USE FORMULA NO. 1, SPEC. S. SEC. 61.
 14. REMOVED TOPS IN UNIMPROVED RIGHTS OF WAY TO BE SIX INCHES ABOVE FINISHED GRADE.
 15. THE CONTRACTOR SHALL NOTIFY THE CONSTRUCTION & SPERM DIVISION BY TELEPHONE, HARBOR 6-610, EXT. 246, AT LEAST TWENTYFOUR HOURS BEFORE STARTING ANY WORK UNDER THIS CONTRACT.

B.M. - SG 1341, Elev. 330.448 (Base Line 1955)
 Gale Ave. & Ninth Ave., N.E. corner.
 Spk. & Lead ± 4' E of end of cb, Mkd. A228.

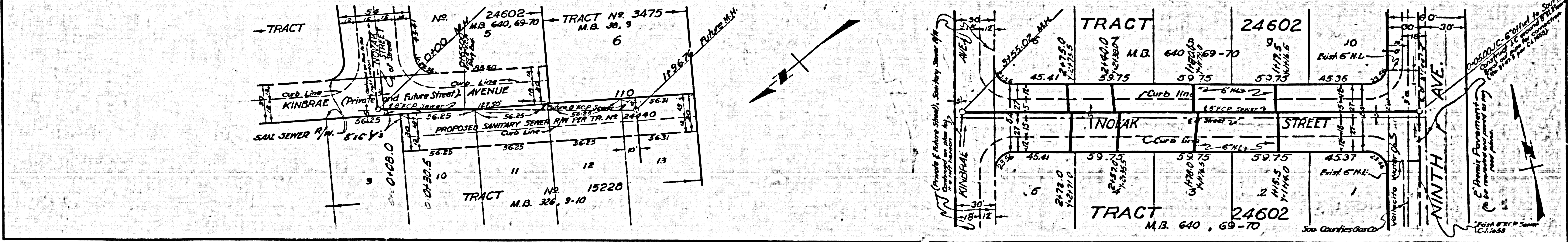
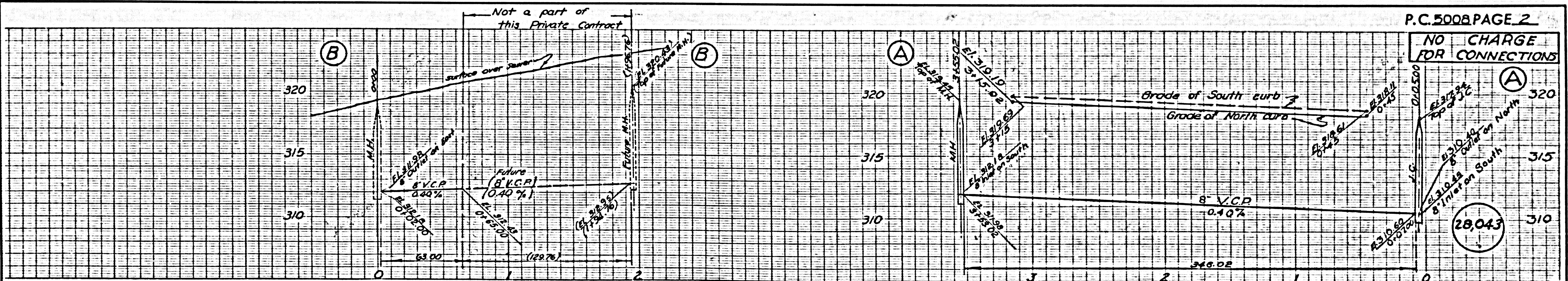
REVISED JULY 7, 1959.
 1. Moved M.H. in View "A" to Sta. 3155.02
 2. Added View "B"
Marshall C. Pond
 Marshall C. Pond R.E. 8292
 Approved *J. G. Wade* 7-8-59
 Office of County Engineer, Reg. C.E. 246

NO CHARGE FOR CONNECTIONS
 7-27-59 Revised 3-19-59



INDEX MAP
 SCALE 1" = 600'
 TRACT NO. 24602
 P.C. 5008

NOTES
 GRADES TO WHICH THIS IMPROVEMENT IS TO BE CONSTRUCTED ARE SHOWN ON PLANS AND PROFILE. GRADE POINTS FOR TOP OF CURB, CENTER LINE OF STREET, OR CENTER LINE OF ALLEY ARE SHOWN BY CIRCLES ON PROFILES. AT ALL POINTS BETWEEN REGULATED POINTS THE GRADE SHALL BE ESTABLISHED SO AS TO CONFORM TO A STRAIGHT LINE DRAWN BETWEEN SAID REGULATED POINTS.
 ELEVATIONS ARE IN FEET ABOVE U.S.C. & G.S. SEA LEVEL DATUM OF 1929.
 THE MEASUREMENTS AND THE DATA HEREON ARE HEREBY MADE A PART OF THE SPECIFICATIONS.
 BEFORE WORK CAN BE STARTED, THE CONTRACTOR MUST OBTAIN A PERMIT TO EXCAVATE IN CURB STREETS FROM THE L.A. COUNTY ROAD DEPT., DISTRICT OFFICE NO. 2, AND MAKE A DEPOSIT WITH THE COUNTY ENGINEER, ROOM 234 PAN AMERICAN BUILDING, 128 SO. SPRING STREET, TO COVER THE COST OF CONSTRUCTION INSPECTION AND RECORD PLANS.
 APPROVAL OF THIS PLAN BY THE COUNTY OF LOS ANGELES DOES NOT CONSTITUTE A REPRESENTATION AS TO THE ACCURACY OF THE LOCATION OR THE EXISTENCE OR NON-EXISTENCE OF ANY UNDERGROUND UTILITY PIPE, OR STRUCTURE WITHIN THE LIMITS OF THIS PROJECT. THIS NOTE APPLIES TO ALL PAGES.
 IF WORK IS TO BE DONE IN A STATE HIGHWAY, A PERMIT MUST BE OBTAINED FROM THE STATE OF CALIFORNIA, DIVISION OF HIGHWAYS, 128 SOUTH SPRING STREET.
 COUNTY OF LOS ANGELES, CALIFORNIA
 APPROVED: JOHN A. LAMME, COUNTY ENGINEER APPROVED: C. R. COMPTON, CHIEF ENGINEER
 BY: *John A. Lamme* BY: *C. R. Compton*
 CHECKED BY: *J. G. Wade* 3-19-59 OFFICE ENGINEER
 OFFICE OF COUNTY ENGINEER, REG. C. E. NO. 3646
 SUBMITTED: *N. F. Branner*
 SAN GABRIEL VALLEY REGIONAL ENGINEER



P.C. 5008 PAGE 2

NO CHARGE FOR CONNECTIONS

28,043

82208