

INDEX MAP
SCALE 1" = 200'
TRACT NO. 24467
P.C. 5009

PARAMOUNT BLDG. DIST. NO. 4.04

- NOTES:
1. PRIVATE STAKES ON THE PROPERTY LINE OR PROPERTY LINES PRODUCED AT RIGHT ANGLES TO THE SEWER LINE AT THE CENTER LINE OF EACH MANHOLE.
 2. NO REPRESENTATIVE OF THE CITY ENGINEER WILL SURVEY OR LAY OUT ANY PORTION OF THE WORK.
 3. THE OWNER OR HIS AUTHORIZED REPRESENTATIVE SHALL FURNISH THE CITY ENGINEER WITH GRADE SHEETS AND STATIONING FOR ALL HOUSE LATERALS AND Y BRANCHES AND SHALL PROVIDE STAKES FOR THEM AT THEIR PROPER LOCATIONS WITH EIGHT-FOOTING PLAIN MARKS. ANY CHANGE IN LOCATION SHALL BE REQUESTED IN WRITING BY THE OWNER OR HIS REPRESENTATIVE.
 4. THE PRIVATE ENGINEER SHALL FURNISH THE HOUSE LATERAL SHEET AT THE PROPERTY LINE BELOW THE TOP OF CURB SHEET FOR EACH HOUSE LATERAL ON THE GRADE SHEET.
 5. NO REVISIONS SHALL BE MADE IN THESE PLANS WITHOUT THE APPROVAL OF THE CITY ENGINEER.
 6. USE STANDARD MANHOLE FRAMES AND COVERS, 5'-0" DIA., EXCEPT AS NOTED.
 7. USE STANDARD STRENGTH PIPE 18" DIA. 12' LENGTHS.
 8. RESURFACE ALL TERRACE WITHIN PAVED AREA TO MEET L.A. COUNTY ROAD DEPT. OR CALIF. STATE HIGHWAY REQUIREMENTS IN ACCORDANCE WITH PERMITS.
 9. ENCASE FOUR FEET OF SEWER AT POINTS OF INTERFERENCE WITH POLES, CASE IN, 5'-0" DIA.
 10. HOUSE LATERALS TO BE CONSTRUCTED WITH INVERTS AT PROPERTY LINE 6" FEET BELOW CURB GRADE EXCEPT AS NOTED.
 11. ALL STRUCTURES SHALL BE BRICK SEWER STRUCTURES, 5'-0" DIA., EXCEPT AS NOTED.
 12. FOR ALLOWABLE LEAKAGE TEST USE FORMULA NO. 1, SPEC. SEC. 24.
 13. MANHOLE TOPS IN UNIMPROVED RIGHTS-OF-WAY TO BE SIX INCHES ABOVE FINISHED GRADE.
 14. THE CONTRACTOR SHALL NOTIFY THE CONSTRUCTION & STORM DRAIN DIVISION BY TELEPHONE, MADISON 5-40, EXT. 242, AT LEAST TWENTY-FOUR HOURS BEFORE STARTING ANY WORK UNDER THIS CONTRACT.
 15. ALL THE LOCATIONS SHOWN FOR EXISTING STRUCTURES HAVE BEEN OBTAINED FROM RECORDS AND THEIR CORRECTNESS AND COMPLETENESS IS IN NO WAY GUARANTEED. IT SHALL BE THE CONTRACTOR'S RESPONSIBILITY ALONE TO DEFINITELY LOCATE ALL UNDERGROUND LINES OF EVERY NATURE WHETHER SHOWN HEREON OR NOT, AND PROTECT THEM FROM DAMAGE. THE CONTRACTOR SHALL BEAR THE TOTAL EXPENSE OF REPAIR TO ANY LINES DAMAGED BY ANY OPERATION IN CONNECTION WITH THE PRODUCTION OF THIS WORK.
 16. USE JOINT COMPOUND "INDUS-LOCK" OR "UNION-SEAL" FOR ALL INTERFERENCE CLAY PIPE JOINTS PER SPEC. SEC. 25, 26 & 28 AT JOINTS WITH 18" UNCOMPOUNDED PIPE AND PER PARTS & SUBSTITUTES, "INDUS-LOCK" OR "UNION-SEAL"; FOR ALL JOINTS PER SPEC. SEC. 24, 25, 26 & 28.

before breaking into any existing structure and before final acceptance of this work, County Sanitation District should be notified in order that required inspection may be made.

BENCH MARK
SY 3000 Elev. 71.345' (1955)
2 1/2" dia. in concrete, 4" dia. C.I. 22
& Compton Blvd. opp. to House
No. 8137, Compton Blvd. C-23
(Norwalk Quad)

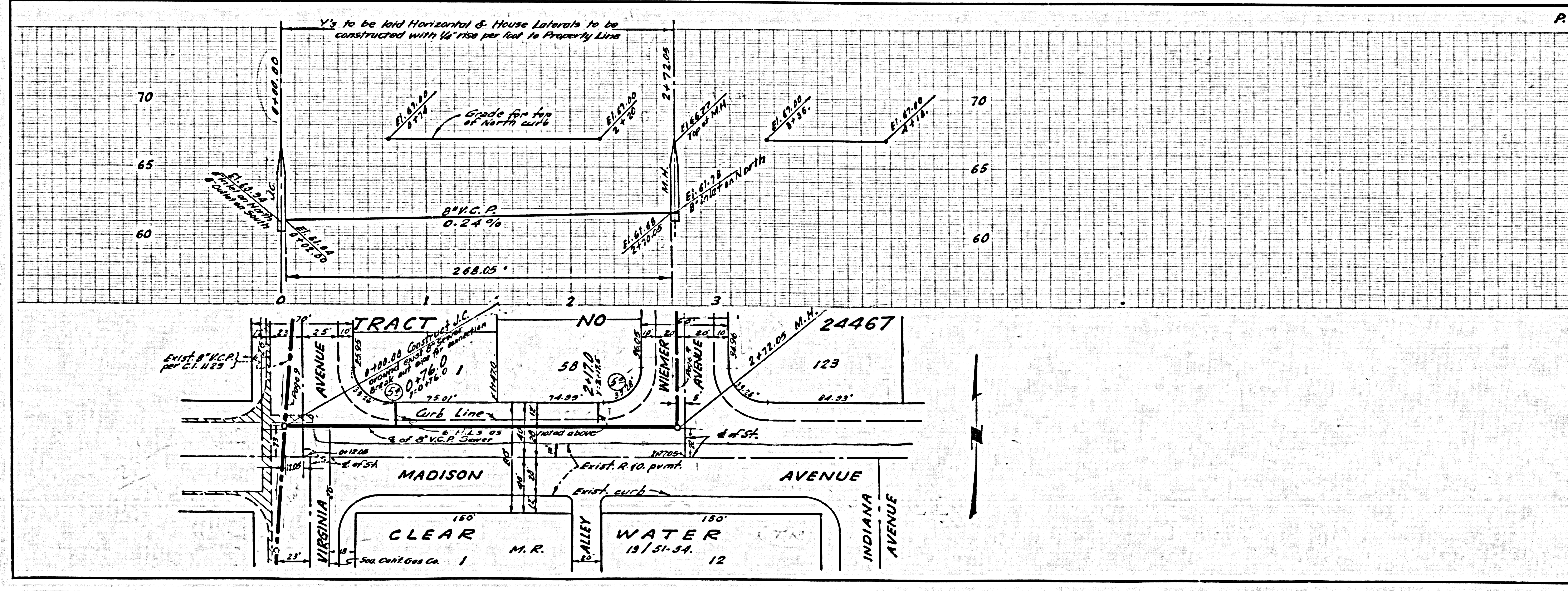
NO CHARGE FOR CONNECTIONS
E. Newell 1-21-59

J.N. 0864.09
P.C. 5009
PROFILE ALIGNMENT AND GRADE OF
SANITARY SEWERS PAGE 1
TO BE CONSTRUCTED IN
TRACT NO. 24467 (26,787)

PRIVATE CONTRACT NO. 5009
W.S. 32
6 SHEETS, 11 PAGES
SCALE: 1" = 10' HORIZ. 1" = 2' VERT.
JANUARY 1, 1959
PREPARED IN THE OFFICES OF
BARCLAY-PEARSON CO., INC.
BY: *Edward L. Pearson*
REG. C. E. NO. 5783
FOR LEGEND SEE PLAN NO. S-A-64

NOTES:
GRADES TO WHICH THE IMPROVEMENT IS TO BE CONSTRUCTED ARE SHOWN ON PLANS AND PROFILE GRADE POINTS FOR TOP OF CURB, CENTER LINE OF ALLEY, OR CENTER LINE OF ALLEY ARE SHOWN BY CIRCLES ON PROFILES AT ALL POINTS BETWEEN MANHOLE POINTS.
ELEVATIONS ARE IN FEET ABOVE U.S.C. & G.S. SEA LEVEL DATUM OF 1929.
THIS DRAWING AND THE DATA HEREON ARE HEREBY MADE A PART OF THE SPECIFICATIONS.
WORK SHALL BE CONSTRUCTED ACCORDING TO SPECIFICATIONS ON FILE IN THE OFFICE OF THE CITY ENGINEER AND SHALL BE PROSECUTED ONLY IN THE PRESENCE OF THE CITY ENGINEER.
EXCEPT WORK CAN BE STARTED, THE CONTRACTOR MUST OBTAIN A PERMIT TO EXCAVATE IN THE CITY STREET FROM THE L.A. COUNTY ROAD DEPT., DISTRICT OFFICE NO. 1, AND MAKE A DEPOSIT WITH THE CITY OF PARAMOUNT, 4002 PARAMOUNT BLVD. THE COST OF CONSTRUCTION INSPECTION AND SECOND PLANS.
APPROVAL OF THIS PLAN BY THE CITY OF PARAMOUNT DOES NOT CONSTITUTE A REPRESENTATION AS TO THE ACCURACY OF THE LOCATION OR OF THE EXISTENCE OR NON-EXISTENCE OF ANY UNDERGROUND UTILITY PIPE, OR STRUCTURE WITHIN THE LIMITS OF THIS PROJECT. THIS NOTE APPLIES TO ALL PAGES.
IF WORK IS TO BE DONE IN A STATE HIGHWAY, A PERMIT MUST BE OBTAINED FROM THE STATE OF CALIFORNIA, DIVISION OF HIGHWAYS, 120 SOUTH SPRING STREET.

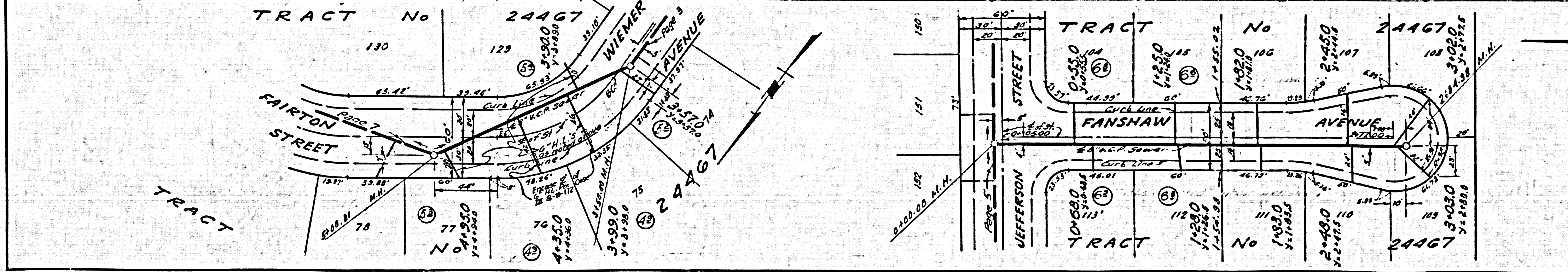
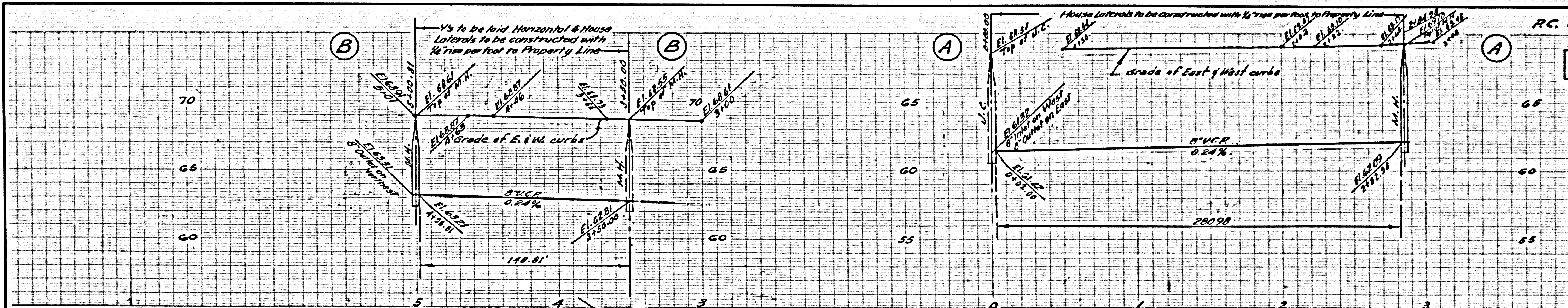
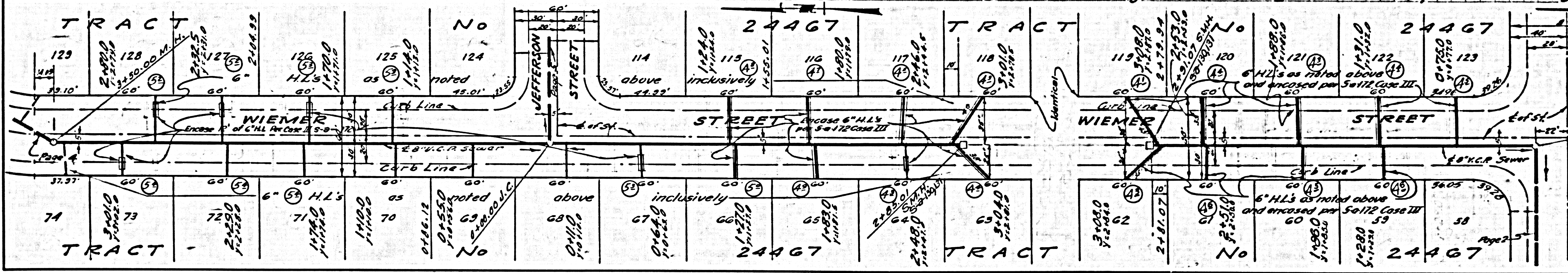
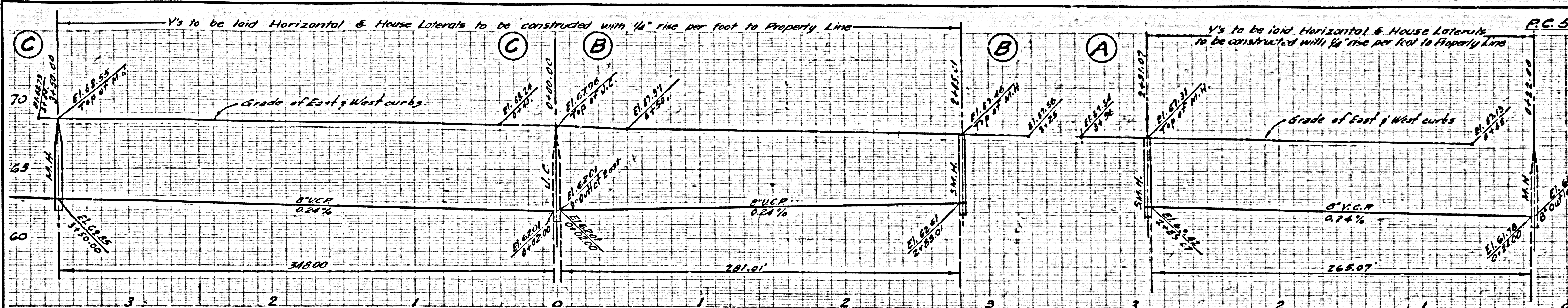
CITY OF PARAMOUNT, CALIFORNIA
APPROVED, JOHN A. LAMBE, CITY ENGINEER
APPROVED, C.E. COMPTON, CHIEF ENGINEER
BY: *E. L. Newell* SANITATION ENGINEER
BY: *P. P. Williams* CHIEF ENGINEER
CHECKED BY: *Carl Pearson* 1-21-59
OFFICE OF CITY ENGINEER, 510 E. I. NO. 10, 617
SUBMITTED BY: *John L. Carter* 1-21-59
REG. C.E. NO. 5783 REGIONAL ENGINEER, REG. NO. 3171

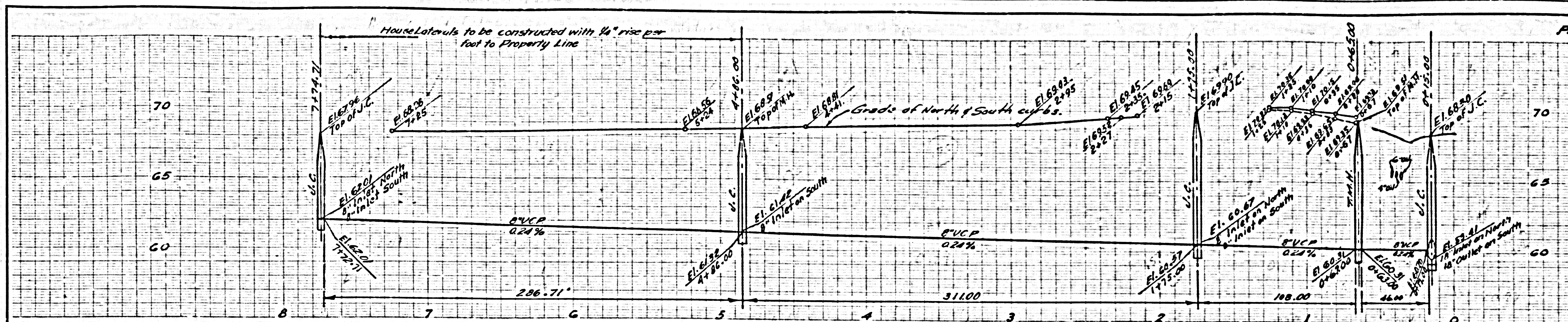


P.C. 5009 PAGE 2

NO CHARGE FOR CONNECTIONS

26,788

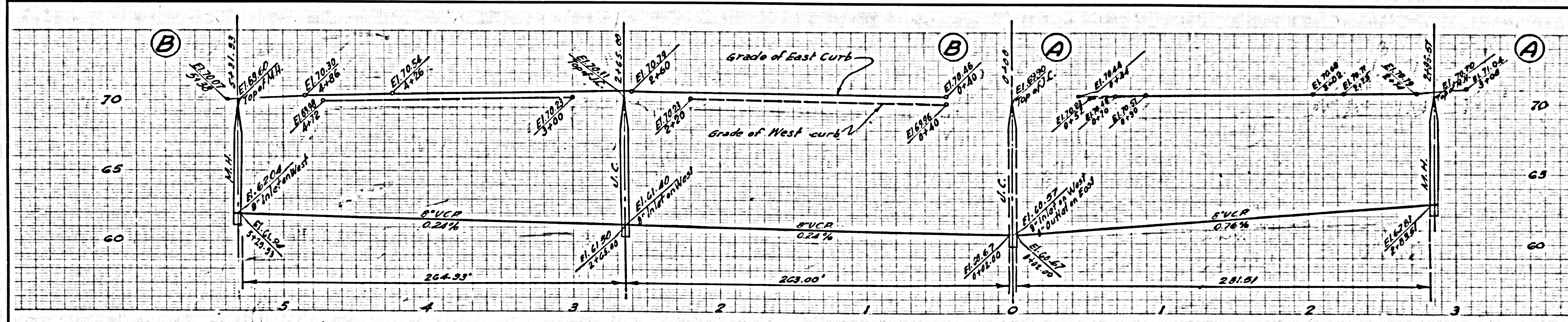
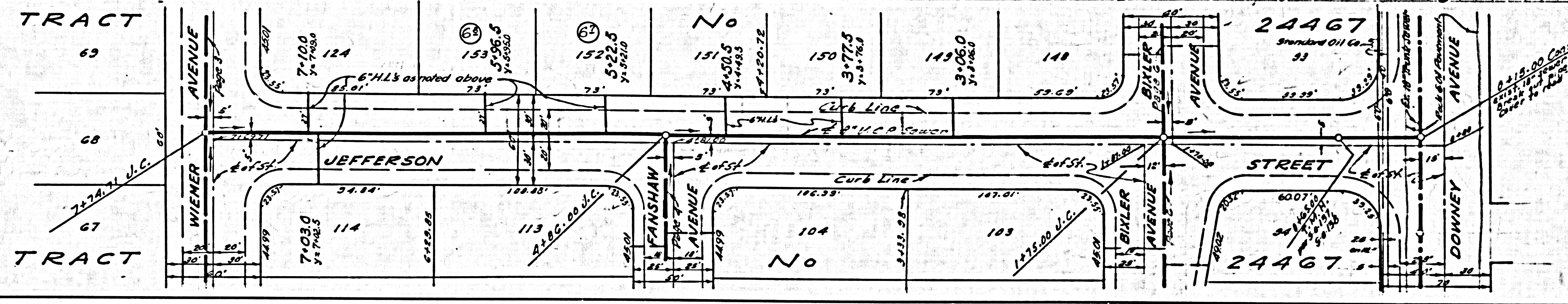




NO CHARGE FOR CONNECTIONS

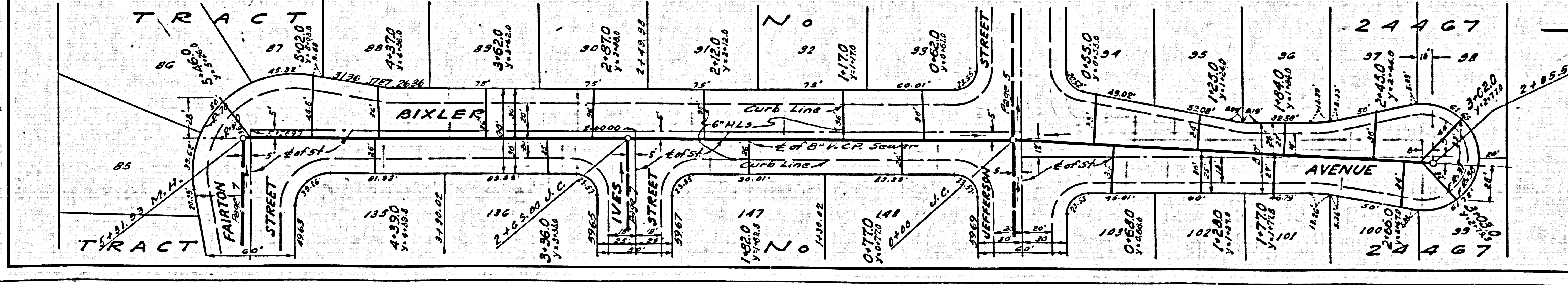
26,791

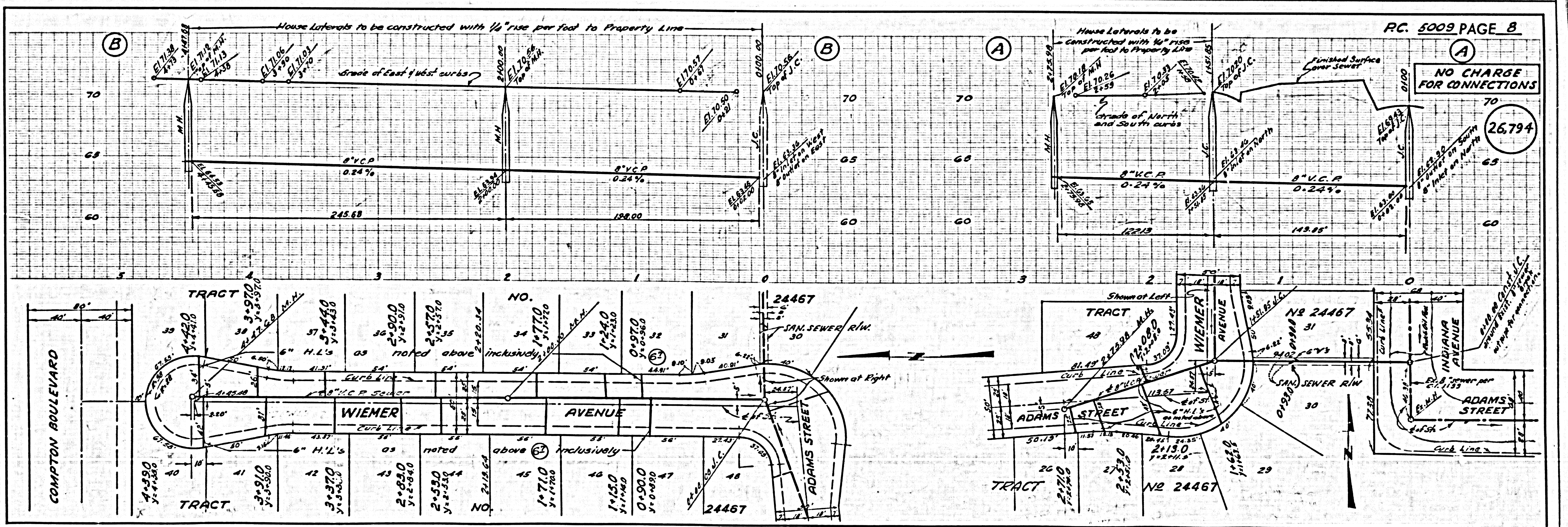
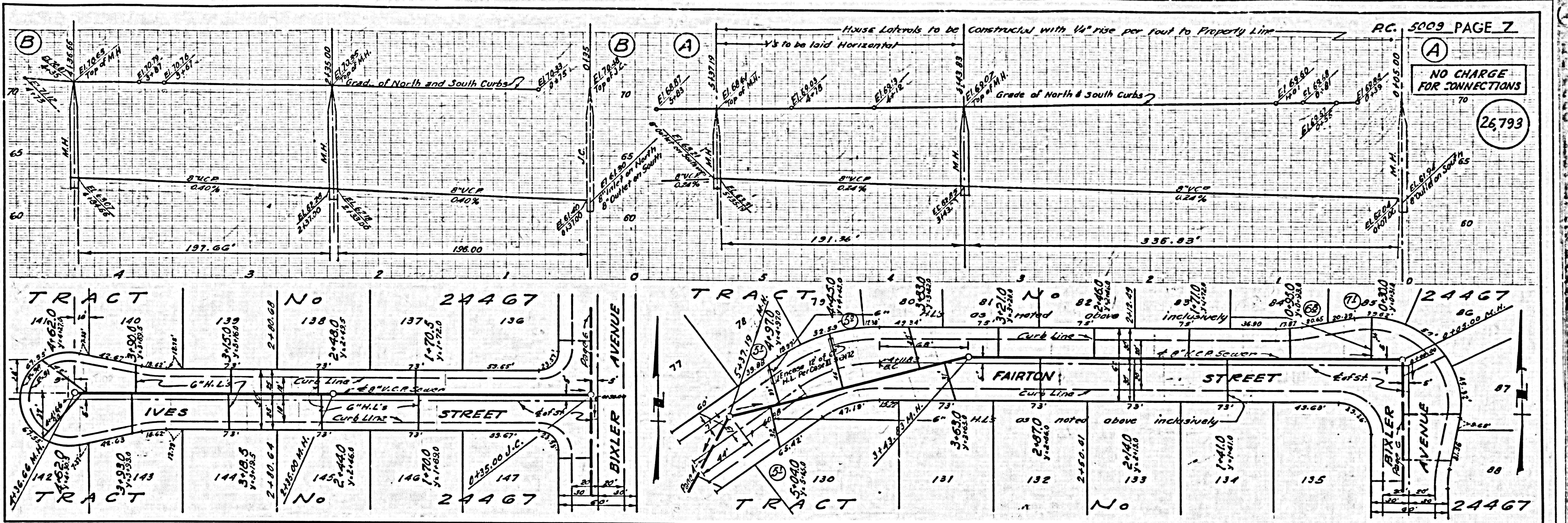
Revision: Moved T.M.H. from Sta. 460.00 to Sta. 465.00
 By *Carl W. Clemens*
 Office of County Engineer
 Proj. C.E.M. 2552



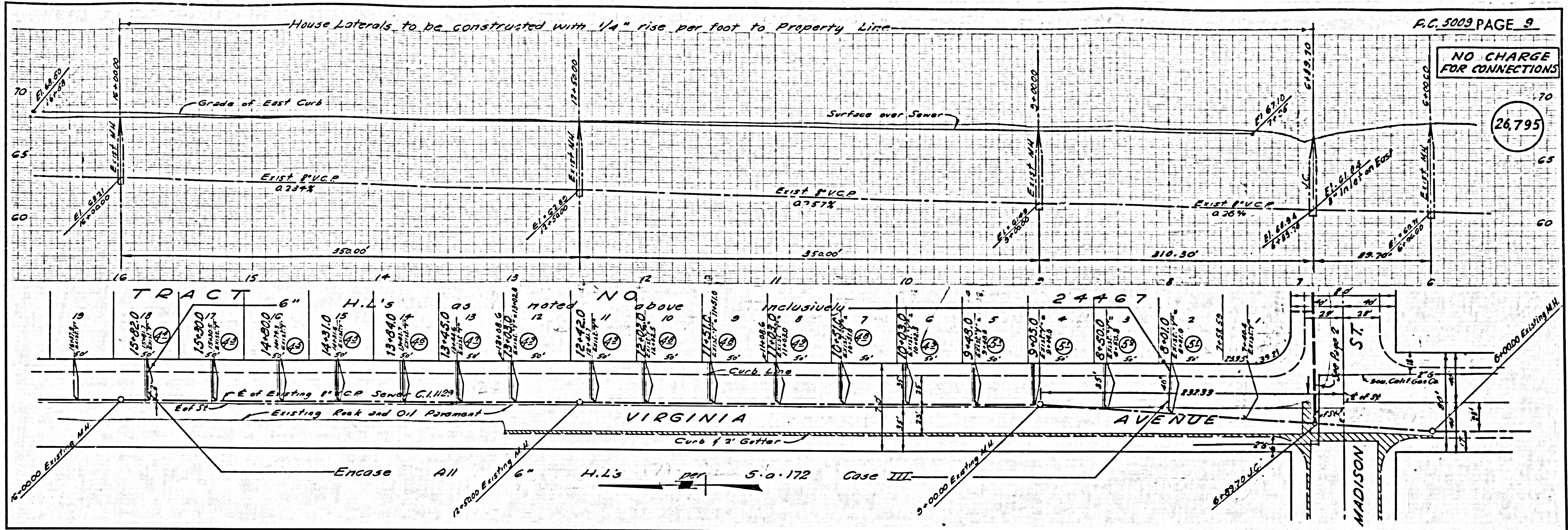
NO CHARGE FOR CONNECTIONS

26,792



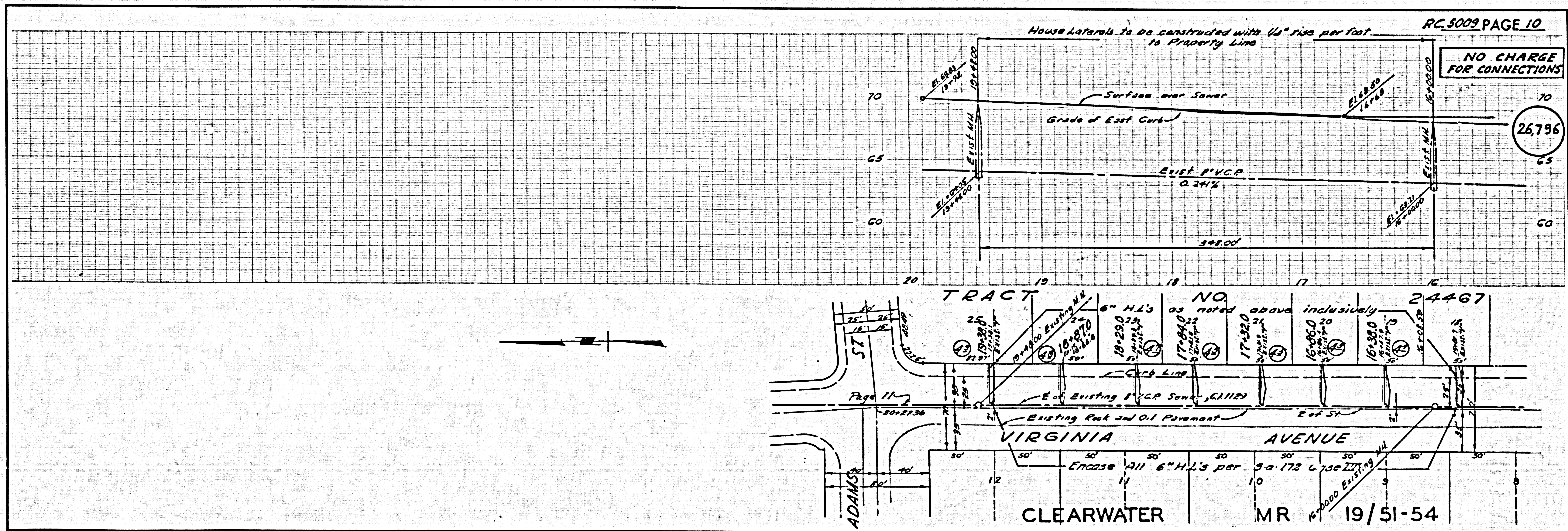


NO CHARGE FOR CONNECTIONS



26,795

NO CHARGE FOR CONNECTIONS

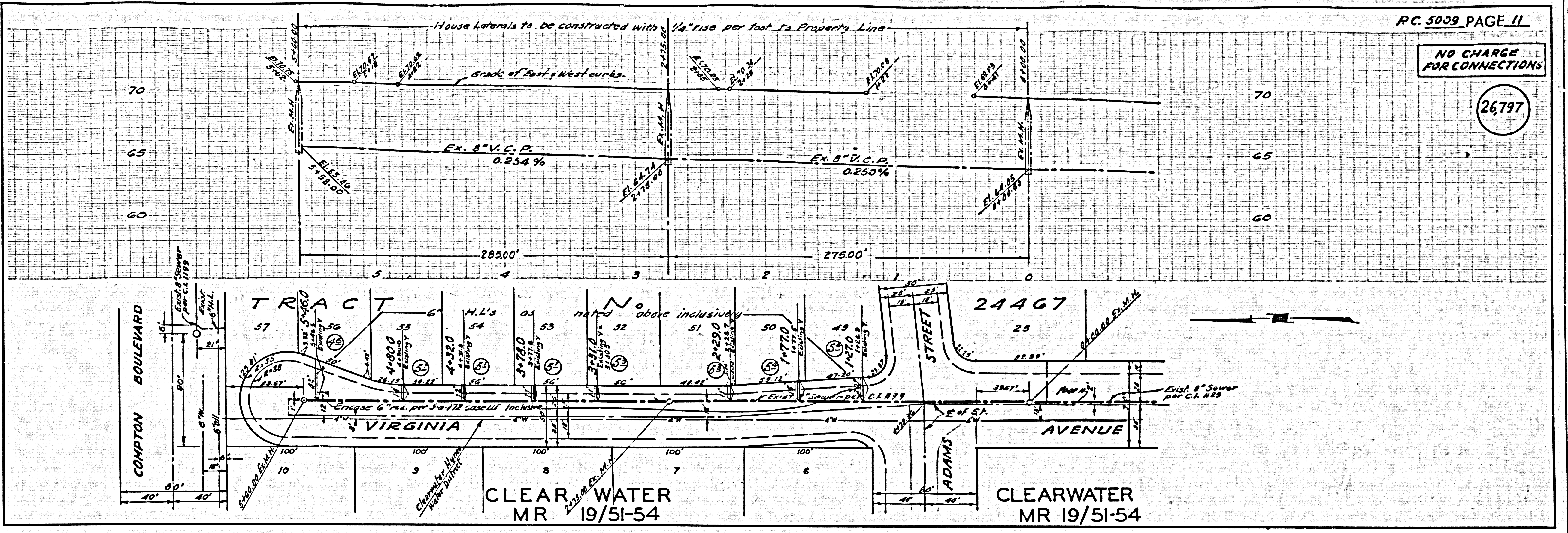


26,796

CLEARWATER MR 19/51-54

NO CHARGE FOR CONNECTIONS

26797



PAGE

PC. 5039 PAGE II