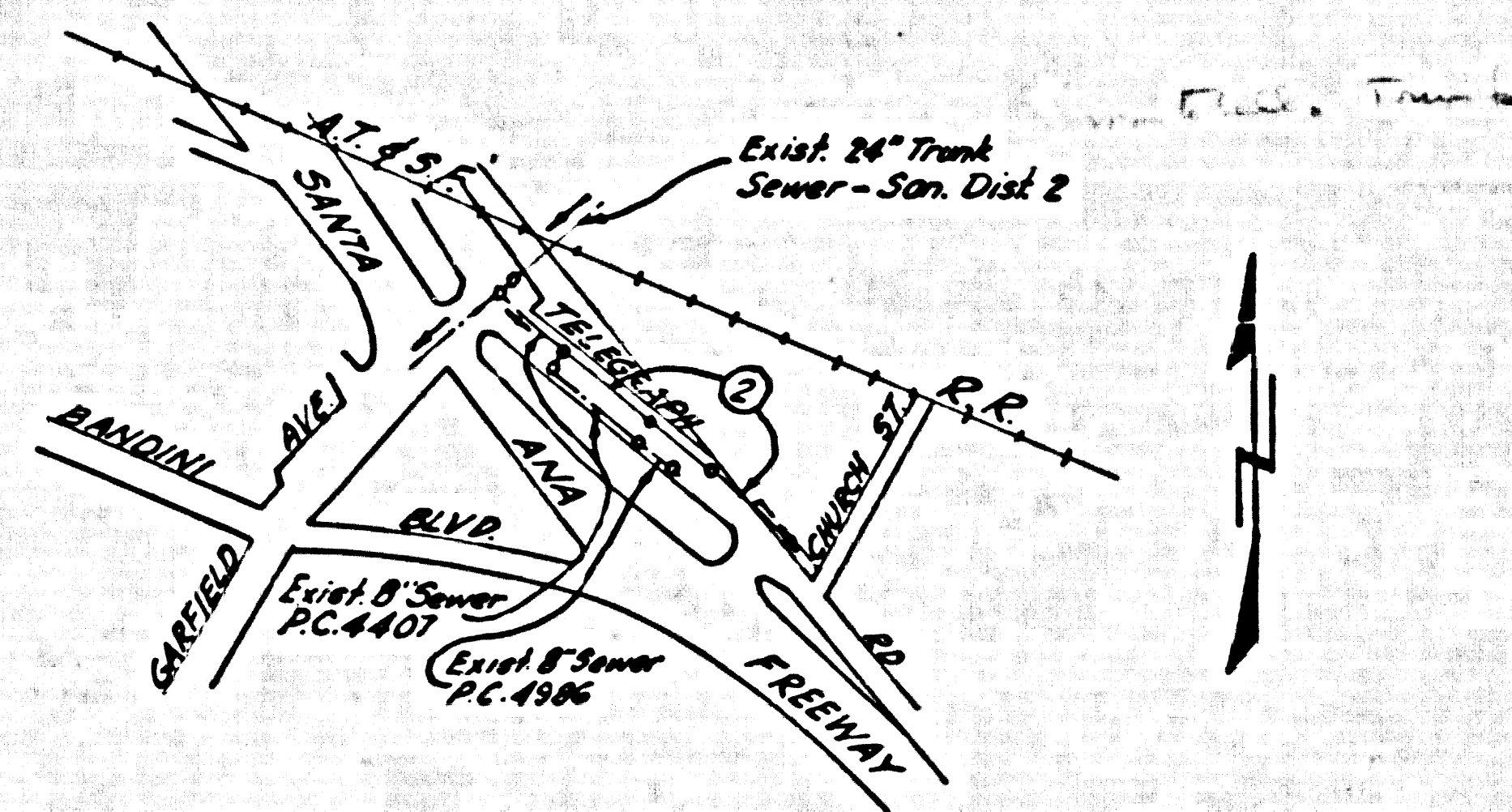


BM 5Y 1566 El. 148.687
 L & T @ W. end Ch. at N.E. Cor.
 Garfield Ave. & Slouson (1955)



INDEX MAP
 P.C. 5010
 SCALE - 1"=600'

EAST LOS ANGELES BLDG. DIST. NO. 6

- NOTES:
1. PROVIDE STAKES ON THE PROPERTY LINE OR "PROPERTY LINES PRODUCE AT RIGHT ANGLES" TO THE SEWER LINE AT THE CENTER LINE OF EACH MANHOLE.
 2. NO REPRESENTATIVE OF THE COUNTY ENGINEER WILL SURVEY OR LAY OUT ANY PORTION OF THE WORK.
 3. THE OWNER OR HIS AUTHORIZED REPRESENTATIVE SHALL FURNISH THE COUNTY ENGINEER WITH GRADE SHEETS AND STATIONING FOR ALL HOUSE LATERALS AND BRANCHES AND SHALL PROVIDE STAKES FOR THEM AT THEIR PROPER LOCATIONS WITH STATIONING PLAINLY MARKED. ANY CHANGE IN LOCATION SHALL BE REQUESTED IN WRITING BY THE OWNER OR HIS REPRESENTATIVE.
 4. THE PRIVATE ENGINEER SHALL FURNISH THE HOUSE LATERAL BATHS AT THE PROPERTY LINE BELOW THE TOP OF CURB SAVATION FOR EACH HOUSE LATERAL ON THE GRADE SHEET.
 5. NO INTERSECTIONS SHALL BE MADE BY THESE PLANS WITHOUT THE APPROVAL OF THE COUNTY ENGINEER.
 6. USE STANDARD MANHOLE FRAMES AND COVERS, 5-11/2, EXCEPT AS NOTED.
 7. USE STANDARD STRENGTH PIPE EXCEPT AS NOTED.
 8. USE STANDARD HOOKS OR "WINDROCKS" OR "SPRUE-SEAL" FOR ALL V.C.P. JOINTS PER SPEC., SECT. 26 & 42.
 9. RESURFACE ALL TRENCH WITHIN PAVED AREA TO MEET L.A. COUNTY ROAD DEPT. OR CALIF. STATE HIGHWAY REQUIREMENTS IN ACCORDANCE WITH PERMITS.
 10. ENCASE FOUR FEET OF SEWER AT POINTS OF INTERFERENCE WITH POLES, CASE III, 5-17E.
 11. HOUSE LATERALS TO BE CONSTRUCTED WITH INVERTS AT PROPERTY LINE, FEET BELOW CURB GRADE EXCEPT AS NOTED.
 12. ALL STRUCTURES SHALL BE BRICK SEWER STRUCTURES, 5-104, EXCEPT AS NOTED.
 13. FOR ALLOWABLE LEAKAGE TEST USE FORMULA NO. 1, SPEC., SEC. 54.
 14. MANHOLE TOPS IN UNIMPROVED RIGHTS-OF-WAY TO BE SIX INCHES ABOVE FINISHED GRADE.
 15. THE CONTRACTOR SHALL NOTIFY THE CONSTRUCTION & STORM DRAIN DIVISION BY TELEPHONE, MARSHEN 9-67, EXT. 341, AT LEAST TWENTY-FOUR HOURS BEFORE STARTING ANY WORK UNDER THIS CONTRACT.

NO CHARGE FOR CONNECTIONS
 77 77 c Garfield 1-9-59

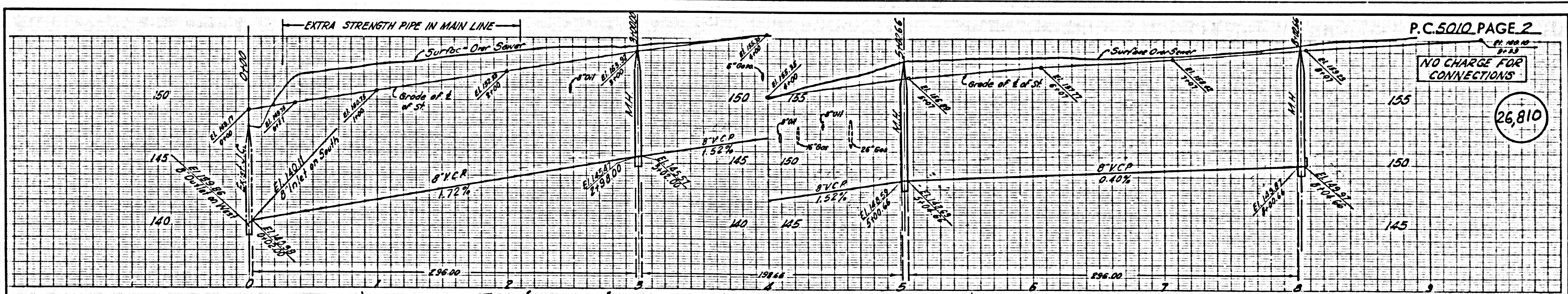
PROFILE ALIGNMENT AND GRADE OF P.C. 5010
 SANITARY SEWERS PAGE 1
 TO BE CONSTRUCTED IN TELEGRAPH ROAD (26,809)

PRIVATE CONTRACT NO. 5010
 W.S. 36
 1 SHEET; 2 PAGES
 SCALE: 1"=4' HORIZ. 1"=4' VERT. DEC. 1958
 PREPARED IN THE OFFICES OF
 OLSON SURVEYING SERVICE
 BY: *Frank A. Phillips*
 REG. C. E. NO. 2820
 FOR LEGEND SEE PLAN NO. S-A-64

NOTES:
 GRADES TO WHICH THE IMPROVEMENT IS TO BE CONSTRUCTED ARE SHOWN ON PLANS AND PROFILE. GRADE POINTS FOR TOP OF CURB, CENTER LINE OF STREET, OR CENTER LINE OF ALLEY ARE SHOWN BY CIRCLES ON PROFILES AT ALL POINTS BETWEEN SPICED POINTS. THE GRADES SHALL BE ESTABLISHED SO AS TO CONFORM TO A STRAIGHT LINE DRAWN BETWEEN SAID SPICED-POINT GRADES.
 ELEVATIONS ARE IN FEET ABOVE U.S.C. & G.S. SEA LEVEL DATUM OF 1929.
 THIS DRAWING AND THE DATA HEREON ARE HEREBY MADE A PART OF THE SPECIFICATIONS.
 WORK SHALL BE CONSTRUCTED ACCORDING TO SPECIFICATIONS ON FILE IN THE OFFICE OF THE COUNTY ENGINEER AND SHALL BE PROSECUTED ONLY IN THE PRESENCE OF THE COUNTY ENGINEER.
 BEFORE WORK CAN BE STARTED, THE CONTRACTOR MUST OBTAIN A PERMIT TO EXCAVATE IN COUNTY STREETS FROM THE L.A. COUNTY ROAD DEPT., DISTRICT OFFICE NO. 8, AND MAKE A DEPOSIT WITH THE COUNTY ENGINEER, ROOM 324 MAIN AMERICAN BUILDING, 255 1/2 BROADWAY, LOS ANGELES, TO COVER THE COST OF CONSTRUCTION INSPECTION AND RECORD PLANS.
 APPROVAL OF THIS PLAN BY THE COUNTY OF LOS ANGELES DOES NOT CONSTITUTE A REPRESENTATION AS TO THE ACCURACY OF THE LOCATION OF OR THE EXISTENCE OR NON-EXISTENCE OF ANY SUBSURFACE UTILITY PIPE, OR STRUCTURE WITHIN THE LIMITS OF THIS PROJECT. THIS NOTE APPLIES TO ALL PAGES.
 IF WORK IS TO BE DONE IN A STATE HIGHWAY, A PERMIT MUST BE OBTAINED FROM THE STATE OF CALIFORNIA, DIVISION OF HIGHWAYS, 120 SOUTH BRIDGE STREET.

COUNTY OF LOS ANGELES, CALIFORNIA

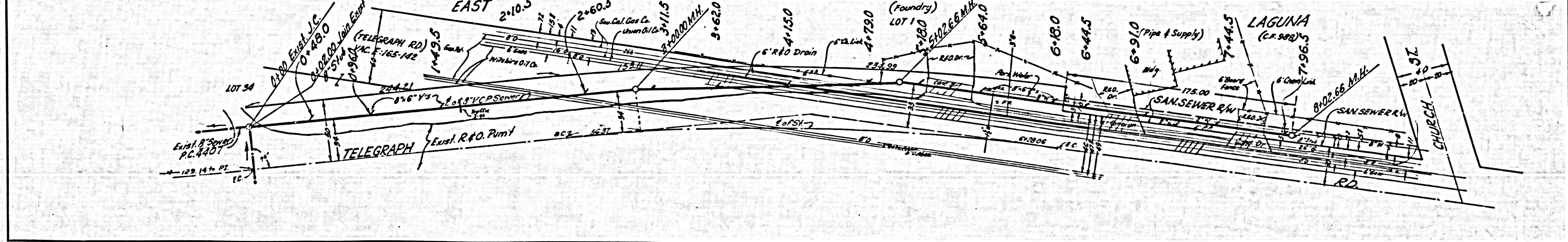
APPROVED, JOHN A. LAMME, COUNTY ENGINEER
 APPROVED, C.E. CRAFTON, CHIEF ENGINEER
 BY: *John A. Lamme* SANITATION DIVISION
 BY: *C.E. Crafton* CHIEF ENGINEER
 CHECKED BY: *James J. White* 1-16-59
 OFFICE OF COUNTY ENGINEER, ROOM C. E. NO. 3466
 SUBMITTED: *N.F. Bravender*
 SAN GABRIEL VALLEY REGIONAL ENGINEER



P.C. 5010 PAGE 2

NO CHARGE FOR CONNECTIONS

26,810



DRS. 1-5-59