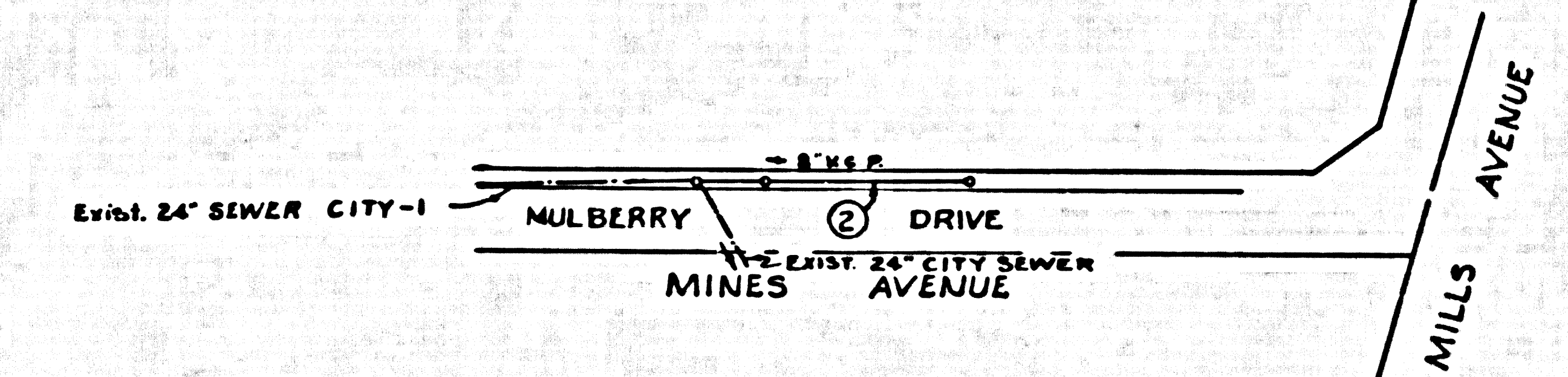


BENCH MARK SY 1290 Elev. 150.284  
 L&T. 2' E. of Curb Return S.E. Cor. Broadway  
 & Mills Ave. (Santa Fe Quad.) 1955 Adj.

NO CHARGE  
 FOR CONNECTIONS  
 E. Edwards 2-16-59

WHITTIER BLDG. DIST. NO. 11

- NOTES
1. PROPERTY STAKES ON THE PROPERTY LINE OR PROPERTY LINES PRODUCED AT RIGHT ANGLES TO THE SEWER LINE AT THE CENTER LINE OF EACH BRANCH.
  2. NO REPRESENTATIVE OF THE COUNTY ENGINEER WILL SURVEY OR LAY OUT ANY PORTION OF THE WORK.
  3. THE OWNER OR HIS AUTHORIZED REPRESENTATIVE SHALL FURNISH THE COUNTY ENGINEER WITH GRADE SHEETS AND STATIONING FOR ALL HOUSE LATERALS AND V BRANCHES AND SHALL PROVIDE STAKES FOR THEM AT THEIR PROPER LOCATIONS WITH STATIONING PLAINLY MARKED. ANY CHANGE IN LOCATION SHALL BE REQUESTED IN WRITING BY THE OWNER OR HIS REPRESENTATIVE.
  4. THE PRIVATE ENGINEER SHALL FURNISH THE HOUSE LATERAL DEPTH AT THE PROPERTY LINE BELOW THE TOP OF CURB ELEVATION FOR EACH HOUSE LATERAL ON THE GRADE SHEET.
  5. NO REVISIONS SHALL BE MADE IN THESE PLANS WITHOUT THE APPROVAL OF THE COUNTY ENGINEER.
  6. USE STANDARD MANHOLE FRAMES AND COVERS, S-117, EXCEPT AS NOTED.
  7. USE STANDARD STRENGTH PIPE EXCEPT AS NOTED.
  8. USE HEALTH BOSTON OR "WEDGE-LOCK" OR "SPUR-SEAL" FOR ALL V.C.P. JOINTS PER S.P.C.S., S.P.C.S. 36 & 40.
  9. RESURFACE ALL TRENCH WITHIN PAVED AREA TO MEET L.A. COUNTY ROAD DEPT. OR CALIF. STATE HIGHWAY REQUIREMENTS IN ACCORDANCE WITH PERMITS.
  10. INCASE FOUR FEET OF SEWER AT POINTS OF INTERFERENCE WITH POLES, CAS. IN. S-172.
  11. HOUSE LATERALS TO BE CONSTRUCTED WITH INVERTS AT PROPERTY LINE. 6" FEET BELOW CURB GRADE EXCEPT AS NOTED.
  12. ALL STRUCTURES SHALL BE BRICK SEWER STRUCTURES, S-104, EXCEPT AS NOTED.
  13. FOR ALLOWABLE LEAKAGE TEST USE FORMULA NO. 1, S.P.C.S., SEC. 34.
  14. MANHOLE TOPS IN UNIMPROVED RIGHTS-OF-WAY TO BE SIX INCHES ABOVE FINISHED GRADE.
  15. THE CONTRACTOR SHALL NOTIFY THE CONSTRUCTION & ROAD DEPT. DIVISION BY TELEPHONE, MANSION 9-874, EXT. 342, AT LEAST TWENTY-FOUR HOURS BEFORE STARTING ANY WORK UNDER THIS CONTRACT.



INDEX MAP

P.C. 5017  
 Scale 1"=100'

Before breaking into any existing structure  
 and before final acceptance of this work,  
 County Sanitation District should be notified  
 in order that required inspection may be made.

PROFILE ALIGNMENT AND GRADE OF P.C. 5017  
 SANITARY SEWERS PAGE 1  
 TO BE CONSTRUCTED IN  
 MINES AVENUE

PRIVATE CONTRACT NO. 5017

W.S. 34

1 SHEETS, 2 PAGES

SCALE: VERT. 1"=4' HORIZ. 1"=40'  
 FEBRUARY, 1959  
 PREPARED IN THE OFFICES OF

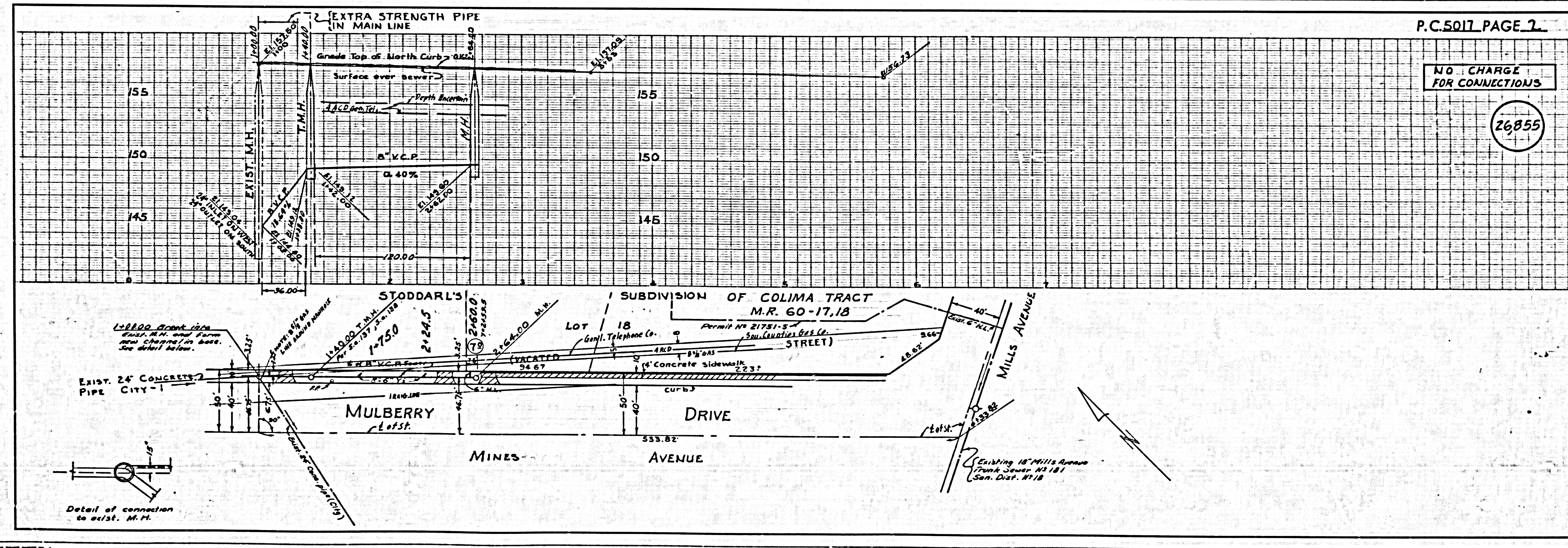
By J. L. Manning  
 (REG. C. E. NO. 7676)  
 FOR LEGEND SEE PLAN NO. S-A-64

NOTES  
 GRADES TO WHICH THIS IMPROVEMENT IS TO BE CONSTRUCTED ARE SHOWN ON PLANS AND PROFILE. GRADE POINTS FOR TOP OF CURB, CENTER LINE OF STREETS, OR CENTER LINE OF ALLEYS ARE SHOWN BY CIRCLES ON PROFILES. AT ALL POINTS BETWEEN DESIGNATED POINTS THE GRADE SHALL BE ESTABLISHED SO AS TO CONFORM TO A STRAIGHT LINE DRAWN BETWEEN SAID DESIGNATED POINTS.  
 ELEVATIONS ARE IN FEET ABOVE U.S.C. & G.S. SEA LEVEL DATUM OF 1929.  
 THIS DRAWING AND THE DATA HEREON ARE HEREBY MADE A PART OF THE SPECIFICATIONS.  
 BEFORE WORK CAN BE STARTED, THE CONTRACTOR MUST OBTAIN A PERMIT TO EXCAVATE IN COUNTY STREETS FROM THE L.A. COUNTY ROAD DEPT., DISTRICT OFFICE NO. 4, AND MAKE A DEPOSIT WITH THE COUNTY ENGINEER, ROOM 324 PAN AMERICAN BUILDING, 315 SO. HOUSTON ST. SUFFICIENT TO COVER THE COST OF CONSTRUCTION INSPECTION AND RECORD PLANS.  
 APPROVAL OF THIS PLAN BY THE COUNTY OF LOS ANGELES DOES NOT CONSTITUTE A REPRESENTATION AS TO THE ACCURACY OF THE LOCATION OF OR THE ASSISTANCE OR NON-EXISTENCE OF ANY UNDERGROUND UTILITY PIPE, OR STRUCTURE WITHIN THE LIMITS OF THIS PROJECT. THIS NOTE APPLIES TO ALL PAGES.  
 IF WORK IS TO BE DONE IN A STATE HIGHWAY, A PERMIT MUST BE OBTAINED FROM THE STATE OF CALIFORNIA, DIVISION OF HIGHWAYS, 120 SOUTH SPRING STREET.

COUNTY OF LOS ANGELES, CALIFORNIA

APPROVED, JOHN A. LAMBE, COUNTY ENGINEER APPROVED, E. R. COMPTON, CHIEF ENGINEER  
 CO. SEAL NO. 118  
 BY E. J. Hughes BY E. R. Compton  
 SANITATION DISTRICT ENGINEER OFFICE ENGINEER  
 CHECKED BY Sk. White 2-11-59  
 OFFICE OF COUNTY ENGINEER, S.B.C. NO. 3426

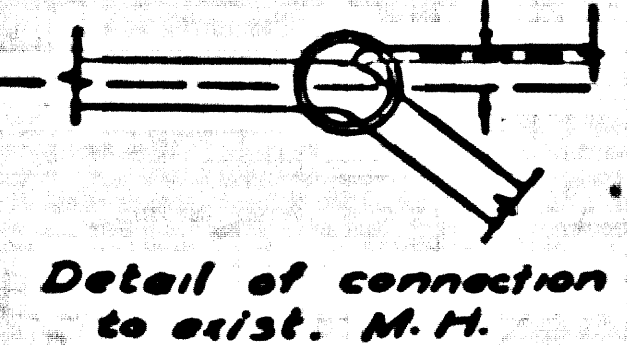
SUBMITTED BY: John L. P. Taylor 2-16-59  
 LOS CERRITOS REGIONAL ENGINEER P.C. NO. 5017



P.C. 5017 PAGE 2

NO CHARGE  
 FOR CONNECTIONS

26855



Detail of connection to exist. M.H.