

BENCH MARK:
 F.O. 1534 E.M. 239.988 1955
 1/4" 1/4" in Conc. Curb 1/4" E. of S.C.R. N.E. Cor. of RUSH ST.
 1/4" POTRERO AVE. 45' E. of E. of POTRERO AVE. 30' N. of
 E. of RUSH ST. Whittier Quad.

TEMPLE CITY BLDG. DIST. NO. 5.04

- NOTES:**
1. PROVIDE STAKES ON THE PROPERTY LINE OR PROPERTY LINES PRODUCED AT RIGHT ANGLES TO THE SEWER LINE AT THE CENTER LINE OF EACH MANHOLE.
 2. NO REPRESENTATIVE OF THE COUNTY ENGINEER WILL SURVEY OR LAY OUT ANY PORTION OF THE WORK.
 3. THE OWNER OR HIS AUTHORIZED REPRESENTATIVE SHALL FURNISH THE CITY ENGINEER WITH GRADE SHEETS AND STATIONING FOR ALL HOUSE LATERALS AND Y BRANCHES AND SHALL PROVIDE STAKES FOR THEM AT THEIR PROPER LOCATIONS WITH STATIONING PLAINLY MARKED. ANY CHANGE IN LOCATION SHALL BE REQUESTED IN WRITING BY THE OWNER OR HIS REPRESENTATIVE.
 4. THE PRIVATE ENGINEER SHALL FURNISH THE HOUSE LATERAL DEPTH AT THE PROPERTY LINE BELOW THE TOP OF CURB ELEVATION FOR EACH HOUSE LATERAL ON THE GRADE SHEET.
 5. NO REVISIONS SHALL BE MADE IN THESE PLANS WITHOUT THE APPROVAL OF THE CITY ENGINEER.
 6. USE STANDARD MANHOLE FRAMES AND COVERS, 6-1/2, EXCEPT AS NOTED.
 7. USE STANDARD STRENGTH PIPE EXCEPT AS NOTED.
 8. USE CEMENT MORTAR OR "WEDGE-LOCK" OR "SEAL" FOR ALL V.C.P. JOINTS PER SPECS., SECS. 26 & 41.
 9. RESURFACE ALL TRENCH WITHIN PAVED AREA TO MEET L.A. COUNTY ROAD DEPT. OR CALIF. STATE HIGHWAY REQUIREMENTS IN ACCORDANCE WITH PERMITS.
 10. SHALL BE FOUR FEET OF SEWER AT POINTS OF INTERFERENCE WITH POLES, CASE NO. 5-172.
 11. HOUSE LATERALS TO BE CONSTRUCTED WITH INVERTS AT PROPERTY LINE FEET BELOW CURB GRADE EXCEPT AS NOTED.
 12. ALL STRUCTURES SHALL BE BRICK SEWER STRUCTURES, 6-1/2, EXCEPT AS NOTED.
 13. FOR ALLOWABLE LEAKAGE TEST USE FORMULA NO. 2, SPECS., SEC. 41.
 14. MANHOLE TOPS IN UNIMPROVED PORTIONS OF WAY TO BE SIX INCHES ABOVE FINISHED GRADE.
 15. THE CONTRACTOR SHALL NOTIFY THE CONSTRUCTION & STORM DRAIN DIVISION BY TELEPHONE, MARSHON 9-24, EXT. 348, AT LEAST TWENTY-FOUR HOURS BEFORE STARTING ANY WORK UNDER THIS CONTRACT.

NO CHARGE FOR CONNECTIONS
 7/27/59 Revised 8-25-59

TO BE CONSTRUCTED IN
SANITARY SEWER RIGHT OF WAY

PRIVATE CONTRACT NO. 5018

W.S. 37

1 SHEET, 2 PAGES

26,848

SCALE: VERT. 1"=4' HORIZ. 1"=40' JANUARY, 1959

PREPARED IN THE OFFICES OF
ADAMS AND ELLS - CIVIL ENGINEERS

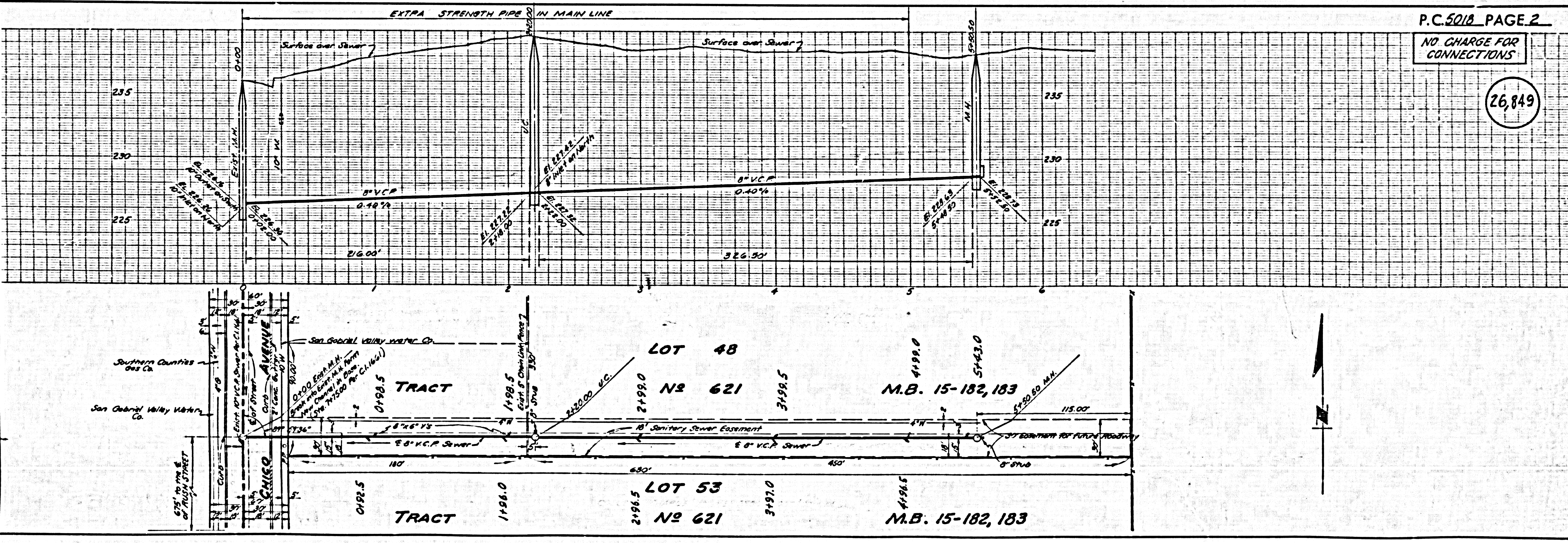
BY William D. Adams REG. C.E. NO. 10280
 FOR LEGEND SEE PLAN NO. S-A-64

NOTES:
 GRADES TO WHICH THE IMPROVEMENT IS TO BE CONSTRUCTED ARE SHOWN ON PLANS AND PROFILES. GRADE POINTS FOR TOP OF CURBS, CENTER LINE OF STREETS, OR CENTER LINE OF ALLEYS ARE SHOWN BY CIRCLES OR SQUARES. AT ALL POINTS BETWEEN DESIGNATED POINTS THE GRADE SHALL BE ESTABLISHED SO AS TO CONFORM TO A STRAIGHT LINE DRAWN BETWEEN SAID DESIGNATED POINTS.
 ELEVATIONS ARE IN FEET ABOVE U.S.C. & G.S. SEA LEVEL DATUM OF 1929.
 THIS DRAWING AND THE DATA HEREON ARE HEREBY MADE A PART OF THE SPECIFICATIONS.
 BEFORE WORK CAN BE STARTED, THE CONTRACTOR MUST OBTAIN A PERMIT TO EXCAVATE IN CITY STREETS FROM THE L.A. COUNTY ROAD DEPT., DISTRICT OFFICE NO. 1, AND MAKE A DEPOSIT WITH THE CITY ENGINEER, ROOM 524 SAN ANTONIO BUILDING, \$100.00 BONDARY SUFFICIENT TO COVER THE COST OF CONSTRUCTION INSPECTION AND RECORD PLANS.
 APPROVAL OF THIS PLAN BY THE CITY OF SOUTH EL MONTE DOES NOT CONSTITUTE A REPRESENTATION AS TO THE ACCURACY OF THE LOCATION OF OR THE EXISTENCE OR NON-EXISTENCE OF ANY UNDERGROUND UTILITY PIPE, OR STRUCTURE WITHIN THE LIMITS OF THE PROJECT. THIS NOTE APPLIES TO ALL PAGES.
 IF WORK IS TO BE DONE BY A STATE HIGHWAY, A PERMIT MUST BE OBTAINED FROM THE STATE OF CALIFORNIA, DIVISION OF HIGHWAYS, 120 SOUTH SPRING STREET.

CITY OF SOUTH EL MONTE, CALIFORNIA

APPROVED, JOHN A. LAMME, CITY ENGINEER
 APPROVED, C.F. CAMPBELL, CHIEF ENGINEER
 BY W. H. Hughes CHIEF ENGINEER
 CHECKED BY W. C. White 2-26-59
 OFFICE OF CITY ENGINEER, ROOM 524 SAN ANTONIO BUILDING

SUBMITTED: N. F. Brannan
 SAN GABRIEL VALLEY REGIONAL ENGINEER



NO CHARGE FOR CONNECTIONS

26,849

P.C. 5018