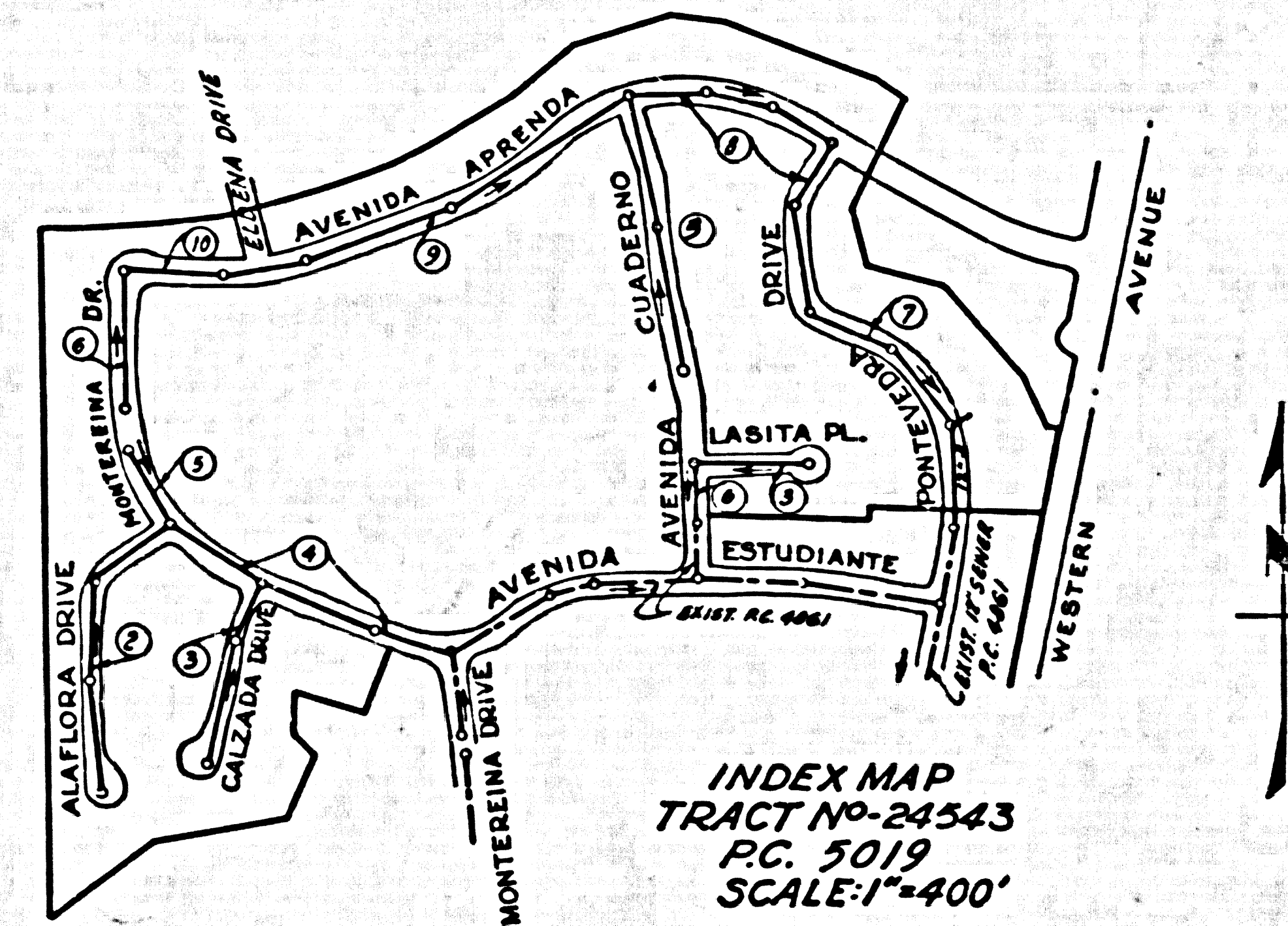


BM 35-4 C.S.B.M. 58 F.B. 1356 N. 0.8 mi S. South Palos Verdes Drive North. Large boat spike in lead in top most W. corner of concrete N.W. @ N.W. end of 72' C.P. Culvert Elevation 138.976

NO CHARGE FOR CONNECTIONS
d. Carter 2-5-59



LOMITA BLDG. DIST. NO. 71

- NOTES
1. PROFILE STAKES ON THE PROPERTY LINE OR PROPERTY LINES PRODUED AT RIGHT ANGLES TO THE SEWER LINE AT THE CENTER LINE OF EACH MANHOLE.
 2. NO REPRESENTATIVE OF THE COUNTY ENGINEER WILL SURVEY OR LAY OUT ANY PORTION OF THE WORK.
 3. THE OWNER OR HIS AUTHORIZED REPRESENTATIVE SHALL FURNISH THE COUNTY ENGINEER WITH GRAB SHEETS AND STATIONING FOR ALL HOUSE LATERALS AND BRANCHES AND SHALL PROVIDE STAKES FOR THEM AS THEY LOCATE LOCATIONS WITH STATIONING PLAINLY MARKED. ANY CHANGE IN LOCATION SHALL BE REQUESTED BY THE OWNER OR HIS REPRESENTATIVE.
 4. THE PRIVATE ENGINEER SHALL FURNISH THE HOUSE LATERAL DEPTHS AT THE PROPERTY LINE BELOW THE TOP 1/4 CURB ELEVATION FOR EACH HOUSE LATERAL ON THE GRADE SHEET.
 5. NO REVISIONS SHALL BE MADE IN THESE PLANS WITHOUT THE APPROVAL OF THE COUNTY ENGINEER.
 6. USE STANDARD MANHOLE FRAMES AND COVERS, S-117, EXCEPT AS NOTED.
 7. USE STANDARD STRENGTH PIPE EXCEPT AS NOTED.
 8. USE CEMENT MORTAR OR "WEDGE LOCK" OR "SPREAD SEAL" FOR ALL V.C.P. JOINTS PER S.P.C.S., S.P.L. 36 & 38.
 9. RESURFACE ALL TRENCH WITHIN PAVED AREA TO MEET L.A. COUNTY ROAD DEPT. OR CALIF. STATE HIGHWAY REQUIREMENTS IN ACCORDANCE WITH PERMITS.
 10. ENCASE FOUR FEET OF SEWER AT POINTS OF INTERFERENCE WITH POLES, CARS, ETC., S-172.
 11. HOUSE LATERALS TO BE CONSTRUCTED WITH INVERTS AT PROPERTY LINE $\frac{1}{2}$ FOOT BELOW CURB GRADE EXCEPT AS NOTED.
 12. ALL STRUCTURES SHALL BE BRICK SEWER STRUCTURES, S-104, EXCEPT AS NOTED.
 13. FOR ALLOWABLE LEAKAGE TEST USE FORMULA NO. 1, S.P.C.S., SEC. 34.
 14. MANHOLE TOPS IN UNIMPROVED RIGHTS-OF-WAY TO BE SIX INCHES ABOVE FINISHED GRADE.
 15. THE CONTRACTOR SHALL NOTIFY THE CONSTRUCTION & STORM DRAIN DIVISION BY TELEPHONE, MADISON 5-670, EXT. 362, AT LEAST TWENTY-FOUR HOURS BEFORE STARTING ANY WORK UNDER THIS CONTRACT.
 16. NO CONSTRUCTION SHALL BE PERMITTED IN FILLED AREAS UNLESS ACCORDABLE CERTIFICATION IS SUBMITTED TO THE CONSTRUCTION DIVISION OF THE COUNTY ENGINEER'S DEPARTMENT THAT ELEVATION COMPLETION IS GREATER THAN 80%.
 17. IF COMPLETION IS LESS THAN 80%, THE SEWER MUST BE CRADLED AS SHOWN ON THE PLANS PER S-172.
 18. IF COMPLETION IS GREATER THAN 80%, CEMENTING AND SPECIAL M.M. PASSES ARE NOT REQUIRED. HOWEVER, JOINT COMPOUND MUST BE SUBSTITUTED FOR CEMENT MORTAR FOR ALL JOINTS IN FILLED AREAS.
 19. ALL M.L.'S OR MAIN LINE SEWERS CROSSING STORM DRAIN NOT OTHERWISE CRADLED, SHALL BE CRADLED PER S-172, CASE III.

PROFILE ALIGNMENT AND GRADE OF P.C. 5019
SANITARY SEWERS PAGE 1
TO BE CONSTRUCTED IN J.N. 0350.00

TRACT No. 24543
PRIVATE CONTRACT NO. 5019

W.S. 28
5 SHEETS, 10 PAGES

SCALE: VERT. 1"=5' HORIZ. 1"=40'

DECEMBER, 1958
PREPARED IN THE OFFICES OF
DEVELOPMENT CONSULTANTS INC.
490 E. WALLNUT ST. PASADENA, CAL.

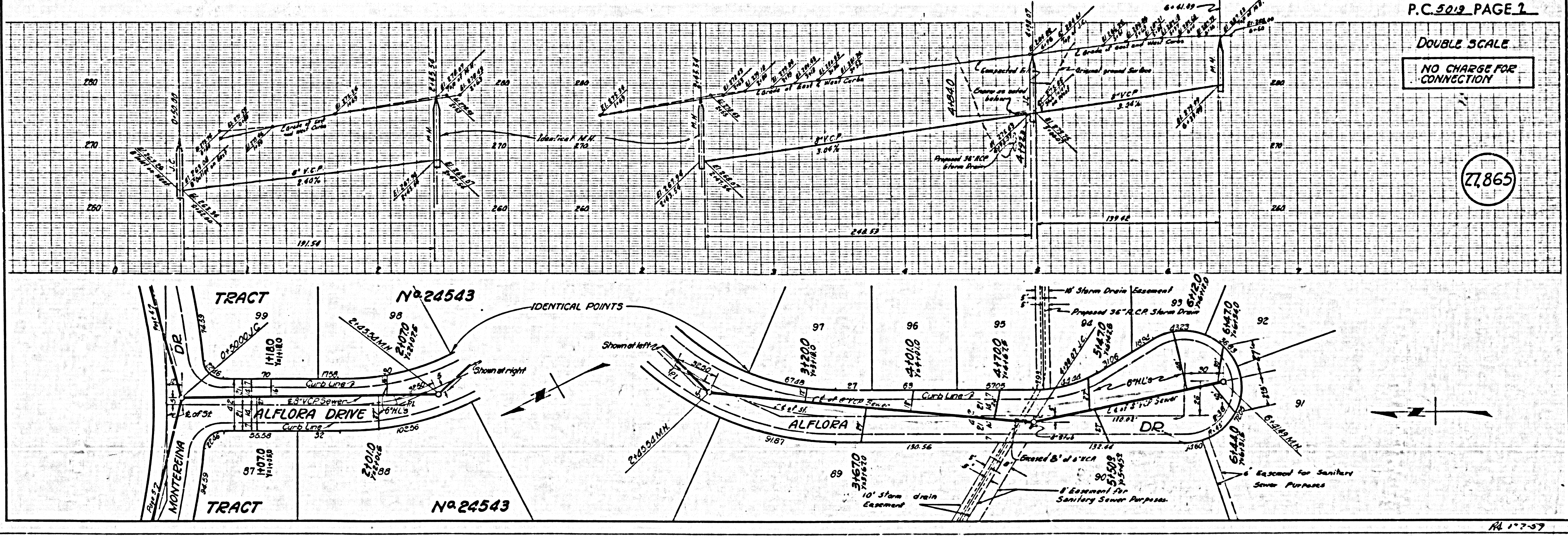
27,864

FOR LEGEND SEE PLAN NO. S-A-64

NOTES
GRADES TO WHICH THIS IMPROVEMENT IS TO BE CONSTRUCTED ARE SHOWN ON PLANS AND PROFILES. GRADE POINTS FOR TOP OF CURB, CENTER LINE OF STREETS, OR CENTER LINE OF ALLEYS ARE SHOWN BY CIRCLES ON PROFILES. AT ALL POINTS BETWEEN DESIGNATED POINTS THE GRADE SHALL BE REINTERPOLATED SO AS TO CONFORM TO A SMOOTH AND BEATWAVE BETWEEN SAID DESIGNATED POINTS.
ELEVATIONS ARE IN FEET ABOVE U.S.C. & G.S. SEA LEVEL DATUM OF 1929.
THIS DRAWING AND THE DATA HEREON ARE HEREBY MADE A PART OF THE SPECIFICATIONS.
WORK SHALL BE CONSTRUCTED ACCORDING TO SPECIFICATIONS ON FILE IN THE OFFICE OF THE COUNTY ENGINEER AND SHALL BE PROSECUTED ONLY IN THE PRESENCE OF THE COUNTY ENGINEER.
BEFORE WORK CAN BE STARTED, THE CONTRACTOR MUST OBTAIN A PERMIT TO EXCAVATE IN COUNTY STREETS FROM THE L.A. COUNTY ROAD DEPT., DISTRICT OFFICE NO. 8, AND MAKE A REPORT WITH THE COUNTY ENGINEER, ROOM 334 FARM ANGLE, BARRING, 213 50 BROADWAY SUFFICIENT TO COVER THE COST OF CONSTRUCTION INSPECTION AND RECORD PLANS.
APPROVAL OF THIS PLAN BY THE COUNTY OF LOS ANGELES DOES NOT CONSTITUTE A REPRESENTATION AS TO THE ACCURACY OF THE LOCATION OF OR THE EXISTENCE OR NON-EXISTENCE OF ANY UNDERGROUND UTILITY PIPE, OR STRUCTURE WITHIN THE LIMITS OF THIS PROJECT. THE NOTE APPLIES TO ALL PAGES.
IF WORK IS TO BE DONE IN A STATE HIGHWAY, A PERMIT MUST BE OBTAINED FROM THE STATE OF CALIFORNIA, DIVISION OF HIGHWAYS, 126 SOUTH SPRING STREET.

COUNTY OF LOS ANGELES, CALIFORNIA

APPROVED, JOHN A. LAMBE, COUNTY ENGINEER
APPROVED, C.R. CANTON, CHIEF ENGINEER
BY *[Signature]* BY *[Signature]*
SANITATION ENGINEER OFFICE ENGINEER
CHECKED BY *[Signature]*
OFFICE OF COUNTY ENGINEER, B.S. C. E. NO. 3406



P.C. 5019 PAGE 1

DOUBLE SCALE

NO CHARGE FOR CONNECTION

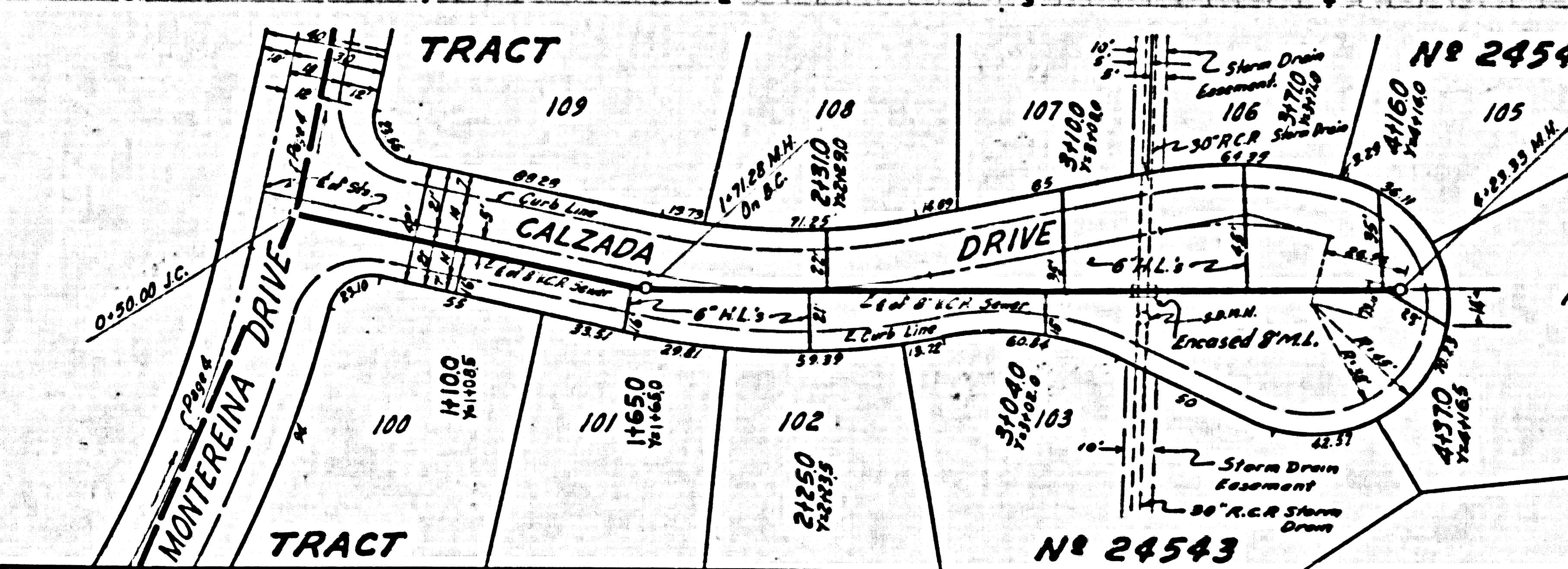
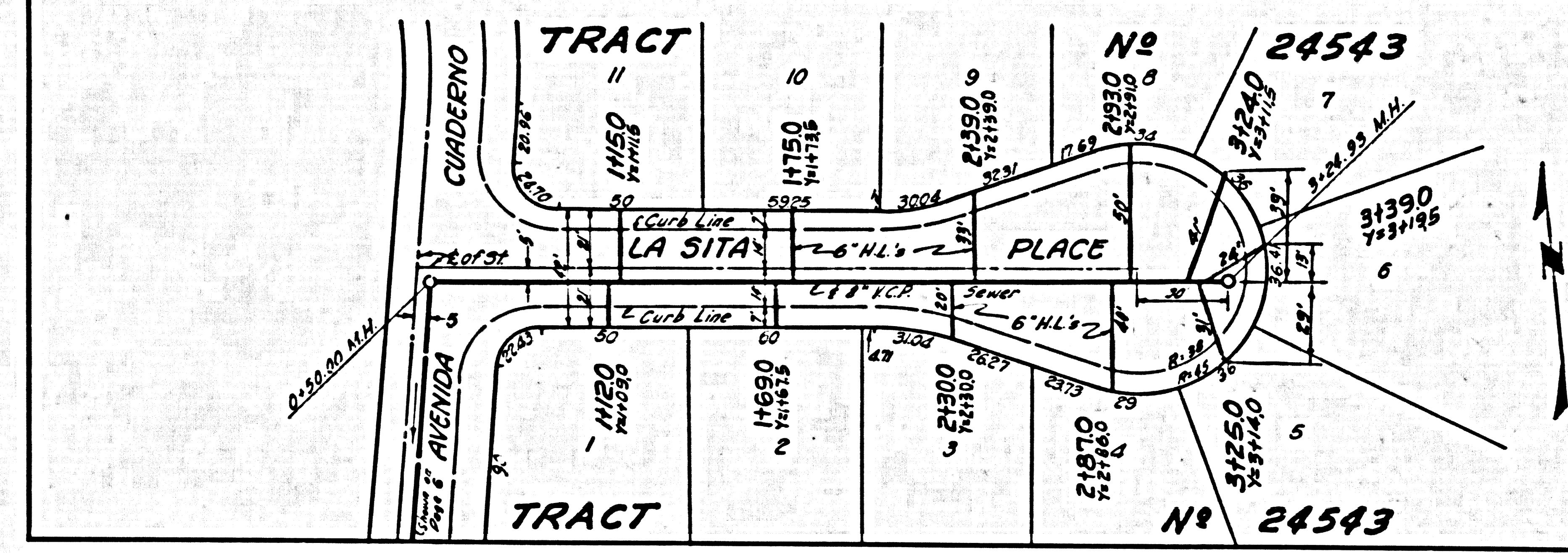
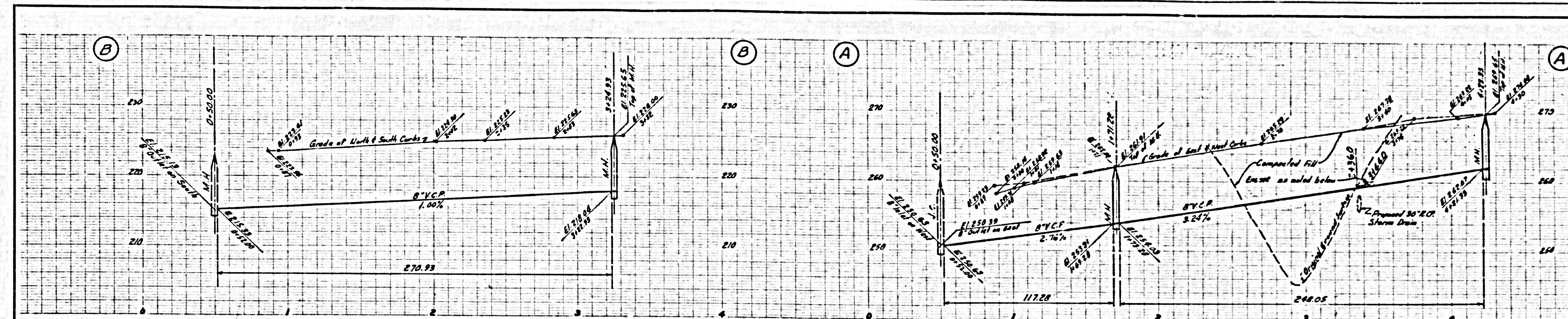
27,865

PL 17-59

DOUBLE SCALE

NO CHARGE FOR CONNECTIONS

27,866

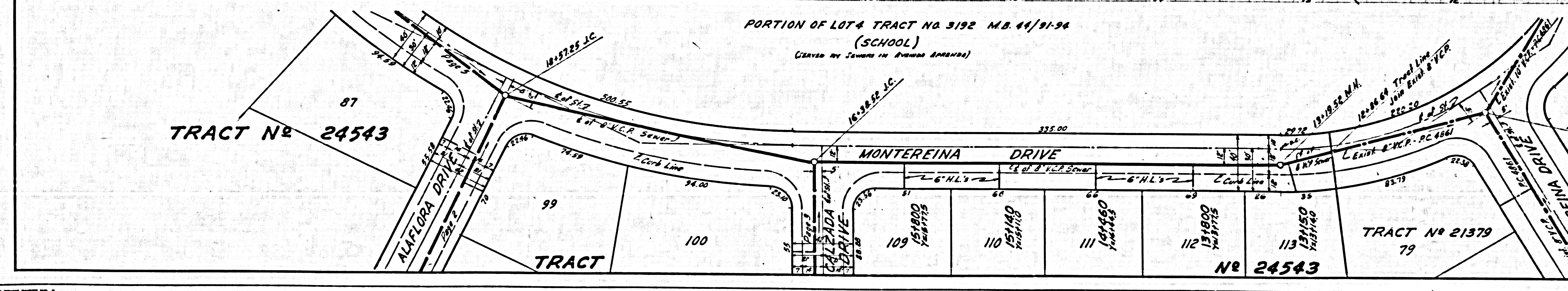
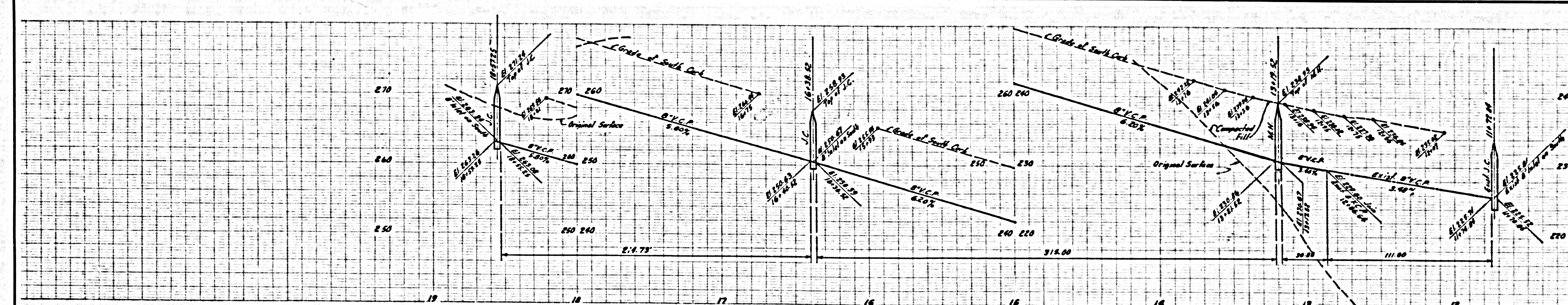


RS 1-7-57

DOUBLE SCALE

NO CHARGE FOR CONNECTIONS

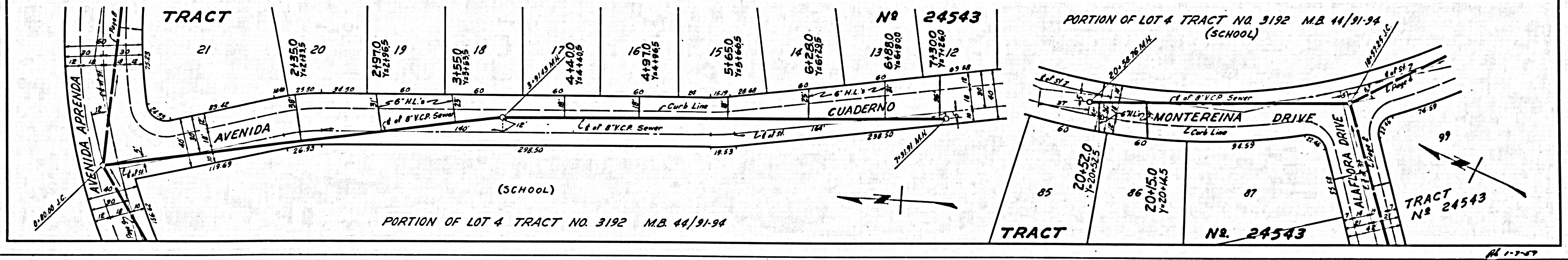
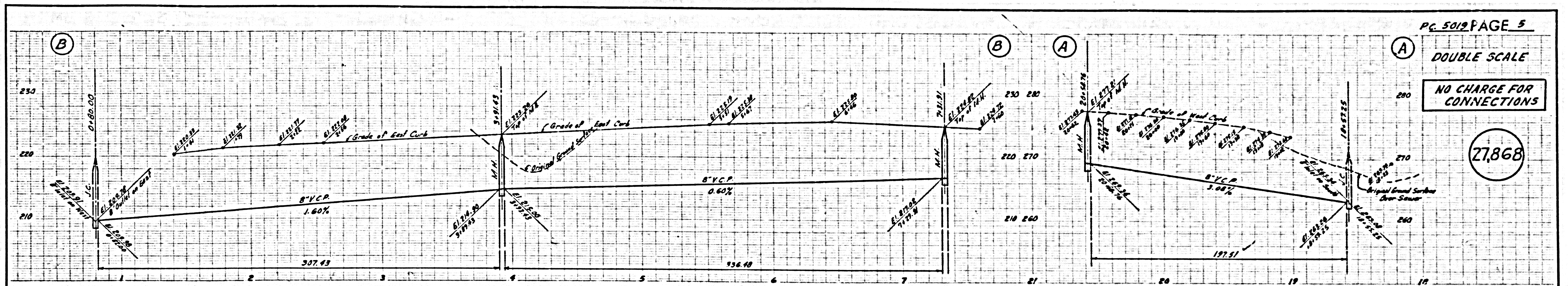
27,867



RS 1-7-57

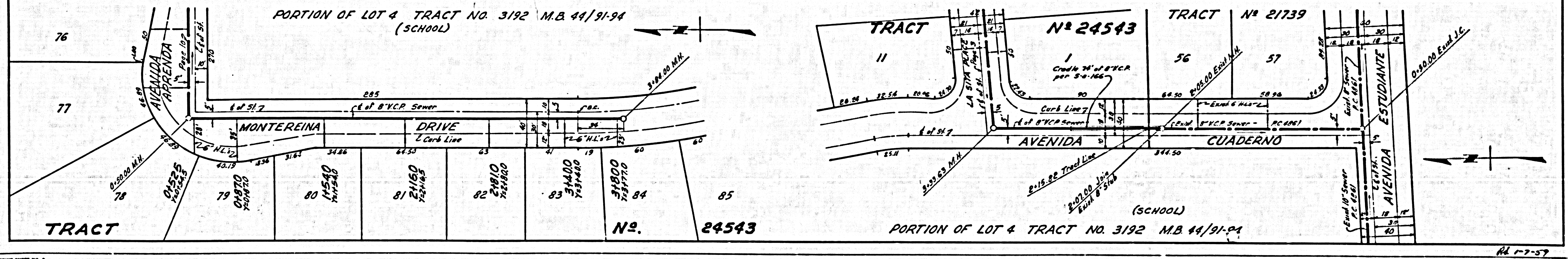
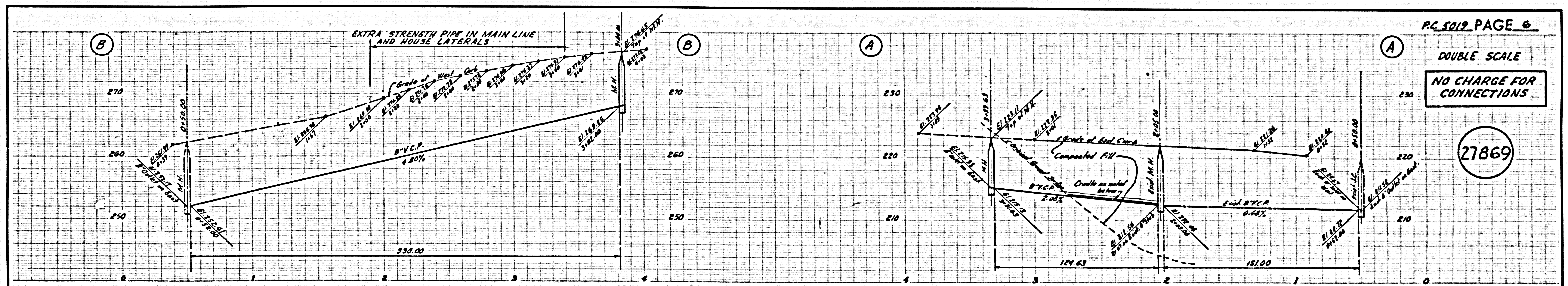
NO CHARGE FOR CONNECTIONS

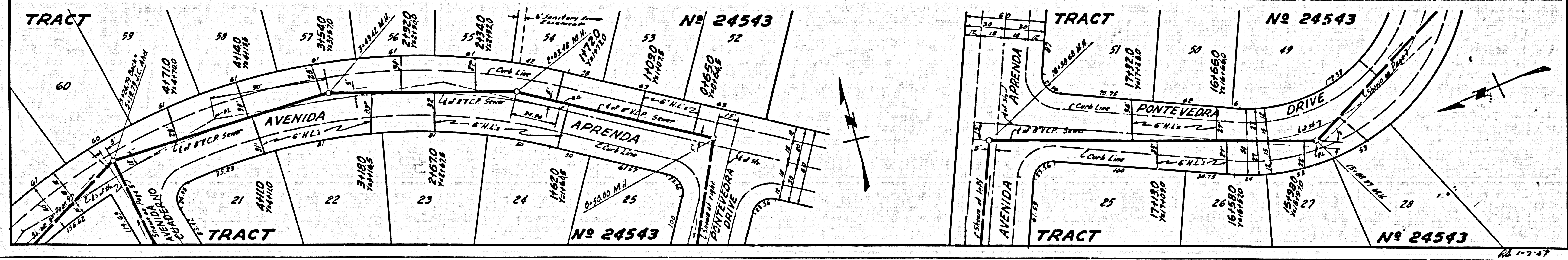
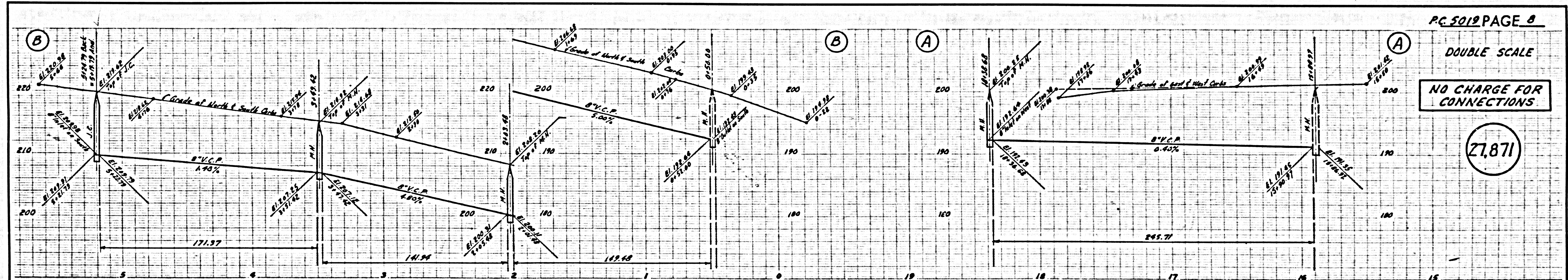
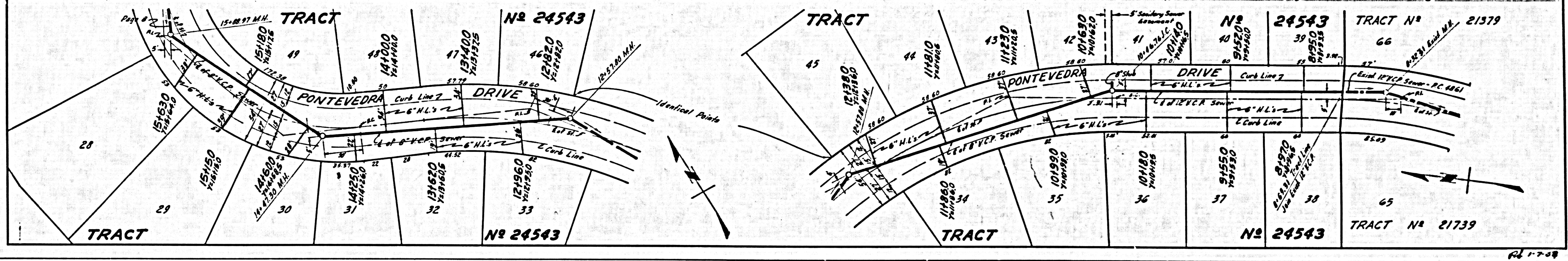
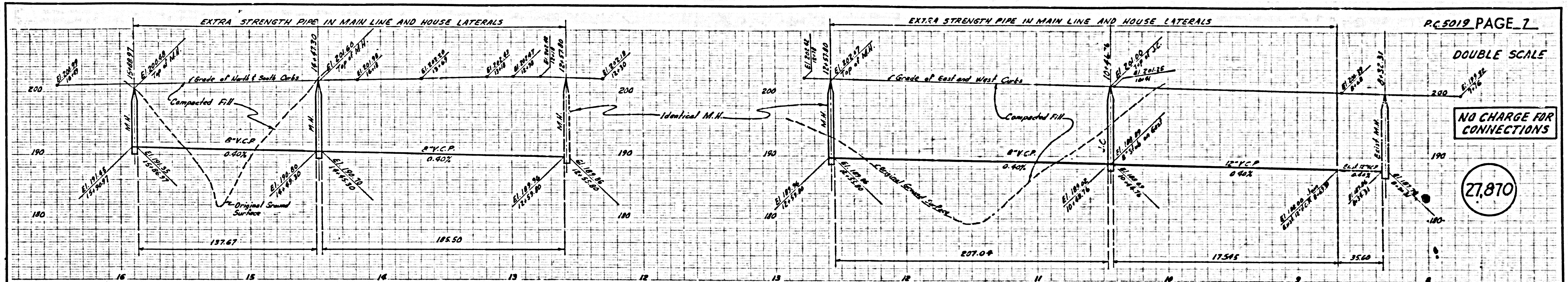
27868



NO CHARGE FOR CONNECTIONS

27869



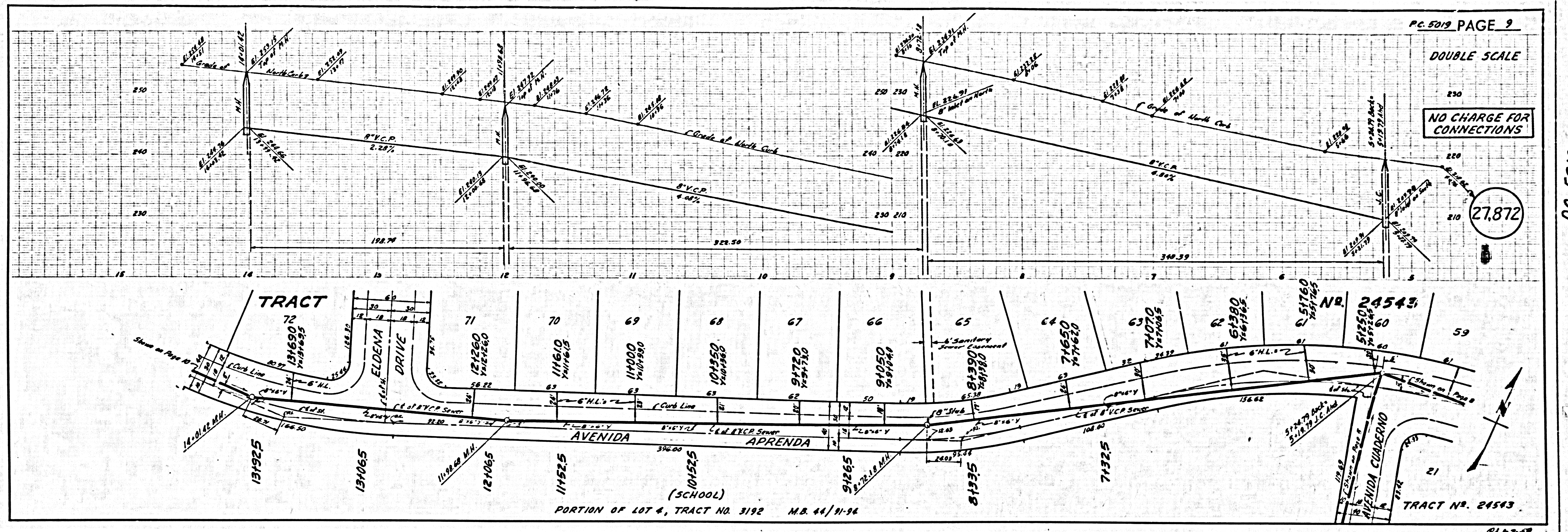


PC-5019

DOUBLE SCALE

NO CHARGE FOR CONNECTIONS

27.872



DOUBLE SCALE
NO CHARGE FOR CONNECTIONS

27.873

