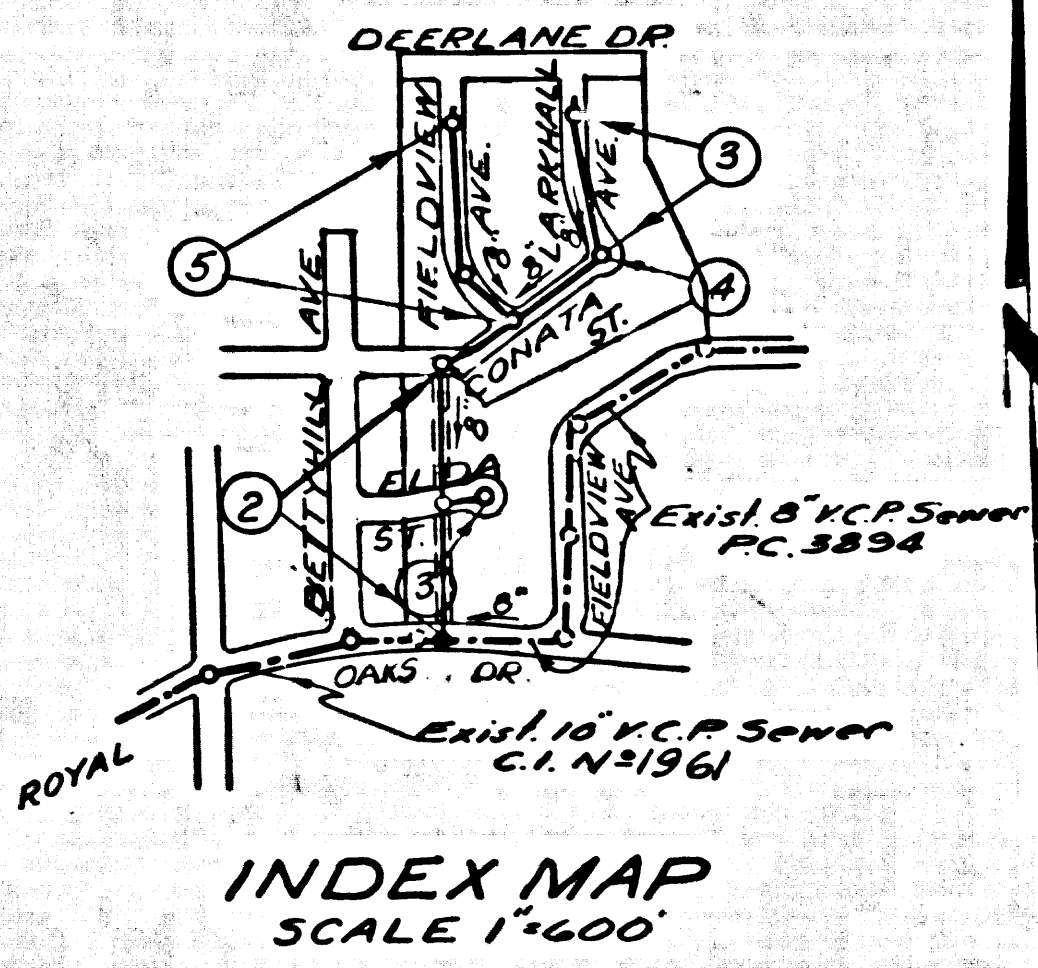


**BENCH MARK** 11-19 El. 579.888 F.B. 1376 Pg. 21  
 A bronze tablet encased in concrete post 35' Northerly  
 & 20' East of Fish Canyon Road & Foothill Boulevard  
 Stamped 5-57-1923 L.A. COUNTY PLN-52 ADJUSTMENT



NO CHARGE FOR CONNECTIONS  
 B.M. Caldwell 4-21-58

**DUARTE BLDG. DIST. NO. 502**

- NOTES**
- PROVIDE STAKES ON THE PROPERTY LINE OR PROPERTY LINES PRODUCED AT RIGHT ANGLES TO THE SEWER LINE AT THE CENTER LINE OF EACH MANHOLE.
  - NO REPRESENTATIVE OF THE CITY ENGINEER WILL SURVEY OR LAYOUT ANY PORTION OF THE WORK.
  - THE OWNER OR HIS AUTHORIZED REPRESENTATIVE SHALL FURNISH THE CITY ENGINEER WITH GRADE SHEETS AND STATIONING FOR ALL HOUSE LATERALS AND Y BRANCHES AND SHALL PROVIDE STAKES FOR THEM AT THEIR PROPER LOCATIONS WITH STATIONING PLAINLY MARKED. ANY CHANGE IN LOCATION SHALL BE RECORDED IN WRITING BY THE OWNER OR HIS REPRESENTATIVE.
  - NO REVISIONS SHALL BE MADE IN THESE PLANS WITHOUT THE APPROVAL OF THE CITY ENGINEER.
  - USE STANDARD MANHOLE FRAMES AND COVERS, S-A-117.
  - USE STANDARD STRENGTH PIPE EXCEPT AS NOTED.
  - USE CEMENT MORTAR OR "WEDGE-LOCK" OR "SPEED-SEAL" FOR ALL VITRIFIED CLAY PIPE JOINTS PER SPEC'S SEC. 54-249.
  - RESURFACE ALL TRENCH WITHIN PAVED AREA TO MEET L. A. COUNTY ROAD DEPT., OR CALIF. STATE HIGHWAY DEPT. REQUIREMENTS IN ACCORDANCE WITH PERMITS.
  - ENCASE FOUR FEET OF SEWER AT POINTS OF INTERFERENCE WITH POLES, S-A-172 CASE III.
  - HOUSE LATERALS TO BE CONSTRUCTED WITH INVERTS AT PROPERTY LINE 6 FEET BELOW CURB GRADE EXCEPT AS NOTED.
  - ALL STRUCTURES SHALL BE BRICK SEWER STRUCTURES, S-A-104.
  - FOR ALLOWABLE LEAKAGE TEST USE FORMULA NO. \_\_\_\_\_ SPEC'S, SEC. 54.
  - MANHOLE TOPS IN UNIMPROVED RIGHTS-OF-WAY TO BE 6" ABOVE FINISHED GRADE.
  - THE PRIVATE ENGINEER IS TO FURNISH THE HOUSE LATERAL DEPTH AT THE PROPERTY LINE BELOW THE TOP OF CURB ELEVATION FOR EACH HOUSE LATERAL ON THE GRADE SHEET.
  - THE CONTRACTOR SHALL NOTIFY THE CONSTRUCTION AND STORM DRAIN DIVISION BY TELEPHONE, MADISON 9-421 EXT. 362 AT LEAST 24 HOURS BEFORE STARTING ANY WORK UNDER THIS CONTRACT.

PROFILE ALIGNMENT AND GRADE OF **P.C. 5023**  
**SANITARY SEWERS** PAGE 1  
 TO BE CONSTRUCTED IN **J.N. 0875.19**

**TRACT No 21830**  
 M.B. 616-56-59

**PRIVATE CONTRACT NO. 5023**

W.S. 47  
 3 SHEETS; 5 PAGES

SCALE: VERT. 1"=4' HORIZ. 1"=40'  
**JANUARY 1959**

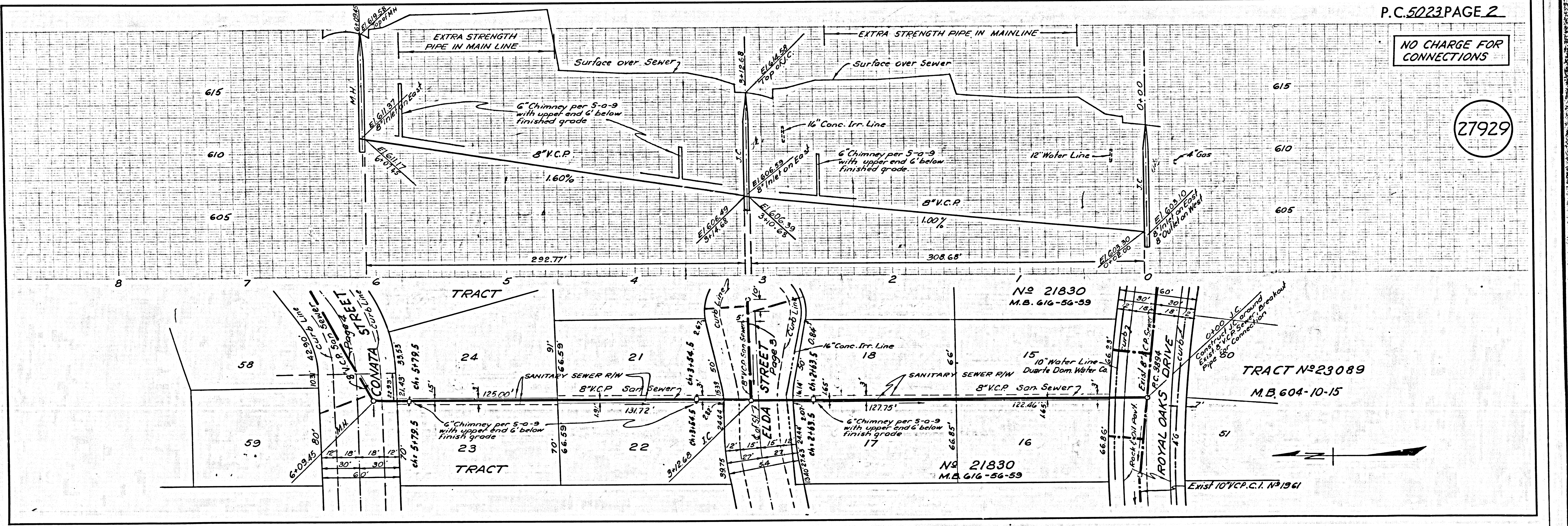
PREPARED IN THE OFFICES OF  
**ADAMS & ELLS - ENGINEERS**

27928

BY: *J.C. Ellis* REG. C. E. NO. 617  
 FOR LEGEND SEE PLAN NO. S-A-64

**NOTE:**  
 GRADES TO WHICH THIS IMPROVEMENT IS TO BE CONSTRUCTED ARE SHOWN ON PLANS AND PROFILES. GRADE POINTS FOR TOP OF CURBS, CENTER LINE OF STREETS, OR CENTER LINE OF ALLEYS ARE SHOWN BY CIRCLES ON PROFILES. AT ALL POINTS BETWEEN DESIGNATED POINTS THE GRADE SHALL BE ESTABLISHED SO AS TO CONFORM TO A STRAIGHT LINE DRAWN BETWEEN SAID DESIGNATED POINTS.  
 ELEVATIONS ARE IN FEET ABOVE U.S. C&G.S. SEA LEVEL DATUM OF 1929.  
 THIS DRAWING AND THE DATA HEREON ARE HEREBY MADE A PART OF THE SPECIFICATIONS.  
 WORK SHALL BE CONSTRUCTED ACCORDING TO SPECIFICATIONS ON FILE IN THE OFFICE OF THE CITY ENGINEER AND SHALL BE PROTECTED ONLY IN THE PRESENCE OF THE CITY ENGINEER.  
 BEFORE WORK CAN BE STARTED, THE CONTRACTOR MUST OBTAIN A PERMIT TO EXCAVATE IN CITY STREETS FROM THE L.A. COUNTY ROAD DEPT., DIST. NO. 1 AND MAKE A DEPOSIT WITH THE CITY OF DUARTE, 1624 S. 26 STREET TOWARDS THE COST OF CONSTRUCTION INSPECTION AND RECORD PLANS.  
 APPROVAL OF THIS PLAN BY THE CITY OF DUARTE DOES NOT CONSTITUTE A REPRESENTATION AS TO THE ACCURACY OF THE LOCATION OF OR THE EXISTENCE OR NON-EXISTENCE OF ANY UNDERGROUND UTILITY PIPE, OR STRUCTURE WITHIN THE LIMITS OF THE PROJECT. THIS NOTE APPLIES TO ALL PAGES.  
 IF WORK IS TO BE DONE IN A STATE HIGHWAY, A PERMIT MUST BE OBTAINED FROM THE STATE OF CALIFORNIA, DIVISION OF HIGHWAYS, 120 SOUTH SPRING STREET.

**CITY OF DUARTE, CALIFORNIA**  
 APPROVED, JOHN A. LAMBIE, CITY ENGINEER  
 APPROVED, C.P. COMPTON, CHIEF ENGINEER  
 BY: *J.C. Hughes* SANITARY ENGINEER  
 BY: *J. Posthumus* OFFICE ENGINEER  
 CHECKED BY: *S.K. Olin* 4-21-59  
 OFFICE OF CITY ENGINEER, REG. C. E. NO. 9406



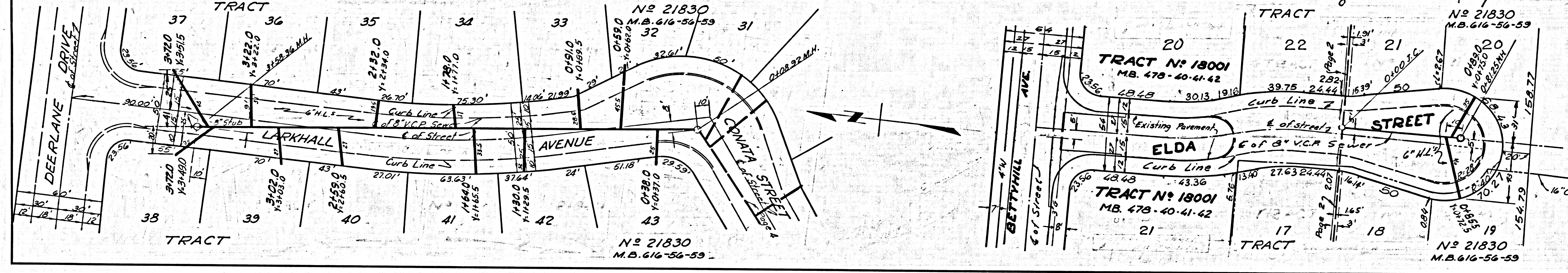
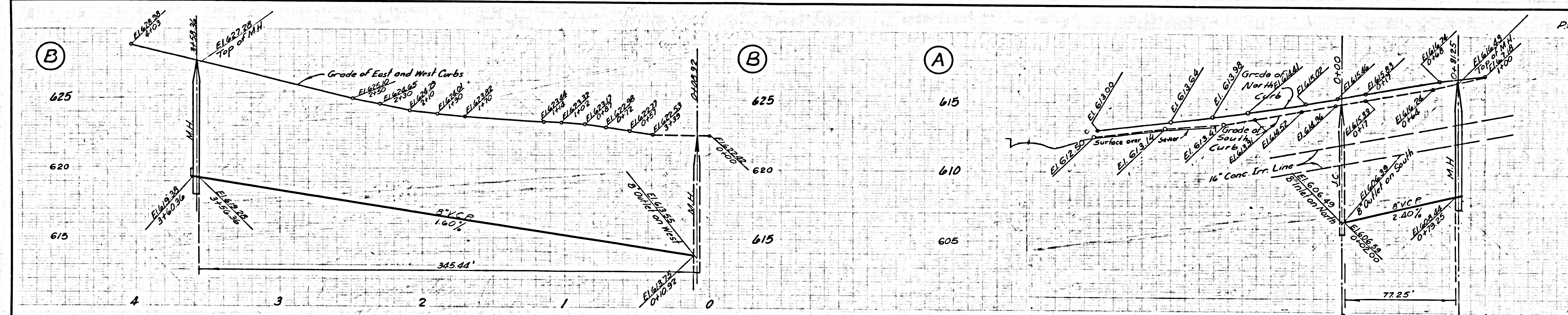
P.C. 5023 PAGE 2

NO CHARGE FOR CONNECTIONS

27929

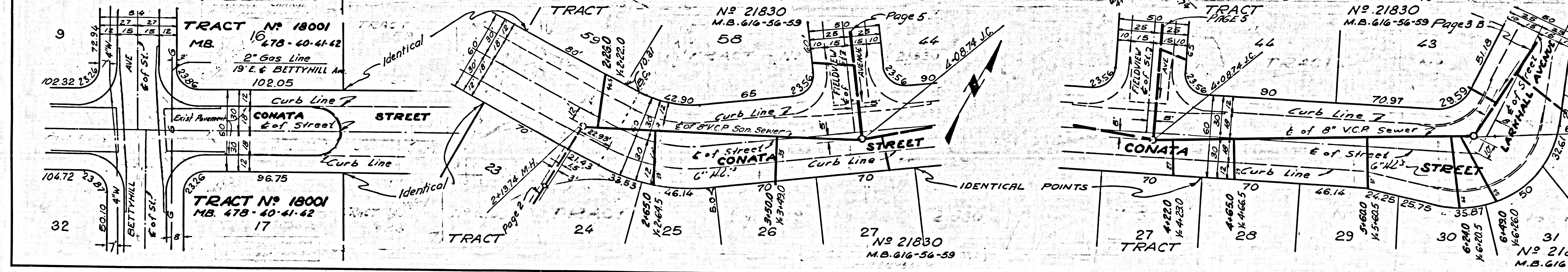
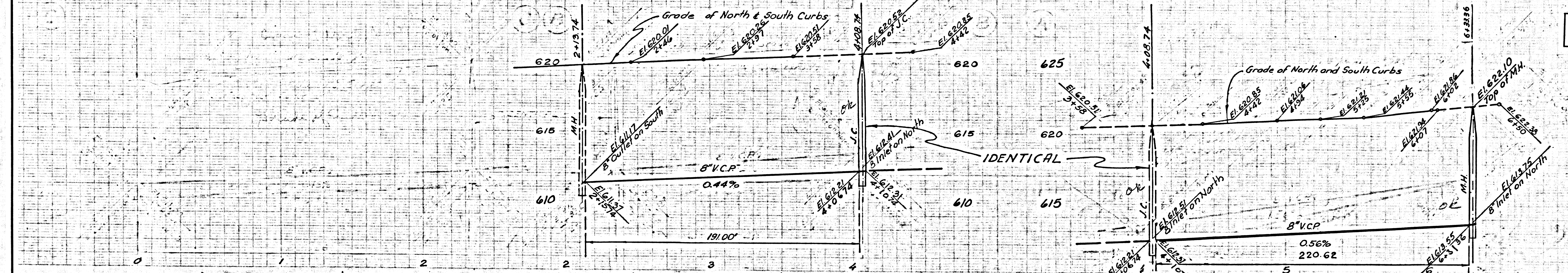
NO CHARGE FOR CONNECTIONS

27930



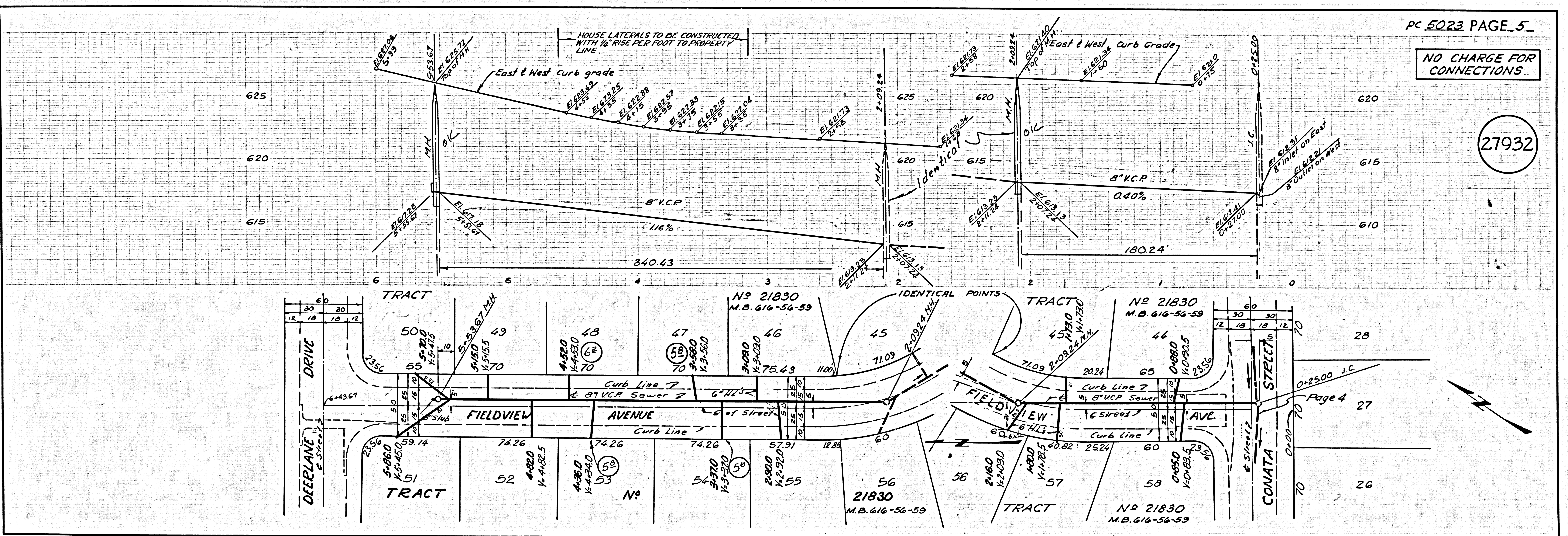
NO CHARGE FOR CONNECTIONS

27931



NO CHARGE FOR CONNECTIONS

27932



Page 4