

TEMPLE CITY BLDG. DIST. NO. 5

PROFILE ALIGNMENT AND GRADE OF **P.C. 5024**  
**SANITARY SEWERS** PAGE **1**  
 TO BE CONSTRUCTED IN **J.N. 0350.01**

**BENCH MARK S.G. 301**  
 RD. HEADED SPIKE # T.E. 520 ± 6.0'  
 N. OF CURB RETURN S.W. CORNER  
 McCULLOCH AVE. & LIVE OAK AVE.  
 ELEV. 351.989 ARCADIA QUAD, 1955

- NOTES
1. PROVIDE STAKES ON THE PROPERTY LINE OR PROPERTY LINES PRODUCED AT RIGHT ANGLES TO THE SEWER LINE AT THE CENTER LINE OF EACH MANHOLE.
  2. NO REPRESENTATIVE OF THE COUNTY ENGINEER WILL SURVEY OR LAY OUT ANY PORTION OF THE WORK.
  3. THE OWNER OR HIS AUTHORIZED REPRESENTATIVE SHALL FURNISH THE COUNTY ENGINEER WITH GRADE SHEETS AND STATIONING FOR ALL HOUSE LATERALS AND T BRANCHES AND SHALL PROVIDE STAKES FOR THEM AT THEIR PROPER LOCATIONS WITH STATIONING PLAINLY MARKED. ANY CHANGE IN LOCATION SHALL BE REQUESTED IN WRITING BY THE OWNER OR HIS REPRESENTATIVE.
  4. THE PRIVATE ENGINEER SHALL FURNISH THE HOUSE LATERAL DEPTH AT THE PROPERTY LINE BELOW THE TOP OF CURB ELEVATION FOR EACH HOUSE LATERAL ON THE GRADE SHEET.
  5. NO REVISIONS SHALL BE MADE IN THESE PLANS WITHOUT THE APPROVAL OF THE COUNTY ENGINEER.
  6. USE STANDARD MANHOLE FRAMES AND COVERS, S-117.
  7. USE STANDARD STRENGTH PIPE.
  8. USE CEMENT MORTAR OF "WEDGE LOCK" OR "SPIN-BLAST" FOR ALL V.C.P. JOINTS PER SPECS. SECS. 28 & 29.
  9. RESURFACE ALL TRENCH WITHIN PAVED AREA TO MEET L.A. COUNTY ROAD DEPT. OR CALIF. STATE HIGHWAY REQUIREMENTS IN ACCORDANCE WITH PERMITS.
  10. ENCASE FOUR FEET OF SEWER AT POINTS OF INTERFERENCE WITH POLES, CASE III, S-172.
  11. HOUSE LATERALS TO BE CONSTRUCTED WITH INVERTS AT PROPERTY LINE 6 FEET BELOW CURB GRADE EXCEPT AS NOTED.
  12. ALL STRUCTURES SHALL BE BRICK SEWER STRUCTURES, S-104.
  13. FOR ALLOWABLE LEAKAGE TEST USE FORMULA NO. 1, SPECS. SEC. 54.
  14. MANHOLE TOPS IN UNIMPROVED RIGHTS-OF-WAY TO BE 2 1/2 INCHES ABOVE FINISHED GRADE.
  15. THE CONTRACTOR SHALL NOTIFY THE CONSTRUCTION & STORM DRAIN DIVISION BY TELEPHONE, MADISON 9-440, EXT. 348, AT LEAST TWENTY-FOUR HOURS BEFORE STARTING ANY WORK UNDER THIS CONTRACT.

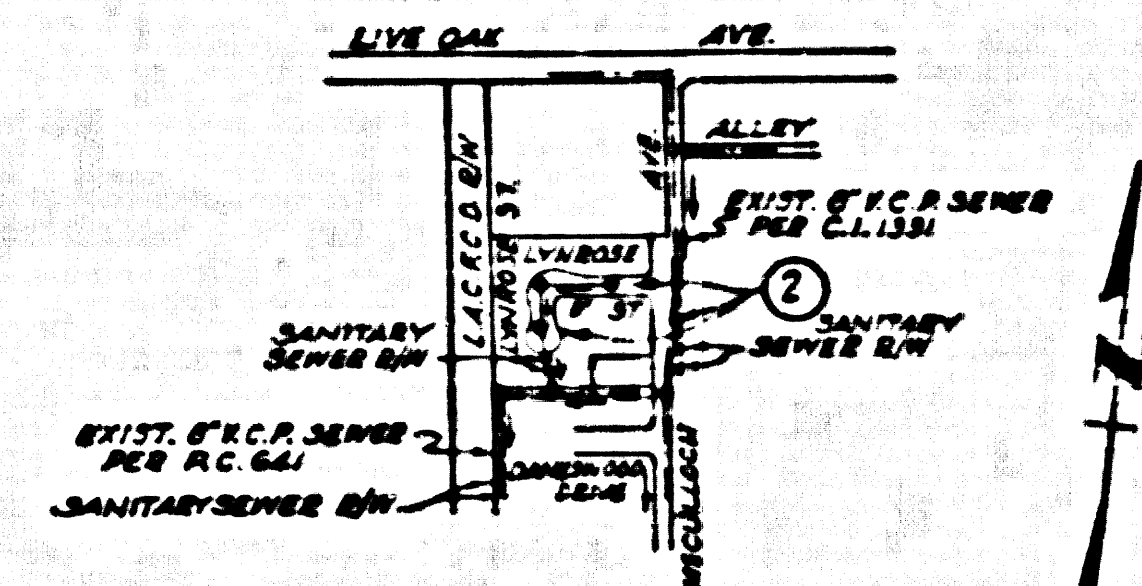
TRACT NO 24579  
 PRIVATE CONTRACT NO. 5024

W.S. 46  
 1 SHEET, 2 PAGES  
 SCALE: VERT. 1"=4' HORIZ. 1"=40'  
 JANUARY, 1959

PREPARED IN THE OFFICES OF  
**A. RICHARD BROWN, JR.**  
 7533 COMWELLWAY AVE. BUENA PARK, CALIF.  
 PHONE: LAWRENCE 2-2333  
 REG. C. E. NO. 3353

FOR LEGEND SEE PLAN NO. S-A-64

NO CHARGE  
 FOR CONNECTIONS  
*B.M. Caldwell*



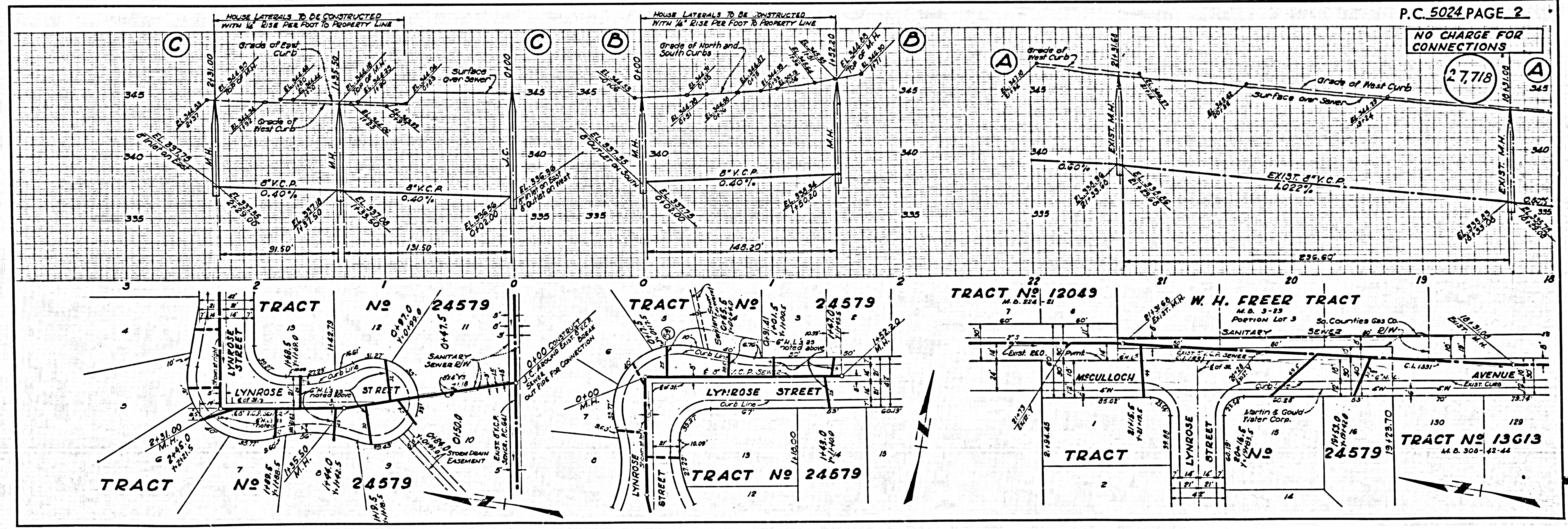
INDEX MAP  
 SCALE: 1"=600'  
 TRACT NO 24579  
 P.C. 5024

NOTE:  
 GRADES TO WHICH THIS IMPROVEMENT IS TO BE CONSTRUCTED ARE SHOWN ON PLANS AND PROFILE GRADE POINTS ARE TOP OF CURB, CENTER LINE OF STREET, OR CENTER LINE OF ALLEY AS SHOWN BY CIRCLES ON PROFILE. AT ALL POINTS BETWEEN DESIGNATED POINTS THE GRADE SHALL BE ESTABLISHED SO AS TO COMPLY TO A STRAIGHT LINE DRAWN BETWEEN SAID DESIGNATED POINTS.  
 ELEVATIONS ARE IN FEET ABOVE U.S.C. & G.S. SEA LEVEL DATUM OF 1929.  
 THIS DRAWING AND THE DATA HEREON ARE HEREBY MADE A PART OF THE SPECIFICATIONS.  
 BEFORE WORK CAN BE STARTED, THE CONTRACTOR MUST OBTAIN A PERMIT TO EXCAVATE IN COUNTY STREETS FROM THE L.A. COUNTY ROAD DEPT., DISTRICT OFFICE NO. 1, AND MAKE A DEPOSIT WITH THE COUNTY ENGINEER, ROOM 324 PAM AMERICAN BUILDING, 228 SO. BROADWAY, SUFFICIENT TO COVER THE COST OF CONSTRUCTION INSPECTION AND RECORD PLANS.  
 APPROVAL OF THIS PLAN BY THE COUNTY OF LOS ANGELES DOES NOT CONSTITUTE A REPRESENTATION AS TO THE ACCURACY OF THE LOCATION OF OR THE EXISTENCE OR NON-EXISTENCE OF ANY UNDERGROUND UTILITY PIPE, OR STRUCTURE WITHIN THE LIMITS OF THE PROJECT. THIS NOTE APPLIES TO ALL PAGES.  
 IF WORK IS TO BE DONE IN A STATE HIGHWAY, A PERMIT MUST BE OBTAINED FROM THE STATE OF CALIFORNIA, DIVISION OF HIGHWAYS, 128 SOUTH BRIDGE STREET.

COUNTY OF LOS ANGELES, CALIFORNIA

APPROVED, JOHN A. LAMBE, COUNTY ENGINEER  
 APPROVED, C.R. COMPTON, CHIEF ENGINEER  
 BY *A.H. Douglas* SANITATION ENGINEER  
 BY *H. H. Harrison* OFFICE ENGINEER  
 CHECKED BY *R.V. Quisenberry*  
 OFFICE OF COUNTY ENGINEER, R.F. C. & NO. 5426

SUBMITTED *N.F. Brannock*  
 SAN GABRIEL VALLEY REGIONAL ENGINEER



P.C. 5024 PAGE 2

NO CHARGE  
 FOR CONNECTIONS  
 27,718