

B.M. SY 4038, Elev. 146.191, C.S. Precise 1955 Adj.  
 L. & B. No. 1 West Curb Luitwiler Ave., 100' South  
 of E. Whittier Dr. Opp. P.P. 106350 E  
 LA MIRADA QUAD

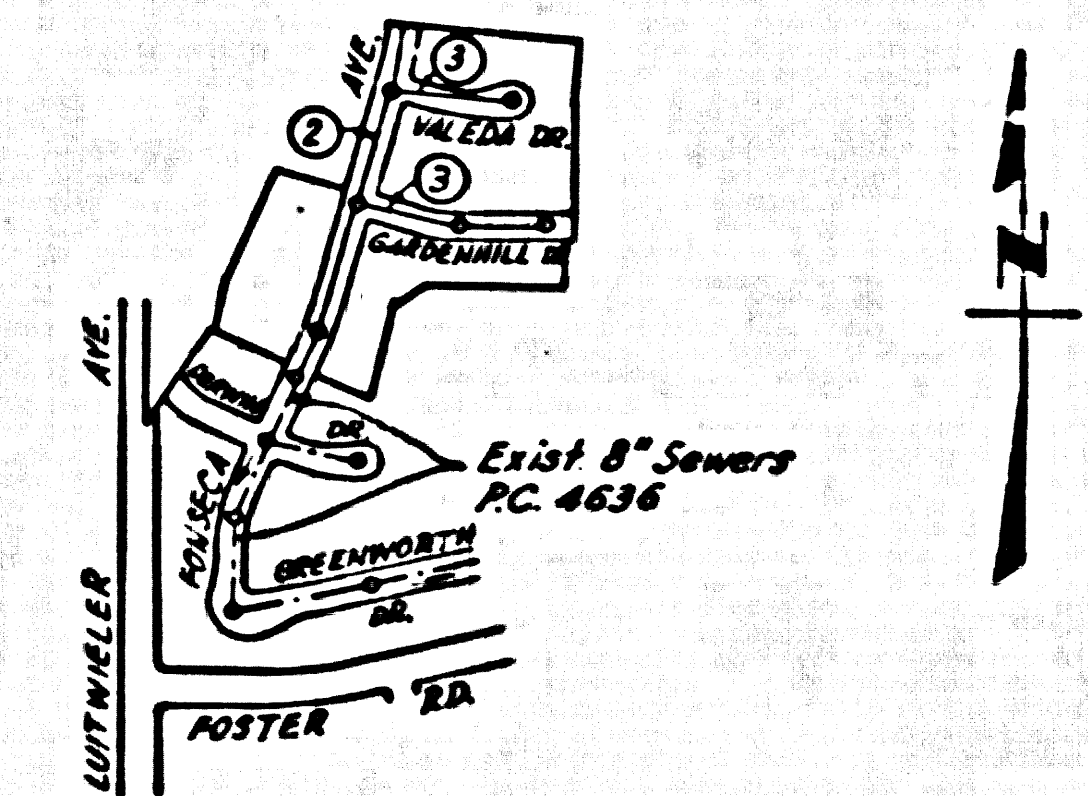
# NORWALK BLDG. DIST. NO. 42

PROFILE ALIGNMENT AND GRADE OF P.C. 5026  
 SANITARY SEWERS PAGE 1  
 TO BE CONSTRUCTED IN J.N. 0350.02

TRACT No 24145 (26997)  
 PRIVATE CONTRACT NO. 5026  
 JOB NUMBER 0350.02  
 W.S. 34

2 SHEETS, 3 PAGES  
 SCALE: 1" = 40' JANUARY, 1959  
 PREPARED IN THE OFFICES OF  
 JENNINGS ENGINEERING CO.  
 3818 N. PICO BLVD., L.A. 35, CALIF.  
 BY: *G. J. Jennings* REG. C.E. NO. 7458  
 FOR LEGEND SEE PLAN NO. S-A-64

- NOTE:  
 PROVIDE STAKES ON THE PROPERTY LINE OR PROPERTY LINES PRODUCED AT RIGHT ANGLES TO THE SEWER LINE AT THE CENTER LINE OF EACH MANHOLE.
- NO REPRESENTATIVE OF THE COUNTY ENGINEER WILL SURVEY OR LAY OUT ANY PORTION OF THE WORK.
  - THE OWNER OR HIS AUTHORIZED REPRESENTATIVE SHALL FURNISH THE COUNTY ENGINEER WITH GRASS SHEETS AND STATION FOR ALL HOUSE LATERALS AND Y BRANCHES AND SHALL PROVIDE T-PIES FOR THEM AT THEIR PROPER LOCATIONS WITH STATIONING AND PLANNED MARKS. ANY CHANGE IN LOCATION SHALL BE REQUESTED IN WRITING BY THE OWNER OR HIS REPRESENTATIVE. NO REVISIONS SHALL BE MADE IN THESE PLANS WITHOUT THE APPROVAL OF THE COUNTY ENGINEER.
  - USE STANDARD MANHOLE FRAMES AND COVERS, S.A. 1117.
  - USE STANDARD STRENGTH PIP.
  - USE CEMENT MORTAR, "WEDGE-LOCK" OR "SPREAD-SEAL" FOR ALL K.C.P. JOINTS PER SPECS, SECS. 5, 6 & 7.
  - RESURFACE ALL DRIVEWAYS WITHIN PAVED AREA TO MEET L.A. COUNTY ROAD DEPT. OR CALIF. STATE HIGHWAY DEPT. SPECIFICATIONS IN ACCORDANCE WITH PROFILES.
  - ENCASE FOUR FEET OF SEWER AT POINTS OF INTERFERENCE WITH POLES, S.A. 176, III.
  - HOUSE LATERALS TO BE CONSTRUCTED WITH INVERTS AT PROPERTY LINE  $\frac{1}{2}$  FEET BELOW CURB GRADE EXCEPT AS NOTED.
  - ALL STRUCTURES SHALL BE BRICK SEWER STRUCTURES, S.A. 104.
  - FOR ALLOWABLE LEAKAGE TEST USE FORMULA NO. 1 SPECS, SEC. 5A.
  - MANHOLE TOPS IN UNIMPROVED RIGHTS-OF-WAY TO BE 6" ABOVE FINISHED GRADE.
  - THE PRIVATE ENGINEER IS TO FURNISH THE HOUSE LATERAL DEPTH AT THE PROPERTY LINE BELOW THE TOP OF CURB ELEVATION FOR EACH HOUSE LATERAL ON THE SPREAD SHEET. NO CONSTRUCTION SHALL BE PERMITTED IN THE FILLED AREAS UNLESS ACCEPTABLE CERTIFICATION IS SUBMITTED TO THE CONSTRUCTION DIVISION OF THE COUNTY ENGINEER'S DEPARTMENT THAT THE RELATIVE COMPACTION IS GREATER THAN 90% (A) IF COMPACTION IS LESS THAN 90%, SEWER MUST BE GRADED AS SHOWN ON THE PLANS AND S-O 156. (B) IF COMPACTION IS GREATER THAN 90%, CHADLING IS NOT REQUIRED. HOWEVER, JOINT COMPOUND MUST BE SUBSTITUTED FOR CEMENT MORTAR FOR ALL JOINTS IN FILLED AREAS.



P.C. 5026  
 INDEX MAP  
 TRACT No 24145  
 SCALE: 1" = 600'

CONNECTION CHARGES  
 AS INDICATED  
*E. Acuña 2-17-59*

NOTE:  
 THE CONTRACTOR SHALL NOTIFY THE CONSTRUCTION AND STORM DRAIN DIVISION BY TELEPHONE, MADISON 9-4747, EX. 3-2, AT LEAST 24 HOURS BEFORE STARTING ANY WORK UNDER THIS CONTRACT.

NOTE:  
 GRADES TO WHICH THIS IMPROVEMENT IS TO BE CONSTRUCTED ARE SHOWN ON PLANS AND PROFILES. GRADE POINTS FOR TOP OF CURB, CENTER LINE OF STREET, OR CENTER LINE OF ALLEY ARE SHOWN BY CIRCLES OR SQUARES AT ALL POINTS BETWEEN DESIGNATED POINTS THE GRADE SHALL BE ESTABLISHED SO AS TO CONFORM TO A STRAIGHT LINE BEYOND THESE DESIGNATED POINTS.

ELEVATIONS ARE IN FEET ABOVE U.S.C. & G.S. SEA LEVEL DATUM OF 1929.

THIS DRAWING AND THE DATA HEREON ARE HEREBY MADE A PART OF THE SPECIFICATIONS.

WORK SHALL BE CONSTRUCTED ACCORDING TO SPECIFICATIONS ON FILE IN THE OFFICE OF THE COUNTY ENGINEER AND SHALL BE PROSECUTED ONLY IN THE PRESENCE OF THE COUNTY ENGINEER.

WORK SHALL BE STARTED THE CONTRACTOR MUST OBTAIN A PERMIT TO EXCAVATE IN COUNTY STREETS FROM THE L.A. COUNTY ROAD DEPT., DIST. 484, AND MAKE A DEPOSIT WITH THE COUNTY ENGINEER, ROOM 324 AMERICAN BUILDING, 315 SO. BROADWAY, SUFFICIENT TO COVER THE COST OF CONSTRUCTION INSPECTION AND RECORD PLANS.

APPROVAL OF THIS PLAN BY THE COUNTY OF LOS ANGELES DOES NOT CONSTITUTE A REPRESENTATION AS TO THE ACCURACY OF THE LOCATION OF OR THE EXISTENCE OR NON-EXISTENCE OF ANY UNDERGROUND UTILITY PIPE, OR STRUCTURE WITHIN THE LIMITS OF THIS PROJECT. THIS NOTE APPLIES TO ALL PAGES.

IF WORK IS TO BE DONE IN A STATE HIGHWAY, A PERMIT MUST BE OBTAINED FROM THE STATE OF CALIFORNIA, DIVISION OF HIGHWAYS, 128 SOUTH BRIDGE STREET.

COUNTY OF LOS ANGELES, CALIFORNIA

APPROVED, JOHN A. LAMBE, COUNTY ENGINEER

APPROVED, C.E. JENNINGS, CHIEF ENGINEER

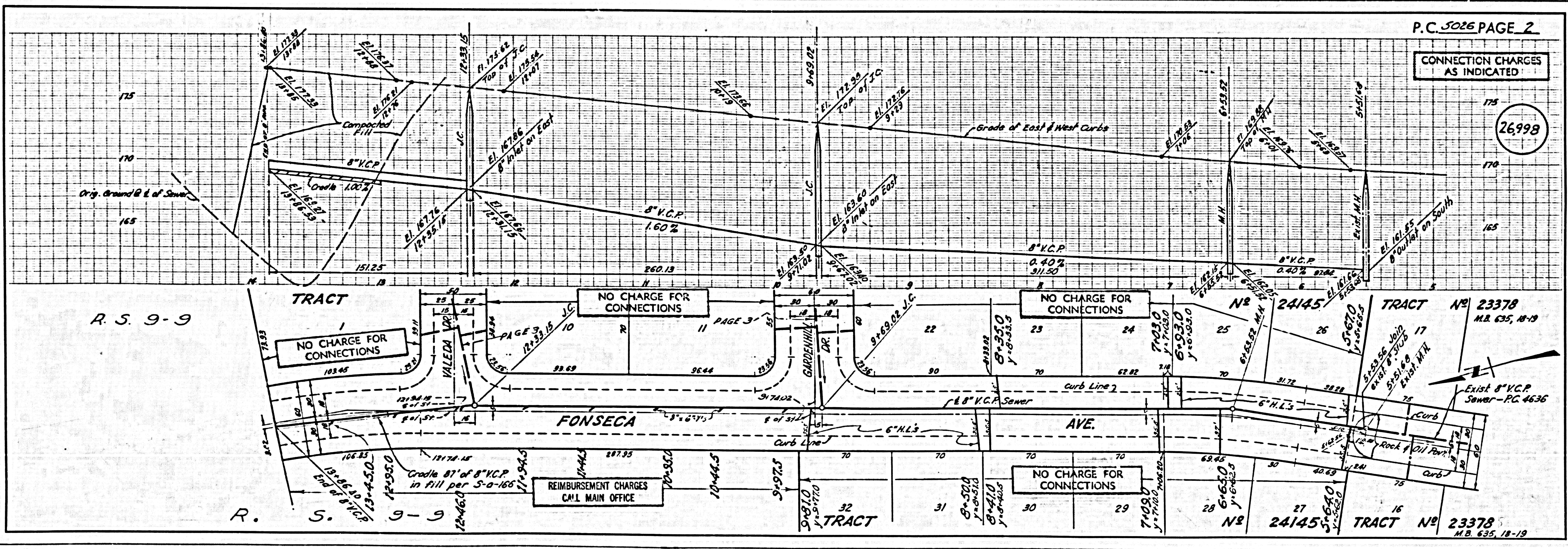
BY: *C. H. Hughes* SANITATION ENGINEER

BY: *J. P. Robinson* OFFICE ENGINEER

CHECKED BY: *St. Onda 2-25-59*

OFFICE OF COUNTY ENGINEER, BUREAU OF SANITATION

SUBMITTED BY: *John L. Estor 2-17-59*  
 LOS ANGELES REGIONAL ENGINEER - P.C. 5026



P.C. 5026 PAGE 2

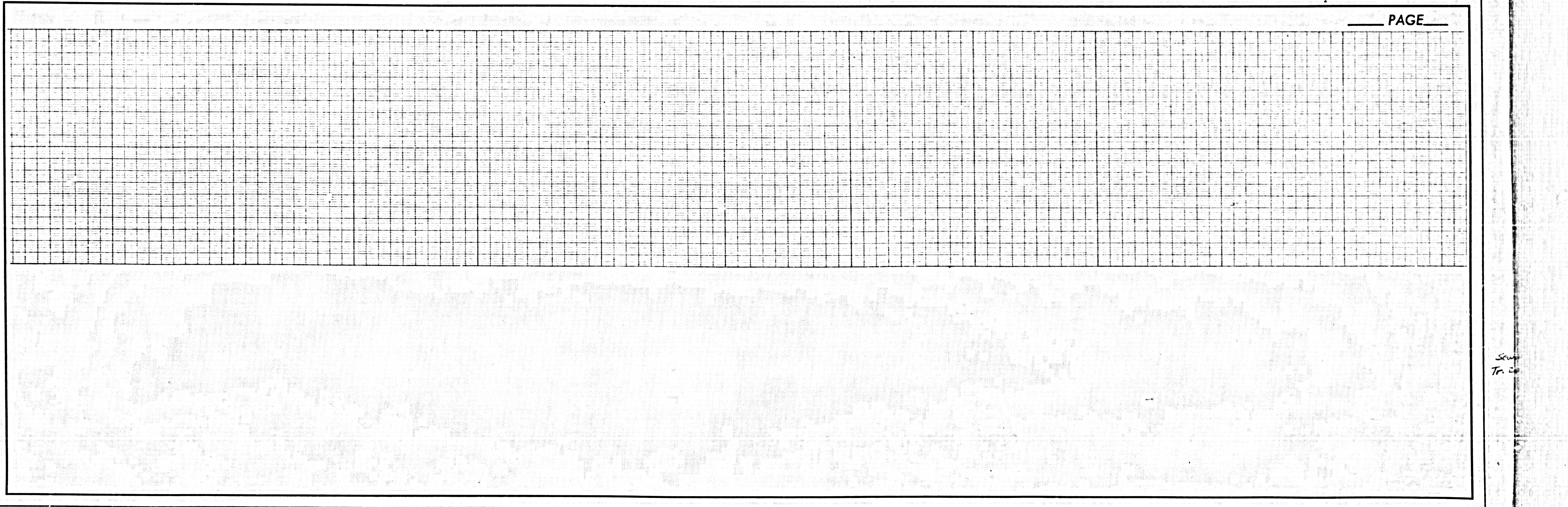
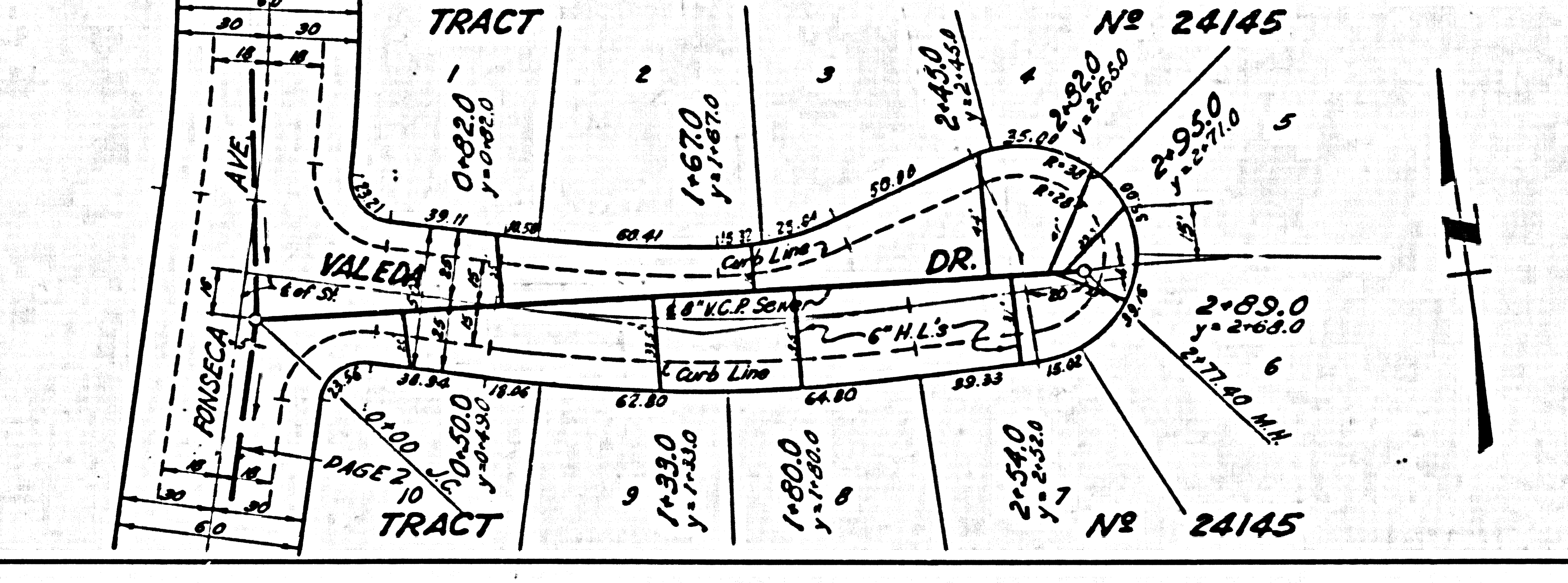
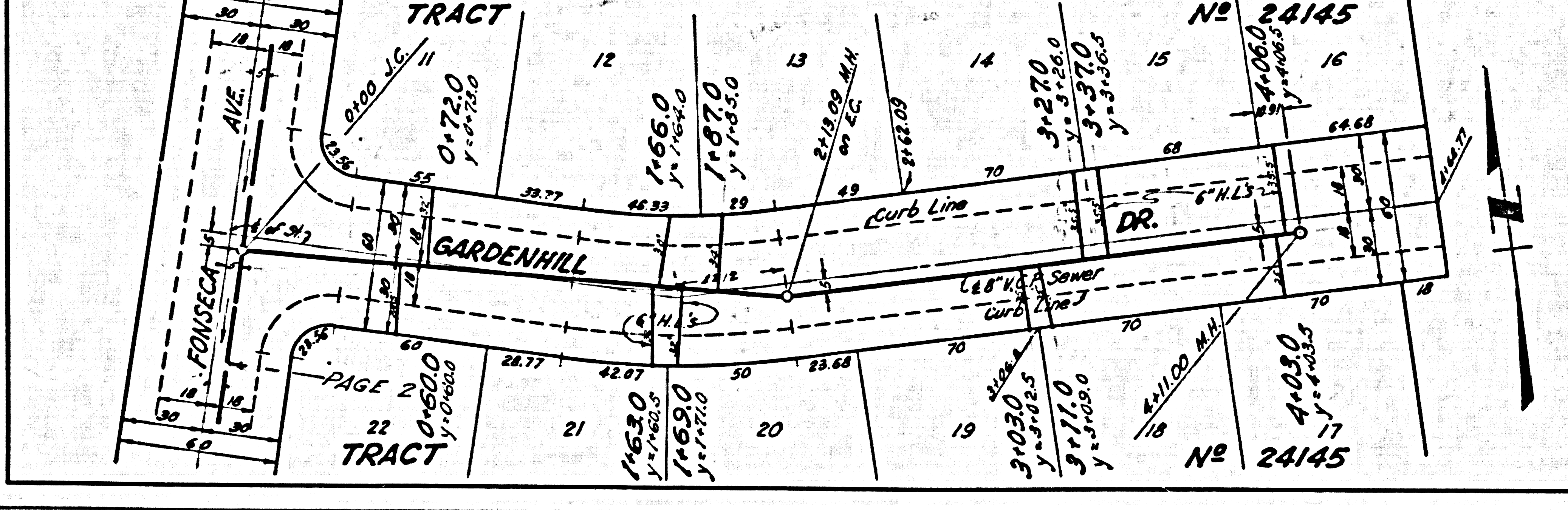
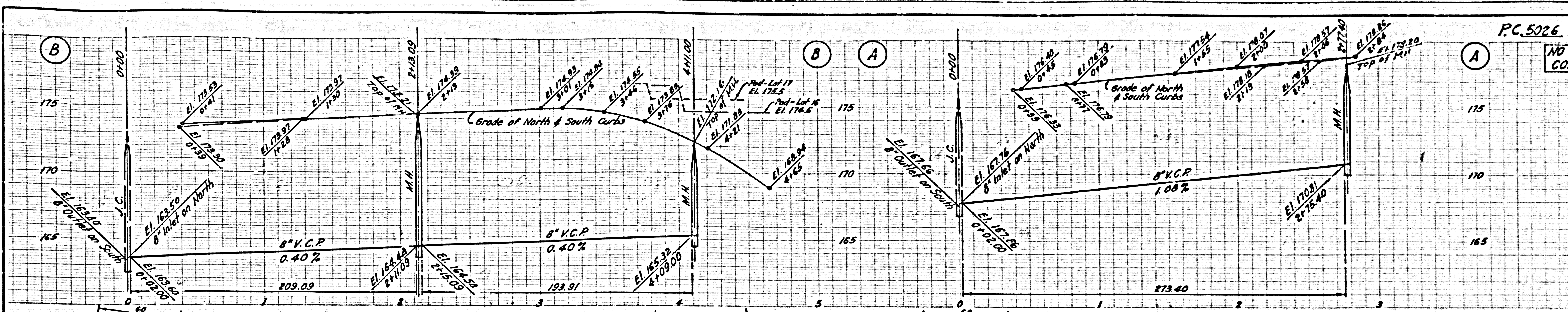
CONNECTION CHARGES  
 AS INDICATED

(26998)



NO CHARGE FOR CONNECTIONS

26999



See Tr. 26