

BENCH MARK
 FOUND STD. C.S. MON. IN WELL
 WITH COVER @ INT. PIONEER BLVD.
 CENTRALIA RD. W/40' DIST. 118
 QUAD. 1956 57 3389
 ELEV. 34.974

NO CHARGE FOR CONNECTIONS
L. C. ... 2-16-59

LAKWOOD BLDG. DIST. NO. 4.3

- NOTES:**
1. PROVIDE STAKES ON THE PROPERTY LINE OR PROPERTY LINES PRODUCE AT RIGHT ANGLES TO THE SEWER LINE AT THE CENTER LINE OF EACH MANHOLE.
 2. NO REPRESENTATIVE OF THE COUNTY ENGINEER WILL SURVEY OR LAY OUT ANY PORTION OF THE WORK.
 3. THE OWNER OR HIS AUTHORIZED REPRESENTATIVE SHALL FURNISH THE COUNTY ENGINEER WITH GRADE SHEETS AND STATIONING FOR ALL HOUSE LATERALS AND Y BRANCHES AND SHALL PROVIDE STAKES FOR THEM AT THEIR PROPER LOCATIONS WITH STATIONING PLAINLY MARKED. ANY CHANGE IN LOCATION SHALL BE REQUESTED IN WRITING BY THE OWNER OR HIS REPRESENTATIVE.
 4. THE PRIVATE ENGINEER SHALL FURNISH THE HOUSE LATERAL DITCH AT THE PROPERTY LINE BELOW THE TOP OF CURB ELEVATION FOR EACH HOUSE LATERAL ON THE GRADE SHEET.
 5. NO REVISIONS SHALL BE MADE IN THESE PLANS WITHOUT THE APPROVAL OF THE COUNTY ENGINEER.
 6. USE STANDARD MANHOLE FRAMES AND COVERS, 2-0-117, EXCEPT AS NOTED.
 7. USE STANDARD STRENGTH PIPE EXCEPT AS NOTED.
 8. USE JOINTY OR "WEDGE LOCK" OR "SPREAD SEAL" FOR ALL V.C.P. JOINTS PER S.P.C.S., SECT. 36 & 37.
 9. RESURFACE ALL TRENCH WITHIN PAVED AREA TO MEET L.A. COUNTY ROAD DEPT. OR CALIF. STATE HIGHWAY REQUIREMENTS IN ACCORDANCE WITH PERMITS.
 10. INCLUDE FOUR FEET OF SEWER AT POINTS OF INTERFERENCE WITH POLES, CASE NO. 2-0-172.
 11. HOUSE LATERALS TO BE CONSTRUCTED WITH INVERTS AT PROPERTY LINE 2'-0" FEET BELOW CURB GRADE EXCEPT AS NOTED.
 12. ALL STRUCTURES SHALL BE BRICK SEWER STRUCTURES, 2-0-104, EXCEPT AS NOTED.
 13. FOR ALLOWABLE LEAKAGE TEST USE FORMULA NO. 2, S.P.C.S., SEC. 34.
 14. MANHOLE TOPS IN UNIMPROVED RIGHTS-OF-WAY TO BE SIX INCHES ABOVE FINISHED GRADE.
 15. THE CONTRACTOR SHALL NOTIFY THE CONSTRUCTION & STORM DRAIN DIVISION BY TELEPHONE, MADISON 2-6700, EXT. 342, AT LEAST TWENTY-FOUR HOURS BEFORE STARTING ANY WORK UNDER THIS CONTRACT.

PROFILE ALIGNMENT AND GRADE OF **P.C. 5028**
SANITARY SEWERS PAGE 1
 TO BE CONSTRUCTED IN
TRACT No 21664

PRIVATE CONTRACT NO. 5028

W.S. 31
 4 SHEETS, 3 PAGES
 SCALE: VERT. 1" = 4' HORIZ. 1" = 40' JAN. 1959
 PREPARED IN THE OFFICES OF
 WOODRUFF, FRANKLE & NELSON
 325 B WASHINGTON BLDG. BOULDER
 WYOMING 82001
 BY: *[Signature]*
 REG. C. E. NO. 3781

28,034

FOR LEGEND SEE PLAN NO. S-A-64

GRADES TO WHICH THIS IMPROVEMENT IS TO BE CONSTRUCTED ARE SHOWN ON PLANS AND PROFILES. GRADE POINTS FOR TOP OF CURB, CENTER LINE OF STREET, OR CENTER LINE OF ALLEY ARE SHOWN BY CIRCLES ON PROFILES. AT ALL POINTS BETWEEN DESIGNATED POINTS THE GRADE SHALL BE ESTABLISHED SO AS TO CONFORM TO A STRAIGHT LINE BETWEEN SAID DESIGNATED POINTS.

STATIONING AND IN FEET ABOVE U.S.C. & G.S. SEA LEVEL DATUM OF 1929.

THIS DRAWING AND THE DATA HEREON ARE HEREBY MADE A PART OF THE SPECIFICATIONS.

WORK SHALL BE CONSTRUCTED ACCORDING TO SPECIFICATIONS ON FILE IN THE OFFICE OF THE COUNTY ENGINEER AND SHALL BE INSPECTED ONLY IN THE PRESENCE OF THE COUNTY ENGINEER.

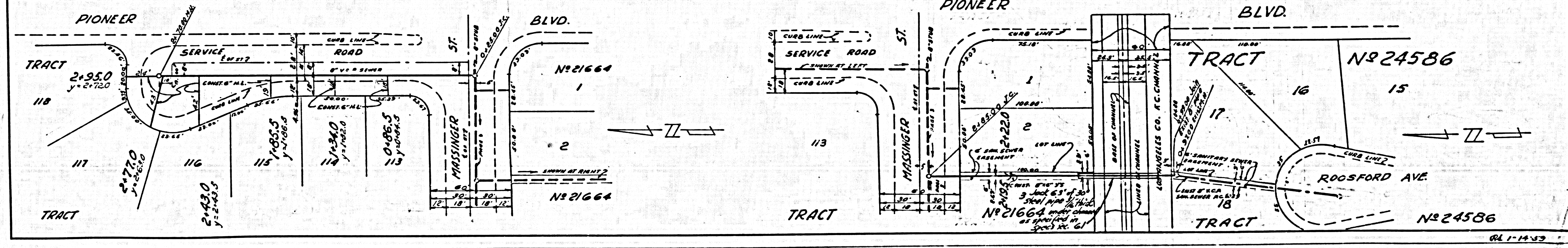
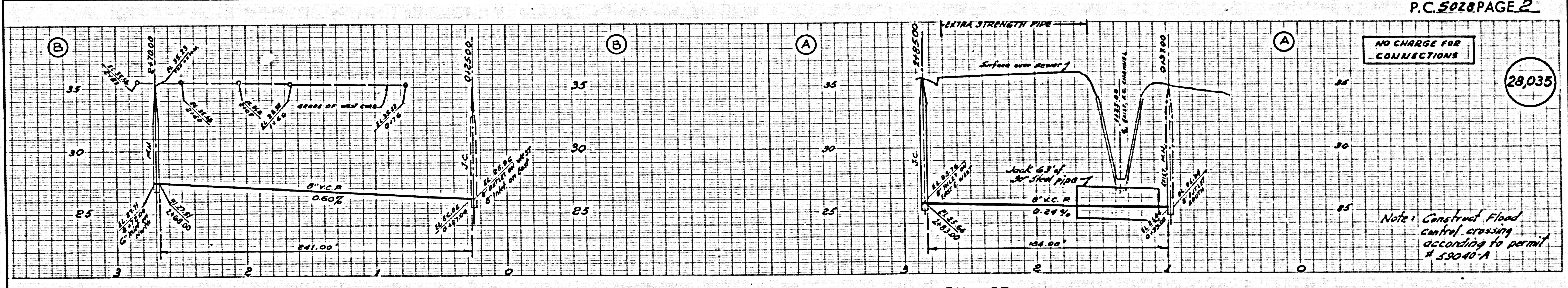
BEFORE WORK CAN BE STARTED, THE CONTRACTOR MUST OBTAIN A PERMIT TO EXCAVATE IN COUNTY STREETS FROM THE L.A. COUNTY ROAD DEPT., DISTRICT NO. 4, AND MAKE A REPORT WITH THE COUNTY ENGINEER, ROOM 224 PARK AVENUE, BUILDING 333 TO BROADWAY SUPPLEMENT TO COVER THE COST OF CONSTRUCTION INSPECTION AND RECORD PLANS.

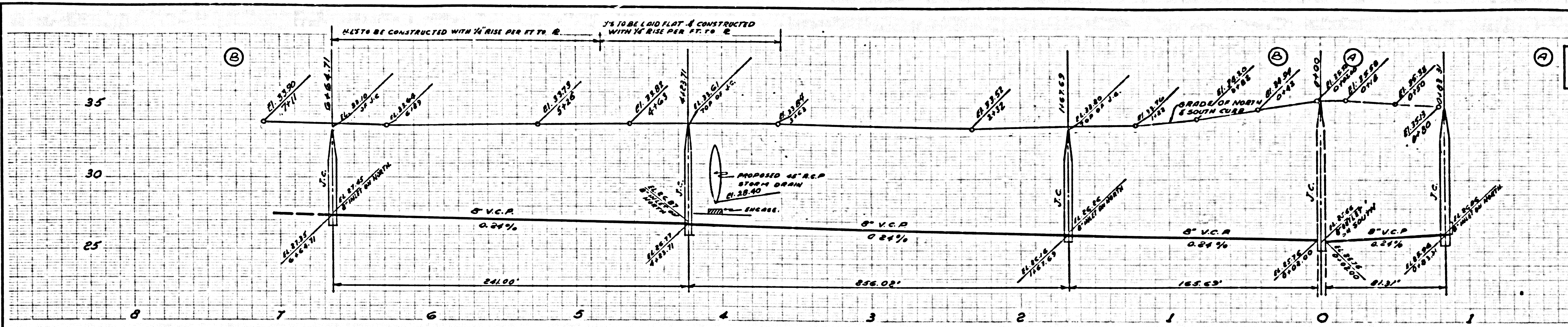
APPROVAL OF THIS PLAN BY THE COUNTY OF LOS ANGELES DOES NOT CONSTITUTE A REPRESENTATION AS TO THE ACCURACY OF THE LOCATION OF OR THE EXISTENCE OR NON-EXISTENCE OF ANY UNDERGROUND UTILITY PIPE, OR STRUCTURE WITHIN THE LIMITS OF THIS PROJECT. THIS NOTE APPLIES TO ALL PAGES.

IF WORK IS TO BE DONE IN A STATE HIGHWAY, A PERMIT MUST BE OBTAINED FROM THE STATE OF CALIFORNIA, DIVISION OF HIGHWAYS, 120 SOUTH SPRING STREET.

COUNTY OF LOS ANGELES, CALIFORNIA

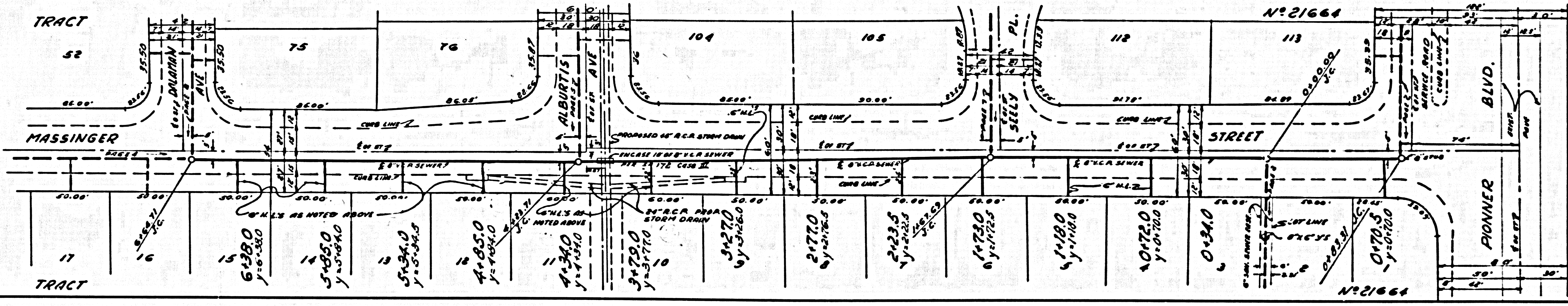
APPROVED, JOHN A. LAMBE, COUNTY ENGINEER
 APPROVED, C. R. CHAFFIN, CHIEF ENGINEER
 BY: *[Signature]* LAMINATION ENGINEER
 BY: *[Signature]* OFFICE ENGINEER
 CHECKED BY: *[Signature]*
 OFFICE OF COUNTY ENGINEER, BLDG. C. E. NO. 3406



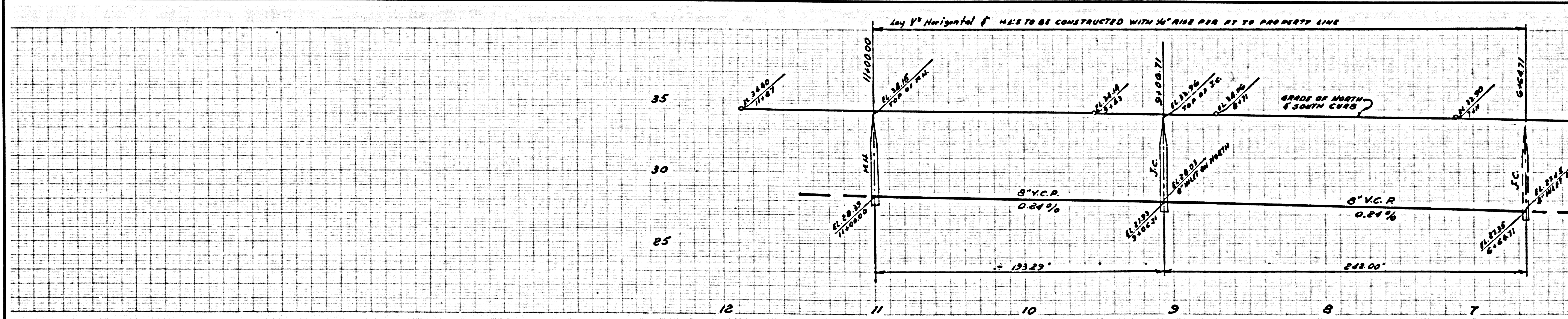


NO CHARGE FOR CONNECTIONS

28,036

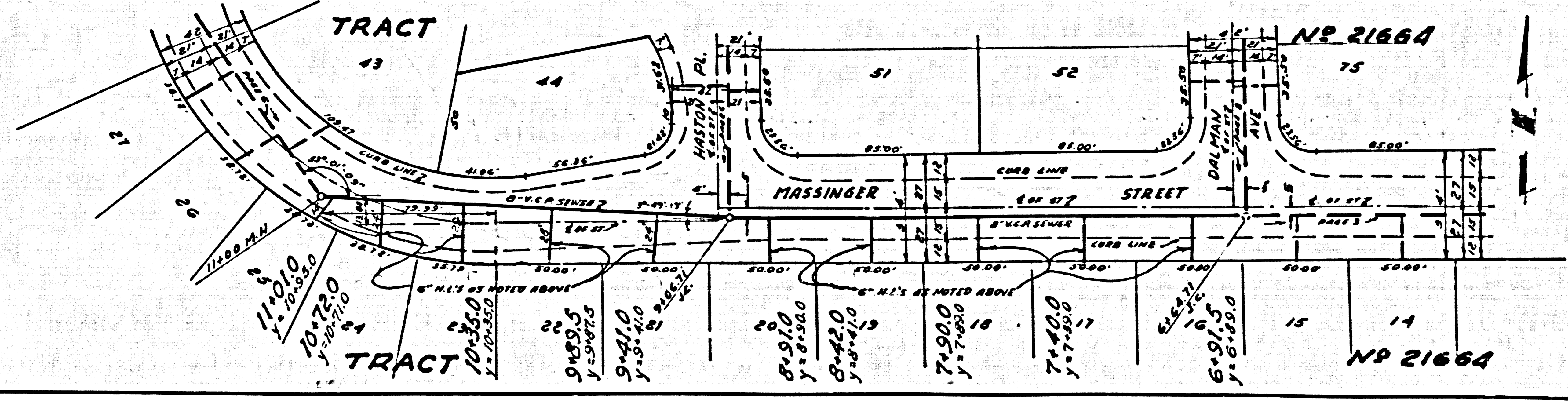


BL 1-14-59



NO CHARGE FOR CONNECTIONS

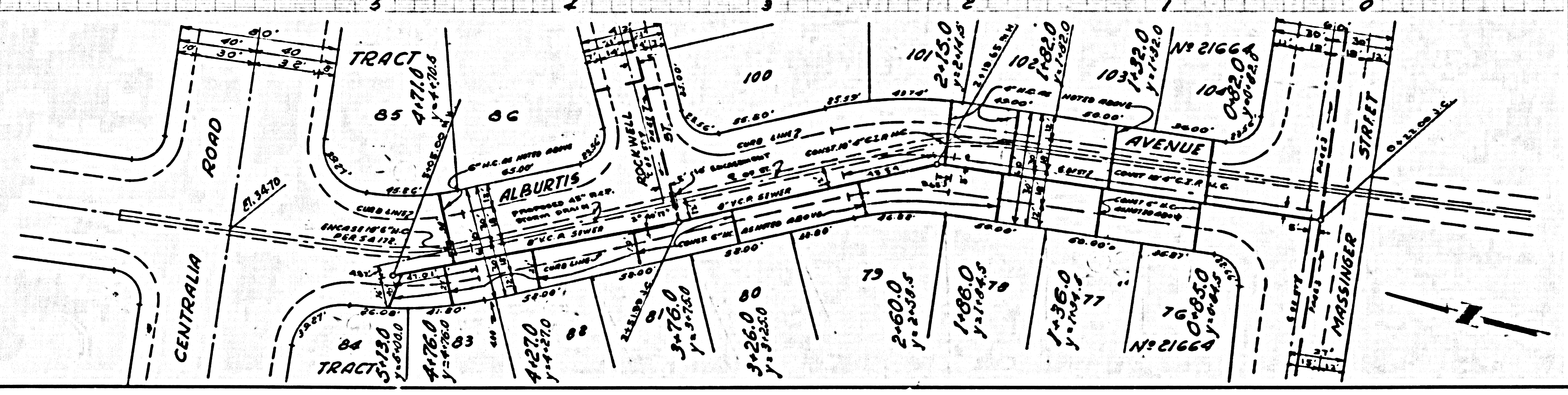
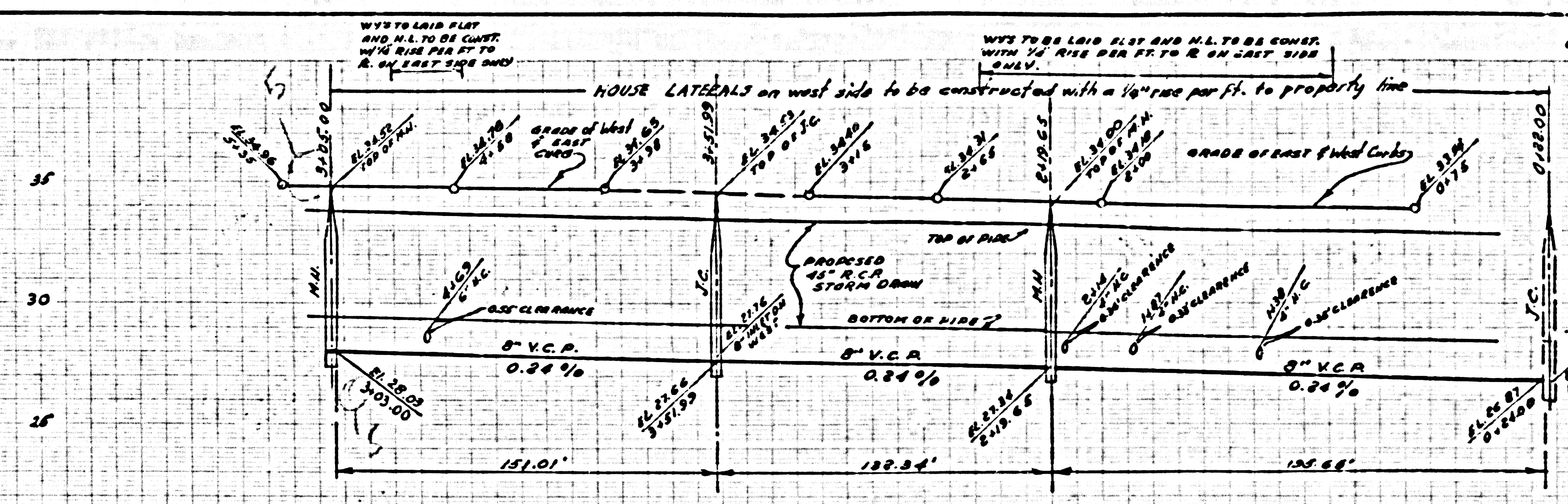
28,037



BL 1-14-59

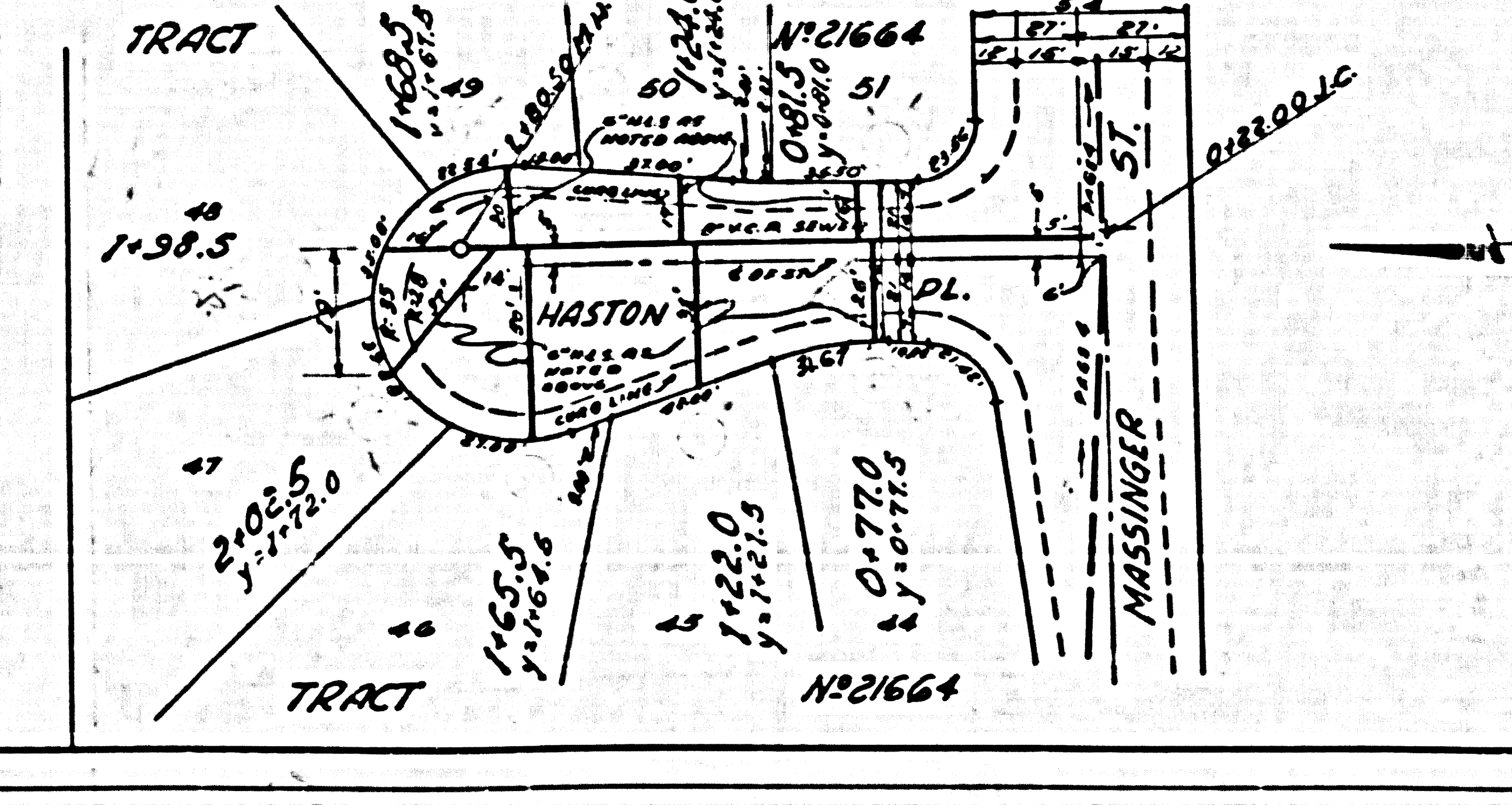
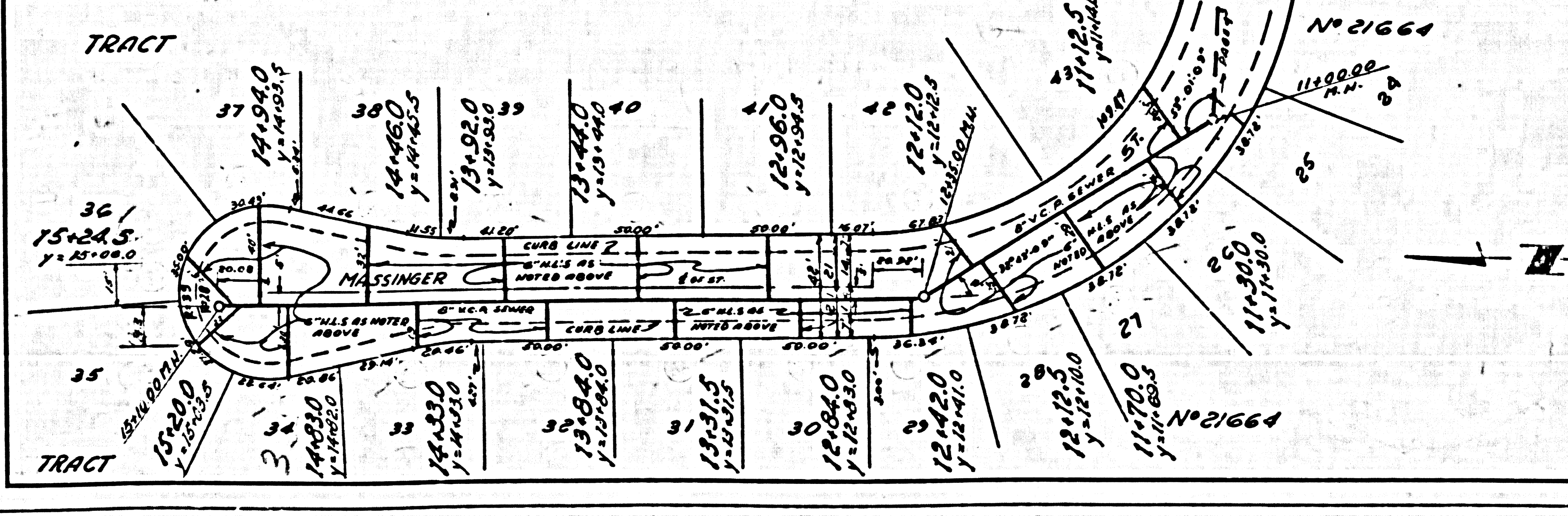
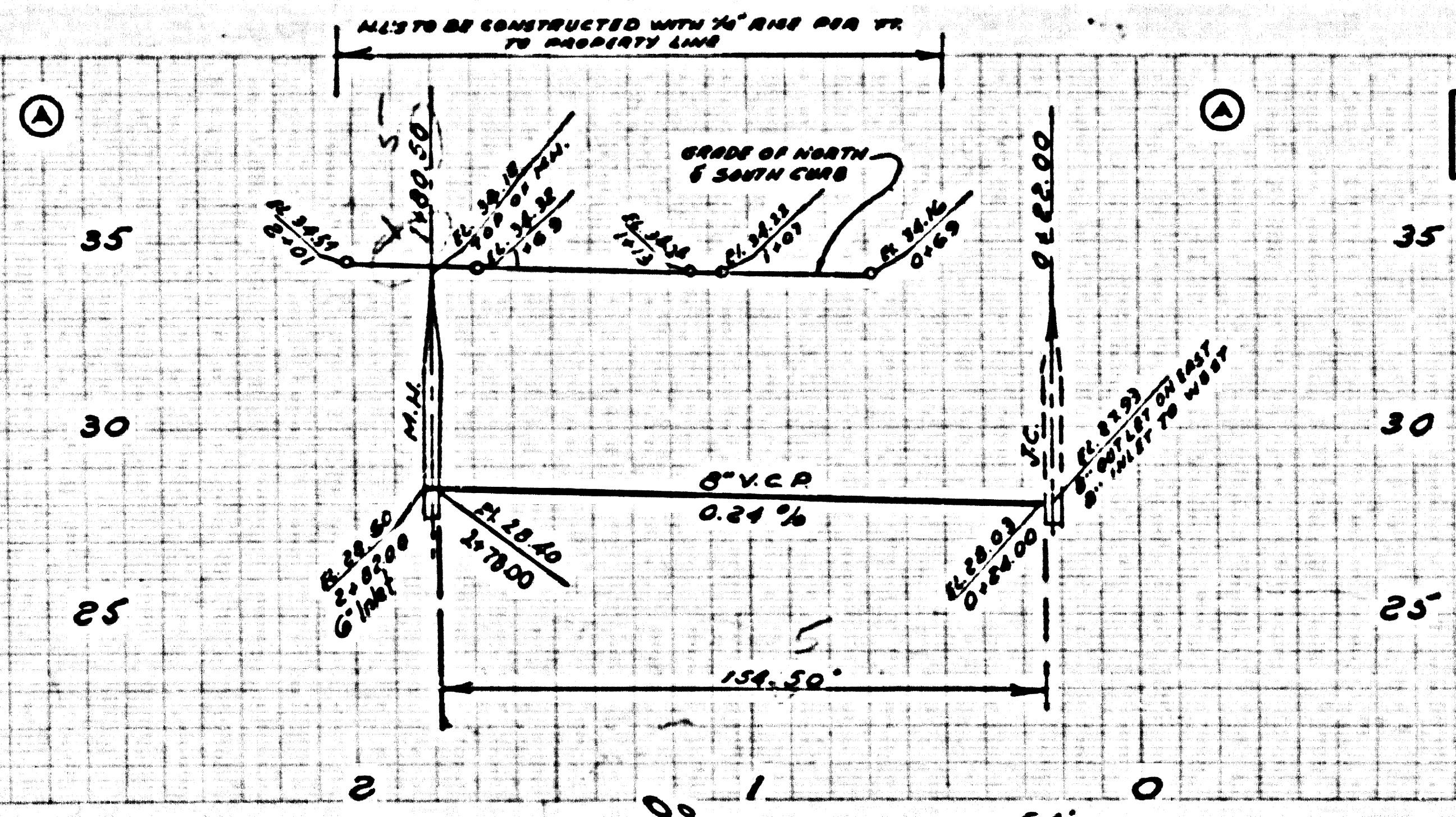
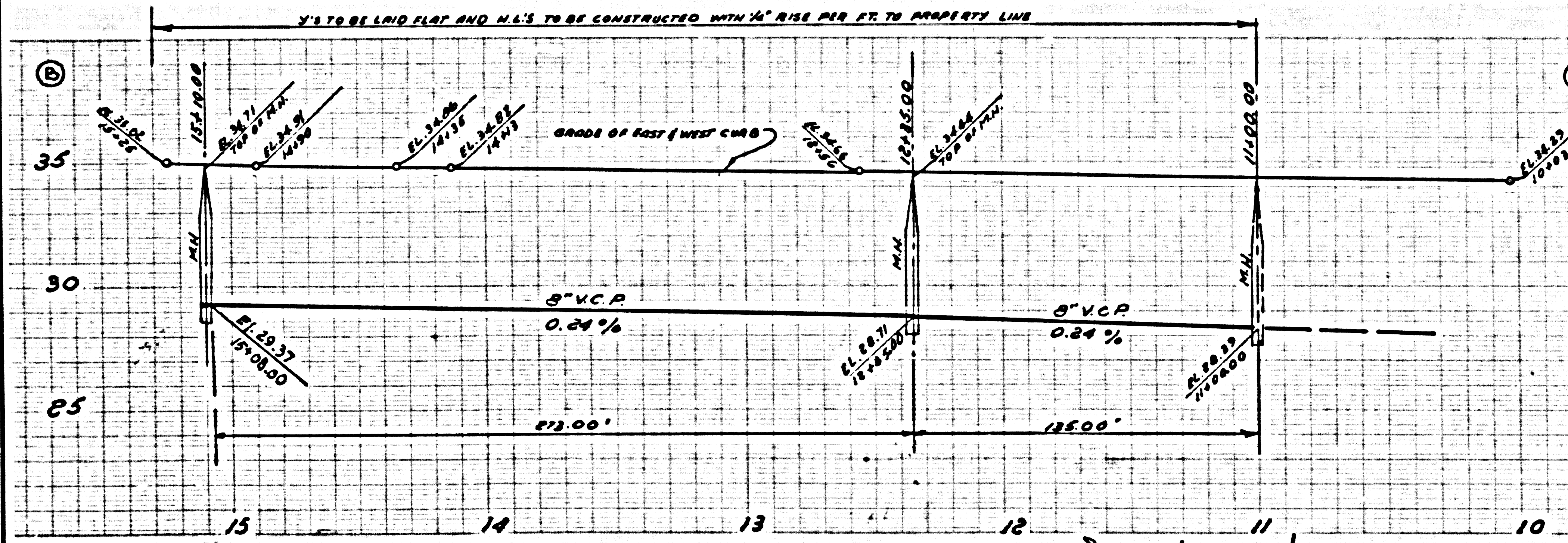
NO CHARGE FOR CONNECTIONS

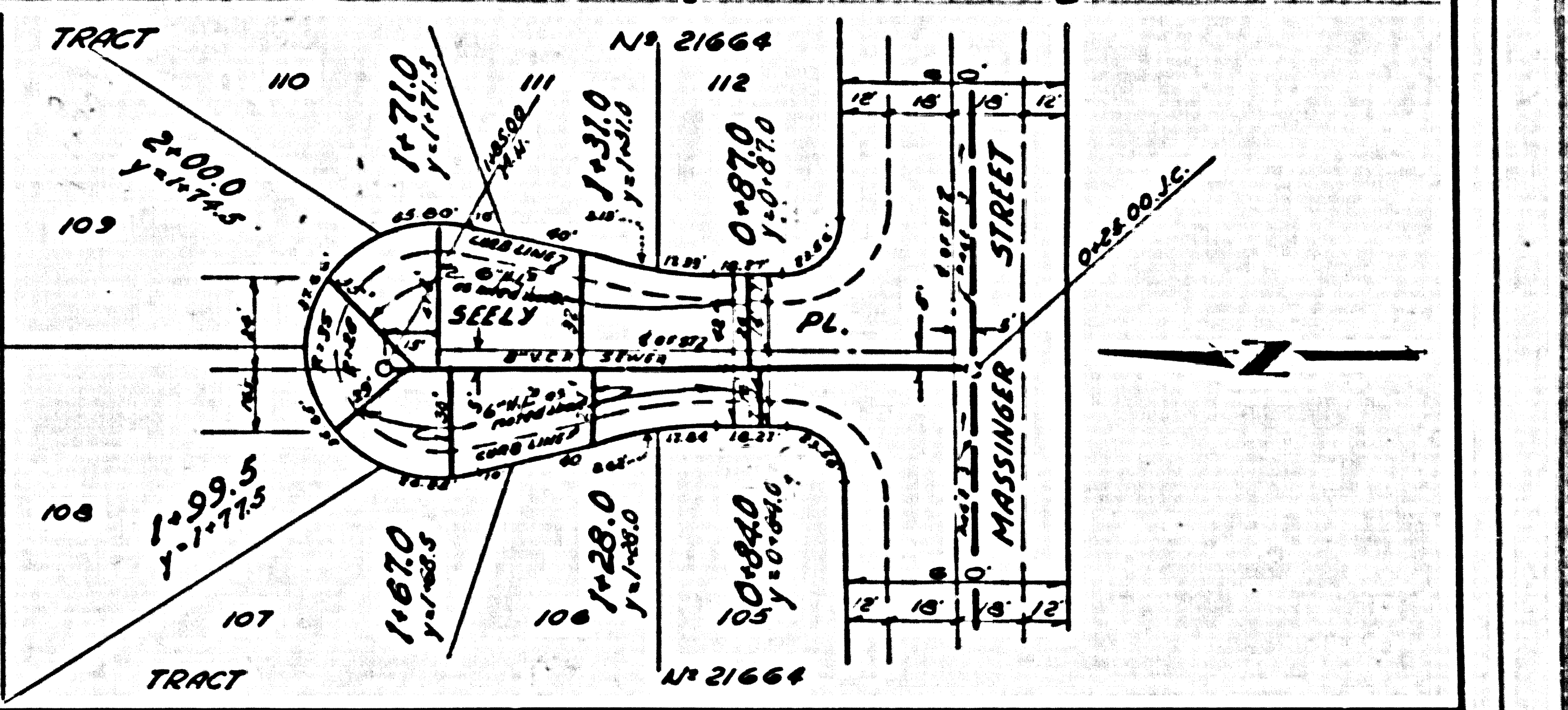
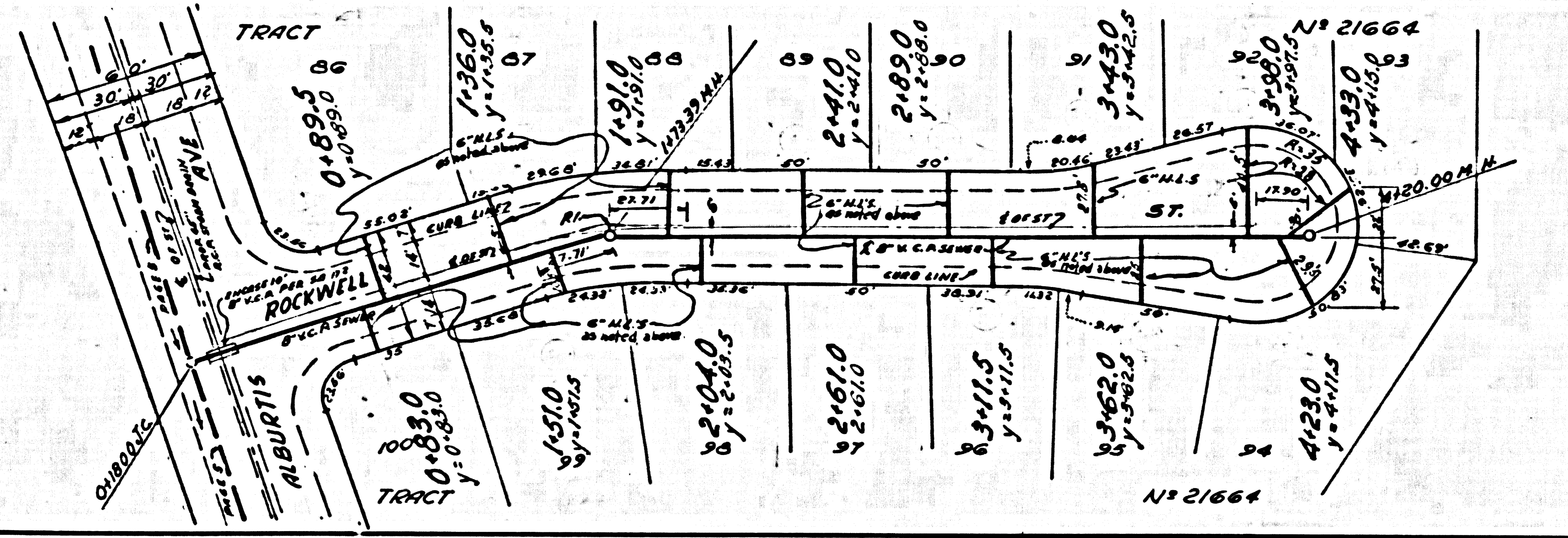
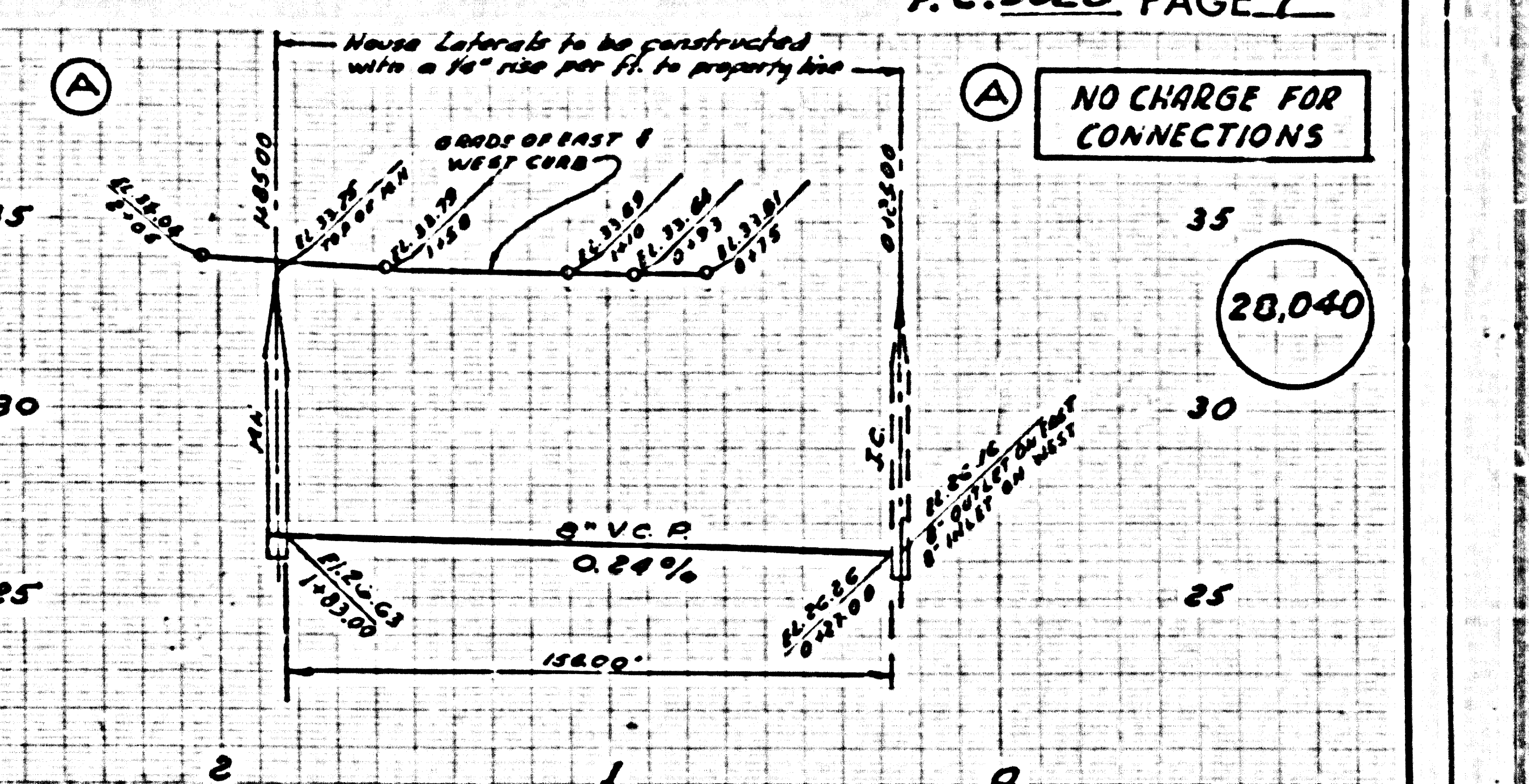
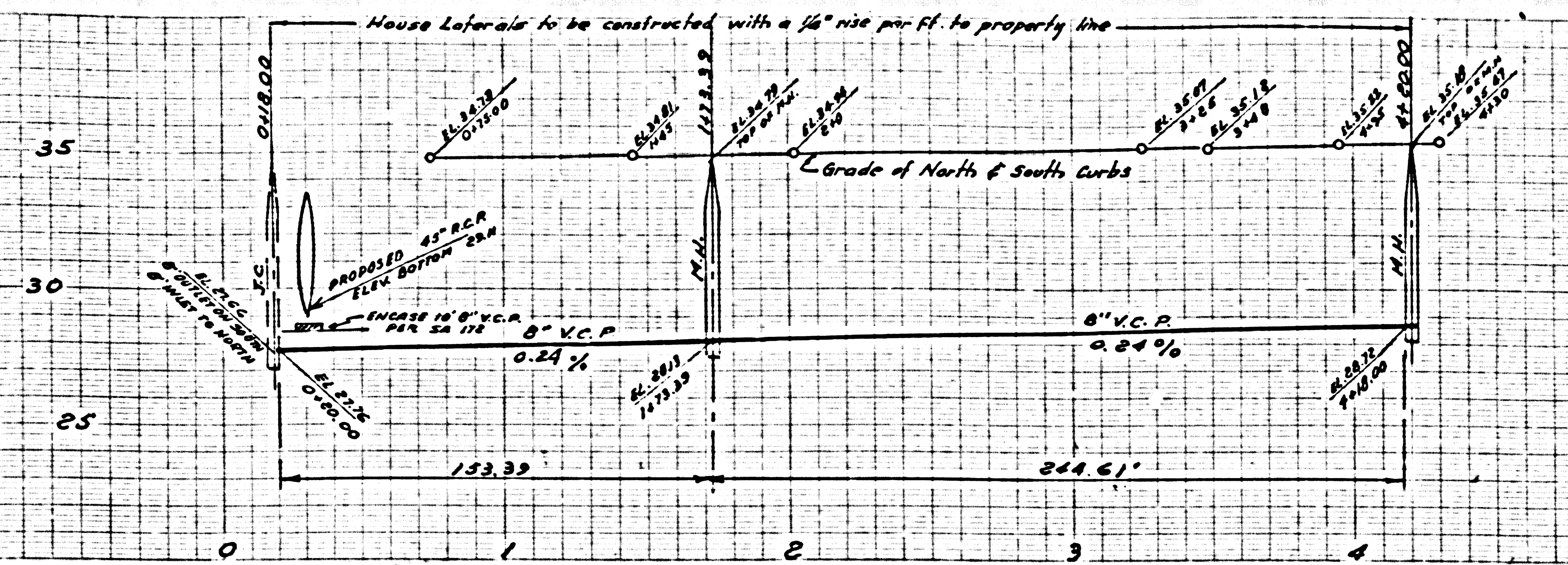
28,039



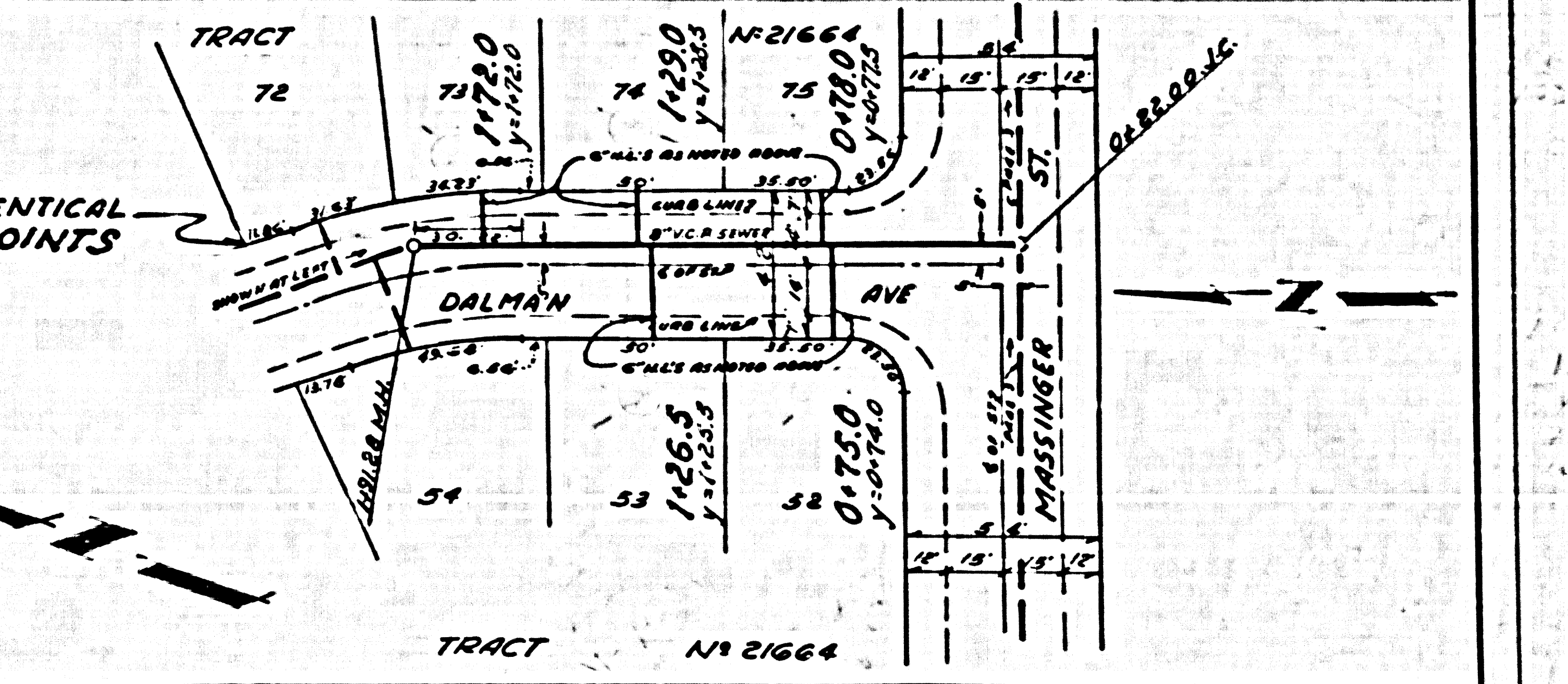
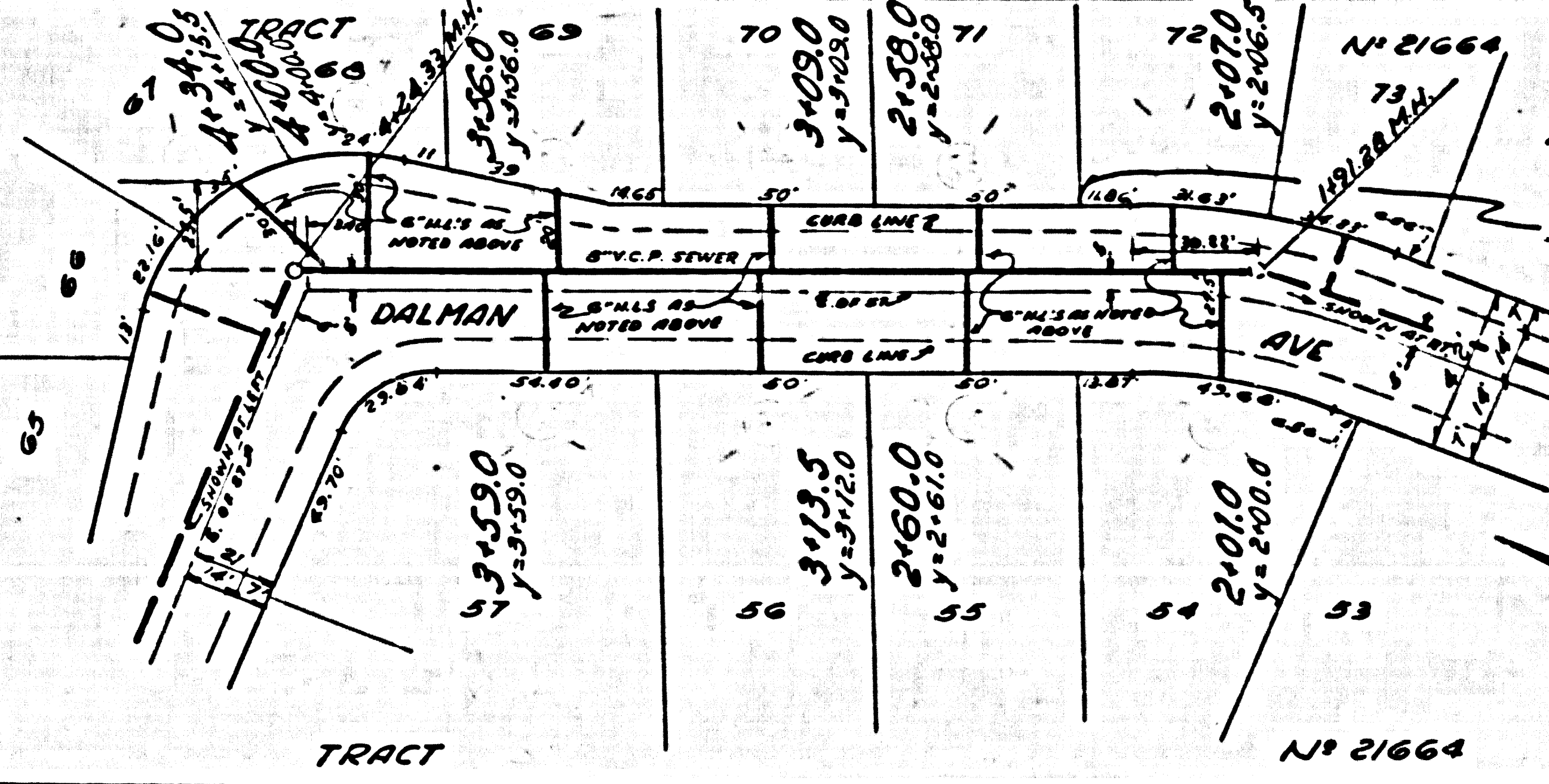
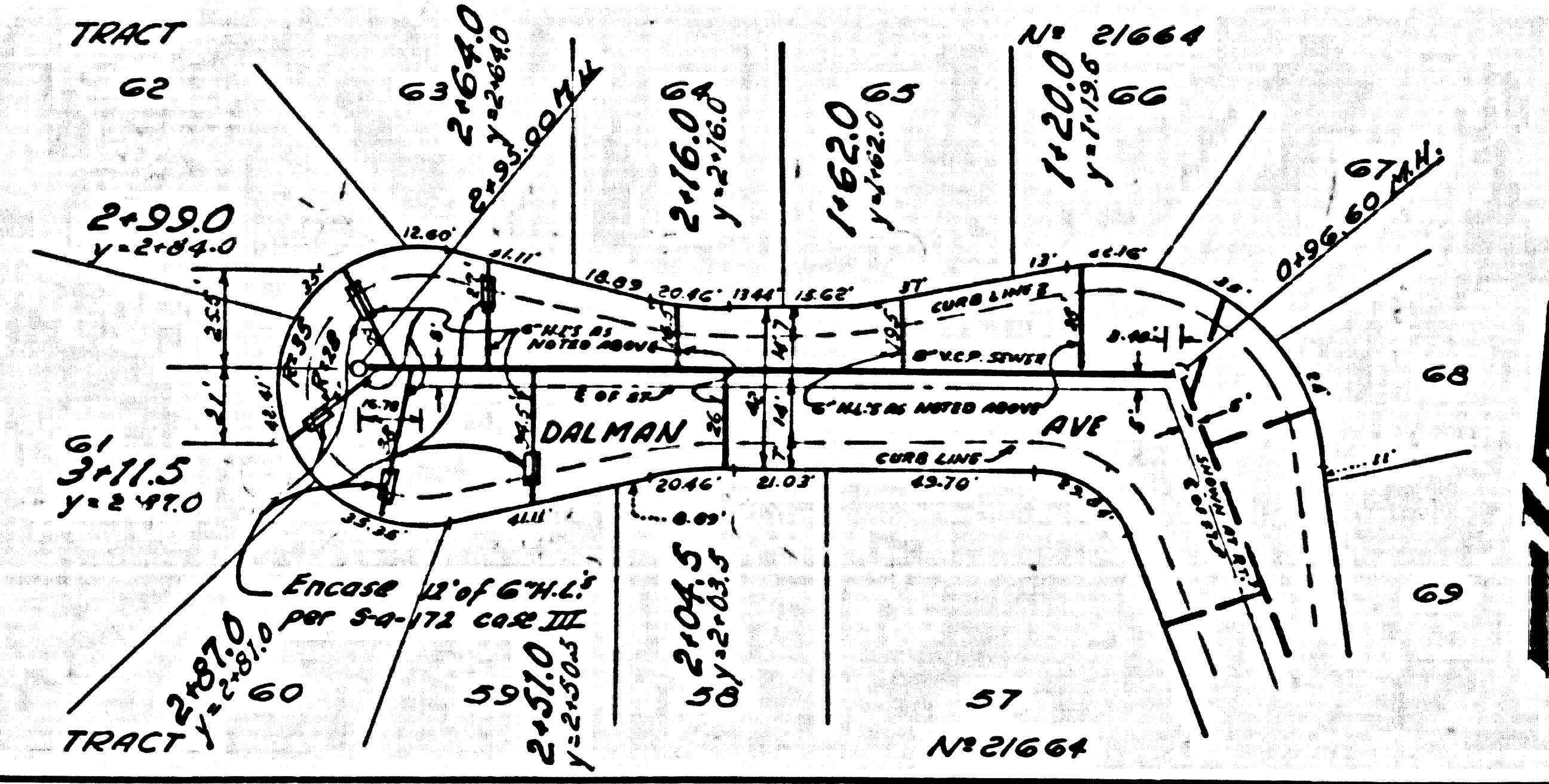
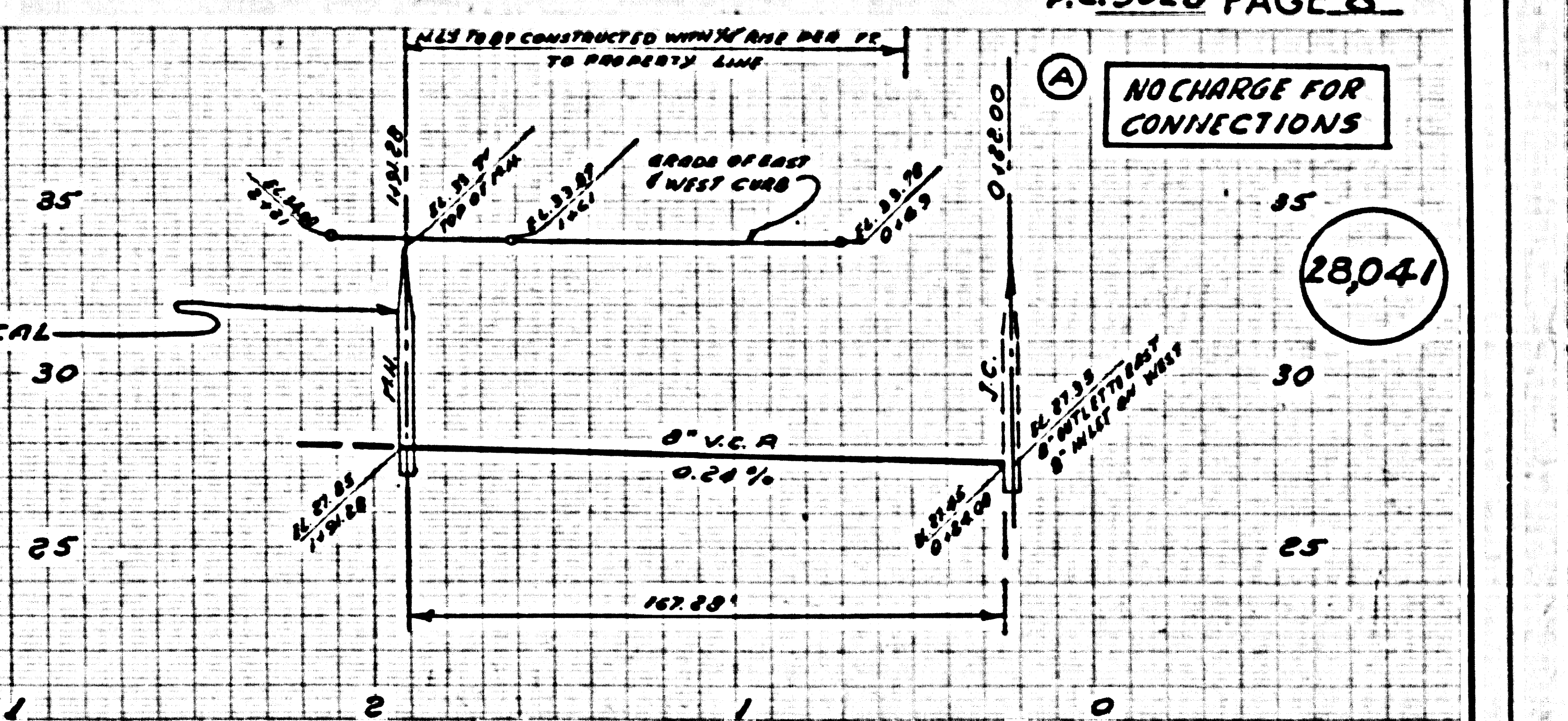
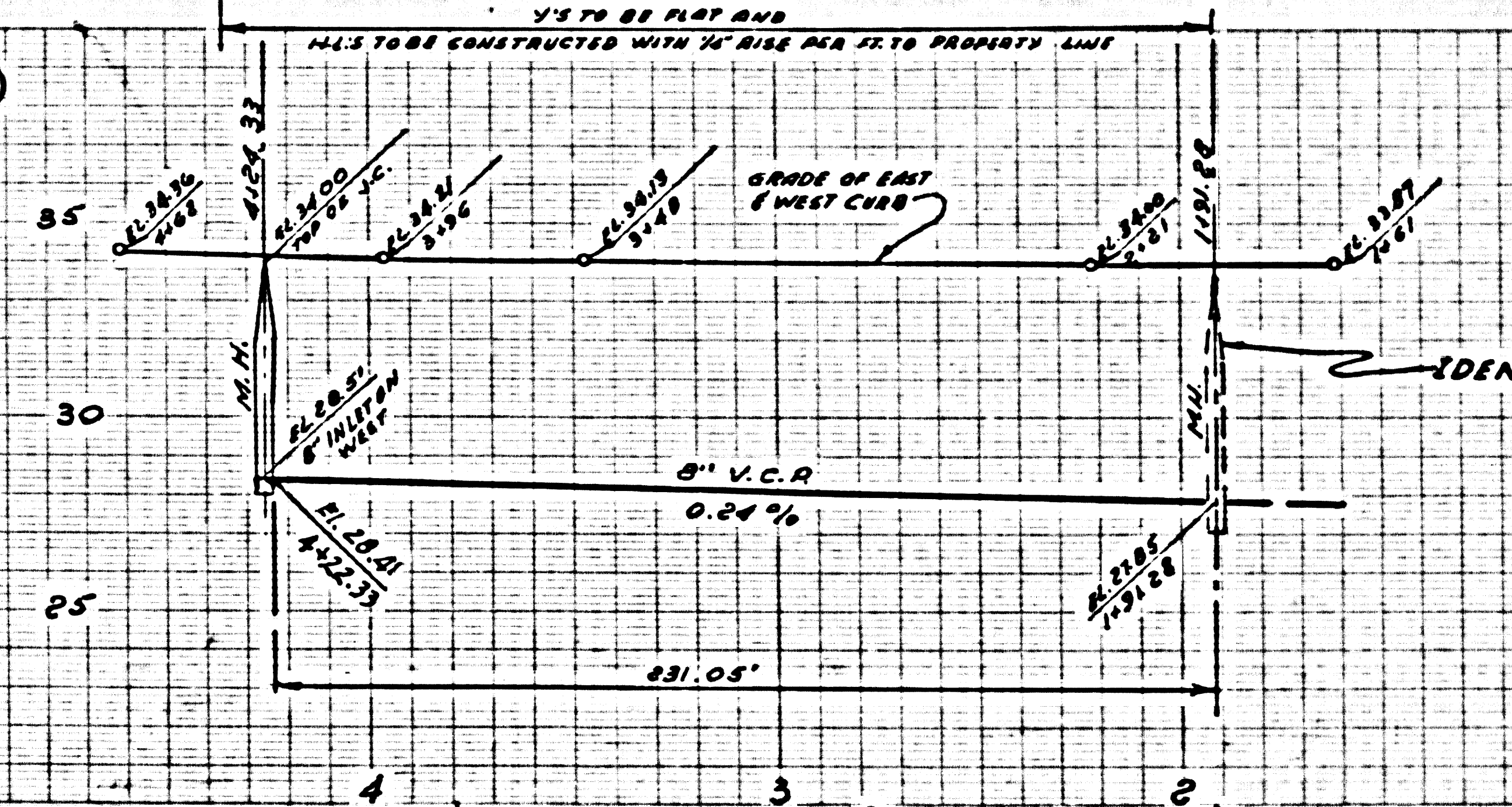
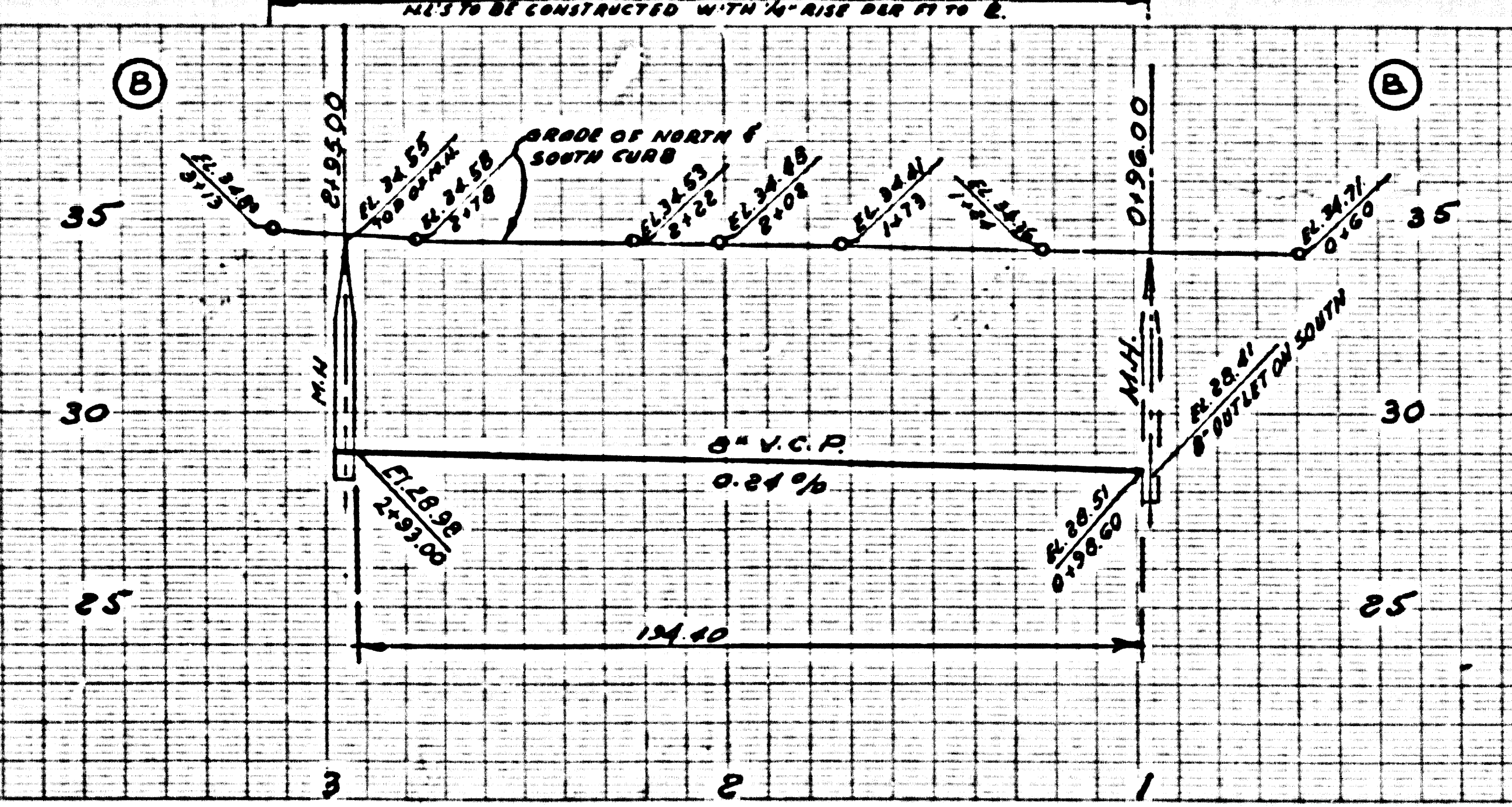
NO CHARGE FOR CONNECTIONS

28,039





RL 1-14-59



RL 1-14-59