

# BELFLOWER BLDG. DIST. NO. 4

PROFILE ALIGNMENT AND GRADE OF **P.C. 5029**  
**SANITARY SEWERS PAGE 1**  
 TO BE CONSTRUCTED IN **J.N. 0350.05**  
**TRACT No 24586**

**PRIVATE CONTRACT NO. 5029**

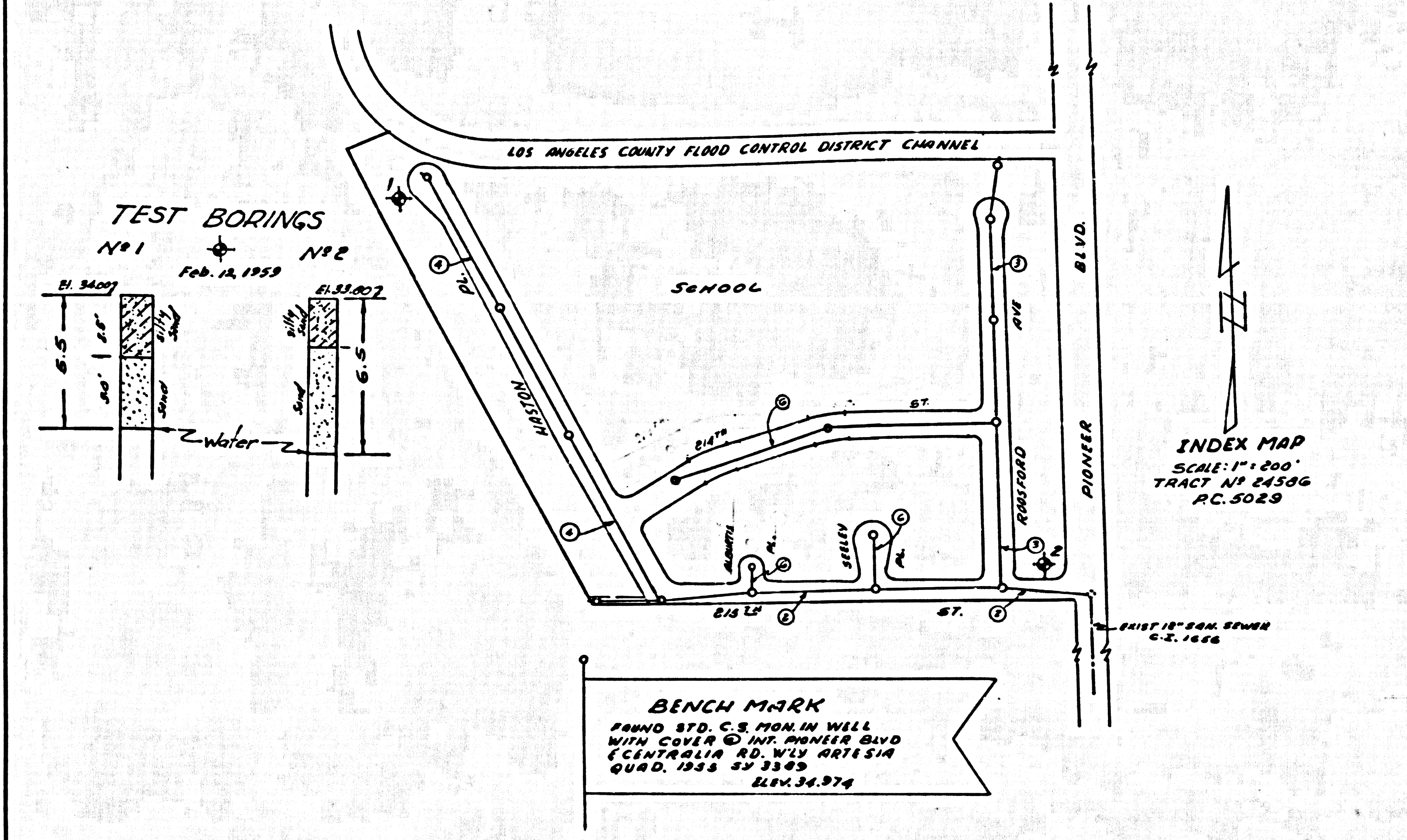
W.S. 31  
 3 SHEETS; 6 PAGES

SCALE: VERT. 1" = 4' HORIZ. 1" = 10' JAN 1959

27,997

PREPARED IN THE OFFICES OF  
**VOORHEES - TRINDLE - NELSON**  
 328 WEST WASHINGTON STREET  
 WESTMINSTER, CALIFORNIA  
 BY: *[Signature]*  
 REG. C. E. NO. 2707

FOR LEGEND SEE PLAN NO. S-A-64



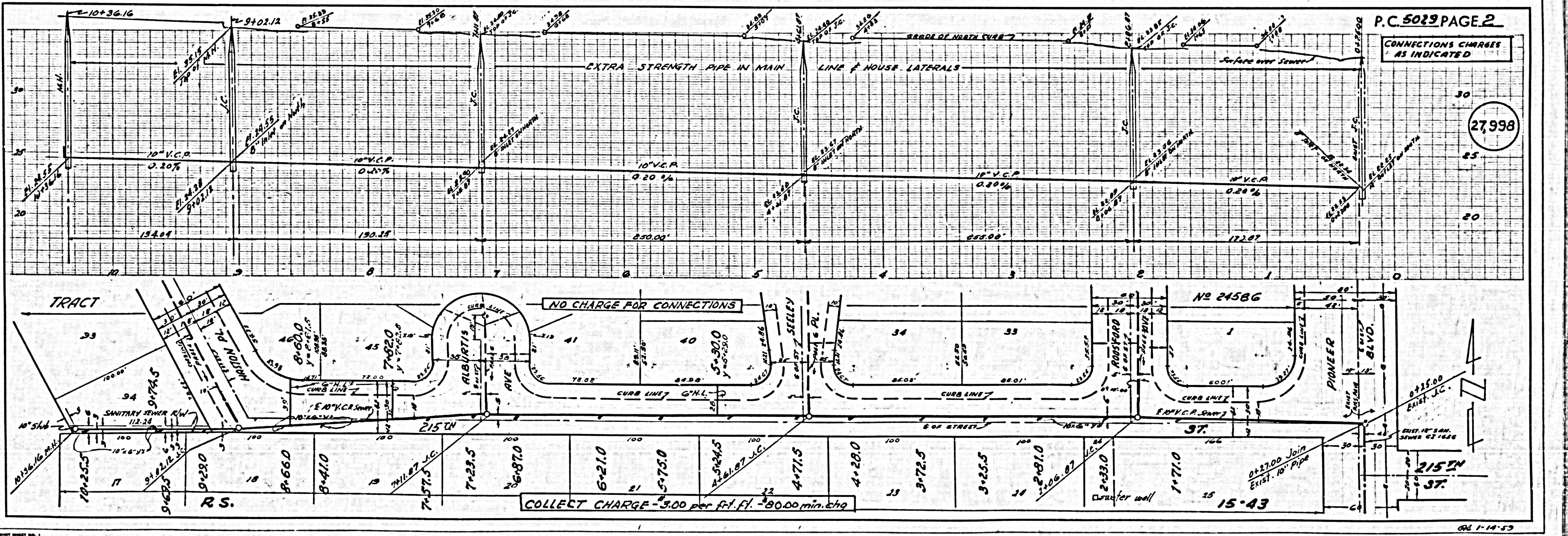
- NOTES**
- PROVIDE STAKES ON THE PROPERTY LINE OR PROPERTY LINES PRODUCED AT RIGHT ANGLES TO THE SEWER LINE AT THE CENTER LINE OF EACH MANHOLE.
  - NO REPRESENTATIVE OF THE COUNTY ENGINEER WILL SURVEY OR LAY OUT ANY PORTION OF THE WORK.
  - THE OWNER OR HIS AUTHORIZED REPRESENTATIVE SHALL FURNISH THE COUNTY ENGINEER WITH GRADE SHEETS AND STATIONING FOR ALL HOUSE LATERALS AND 4" BRANCHES AND SHALL PROVIDE STAKES FOR THESE AT THEIR PROPER LOCATIONS WITH STATIONING PLAINLY MARKED. ANY CHANGE IN LOCATION SHALL BE REQUESTED IN WRITING BY THE OWNER OR HIS REPRESENTATIVE.
  - THE PRIVATE ENGINEER SHALL FURNISH THE HOUSE LATERAL DEPTH AT THE PROPERTY LINE BELOW THE TOP OF CURB ELEVATION FOR EACH HOUSE LATERAL ON THE GRADE SHEET.
  - NO REVISIONS SHALL BE MADE IN THESE PLANS WITHOUT THE APPROVAL OF THE COUNTY ENGINEER.
  - USE STANDARD MANHOLE FRAMES AND COVERS, 8-1/2" L.C.P. AS NOTED.
  - USE STANDARD STRENGTH PIPE EXCEPT AS NOTED.
  - USE 4" DIA. CONCRETE PIPE UNLESS OTHERWISE SPECIFIED.
  - RETRACT ALL TRENCH WITHIN PAVED AREA TO MEET L.A. COUNTY ROAD DEPT. OR CALIF. STATE HIGHWAY REQUIREMENTS BY ACCORDANCE WITH PERMITS.
  - ENCASE FOUR FEET OF SEWER AT POINTS OF INTERFERENCE WITH POLES, CASE III, 8-172.
  - HOUSE LATERALS TO BE CONSTRUCTED WITH INVERTS AT PROPERTY LINE 1/2" BELOW CURB GRADE EXCEPT AS NOTED.
  - ALL STRUCTURES SHALL BE BRICK SEWER STRUCTURES, 8-104, EXCEPT AS NOTED.
  - FOR ALLOWABLE LEAKAGE TEST USE FORMULA NO. 2, S.P.C.'S. SEC. 64.
  - MANHOLE TOPS IN UNIMPROVED RIGHTS OF WAY TO BE SIX INCHES ABOVE FINISHED GRADE.
  - THE CONTRACTOR SHALL NOTIFY THE CONSTRUCTION & STORM DRAIN DIVISION BY TELEPHONE, MAILBOX 9-470, EXT. 302, AT LEAST TWENTY-FOUR HOURS BEFORE STARTING ANY WORK UNDER THIS CONTRACT.

**CONNECTION CHARGES AS INDICATED**  
*[Signature]* 3-16-59

**REVISION**  
 REALIGN SEWER IN 2160 ST BETWEEN STATION 815 TO STATION 7+27  
 CUTBACK SEWER IN ALBERTIS ST. FROM STATION 136 TO 0+85  
 checked by *[Signature]* 4/21/59  
 Office of County Engr. Reg. C.E. No. 6632

**NOTE**  
 GRADES TO WHICH THE IMPROVEMENT IS TO BE CONSTRUCTED ARE SHOWN ON PLANS AND PROFILES. GRADE POINTS FOR TOP OF CURB, CENTER LINE OF STREET, OR CENTERLINE OF ALLEYS ARE SHOWN BY CIRCLES ON PROFILES AT ALL POINTS BETWEEN DESIGNATED POINTS. THE GRADE SHALL BE ESTABLISHED SO AS TO CONFORM TO A STRAIGHT LINE BETWEEN SAID DESIGNATED POINTS.  
 ELEVATIONS ARE IN FEET ABOVE U.S.C. & G.S. 2243 LEVEL DATUM OF 1929.  
 THIS DRAWING AND THE DATA HEREON ARE HEREBY MADE A PART OF THE SPECIFICATIONS.  
 WORK SHALL BE CONSTRUCTED ACCORDING TO SPECIFICATIONS ON FILE IN THE OFFICE OF THE COUNTY ENGINEER AND SHALL BE PROSECUTED ONLY IN THE PRESENCE OF THE COUNTY ENGINEER.  
 WORK SHOULD NOT BE STARTED UNTIL THE CONTRACTOR HAS OBTAINED A PERMIT TO OCCUPY OR SECURE AN OCCUPANCY PERMIT FROM THE L.A. COUNTY ROAD DEPT. DISTRICT OFFICE NO. 1 AND MAKE A DEPOSIT WITH THE COUNTY ENGINEER, ROOM 324 FARM ARCADE BUILDING, 222 1/2 BROADWAY SUFFICIENT TO COVER THE COST OF CONSTRUCTION INSPECTION AND RECORD PLANS.  
 APPROVAL OF THIS PLAN BY THE COUNTY OF LOS ANGELES DOES NOT CONSTITUTE A REPRESENTATION AS TO THE ACCURACY OF THE LOCATION OF OR THE EXISTENCE OR NON-EXISTENCE OF ANY UNDERGROUND UTILITY PIPE, OR STRUCTURE WITHIN THE LIMITS OF THIS PROJECT. THE WORKER ASSUMES ALL RISK.  
 IF WORK IS TO BE DONE IN A STATE HIGHWAY, A PERMIT MUST BE OBTAINED FROM THE STATE OF CALIFORNIA, DIVISION OF HIGHWAYS, 120 SOUTH BRIDGE STREET.

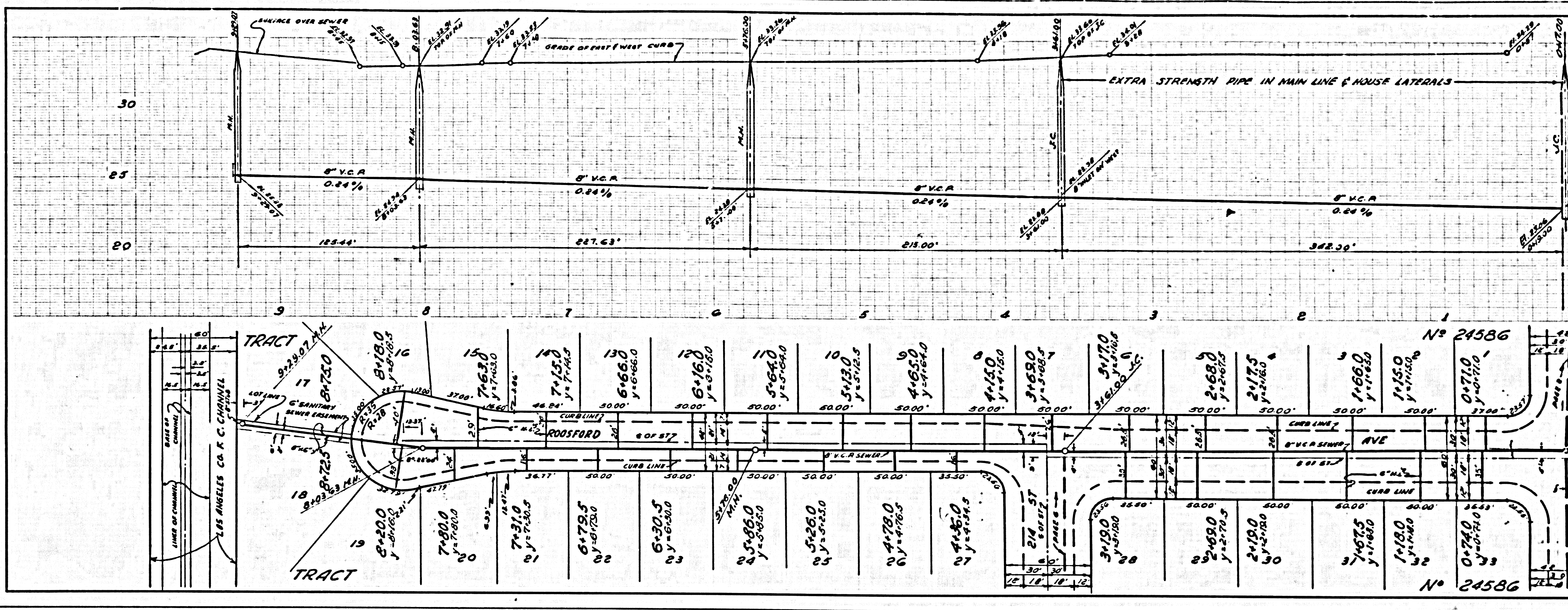
**COUNTY OF LOS ANGELES, CALIFORNIA**  
 APPROVED, JOHN A. LAMME, COUNTY ENGINEER  
 APPROVED, C.E. COMPANY, CHIEF ENGINEER  
 BY: *[Signature]* BY: *[Signature]*  
 SANTIAGO, CALIF. OFFICE ENGINEER  
 CHECKED BY: *[Signature]*  
 OFFICE OF COUNTY ENGINEER, REG. C. E. NO. 3481





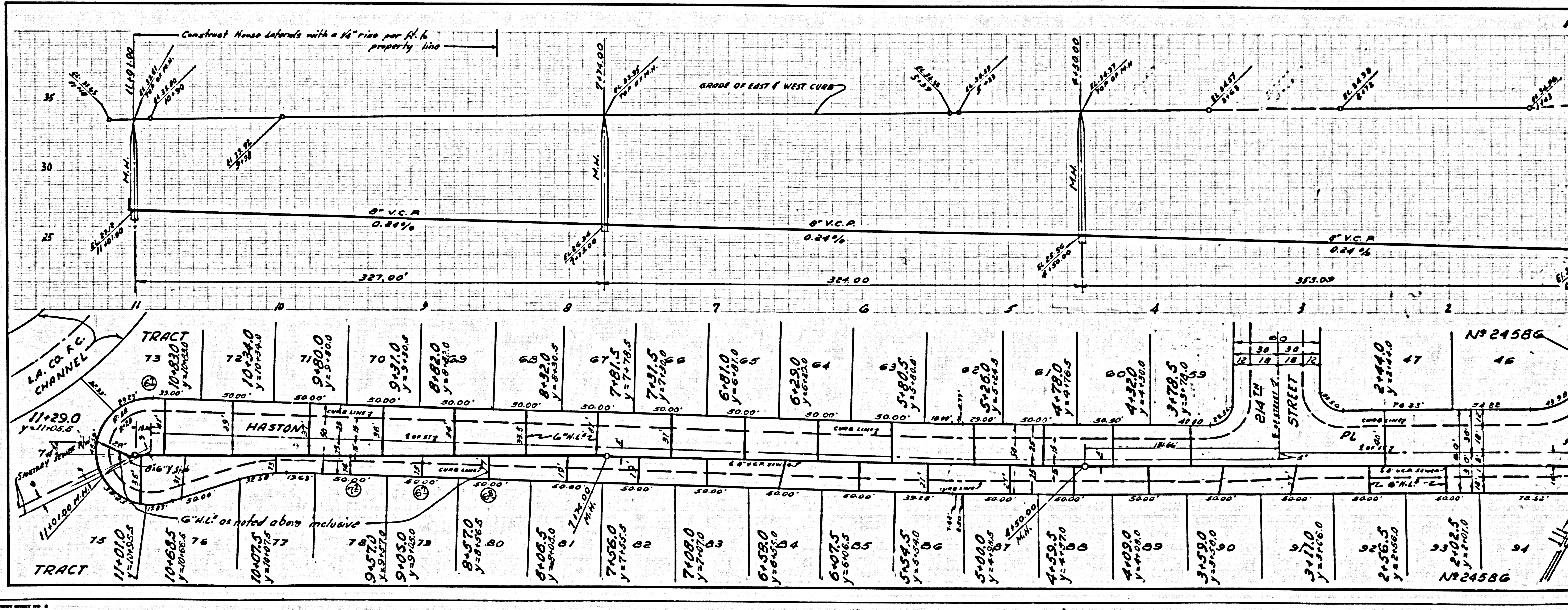
NO CHARGE FOR CONNECTIONS

27,999



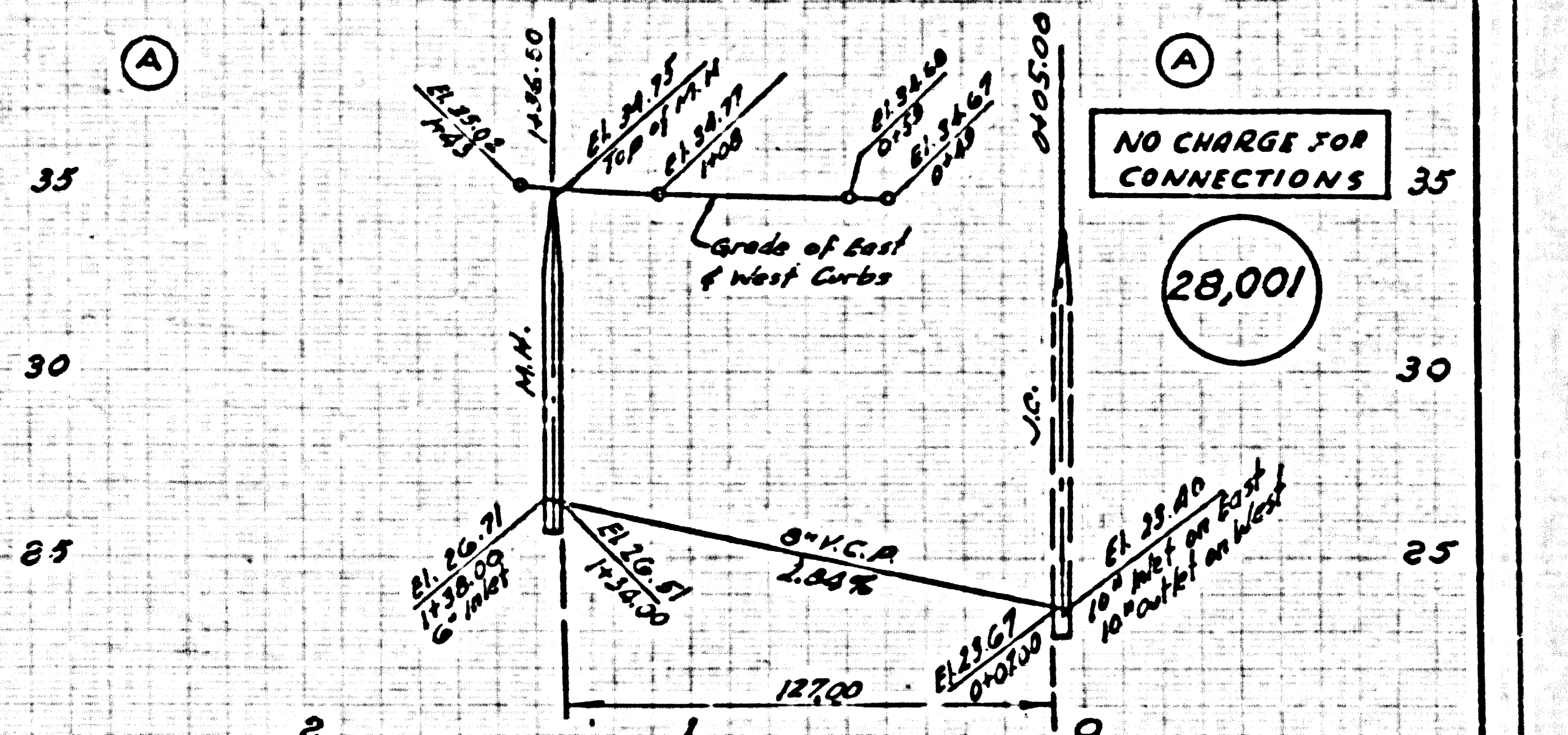
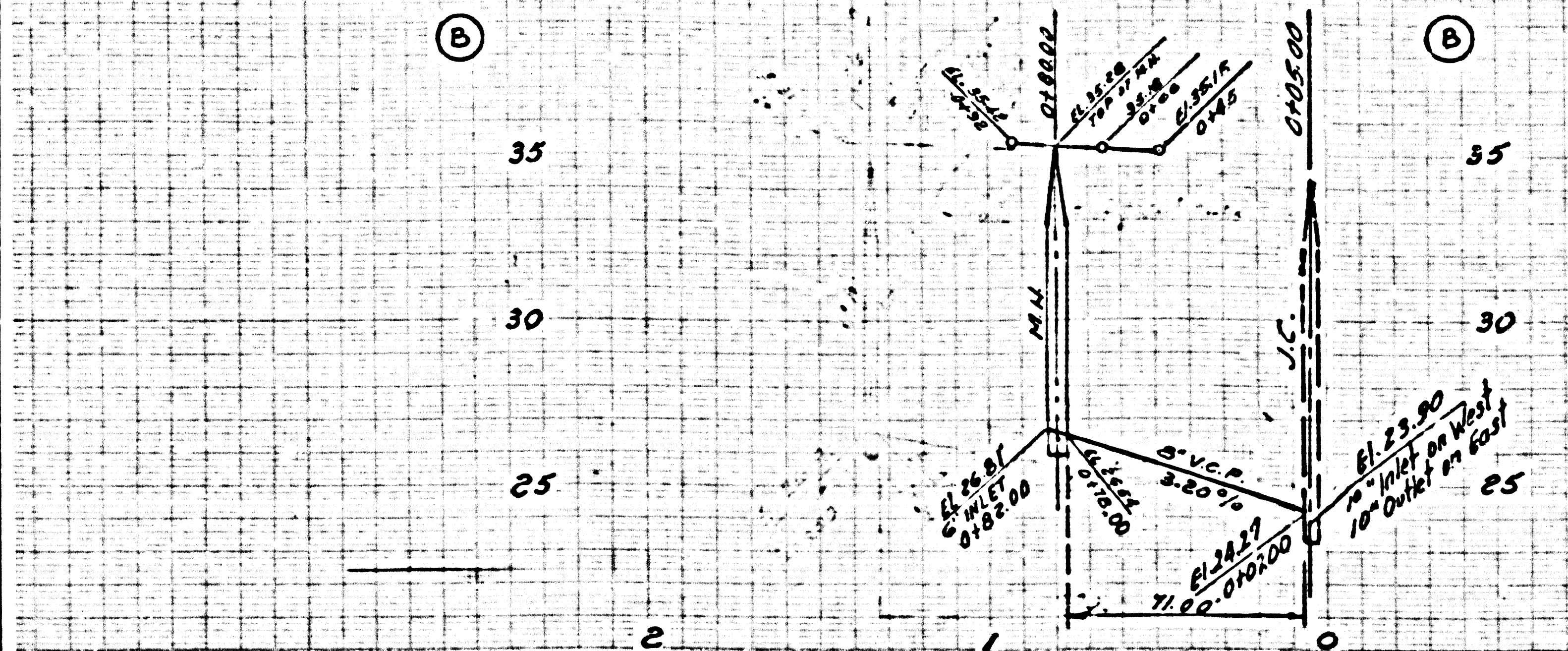
NO CHARGE FOR CONNECTIONS

28,000

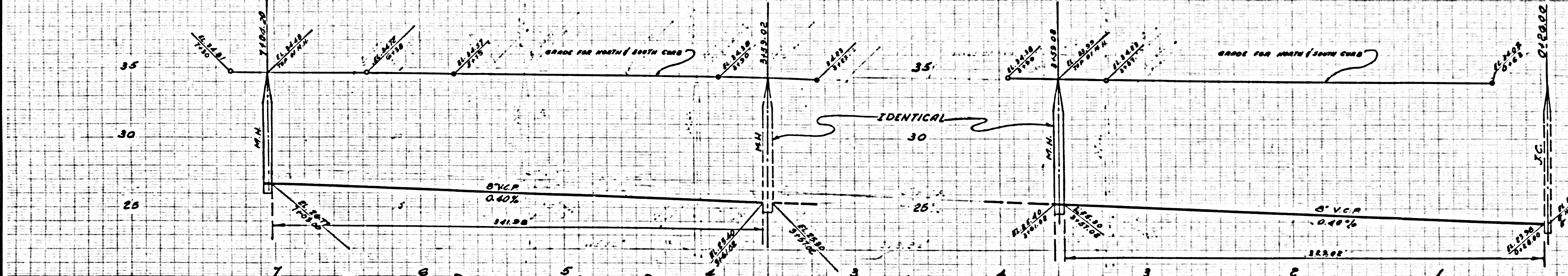
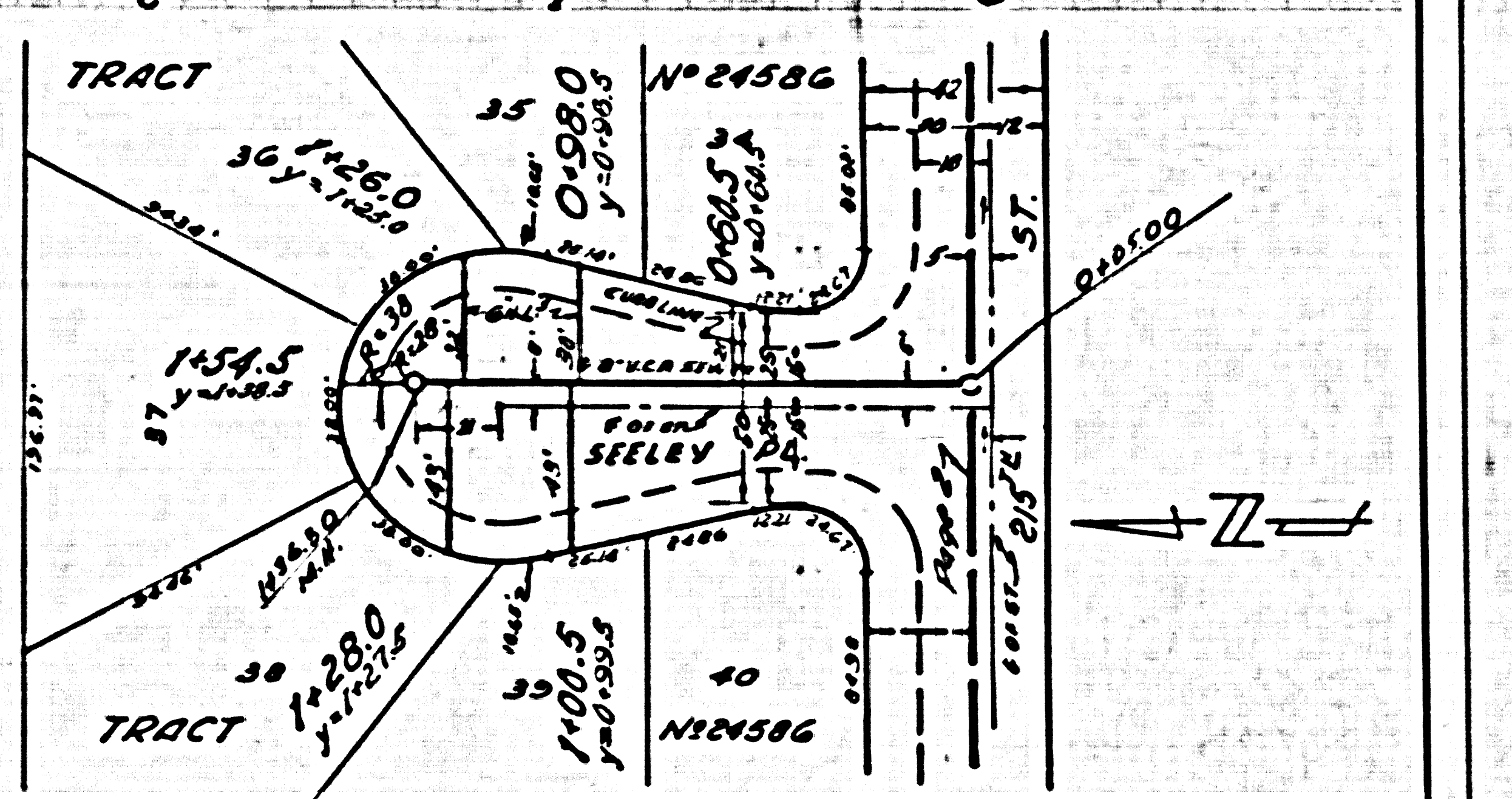
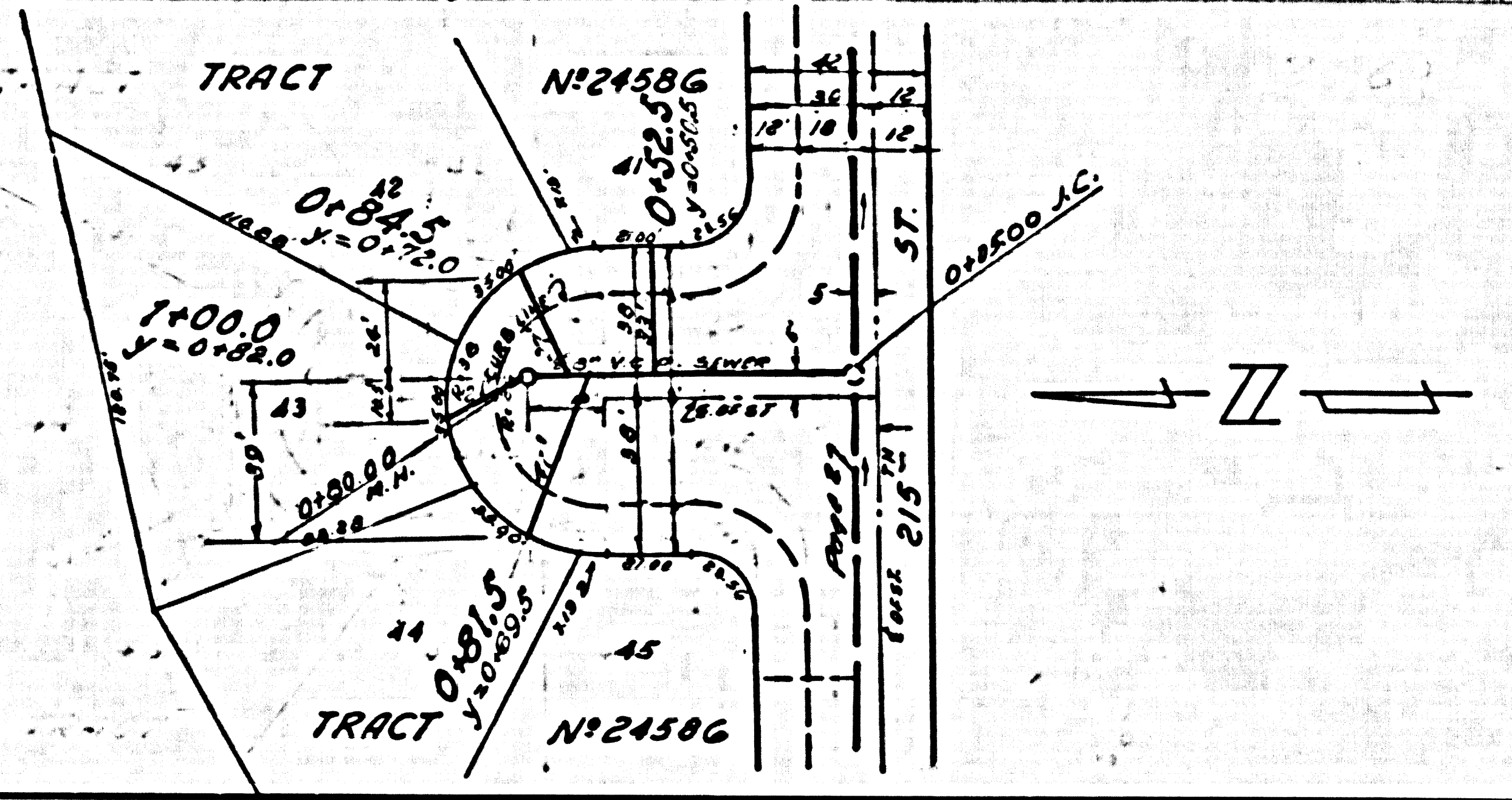


U.S.G.P. 1908 CAL. PLAN. PRINT. DIVISION NO. 2





NO CHARGE FOR CONNECTIONS  
28,001



NO CHARGE FOR CONNECTIONS  
28,002

