

# NORWALK BLDG. DIST. NO. 4.06

J.N. 0870.34  
 PROFILE ALIGNMENT AND GRADE OF  
**P.C. 5031**  
**SANITARY SEWERS PAGE 1**  
 TO BE CONSTRUCTED IN

**TRACT NO. 24706**  
**PRIVATE CONTRACT NO. 5031**

W.S. 53  
 2 SHEETS; 4 PAGES

SCALE: VERT. 1"=6'  
 HORIZ. 1"=40'

DEC. 1958  
 PREPARED IN THE OFFICES OF  
**KEMMERER ENGR. CO. INC.**  
 BY Robert R. Taylor  
 REG. C. E. NO. 11339

27795

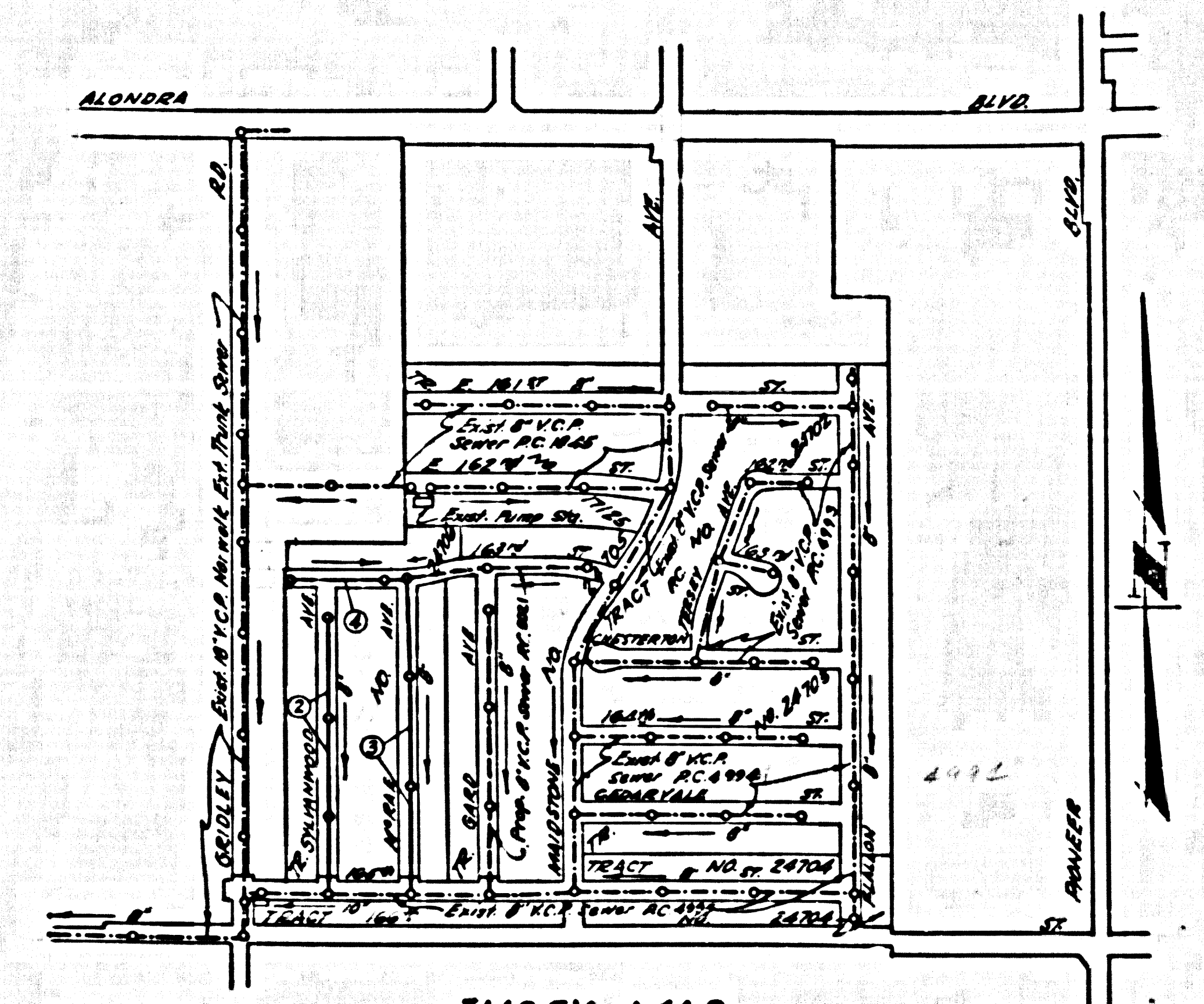
FOR LEGEND SEE PLAN NO. S-A-64

**NOTE:**  
 GRADES TO WHICH THIS IMPROVEMENT IS TO BE CONSTRUCTED ARE SHOWN ON PLANS AND PROFILE. GRADE POINTS FOR TOP OF CURBS, CENTER LINE OF STREETS, OR CENTER LINE OF ALLEYS ARE SHOWN BY CIRCLET ON PROFILE. AT ALL POINTS BETWEEN INDICATED POINTS THE GRADE SHALL BE ESTABLISHED SO AS TO CONFORM TO A STRAIGHT LINE DRAWN BETWEEN SAID INDICATED POINTS.  
 DEVIATIONS ARE IN FEET ABOVE OR BELOW GRADE LEVEL SHOWN ON PLAN.  
 THESE DRAWINGS AND THE DATA HEREON ARE HEREBY MADE A PART OF THE SPECIFICATIONS.  
 WORK SHALL BE CONSTRUCTED ACCORDING TO SPECIFICATIONS ON FILE IN THE OFFICE OF THE CITY ENGINEER AND SHALL BE PROTECTED ONLY IN THE PRESENCE OF THE CITY ENGINEER.  
 BEFORE WORK CAN BE STARTED, THE CONTRACTOR MUST OBTAIN A PERMIT TO EXCAVATE IN CITY STREETS FROM THE CITY ENGINEER AND SHALL BE RESPONSIBLE FOR THE COST OF CONSTRUCTION INSPECTION AND RECORD PLANS.  
 APPROVAL OF THESE PLANS BY THE CITY ENGINEER DOES NOT CONSTITUTE A REPRESENTATION AS TO THE ACCURACY OF THE LOCATION OF OR THE EXISTENCE OR NON-EXISTENCE OF ANY UNDERGROUND UTILITY PIPE, OR STRUCTURE WITHIN THE LIMITS OF THE PROJECT. THE CONTRACTOR SHALL BE RESPONSIBLE FOR THE LOCATION OF ALL UTILITIES.  
 IF WORK IS TO BE DONE IN A STATE HIGHWAY, A PERMIT MUST BE OBTAINED FROM THE STATE OF CALIFORNIA, DIVISION OF HIGHWAYS, 128 SOUTH SPRING STREET.

CITY OF NORWALK, CALIFORNIA

APPROVED, JOHN A. LAMBE, CITY ENGINEER  
 APPROVED, C.E. COMPTON, CHIEF ENGINEER  
 CO. SEAL NO. 1  
 BY Robert R. Taylor SANITATION ENGINEER  
 CHECKED BY SIC Quinn 2-27-59 OFFICE ENGINEER  
 OFFICE OF CITY ENGINEER, REG. C. E. NO. 3446

SUBMITTED BY: Robert R. Taylor 2-5-59  
 AS CONSULTING REGIONAL ENGINEER, R.C.E. NO. 2871

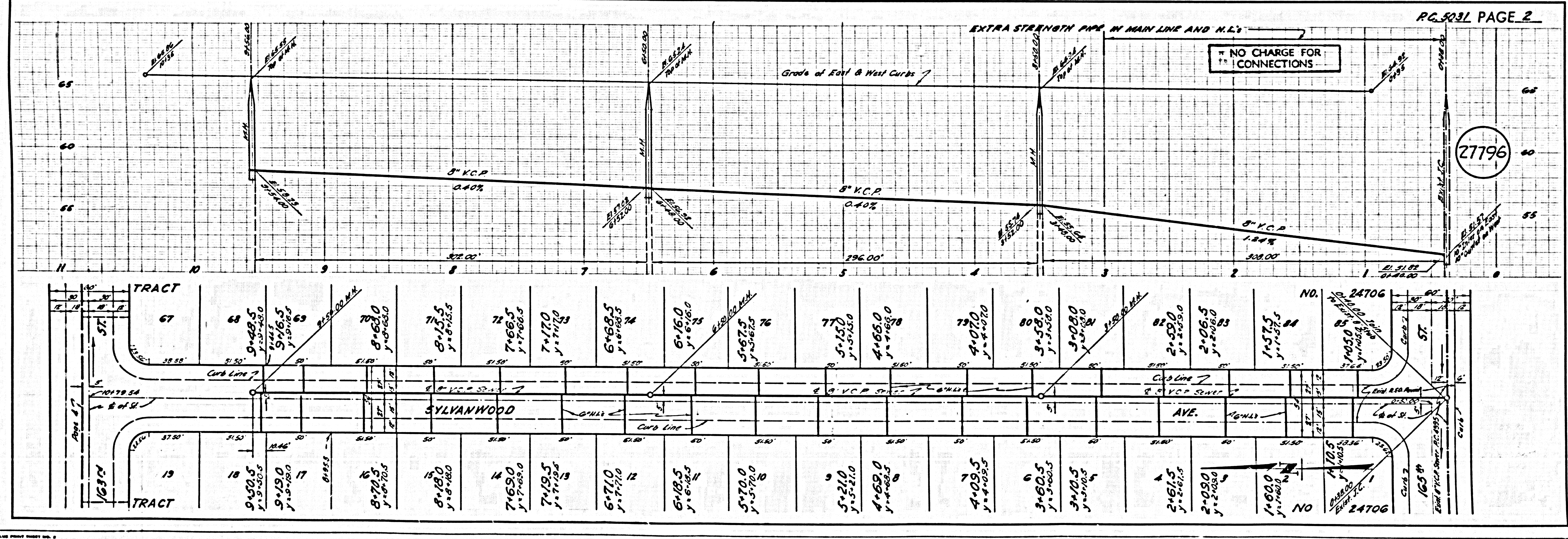


INDEX MAP  
 TRACT NO. 24706  
 P.C. 5031 Scale: 1"=500'

NO CHARGE FOR CONNECTIONS  
 E. Awards 1-4-59

5M. 5V. 2180 SPIKE 1 LEAD 3 45 E. OF CURB RETURN AT N.E. COR. ALONDRA & MAIDSTONE (ARTERIA QUAD 1535) E.T. 7.675

**NOTE:**  
 THE CONTRACTOR SHALL NOTIFY THE CONSTRUCTION AND STORM DRAIN DIVISION BY TELEPHONE, MADISON 9-4747, EX. 362, AT LEAST 24 HOURS BEFORE STARTING ANY WORK UNDER THIS CONTRACT.

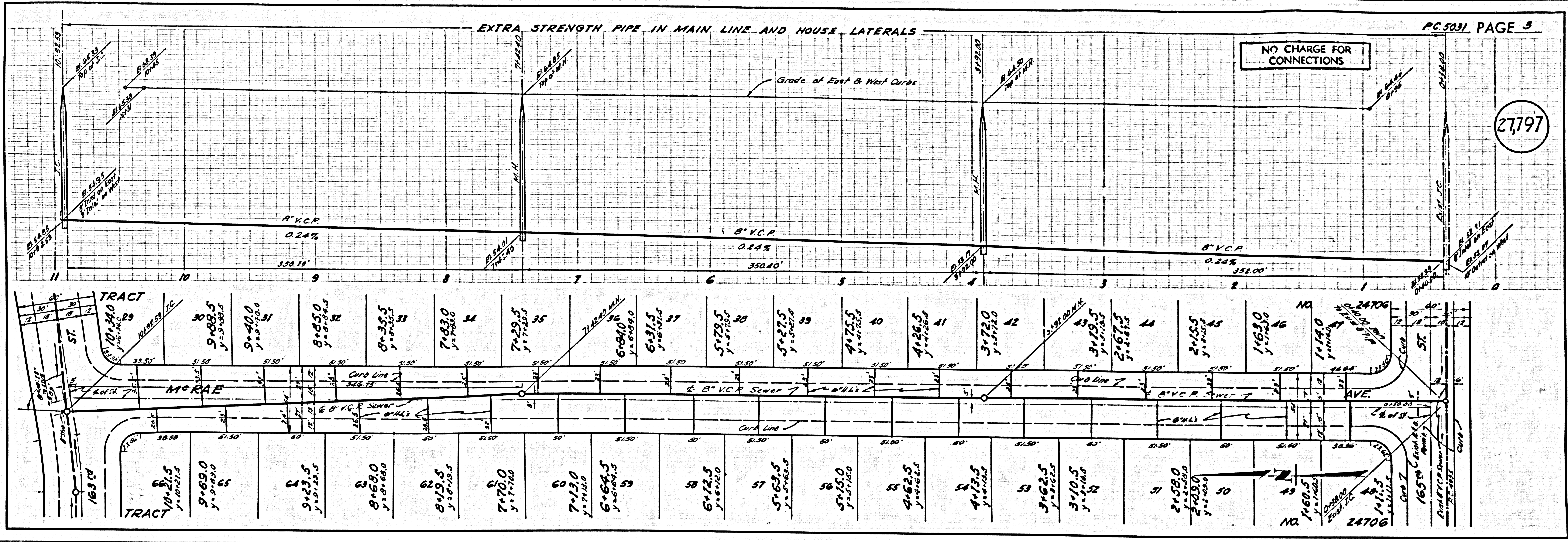


NO CHARGE FOR CONNECTIONS

P.C. 5031 PAGE 2

27796

27797



27798

