

NORWALK BLDG. DIST. NO. 4.2

PROFILE ALIGNMENT AND GRADE OF P.C. 5032  
 SANITARY SEWERS PAGE 1  
 TO BE CONSTRUCTED IN J.N. 035206

TRACT No. 24600

PRIVATE CONTRACT NO. 5032

W.S. 34

2 SHEETS, 4 PAGES

28,213

SCALE: VERT. 1"=4' HOR. 1"=40'

APR. 1959

PREPARED IN THE OFFICES OF

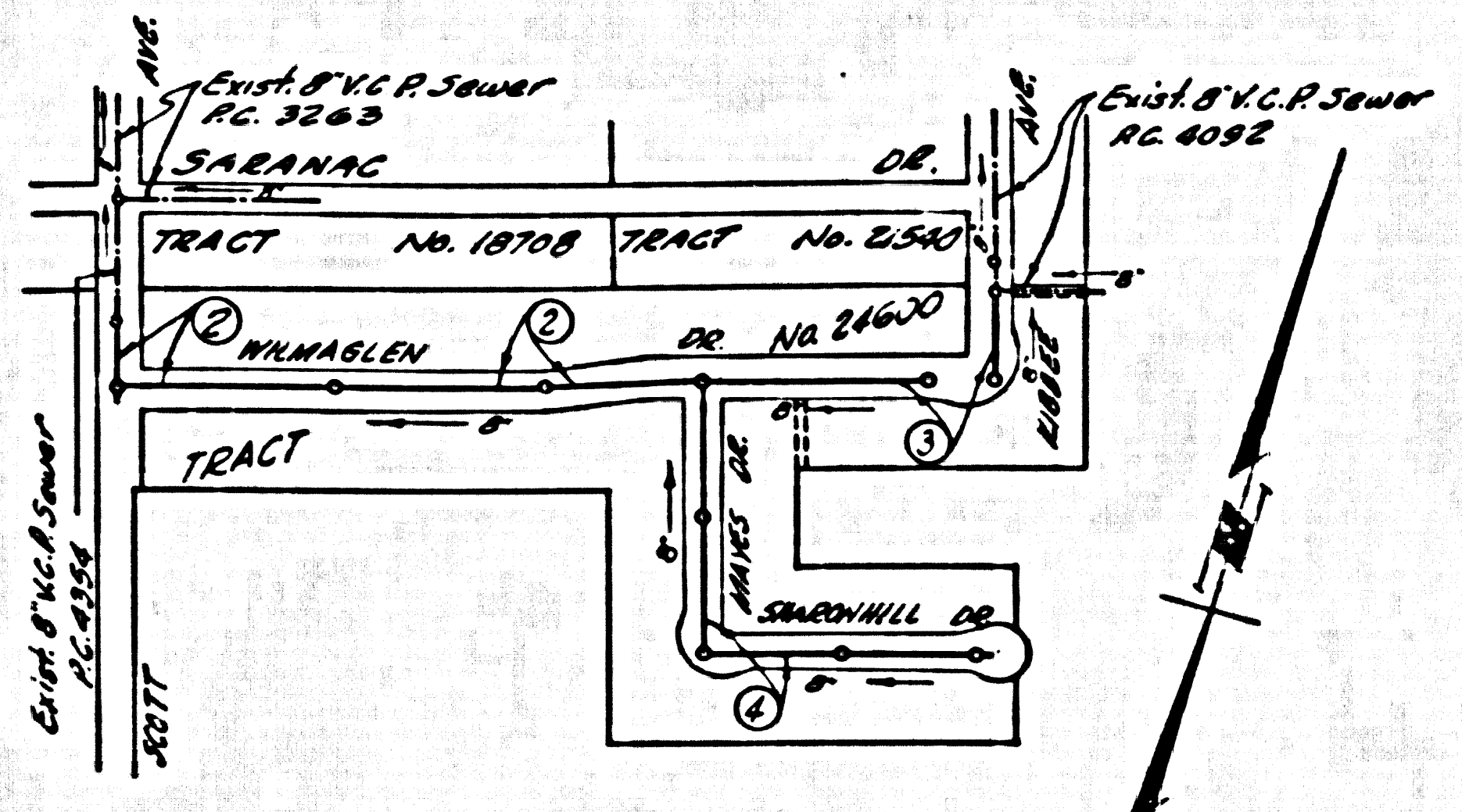
KEMMERER ENGINEERING CO., INC.

By Robert R. Flure

REG. C. E. NO. 11343

FOR LEGEND SEE PLAN NO. S-A-64

- NOTES
- PROVIDE STAKES ON THE PROPERTY LINE OR PROPERTY LINES PRODUCED AT RIGHT ANGLES TO THE SEWER LINE AT THE CENTER LINE OF EACH MANHOLE.
  - NO REPRESENTATIVE OF THE COUNTY ENGINEER WILL SURVEY OR LAYOUT ANY PORTION OF THE WORK.
  - THE OWNER OR HIS AUTHORIZED REPRESENTATIVE SHALL FURNISH THE COUNTY ENGINEER WITH SHADY SHEETS AND STATIONING FOR ALL HOUSE LATERALS AND Y BRANCHES AND SHALL PROVIDE STAKES FOR THEM AT THEIR PROPER LOCATIONS WITH STATIONING PLANNED MARKS. ANY CHANGE IN LOCATION SHALL BE REQUESTED IN WRITING BY THE OWNER OR HIS REPRESENTATIVE.
  - NO REVISIONS SHALL BE MADE IN THESE PLANS WITHOUT THE APPROVAL OF THE COUNTY ENGINEER.
  - USE STANDARD MANHOLE FRAMES AND COVERS, S-A-117, EXCEPT AS NOTED.
  - USE STANDARD STRENGTH PIPE EXCEPT AS NOTED.
  - USE CEMENT MORTAR FOR JOINTS; OR 3" JUMBO - 5.00" FOR ALL VITRIFIED CLAY PIPE JOINTS, PER S.A.C. 36.4.4.
  - RESURFACE ALL PAVEMENT WITHIN PAYEE AREA TO MEET L.A. COUNTY ROAD DEPT. OR CALIF. STATE HIGHWAY DEPT. SPECIFICATIONS IN ACCORDANCE WITH PERMITS.
  - INDICATE FOUR FEET OF SEWER AT POINTS OF INTERFERENCE WITH POLES, CABLES, ETC., 5'-0" MIN.
  - HOUSE LATERALS TO BE CONSTRUCTED WITH BRICKS AT PROPERTY LINE. 6" MIN. BELOW CURB GRADE EXCEPT AS NOTED.
  - ALL STRUCTURES SHALL BE BRICK EXCEPT AS NOTED.
  - FOR ALLOWABLE LEAKAGE USE FORMULA NO. 1000, S.P.C.E., INC. 24.
  - MANHOLE TOPS IN UNIMPROVED RIGHTS-OF-WAY TO BE 6" ABOVE FINISHED GRADE.
  - THE PRIVATE ELEVATIONS SHALL FOLLOW THE NORMAL LATHEAL GRADE AT THE PROPERTY LINE BELOW THE TOP OF CURB ELEVATION FOR EACH HOUSE LATERAL ON THE GRADE SHEET.
  - THE CONTRACTOR SHALL NOTIFY THE CONSTRUCTION & STREETS DEPARTMENT DIVISION BY TELEPHONE, 844-8747, EXT. 306, AT LEAST SEVEN (7) DAYS BEFORE STARTING ANY WORK UNDER THIS CONTRACT.
  - STANDARD SPECIFICATIONS DATED MAY 15, 1958 APPLY IN THE CONSTRUCTION OF THIS PROJECT.



INDEX MAP  
 TRACT No. 24600  
 P.C. 5032 SCALE 1"=300'

B.M. S.Y. 4017 L.E.B.N. W. Side Driveway  
 to house #15046 Lemon Dr & 38' S. E. Lemon Dr  
 & 225' E. & Scott Ave. (La Mirada Quad. 1955)  
 ELEV. 237.881

NO CHARGE FOR CONNECTIONS

COUNTY OF LOS ANGELES, CALIFORNIA

APPROVED, JOHN A. LAMBIE, COUNTY ENGINEER

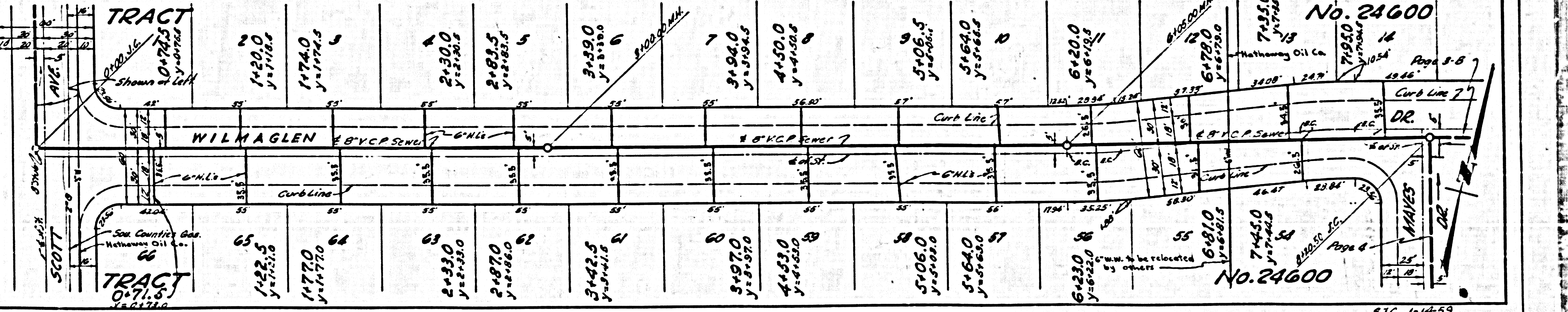
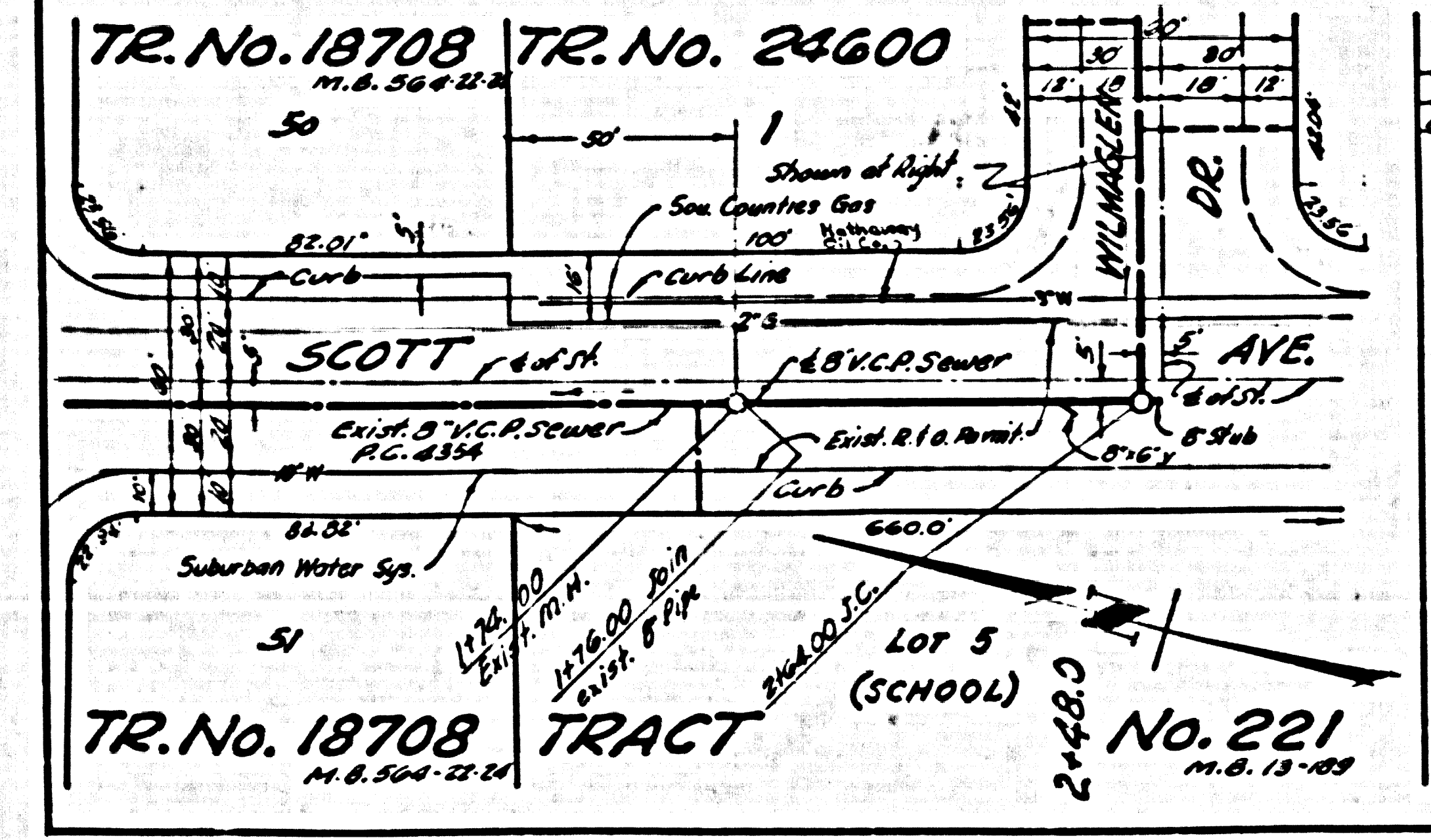
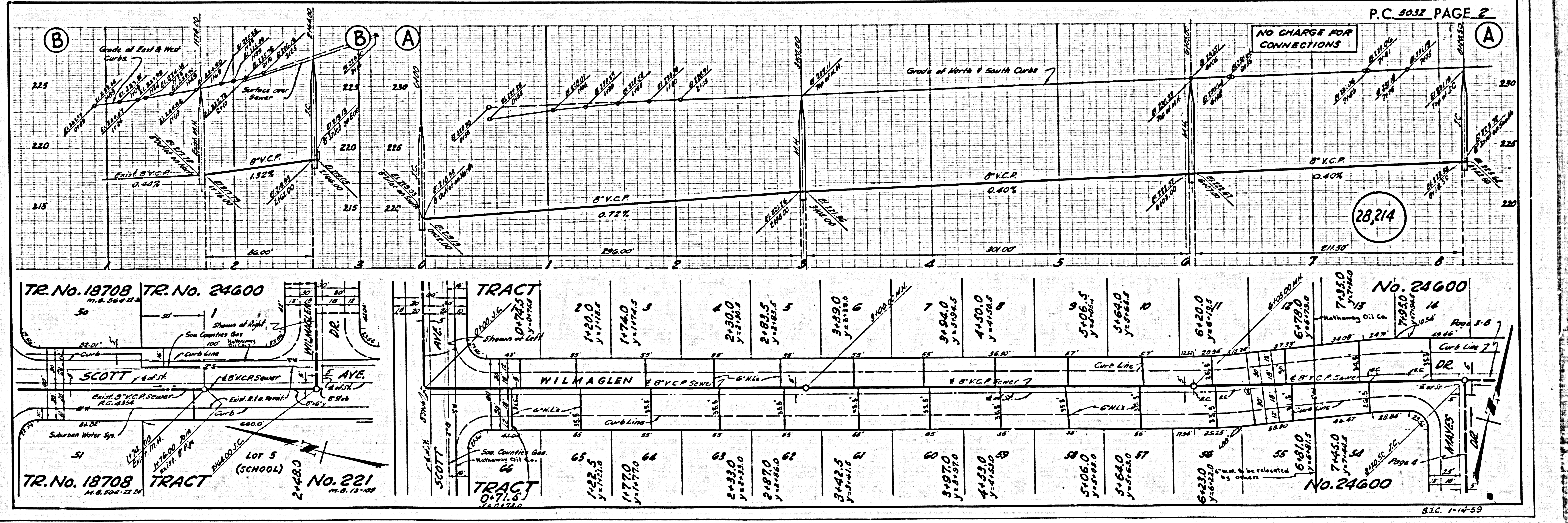
APPROVED, CARL COMPTON, CHIEF ENGINEER

BY *Carl Compton* CHIEF ENGINEER

CHECKED BY *Carl S. Patten* CHIEF ENGINEER

OFFICE OF COUNTY ENGINEER, REG. C. E. NO. 12,677

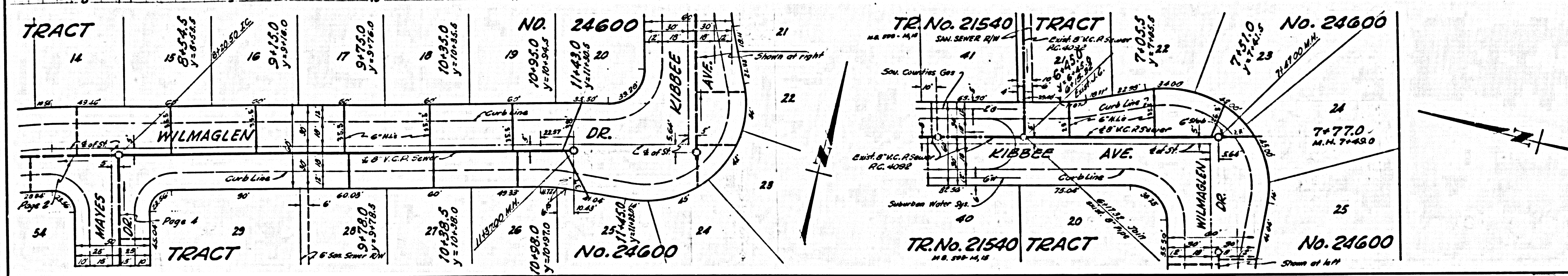
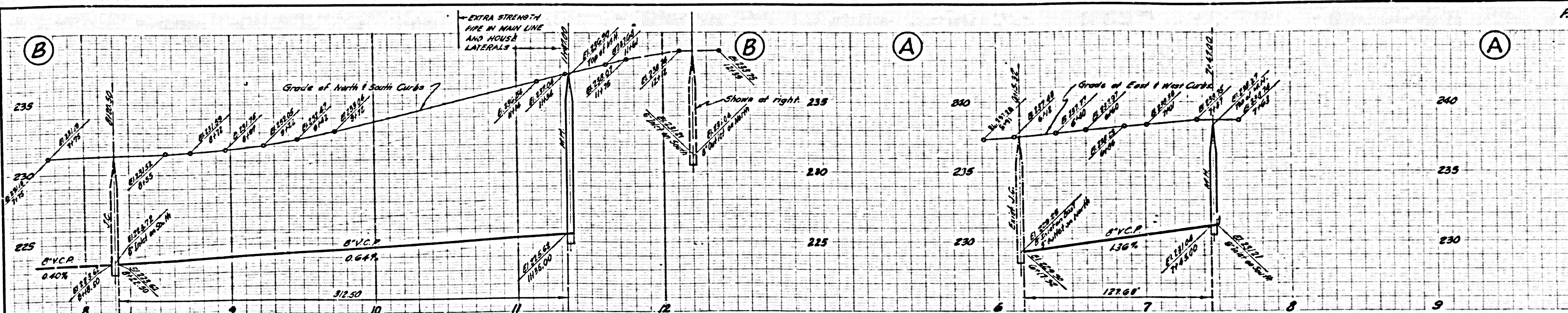
APPROVED, INDUSTRIAL WASTE DIV.  
 BY *Donald J. Uelsh* 4/15/59





NO CHARGE FOR CONNECTIONS

28,215



NO CHARGE FOR CONNECTIONS

28,216

