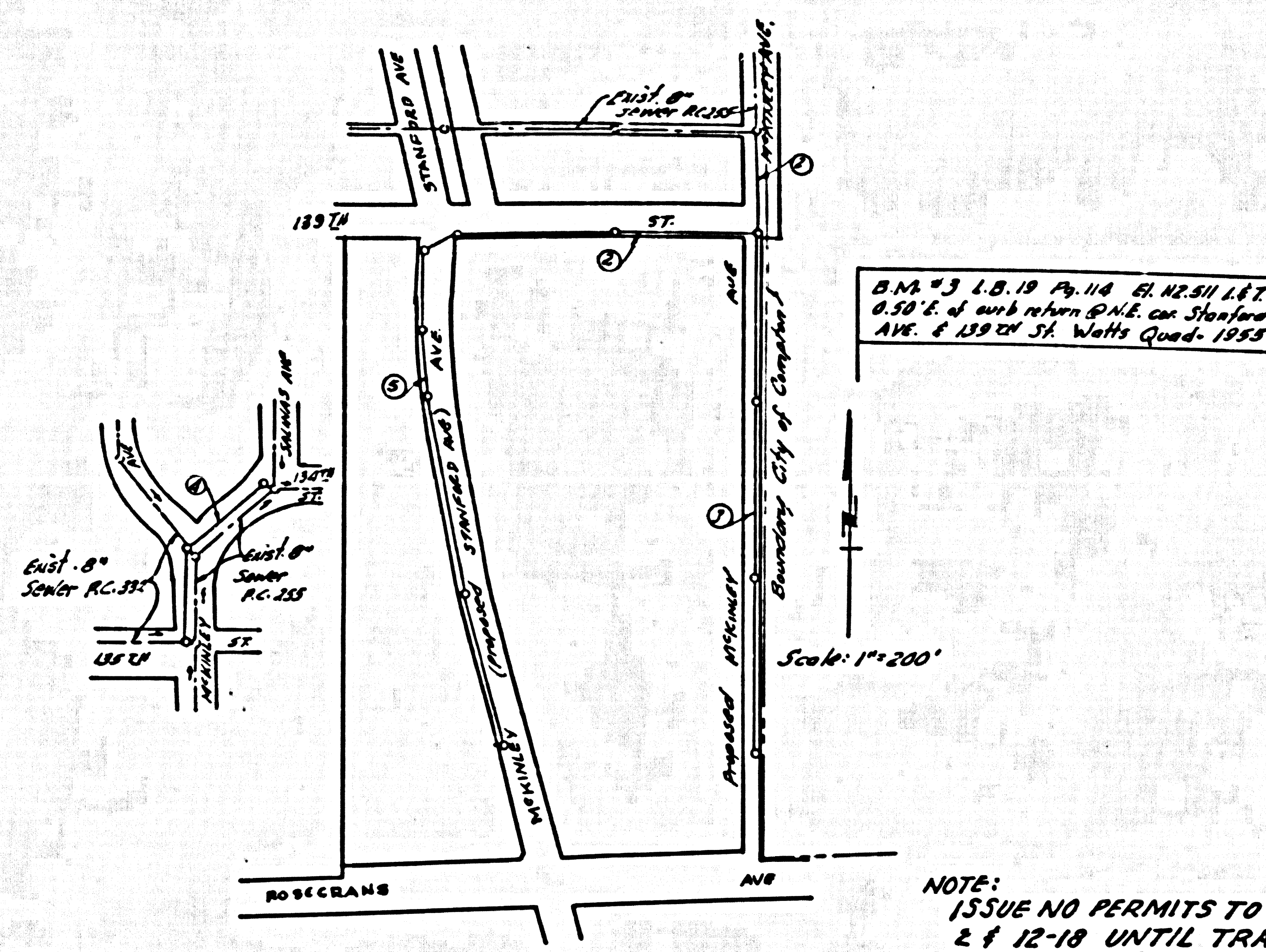


LENNOX BLDG. DIST. NO. 7



- NOTES:
- PROVIDE STAKES ON THE PROPERTY LINE OR PROPERTY LINES, PRODUCED AT RIGHT ANGLES TO THE SEWER LINE AT THE CENTER LINE OF EACH MANHOLE.
 - NO REPRESENTATIVE OF THE COUNTY ENGINEER WILL SURVEY OR LAY OUT ANY PORTION OF THE WORK.
 - THE OWNER OR HIS AUTHORIZED REPRESENTATIVE SHALL FURNISH THE COUNTY ENGINEER WITH GRADE SHEETS AND STATIONING FOR ALL HOUSE LATERALS AND T-BRANCHES AND SHALL PROVIDE STAKES FOR THEM AT THEIR RESPECTIVE LOCATIONS WITH STATIONING PLAINLY MARKED. ANY CHANGE IN LOCATION SHALL BE REQUESTED IN WRITING BY THE OWNER OR HIS REPRESENTATIVE.
 - THE PRIVATE ENGINEER SHALL FURNISH THE HOUSE LATERAL BATHS AT THE PROPERTY LINE SHOW THE TOP OF CURB ELEVATION FOR EACH HOUSE LATERAL ON THE GRADE SHEET.
 - NO REVISIONS SHALL BE MADE IN THESE PLANS WITHOUT THE APPROVAL OF THE COUNTY ENGINEER.
 - USE STANDARD MANHOLE FRAMES AND COVERS, S-117, EXCEPT AS NOTED.
 - USE STANDARD STRENGTH PIPE EXCEPT AS NOTED.
 - USE CEMENT MORTAR OR "WEDGE-LOCK" OR "SPREAD-BALL" FOR ALL V.C.P. JOINTS PER SPECS. SECS. 26 & 6.
 - REPAIRS TO ALL TRENCHES WITHIN PAVED AREA TO MEET L.A. COUNTY ROAD DEPT. OR CALIF. STATE HIGHWAY DEPARTMENT'S IN ACCORDANCE WITH PERMITS.
 - INCASE FOUR FEET OF SEWER AT POINTS OF REFERENCE WITH POLES, CASE III, S-175.
 - HOUSE LATERALS TO BE CONSTRUCTED WITH A 1/4" RISE PER FT. TO PROPERTY LINE, LOW 1/2" HORIZONTAL.
 - ALL STRUCTURES SHALL BE BACK SEWER STRUCTURES, S-194, EXCEPT AS NOTED.
 - FOR ALLOWABLE LEAKAGE TEST USE FORMULA NO. 1, SPECS., SEC. 54.
 - MANHOLE TOPS BE UNIMPROVED HEIGHTS-OF-WAY TO BE SIX INCHES ABOVE FINISHED GRADE.
 - THE CONTRACTOR SHALL NOTIFY THE CONSTRUCTION & STORM DRAIN DIVISION BY TELEPHONE, MADISON 5-60, EXT. 362, AT LEAST TWENTY FOUR HOURS BEFORE STARTING ANY WORK UNDER THIS CONTRACT.
 - ALL THE LOCATIONS SHOWN FOR EXISTING SUBSTRUCTURES HAVE BEEN TAKEN FROM RECORDS AND THEIR CORRECTNESS AND COMPLETENESS IS IN NO WAY GUARANTEED. IT SHALL BE THE CONTRACTOR'S RESPONSIBILITY ALONE TO DEFINITELY LOCATE ALL UNDERGROUND LINES OF EVERY NATURE WHETHER SHOWN HEREIN OR NOT, AND PROTECT THEM FROM DAMAGE. THE CONTRACTOR SHALL BEAR THE TOTAL COST OF REPAIR TO ANY LINES DAMAGED BY ANY OPERATION IN CONNECTION WITH THE PROVISIONS OF THIS SPECIFICATION.
 - Before work is done in City Streets, an excavation permit must be obtained from the City of Compton.

NOTE:
ISSUE NO PERMITS TO LOTS
2 & 12-18 UNTIL TRACT
NO 23077 RECORDS

CITY OF COMPTON
APPROVED, D.W. ROGINS, CITY ENGINEER
BY: *Alan W. Kelms*

NO CHARGE FOR
CONNECTIONS
4-15-59

INDEX MAP
P.C. 5033
TRACT NO 23077

PROFILE ALIGNMENT AND GRADE OF P.C. 5033
SANITARY SEWERS PAGE 1
TO BE CONSTRUCTED IN J.N. 0350.07

139TH STREET
MCKINLEY AVENUE
TRACT NO 23077

PRIVATE CONTRACT NO. 5033

W.S. 26
3 SHEETS; 5 PAGES

SCALE: VERT. 1"=4' JAN. 1959

PREPARED BY THE OFFICES OF
BARCLAY PEARSON ENGINEERING CO.

Barclay Pearson
REG. C. E. NO. 7283

FOR LEGEND SEE PLAN NO. S-A-64

WORK:
GRADES TO WHICH THE IMPROVEMENTS IS TO BE CONSTRUCTED ARE SHOWN ON PLANS AND PROFILES. GRADE POINTS FOR TOP OF CURB, CENTER LINE OF STREETS, LA CENTER LINE OF ALLEYS AND SHOWN BY CIRCLES ON PROFILES. AT ALL POINTS BETWEEN DESIGNATED POINTS THE GRADE SHALL BE ESTABLISHED SO AS TO CONFORM TO A STRAIGHT LINE BETWEEN SAID DESIGNATED POINTS.
DEFINITIONS ARE IN FEET ABOVE U.S.C. & G.S. SEA LEVEL DATUM OF 1929.
THESE DRAWINGS AND THE DATA HEREON ARE HEREBY MADE A PART OF THE SPECIFICATIONS.
WORK SHALL BE CONSTRUCTED ACCORDING TO SPECIFICATIONS ON FILE IN THE OFFICE OF THE COUNTY ENGINEER AND SHALL BE PROSECUTED ONLY IN THE PRESENCE OF THE COUNTY ENGINEER.
BEFORE WORK CAN BE STARTED, THE CONTRACTOR MUST OBTAIN A PERMIT TO EXCAVATE IN COUNTY STREETS FROM THE L.A. COUNTY ROAD DEPT., DISTRICT OFFICE NO. 3, AND MAKE A REPORT WITH THE COUNTY ENGINEER, ROOM 24 PARK AVENUE, BUREAU, 335 SO. BROADWAY SUFFICIENT TO COVER THE COST OF CONSTRUCTION INSPECTION AND RECORD PLANS.
APPROVAL OF THIS PLAN BY THE COUNTY OF LOS ANGELES DOES NOT CONSTITUTE A REPRESENTATION AS TO THE ACCURACY OF THE LOCATION OF OR THE EXISTENCE OR NON-EXISTENCE OF ANY UNDERGROUND UTILITY PIPES, OR STRUCTURE WITHIN THE LIMITS OF THE PROJECT. THE NOTE APPLIES TO ALL PAGES.
IF WORK IS TO BE DONE IN A STATE HIGHWAY, A PERMIT MUST BE OBTAINED FROM THE STATE OF CALIFORNIA, DIVISION OF HIGHWAYS, 128 SOUTH SPRING STREET.

COUNTY OF LOS ANGELES, CALIFORNIA

APPROVED, JOHN A. LAMBE, COUNTY ENGINEER

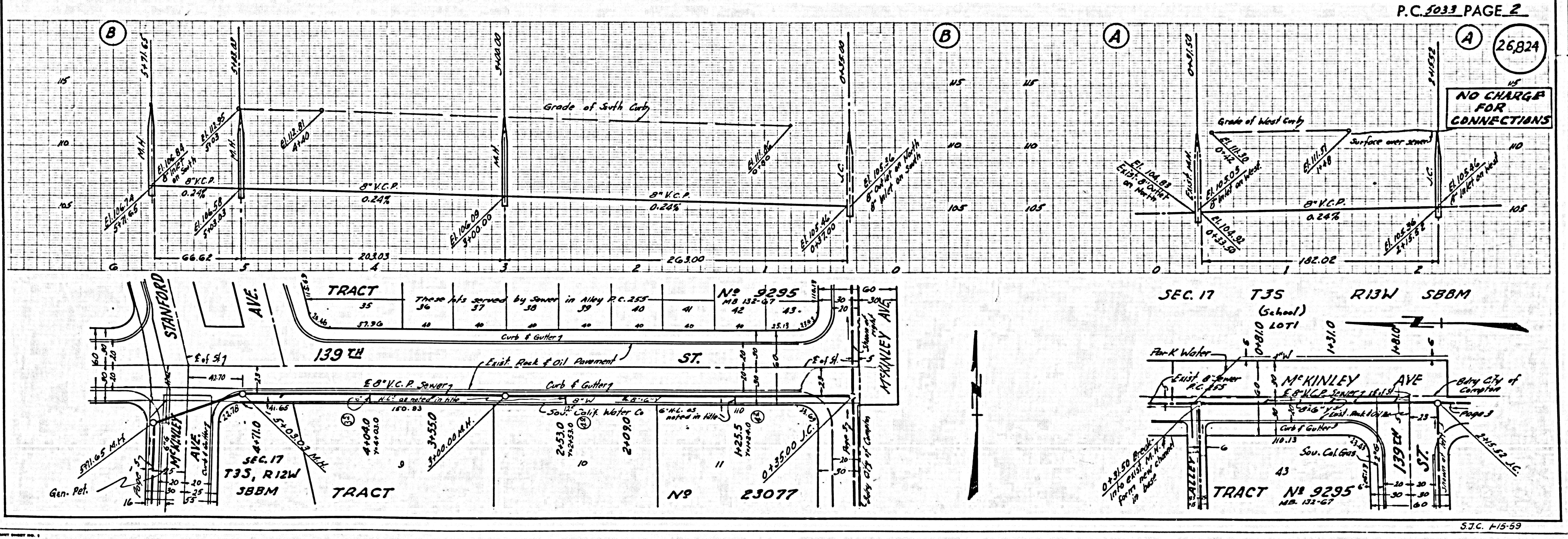
APPROVED, E.B. CAMPBELL, DISTRICT ENGINEER

BY: *John A. Lamb*
SANITATION ENGINEER

BY: *E.B. Campbell*
DISTRICT ENGINEER

CHECKED BY: *J.C. Underwood*
OFFICE OF COUNTY ENGINEER, REG. C. E. NO. 9346

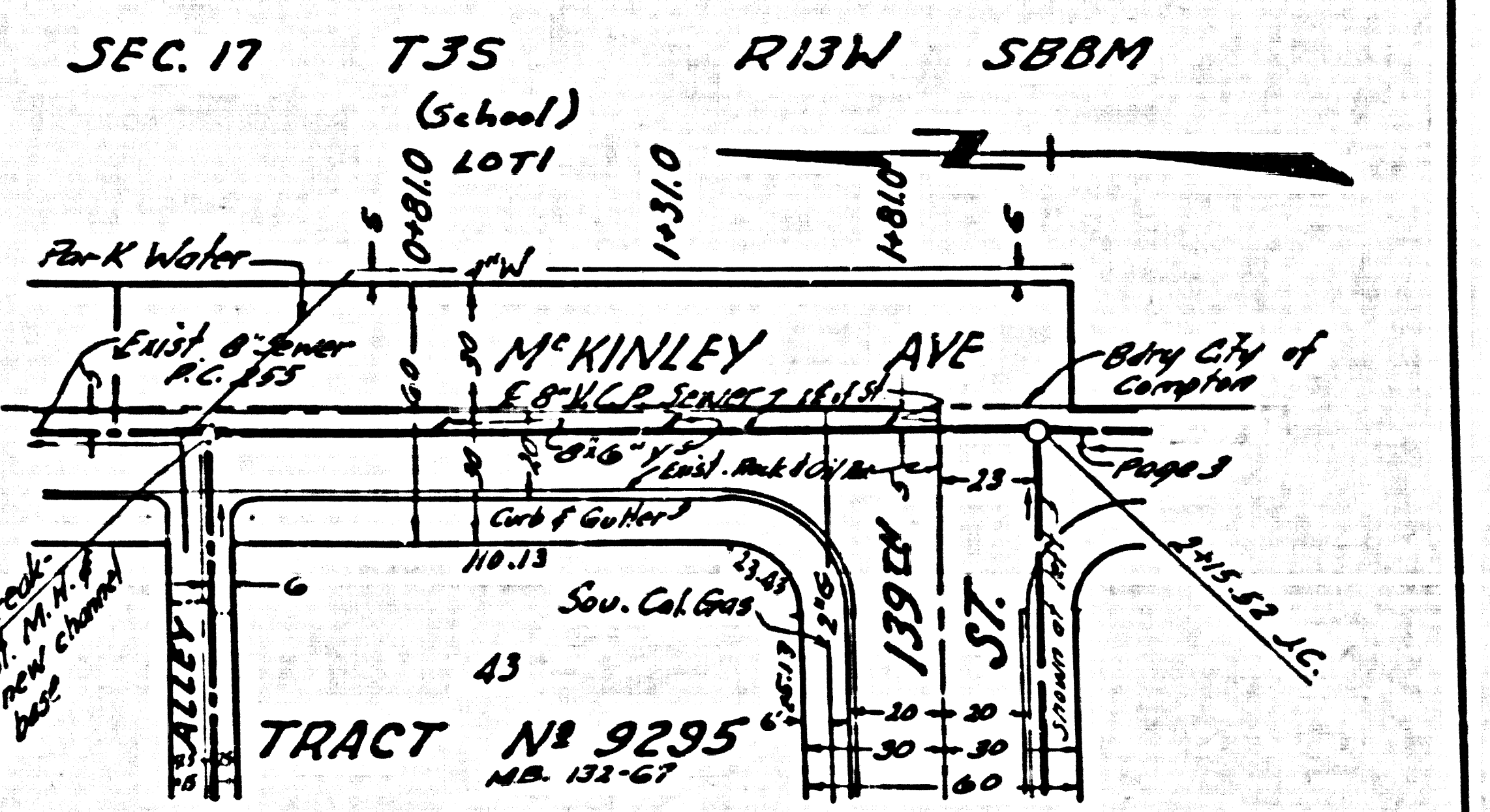
Approved By *Donald V. Nelson* 1/16/59
Industrial Waste Division



P.C. 5033 PAGE 2

NO CHARGE FOR
CONNECTIONS

TRACT	These lots served by sewer in Alley P.C. 253	NO 9295
35	36	37
38	39	40
41	42	43
44	45	46
47	48	49
50	51	52
53	54	55
56	57	58
59	60	61
62	63	64
65	66	67
68	69	70
71	72	73
74	75	76
77	78	79
80	81	82
83	84	85
86	87	88
89	90	91
92	93	94
95	96	97
98	99	100



S.J.C. 1-15-59

26.827

NO CHARGE FOR CONNECTIONS

