

WHITTIER BLDG. DIST. NO. 11

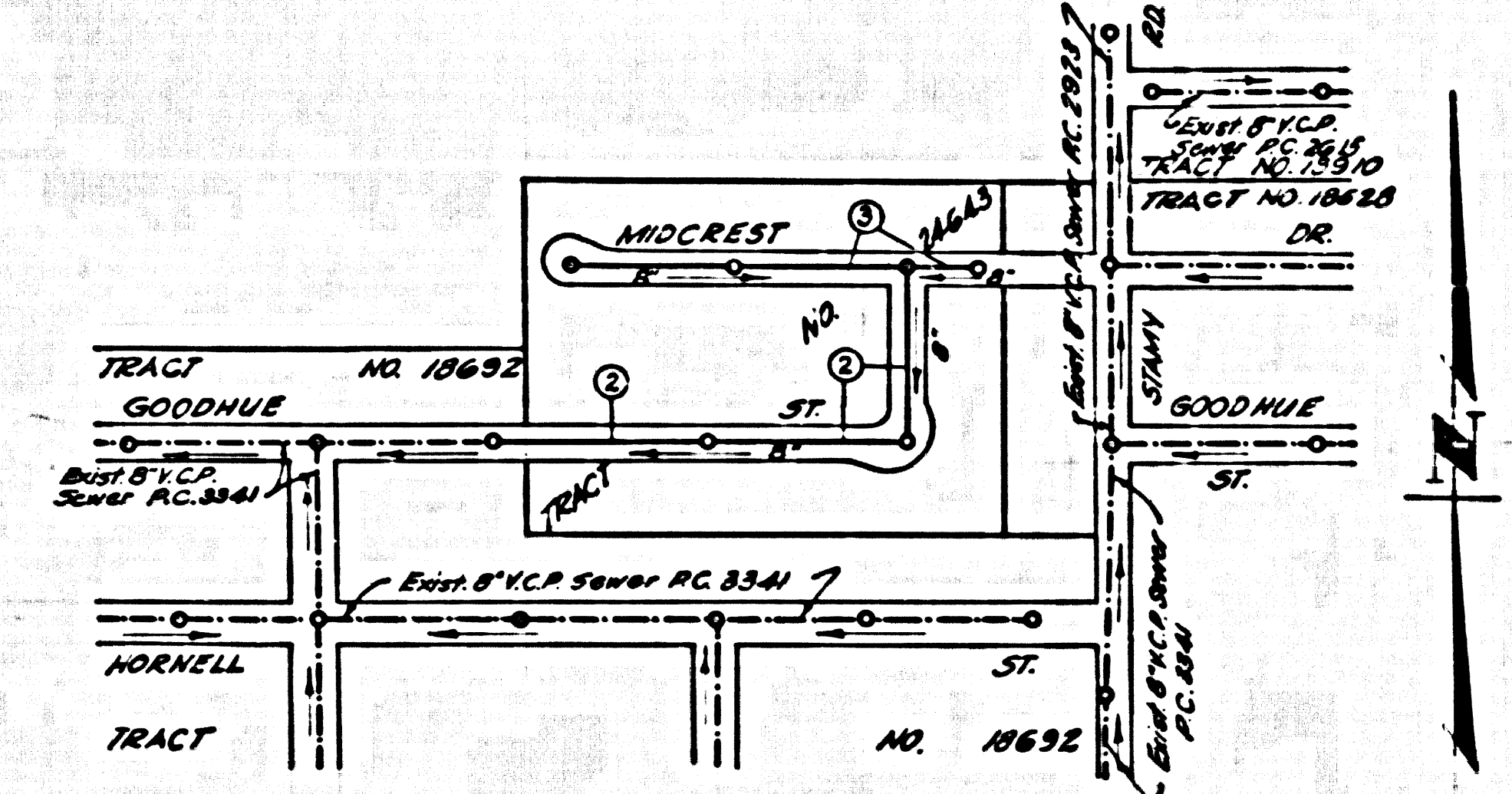
PROFILE ALIGNMENT AND GRADE OF P.C. 5035
 SANITARY SEWERS PAGE 1
 TO BE CONSTRUCTED IN J.N. 0350.03

TRACT No. 24643
 JOB NUMBER 0350.03
 PRIVATE CONTRACT NO. 5035

W.S. 54
 2 SHEETS, 3 PAGES
 SCALE: VERT. 1"=4' HORIZ. 1"=40' JAN., 1959
 PREPARED IN THE OFFICES OF
KEMMERER ENGR. CO. INC.
 BY Robert R. Flues
 REG. C. E. NO. 11343
 FOR LEGEND SEE PLAN NO. S-A-64

27,815

- NOTE:
 PROVIDE STAGES ON THE PROPERTY LINE OR PROPERTY LINES PRODUCED AT RIGHT ANGLES TO THE SEWER LINE AT THE CENTER LINE OF EACH MANHOLE.
 NO REPRESENTATIVE OF THE COUNTY ENGINEER WILL SURVEY OR LAYOUT ANY PORTION OF THE WORK.
 THE OWNER OR HIS AUTHORIZED REPRESENTATIVE SHALL FURNISH THE COUNTY ENGINEER WITH GRADE SHEETS AND STATIONING PLANNY SHEETS, ANY CHANGE IN LOCATION SHALL BE REQUESTED BY WRITING IN THE OFFICE OF THE REPRESENTATIVE.
 NO REVISIONS SHALL BE MADE IN THESE PLANS WITHOUT THE APPROVAL OF THE COUNTY ENGINEER.
 1. USE STANDARD MANHOLE FRAMES AND COVERS, S-A-117.
 2. USE STANDARD STRENGTH PIPE EXCEPT AS NOTED.
 3. USE CAMBAY MORTAR, "WERRA-LOCK", OR "SPEED-SEAL" FOR ALL WETTED CLAY PIPE JOINTS (SEE SPEC. SECTION 5-A-64).
 4. RESURFACE ALL TRENCH WITHIN PAVED AREA TO MEET L.A. COUNTY ROAD DEPT., OR CALIF. STATE HIGHWAY DEPT. SPECIFICATIONS IN ACCORDANCE WITH PERMITS.
 5. INCASE FOUR FEET OF SEWER AT POINTS OF INTERFERENCE WITH POLES, S-A-75 - CASE II.
 6. HOUSE LATERALS TO BE CONSTRUCTED WITH INVERTS AT PROPERTY LINE... FEET BELOW CURB GRADE EXCEPT AS NOTED.
 7. ALL STRUCTURES SHALL BE BRICK SEWER STRUCTURES, S-A-104.
 8. FOR ALLOWABLE LEAKAGE TEST USE FORMULA NO. 1 SPEC'G, SEC. 54.
 9. MANHOLE TOPS IN UNPAVED RIGHTS-OF-WAY TO BE 6" ABOVE FINISHED GRADE.
 10. THE PRIVATE ENGINEER IS TO FURNISH THE HOUSE LATERAL DEPTH AT THE PROPERTY LINE BELOW THE TOP OF CURB ELEVATION FOR EACH HOUSE MATERIAL ON THE PLANNY SHEET.



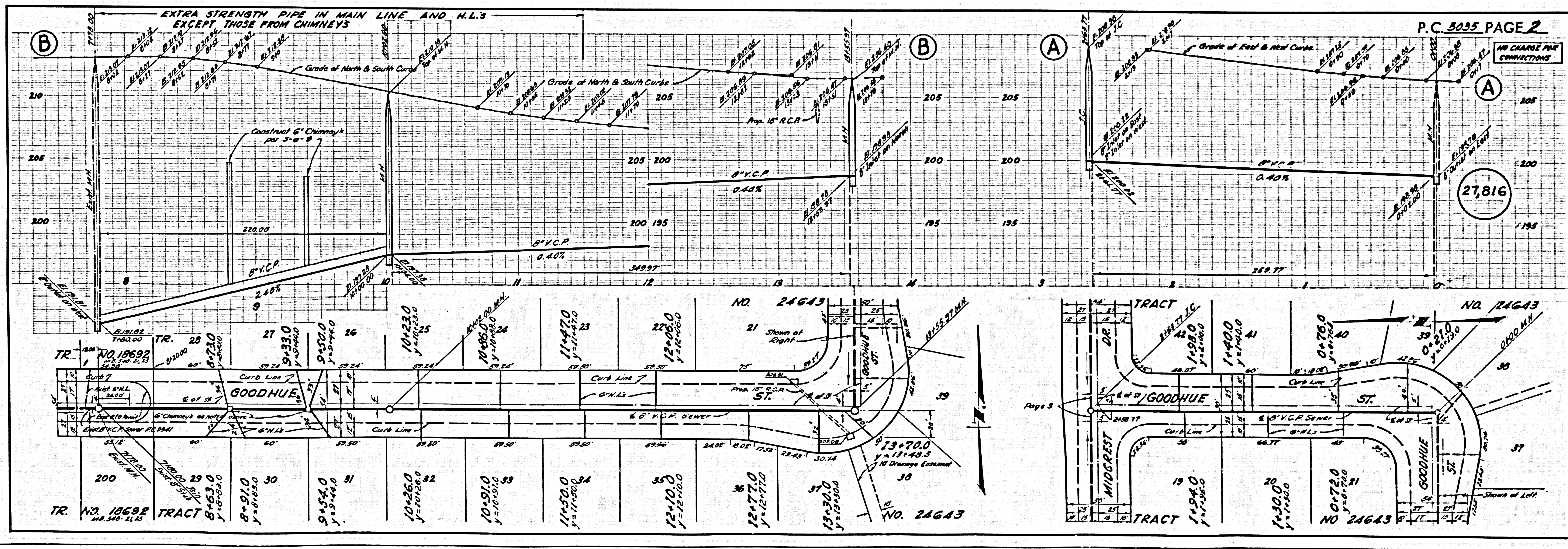
INDEX MAP
 TRACT No. 24643
 P.C. 5035 Scale: 1"=300'

NO CHARGE FOR CONNECTIONS
 E. Newsler 3-30-59

B.M. 31153 - C.S. MON. 15' E. INT. STAMM
 RD. N. OF LEFFINGWELL RD. 3.50' E.
 45' TRAVEL WELL RD. (Close Line 1555)
 E/4th 224.878.

NOTE:
 GRADES TO WHICH THE IMPROVEMENT IS TO BE CONSTRUCTED AND SHOWN ON PLANS AND PROFILES. GRADE POINTS FOR TOP OF CURB, CENTER LINE OF STREETS, OR CENTER LINE OF ALLEYS ARE SHOWN BY CIRCLES ON PROFILES AT ALL POINTS BETWEEN DESIGNATED POINTS THE GRADE SHALL BE ESTABLISHED SO AS TO CONFORM TO A STRAIGHT LINE DRAWN BETWEEN SAID DESIGNATED POINTS.
 ELEVATIONS ARE IN FEET ABOVE U.S.C. & G.S. SEA LEVEL UNLESS OTHERWISE SPECIFIED.
 THIS DRAWING AND THE DATA HEREON AND HEREIN MAKE A PART OF THE SPECIFICATIONS.
 WORK SHALL BE CONSTRUCTED ACCORDING TO SPECIFICATIONS ON FILE IN THE OFFICE OF THE COUNTY ENGINEER AND SHALL BE PRODUCED ONLY IN THE PRESENCE OF THE COUNTY ENGINEER.
 BEFORE WORK CAN BE STARTED, THE CONTRACTOR MUST OBTAIN A PERMIT TO EXCAVATE IN COUNTY STREETS FROM THE L.A. COUNTY ROAD DEPT., DIST. 10, AND MAKE A REPORT WITH THE COUNTY ENGINEER, ROOM 304 MAIN AMERICAN BLDG., 315 SO. BROADWAY SUFFICIENT TO COVER THE COST OF CONSTRUCTION INSPECTION AND RECORD PLANS.
 APPROVAL OF THIS PLAN BY THE COUNTY OF LOS ANGELES DOES NOT CONSTITUTE A REPRESENTATION AS TO THE ACCURACY OF THE LOCATION OF OR THE EXISTENCE OR NON-EXISTENCE OF ANY UNDERGROUND UTILITY PIPE OR STRUCTURE WITHIN THE LIMITS OF THIS PROJECT THIS NOTE APPLIES TO ALL PAGES.
 IF WORK IS TO BE DONE BY A STATE HIGHWAY, A PERMIT MUST BE OBTAINED FROM THE STATE OF CALIFORNIA, DIVISION OF HIGHWAYS, 128 SOUTH SPRING STREET.
 COUNTY OF LOS ANGELES, CALIFORNIA
 APPROVED, JOHN A. LAMBE, COUNTY ENGINEER
 APPROVED, C.F. COMPTON, CHIEF ENGINEER
 BY Robt. Flues SANITATION ENGINEER BY W. H. ... OFFICE ENGINEER
 CHECKED BY J. ...
 OFFICE OF COUNTY ENGINEER, REG. C. E. NO. 3454

SUBMITTED BY John L. ... 3-30-59
 L.A. COUNTY REGIONAL ENGINEER R.C.E. NO. 3871



P.C. 5035 PAGE 2

27,816

NO CHARGE FOR CONNECTIONS

27,817

