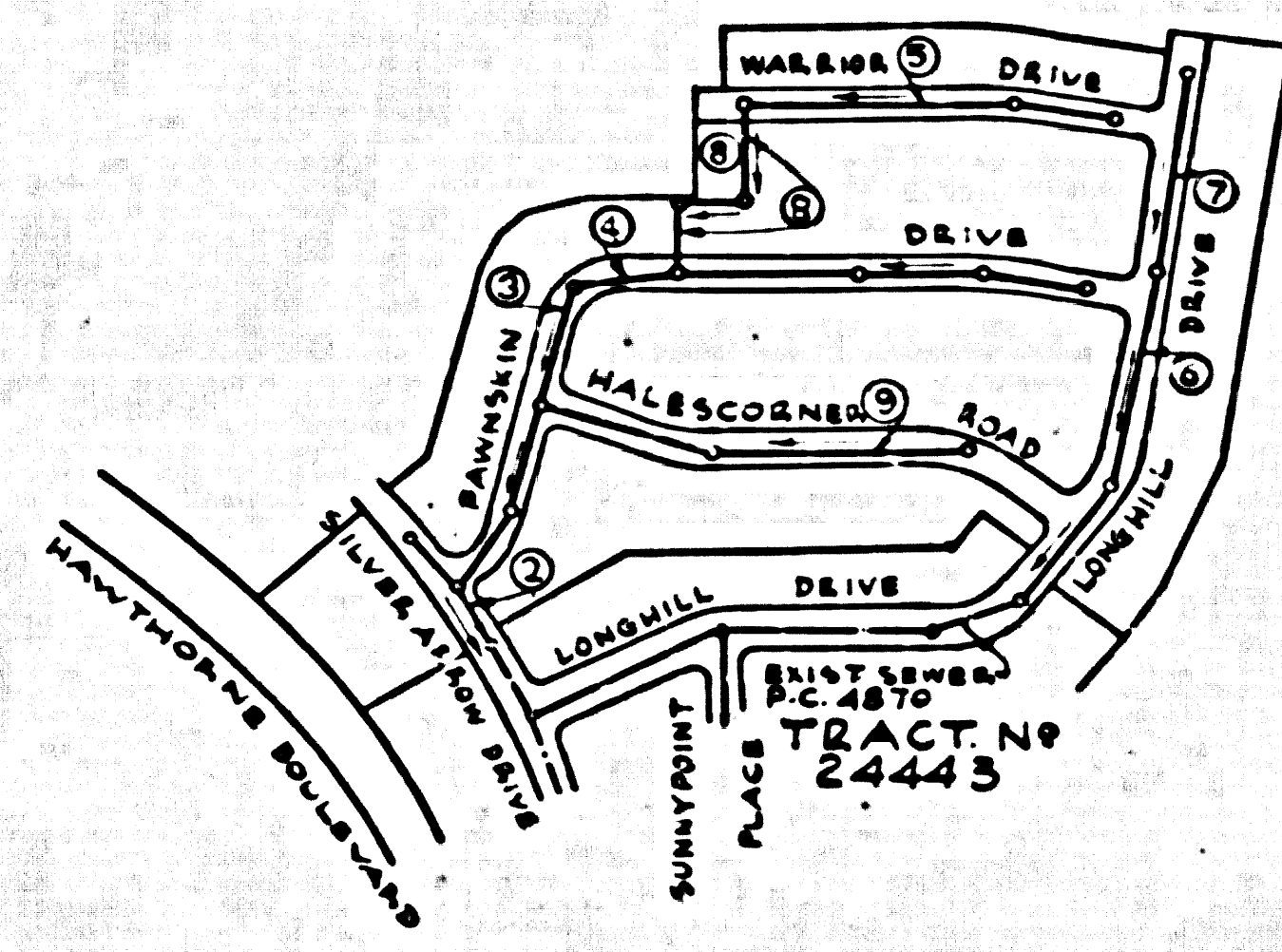


County surveyor B.M. U5465 4th. disc stamped Q 780-1946 set flush with ground 45.1' N of E of Palos Verdes Drive North 474' East of E of Narbonne Avenue. Elev. 955518

NOTE: County surveyor B.M. 96-7 Co. precise survey 1539 Adjustable 355 539. Add 0.005' to all elevations shown hereon to agree with 1951 adjustment.



INDEX MAP
TRACT NO 24627
Scale: 1"=400'
P.C. 5037

NO CHARGE FOR CONNECTIONS
L. Curtis 3-14-50

LOMITA BLDG. DIST. NO. 71'

- NOTE:
PROVIDE STAKES ON THE PROPERTY LINE OR PROPERTY LINES PRODUCED AT RIGHT ANGLES TO THE SEWER LINE AS THE CENTER LINE OF EACH MANHOLE.
NO REPRESENTATIVE OF THE COUNTY ENGINEER WILL SURVEY OR LAYOUT ANY PORTION OF THE WORK.
THE OWNER OR HIS AUTHORIZED REPRESENTATIVE SHALL FURNISH THE COUNTY ENGINEER WITH GRADE SHEETS AND STATION FOR ALL HOUSE LATERALS AND T BRANCHES AND SHALL PROVIDE STAKES FOR THEM AT THEIR PROPER LOCATIONS WITH STATIONING AND PLANNED MARKERS. ANY CHANGE IN LOCATION SHALL BE REQUESTED IN WRITING BY THE OWNER OR HIS REPRESENTATIVE.
NO DIVISIONS SHALL BE MADE IN THESE PLANS WITHOUT THE APPROVAL OF THE COUNTY ENGINEER.
- USE STANDARD MANHOLE FRAMES AND COVERS, S-A-117, EXCEPT AS NOTED.
 - USE STANDARD STRENGTH PIPE EXCEPT AS NOTED.
 - USE CEMENT MORTAR "THUNDER LOCK" OR "SPEED SEAL" IN ALL V.C.P. JOINTS PER SPACS, SECS 26 & 48.
 - RESURFACE ALL TRENCH WITHIN PAVED AREA TO MEET L. A. COUNTY ROAD DEPT., OR CALIF. STATE HIGHWAY DEPT. REQUIREMENTS IN ACCORDANCE WITH PERMITS.
 - EXCAVE FOUR FEET OF SEWER AT POINTS OF INTERFERENCE WITH POLES, CASES, ETC., S-P-172.
 - HOUSE LATERALS TO BE CONSTRUCTED WITH INVERTS AT PROPERTY LINE 6 FEET BELOW CURB GRADE EXCEPT AS NOTED.
 - ALL STRUCTURES SHALL BE BRICK SEWER STRUCTURES, S-A-104, EXCEPT AS NOTED.
 - FOR ALLOWABLE LEAKAGE TEST USE FORMULA NO. _____ SP.C.S., SEC. 54.
 - MANHOLE TOPS IN UNIMPROVED RIGHTS-OF-WAY TO BE 6" ABOVE FINISHED GRADE.
 - THE PRIVATE ENGINEER IS TO FURNISH THE HOUSE LATERAL SEWER AT THE PROPERTY LINE SHOW THE TOP OF CURB ELEVATION FOR EACH HOUSE LATERAL ON THE GRADE SHEET.
 - THE CONTRACTOR SHALL NOTIFY THE CONSTRUCTION AND BEAM BRANCH DIVISION BY TELEPHONE, HARBOR 9-040, EXT. 262, AT LEAST 24 HOURS BEFORE STARTING ANY WORK UNDER THIS CONTRACT.
 - (a) NO CONSTRUCTION WILL BE PERMITTED IN FILLED AREAS UNLESS ACCEPTABLE CERTIFICATION IS SUBMITTED TO THE CONSTRUCTION DIVISION OF THE COUNTY ENGINEER'S DEPARTMENT THAT RELATIVE COMPACTION IS GREATER THAN 80%.
(b) IF COMPACTION IS LESS THAN 80%, THE SEWER MUST BE CRADLED AS SHOWN ON THE PLANS PER S-P-166.
(c) IF COMPACTION IS GREATER THAN 80%, CRADLING SPECIAL ALL BASES ARE NOT REQ'D; HOWEVER, JOINT COMPOUND MUST BE SUBSTITUTED FOR CEMENT MORTAR IN ALL V.C.P. JOINTS IN FILLED AREAS.

ENGINEERING SERVICE CORPORATION 1127 W. WASHINGTON BLVD. LOS ANGELES 15, CALIF. RI. 9-7281				
REVISIONS		TRACED BY: W.B.		
		DES'G'D BY: CRR		
		CK'D BY:		
		SUBMITTED:		
SUB STRUCTURES OK'D				
W. O. NO.	DWS. NO.	DATE	SCALE	L. B. P. B.
6681-111		Nov. 1950	As Noted	

PROFILE ALIGNMENT AND GRADE OF P.C. 5037
SANITARY SEWERS PAGE 1
TO BE CONSTRUCTED IN J.N. 0350.10
TRACT NO 24627

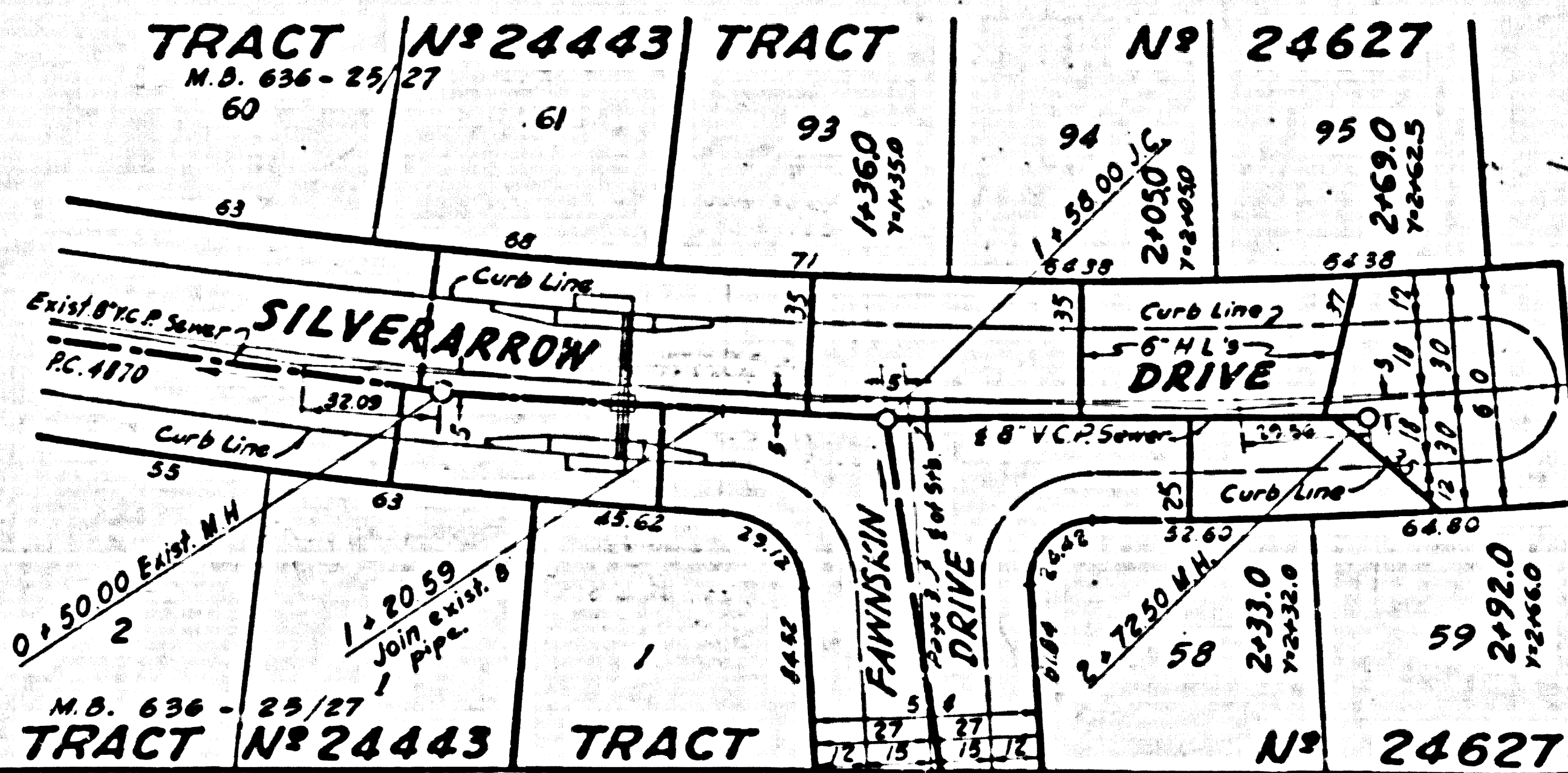
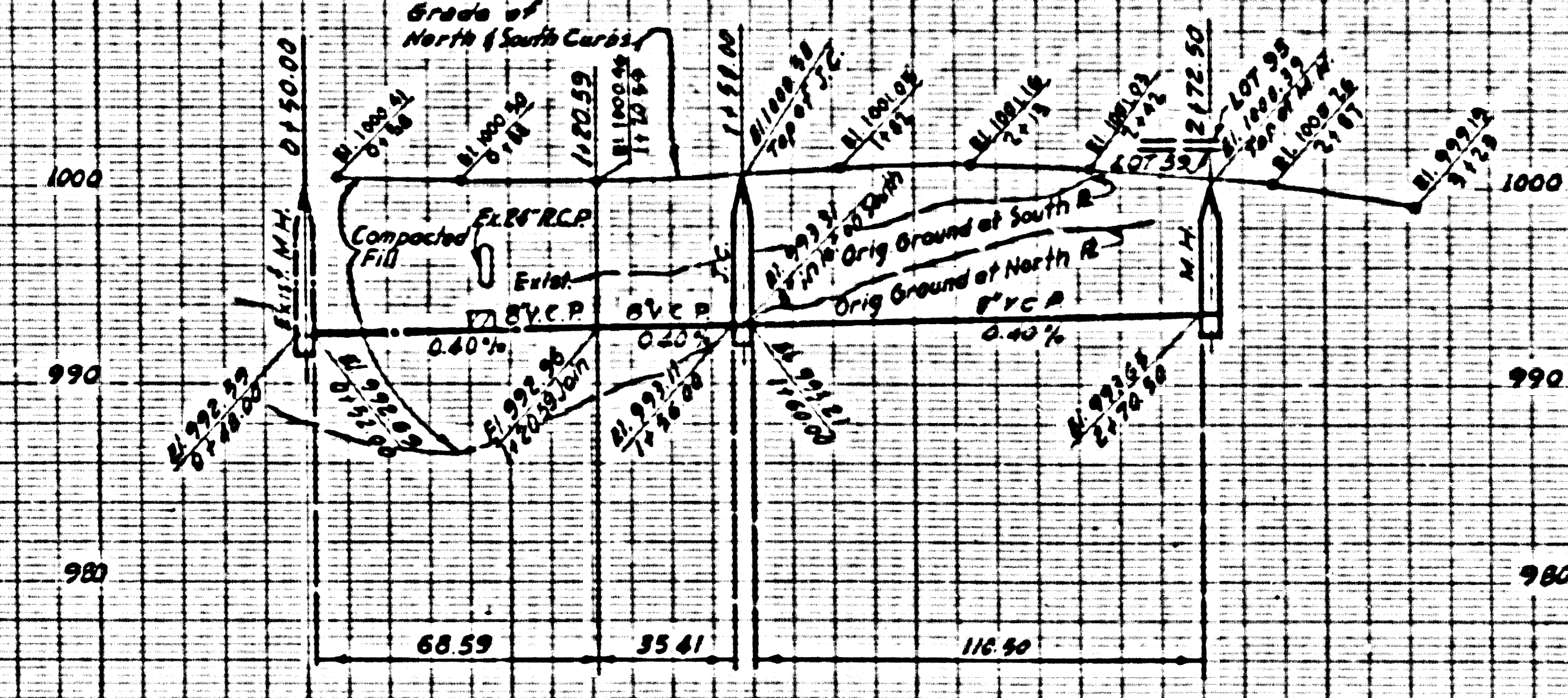
PRIVATE CONTRACT NO. 5037
W.S. 27
5 SHEETS, 2 PAGES
SCALE: VERT. 1"=4' HORIZ. 1"=40' DEC 1958
PREPARED IN THE OFFICES OF
ENGINEERING SERVICE CORPORATION
By: P. J. Koenig
REG. C. E. NO. 3692
FOR LEGEND SEE PLAN NO. S-A-64

NOTE:
GRADE TO WHICH THIS IMPROVEMENT IS TO BE CONSTRUCTED AND SHOWN ON PLANS AND PROFILE GRADE POINTS FOR TOP OF CURB, CENTER LINE OF STREETS, OR CENTER LINE OF ALLEYS ARE SHOWN BY CIRCLES ON PROFILES AT ALL POINTS BETWEEN DESIGNATED POINTS THE GRADE SHALL BE ESTABLISHED SO AS TO CONFORM TO A STRAIGHT LINE DRAWN BETWEEN SAID DESIGNATED POINTS.
ELEVATIONS ARE IN FEET ABOVE U.S.C. & G.S. SEA LEVEL DATUM OF 1929.
THIS DRAWING AND THE DATA HEREON ARE HEREBY MADE A PART OF THE SPECIFICATIONS.
WORK SHALL BE CONSTRUCTED ACCORDING TO SPECIFICATIONS ON FILE IN THE OFFICE OF THE COUNTY ENGINEER AND SHALL BE PROSECUTED ONLY IN THE PRESENCE OF THE COUNTY ENGINEER.
BEFORE WORK CAN BE STARTED, THE CONTRACTOR MUST OBTAIN A PERMIT TO EXCAVATE IN COUNTY STREETS FROM THE L. A. COUNTY ROAD DEPT., DIST. 4223 AND MAKE A REPORT WITH THE COUNTY ENGINEER, ROOM 204 VAN AMERICAN BUILDING, 535 SO. BROADWAY SUBJECT TO COVER THE COST OF CONSTRUCTION INSPECTION AND RECORD PLANS.
APPROVAL OF THIS PLAN BY THE COUNTY OF LOS ANGELES DOES NOT CONSTITUTE A REPRESENTATION AS TO THE ACCURACY OF THE LOCATION OF OR THE EXISTENCE OR NON-EXISTENCE OF ANY UNDERGROUND UTILITY PIPE OR STRUCTURE WITHIN THE LIMITS OF THE PROJECT THIS NOTE APPLIES TO ALL PAGES.
IF WORK IS TO BE DONE IN A STATE HIGHWAY, A PERMIT MUST BE OBTAINED FROM THE STATE OF CALIFORNIA, DIVISION OF HIGHWAYS, 128 SOUTH SPRING STREET.

COUNTY OF LOS ANGELES, CALIFORNIA
APPROVED, JOHN A. LAMBE, COUNTY ENGINEER APPROVED, C. E. COMPTON, CHIEF ENGINEER
BY: [Signature] SANITATION ENGINEER BY: [Signature] OFFICE ENGINEER
CHECKED BY: Jk Oida 3-14-59
OFFICE OF COUNTY ENGINEER, REG. C. E. NO. 5406

P.C. 5037 PAGE 2

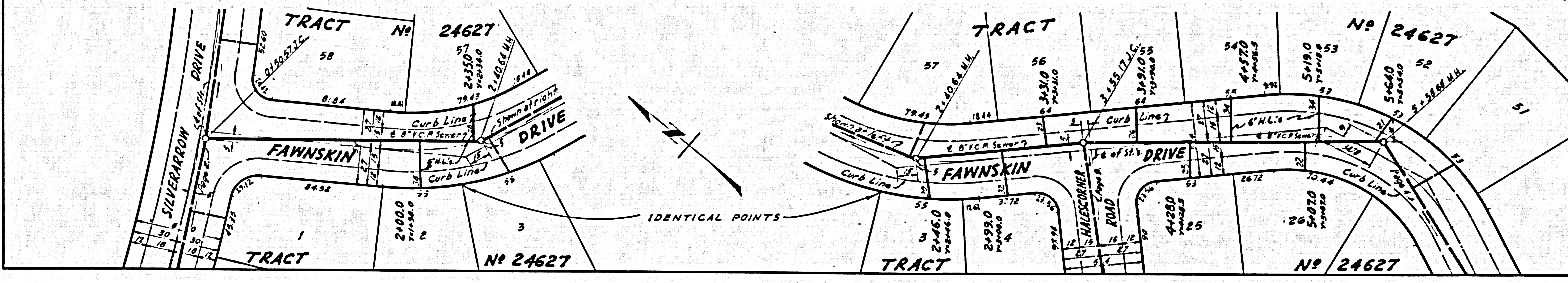
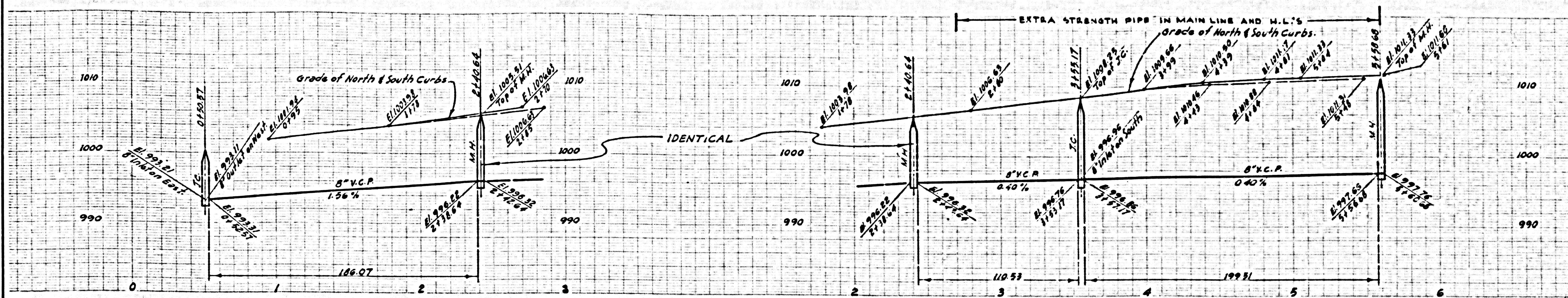
DOUBLE SCALE
NO CHARGE FOR CONNECTIONS



TRACT 24627

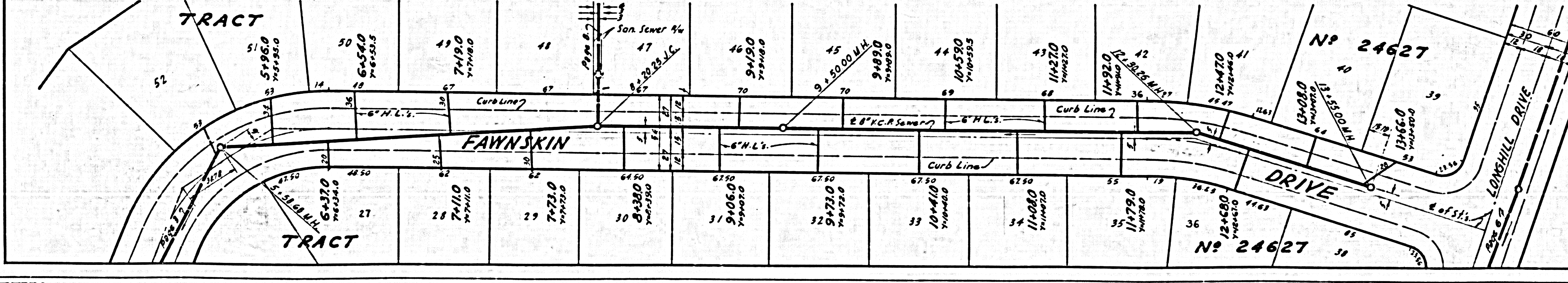
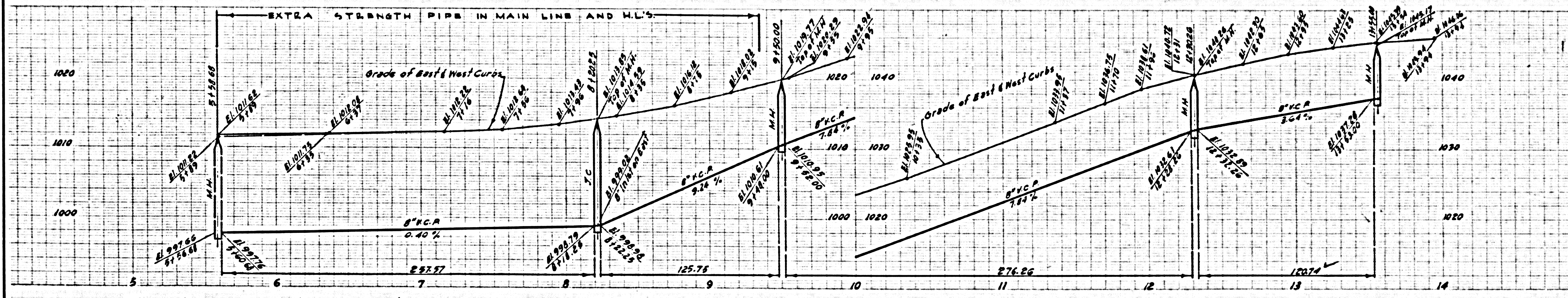
DOUBLE SCALE
NO CHARGE FOR CONNECTIONS

27857



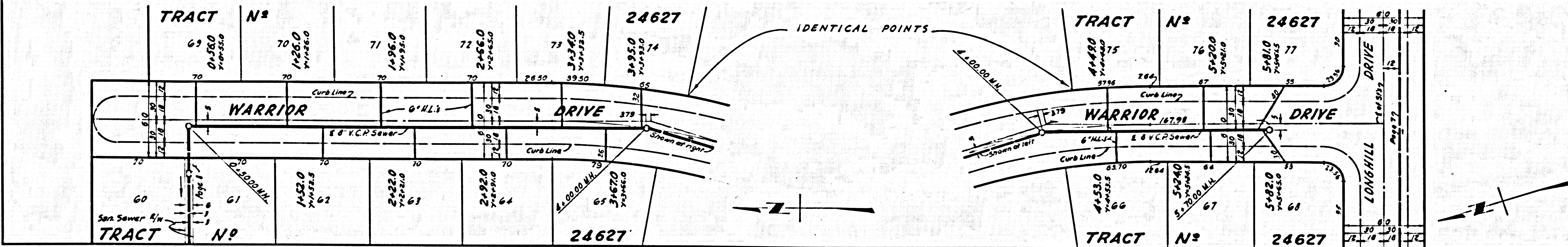
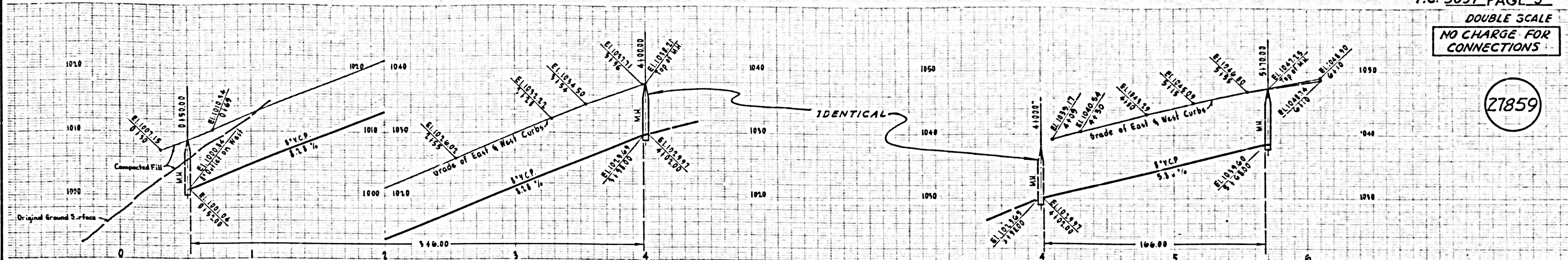
DOUBLE SCALE
NO CHARGE FOR CONNECTIONS

27858



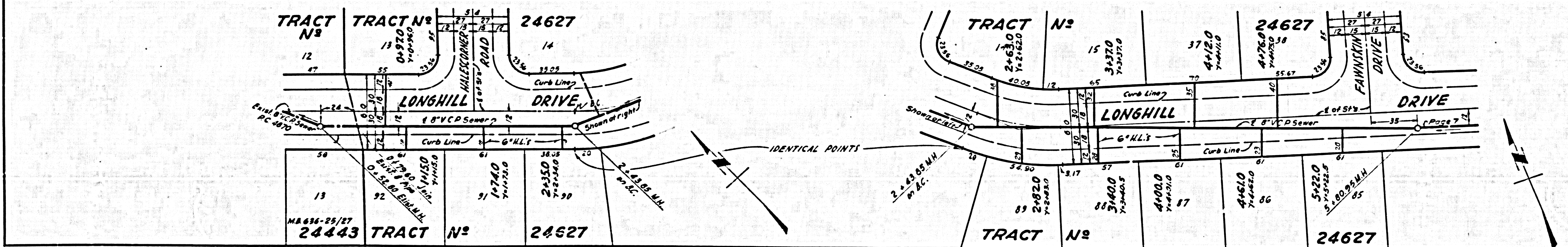
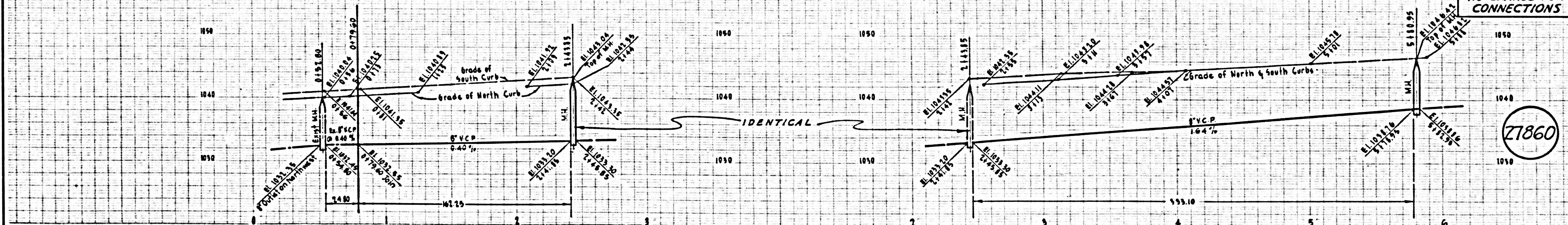
DOUBLE SCALE
NO CHARGE FOR
CONNECTIONS

(27859)



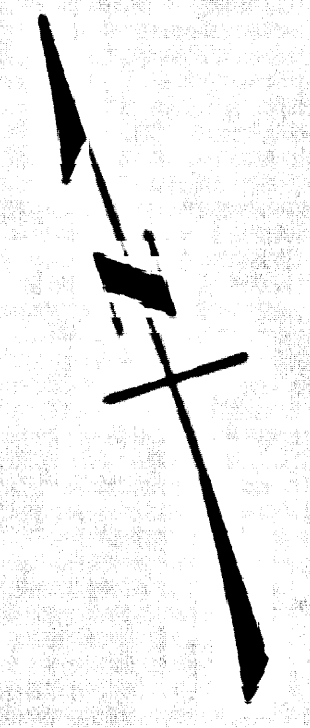
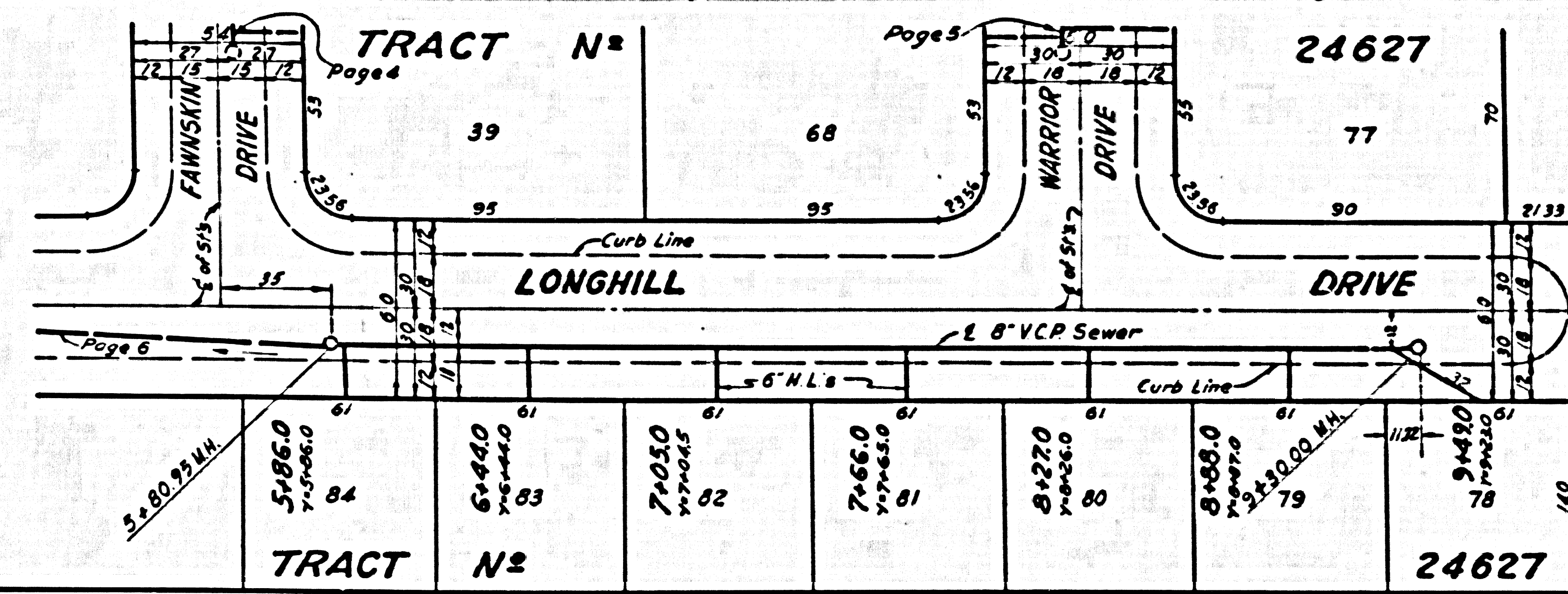
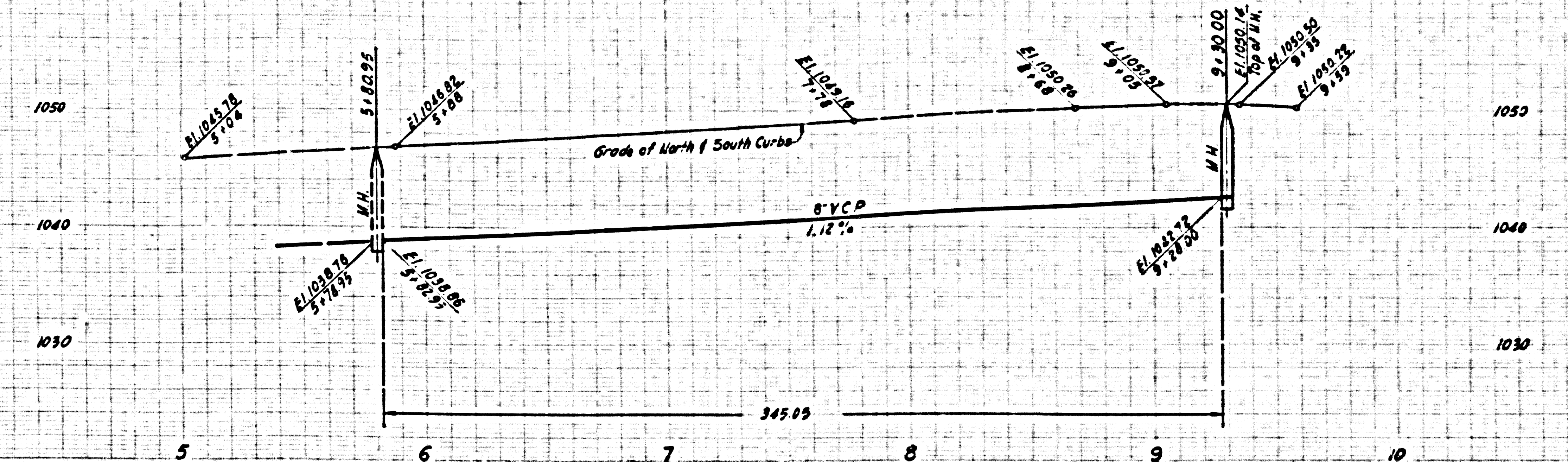
DOUBLE SCALE
NO CHARGE FOR
CONNECTIONS

(27860)

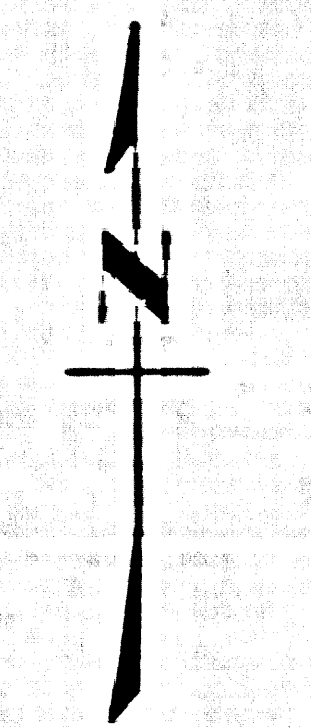
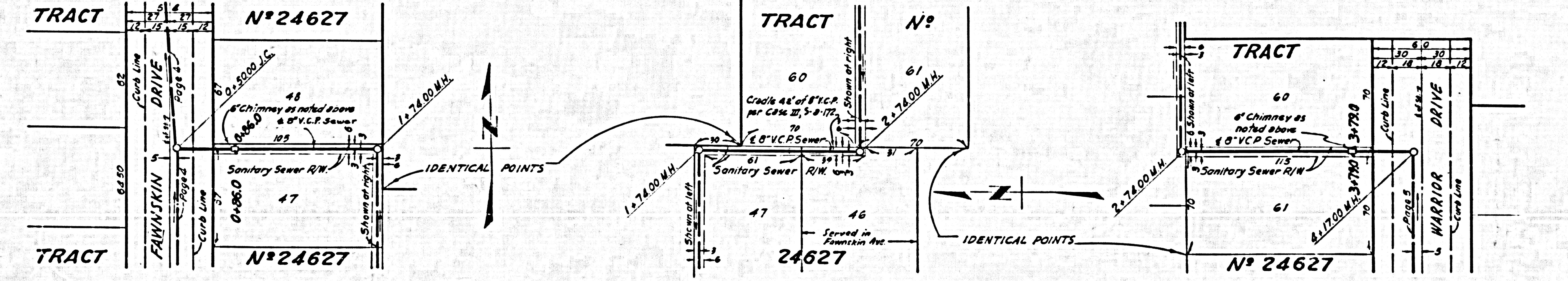
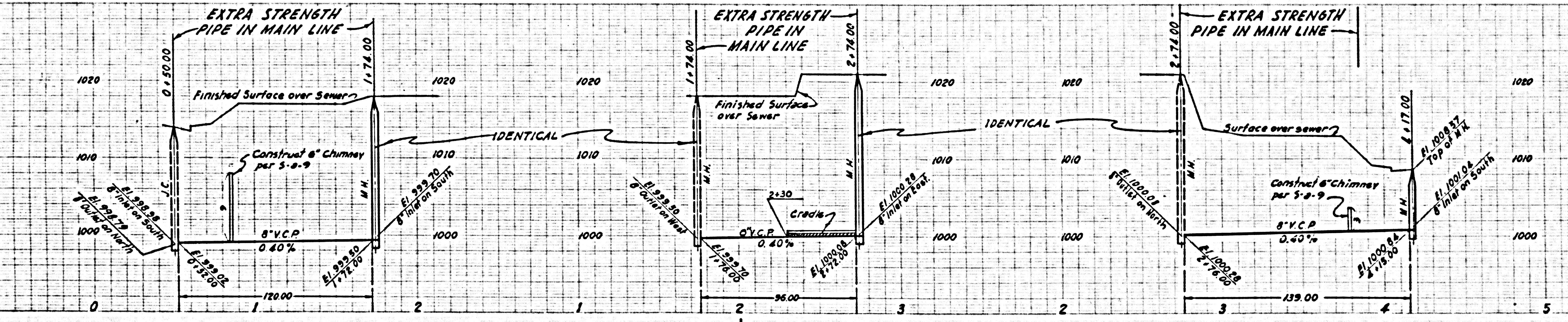


U.S.G. & G.E. CO. PLAN PRINTING DIVISION

27861



27862



27863

