

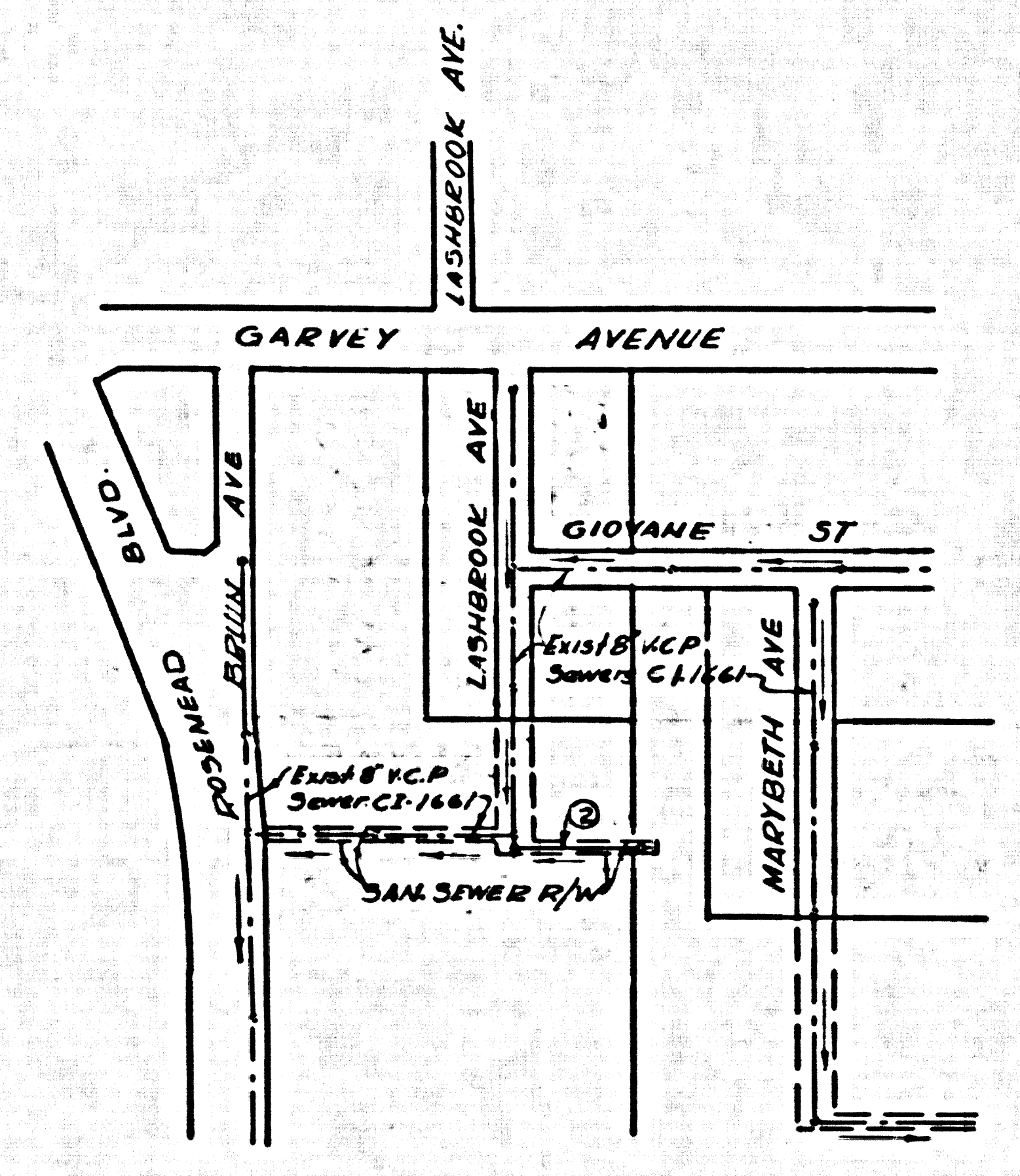
SOUTH EL MONTE BLDG. DIST. NO.5.04

PROFILE ALIGNMENT AND GRADE OF P.C. 5041
 SANITARY SEWERS PAGE 1
 J.N. 0665.54

TO BE CONSTRUCTED IN
 R/W EAST OF LASHBROOK AVENUE
 IN THE CITY OF SOUTH EL MONTE
 PRIVATE CONTRACT NO. 5041

W.S. 37
 1 SHEET 2 PAGES
 SCALE: 1" = 40' February 1959
 PREPARED IN THE OFFICES OF
TREADWELL ENGINEERING CORPORATION
 BY: *W. J. Tumbull* REG. C. E. NO. 419
 FOR LEGEND SEE PLAN NO. S-A-64

26,992



INDEX MAP
 P.C. N° 5041
 SCALE 1" = 300'

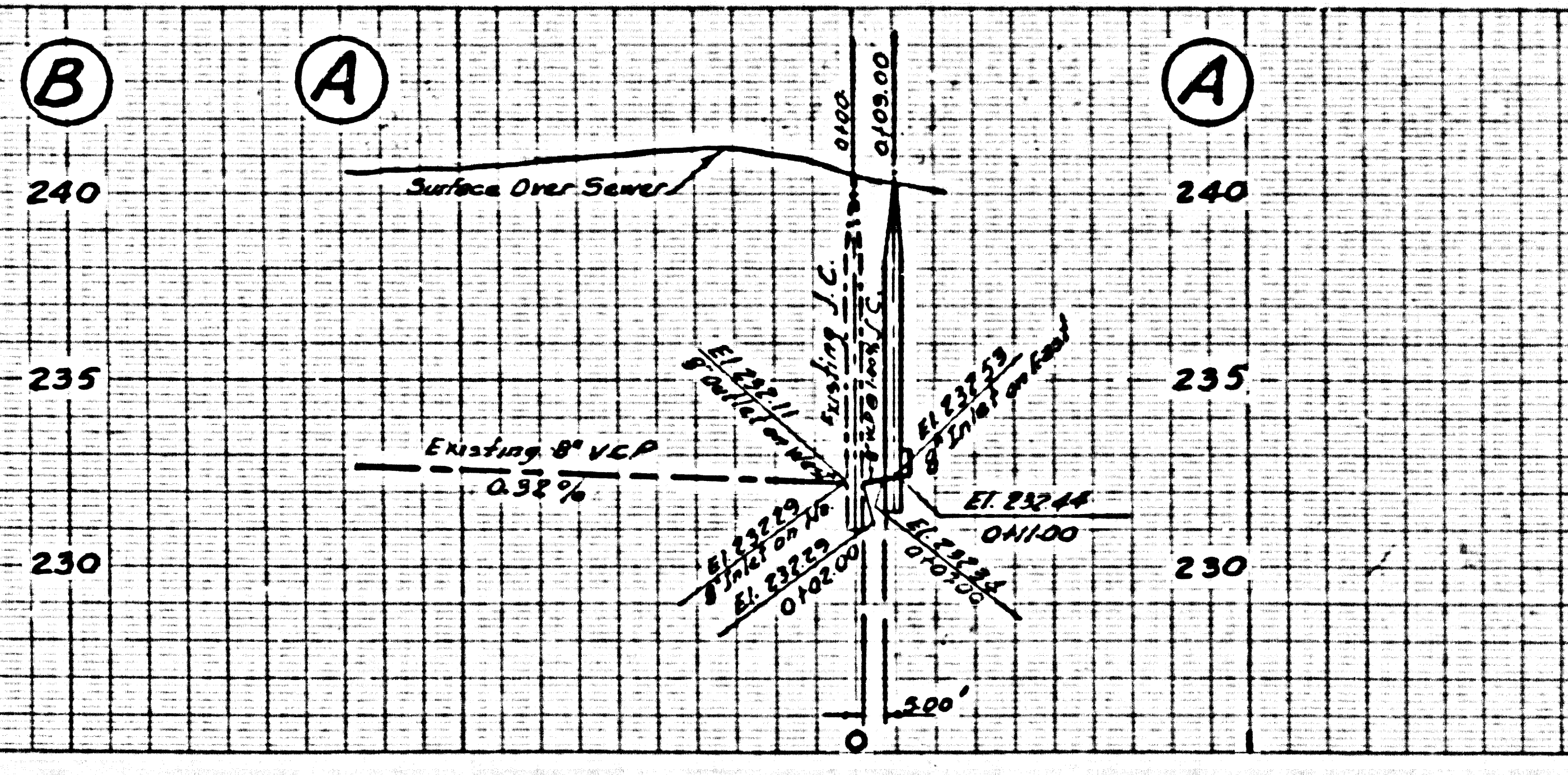
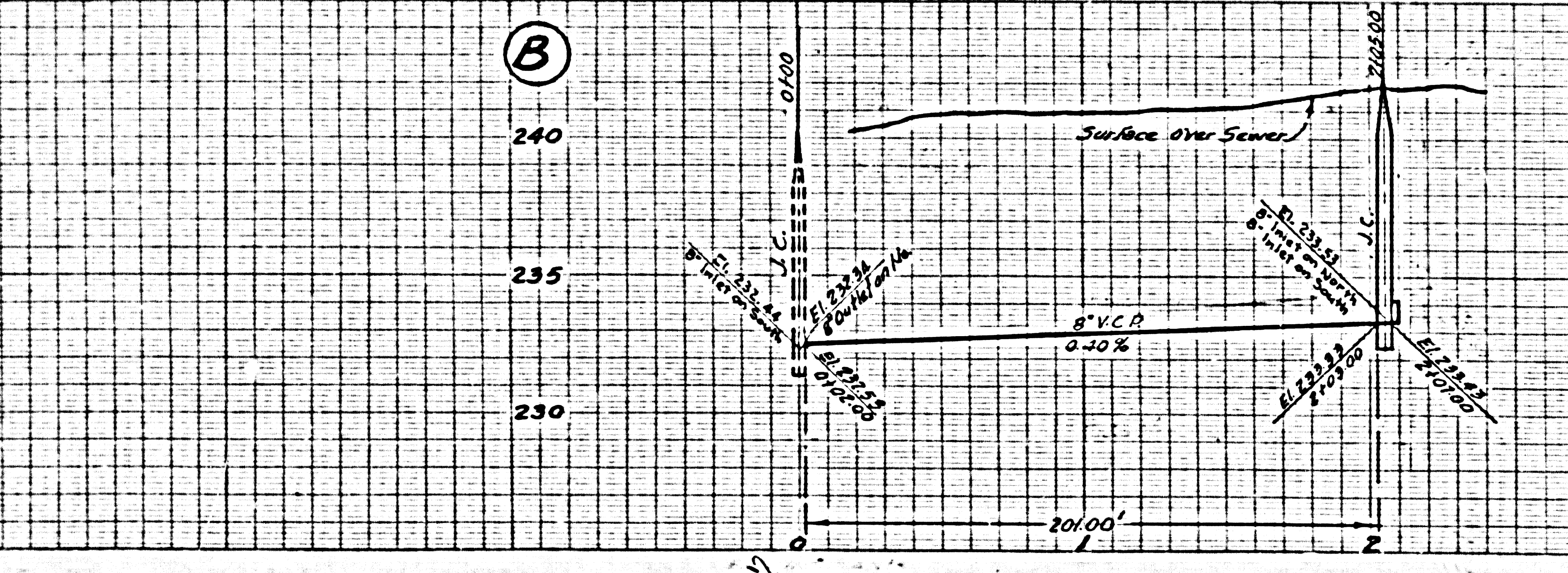
B.M. NE-361 Elev 241.663 C.S.F.B. 1728 pg. 233
 LASHBROOK Ave. East side 230'± South of Giovane St.
 Bolt Spk. in S.W. cor. conc. drive to house N° 2702

- NOTES
1. PROVIDE STAKES ON THE PROPERTY LINE OR PROPERTY LINES PRODUCED AT RIGHT ANGLES TO THE SEWER LINE AT THE CENTER LINE OF EACH MANHOLE.
 2. NO REPRESENTATIVE OF THE CITY ENGINEER WILL SURVEY OR LAY OUT ANY PORTION OF THE WORK.
 3. THE OWNER OR HIS AUTHORIZED REPRESENTATIVE SHALL FURNISH THE CITY ENGINEER WITH GRADE SHEETS AND STATIONING FOR ALL HOUSE LATERALS AND T-BRANCHES AND SHALL PROVIDE STAKES FOR THEM AT THEIR PROPER LOCATIONS WITH STATIONING PLAINLY MARKED. ANY CHANGE IN LOCATION SHALL BE REQUESTED BY THE OWNER OR HIS REPRESENTATIVE.
 4. THE PRIVATE ENGINEER SHALL FURNISH THE HOUSE LATERAL DEPTH AT THE PROPERTY LINE BELOW THE TOP OF CURB ELEVATION FOR EACH HOUSE LATERAL ON THE GRADE SHEET.
 5. NO REVISIONS SHALL BE MADE IN THESE PLANS WITHOUT THE APPROVAL OF THE CITY ENGINEER.
 6. USE STANDARD MANHOLE FRAMES AND COVERS, S-117.
 7. USE STANDARD STRENGTH PIPE.
 8. RESURFACE ALL TRENCH WITHIN PAVED AREA TO MEET L.A. COUNTY ROAD DEPT. OR CALIF. STATE HIGHWAY REQUIREMENTS IN ACCORDANCE WITH PERMITS.
 9. ENCASE FOUR FEET OF SEWER AT POINTS OF INTERFERENCE WITH POLES, CASE III, S-172.
 10. ALL STRUCTURES SHALL BE BRICK SEWER STRUCTURES, S-104, EXCEPT AS NOTED.
 11. Pth ALLOWABLE LEAKAGE TEST USE FORMULA NO. 2 - SPCS, SEC. 34.
 12. MANHOLE TOPS IN UNIMPROVED RIGHTS-OF-WAY TO BE SIX INCHES ABOVE FINISHED GRADE.
 13. THE CONTRACTOR SHALL NOTIFY THE CONSTRUCTION & STORM DRAIN DIVISION BY TELEPHONE, MADISON 9-4749, EXT. 346, AT LEAST TWENTY-FOUR HOURS BEFORE STARTING ANY WORK UNDER THIS CONTRACT.
 14. USE JOINT COMPOUND, WEDGE-LOCK, OR SPEED-SEAL FOR ALL VCP JOINTS PER SPCS, SECS. 33, 36 & 48. IF GROUND WATER IS ENCOUNTERED, USE METAL FORMS OF GAS-TIGHT, WEDGE-LOCK, OR SPEED-SEAL PER SPCS, SECS. 34, 36 & 48.

NO CHARGE FOR CONNECTIONS
A. Justice 2-19-59

DESIGNS TO WHICH THIS IMPROVEMENT IS TO BE CONSTRUCTED ARE SHOWN ON PLANS AND PROFILE. GRADE POINTS FOR TOP OF CURBS, CENTER LINE OF STREETS, OR CENTER LINE OF ALLEYS ARE SHOWN BY CIRCLES ON PROFILES. AT ALL POINTS BETWEEN DESIGNATED POINTS THE GRADE SHALL BE ESTABLISHED SO AS TO CONFORM TO A STRAIGHT LINE DRAWN BETWEEN SAID DESIGNATED POINTS.
 ELEVATIONS ARE IN FEET ABOVE U.S.C. & G.S. MEAN LEVEL. DATUM OF 1929.
 THIS DRAWING AND THE DATA HEREON ARE HEREBY MADE A PART OF THE SPECIFICATIONS.
 WORK SHALL BE CONSTRUCTED ACCORDING TO SPECIFICATIONS ON FILE IN THE OFFICE OF THE CITY ENGINEER AND SHALL BE PROSECUTED ONLY IN THE PRESENCE OF THE CITY ENGINEER.
 BEFORE WORK CAN BE STARTED, THE CONTRACTOR SHALL:
 - MAKE A DEPOSIT WITH THE CITY ENGINEER, ROOM 324 PAN AMERICAN BUILDING, 220 BROADWAY SUFFICIENT TO COVER THE COST OF CONSTRUCTION INSPECTION AND RECORD PLANS.
 - APPROVAL OF THIS PLAN BY THE CITY ENGINEER, MANHOLE, POLE CONSULTANTS, A REPRESENTATIVE AS TO THE ACCURACY OF THE LOCATION OF OR THE EXISTENCE OR NON-EXISTENCE OF ANY UNDERGROUND UTILITY PIPE, OR STRUCTURE WITHIN THE LIMITS OF THIS PROJECT. THIS NOTE APPLIES TO ALL PAGES.
 IF WORK IS TO BE DONE IN A STATE HIGHWAY, A PERMIT MUST BE OBTAINED FROM THE STATE OF CALIFORNIA, DIVISION OF HIGHWAYS, 128 SOUTH SHORE STREET.
CITY OF SOUTH EL MONTE
 APPROVED, JOHN A. LAMBE, CITY ENGINEER APPROVED, C. R. CONANTON, CIVIL ENGINEER
 BY: *A. H. Swales* ASST. SANITATION ENGINEER BY: *C. R. Conanton* OFFICE ENGINEER
 CHECKED BY: *W. J. Tumbull* 2-27-59
 OFFICE OF CITY ENGINEER, REG. C. E. NO. 419

P.C. 5041 PAGE 2



NO CHARGE FOR CONNECTIONS
 26,993

