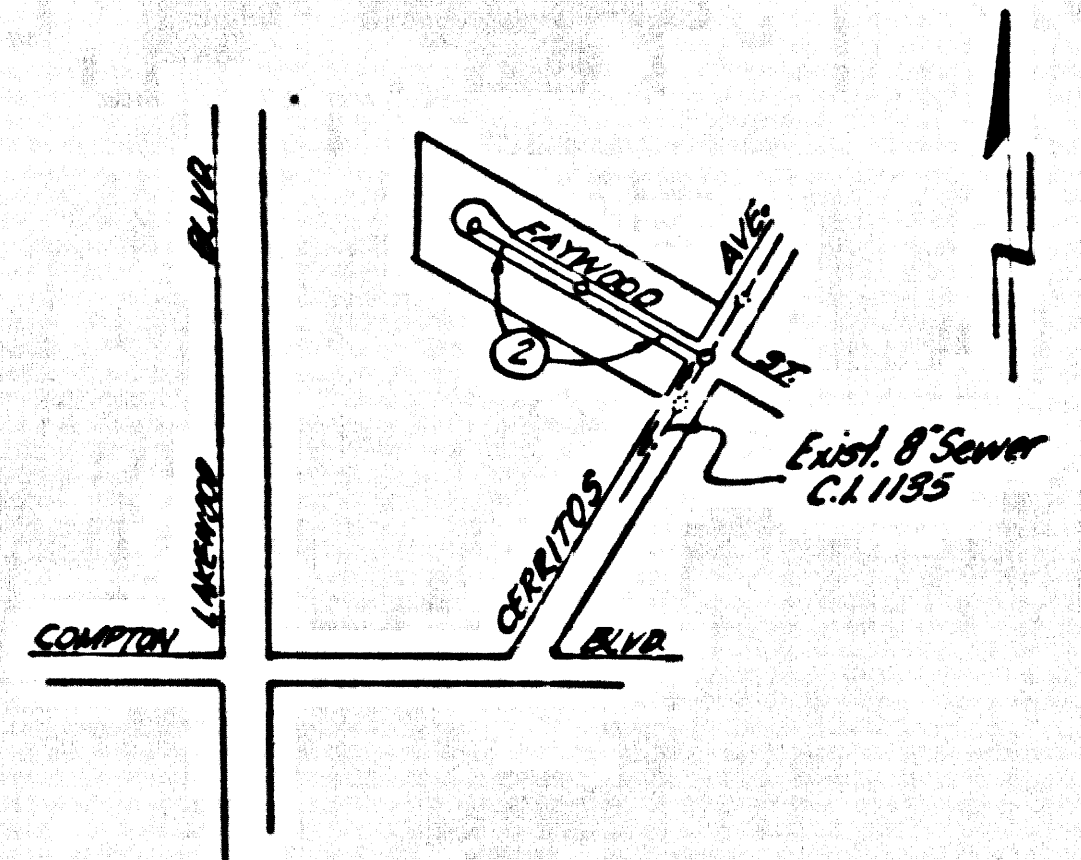


SY 1412 El. 80.515 (1955 Ad)  
Lead & Bench Nail 2' S. of Ck. Ref. @  
S.E. Cor. of Heiner & Clark Ave.



INDEX MAP  
SCALE: 1"=600'

NO CHARGE FOR  
CONNECTIONS  
S. Dec. 16 3-18-59

BELLFLOWER BLDG. DIST. NO. 4.07

- NOTES:
1. PROVIDE STAKES ON THE PROPERTY LINE OR PROPERTY LINES PRODUCED AT RIGHT ANGLES TO THE SEWER LINE AT THE CENTER LINE OF EACH MANHOLE.
  2. NO REPRESENTATIVE OF THE CITY ENGINEER WILL SURVEY OR LAY OUT ANY PORTION OF THE WORK.
  3. THE OWNER OR HIS AUTHORIZED REPRESENTATIVE SHALL FURNISH THE CITY ENGINEER WITH GRADE SHEETS AND STATIONING FOR ALL HOUSE LATERALS AND Y BRANCHES AND SHALL PROVIDE STAKES FOR THEM AT THEIR PROPER LOCATIONS WITH STATIONING PLAINLY MARKED. ANY CHANGE IN LOCATION SHALL BE SECURED BY WRITING BY THE OWNER OR HIS REPRESENTATIVE.
  4. THE PRIVATE ENGINEER SHALL FURNISH THE HOUSE LATERAL DEPTH AT THE PROPERTY LINE BELOW THE TOP OF CURB ELEVATION FOR EACH HOUSE LATERAL ON THE GRADE SHEET.
  5. NO REVISIONS SHALL BE MADE IN THESE PLANS WITHOUT THE APPROVAL OF THE CITY ENGINEER.
  6. USE STANDARD MANHOLE FRAMES AND COVERS, S-117.
  7. USE STANDARD STRENGTH PIPE.
  8. USE CEMENT MORTAR OR "WEDGE-LOCK" OR "SPEED-SEAL" FOR ALL V.C.P. JOINTS PER S.P.C.S., S.P.C.S. 36 & 46.
  9. RESURFACE ALL TRENCH WITHIN PAVED AREA TO MEET L.A. COUNTY ROAD DEPT. OR CALIF. STATE HIGHWAY REQUIREMENTS IN ACCORDANCE WITH PERMITS.
  10. INCASE FOUR FEET OF SEWER AT POINTS OF INTERFERENCE WITH POLE, CASE III, S-172.
  11. HOUSE LATERALS TO BE CONSTRUCTED WITH 1/2" DIA. RISE PIPE TO PROPERTY LINE.
  12. ALL STRUCTURES SHALL BE BRICK SEWER STRUCTURES, S-194.
  13. FOR ALLOWABLE LEAKAGE TEST USE FORMULA NO. 1, S.P.C.S., S.P.C. 34.
  14. MANHOLE TOPS IN UNIMPROVED RIGHTS-OF-WAY TO BE SIX INCHES ABOVE FINISHED GRADE.
  15. THE CONTRACTOR SHALL NOTIFY THE CONSTRUCTION & STORM DRAIN DIVISION BY TELEPHONE, HANDBOOK 6-474, EXT. 342, AT LEAST TWENTY-FOUR HOURS BEFORE STARTING ANY WORK UNDER THIS CONTRACT.

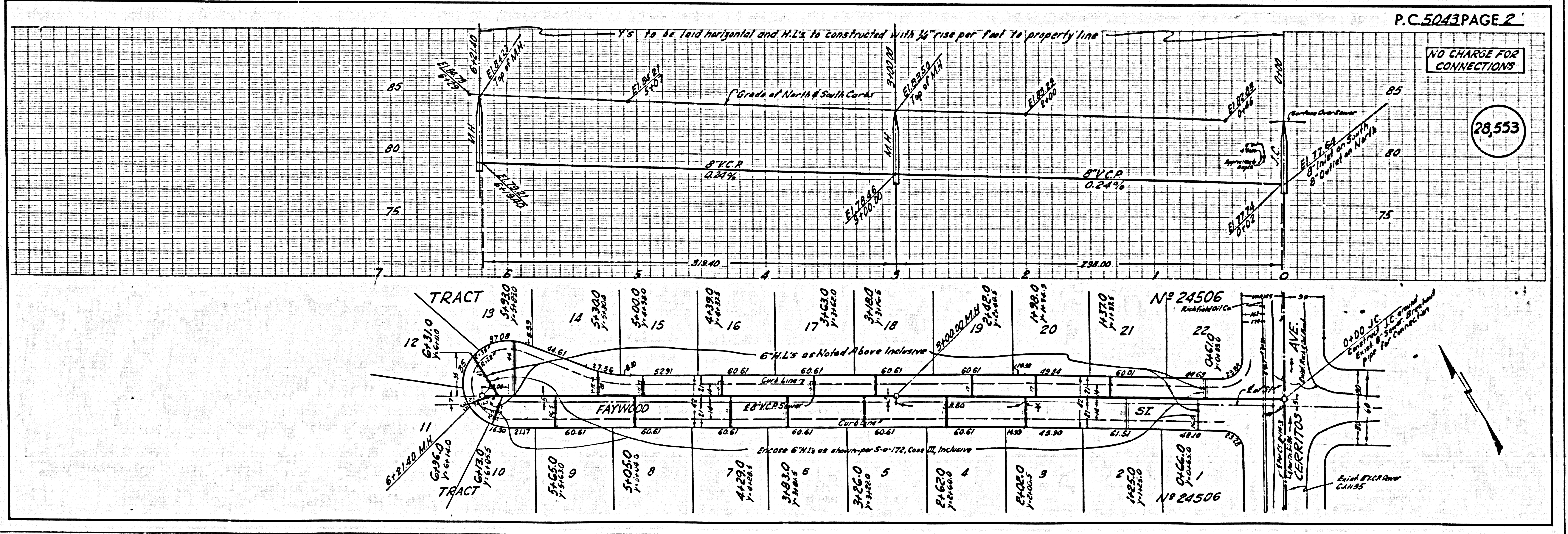
PROFILE ALIGNMENT AND GRADE OF P.C. 5043  
SANITARY SEWERS PAGE 1  
TO BE CONSTRUCTED IN  
TRACT N° 24506 28,552

PRIVATE CONTRACT NO. 5043  
W.S. 33  
1 SHEETS, 2 PAGES  
SCALE: HORIZ. 1"=60' VERT. 1"=6' JAN. 1959  
PREPARED BY THE OFFICES OF  
OLSON SURVEYING SERVICE  
BY *Frank A. Olsson*  
REG. C. E. NO. 2420  
FOR LEGEND SEE PLAN NO. S-A-64

NOTE:  
GRADES TO WHICH THIS IMPROVEMENT IS TO BE CONSTRUCTED ARE SHOWN ON PLANS AND PROFILES. GRADE POINTS FOR TOP OF CURB, CENTER LINE OF STREETS, OR CENTER LINE OF ALLEYS ARE SHOWN BY CIRCLES ON PROFILES. AT ALL POINTS BETWEEN DESIGNATED POINTS THE GRADE SHALL BE ESTABLISHED SO AS TO CONFORM TO A STRAIGHT LINE DRAWN BETWEEN SAID DESIGNATED POINTS.  
ELEVATIONS ARE IN FEET ABOVE U.S.C. & G.S. SEA LEVEL DATUM OF 1929.  
THE DRAWING AND THE DATA HEREON ARE HEREBY MADE A PART OF THE SPECIFICATIONS.  
WORK SHALL BE CONSTRUCTED ACCORDING TO SPECIFICATIONS ON FILE IN THE OFFICE OF THE CITY ENGINEER AND SHALL BE PROSECUTED ONLY IN THE PRESENCE OF THE CITY ENGINEER.  
BEFORE WORK CAN BE STARTED, THE CONTRACTOR MUST OBTAIN A PERMIT TO EXCAVATE IN CITY STREETS FROM THE L.A. COUNTY ROAD DEPT., DISTRICT OFFICE NO. 1 AND MAKE A REPORT WITH THE CITY OF BELLFLOWER, 1829 BELLFLOWER AVENUE, BELLFLOWER, CALIF. REGARDING THE COST OF CONSTRUCTION INSPECTION AND RECORD PLANS.  
ANNUAL OF THIS PLAN BY THE CITY OF BELLFLOWER DOES NOT CONSTITUTE A REPRESENTATION AS TO THE ACCURACY OF THE LOCATION OR OF THE EXISTENCE OR NON-EXISTENCE OF ANY UNDERGROUND UTILITY PIPE OR STRUCTURE WITHIN THE LIMITS OF THIS PROJECT. THIS NOTE APPLIES TO ALL PAGES.  
IF WORK IS TO BE DONE IN A STATE HIGHWAY, A PERMIT MUST BE OBTAINED FROM THE STATE OF CALIFORNIA, DIVISION OF HIGHWAYS, 130 SOUTH SPRING STREET.

CITY OF BELLFLOWER, CALIFORNIA  
APPROVED, JOHN A. LAMBE, CITY ENGINEER  
APPROVED, C.E. COMPTON, CHIEF ENGINEER  
BY *Frank A. Olsson* SANITATION ENGINEER BY *W. R. Thompson* OFFICE ENGINEER  
CHECKED BY *Earl D. ...* 4-1-59  
OFFICE OF CITY ENGINEER, REG. C. E. NO. 9466

SUBMITTED BY *John L. ...* 3-19-59  
L.A. COUNTY RECORDS DIVISION REC. 10787



P.C. 5043 PAGE 2

NO CHARGE FOR  
CONNECTIONS

28,553