

WHITTIER BLDG. DIST. NO. 11

PROFILE ALIGNMENT AND GRADE OF **P.C. 5047**
SANITARY SEWERS PAGE **1**
 TO BE CONSTRUCTED IN J.N. 0350.14

RIGHT OF WAY NORTH OF CERES AVENUE

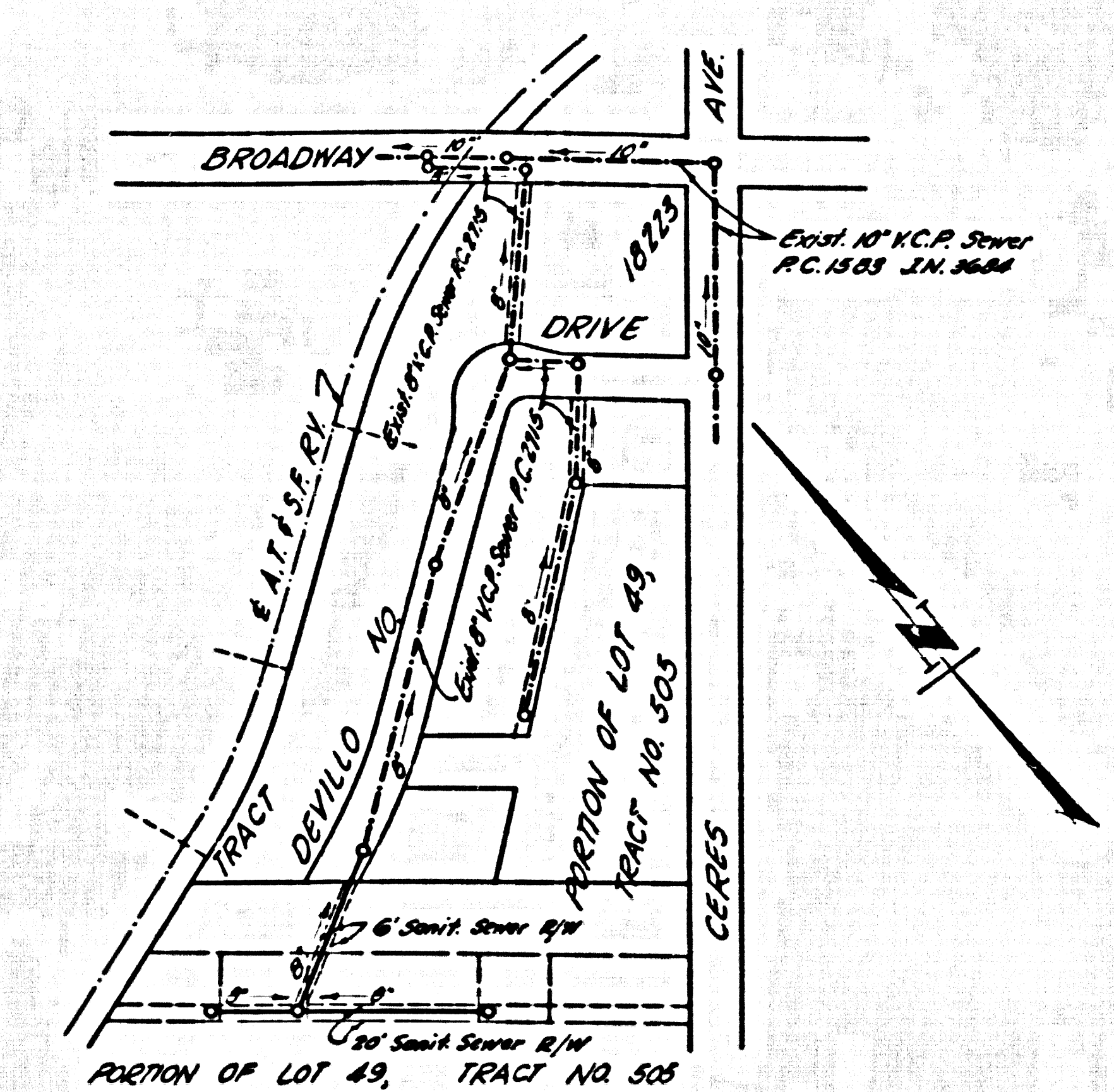
PRIVATE CONTRACT NO. 5047
 JOB NUMBER 0850.14
 W.S. 34

1 SHEET, 2 PAGES
 SCALE: VERT. 1"=4' HORIZ. 1"=40'
 FEB. 1959

PREPARED IN THE OFFICES OF
KEMMERER ENGR. CO. INC.

By Robert R. Flinn
 REG. C. E. NO. 1349

FOR LEGEND SEE PLAN NO. S-A-64



INDEX MAP
 P.C. 5047 Scale: 1"=200'

NO CHARGE FOR CONNECTIONS
 E. Bonds 3-17-59

- NOTE:**
- PROVIDE STAKES ON THE PROPERTY LINE OR PROPERTY LINES PRODUCED AT RIGHT ANGLES TO THE SEWER LINE AT THE CENTER LINE OF EACH MANHOLE.
 - NO REPRESENTATIVE OF THE COUNTY ENGINEER WILL SURVEY OR LAYOUT ANY PORTION OF THE WORK.
 - THE OWNER OR HIS AUTHORIZED REPRESENTATIVE SHALL FURNISH THE COUNTY ENGINEER WITH GRADE SHEETS AND STATIONING FOR ALL HOUSE LATERALS AND Y BRANCHES AND SHALL PROVIDE STAKES FOR THEM AT THEIR PROPER LOCATIONS WITH STATIONING PLAINLY MARKED. ANY CHANGE IN LOCATION SHALL BE REQUESTED IN WRITING BY THE OWNER OR HIS REPRESENTATIVE.
 - NO REVISIONS SHALL BE MADE IN THESE PLANS WITHOUT THE APPROVAL OF THE COUNTY ENGINEER.
 - USE STANDARD MANHOLE FRAMES AND COVERS, S-A-117.
 - USE STANDARD STRENGTH PIPE.
 - USE CEMENT MORTAR, "WET SET" JOINTS, OR "DRESS-SEAL" FOR ALL UNIFIED CLAY PIPE JOINTS PER S.P.C.'S SEC. 36-148.
 - REINFORCE ALL TRENCH WITHIN PAVED AREA TO MEET L. A. COUNTY ROAD DEPT., OR CALIF. STATE HIGHWAY DEPT. REQUIREMENTS IN ACCORDANCE WITH PERMITS.
 - ENCASE FOUR FEET OF SEWER AT POINTS OF INTERFERENCE WITH POLES, S-A-172, CASE III.
 - HOUSE LATERALS TO BE CONSTRUCTED WITH INVERTS AT PROPERTY LINE 6 FEET BELOW CURB GRADE EXCEPT AS NOTED.
 - ALL STRUCTURES SHALL BE BRICK WITH 1 MANHOLE, S-A-194.
 - FOR ALLOWABLE LEAKAGE TEST USE FORMULA NO. 1 S.P.C.'S, SEC. 34.
 - MANHOLE TOPS IN UNIMPROVED RIGHTS-OF-WAY TO BE 4" ABOVE FINISHED GRADE.

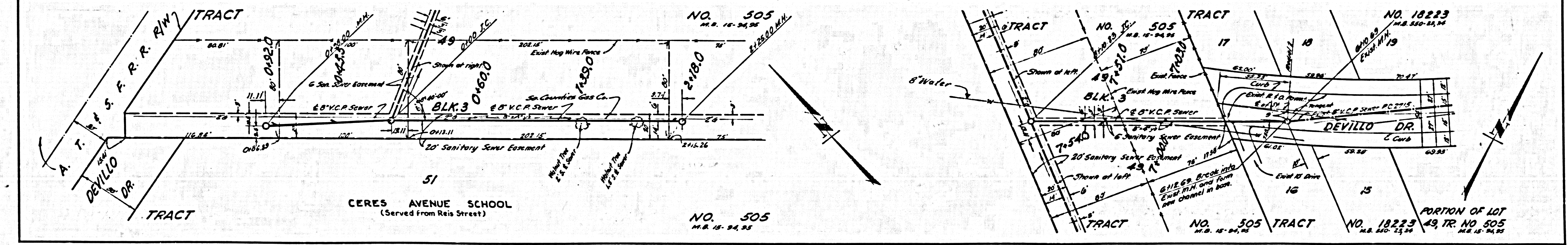
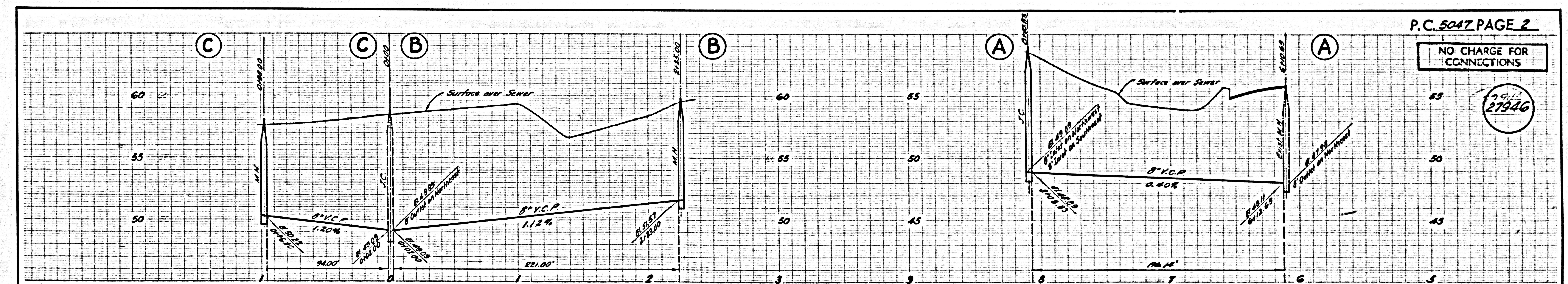
B.M. 5X 1293 L. & T. N. Co. Bridge #785
 2.10' from E. end (Santa Fe Quad 1955) Elev. 163.480.

NOTE:
 THE CONTRACTOR SHALL NOTIFY THE CONSTRUCTION AND SURVEY DIVISION BY TELEPHONE, MADISON 9-4747, EX. 357, AT LEAST 24 HOURS BEFORE STARTING ANY WORK UNDER THIS CONTRACT.

NOTE:
 GRADES TO WHICH THIS IMPROVEMENT IS TO BE CONSTRUCTED ARE SHOWN ON PLANS AND PROFILES. GRADE POINTS FOR TOP OF CURB, CENTER LINE OF STREETS, OR CENTER LINE OF ALLEYS ARE SHOWN BY CIRCLES ON PROFILES. AT ALL POINTS BETWEEN DESIGNATED POINTS THE GRADE SHALL BE ESTABLISHED SO AS TO COMFORM TO A STRAIGHT LINE BETWEEN SAID DESIGNATED POINTS.
 ELEVATIONS ARE IN FEET ABOVE U.S.C. & G.S. MEAN SEA LEVEL DATUM OF 1929.
 THIS DRAWING AND THE DATA HEREON ARE HEREBY MADE A PART OF THE SPECIFICATIONS.
 BEFORE WORK CAN BE STARTED, THE CONTRACTOR MUST OBTAIN A PERMIT TO EXCAVATE IN COUNTY STREETS FROM THE L. A. COUNTY ROAD DEPT., ONE-CENTRAL BLDG., AND MAKE A REPORT WITH THE COUNTY ENGINEER, ROOM 524 SAN AMERICAN BLDG., 233 SO. BROADWAY SUFFICIENT TO COVER THE COST OF CONSTRUCTION INSPECTION AND RECORD PLANS.
 APPROVAL OF THIS PLAN BY THE COUNTY OF LOS ANGELES DOES NOT CONSTITUTE A REPRESENTATION AS TO THE ACCURACY OF THE LOCATION OF OR THE EXISTENCE OR NON-EXISTENCE OF ANY UNDERGROUND UTILITY PIPE, OR STRUCTURE WITHIN THE LIMITS OF THIS PROJECT. THIS NOTE APPLIES TO ALL PAGES.
 IF WORK IS TO BE DONE IN A STATE HIGHWAY, A PERMIT MUST BE OBTAINED FROM THE STATE OF CALIFORNIA, DIVISION OF HIGHWAYS, 128 SOUTH SPRING STREET.

COUNTY OF LOS ANGELES, CALIFORNIA
 APPROVED, JOHN A. LAMBE, COUNTY ENGINEER
 APPROVED, C.E. COMPTON, CHIEF ENGINEER
 BY Robert R. Flinn SANITATION ENGINEER
 BY W. C. Williams OFFICE ENGINEER
 CHECKED BY W. C. Williams
 OFFICE OF COUNTY ENGINEER, REG. C. E. NO. 2436

SUBMITTED BY: John L. Eaton 5-21-59
 LOS CERRITOS REGIONAL ENGINEER, REG. C.E. NO. 3871



P.C. 5047 PAGE 2

NO CHARGE FOR CONNECTIONS

27946