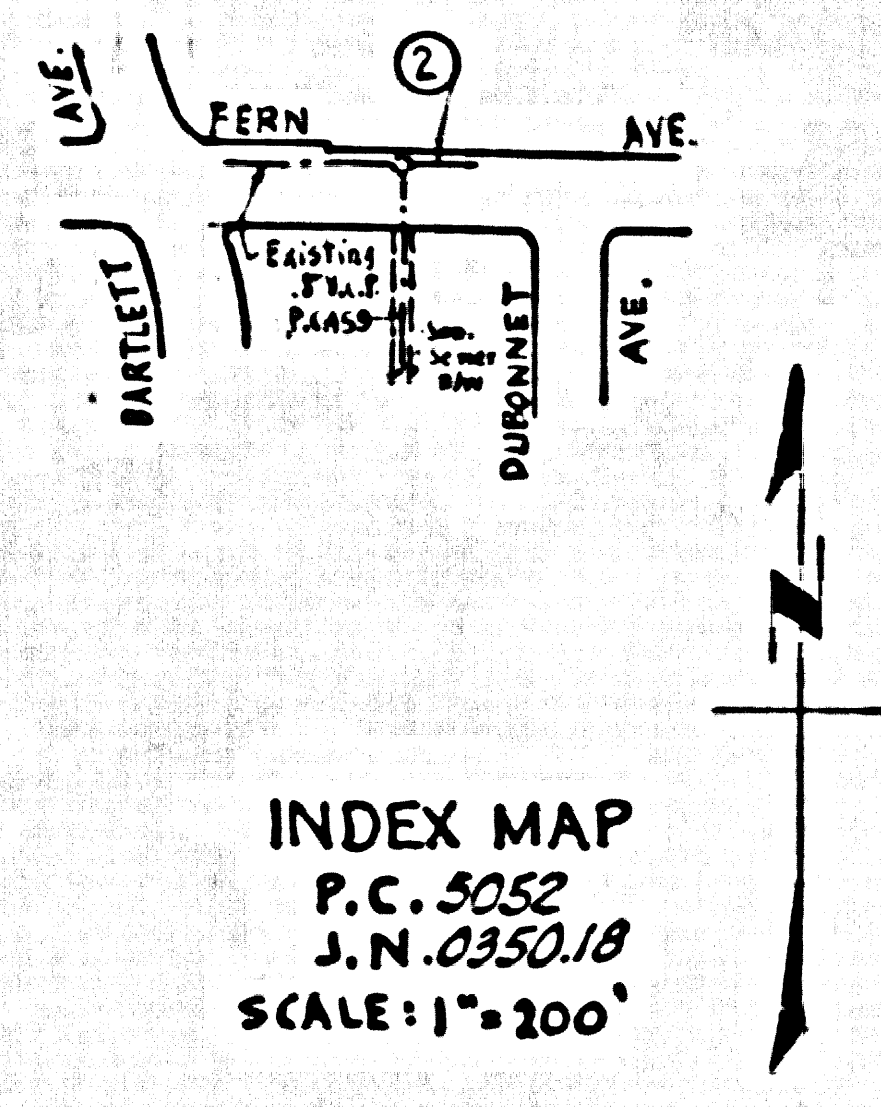


S.M. 5V-4096 Elev. 244.640  
 L&T. ±1.5' W. of End of Cb. Ret. @ S.E.  
 Cor. E. Fern Ave. + WALNUT GROVE AVE.  
 Whittier Quad. - 1955



NO CHARGE FOR CONNECTIONS  
*B.M. Caldwell 2-1-55*

TEMPLE CITY BLDG. DIST. NO. 5

- NOTES
1. PROVIDE STAKES ON THE PROPERTY LINE OR PROXIMITY LINES PRODUCED AT RIGHT ANGLES TO THE SEWER LINE AT THE CENTER LINE OF EACH MANHOLE.
  2. NO REPRESENTATIVE OF THE COUNTY ENGINEER WILL SURVEY OR LAY OUT ANY PORTION OF THE WORK.
  3. THE OWNER OR HIS AUTHORIZED REPRESENTATIVE SHALL FURNISH THE COUNTY ENGINEER WITH GRADE SHEETS AND STATIONING FOR ALL HOUSE LATERALS AND Y BRANCHES AND SHALL PROVIDE STAKES FOR THEM AT THEIR PROPER LOCATIONS WITH STATIONING PLAINLY MARKED. ANY CHANGE IN LOCATION SHALL BE REQUESTED IN WRITING BY THE OWNER OR HIS REPRESENTATIVE.
  4. THE PRIVATE ENGINEER SHALL FURNISH THE HOUSE LATERAL DEPTH AT THE PROPERTY LINE BELOW THE TOP OF CURB ELEVATION FOR EACH HOUSE LATERAL ON THE GRADE SHEET.
  5. NO DIVERSIONS SHALL BE MADE IN THESE PLANS WITHOUT THE APPROVAL OF THE COUNTY ENGINEER.
  6. USE STANDARD MANHOLE FRAMES AND COVERS, S-117.
  7. USE STANDARD STRENGTH PIPE.
  8. USE CEMENT MORTAR OR "WIDE JOINT" OR "SPREAD BEAD" FOR ALL V.C.P. JOINTS PER SPEC. SECT. 25 & 26.
  9. RESURFACE ALL TRENCH WITHIN PAVED AREA TO MEET L.A. COUNTY ROAD DEPT. OR CALIF. STATE HIGHWAY REQUIREMENTS IN ACCORDANCE WITH PERMITS.
  10. ENCASE FOUR FEET OF SEWER AT POINTS OF INTERFERENCE WITH POLES. SEE 25, S-172.
  11. HOUSE LATERALS TO BE CONSTRUCTED WITH 64" RISE PER FOOT TO PROPERTY LINE AND 1/4% to be laid horizontal.
  12. ALL STRUCTURES SHALL BE BRICK SEWER STRUCTURES, S-104.
  13. FOR ALLOWABLE LEAKAGE TEST USE FORMULA NO. 1 SPEC. SEC. 24.
  14. MANHOLE TOPS IN UNIMPROVED RIGHTS-OF-WAY TO BE SIX INCHES ABOVE FINISHED GRADE.
  15. THE CONTRACTOR SHALL NOTIFY THE CONSTRUCTION & STREAN DEPARTMENT BY TELEPHONE, MARSHEN 5-2741, EXT. 241, AT LEAST TWENTY-FOUR HOURS BEFORE STARTING ANY WORK UNDER THIS CONTRACT.

PROFILE ALIGNMENT AND GRADE OF P.C. 5052  
 SANITARY SEWERS PAGE 1  
 TO BE CONSTRUCTED IN J.N. 0350.18

FERN AVENUE (26,755)

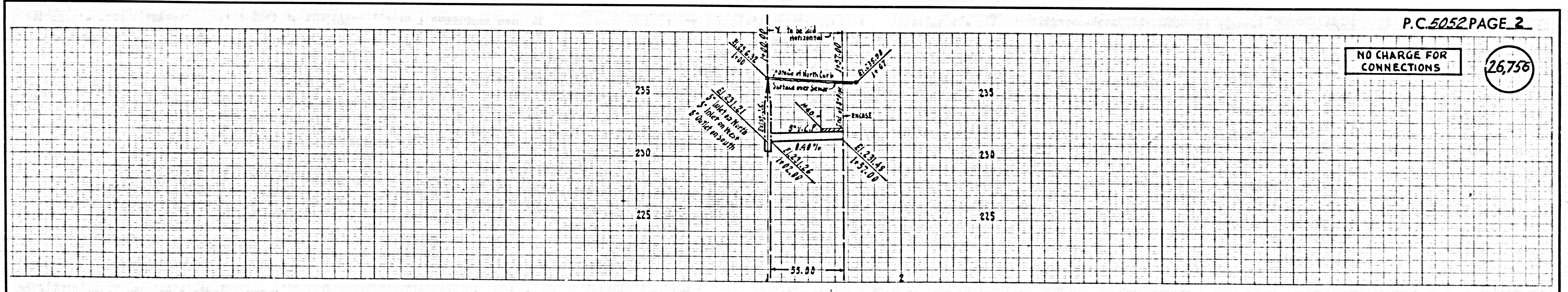
PRIVATE CONTRACT NO. 5052  
 JOB NUMBER 0350.18  
 W.S. 37

1 SHEET, 2 PAGES  
 SCALE: VERT. 1" = 4' HORIZ. 1" = 10' FEBRUARY, 1959  
 PREPARED IN THE OFFICES OF

*J. Ramirez Jr.*  
 P.C. NO. 26724  
 FOR LEGEND SEE PLAN NO. S-A-64

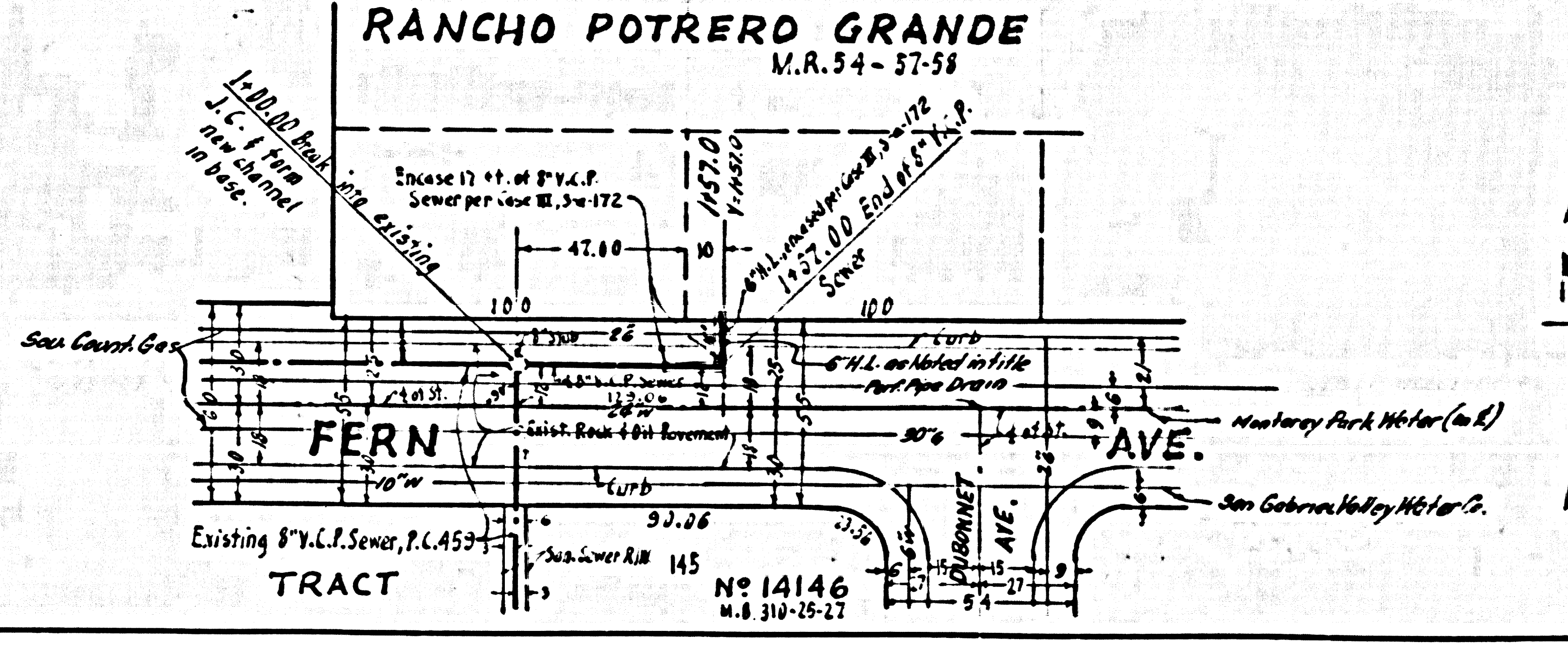
NOTES  
 GRADES TO WHICH THIS IMPROVEMENT IS TO BE CONSTRUCTED ARE SHOWN ON PLANS AND PROFILES. GRADE POINTS FOR TOP OF CURB, CENTER LINE OF STREETS, OR CENTER LINE OF ALLEYS ARE SHOWN BY CIRCLES ON PROFILES AT ALL POINTS BETWEEN DESIGNATED POINTS. THE GRADE SHALL BE REFINISHED SO AS TO CONFORM TO A STRAIGHT LINE BETWEEN SAID DESIGNATED POINTS.  
 ELEVATIONS ARE IN FEET ABOVE U.S.C. & G.S. SEA LEVEL DATUM OF 1929.  
 THIS DRAWING AND THE DATA HEREON ARE HEREBY MADE A PART OF THE SPECIFICATIONS.  
 WORK SHALL BE CONSTRUCTED ACCORDING TO SPECIFICATIONS ON FILE IN THE OFFICE OF THE COUNTY ENGINEER AND SHALL BE PROSECUTED ONLY IN THE PRESENCE OF THE COUNTY ENGINEER.  
 BEFORE WORK CAN BE STARTED THE CONTRACTOR MUST OBTAIN A PERMIT TO EXCAVATE IN COUNTY STREETS FROM THE L.A. COUNTY ROAD DEPT., DISTRICT OFFICE NO. 1 AND MAKE A DEPOSIT WITH THE COUNTY ENGINEER, ROOM 324 FROM AMERICAN BUILDING, 732 SO. BROADWAY SUFFICIENT TO COVER THE COST OF CONSTRUCTION INSPECTION AND RECORD PLANS.  
 APPROVAL OF THIS PLAN BY THE COUNTY OF LOS ANGELES DOES NOT CONSTITUTE A REPRESENTATION AS TO THE ACCURACY OF THE LOCATION OF OR THE EXISTENCE OR NON-EXISTENCE OF ANY UNDERGROUND UTILITY PIPE, OR STRUCTURE WITHIN THE LIMITS OF THE PROJECT. THIS NOTE APPLIES TO ALL PAGES.  
 IF WORK IS TO BE DONE IN A STATE HIGHWAY, A PERMIT MUST BE OBTAINED FROM THE STATE OF CALIFORNIA, DIVISION OF HIGHWAYS, 126 SOUTH BRIDGE STREET.

COUNTY OF LOS ANGELES, CALIFORNIA  
 APPROVED, JOHN A. LAMBE, COUNTY ENGINEER  
 APPROVED, C.L. LEWIS, CHIEF ENGINEER  
 CO. SAN DIST. NO. 15  
 BY *J. H. Hughes* SANITATION ENGINEER BY *L. P. Matthews* OFFICE ENGINEER  
 CHECKED BY *J. V. Onda* 2-18-59  
 OFFICE OF COUNTY ENGINEER, 200 S. W. 100  
 SUBMITTED *N. F. Brander* SAN GABRIEL VALLEY REGIONAL ENGINEER



NO CHARGE FOR CONNECTIONS  
 (26,756)

P.C. 5052 PAGE 2



U.S.G.P. 1946 2ND EDITION, CALIF. PLAIN PAPER SHEET NO. 1