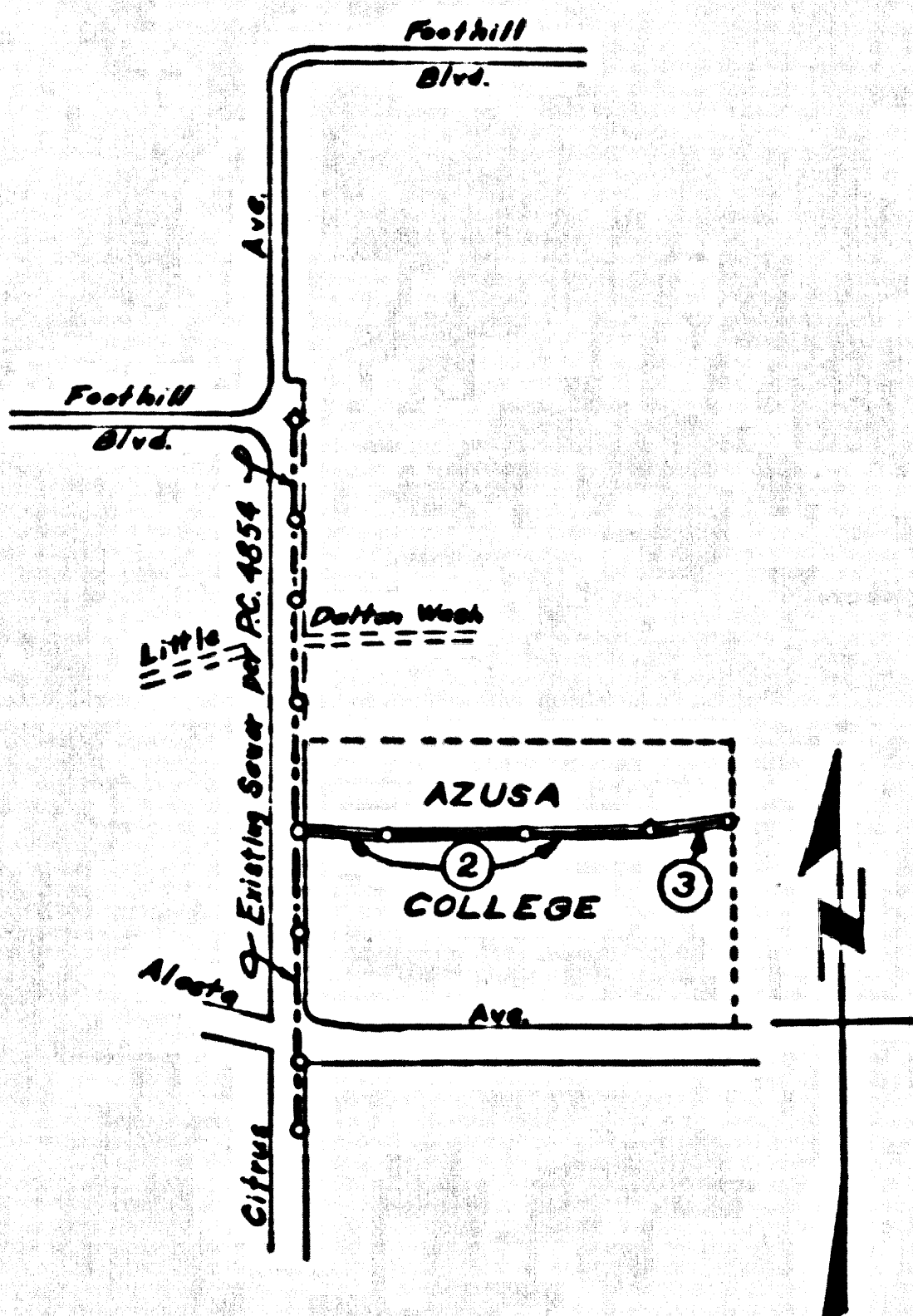


# SAN DIMAS BLDG. DIST. NO. 10

PROFILE ALIGNMENT AND GRADE OF P.C. 5060  
SANITARY SEWERS PAGE 1  
TO BE CONSTRUCTED IN J.N. 0350.26  
R/W N/O ALOSTA AVE. (28,066)

L.A. COUNTY SUR. MON. NEAR & INT.  
OF CITRUS AVE & FOOTHILL BLVD. TO  
THE WEST. S.G. 1171  
ELEV. 625.688 - BASELINE - 1955



- NOTE:
  1. PROVIDE STAKES ON THE PROPERTY LINE OR PROPERTY LINES PRODUCED AT RIGHT ANGLES TO THE SEWER LINE AT THE CENTER LINE OF EACH MANHOLE.
  2. NO REPRESENTATIVE OF THE COUNTY ENGINEER WILL SURVEY OR LAY OUT ANY PORTION OF THE WORK.
  3. THE OWNER OR HIS AUTHORIZED REPRESENTATIVE SHALL FURNISH THE COUNTY ENGINEER WITH GRADE SHEETS AND STATIONING FOR ALL HOUSE LATERALS AND BRANCHES AND SHALL PROVIDE STAKES FOR THEM AT THESE PROPER LOCATIONS WITH STATIONING PLAINLY MARKED. ANY CHANGE IN LOCATION SHALL BE REQUESTED IN WRITING BY THE OWNER OR HIS REPRESENTATIVE.
- 16. Standard Specifications dated May 15, 1953 apply in the construction of this project.

## PRIVATE CONTRACT NO. 5060

W.S. 47  
2 SHEETS, 3 PAGES  
SCALE: VERT. 1"=4'  
HORIZ. 1"=40'  
FEBRUARY 1959  
PREPARED IN THE OFFICES OF

*G.J. Jennings*  
REG. NO. 7158  
FOR LEGEND SEE PLAN NO. S-A-64

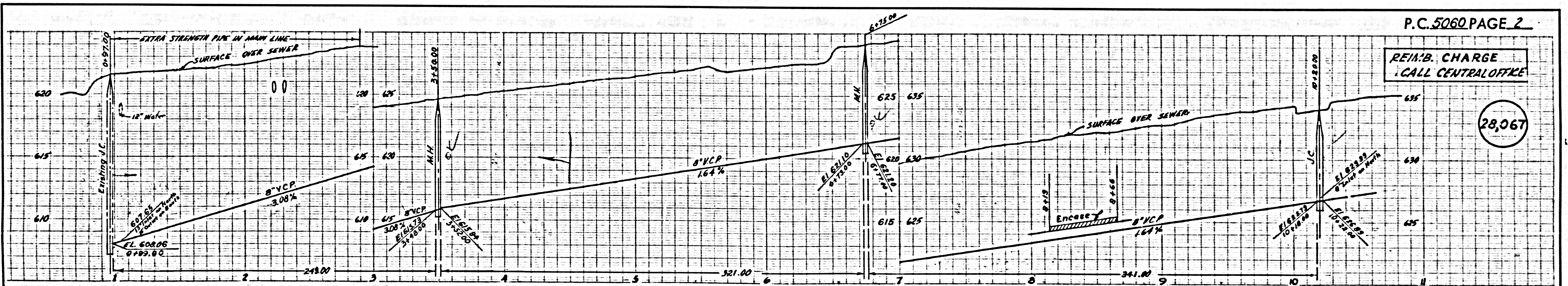
NOTE:  
GRADES TO WHICH THIS IMPROVEMENT IS TO BE CONSTRUCTED ARE SHOWN ON PLANS AND PROFILES. GRADE POINTS FOR TOP OF CURBS, CENTER LINE OF STREETS, OR CENTER LINE OF ALLEYS ARE SHOWN BY CIRCLES ON PROFILES. AT ALL POINTS BETWEEN DESIGNATED POINTS THE GRADE SHALL BE ESTABLISHED SO AS TO CONFORM TO A STRAIGHT LINE BETWEEN SAID DESIGNATED POINTS.  
ELEVATIONS ARE IN FEET ABOVE U.S.C. & G.S. MEAN LEVEL UNLESS OTHERWISE SPECIFIED.  
THE DRAWING AND THE DATA HEREON ARE HEREBY MADE A PART OF THE SPECIFICATIONS.  
WORK SHALL BE CONSTRUCTED ACCORDING TO SPECIFICATIONS ON FILE IN THE OFFICE OF THE COUNTY ENGINEER AND SHALL BE PROSECUTED ONLY IN THE PRESENCE OF THE COUNTY ENGINEER.  
BEFORE WORK CAN BE STARTED, THE CONTRACTOR MUST OBTAIN A PERMIT TO EXCAVATE IN COUNTY STREETS FROM THE L.A. COUNTY ROAD DEPT., DISTRICT OFFICE NO. 1 AND MAKE A DEPOSIT WITH THE COUNTY ENGINEER, ROOM 328 FROM AMERICAN BUILDING, 230 SO. BROADWAY SUFFICIENT TO COVER THE COST OF CONSTRUCTION INSPECTION AND RECORD PLANS.  
APPROVAL OF THIS PLAN BY THE COUNTY OF LOS ANGELES DOES NOT CONSTITUTE A REPRESENTATION AS TO THE ACCURACY OF THE LOCATION OF OR THE EXISTENCE OR NON-EXISTENCE OF ANY UNDERGROUND UTILITY PIPE, OR STRUCTURE WITHIN THE LIMITS OF THE PROJECT THIS NOTE APPLIES TO ALL PAGES.  
IF WORK IS TO BE DONE IN A STATE HIGHWAY, A PERMIT MUST BE OBTAINED FROM THE STATE OF CALIFORNIA, DIVISION OF HIGHWAYS, 128 SOUTH SHIND STREET.

### COUNTY OF LOS ANGELES, CALIFORNIA

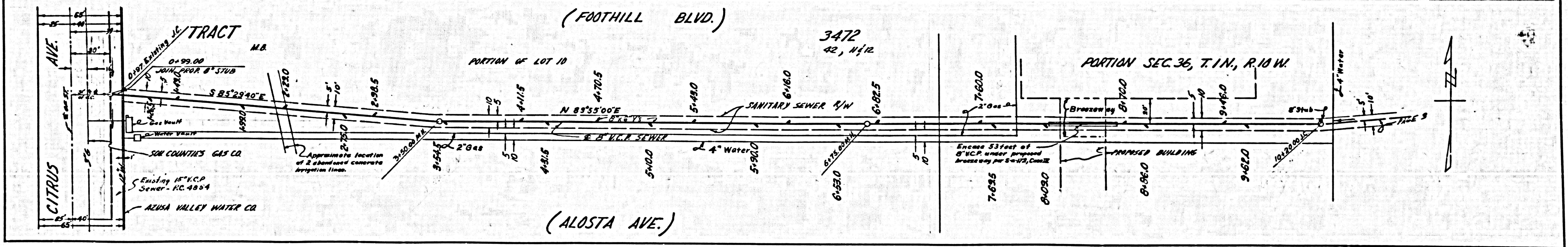
APPROVED, JOHN A. LAMBE, COUNTY ENGINEER  
BY *L.A. Hughes* SANITATION ENGINEER  
CHECKED BY *M. D. ...* OFFICE OF COUNTY ENGINEER, BUREAU OF SANITATION  
APPROVED, C.R. ... ENGINEER  
BY *C.P. ...* OFFICE ENGINEER

COLLECT CHARGES AS INDICATED  
*B.M. ...*  
ISSUE NO PERMITS UNTIL P.C. 4854 13 ACCEPTED

REVISION  
Move Outlet M.H. to 31' E of Citrus Avenue. Add 3" of sewer to change grade of Street from 3.185% to 3.08%. 7/5/59  
1:31-38.00 1:32-32.00 7/5/59  
APPROVED: "WORK BY YOUR ENGINEER" SEE SEE OR BLDG.

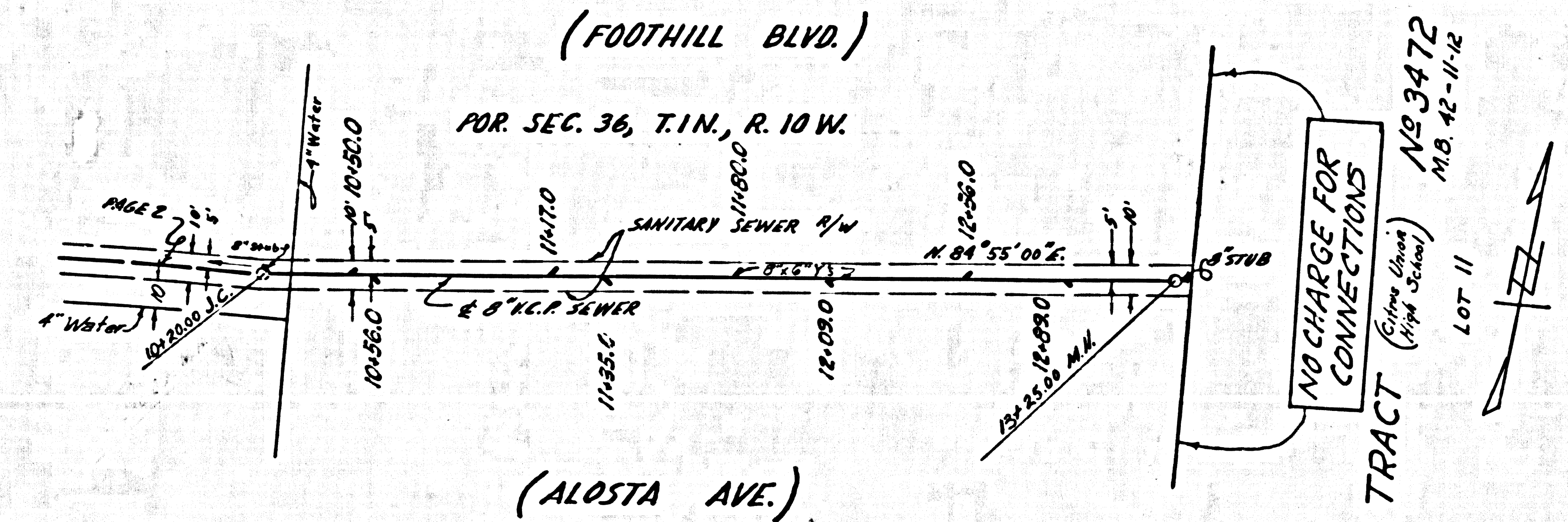
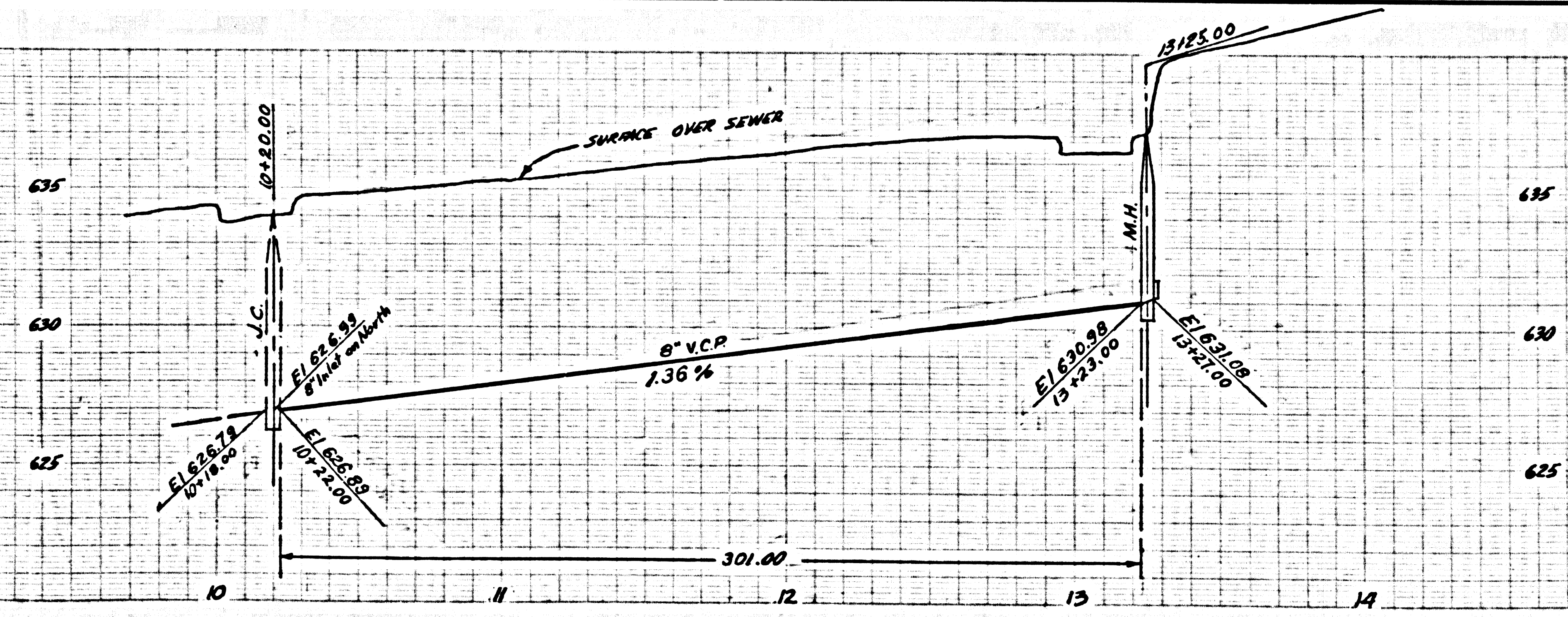


REIMB. CHARGE CALL CENTRAL OFFICE  
(28,067)



REIMB. CHARGE  
CALL CENTRAL OFFICE-4327  
AS NOTED

28,068



NO CHARGE FOR CONNECTIONS

TRACT  
(City of Phoenix)  
N 3472  
M.B. 42-11-12

LOT 11

