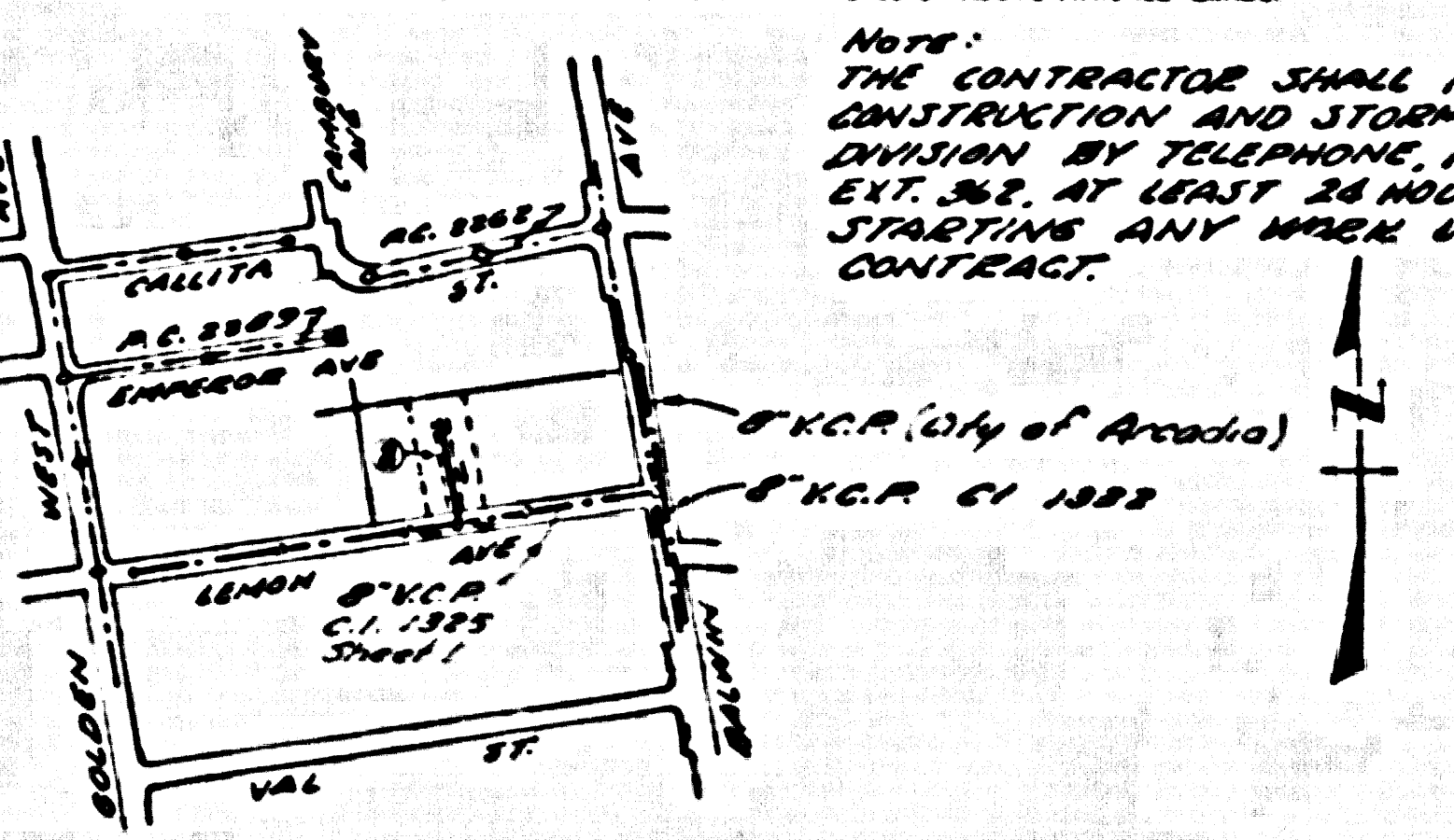


B.M. T.E. 285, Elev. 445.491, 1/31/1958, pg. 160
 B. Bluff Ave. and Lemay Ave., N.E. corner
 7' x 3' in C&G, T.N. of N. end of C.R.

TEMPLE CITY BLDG. DIST. NO. 5

- NOTES
- 1. FINISH GRADES OF THE PROPERTY LINE OR PROPERTY LINES PRODUCE AT RIGHT ANGLES TO THE SEWER LINE AT THE CENTER LINE OF EACH MANHOLE.
 - 2. NO REPRESENTATIVE OF THE COUNTY ENGINEER SHALL SURVEY OR LOCATE ANY PORTION OF THE WORK.
 - 3. THE OWNER OR HIS AUTHORIZED REPRESENTATIVE SHALL FURNISH THE COUNTY ENGINEER WITH GRADE SHEETS AND STATIONING FOR ALL HOUSE LATERALS AND Y BRANCHES AND SHALL PROVIDE STAKES FOR THEM AT THEIR PROPER LOCATIONS WITH STATIONING AND PLAINLY MARKED. ANY CHANGE IN LOCATION SHALL BE REQUESTED IN WRITING BY THE OWNER OR HIS REPRESENTATIVE.
 - 4. NO IMPROVEMENTS SHALL BE MADE IN THESE PLANS WITHOUT THE APPROVAL OF THE COUNTY ENGINEER.
 - 5. USE STANDARD MANHOLE FRAMES AND COVERS, S-A-117, EXCEPT AS NOTED.
 - 6. USE CEMENT MORTAR "B" "SPOUN-SEAL" FOR IMPROVED CLAY PIPE JOINTS PER S&A-117, S&A-118 AND S&A-119.
 - 7. RESURFACE ALL THINGS WITHIN PAVED AREA TO MEET L. & COUNTY ROAD DEPT., OR CALIF. STATE HIGHWAY DEPT. REQUIREMENTS IN ACCORDANCE WITH PERMITS.
 - 8. ENCASE FOUR FEET OF SEWER AT POINTS OF INTERFERENCE WITH POLES, S-A-178 CASE #2.
 - 9. HOUSE LATERALS TO BE CONSTRUCTED WITH INVERTS AT PROPERTY LINE - 9' FEET BELOW GRADE OF 6' OF R/W.
 - 10. ALL STRUCTURES SHALL BE BRICK SEWER STRUCTURES, S-A-104, EXCEPT AS NOTED.
 - 11. FOR ALLOWABLE LEAKAGE TEST USE FORMULA NO. 1, SPEC. SEC. III.
 - 12. MANHOLE RISE IN UNIMPROVED RIGHTS-OF-WAY TO BE 6" ABOVE FINISHED GRADE.



INDEX MAP SCALE 1"=600' NO. 5063

NO CHARGE FOR CONNECTIONS
E.M. Redwell 4-1-59

PROFILE ALIGNMENT AND GRADE OF P.C. 5063
 SANITARY SEWERS PAGE 1
 TO BE CONSTRUCTED IN J.N.0350.27

SANITARY SEWER R/W WEST OF BALDWIN AVENUE 27,722

PRIVATE CONTRACT NO. 5063

W.S. 44
 1 SHEET, 2 PAGES

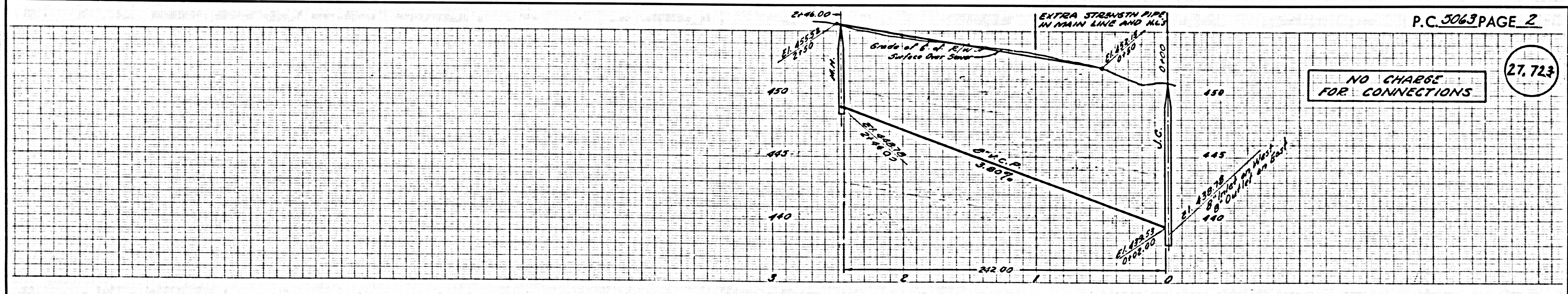
SCALE: HORIZ. 1"=40' VERT. 1"=4'
 FEBRUARY, 1959
 PREPARED IN THE OFFICES OF
 M.W. FINLEY CO.
 TEMPLE CITY, CALIF.
 BY *Leon W. Myers* REG. C. E. NO. 3111

FOR LEGEND SEE PLAN NO. S-A-64

NOTE: GRADES TO WHICH THIS IMPROVEMENT IS TO BE CONSTRUCTED ARE SHOWN ON PLANS AND PROFILES. GRADE POINTS FOR TOP OF CURB, CENTER LINE OF DRIVE, OR CENTER LINE OF ALLEYS ARE SHOWN BY CIRCLES OR SQUARES AT ALL POINTS BETWEEN DESIGNATED POINTS THE GRADE SHALL BE ESTABLISHED SO AS TO CONFORM TO A STRAIGHT LINE DRAWN BETWEEN SAID DESIGNATED POINTS. ELEVATIONS ARE IN FEET ABOVE U.S.C. & G.S. MEAN SEA LEVEL. THIS MEANING AND THE DATA HEREON ARE HEREBY MADE A PART OF THE SPECIFICATIONS. WORK SHALL BE CONSTRUCTED ACCORDING TO SPECIFICATIONS ON FILE IN THE OFFICE OF THE COUNTY ENGINEER AND SHALL BE PROSECUTED ONLY IN THE PRESENCE OF THE COUNTY ENGINEER. BEFORE WORK CAN BE STARTED, THE CONTRACTOR MUST OBTAIN A PERMIT TO EXCAVATE IN COUNTY SHERIFFS FROM THE L. & COUNTY ROAD DEPT. PER S&A-117 AND MAKE A DEPOSIT WITH THE COUNTY ENGINEER, ROOM 324 PAN AMERICAN BUILDING, 128 SO. HOLLYWAY STREET TO COVER THE COST OF CONSTRUCTION INSPECTION AND RECORD PLANS. APPROVAL OF THIS PLAN BY THE COUNTY OF LOS ANGELES DOES NOT CONSTITUTE A REPRESENTATION AS TO THE ACCURACY OF THE LOCATION OR OF THE EXISTENCE OR NON-EXISTENCE OF ANY UNDERGROUND UTILITY PIPE, OR STRUCTURE WITHIN THE LIMITS OF THIS PROJECT. THIS NOTE APPLIES TO ALL PAGES. IF WORK IS TO BE DONE IN A STATE HIGHWAY, A PERMIT MUST BE OBTAINED FROM THE STATE OF CALIFORNIA, DIVISION OF HIGHWAYS, 128 SOUTH BRIDGE STREET.

COUNTY OF LOS ANGELES, CALIFORNIA

APPROVED, JOHN A. LAMBE, COUNTY ENGINEER
 APPROVED, C.E. CAMPBELL, CHIEF ENGINEER
 BY *E.H. Hughes* BY *M. Woodman*
 CHECKED BY *R.K. Dink* 4-2-59
 OFFICE OF COUNTY ENGINEER, REG. C. E. NO. 5246
 SUBMITTED *N.F. Brown*
 SAN GABRIEL VALLEY REGIONAL ENGINEER



NO CHARGE FOR CONNECTIONS

27,723

P.C. 5063 PAGE 2

