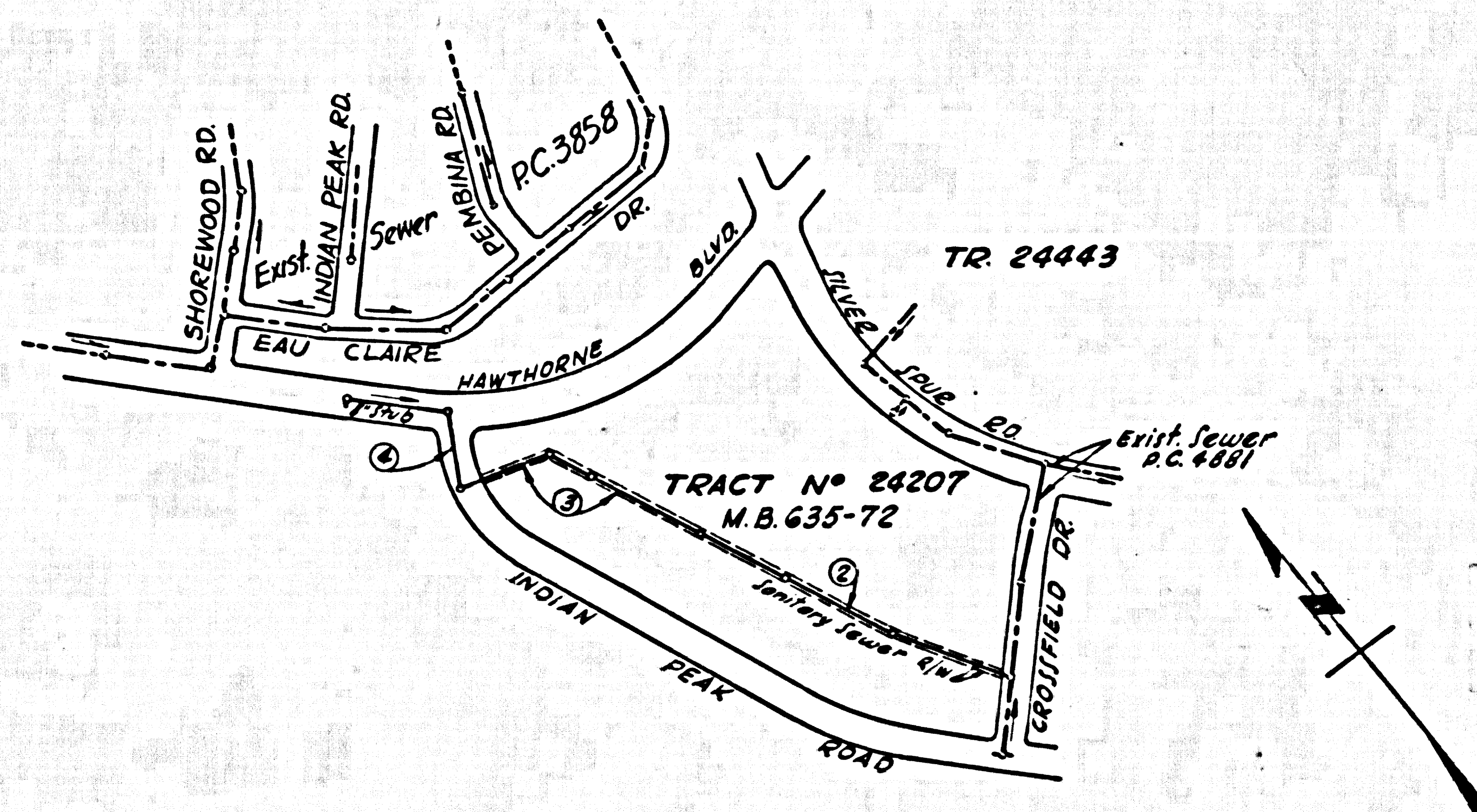


B.M. County Surveyor U.S.C.G.S. 1st. disc. stamped Q.796
 1946 set flush with ground 45.2' N. of E. Palat. Verdes
 Drive North 47.4' E. of Narbonne Ave. Elev. 353.518

Note: County Surveyor B.M. 36-2 Precise Survey
 1953 Adj. 355.593. Add 0.065 to all elevations shown
 hereon to agree with 1953 adjustment.



INDEX MAP
 R/W IN TRACT NO. 24207
 Scale 1" = 400'
 P.C. 5064

NO CHARGE FOR
 CONNECTIONS
 Arthur D. Kelly

LOMITA BLDG. DIST. NO. 71

- NOTES:
- PROVIDE STAKES ON THE PROPERTY LINE OR PROPERTY LINE PRODUCE AT RIGHT ANGLES TO THE SEWER LINE AT THE CENTER LINE OF EACH MANHOLE.
 - NO REPRESENTATIVE OF THE COUNTY ENGINEER WILL SURVEY OR LAY OUT ANY PORTION OF THE WORK.
 - THE OWNER OR HIS AUTHORIZED REPRESENTATIVE SHALL FURNISH THE COUNTY ENGINEER WITH GRADE SHEETS AND STATIONING FOR ALL HOUSE LATERALS AND Y BRANCHES AND SHALL PROVIDE STAKES FOR THE SAME AT THEIR PROPER LOCATIONS WITH STATIONING PLAINLY MARKED. ANY CHANGES IN LOCATION SHALL BE REQUESTED IN WRITING BY THE OWNER OR HIS REPRESENTATIVE.
 - THE PRIVATE ENGINEER SHALL FURNISH THE HOUSE LATERAL DEPTH AT THE PROPERTY LINE BELOW THE TOP OF CURB ELEVATION FOR EACH HOUSE LATERAL ON THE GRADE SHEET.
 - NO REVISIONS SHALL BE MADE IN THESE PLANS WITHOUT THE APPROVAL OF THE COUNTY ENGINEER.
 - USE STANDARD MANHOLE FRAMES AND COVERS, S-117, EXCEPT AS NOTED.
 - USE STANDARD STRENGTH PIPE EXCEPT AS NOTED.
 - USE CEMENT MORTAR OR "WIDOR-LOCK" OR "SPRIG-SEAL" FOR ALL V.C.P. JOINTS PER S.P.C.S., SECT. 26 & 48.
 - RESURFACE ALL TRENCH WITHIN PAVED AREA TO MEET L.A. COUNTY ROAD DEPT. OR CALIF. STATE HIGHWAY REQUIREMENTS IN ACCORDANCE WITH PERMITS.
 - INCREASE FOUR FEET OF SEWER AT POINTS OF INTERFERENCE WITH POLES, CASE NO. S-172.
 - HOUSE LATERALS TO BE CONSTRUCTED WITH STRUCTURE, S-116, EXCEPT AS NOTED.
 - FOR ALLOWABLE LEAKAGE TEST USE FORMULA NO. 1, S.P.C.S., SEC. 54.
 - MANHOLE TOPS IN UNIMPROVED AREAS TO BE SIX INCHES ABOVE FINISHED GRADE.
 - THE CONTRACTOR SHALL NOTIFY THE CONSTRUCTION & STORM DRAIN DIVISION BY TELEPHONE, MADISON 9-810, EXT. 240, AT LEAST TWENTY-FOUR HOURS BEFORE STARTING ANY WORK UNDER THIS CONTRACT.
 - STANDARD SPECIFICATIONS DATED JAN. 1, 1950 APPLY IN THE CONSTRUCTION OF THIS PROJECT.

ENGINEERING SERVICE CORPORATION
 1127 W. WASHINGTON BLVD.
 LOS ANGELES 15, CALIF. RI. 9-7281

REVISIONS		TRACED BY <u>J. Amburo</u>
		DES'G'D BY <u>C.M.P.</u>
		CK'D BY
		SUBMITTED
SUB STRUCTURES OK'D		
W. O. NO.	DWS. NO.	DATE
6777-85		Nov. 1959
		SCALE
		As Noted
		L. B.
		P. B.
		Sheet

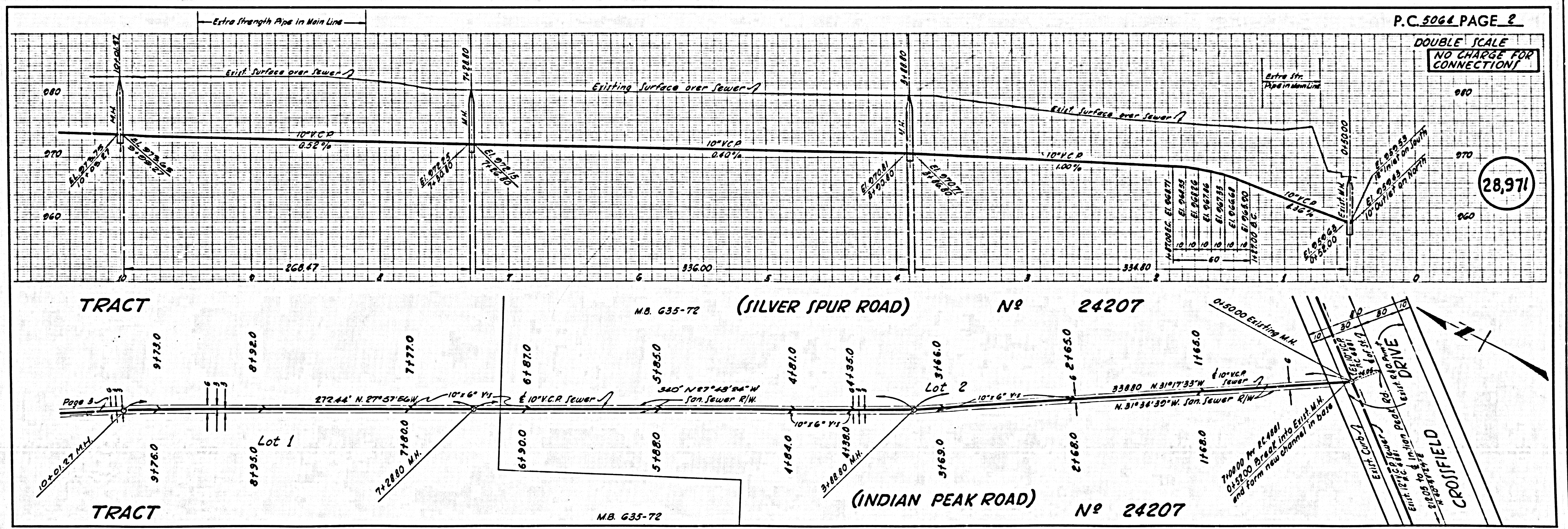
PROFILE ALIGNMENT AND GRADE OF P.C. 5064
 SANITARY SEWERS PAGE 1
 TO BE CONSTRUCTED IN
 RIGHT OF WAY IN TRACT NO. 24207

PRIVATE CONTRACT NO. 5064
 W.S. 27
 2 SHEETS, 4 PAGES
 SCALE: VERT. 1" = 4' Nov. 1959
 PREPARED IN THE OFFICES OF
 ENGINEERING SERVICE CORPORATION
 BY A.D. Kelly
 REG. C. E. NO. 3274
 FOR LEGEND SEE PLAN NO. S-A-64

28,970

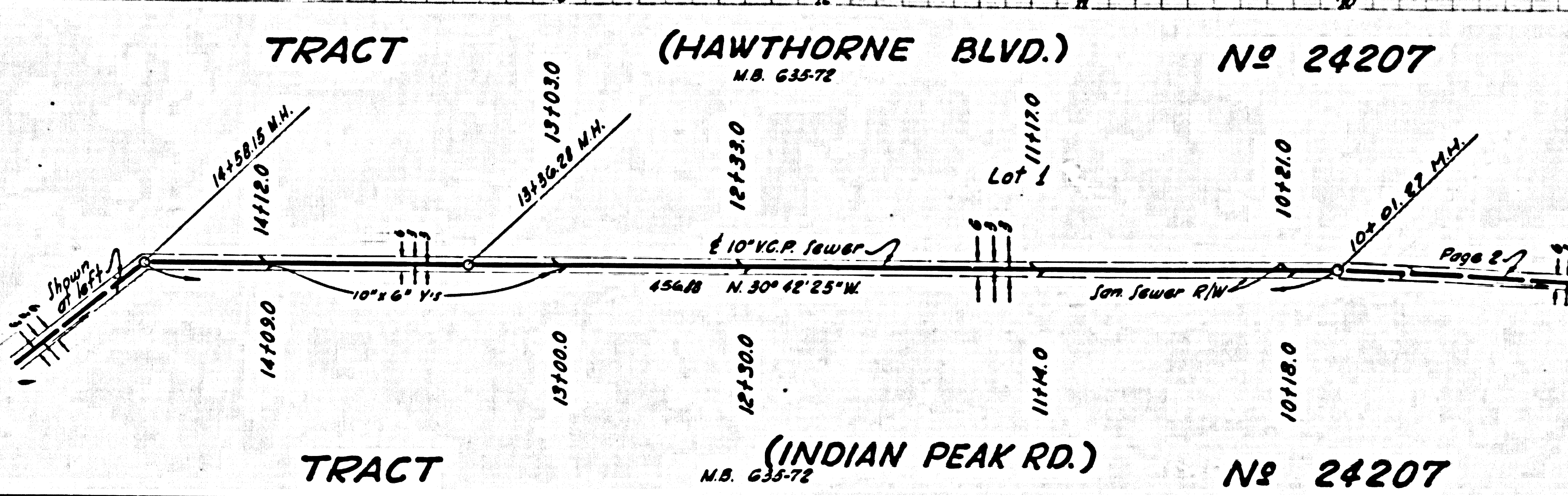
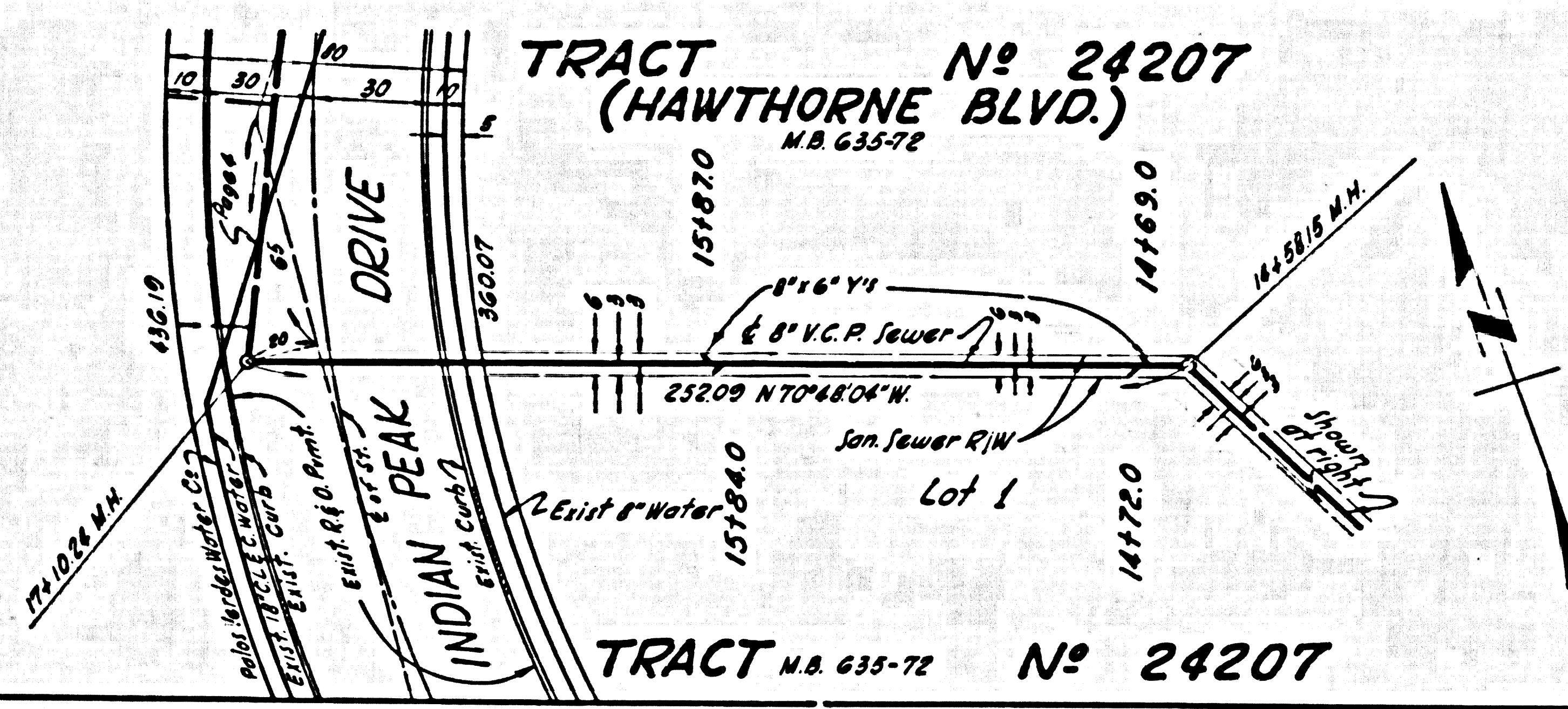
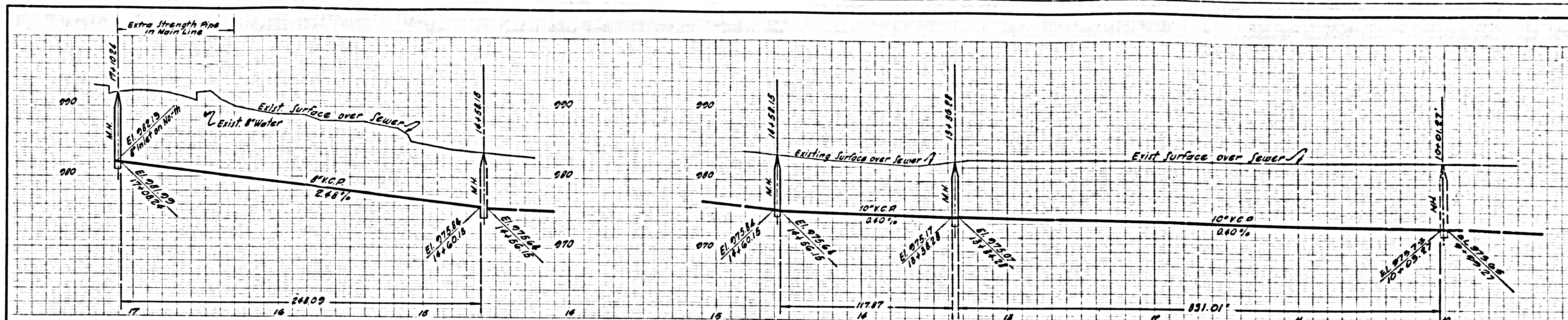
NOTES:
 GRADES TO WHICH THIS IMPROVEMENT IS TO BE CONSTRUCTED ARE SHOWN ON PLANS AND PROFILE GRADE POINTS FOR TOP OF CURB, CENTER LINE OF STREETS, OR CENTER LINE OF ALLEYS ARE SHOWN BY CIRCLES ON PROFILES AT ALL POINTS BETWEEN DESIGNATED POINTS THE GRADE SHALL BE ESTABLISHED SO AS TO CONFORM TO A STRAIGHT LINE DRAWN BETWEEN SAID DESIGNATED POINTS.
 ELEVATIONS ARE IN FEET ABOVE U.S.C. & G.S. SEA LEVEL DATUM OF 1929.
 THE DRAWING AND THE DATA HEREON ARE HEREBY MADE A PART OF THE SPECIFICATIONS ON FILE IN THE OFFICE OF THE COUNTY ENGINEER AND SHALL BE PROSECUTED ONLY BY THE REPRESENTATIVE OF THE COUNTY ENGINEER.
 BEFORE WORK CAN BE STARTED, THE CONTRACTOR MUST OBTAIN A PERMIT TO OCCUPY IN COUNTY STREETS FROM THE L.A. COUNTY ROAD DEPT., DISTRICT OFFICE NO. 1, 127 W. WASHINGTON BLVD., LOS ANGELES 15, CALIF. THE COUNTY ENGINEER, ROOM 324 PAN AMERICAN BUILDING, 228 SO. BROADWAY, SAN FRANCISCO TO COVER THE COST OF CONSTRUCTION INSPECTION AND RECORD PLANS.
 APPROVAL OF THIS PLAN BY THE COUNTY OF LOS ANGELES DOES NOT CONSTITUTE A REPRESENTATION AS TO THE ACCURACY OF THE LOCATION OF OR THE EXISTENCE OR NON-EXISTENCE OF ANY UNDERGROUND UTILITY PIPE, OR STRUCTURE WITHIN THE LIMITS OF THIS PROJECT THIS NOTE APPLIES TO ALL PAGES.
 IF WORK IS TO BE DONE IN A SEWER TRENCH, A PERMIT MUST BE OBTAINED FROM THE STATE OF CALIFORNIA, DIVISION OF HIGHWAYS, 128 SOUTH SPRING STREET.

COUNTY OF LOS ANGELES, CALIFORNIA
 APPROVED, JOHN A. LAMME, COUNTY ENGINEER
 APPROVED, C.P. COMPTON, CHIEF ENGINEER
 BY A.D. Kelly DISTRICT SANITATION ENGINEER
 BY A.D. Kelly DISTRICT SANITATION ENGINEER
 CHECKED BY S.K. Wain 3-16-60
 OFFICE OF COUNTY ENGINEER, REG. C. E. NO. 2416
 SUBMITTED BY Jack C. Lansing
 DISTRICT SANITATION ENGINEER, REG. C. E. NO. 2416



28,971

28,972



28,973

