

PUNTE BLDG. DIST. NO. 2

PROFILE ALIGNMENT AND GRADE OF **P.C. 5066**
SANITARY SEWERS PAGE **1**
 TO BE CONSTRUCTED IN **J.N. 0350.30**

TRACT No. 24359

PRIVATE CONTRACT NO. 5066

W.S. 38

1 SHEETS, 10 PAGES

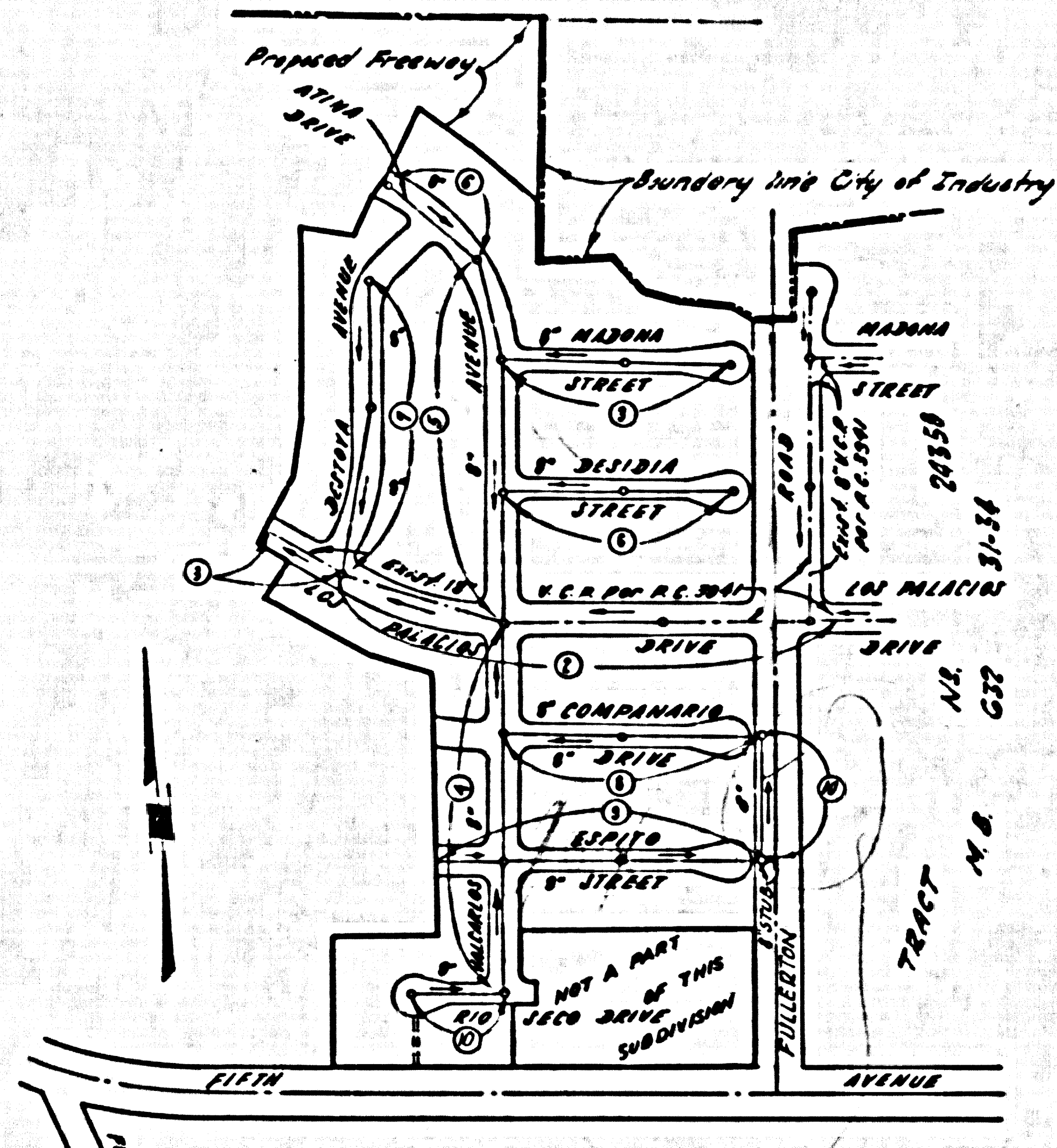
SCALE: VERT. 1" = 4' HORIZ. 1" = 40' FEBRUARY, 1959

PREPARED IN THE OFFICES OF
NATIONAL ENGINEERING CO.

Edward J. Johnson
 REG. P. E. NO. 3111

FOR LEGEND SEE PLAN NO. S-A-64

27906



INDEX MAP
 TRACT NO. 24359
 SCALE 1" = 300'
 P.C. 5066

REVISION:
 CHANGE OF GRADE AND DIRECTION
 OF FIVE (5) RACES IN B. & D. ROAD
 ADDITION OF 250' OF 8" V.C.A. AS SHOWN
 IN PAGE 10-A.
 CHECKED BY: *Carl J. Patten* 2/15/59
 OFFICE OF COUNTY ENGRS. R.C.B. 13-39

NO CHARGE
 FOR CONNECTIONS
 71-790-2-1659

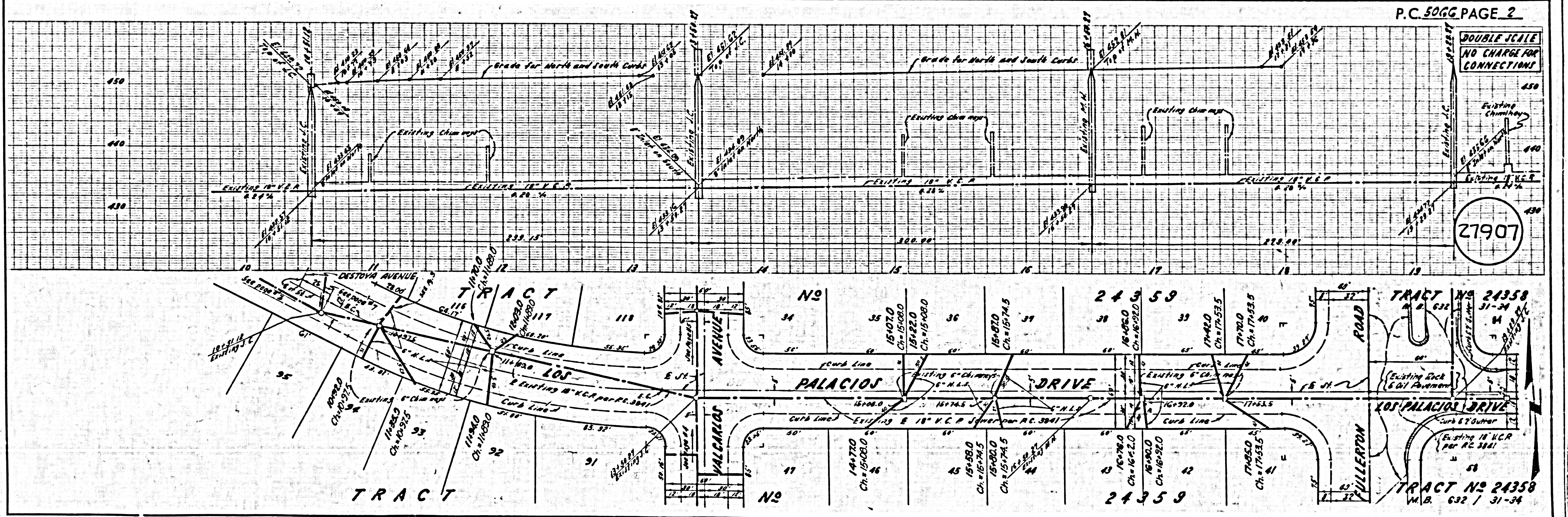
- NOTES
1. PROVIDE STAKES ON THE PROPERTY LINE OR PROPERTY LINES PRODUCED AT RIGHT ANGLES TO THE SEWER LINE AT THE CENTER LINE OF EACH MANHOLE.
 2. NO REPRESENTATIVE OF THE COUNTY ENGINEER WILL SURVEY OR LAY OUT ANY PORTION OF THE WORK.
 3. THE OWNER OR HIS AUTHORIZED REPRESENTATIVE SHALL FURNISH THE COUNTY ENGINEER WITH GRADE SHEETS AND STATIONING FOR ALL HOUSE LATERALS AND V BRANCHES AND SHALL PROVIDE STAKES FOR THEM AT THEIR PROPER LOCATIONS WITH STATIONING PLAINLY MARKED. ANY CHANGE IN LOCATION SHALL BE REQUESTED BY THE OWNER OR HIS REPRESENTATIVE.
 4. THE PRIVATE ENGINEER SHALL FURNISH THE HOUSE LATERAL BATHS AT THE PROPERTY LINE BELOW THE TOP OF CURB ELEVATION FOR EACH HOUSE LATERAL ON THE GRADE SHEET.
 5. NO APPROVALS SHALL BE MADE IN THESE PLANS WITHOUT THE APPROVAL OF THE COUNTY ENGINEER.
 6. USE STANDARD MANHOLE FRAMES AND COVERS, S-117, EXCEPT AS NOTED.
 7. USE STANDARD STRENGTH PIPE EXCEPT AS NOTED.
 8. USE CEMENT MORTAR OR "WEDGE-LOCK" OR "SPREAD-BEAT" FOR ALL V.C.P. JOINTS PER S.P.C.E., SECS. 36 & 41.
 9. RESURFACE ALL TRENCH WITHIN PAVED AREA TO MEET L.A. COUNTY ROAD DEPT. OR CALIF. STATE HIGHWAY REQUIREMENTS IN ACCORDANCE WITH PERMITS.
 10. INCREASE FOUR FEET OF SEWER AT POINTS OF INTERFERENCE WITH POLES, CASE NO. S-117.
 11. HOUSE LATERALS TO BE CONSTRUCTED WITH INVERTS AT PROPERTY LINE G FEET BELOW CURB GRADE EXCEPT AS NOTED.
 12. ALL STRUCTURES SHALL BE BRICK SEWER STRUCTURES, S-114, EXCEPT AS NOTED.
 13. FOR ALLOWABLE LEAKAGE TEST USE FORMULA NO. $L = \frac{1}{2} \sqrt{D}$, S.P.C.E., SEC. 54.
 14. MANHOLE TOPS IN UNIMPROVED RIGHTS-OF-WAY TO BE SIX INCHES ABOVE FINISHED GRADE.
 15. THE CONTRACTOR SHALL NOTIFY THE CONSTRUCTION & STORM DRAIN DIVISION BY TELEPHONE, MADISON 6-02, BY MAIL AT LEAST TWENTY-FOUR HOURS BEFORE STARTING ANY WORK UNDER THIS CONTRACT.
 16. RECONSTRUCT EXISTING M.M.'S TO ELEVATION SHOWN ON PLAN.
 17. (A) IN CONSTRUCTION SHALL BE PRESENTED IN ALL AREAS UNLESS A SEPARATE CERTIFICATION IS SUBMITTED TO THE COUNTY DIV. OF COUNTY ENGINEER THAT RELATIVE CONSTRUCTION IS GREATER THAN 50%. (B) IF CONSTRUCTION IS LESS THAN 50%, THE SEWER MUST BE COMPLETED AS SHOWN ON PLANS PER S-114.
 18. IF CONSTRUCTION IS GREATER THAN 50%, CONFORM TO THE 1958 S.P.C.E. STANDARD JOINT COMPENSATION PERMITS FOR CEMENT MORTAR FOR ALL JOINTS IN ALL AREAS. "WEDGE-LOCK" OR "SPREAD-BEAT" MAY ALSO BE USED.

BENCH MARK: B.M. 44-12
 Fifth Ave., Anaheim & Puente Rd., and Fullerton Rd., 123' E. and 12' S. of E intersection of Fifth Ave. and Fullerton Rd. on N1/4 prolongation of E1/4 edge of Fullerton Rd. pavement, a std. C.S. Man. in handhole stamped "B.M. 44-12 1956 R.E. G.S." R.R. 1566-116, 1955 adj.; elev. ELEV. 483.600

NOTE:
 GRADE TO WHICH THIS IMPROVEMENT IS TO BE CONSTRUCTED AND SHOWN ON PLANS AND PROFILES, GRADE POINTS FOR TOP OF CURB, CENTER LINE OF STREET, OR CENTER LINE OF ALLEY AND SHOWN BY CIRCLES ON PROFILES AT ALL POINTS BETWEEN BENCHMARK POINTS THE GRADE SHALL BE ESTABLISHED SO AS TO CONFORM TO A STRAIGHT LINE DRAWN BETWEEN SAID BENCHMARK POINTS.
 ELEVATIONS ARE IN FEET ABOVE U.S.C. & G.S. SEA LEVEL DATUM OF 1929.
 THIS DRAWING AND THE DATA HEREON ARE HEREBY MADE A PART OF THE SPECIFICATIONS.
 BEFORE WORK CAN BE STARTED, THE CONTRACTOR MUST OBTAIN A PERMIT TO EXCAVATE IN COUNTY STREETS FROM THE L.A. COUNTY ROAD DEPT., DISTRICT OFFICE NO. 1, AND MAKE A DEPOSIT WITH THE COUNTY ENGINEER, ROOM 324 PAN AMERICAN BUILDING, 318 SO. BROADWAY, SUFFICIENT TO COVER THE COST OF CONSTRUCTION INSPECTION AND RECORD PLANS.
 APPROVAL OF THIS PLAN BY THE COUNTY OF LOS ANGELES DOES NOT CONSTITUTE A REPRESENTATION AS TO THE ACCURACY OF THE LOCATION OF OR THE EXISTENCE OR NON-EXISTENCE OF ANY UNDERGROUND UTILITY PIPE, OR STRUCTURE WITHIN THE LIMITS OF THIS PROJECT. THIS NOTE APPLIES TO ALL PAGES.
 IF WORK IS TO BE DONE ON A STATE HIGHWAY, A PERMIT MUST BE OBTAINED FROM THE STATE OF CALIFORNIA, DIVISION OF HIGHWAYS, 120 SOUTH SPRING STREET.

COUNTY OF LOS ANGELES, CALIFORNIA

APPROVED, JOHN A. LAMBE, COUNTY ENGINEER
 APPROVED, E.E. CHAFFIN, CHIEF ENGINEER
 BY *Carl J. Patten* 2/15/59
 CHECKED BY *Carl J. Patten* 2/15/59
 OFFICE OF COUNTY ENGINEER, BUREAU C. & NO. 15-627
 SUBMITTED: *N.F. Braumder*
 SAN GABRIEL VALLEY REGIONAL ENGINEER



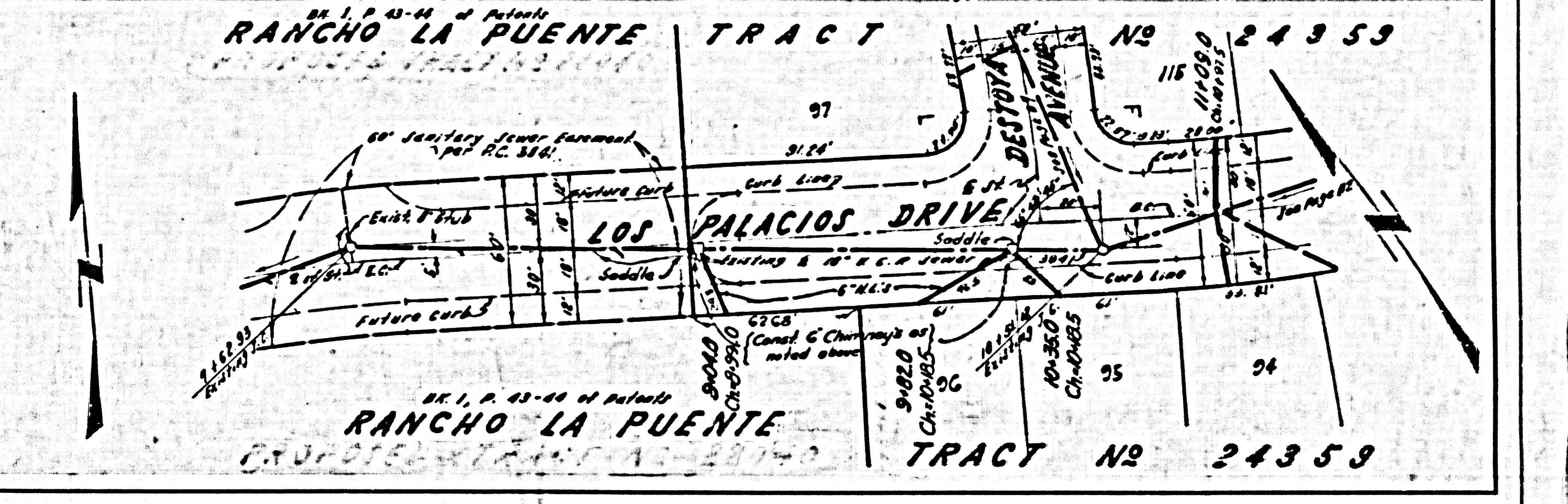
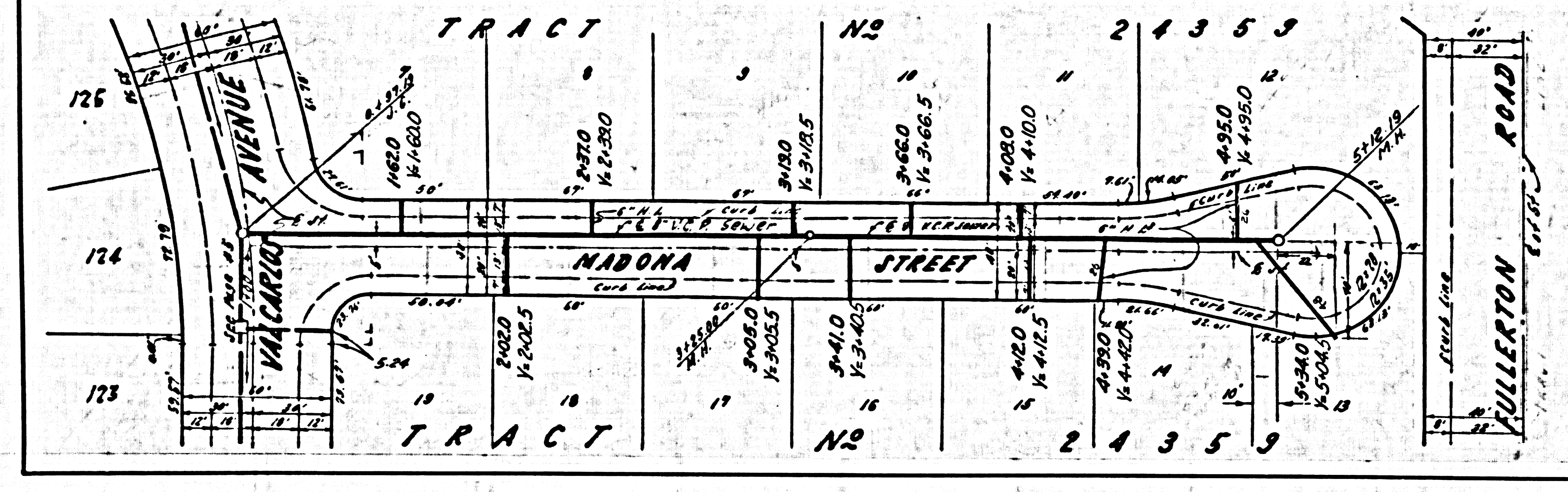
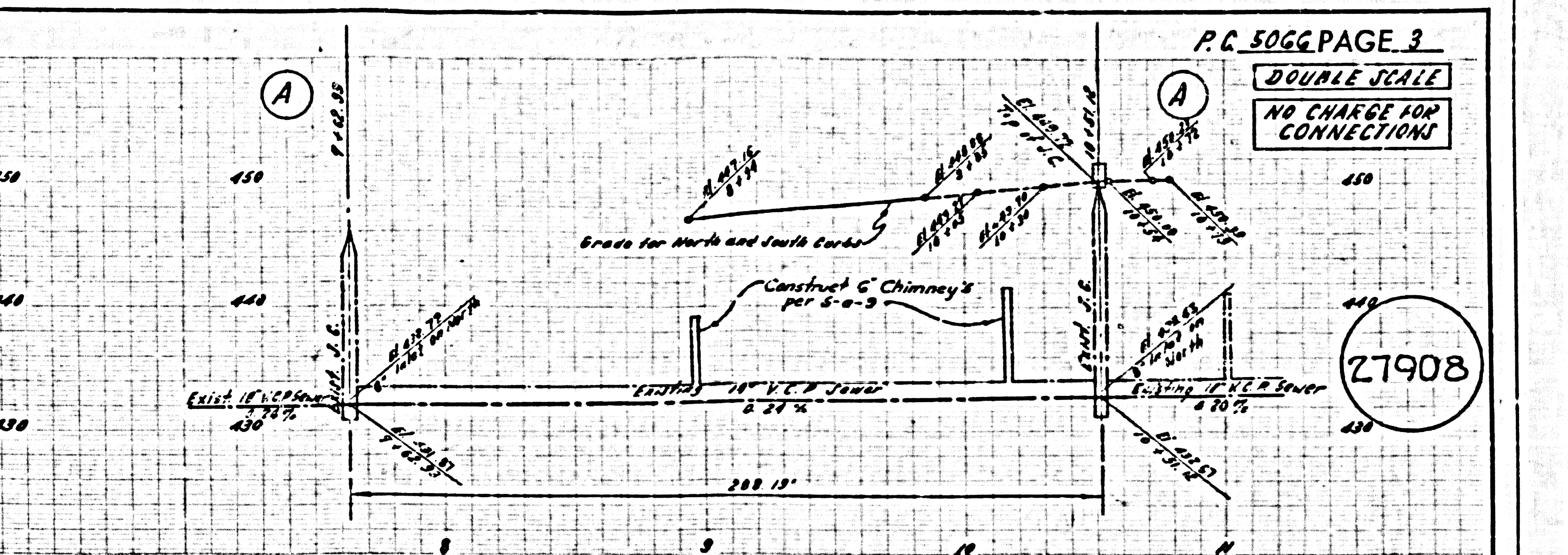
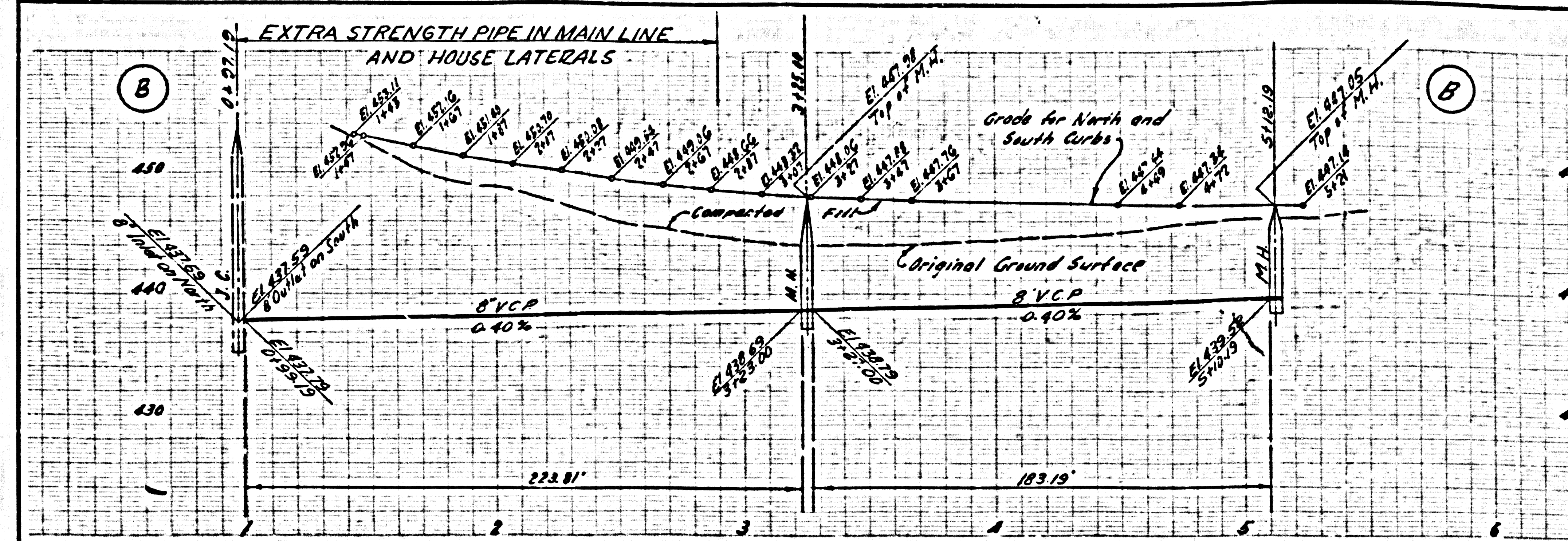
P.C. 5066 PAGE 2

DOUBLE SCALE
 NO CHARGE FOR
 CONNECTIONS

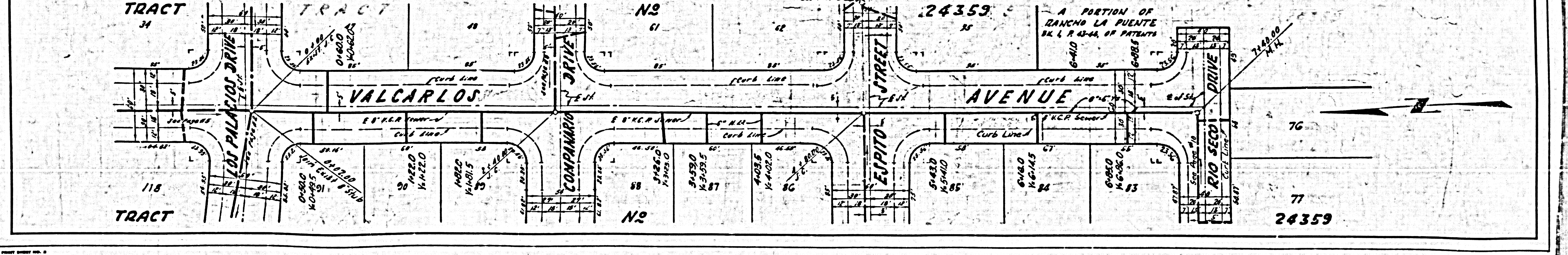
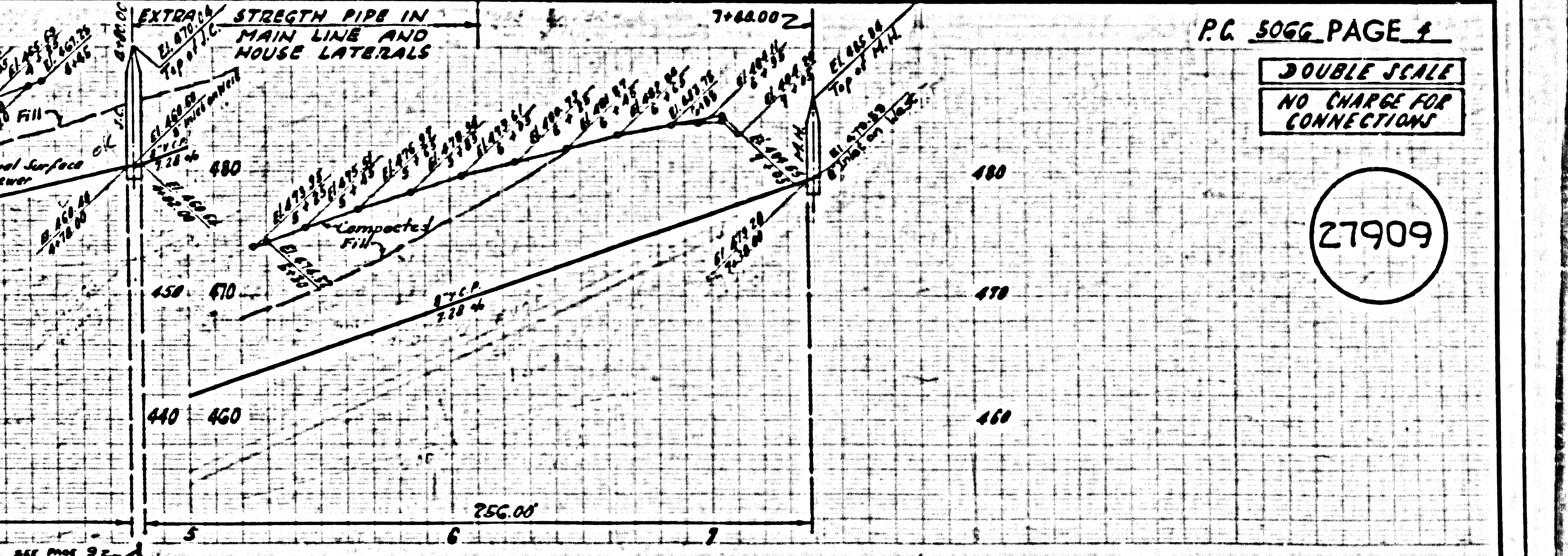
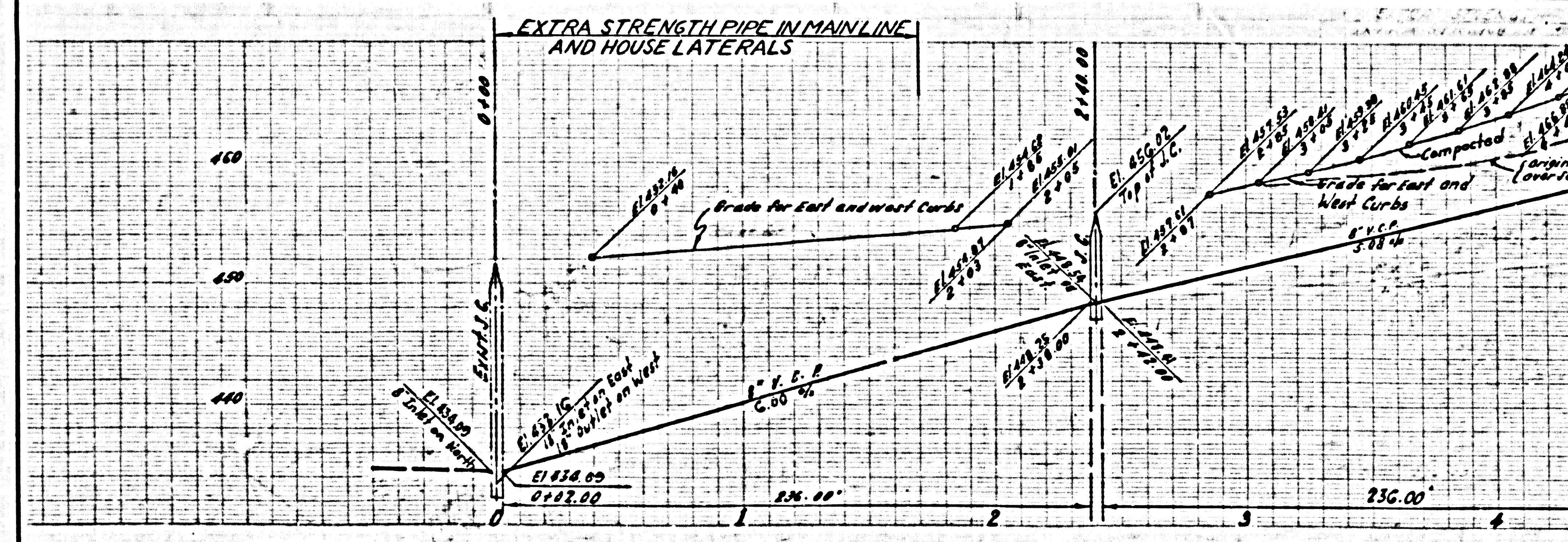
27907

TRACT NO. 24359
 W.S. 38 / 31-34

DOUBLE SCALE
NO CHARGE FOR CONNECTIONS

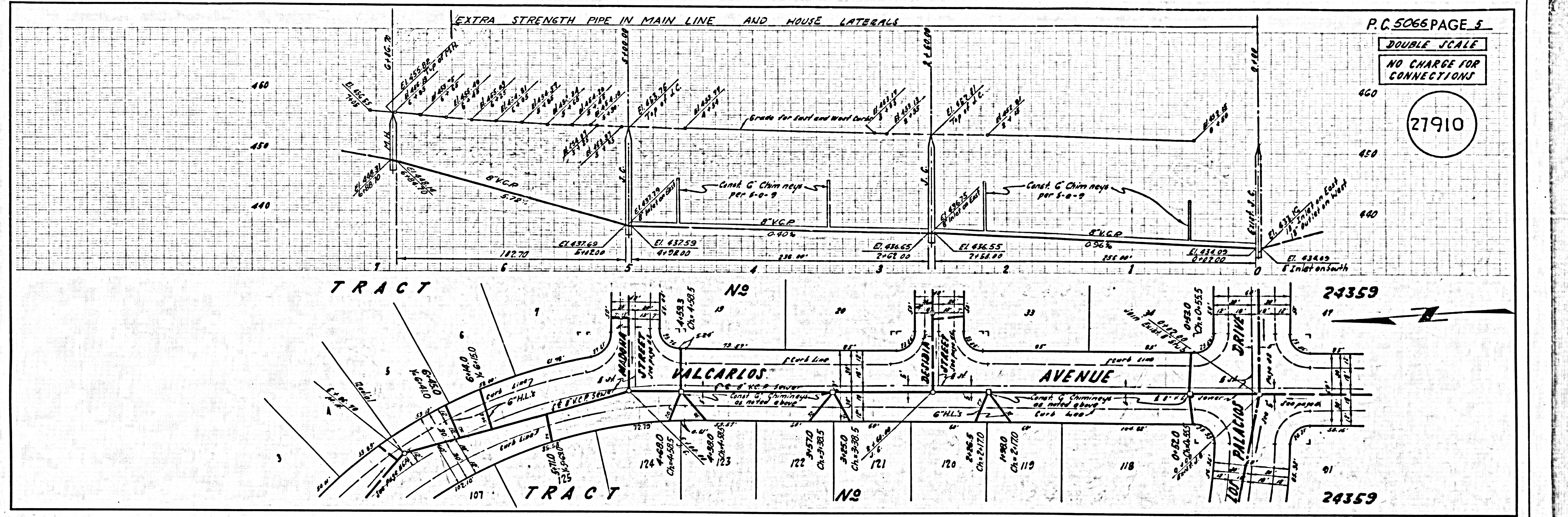


DOUBLE SCALE
NO CHARGE FOR CONNECTIONS



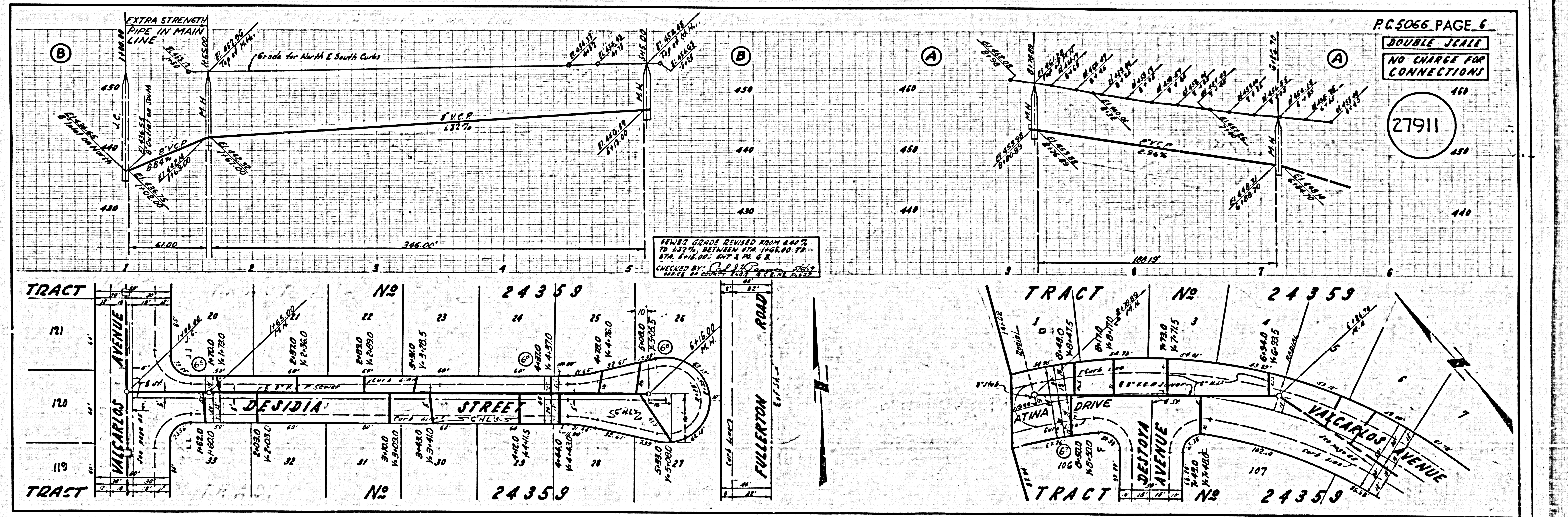
DOUBLE SCALE
NO CHARGE FOR CONNECTIONS

27910

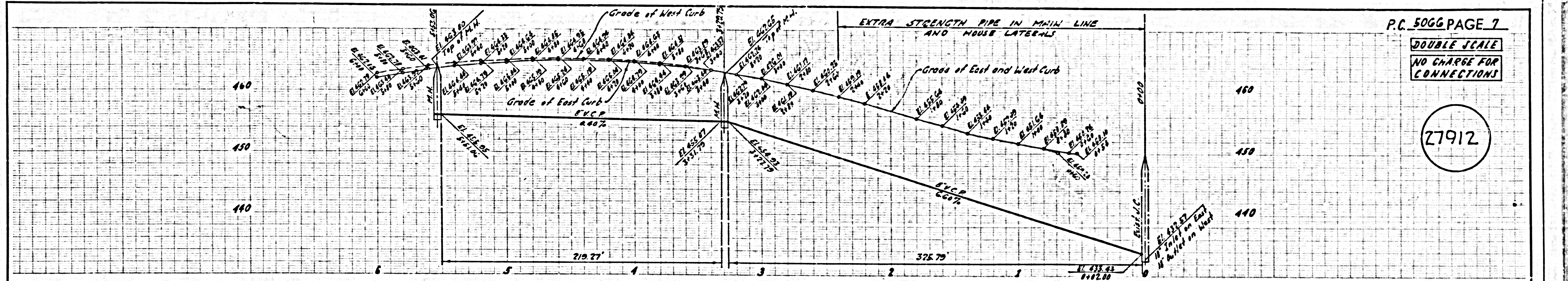


DOUBLE SCALE
NO CHARGE FOR CONNECTIONS

27911



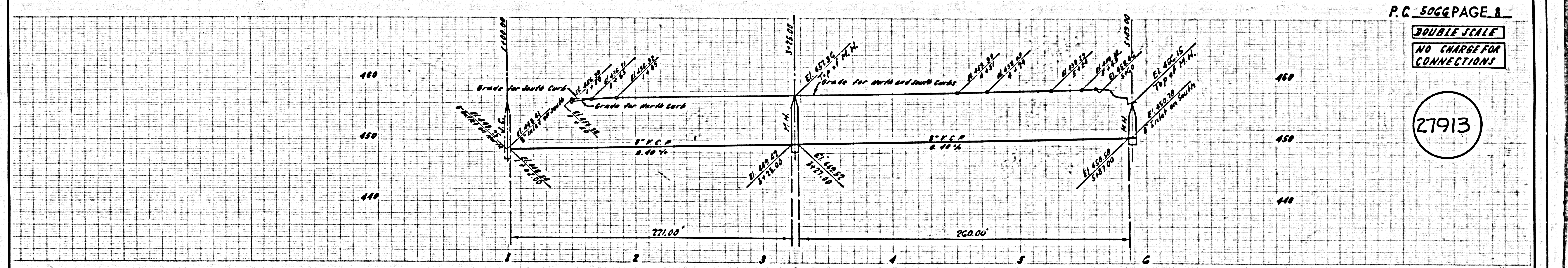
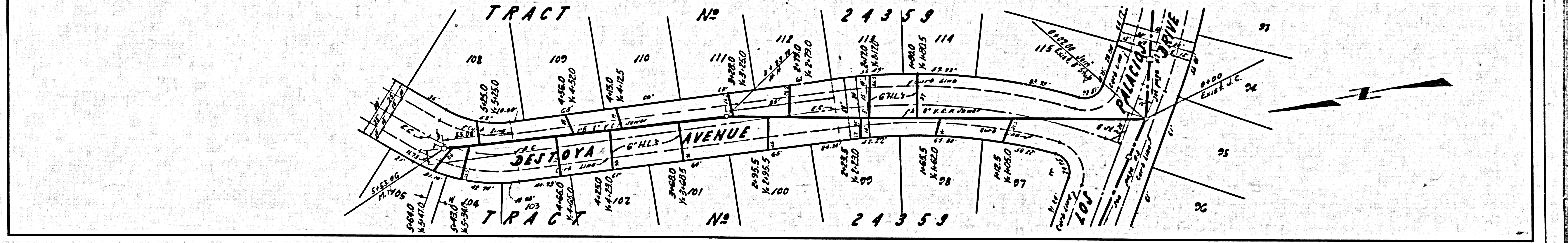
SEWER GRADE REVISED FROM 8.40% TO 8.35% BETWEEN STA. 146.00 TO STA. 614.00 ENT A PL. 6 R
CHECKED BY: C.P.V.P. DATE: 11/15/11



P.C. 5066 PAGE 7

DOUBLE SCALE
NO CHARGE FOR CONNECTIONS

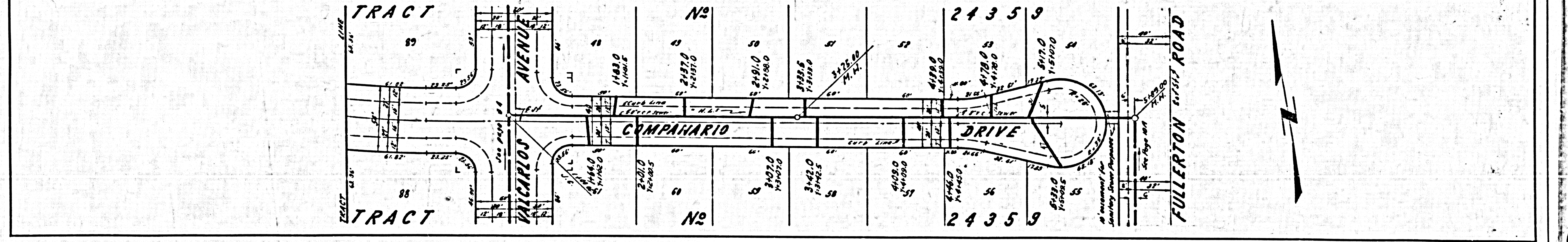
27912



P.C. 5066 PAGE 8

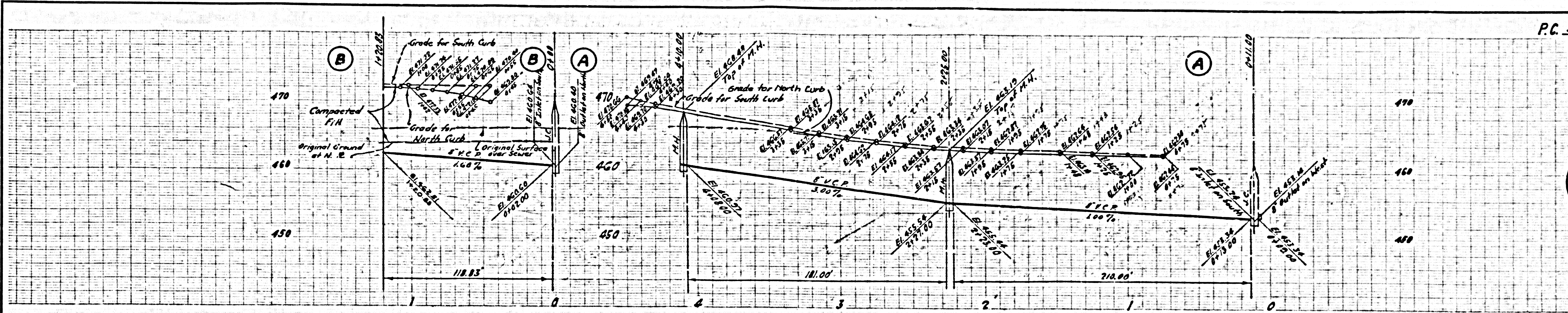
DOUBLE SCALE
NO CHARGE FOR CONNECTIONS

27913

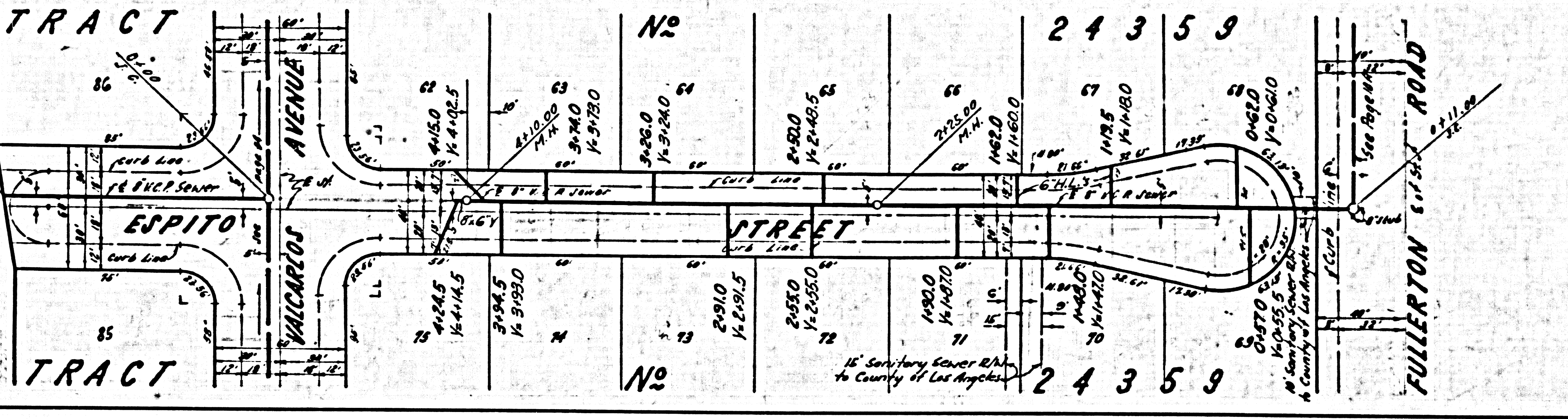


DOUBLE SCALE
NO CHARGE FOR CONNECTIONS

27914



NOTE: ALLOW NO CONNECTIONS TO LINE IN SEC. "B" (0+00 TO 1+20.83) CALL MAIN OFFICE



DOUBLE SCALE
NO CHARGE FOR CONNECTIONS

27915

