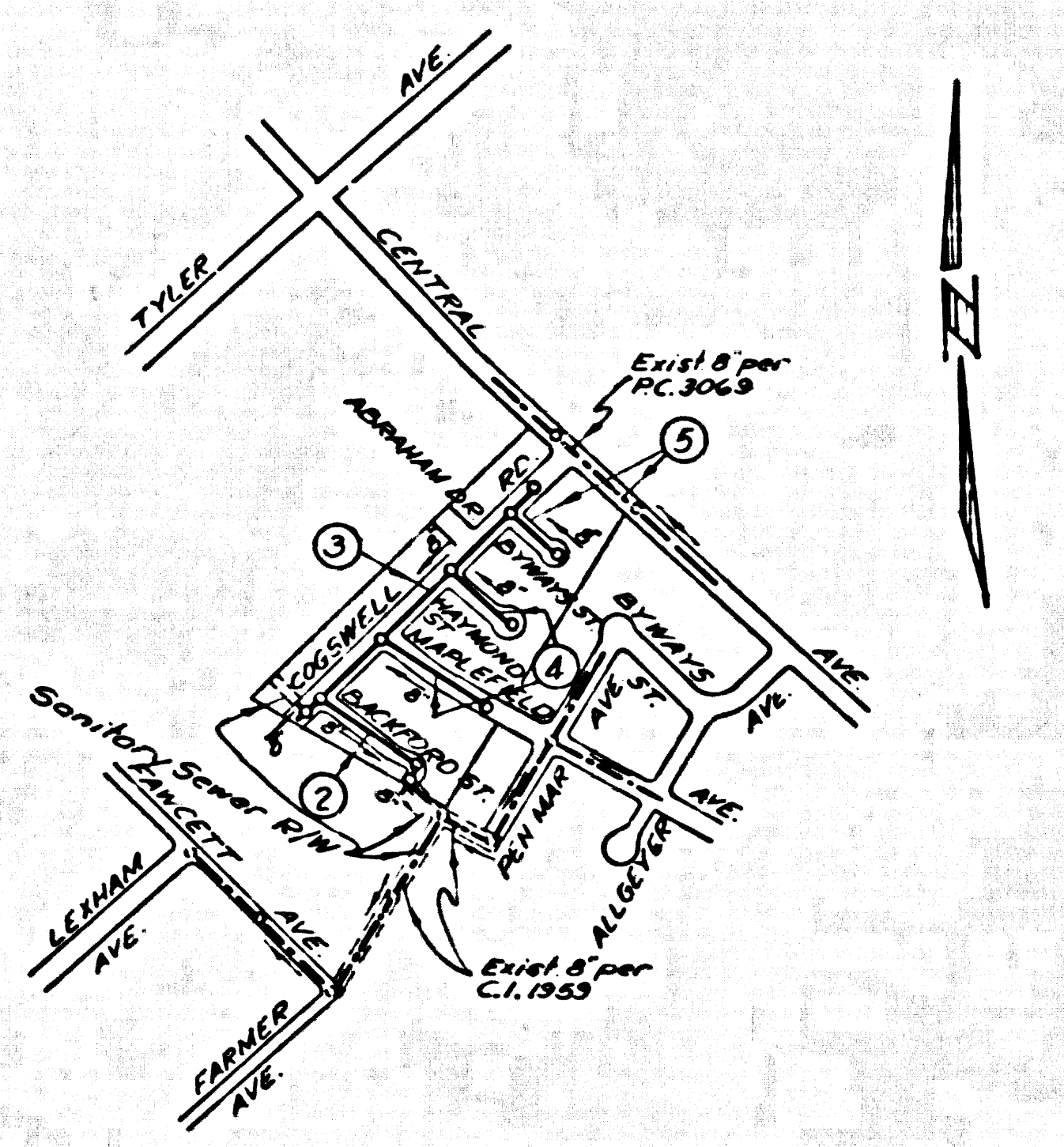


2002 25



INDEX MAP  
SCALE 1/600  
TRACT No 21638  
P.C. 5069

BENCH MARK  
S.Y. 1277 Elev. 229.495 Whittier Quad 1955  
L.A. Co. Rd. Dept. conc. man. w/brass cap - 12" dia.  
50 ft. or W.M.C. 5/8" Peck Rd. ± 1185 S. of Stock Rd.

COLLECT CHARGES  
AS INDICATED  
7/29/59

TEMPLE CITY BLDG. DIST. NO. 5

- NOTES:
1. PROVIDE STAKES ON THE PROPERTY LINE OR PROPERTY LINES PRODUCED AT RIGHT ANGLES TO THE SEWER LINE AT THE CENTER LINE OF EACH MANHOLE.
  2. NO REPRESENTATIVE OF THE COUNTY ENGINEER WILL SURVEY OR LAY OUT ANY PORTION OF THE WORK.
  3. THE OWNER OR HIS AUTHORIZED REPRESENTATIVE SHALL FURNISH THE COUNTY ENGINEER WITH GRADE SHEETS AND STATIONING FOR ALL HOUSE LATERALS AND T BRANCHES AND SHALL PROVIDE STAKES FOR THEM AT THEIR PROPER LOCATIONS WITH STATIONING PLAINLY MARKED. ANY CHANGE IN LOCATION SHALL BE REQUESTED IN WRITING BY THE OWNER OR HIS REPRESENTATIVE.
  4. THE PRIVATE ENGINEER SHALL FURNISH THE HOUSE LATERAL DEPTH AT THE PROPERTY LINE BELOW THE TOP OF CURB ELEVATION FOR EACH HOUSE LATERAL ON THE GRADE SHEET.
  5. NO REVISIONS SHALL BE MADE IN THESE PLANS WITHOUT THE APPROVAL OF THE COUNTY ENGINEER.
  6. USE STANDARD MANHOLE FRAMES AND COVERS, 6-117.
  7. USE STANDARD STRENGTH PIPE EXCEPT AS NOTED.
  8. USE "WEDGE-LOCK" OR "SPREAD-BEAR" FOR ALL V.C.P. JOINTS PER SPEC., SECS. 26 & 42.
  9. REINFORCE ALL TRENCH WITHIN PAVED AREA TO MEET L.A. COUNTY ROAD DEPT. OR CALIF. STATE HIGHWAY REQUIREMENTS IN ACCORDANCE WITH PERMITS.
  10. ENCASE FOUR FEET OF SEWER AT POINTS OF INTERFERENCE WITH POLES, CASE III, 6-172.
  11. HOUSE LATERALS TO BE CONSTRUCTED WITH INVERTS AT PROPERTY LINE - 6" FEET BELOW CURB GRADE EXCEPT AS NOTED.
  12. ALL STRUCTURES SHALL BE BRICK SEWER STRUCTURES, 6-104.
  13. FOR ALLOWABLE LEAKAGE TEST USE FORMULA NO. 2, SPEC., SEC. 54.
  14. MANHOLE TOPS IN UNIMPROVED RIGHTS-OF-WAY TO BE SIX INCHES ABOVE FINISHED GRADE.
  15. THE CONTRACTOR SHALL NOTIFY THE CONSTRUCTION & STORM DRAIN DIVISION BY TELEPHONE, MADISON 6-472, EXT. 342, AT LEAST TWENTY-FOUR HOURS BEFORE STARTING ANY WORK UNDER THIS CONTRACT.
  16. STANDARD SPECIFICATIONS DATED MAY 15, 1959 APPLY IN THE CONSTRUCTION OF THIS PROJECT.

PROFILE ALIGNMENT AND GRADE OF P.C. 5069  
SANITARY SEWERS PAGE 1  
TO BE CONSTRUCTED IN J.N. 0350.32  
TRACT No 21638

PRIVATE CONTRACT NO. 5069  
W.S. 37

3 SHEETS, 5 PAGES

SCALE: VERT. 1" = 4' FEBRUARY, 1959

PREPARED BY THE OFFICES OF  
ADAMS AND ELLS  
CIVIL ENGINEERS

BY: *William P. Adams* 2/20/59  
REG. C. & NO. 10,830

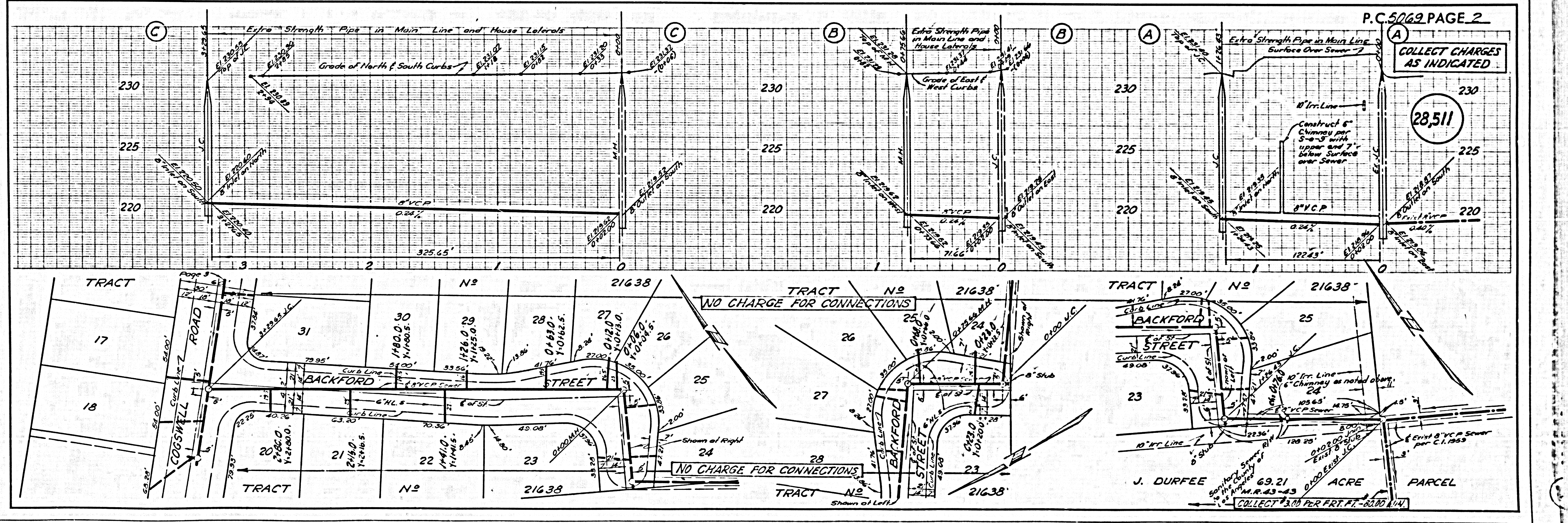
FOR LEGEND SEE PLAN NO. S-A-64

28,510

NOTES:  
GRADES TO WHICH THIS IMPROVEMENT IS TO BE CONSTRUCTED ARE SHOWN ON PLANS AND PROFILE. GRADE POINTS FOR TOP OF CURBS, CENTER LINE OF STREETS, OR CENTER LINE OF ALLEYS ARE SHOWN BY CIRCLES ON PROFILES AT ALL POINTS BETWEEN MANHOLES. POINTS THE GRADE SHALL BE ESTABLISHED SO AS TO CONFORM TO A STRAIGHT LINE DRAWN BETWEEN SAID BENCHMARK POINTS.  
ELEVATIONS ARE IN FEET ABOVE U.S.C. & G.S. SEA LEVEL DATUM OF 1929.  
THIS DRAWING AND THE DATA HEREON ARE HEREBY MADE A PART OF THE SPECIFICATIONS.  
WORK SHALL BE CONSTRUCTED ACCORDING TO SPECIFICATIONS ON FILE IN THE OFFICE OF THE COUNTY ENGINEER AND SHALL BE INSPECTED ONLY IN THE PRESENCE OF THE COUNTY ENGINEER.  
BEFORE WORK CAN BE STARTED, THE CONTRACTOR MUST OBTAIN A PERMIT TO EXCAVATE ON COUNTY STREETS FROM THE L.A. COUNTY ROAD DEPT., DISTRICT OFFICE NO. 1, AND MAKE A DEPOSIT WITH THE COUNTY ENGINEER, ROOM 524 PARK AVENUE, PASADENA, 250 SO. CALIFORNIA AVENUE, PASADENA, CALIF. TO COVER THE COST OF CONSTRUCTION INSPECTION AND RECORD PLANS.  
APPROVAL OF THIS PLAN BY THE COUNTY OF LOS ANGELES DOES NOT CONSTITUTE A REPRESENTATION AS TO THE ACCURACY OF THE LOCATION OF OR THE EXISTENCE OR NON-EXISTENCE OF ANY UNDERGROUND UTILITY PIPE, OR STRUCTURE WITHIN THE LIMITS OF THE PROJECT. THIS NOTE APPLIES TO ALL PAGES.  
IF WORK IS TO BE DONE ON A STATE HIGHWAY, A PERMIT MUST BE OBTAINED FROM THE STATE OF CALIFORNIA, DIVISION OF HIGHWAYS, 120 SOUTH SPRING STREET.

COUNTY OF LOS ANGELES, CALIFORNIA

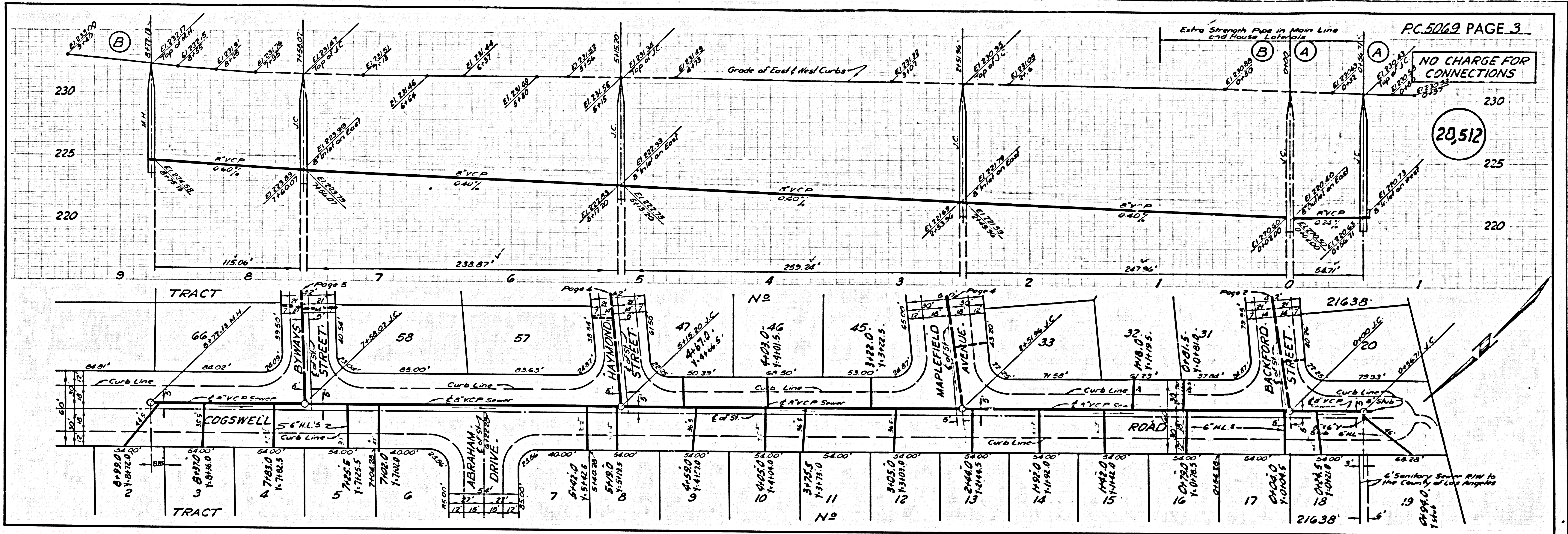
APPROVED, JOHN A. LAMBE, COUNTY ENGINEER  
APPROVED, C.R. COMPTON, CHIEF ENGINEER  
BY: *John A. Lamb* COUNTY ENGINEER  
BY: *Charles R. Compton* CHIEF ENGINEER  
CHECKED BY: *Wm. W. Wills* 7-8-59  
OFFICE OF COUNTY ENGINEER, REG. C. & NO. 7346



P.C. 5069 PAGE 2  
COLLECT CHARGES AS INDICATED  
28,511

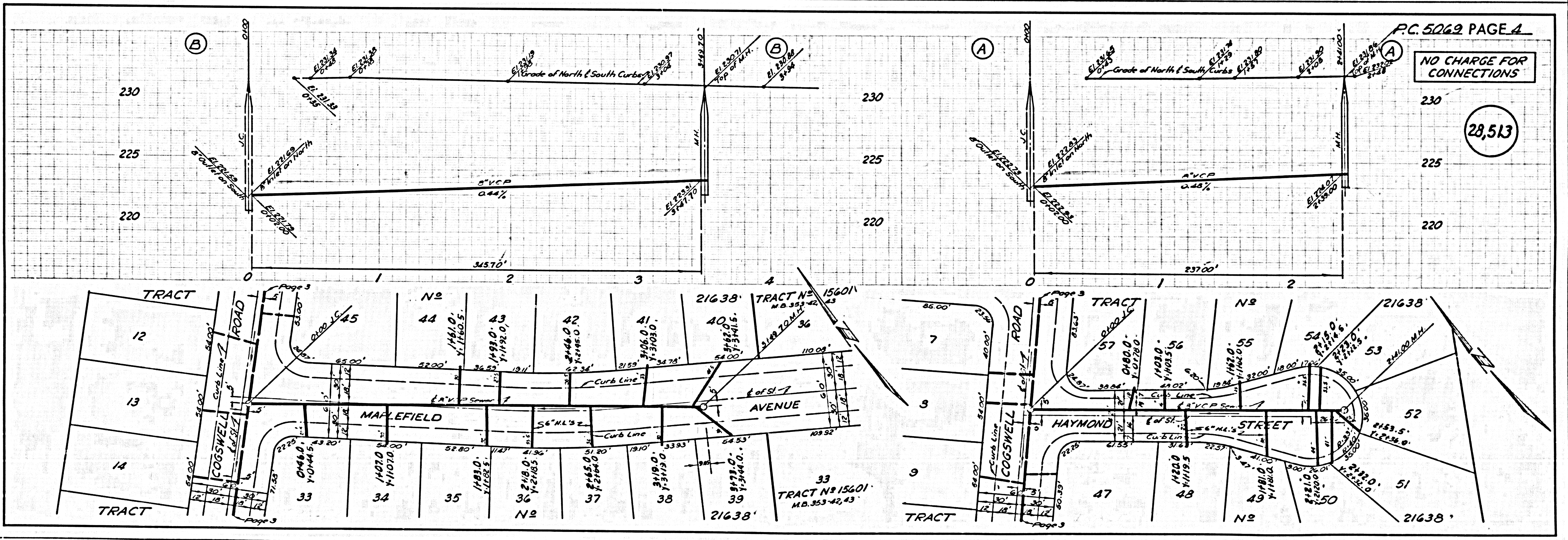
NO CHARGE FOR CONNECTIONS

28,512

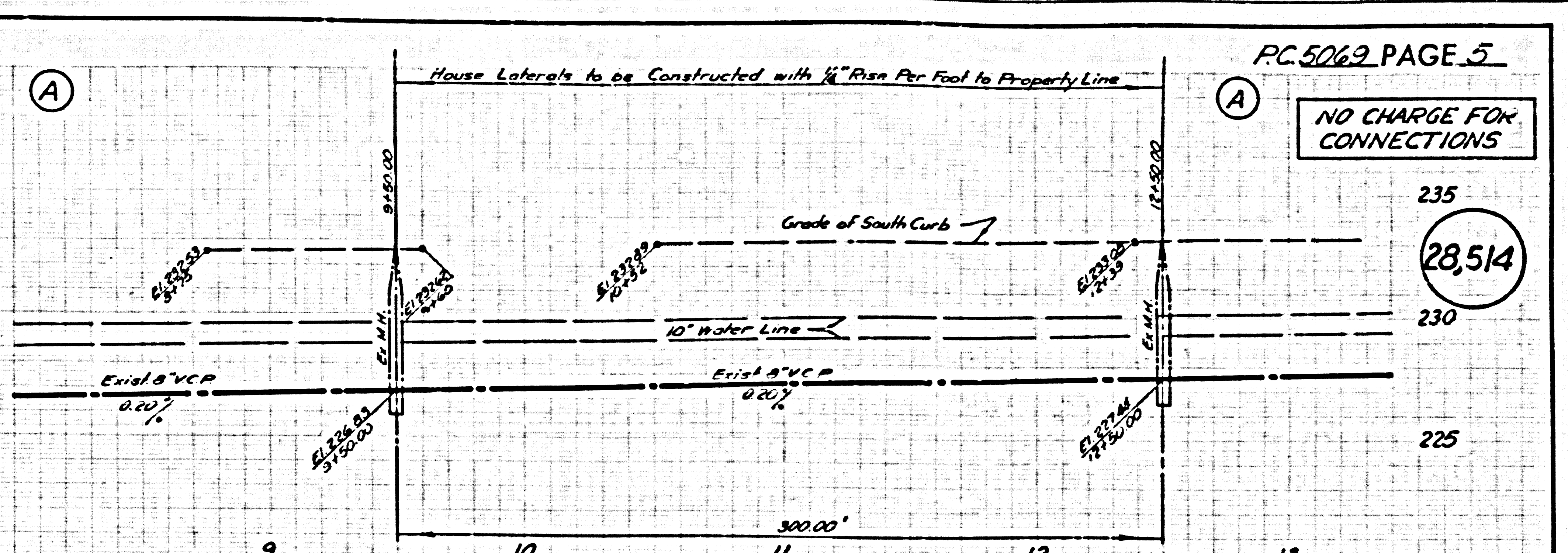
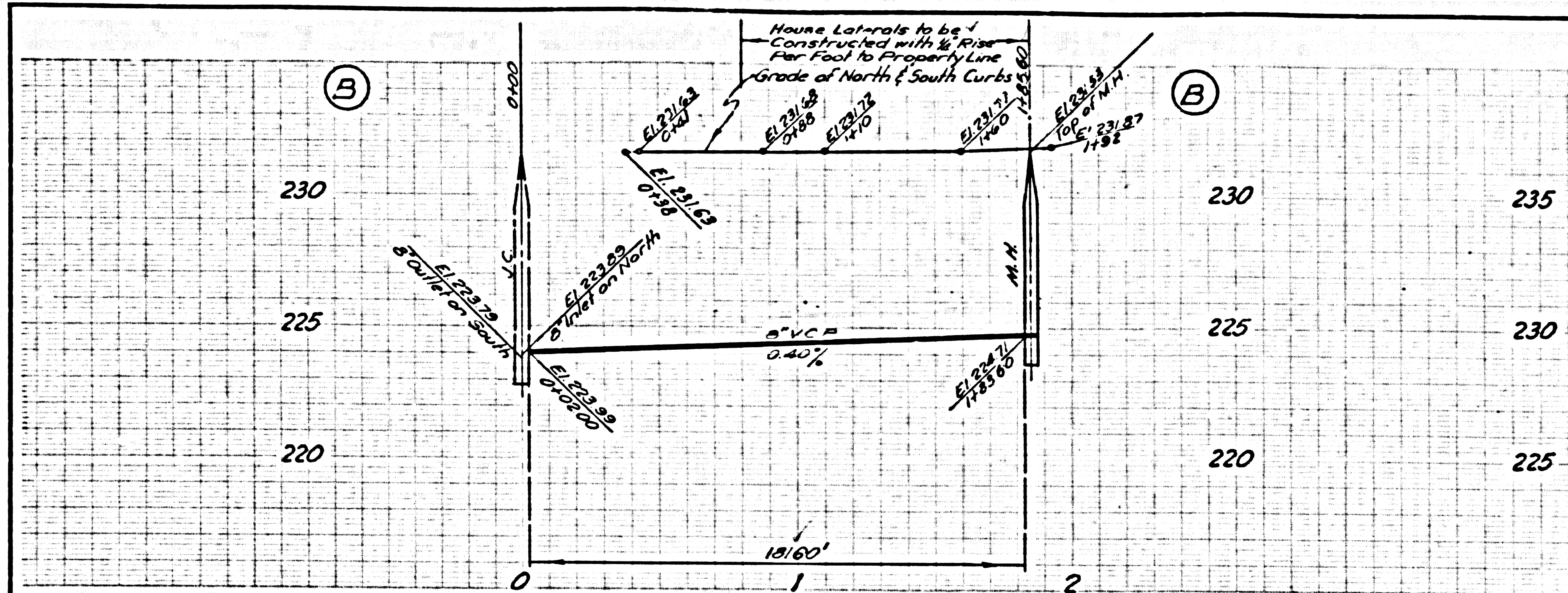


NO CHARGE FOR CONNECTIONS

28,513



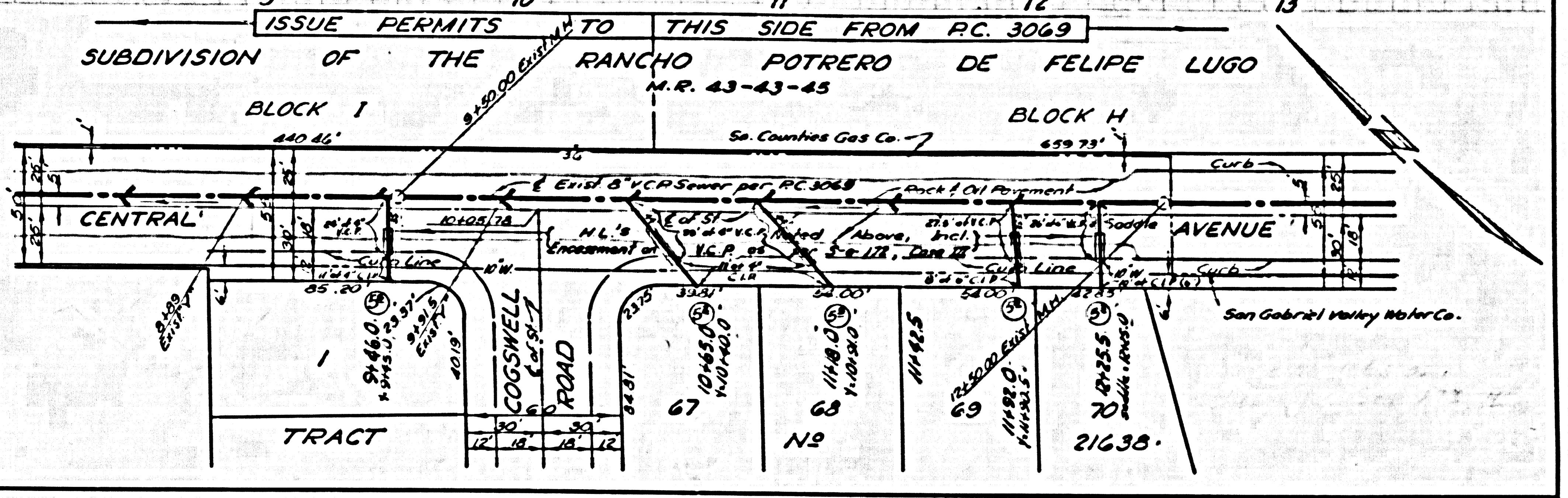
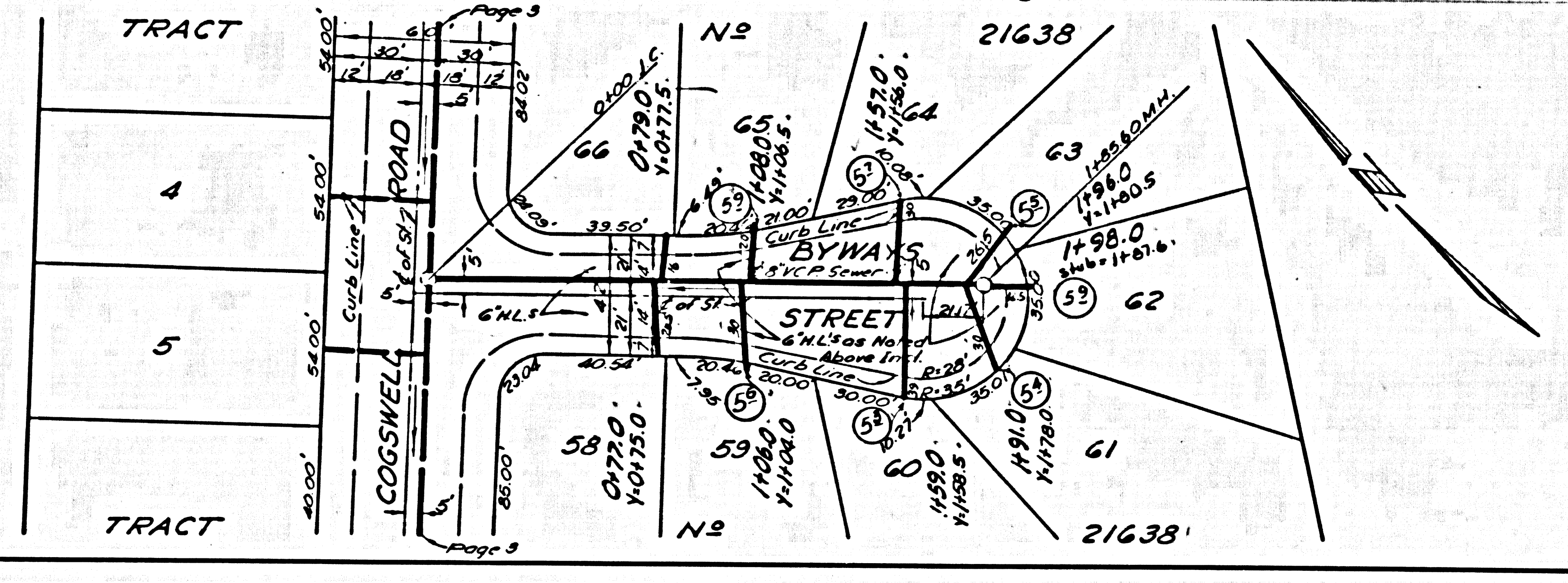
3  
PAGE 29



PC 5062 PAGE 5

NO CHARGE FOR CONNECTIONS

28,514



PAGE