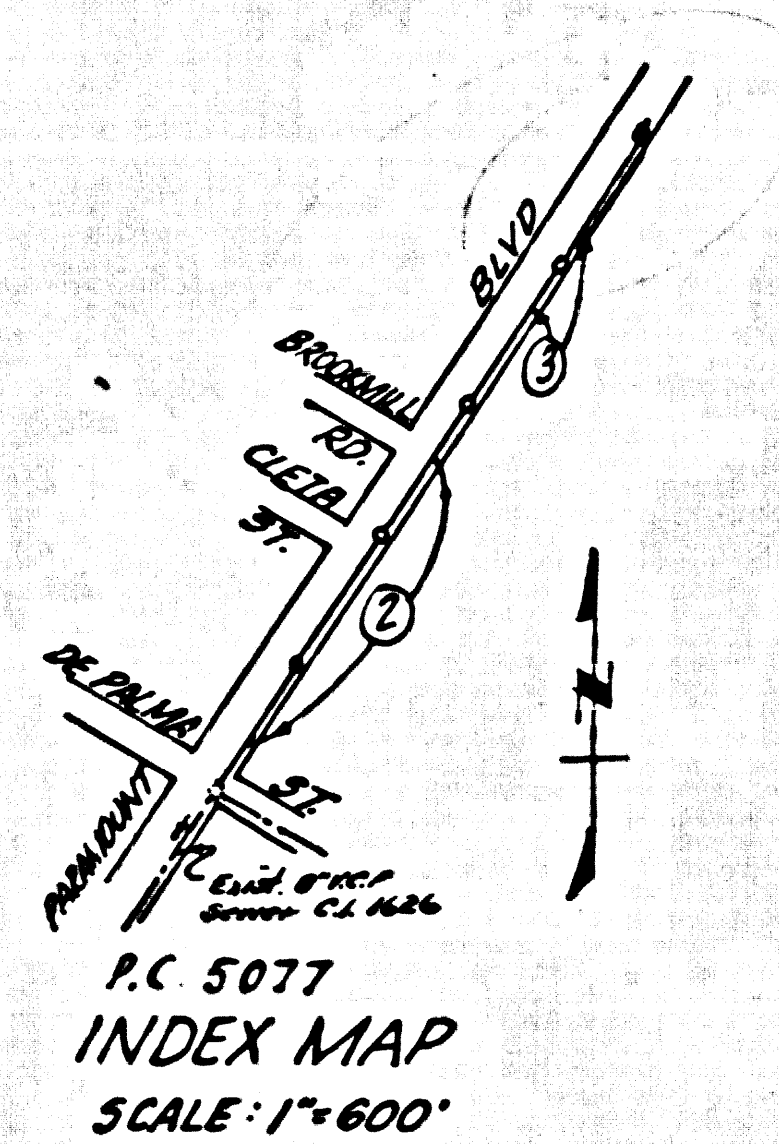


B.M. 5Y-3173 Elev. +110.459
 L & Br. So. Co. DE PALMA ST. ± 1' W. of Cb. ret.
 @ S.W. Cor. DE PALMA ST. & PARAMOUNT BLVD.
 BASELINE



CONNECTION CHARGES
 AS INDICATED
E. Under 1-8-59

DOWNEY BLDG. DIST. NO. 403

- NOTES:
1. PROVIDE STAKES ON THE PROPERTY LINE OR PROPERTY LINES PRODUCED AT RIGHT ANGLES TO THE SEWER LINE AT THE CENTER LINE OF EACH MANHOLE.
 2. NO REPRESENTATIVE OF THE COUNTY ENGINEER WILL SURVEY OR LAY OUT ANY PORTION OF THE WORK.
 3. THE OWNER OR HIS AUTHORIZED REPRESENTATIVE SHALL FURNISH THE COUNTY ENGINEER WITH GRADE SHEETS AND STATIONING FOR ALL HOUSE LATERALS AND Y BRANCHES AND SHALL PROVIDE STAKES FOR THEM AT THEIR PROPER LOCATIONS WITH STATIONING PLAINLY MARKED. ANY CHANGE IN LOCATION SHALL BE REQUESTED IN WRITING BY THE OWNER OR HIS REPRESENTATIVE.
 4. THE PRIVATE ENGINEER SHALL FURNISH THE HOUSE LATERAL DEPTH AT THE PROPERTY LINE BELOW THE TOP OF CURB ELEVATION FOR EACH HOUSE LATERAL ON THE GRADE SHEET.
 5. NO REVISIONS SHALL BE MADE IN THESE PLANS WITHOUT THE APPROVAL OF THE COUNTY ENGINEER.
 6. USE STANDARD MANHOLE FRAMES AND COVERS, S-117, COVER TO REAR SEWER.
 7. USE STANDARD STRENGTH PIPE.
 8. USE COUNTY SPEC. 141 OR "WEDGE SOCKET" OR ALL V.P.P. JOINTS PER SPEC., SECT. 141.6.
 9. RESURFACE ALL TRENCH WITHIN PAVED AREA TO MEET CITY OF DOWNEY OR CALIF. STATE HIGHWAY REQUIREMENTS IN ACCORDANCE WITH PERMITS.
 10. ENCASE FOUR FEET OF SEWER AT POINTS OF INTERFERENCE WITH POLES, CASE 141, SECT. 141.7.
 11. HOUSE LATERALS TO BE CONSTRUCTED WITH INVERTS AT PROPERTY LINE ± 6" FEET BELOW CURB GRADE.
 12. ALL STRUCTURES SHALL BE BRICK SEWER STRUCTURES, S-114, EXCEPT AS NOTED.
 13. FOR ALLOWABLE LEAKAGE TEST USE FORMULA NO. 1, SPEC., SEC. 141.
 14. MANHOLE TOPS IN UNIMPROVED RIGHTS-OF-WAY TO BE SIX INCHES ABOVE FINISHED GRADE.
 15. THE CONTRACTOR SHALL NOTIFY THE CONSTRUCTION DIVISION BY TELEPHONE, HANSON 4-87, EXT. 551 AT LEAST TWENTY FOUR HOURS BEFORE STARTING ANY WORK UNDER THE CONTRACT.
 16. STANDARD SPECIFICATIONS DATED JANUARY 1, 1960, ON FILE IN THE CITY HALL, APPLY IN THE CONSTRUCTION OF THIS PROJECT.

PROFILE ALIGNMENT AND GRADE OF P.C. 5077
 SANITARY SEWERS PAGE 1
 TO BE CONSTRUCTED IN
 PARAMOUNT BLVD.

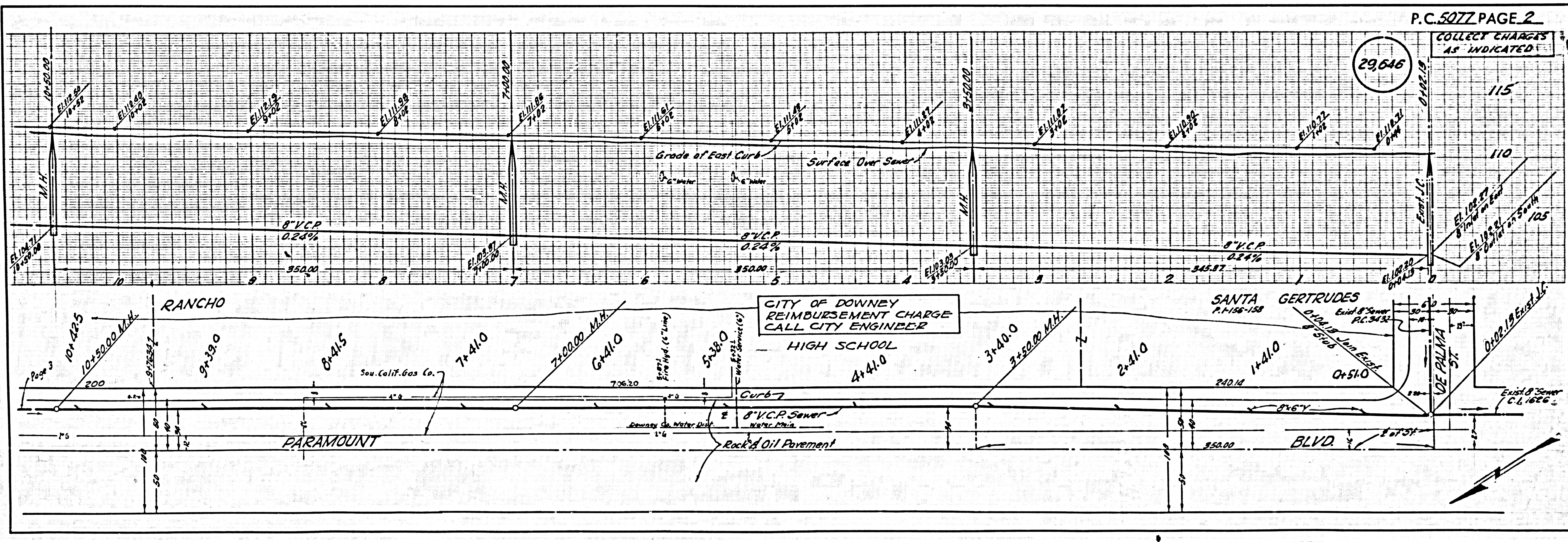
PRIVATE CONTRACT NO. 5077
 W.S. 93
 2 SHEETS, 3 PAGES
 SCALE: HORIZ. 1"=40' JAN. 1959
 PREPARED IN THE OFFICES OF
 OLSON SURVEYING SERVICE
 By *Olson Surveying Service*
 REG. C. E. NO. 7822
 FOR LEGEND SEE PLAN NO. S-A-64

29,645

NOTES:
 GRADES TO WHICH THE IMPROVEMENT IS TO BE CONSTRUCTED ARE SHOWN ON PLANS AND PROFILE. GRADE POINTS FOR TOP OF CURB, CENTER LINE OF STREET, OR CENTER LINE OF ALLEY ARE SHOWN BY CIRCLES OR TRIANGLES AT ALL POINTS BETWEEN MANHOLE POINTS. THE GRADE SHALL BE ESTABLISHED SO AS TO CONFORM TO A STRAIGHT LINE BETWEEN SAID MANHOLE POINTS.
 ELEVATIONS ARE IN FEET ABOVE U.S.C. & G.S. MEAN SEA LEVEL DATUM OF 1929.
 THIS DRAWING AND THE DATA HEREON ARE HEREBY MADE A PART OF THE SPECIFICATIONS.
 WORK SHALL BE CONSTRUCTED ACCORDING TO SPECIFICATIONS ON FILE IN THE OFFICE OF THE COUNTY ENGINEER AND SHALL BE PROSECUTED ONLY IN THE PRESENCE OF THE COUNTY ENGINEER.
 BEFORE WORK CAN BE STARTED, THE CONTRACTOR MUST OBTAIN A PERMIT TO EXCAVATE IN CITY STREETS FROM THE CITY ENGINEER, CITY OF DOWNEY, AND MAKE A REPORT WITH THE CITY OF DOWNEY BEFORE STARTING WORK.
 APPROVAL OF THIS PLAN BY THE COUNTY OF LOS ANGELES DOES NOT CONSTITUTE A REPRESENTATION AS TO THE ACCURACY OF THE LOCATION OR OF THE EXISTENCE OR NON-EXISTENCE OF ANY UNDERGROUND MOUNTAIN PIPE, OR STRUCTURE WITHIN THE LIMITS OF THIS PROJECT. THIS NOTE APPLIES TO ALL PAGES.
 IF WORK IS TO BE DONE IN A STATE HIGHWAY, A PERMIT MUST BE OBTAINED FROM THE STATE OF CALIFORNIA, DIVISION OF HIGHWAYS, 128 SOUTH BRIDGE STREET.

CITY OF DOWNEY, CALIFORNIA
 APPROVED, JOHN A. LAMME, COUNTY ENGINEER
 APPROVED, C.E. COMPANY, CHIEF ENGINEER
 By *J. A. Lamme* SANITATION ENGINEER By *C. E. Company* OFFICE ENGINEER
 CHECKED BY *R. K. Wade 4-11-59*
 OFFICE OF COUNTY ENGINEER, REG. C. E. NO. 3436
 SUBMITTED BY *John L. Esten 4-8-59*
 LOS CERRITOS REGIONAL ENGINEER REG. C.E. NO. 3871

REVISION
 EXTENDED MAIN LINE FROM
 STATION 14+00 TO STATION
 17+50
John L. Esten 8-26-60



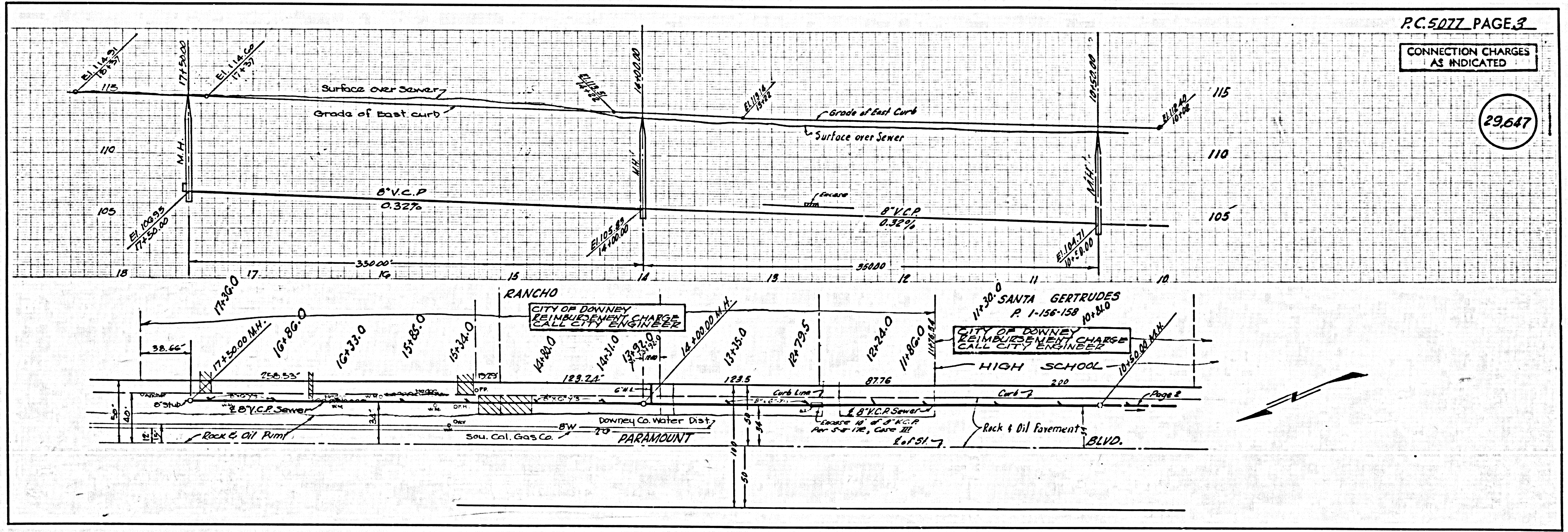
P.C. 5077 PAGE 2

COLLECT CHARGES AS INDICATED

29,646

CONNECTION CHARGES AS INDICATED

29,647



S.P.C. 2011 PARAMOUNT BLVD.

Page 2