

TEMPLE CITY BLDG. DIST. NO. 5

PROFILE ALIGNMENT AND GRADE OF P.C. 5082  
 SANITARY SEWERS PAGE 1  
 TO BE CONSTRUCTED IN J.N. 0350.43

TRACT No 24580

PRIVATE CONTRACT NO. 5082

W.S. 44

1 SHEET; 2 PAGES

27,812

SCALE: 1" = 4' MARCH, 1959

PREPARED IN THE OFFICE OF  
 A. RICHARD BROWN JR.  
 7632 COMMONWEALTH AVE. BUENA VISTA, CALIF.  
 ENGINEER LICENSE 7333

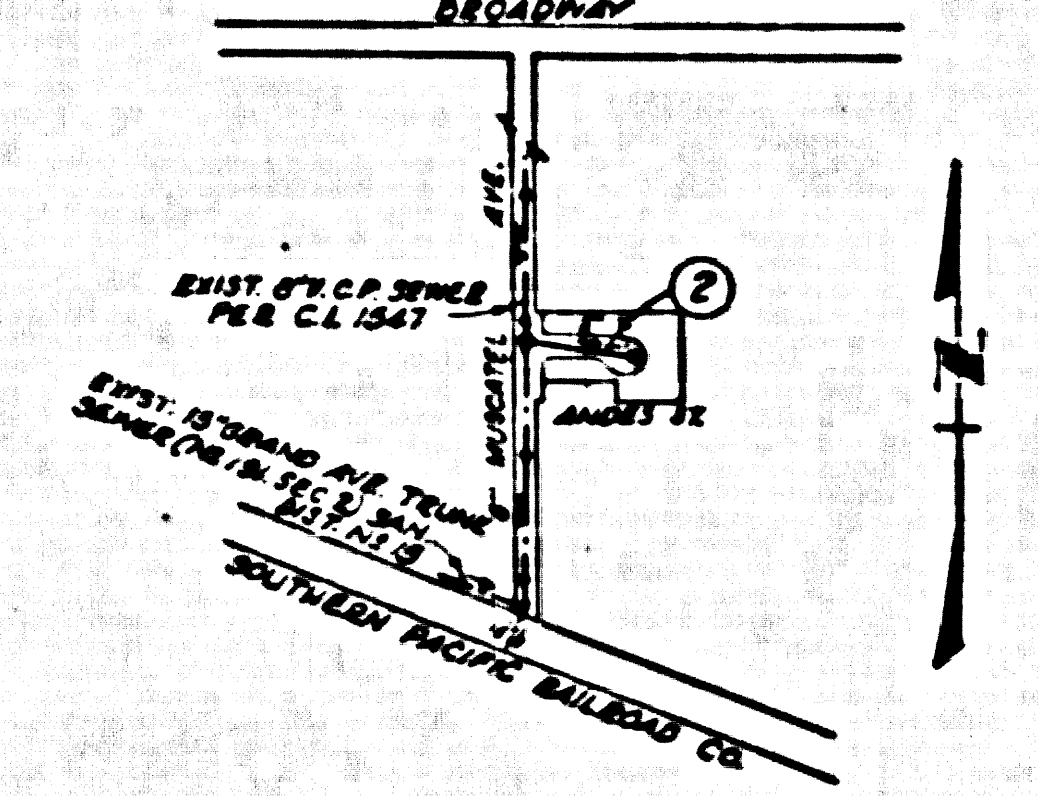
By: *A. Richard Brown Jr.*  
 REG. C. E. NO. 33223

FOR LEGEND SEE PLAN NO. S-A-64

BENCH MARK SQ. 676  
 L. & T. in West Curb of Muscatel Ave.  
 10' south of 16' South of end of Curb 2  
 80' south of E. of Broadway at south-  
 west cor. of Muscatel Ave. and E. Broadway  
 ELEV. 395.537

- NOTES
1. PROFILE STAKES ON THE PROPERTY LINE OR PROPERTY LINES PRODUCED AT RIGHT ANGLES TO THE SEWER LINE AT THE CENTER LINE OF EACH MANHOLE.
  2. NO REPRESENTATIVE OF THE COUNTY ENGINEER WILL SURVEY OR LAY OUT ANY PORTION OF THE WORK.
  3. THE OWNER OR HIS AUTHORIZED REPRESENTATIVE SHALL FURNISH THE COUNTY ENGINEER WITH GRADE SHEETS AND STAT CHAINS FOR ALL HOUSE LATERALS AND T. BRANCHES AND SHALL PROVIDE STAKES FOR THEM AT THEIR PROPER LOCATIONS WITH STAT CHAINING PLAINLY MARKED. ANY CHANGE IN HOUSE LATERAL SHALL BE REQUESTED IN WRITING BY THE OWNER OR HIS REPRESENTATIVE.
  4. THE PRIVATE ENGINEER SHALL FURNISH THE HOUSE LATERAL DATA AT THE REG. CITY LAW SHOW THE TOP OF CURB ELEVATION FOR EACH HOUSE LATERAL ON THE GRADE SHEET.
  5. NO REVISIONS SHALL BE MADE IN THESE PLANS WITHOUT THE APPROVAL OF THE COUNTY ENGINEER.
  6. USE STANDARD MANHOLE FRAMES AND COVERS, S-117.
  7. USE STANDARD STRENGTH PIPE.
  8. USE CHAMBER MORTAR OR "WEDGE LOCK" OR "SPUR-SAIL" FOR ALL V.C.P. JOINTS PER SPCC'S, SECS. 26 & 41.
  9. RESURFACE ALL TRENCH WITHIN PAVED AREA TO MEET L.A. COUNTY ROAD DEPT. OR CALIF. STATE HIGHWAY REQUIREMENTS IN ACCORDANCE WITH PERMITS.
  10. ENCASE FOUR FEET OF SEWER AT POINTS OF INTERFERENCE WITH POLES, CASE III, S-172.
  11. HOUSE LATERALS TO BE CONSTRUCTED WITH INVERTS AT PROPERTY LINE 6" FEET BELOW CURB G.M. 4."
  12. ALL STRUCTURES SHALL BE BRICK SEWER STRUCTURES, S-104.
  13. FOR ALLOWABLE MESSAGE TEST USE FORMULA NO. 1, SPCC'S, SEC. 54.
  14. MANHOLE TOPS IN UNIMPROVED RIGHTS-OF-WAY TO BE SIX INCHES ABOVE FINISHED GRADE.
  15. THE CONTRACTOR SHALL NOTIFY THE CONSTRUCTION & STORM DRAIN DIVISION BY TELEPHONE, HANBORN 9-4747, EXT. 242, AT LEAST TWENTY-FOUR HOURS BEFORE STARTING ANY WORK UNDER THIS CONTRACT.

NO CHARGE FOR CONNECTIONS  
*D.M. Goddard 1-2-59*



INDEX MAP  
 SCALE: 1" = 600'  
 TRACT No 24580  
 P.C. 5082

NOTE: GRADES TO WHICH THIS IMPROVEMENT IS TO BE CONSTRUCTED ARE SHOWN ON PLANS AND PROFILES. GRADE POINTS FOR TOP OF CURB, CENTER LINE OF STREETS, OR CENTER LINE OF ALLEYS ARE SHOWN BY CIRCLES AND PROFILES. AT ALL POINTS BETWEEN BENCHMARK POINTS THE GRADE SHALL BE ESTABLISHED SO AS TO CONFORM TO A STRAIGHT LINE DRAWN BETWEEN SAID BENCHMARK POINTS.

ELEVATIONS ARE IN FEET ABOVE U.S.C. & G.S. MEAN SEA LEVEL DATUM OF 1929.

THE DRAWINGS AND THE DATA HEREON ARE HEREBY MADE A PART OF THE SPECIFICATIONS.

WORK SHALL BE CONSTRUCTED ACCORDING TO SPECIFICATIONS ON FILE IN THE OFFICE OF THE COUNTY ENGINEER AND SHALL BE PROSECUTED ONLY IN THE PRESENCE OF THE COUNTY ENGINEER.

BEFORE WORK CAN BE STARTED, THE CONTRACTOR MUST OBTAIN A PERMIT TO EXCAVATE IN COUNTY STREETS FROM THE L. & C. COUNTY ROAD DEPT., DISTRICT OFFICE NO. 1, AND MAKE A DEPOSIT WITH THE COUNTY ENGINEER, ROOM 324 P.M. AMMANN BUILDING, 138 SO. BRADWAY, SUFFICIENT TO COVER THE COST OF CONSTRUCTION INSPECTION AND RECORD PLANS.

APPROVAL OF THIS PLAN BY THE COUNTY OF LOS ANGELES DOES NOT CONSTITUTE A REPRESENTATION AS TO THE ACCURACY OF THE LOCATION OR OF THE EXISTENCE OR NON-EXISTENCE OF ANY UNDERGROUND UTILITY PIPE, OR STRUCTURE WITHIN THE LIMITS OF THIS PROJECT. THIS NOTE APPLIES TO ALL PAGES.

IF WORK IS TO BE DONE IN A STATE HIGHWAY, A PERMIT MUST BE OBTAINED FROM THE STATE OF CALIFORNIA, DIVISION OF HIGHWAYS, 138 SOUTH SPRING STREET.

COUNTY OF LOS ANGELES, CALIFORNIA

APPROVED, JOHN A. LAMBE, COUNTY ENGINEER

APPROVED, C. B. COMPTON CHIEF ENGINEER  
 REG. SAN. ENG. NO. 12

By: *A. Richard Brown Jr.* SANITATION ENGINEER

By: *A. P. Williams* OFFICE ENGINEER

CHECKED BY: *S. C. Suda 5-2-59*

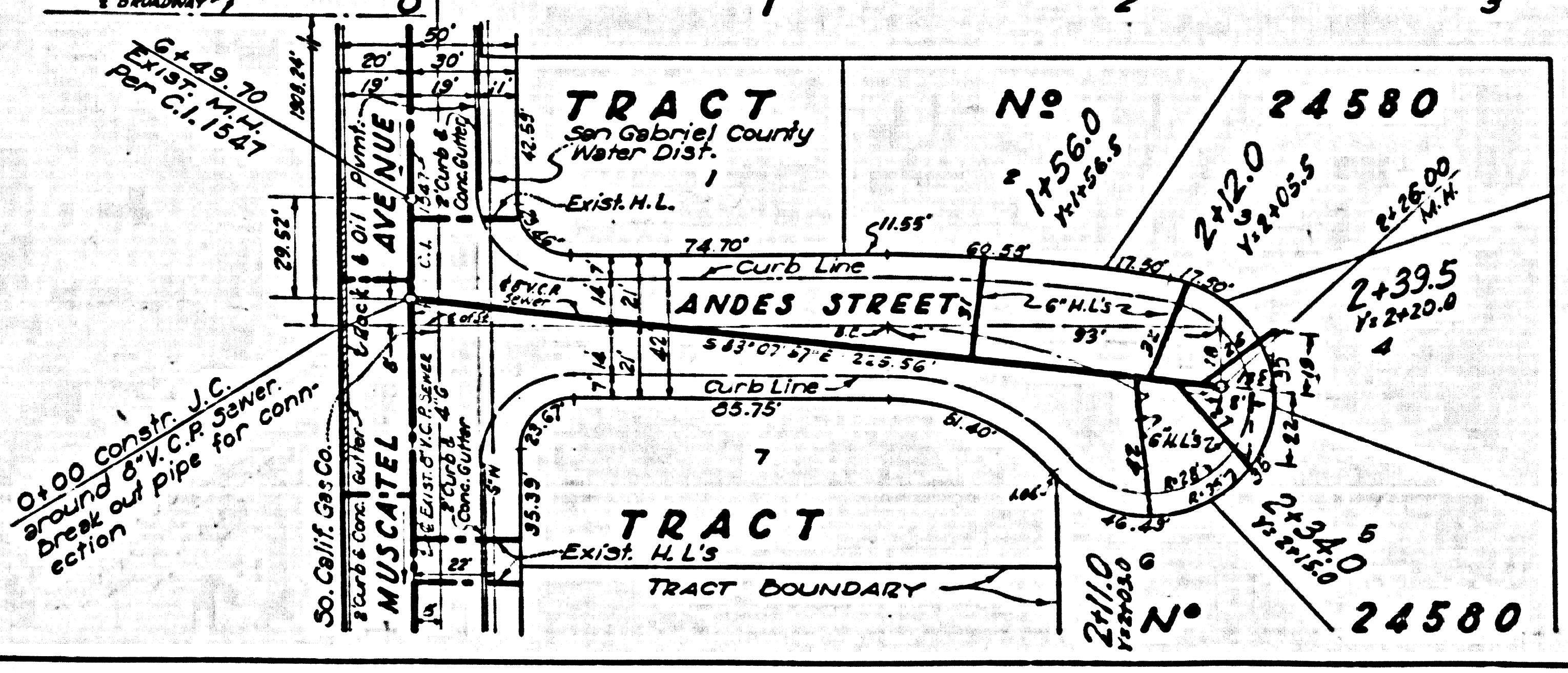
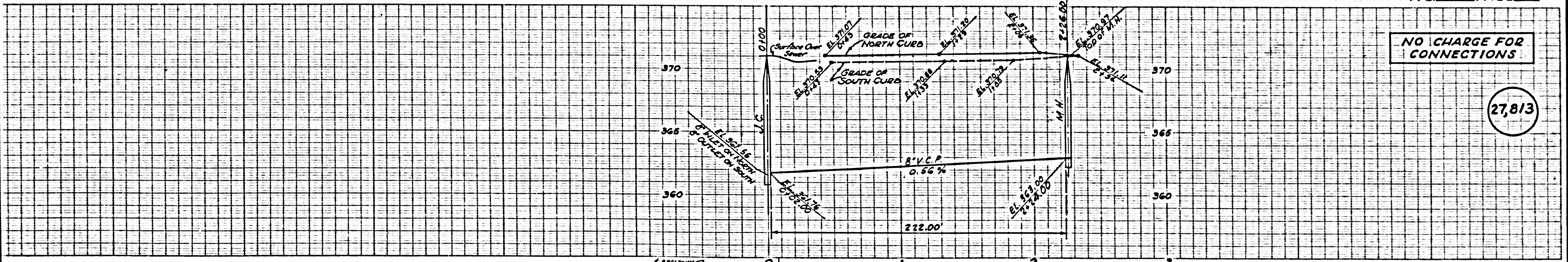
OFFICE OF COUNTY ENGINEER, REG. C. & E. NO. 1404

SUBMITTED: *N. F. Brown*  
 SAN GABRIEL VALLEY REGIONAL ENGINEER

P.C. 5082 PAGE 2

NO CHARGE FOR CONNECTIONS

27,813



0+00 Const. J.C.  
 around V.C.P. Sewer.  
 Press out pipe for conn.  
 So. Calif. Gas Co.