

LOMITA BLDG. DIST. NO. 71

PROFILE ALIGNMENT AND GRADE OF P.C. 5083
 SANITARY SEWERS PAGE 1
 TO BE CONSTRUCTED IN
 J.N. 0350.44

TRACT NO 24831

PRIVATE CONTRACT NO. 5083

W.S. 28
 SHEETS, 4 PAGES

SCALE: VERT. 1" = 4' HORIZ. 1" = 10'

DATE: JUNE, 1958

PREPARED IN THE OFFICES OF
 BARCLAY-PEARSON CO., INC.

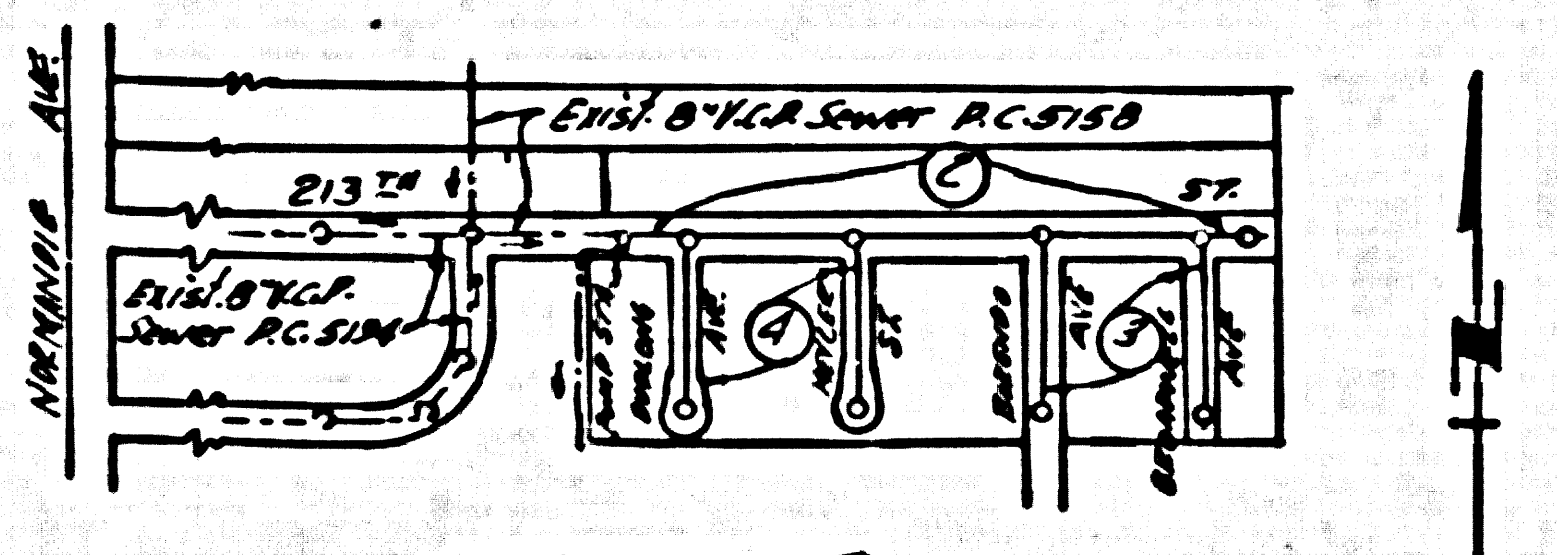
By: *Edward L. Pearson*
 REG. C. E. NO. 5723

FOR LEGEND SEE PLAN NO. S-A-64

28,354

B.M. 513066 EL. 41.359 L.B.T. West Curb
 Normandie Ave. opposite RR #2783216 (4th RR
 North of Carson St.) Gardonia Quad 1853 Adj.
 B.M. 513067 4.70

- NOTES
1. PROVIDE STAKES ON THE PROPERTY LINE OR PROPERTY LINES PRODUCED AT RIGHT ANGLES TO THE SEWER LINE AT THE CENTER LINE OF EACH MANHOLE.
 2. NO REPRESENTATIVE OF THE COUNTY ENGINEER WILL SURVEY OR LAY OUT ANY PORTION OF THE WORK.
 3. THE OWNER OR HIS AUTHORIZED REPRESENTATIVE SHALL FURNISH THE COUNTY ENGINEER WITH GRADE SHEETS AND STATIONING FOR ALL HOUSE LATERALS AND T BRANCHES AND SHALL PROVIDE STAKES FOR THEM AT THEIR PROPER LOCATIONS WITH STATIONING PLAINLY MARKED. ANY CHANGE IN LOCATION SHALL BE REQUESTED IN WRITING BY THE OWNER OR HIS REPRESENTATIVE.
 4. THE PRIVATE ENGINEER SHALL FURNISH THE HOUSE LATERAL BATH AT THE PROPERTY LINE BELOW THE TOP OF CURB ELEVATION FOR EACH HOUSE LATERAL ON THE GRADE SHEET.
 5. NO REVISIONS SHALL BE MADE IN THESE PLANS WITHOUT THE APPROVAL OF THE COUNTY ENGINEER.
 6. USE STANDARD MANHOLE FRAMES AND COVERS, S-117, EXCEPT AS NOTED.
 7. USE STANDARD ERECTOR PIPE EXCEPT AS NOTED.
 8. USE CURBENT BOSTON OR "WOOD-JOINT" OR "FLUSH-JOINT" FOR ALL V.C.P. JOINTS PER SPEC., SECT. 55 & 56.
 9. RESURFACE ALL TRENCH WITH PAVED AREA TO 4" MIN. L.A. COUNTY ROAD DEPT. OR CALIF. STATE HIGHWAY REQUIREMENTS IN ACCORDANCE WITH PERMITS.
 10. ENCASE FOUR FEET OF SEWER AT POINTS OF INTERFERENCE WITH POLES, CASE III, S-175.
 11. HOUSE LATERALS TO BE CONSTRUCTED WITH INVERTS AT PROPERTY LINE 6" FEET BELOW CURB GRADE EXCEPT AS NOTED.
 12. ALL STRUCTURES SHALL BE BACK SEWER STRUCTURES, S-194, EXCEPT AS NOTED.
 13. FOR ALLOWABLE LEAKAGE TEST USE FORMULA NO. 1, SPEC. S, SEC. 54.
 14. MANHOLE TOPS IN UNIMPROVED RIGHTS-OF-WAY TO BE SIX INCHES ABOVE FINISHED GRADE.
 15. THE CONTRACTOR SHALL NOTIFY THE CONSTRUCTION & STORM DRAIN DIVISION BY TELEPHONE, HANSON 9-460, EXT. 343, AT LEAST TWENTY-FOUR HOURS BEFORE STARTING ANY WORK UNDER THIS CONTRACT.
 16. STANDARD SPECIFICATIONS DATED MAY 15, 1958 APPLY IN THE CONSTRUCTION OF THIS PROJECT.



INDEX MAP
 TRACT NO 24831
 P.C. 5083
 Scale: 1" = 400'

NO CHARGE FOR CONNECTIONS
 7. Klein 7-1-58

NOTES

GRADES TO WHICH THE IMPROVEMENT IS TO BE CONSTRUCTED ARE SHOWN ON PLANS AND PROFILE GRADE POINTS FOR TOP OF CURB, CENTER LINE OF SIDEWALK, OR CENTER LINE OF ALLEYS ARE SHOWN BY CIRCLES ON PROFILES. AT ALL POINTS BETWEEN THESE POINTS THE GRADE SHALL BE ESTABLISHED SO AS TO CONFORM TO A STRAIGHT LINE DRAWN BETWEEN SAID BENCH-MARK POINTS.

ELEVATIONS ARE IN FEET ABOVE U.S.C. & G.S. MEAN SEA LEVEL DATUM OF 1929.

THIS DRAWING AND THE DATA HEREON ARE HEREBY MADE A PART OF THE SPECIFICATIONS.

WORK SHALL BE CONSTRUCTED ACCORDING TO SPECIFICATIONS ON FILE IN THE OFFICE OF THE COUNTY ENGINEER AND SHALL BE PROSECUTED ONLY IN THE PRESENCE OF THE COUNTY ENGINEER.

WORK WHICH CAN BE STARTED, THE CONTRACTOR MUST OBTAIN A PERMIT TO EXCAVATE IN COUNTY ESTATES FROM THE L.A. COUNTY ROAD DEPT., DISTRICT OFFICE NO. 23, AND MAKE A DEPOSIT WITH THE COUNTY ENGINEER, ROOM 234 PAN AMERICAN BUILDING, 225 SO BROADWAY, LOS ANGELES, TO COVER THE COST OF CONSTRUCTION INSPECTION AND RECORD PLANS.

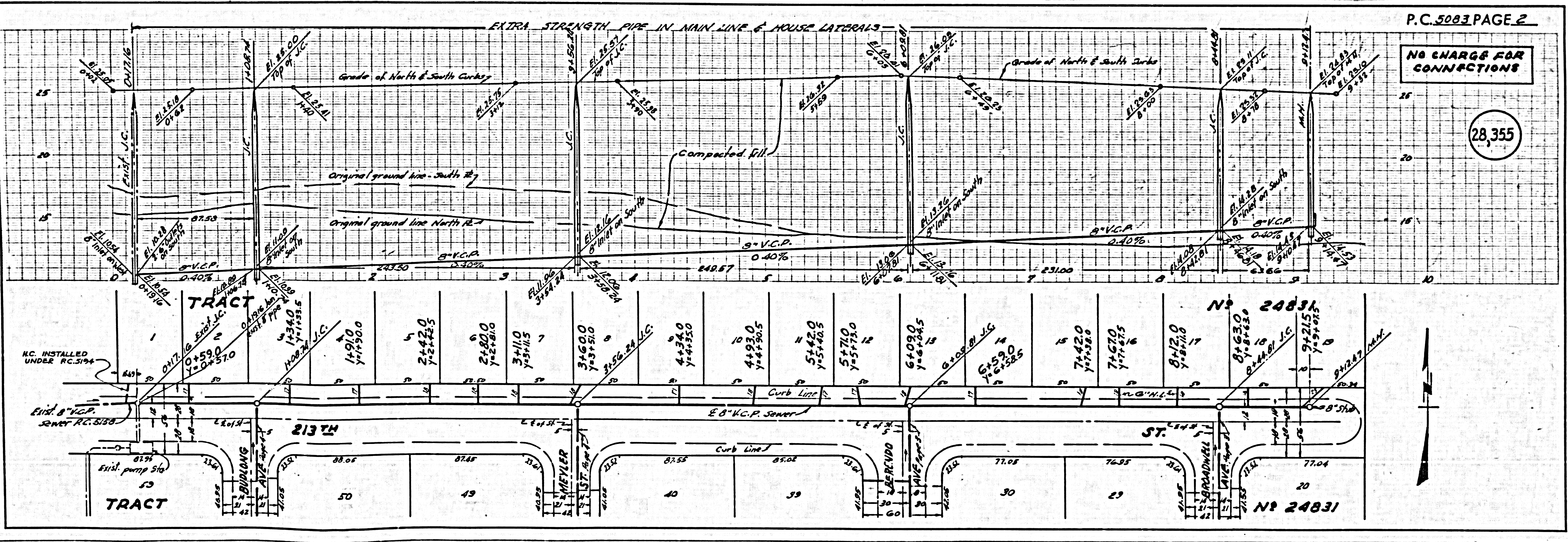
APPROVAL OF THIS PLAN BY THE COUNTY OF LOS ANGELES DOES NOT CONSTITUTE A REPRESENTATION AS TO THE ACCURACY OF THE LOCATION OR OF THE EXISTENCE OR NON-EXISTENCE OF ANY UNDERGROUND UTILITY PIPE, OR STRUCTURE WITHIN THE LIMITS OF THIS PROJECT. THIS NOTE APPLIES TO ALL PAGES.

IF WORK IS TO BE DONE IN A STATE HIGHWAY, A PERMIT SHALL BE OBTAINED FROM THE STATE OF CALIFORNIA, DIVISION OF HIGHWAYS, 120 SOUTH BRIDGE STREET.

COUNTY OF LOS ANGELES, CALIFORNIA

APPROVED, JOHN A. LAMBE, COUNTY ENGINEER
 APPROVED, C.B. CHAFFIN, CHIEF ENGINEER
 BY: *J. A. Lambe* (Sanitation Engineer) BY: *C. B. Chaffin* (City Engineer)
 CHECKED BY: *J. K. DeWitt* (Office Engineer)
 OFFICE OF COUNTY ENGINEER, 100 S. W. 5th St., LOS ANGELES, CALIF. 90012

8-17-58 Revised T.C. Grades 213TH STREET
 Revised BROADWELL AVENUE
J. K. DeWitt 8-19-58



P.C. 5083 PAGE 2

NO CHARGE FOR CONNECTIONS

28,355

